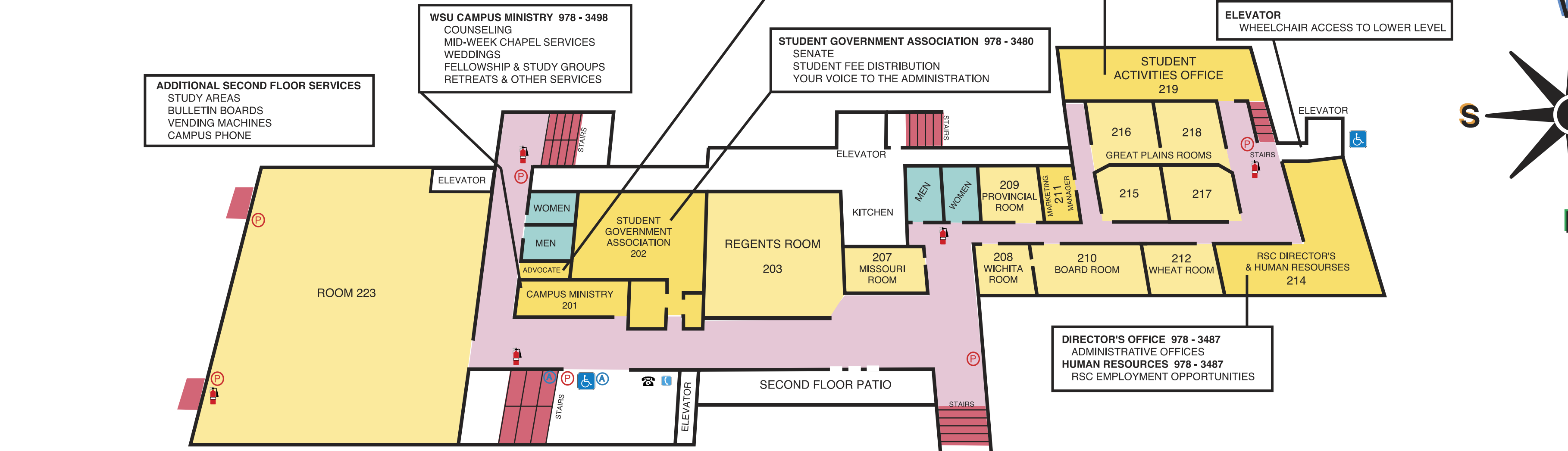
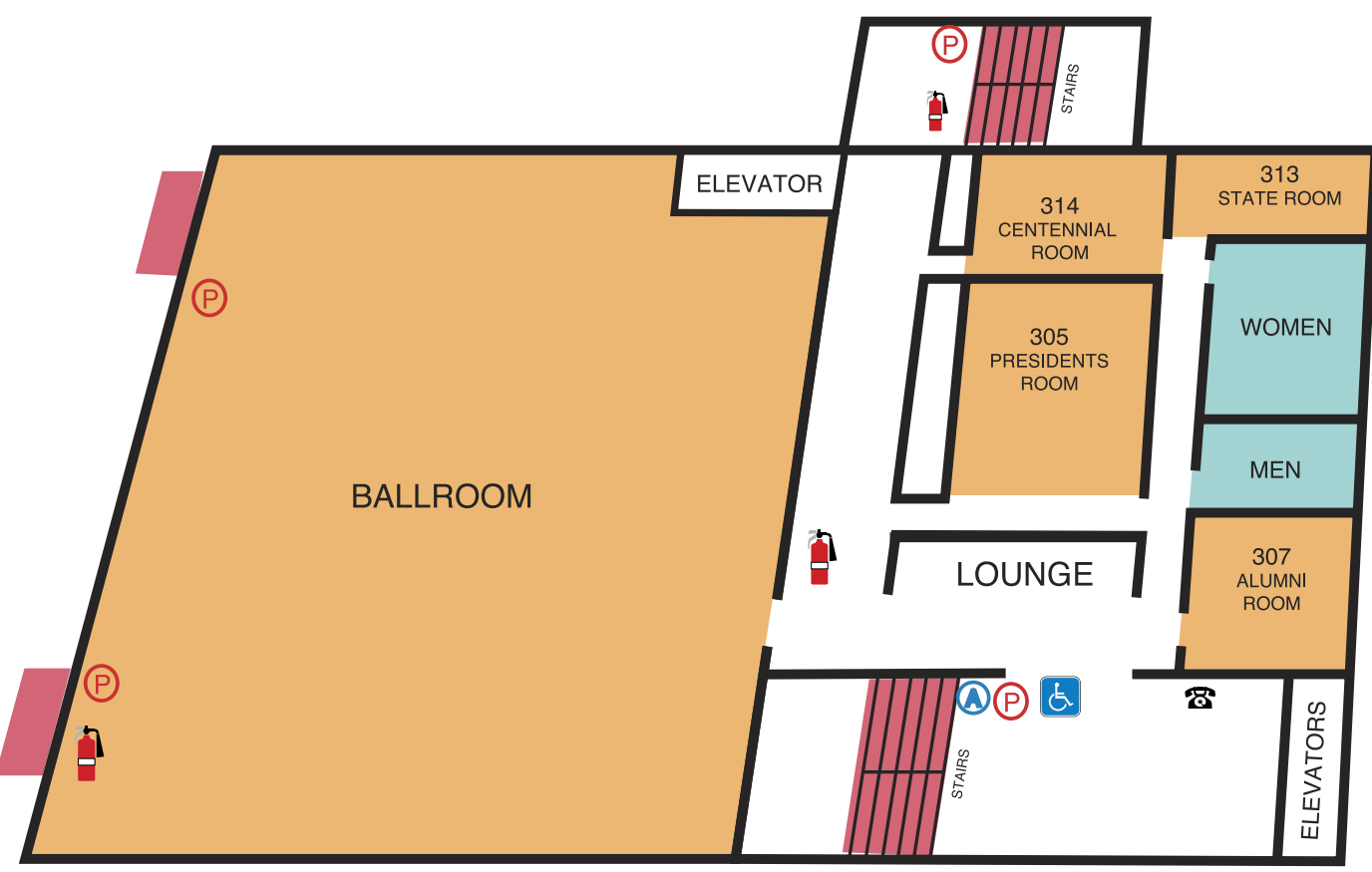
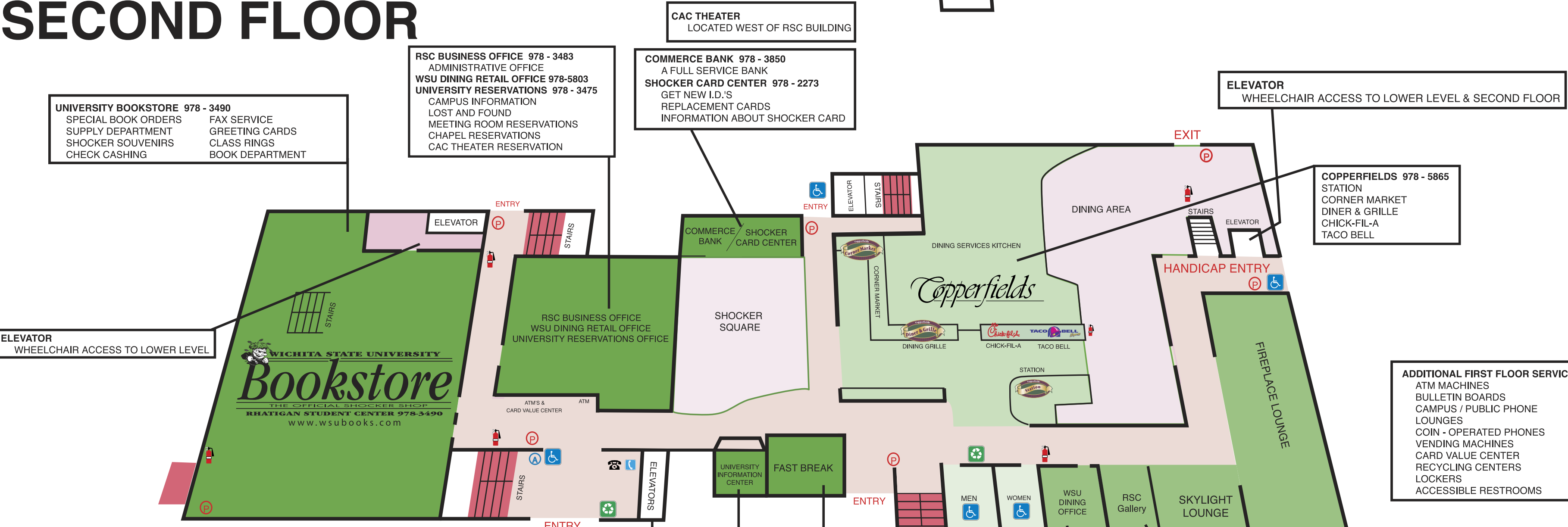


Rhatigan RSC Student Center

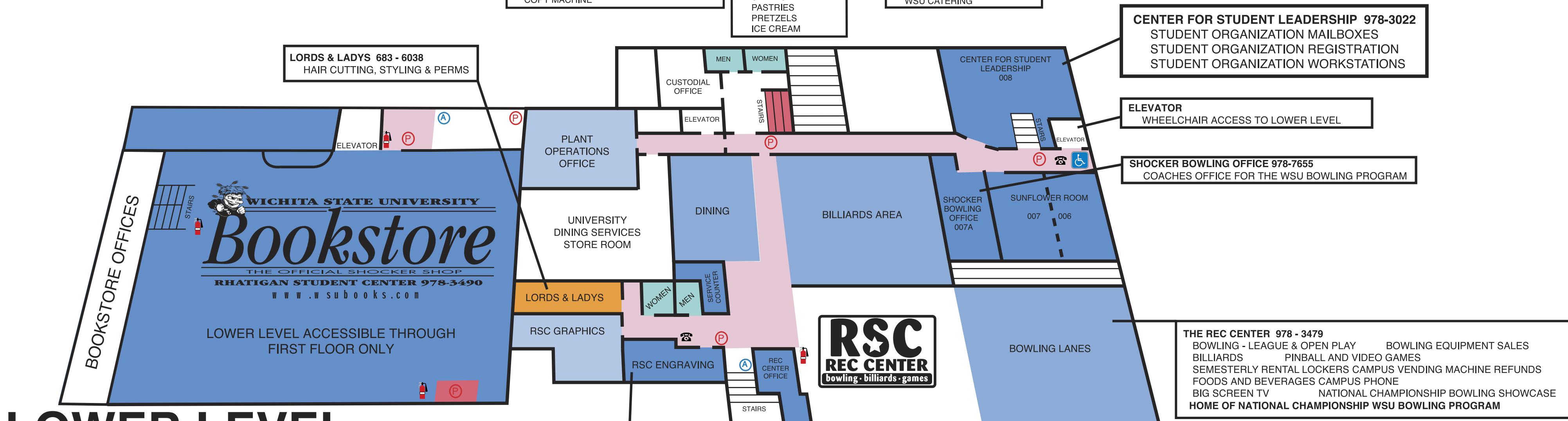
THIRD FLOOR



SECOND FLOOR



FIRST FLOOR



LOWER LEVEL

DESIGNATED STORM SHELTER

- BUILDING DIRECTORY KEY**
- | | | | | |
|---|--|--|--|---|
| <p>ADMINISTRATIVE OFFICES</p> <ul style="list-style-type: none"> Student Government Association 2nd floor Office of Student Advocate 2nd floor Student Activities Council 2nd floor WSU Campus Ministry 2nd floor RSC Director's Office 2nd floor RSC Human Resources 2nd floor RSC Business Office 1st floor RSC Dining Services 1st floor University Reservations 1st floor The Rec Center lower level RSC Plant Operations lower level RSC Graphics lower level Shocker Bowling Office lower level | <p>UNIVERSITY BOOKSTORE</p> <ul style="list-style-type: none"> Entrance 1st floor Book Level lower level <p>LORDS & LADYS lower level</p> <p>UNIVERSITY INFORMATION CENTER 1st floor</p> <p>COMMERCE BANK 1st floor</p> <p>SHOCKER CARD CENTER 1st floor</p> <p>RESTAURANTS / FOOD SERVICE</p> <ul style="list-style-type: none"> Copperfields 1st floor Fastbreak 1st floor <p>CENTER FOR STUDENT LEADERSHIP lower level</p> | <p>MEETING ROOMS</p> <ul style="list-style-type: none"> #006/007 SUNFLOWER ROOM lower level #203 - Regents Room 2nd floor #207 - Missouri 2nd floor #208 - Wichita 2nd floor #209 - Provincial 2nd floor #210 - Board 2nd floor #212 - Wheat 2nd floor #223 - Ballroom 2nd floor Great Plains #215, #216, #217, #218 2nd floor #305 - President's 3rd floor #307 - Alumni 3rd floor #313 - State Room 3rd floor #314 - Centennial Room 3rd floor Ballroom 3rd floor | <p>LOUNGES</p> <ul style="list-style-type: none"> Shocker Square 1st floor Skylight Lounge 1st floor Fireplace Lounge 1st floor <p>RESTROOMS</p> <p>CAC THEATER
Not Shown - Located West of RSC Building</p> <ul style="list-style-type: none"> CAMPUS PHONE PUBLIC PHONE HANDICAP ACCESSIBLE FIRE ALARM PULL STATIONS PUBLIC FIRE EXTINGUISHERS | <ul style="list-style-type: none"> STAIR WELLS CORRIDORS AREA OF RESCUE RECYCLING BIN |
|---|--|--|--|---|