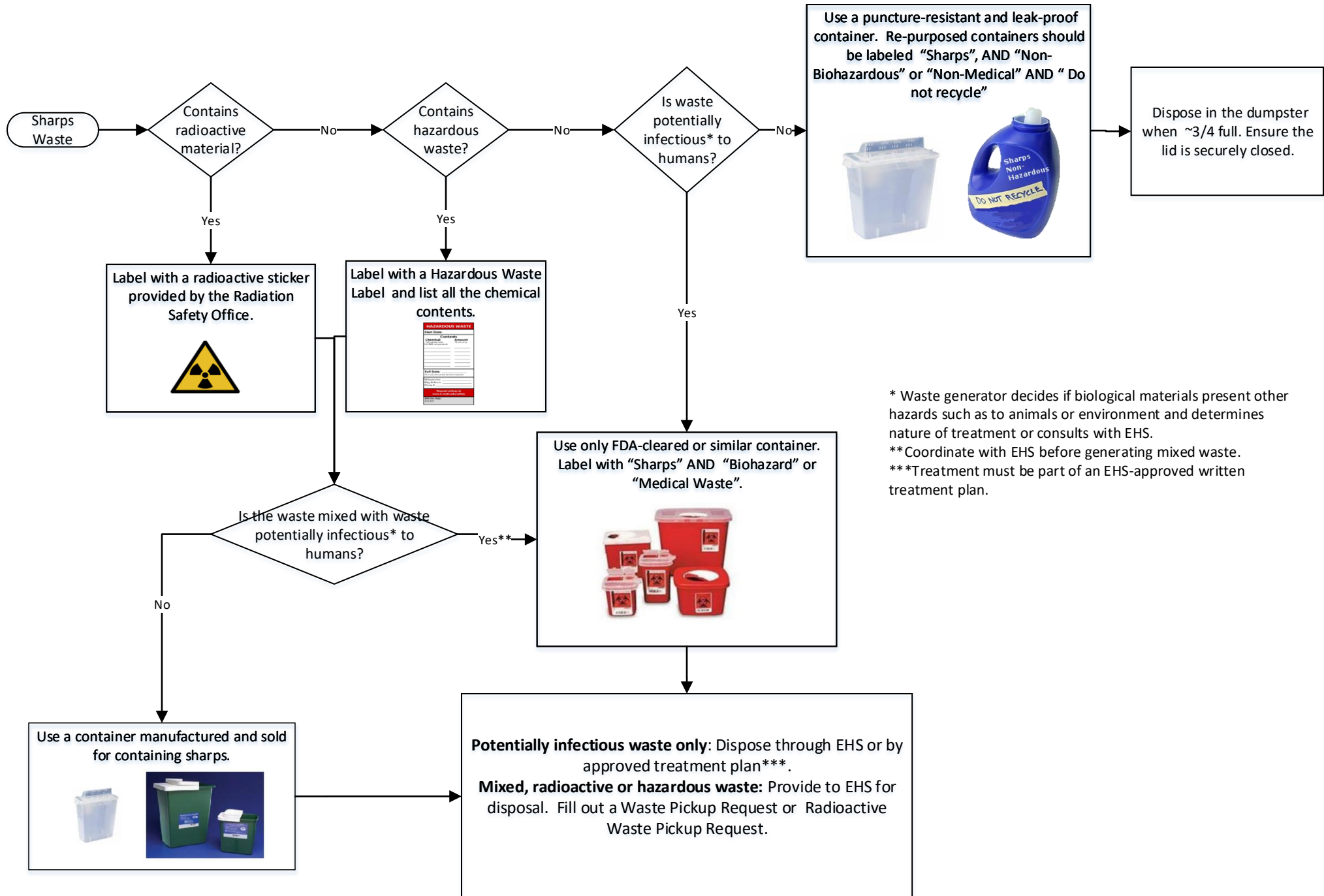


Sharps Waste Disposal Chart

Sharps are items capable of puncturing, piercing, cutting, or abrading the skin, including but not limited to glass or plastic pipettes, test tubes, broken capillary tubes, exposed ends of dental wires, culture slides, scalpels, razor blades, lancets, suture needles, needles, and syringes with needles.



* Waste generator decides if biological materials present other hazards such as to animals or environment and determines nature of treatment or consults with EHS.
 ** Coordinate with EHS before generating mixed waste.
 *** Treatment must be part of an EHS-approved written treatment plan.