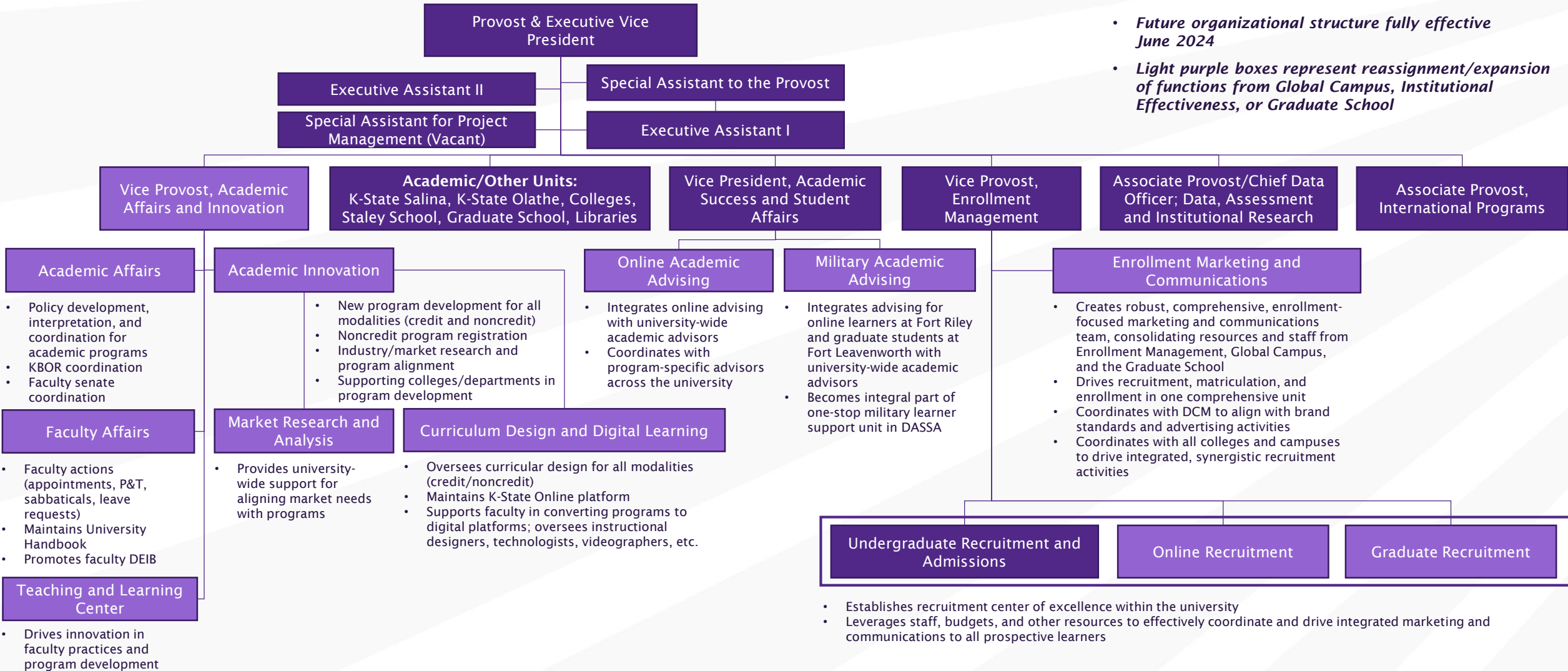


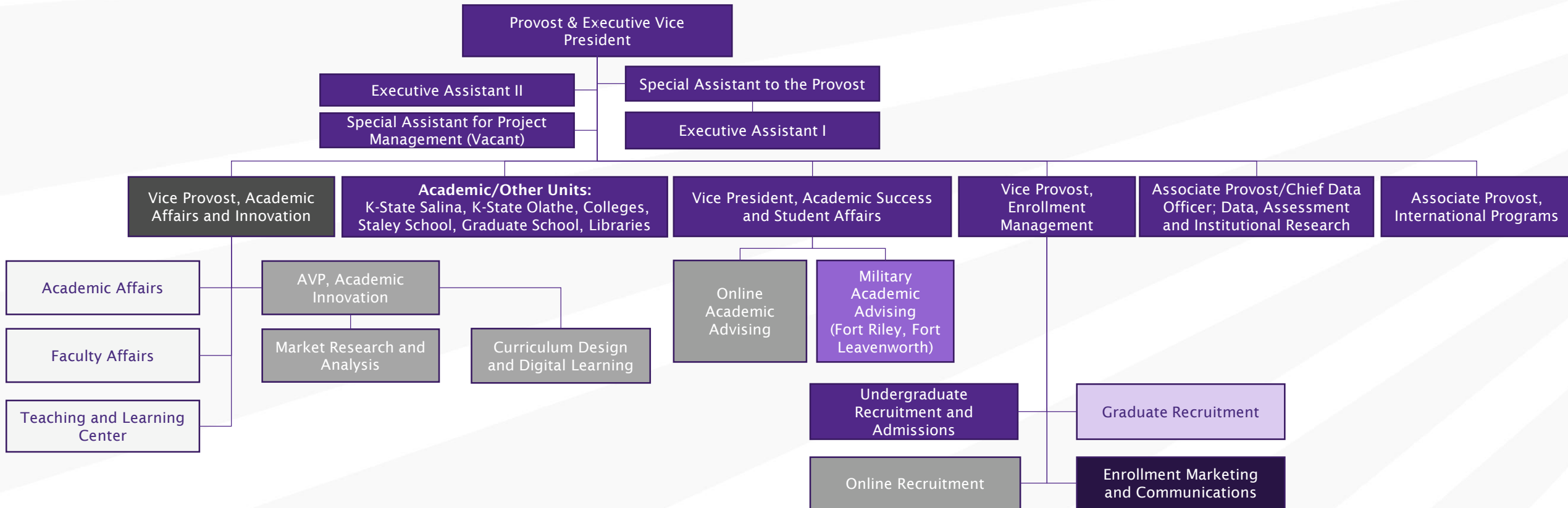
Provost's Office Academic Innovation Organizational Redesign



- *Future organizational structure fully effective June 2024*
- *Light purple boxes represent reassignment/expansion of functions from Global Campus, Institutional Effectiveness, or Graduate School*



Provost's Office Academic Innovation Organizational Shifts



Legend

- New position using repurposed funding from Global Campus/Provost's Office
- Shifts from Global Campus
- Consolidates Enrollment Management, Global Campus and Graduate School functions
- No changes
- Shifts from Institutional Effectiveness
- Shifts from Graduate School
- Shifts from Global Campus and Graduate School

*The university's agreement with UFM, Inc. will be revisited as part of the transition planning by the Senior Vice President for Executive Affairs, University Engagement and Partnerships, and Chief of Staff.

**Enrollment Management will coordinate central enrollment advertising functions with DCM.

*** Business office functions will be determined during the transition period.