



2019-2020

# Theatre, Dance, and Opera Season



**KANSAS STATE**  
UNIVERSITY

School of Music, Theatre, and Dance



## TAKING STEPS

by Alan Ayckbourn

Directed by Jennifer Vellenga

Oct. 10, 11, 12 at 7:30 p.m., Oct. 17, 18, 19 at 7:30 p.m., and  
Oct. 20 at 2:30 p.m.

Mark A. Chapman Theatre in Nichols Hall (MAIN STAGE)

A suspicious haunting. Eccentric lovers. A mysterious motorcyclist. This fast-paced, hilarious farce is set in a Victorian mansion in which all the rooms, passages and stairways are portrayed on a single level.



## STOP KISS

by Diana Son

Directed by Teva Spencer (B.A. '19)

Oct. 24, 25, 26 at 7:30 p.m. and Oct. 27 at 2:30 p.m.

Purple Masque Theatre in West Stadium (SECOND STAGE)

After Callie meets Sara, the two unexpectedly kiss, provoking a violent attack that transforms their lives in a way they could never anticipate.



## A CHRISTMAS CAROL, THE MUSICAL

Music by Alan Menken

Book by Mike Ockrent and Lynn Ahrens

Lyrics by Lynn Ahrens

Based on the story by Charles Dickens

Directed by Jerry Jay Cranford

Nov. 7, 8, 9 at 7:30 p.m. and Nov. 10 at 2:30 p.m.

McCain Auditorium (MAIN STAGE/MUSICAL)

Every four years, K-State Theatre brings Charles Dickens' Ebenezer Scrooge to life in the Menken/Ahrens musical at McCain Auditorium. Don't miss this holiday tradition! Presented through special arrangement with Music Theatre International. [www.MTIShows.com](http://www.MTIShows.com)



## WINTERDANCE

Dec. 5, 6, 7 at 7:30 p.m. and Dec. 7 at 2:30 p.m.

Mark A. Chapman Theatre in Nichols Hall  
(MAIN STAGE/DANCE)

Join us this holiday season as we present a showcase of exciting dance styles, including jazz, tap, modern and African dance. Talented K-State students will perform original pieces choreographed by faculty.



## SCHOOL GIRLS; OR THE AFRICAN MEAN GIRLS PLAY

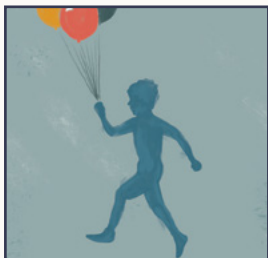
A STAGE READING PRESENTED BY EBONY THEATRE

by Jocelyn Bioh

Feb. 7 at 7:30 p.m.

Purple Masque Theatre in West Stadium (SECOND STAGE/EBONY THEATRE)

Which girl will be chosen to represent Ghana in the Miss Global Universe pageant? This biting comedy explores the universal similarities and glaring differences facing teenage girls across the globe.



## BRIGHT IDEAS

by Eric Coble

Directed by Trace Campbell (B.S. '20)

Feb. 20, 21, 22 at 7:30 p.m. and Feb. 23 at 2:30 p.m.

Purple Masque Theatre in West Stadium (SECOND STAGE)

Josh and Gen are one fatal dinner party away from the ultimate success as parents: getting their 3-year-old son into the right school. You may never look at pre-school or pesto the same way again.



## FLOYD'S SUSANNAH

Directed by Reginald Pittman

Feb. 27, 28, 29 at 7:30 p.m. and March 1 at 2:30 p.m.

Mark A. Chapman Theatre in Nichols Hall (MAIN STAGE/OPERA)

Carlisle Floyd's best-known opera is based loosely on the apocryphal tale of Susannah and the elders set in rural Tennessee and written in response to McCarthyism and the Red Scare.



## SPRINGDANCE

April 3 and April 4 at 7:30 p.m.

McCain Auditorium

(MAIN STAGE/DANCE)

Celebrate the arrival of spring with K-State Dance! Original choreography highlights modern, tap, jazz and African styles of dance.



## STARTING HERE, STARTING NOW

by Richard Maltby Jr. and David Shire

Directed by Jerry Jay Cranford

April 4 at 7:30 p.m. and April 5 at 2:30 p.m.

Purple Masque Theatre in West Stadium (SECOND STAGE/MUSICAL)

The advanced musical theatre class presents this fast-paced musical revue as a touching reminder that love can go right, wrong, or nowhere!

Presented through special arrangement with Music Theatre International. [www.MTIShows.com](http://www.MTIShows.com)



## MACBETH

by William Shakespeare

Directed by David Mackay

April 23, 24, 25 at 7:30 p.m., April 30, May 1, 2 at 7:30 p.m.,  
and May 3 at 2:30 p.m.

Mark A. Chapman Theatre in Nichols Hall (MAIN STAGE)

A brave Scottish general returns home from battle and receives a prophecy from a trio of witches. Consumed by ambition, Macbeth sets out on a path of murder that wracks him with guilt and paranoia.

### GLORIA

*by Branden Jacob-Jenkins*

*A stage reading directed by Ian Boyd-Duncan  
(B.A. '20)*

**Sept. 20 at 7:30 p.m.**

Purple Masque Theatre in West Stadium  
(BONUS EVENT)

This powerful play follows an ambitious group of editorial assistants at a notorious Manhattan magazine. When an ordinary workday becomes anything but, the stakes for who will get to tell their own story elevates to disastrous heights.

### THE FLICK

*by Annie Baker*

*A stage reading directed by Cole Rockhold (B.A. '20)*

**Jan. 31 at 7:30 p.m.**

Purple Masque Theatre in West Stadium  
(BONUS EVENT)

In a run-down movie theater in central Massachusetts, three underpaid employees mop the floors and tend to one of the last 35mm film projectors in the state. A hilarious and heart-rending cry for authenticity in a fast-changing world.

### THEATRE SHORTS: ONE ACTS

*directed by students in the advanced directing class*

**April 3 at 7:30 p.m.**

Purple Masque Theatre in West Stadium  
(BONUS EVENT)

Advanced students in directing, acting and design classes team up to present one acts in the Purple Masque Theatre.

### BARRIER FREE THEATRE

*with the graduate Drama Therapy program*

**May 1 and May 2 at 7:30 p.m.**

**May 3 at 2:30 p.m.**

Purple Masque Theatre in West Stadium  
(BONUS EVENT)

Under the direction of Sally Bailey, Barrier Free Theatre — composed of performers with and without disabilities — has created and presented original one act plays for more than two decades. Come see what they create this year!

### MTD SCHOLARSHIP EXTRAVAGANZA

**Feb. 15 at 6 p.m.**

K-State Grand Ballroom

Support student scholars in the School of Music, Theatre, and Dance and enjoy dinner, a silent auction and select performances by students in the performing arts. Cost \$100, RSVP required. Call 785-532-5740 for more information.

## HOW TO GET TICKETS:

**Online: [k-state.edu/mtd/tickets](https://k-state.edu/mtd/tickets)**

**By phone: 785-236-8638**

**In person: 119 Nichols Hall\* or one hour prior to curtain at the performance venue.**

As always, K-State Theatre and Dance charges NO FEES to tickets purchased online or by phone and delivered via e-ticket. Additional fees apply to will call or mailed tickets.

\*Please note that the box office in 119 Nichols is open based on student availability. This is to help keep ticket prices more affordable. We encourage patrons to purchase online or over the phone. If in-person purchases are preferred, please call ahead to ensure prompt assistance.

## TICKET PRICES:

MAINSTAGE (including tax)	Plays and Dance	Musical and Opera
General public	\$16	\$19.50
Seniors (over 55) and military	\$14	\$17.50
K-State faculty/staff	\$14	\$17.50
K-State Student/youth (under 18)	\$11	\$14

SECOND STAGE (including tax)	Plays
General public	\$9
Seniors (over 55) and military	\$7.75
K-State faculty/staff	\$7.75
K-State Student/youth (under 18)	\$5.75

BONUS EVENTS	\$5
--------------	-----

Season subscribers receive 20% off when purchasing one or more tickets to five or more events. Simply apply the discount code **SEASON19** upon online checkout at [k-state.edu/mtd/tickets](https://k-state.edu/mtd/tickets)

## GROUP DISCOUNTS

Groups of 10 or more receive a 20% discount. For more information or assistance in planning your party, contact the K-State Theatre marketing office at 785-236-8638.





## EBONY THEATRE HOSTS FIRST FRIDAYS

Sept. 6, Oct. 4, Nov. 1, Dec. 6, 2019

Feb. 7, Mar. 6, Apr. 3, May 1, 2020

6-7 p.m.

Sandy Chastan Purple Masque Lobby in West Stadium  
(FREE EVENT)

On the first Friday of each month during the academic year, a multicultural student organization is honored for its work on campus. This arts-infused social gathering invites a diversity of performers to share their work over conversation and refreshments.

## Main Stage

K-State Main Stage productions are directed and choreographed by faculty and performed by students. These shows have the full support of the production shops and their staff.

Venues: Mark A. Chapman Theatre in Nichols Hall;  
McCain Auditorium

## Second Stage

Second Stage productions are directed, designed and performed entirely by students. Faculty oversee the process. Venue: Purple Masque Theatre in West Stadium

## Bonus Events

Bonus events are student-driven projects or special one-time events.  
Venue: Purple Masque Theatre in West Stadium

# KANSAS STATE

## UNIVERSITY

### K-State THEATRE FUND F29300

Here is my check or credit card authorization for a gift of:

☐ \$1,000

☐ \$250

☐ \$50

☐ Other \$

☐ \$500

☐ \$100

☐ \$25

Name (print) \_\_\_\_\_

Address \_\_\_\_\_

City \_\_\_\_\_

State \_\_\_\_\_

ZIP \_\_\_\_\_

Phone \_\_\_\_\_

Email \_\_\_\_\_

**Please make check payable to Kansas State University Foundation**

**Credit card payment:**



If this is a business credit card, business name: \_\_\_\_\_

As an added benefit to our donors, the foundation absorbs the fee charged by your credit card company.

CARD NUMBER

--	--	--	--	--	--	--	--	--	--	--	--	--	--	--	--	--	--	--	--

EXP. DATE

--	--	--	--	--	--

SIGNATURE \_\_\_\_\_

PHONE \_\_\_\_\_

Required for credit card gifts

**Or make your gift online at [give.evertrue.com/ksu/mtd](http://give.evertrue.com/ksu/mtd)**

☐ Contact me/us about creating a scholarship.

☐ Contact me/us about gifts that pay lifetime income.

☐ I/we have provided for K-State in my/our will.

### Matching gift information

If you or someone in your household works for a matching gift company, contact your human resources department to see if your gift qualifies for a company match. For more information, contact our matching gift coordinator by calling 800-432-1578 or visit [ksu.foundation.org/match](http://ksu.foundation.org/match).

**Thank you for your generous support!**

Please return this card to: KSU Foundation, P.O. Box 9200, Shawnee Mission, KS 66201-1800.

042001303

F29300

109 McCain Auditorium  
1501 Goldstein Circle  
Manhattan, KS 66506-0109  
201-002

**Notice of Nondiscrimination**

Kansas State University is committed to nondiscrimination in admissions, programs and employment. Inquiries and complaints: Contact Director of Institutional Equity, Kansas State University, 103 Edwards Hall, Manhattan, KS 66506-4801, (Phone) 785-532-6220; (TTY) 785-532-4807.