



# Her Velcro Voice

A Play by Cody O'Hare

Dramaturgy by Shannon Blake Skelton, PhD

# Playwright Biography

- Cody O'Hare
- Writer, performer and theatre practitioner
- Born December 10th, 1995
- From Norton, Kansas
- Currently resides in Utah
- Kansas State University graduate, 2018
- Founding Member Threepenny Theatre Co.

<https://www.threepennytheatre.com>



# Numbers Stations

- Number stations are enigmatic shortwave transmissions that are mysterious in origin.
- Many believe them to be from various intelligence agencies and espionage entities.
- These broadcasts seemingly carry encrypted messages in the form of numbers, using voices from adults and children.
- These numbers are read in various languages.
- These broadcasts first appeared in the 1910s.



# Numbers Stations

- [Click Here For Sample Numbers Stations Recitations](#)
- As one can hear, the numbers, voices, rate of delivery, timbre, inflection and even language change and alter depending on the station broadcasting.
- To access these live broadcasts, one must a shortwave radio.



BSU  
000003 01

33/0254

08178	36878	72241	91936	63141
30725	69085	62311	58046	24539
06147	80503	62168	62635	89613
70378	76894	87414	75304	44323
82540	71985	10842	78504	61729
22208	50537	27255	57983	92088
02102	20553	56910	23159	97867
34289	76398	60782	91398	93774
78172	81658	13670	94835	98453
73235	78465	83962	13128	43098
43898	70174	90114	60738	58379
65570	65567	60164	96472	71639
15484	14845	98729	75873	37020
21183	17689	18406	25783	80744
39885	33543	08117	94211	93420
54027	77932	45781	49475	31674
75878	27410	38260	23221	09313
78340	49555	26188	92201	83725
66463	44242	73783	58105	35298
41163	50834	88500	90326	47153
45021	71527	35628	20347	97355
50022	51416	28821	63835	00082
38014	54041	48657	20679	33704
86332	03455	85212	95381	91888
58812	38144	95124	74068	31300

# Beyond Numbers Stations

- Though numbers stations remain rooted in the popular consciousness, there are other – even more enigmatic – broadcasts that haunt the airwaves.
- These include the mysterious “Yosemite Sam” broadcasts that utilize sound from the Warner Bros. animated character.  
[Recording Here](#)
- There is also the “Backwards Music Station” or “Whale Song” whose broadcasts, origin and intent remain a mystery.  
[Recording Here](#)



# Short Wave Radio

- Shortwave radios utilize shortwave frequencies to broadcast audio content.
- This allows those without commercial licenses to broadcast and communicate.
- It also makes censorship – or even locating the origin of a broadcast - challenging.
- The rise of amateur shortwave radio in the 1950s and 1960s fostered a global communications community similar to what would later develop with the internet.



# Short Wave Radio

Short wave radio broadcasts are used for :

- Two-way radio communication
- State-sponsored propaganda
- Alternative media
- Shipping and merchant lane communication
- Time signals
- Clandestine political messages
- Pirate radio stations
- Local news





# Telecommunications and Horror

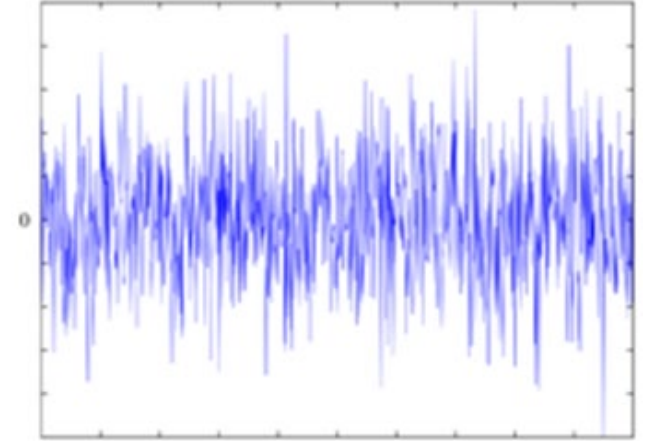
- The use of telecommunications has long been a source of horror.
- From the phone call with silence on the other end . . . . .
- To ‘prank calls’ . . . . .
- To phantom radio broadcasts . . . . .
- The idea of a disembodied, mysterious voice reaching out from the void has terrified humans since the invention of the phone and radio.





# Technology and the Paranormal

- For some “technology is a way for evil to enter your life . . . Technology is [seen as] a portal for wicked things.” – Cody O’Hare
- Technology has often been seen as a conduit to the afterlife.
- EVP (Electronic Voice Phenomena) are sounds found on electronic recordings that are interpreted as ‘spirit’ voices.
- In addition, so-called ‘ghost hunters’ utilize radios and recordings to ‘capture’ ghostly voices.



# Cinematic Influences

- O'Hare notes that the following films were influential in his creation of *Her Velcro Voice*.
- *The Autopsy of Jane Doe* (2016)
  - Coroners stumble upon a mystery of supernatural proportions when the corpse of an unidentified woman arrives at the morgue.
- *The Exorcist* (1973)
  - The legendary cinematic depiction of the possession of young girl by a demon.



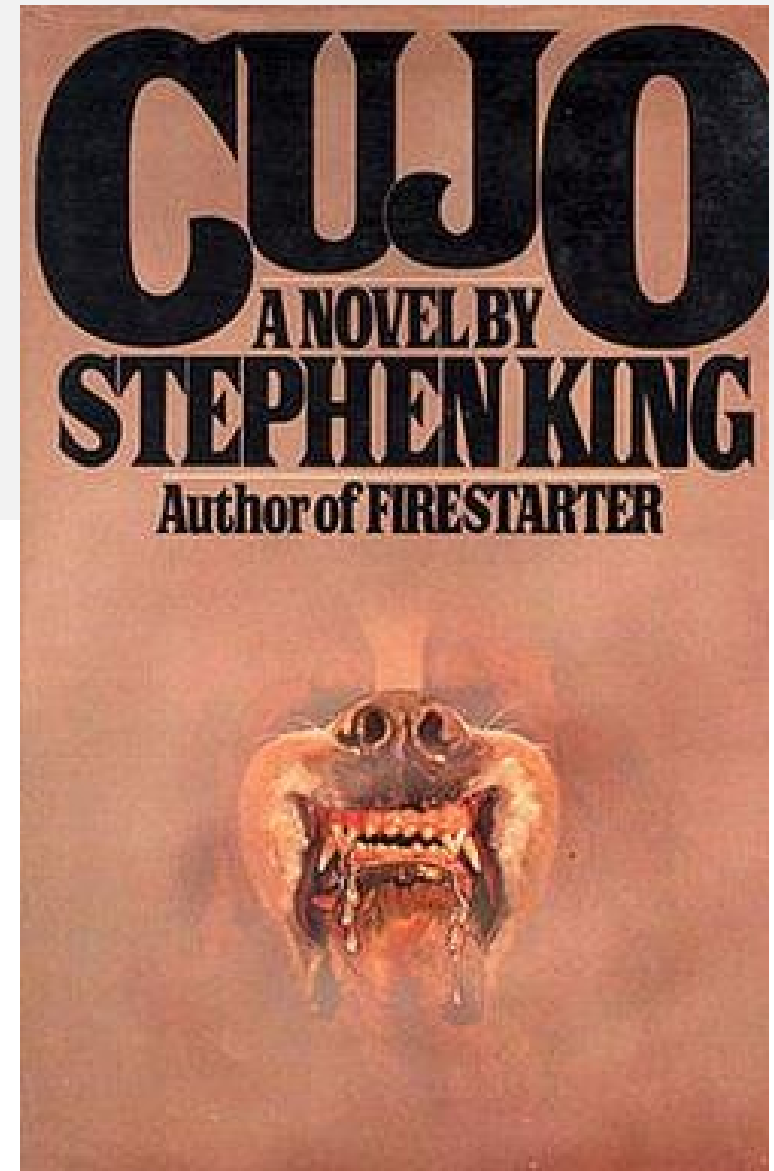
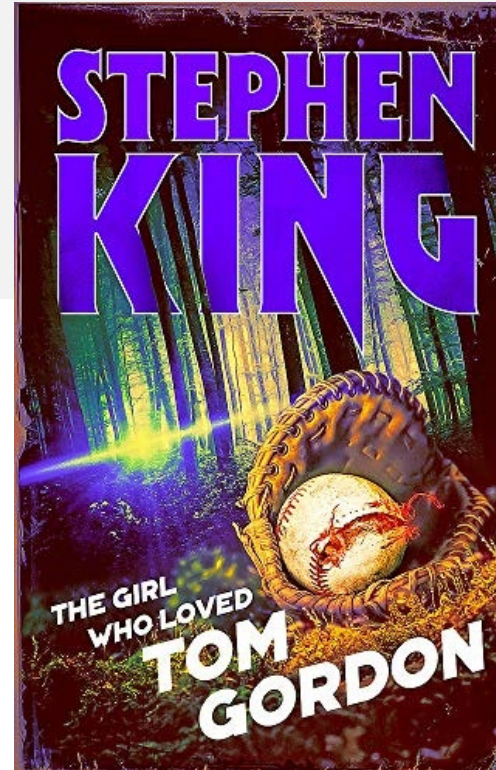
# Literary Influences

- H.P. Lovecraft (1890-1937)
  - A major influence upon O'Hare is the cosmic horror of H.P. Lovecraft, creator of such works as “The Colour Out of Space”, “Herbert West: Re-Animator” and *At the Mountains of Madness*.
- Lovecraft’s most enduring creation is the Cthulhu mythos.
- Lovecraft’s work is the inspiration for HBO’s *Lovecraft Country*



# Literary Influences

- Stephen King (1947 - )
- O'Hare notes that novelist Stephen King is a major influence on his brand of horror, especially . . . . .
- *The Girl who Loved Tom Gordon* (1999)
  - This short novel depicts a girl lost in the forests of New England. Her only connection to the world outside of nature is through her headphones as she listens to a Boston Red Sox game with her beloved "Tom Gordon" on the mound.
- *Cujo* (1981)
  - King's novel chronicles the monstrous in the form of 'man's best friend' – a caring, loveable dog is transformed into a ferocious creature bent on terrorizing his family.

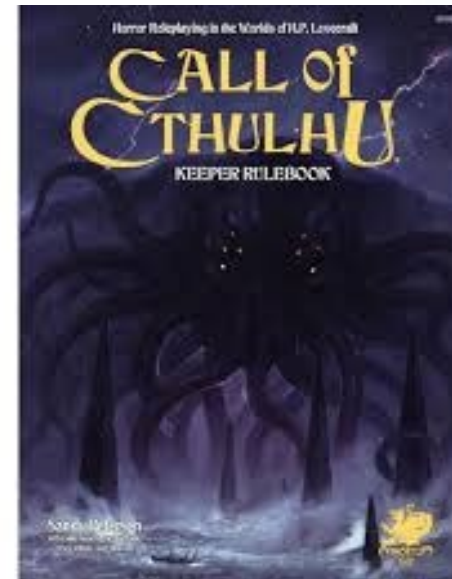
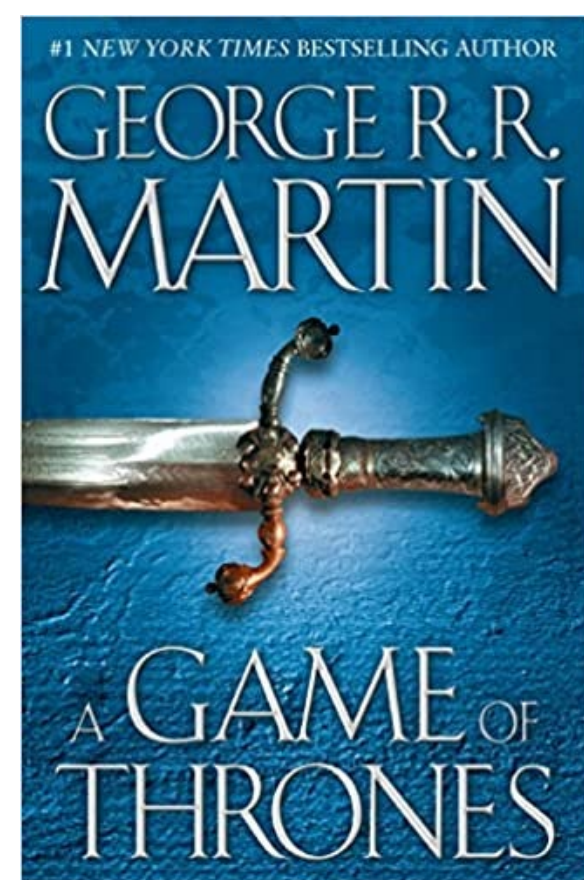
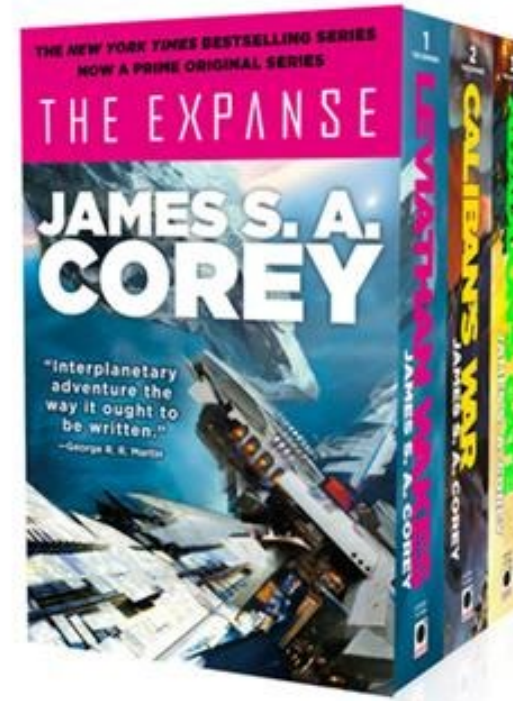




# Games as Inspiration



- Like authors George R.R. Martin (*A Game of Thrones*) and James S.A. Corey (*The Expanse* series), O'Hare utilizes his experiences in running table-top games as inspiration for his tales.
- O'Hare cites *Call of Cthulhu*, a role-playing, table-top game based on the writings of Lovecraft, as a method in which he explores storytelling.



# The End

- Please listen to the interview with playwright Cody O'Hare at [Kansas Theatre Works](#)
- Don't forget to support Cody O'Hare's work at Threepenny Theatre Company [HERE](#)
- Listen to *Her Velcro Voice* on this [Frequency](#)
- “Keep Listening for the Numbers!”

