



Master of Public Health Program

Student Orientation
August 18, 2011

Michael B. Cates, DVM, MPH, DACVPM
Director, MPH Program

James B. Nichols Professor of Veterinary Medicine

MPH Program Office
311 Trotter Hall
785-532-2042 / mphealth@ksu.edu
Call or email for appointments



Mike Cates, DVM, MPH
Program Director



Barta Stevenson, MS
Program Assistant

Master of Public Health Program

- Interdisciplinary Program of Graduate School
- Four Supporting Colleges
 - Agriculture
 - Arts and Sciences
 - Human Ecology
 - Veterinary Medicine
- 42 hour Graduate Degree
 - 14 Hours “Core” Courses
 - 22 hours Other Courses
 - 6 hours Field Experience or Public Health Research
- Graduate Certificate in Public Health Core Concepts
 - Completion of “Core” Courses

Student Learning Outcomes

1. Knowledge
 2. Skills
 3. Integration
 4. Diversity
 5. Professional Development
- Aligns with University Graduate Student Learning Outcomes
 - Information on Web Site
www.ksu.edu/mphealth

Core Areas of Knowledge

- Biostatistics
- Epidemiology
- Social and Behavioral Sciences
- Environmental Health Science
- Health Services Administration

NOTE: Core Competencies align with these areas

Core Classes

- STAT 701 (3 credit hours)
- DMP 754 (3 credit hours) or DMP 708/ DMP 854 (5 credit hours)
- KIN 818 (3 credit hours)
- DMP 806 (2 credit hours)
- HMD 720 (3 credit hours)

TOTAL of 14 semester credit hours *

For those taking the 2nd option for epidemiology, core classes will total 16 hours.

Core Classes - Scheduling

- STAT 701: Fall, Spring, Summer
- DMP 754: Fall only (On-line)
- KIN 818: Spring only
- DMP 806: Spring only
- HMD 720: Fall (In-class); Summer (On-line)

For those taking 2nd option for Epidemiology

- DMP 708: Spring only (in-class)
- DMP 854: Spring only (hybrid)

Core Classes - Recommendations

- Fall 2011
 - DMP 754
 - STAT 701
 - HMD 720
- Spring 2012
 - KIN 818
 - DMP 806
 - STAT 701
- Summer 2012
 - HMD 720
 - STAT 701

Other Course Requirements (By Area of Emphasis)

- Food Safety Biosecurity
 - Required Food Safety Courses (13 credit hours)
 - Electives (7 or 9 credit hours)
- Infectious Diseases and Zoonoses
 - Electives from DMP (at least 10 hours)
 - Other Electives (10 or 12 credit hours)
- Public Health Nutrition
 - Required Human Nutrition Courses (7 credit hours)
 - Electives (13 or 15 credit hours)
- Public Health Physical Activity
 - Required Kinesiology Courses (9 credit hours)
 - Electives (11-13 credit hours)

Field Experience

Culminating Experience

- 6 Semester Credit hours
- 480 Contact hours
- May be split over two semesters
- Policies and Procedures outlined in MPH Graduate Handbook and on web
 - Forms before start
 - Forms for assessment of experience
- Should be “application of knowledge”; schedule after all core classes + majority of all coursework
- Travel Awards: Colleges and MPH Program
- Oral/Written reports (posted to K-REx)
- NOTE: Student must be enrolled in at least one credit hour the semester you graduate.

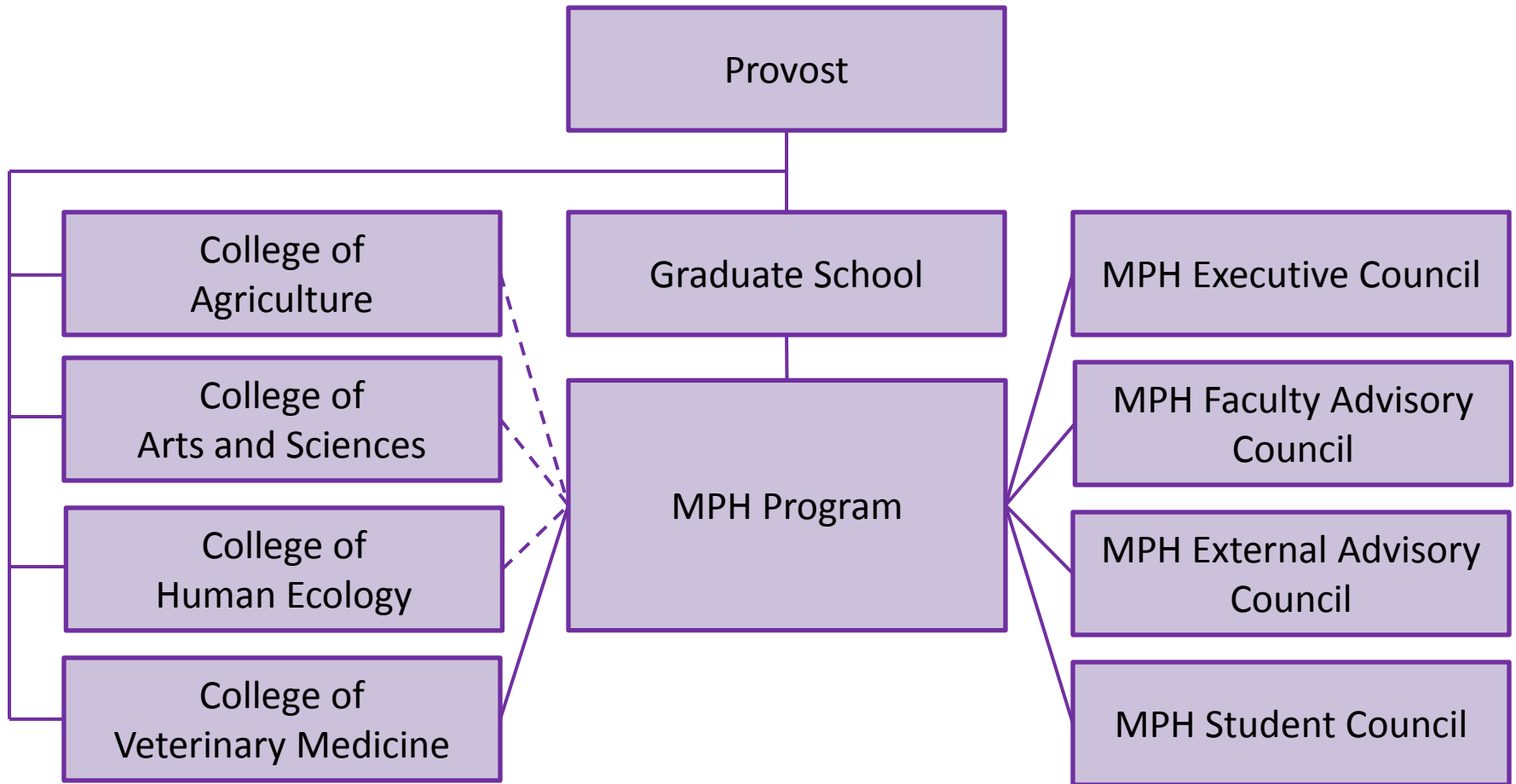
Thesis Research Option Culminating Experience

- 6 Semester Credit hours
- Research related to public health
- Time requirements agreed upon by Research Professor and Student
- Presentation must include demonstration of core public health knowledge
- Must have additional 3 hours of field experience (240 contact hours)

Supervisory Committee and Program of Study

- Supervisory Committee
 - Major Professor (can be advisor or someone else)
 - 2 or more other Faculty Members
 - Student responsibility / Advisor assists
- Program of Study for MPH Degree
 - 2nd full semester or after 9 credit hours
 - Forms on Graduate School Web Site (hyperlinked from our web site)
 - Turn in form with student/supervisory committee member signatures to MPH Office

MPH Organizational Structure



Student Participation

- K-State Public Health Club
- MPH Student Council
- Surveys
 - Initial (first week of class for new students)
 - Mid-program
 - Field Experience
 - Graduate Exit
 - Alumni

Information

- Update Contact Info to MPH Office
- Individual Advice
 - Courses, Program of Study, Field Experience/Research: Talk to Advisor first
 - Forms, Program Questions: Contact MPH Office
- Questions or Concerns which cannot be answered by Advisor: Contact MPH Office
 - Call or Email
 - Visits (Appointments preferred; walk-ins OK)