

# K-State – Fort Riley Partnership 5.0

*Renewal Event  
September 17<sup>th</sup>, 2015*



# Meeting Objectives...

1. Renew our **joint resolution**
2. Gain **strategic guidance** from senior leaders
3. Review **nature and mutual value** of our partnership
4. **Confirm or adjust current priorities and initiatives**
5. Capture **comments for future efforts**
6. Build **comradeship and fellowship** among our newly formed team

# Meeting Agenda...

- **4:00 to 4:40 – Business Meeting**
  - Open meeting by Art De Groat, Executive Director of Military & Veterans Affairs (DOMA)
  - **Self-Introductions**
  - Remarks by Kansas State University President Schulz
  - Overview of Partnership –Art DeGroat
  - Remarks by Commanding General MG Grigsby
  - **Resolution signing by President and Commanding General**
  - Concluding comments/Wrap up by Art DeGroat
- **4:40 – 5:00 - General Grigsby and President Schulz move to Library for photos and media engagement – participants move to Great Room for reception/fellowship**
- **4:45 – 6:00 – Social in Great Room (Note: Team photo to be taken)**

Please Introduce yourself and your position...



...and where you are from..or came from?



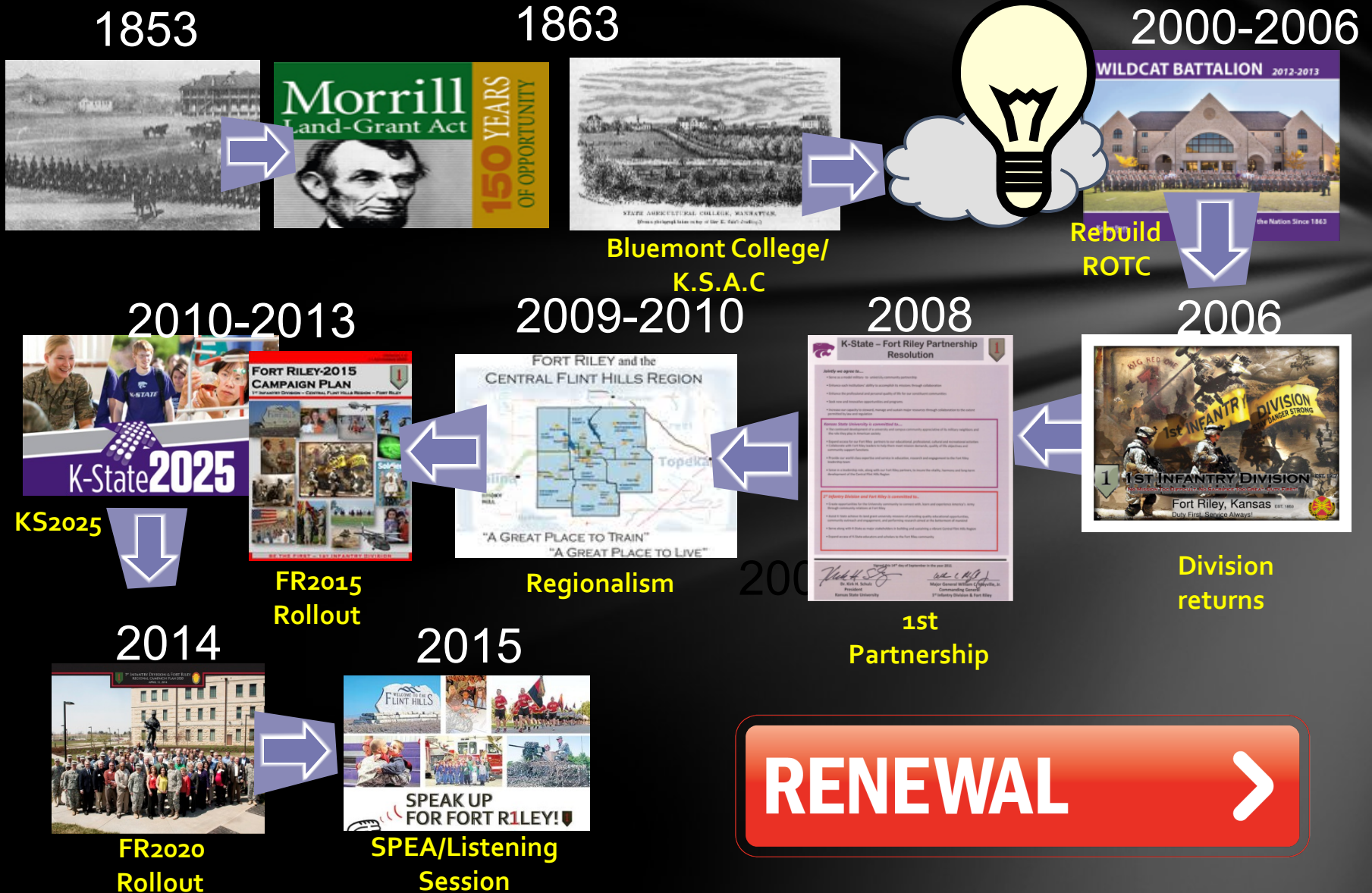
# Remarks by President Kirk Schulz





# K-State-Fort Riley Partnership

## a New Tradition...for Mutual Strength...



# The K-State – Fort Riley Partnership Concept...



## **Theoretical Impetus for Partnership...**

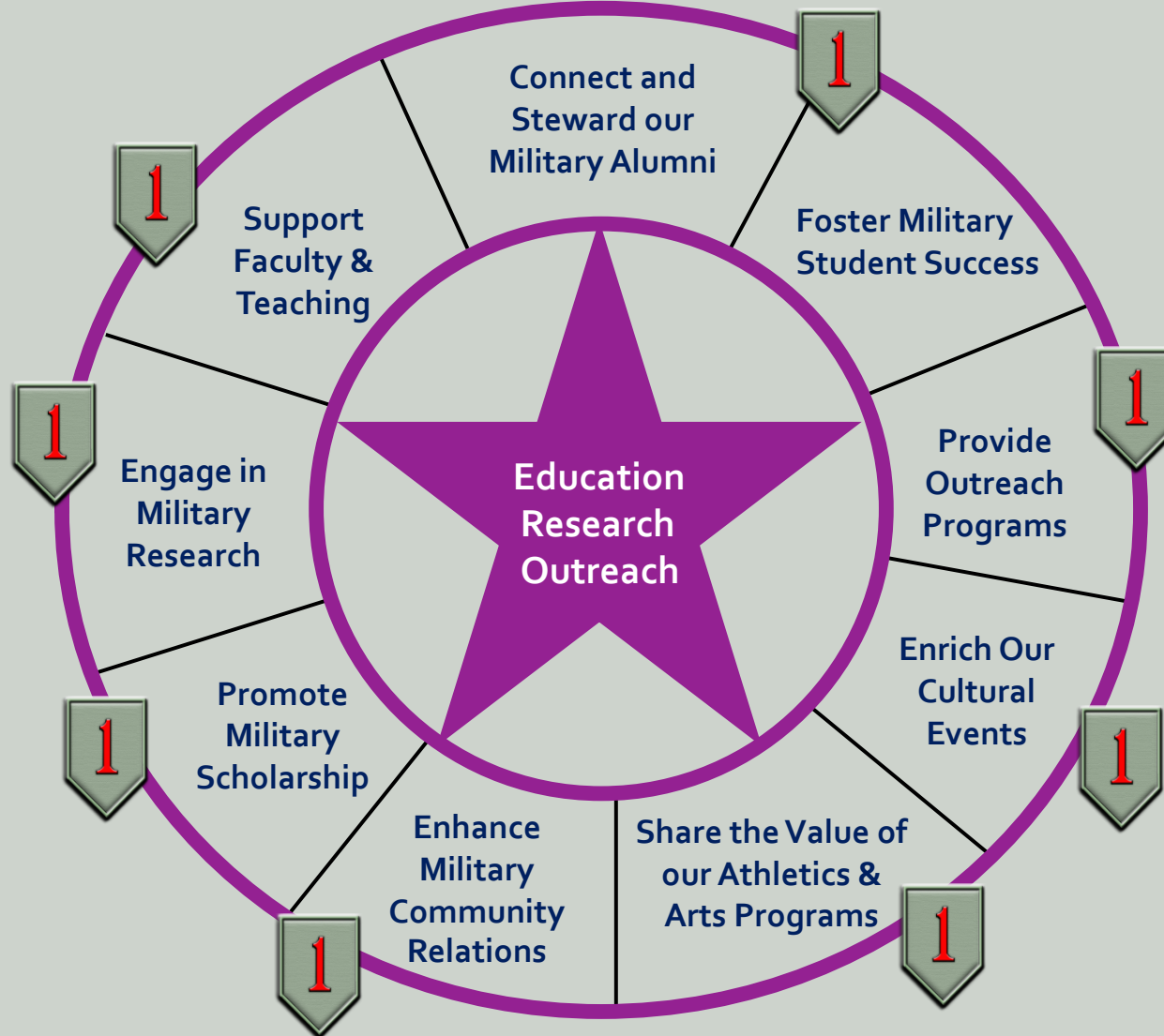
**Build Psychological Sense of Community**

**Broaden Institutional Mindsets**

**Enhance Social and Psychological Capital**

**Engage in Leader Development Broadening  
Experiences**

# A "Whole-of-University" Approach...





# Fort Riley Strategic Lines of Effort



# The Value Proposition of Our Partnership





# THE K-STATE – FORT RILEY PARTNERSHIP

STRIVING TO BUILD THE MOST MILITARY-INCLUSIVE COMMUNITY IN THE NATION

**DR. KIRK SCHULZ**  
**PRESIDENT, KANSAS STATE UNIVERSITY**





# THE K-STATE – FORT RILEY PARTNERSHIP

## STRIVING TO BUILD THE MOST MILITARY-INCLUSIVE COMMUNITY IN THE NATION

### Partnership Service Area

Leader & Soldier Professional Development

### Department of the Army Priorities

Adaptive Army Leaders for a Complex World  
Soldiers Committed to Our Army Profession



### Big Red One Line of Effort

Mission Readiness



***“Our #1 priority is, and will continue to be, leader development.”***

*- GEN Raymond Odierno, Chief of Staff, US Army*

### Landon Lecture Series



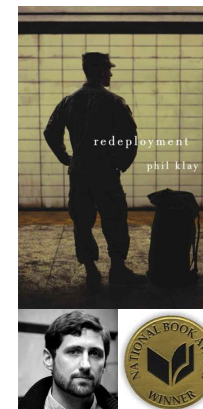
GEN Martin Dempsey delivers a Landon Lecture at K-State on 10/1/12. His lecture was attended by leaders from the University, the community, & Ft. Riley.



The Ft. Riley Combatives Team is sponsored, equipped, & professionally trained through its relationship with K-State. The team won the 2014 US National Pankration Tournament (a form of mixed martial arts), where several members qualified for the World Championships.



GEN (Ret.) Richard Myers commissions K-State's ROTC graduates as second lieutenants. US Army Cadet Command considers K-State one of its “Flagship” programs.



Many Ft. Riley leaders & soldiers attended author & Marine Corps Veteran Phil Klay's lecture on his book, “Redeployment” at K-State on 10/1/14, just weeks before he was awarded the prestigious National Book Award





# THE K-STATE – FORT RILEY PARTNERSHIP

## STRIVING TO BUILD THE MOST MILITARY-INCLUSIVE COMMUNITY IN THE NATION

Partnership Service Area  
Mission Support

Department of the Army Priorities

A Globally Responsive & Regionally Engaged Army  
A Ready & Modern Army



Big Red One Line of Effort  
Mission Readiness



***"We have learned many lessons over the last 10 years, but one of the most compelling is that – whether you are working among citizens of a country, or working with their government or Armed Forces – nothing is as important to your long term success as understanding the prevailing culture and values."***

*- GEN Raymond Odierno, Chief of Staff, US Army*



*K-State's Dean of Arts & Sciences Dr. Peter Dorhout discusses "Dagger University" with former 2<sup>nd</sup> HBCT Commander COL Jeff Broadwater*



*K-State President Dr. Kirk Schulz and Art DeGroat during unprecedented delegation field visit to the 1<sup>st</sup> Infantry Division in Basra, Iraq in 2010*



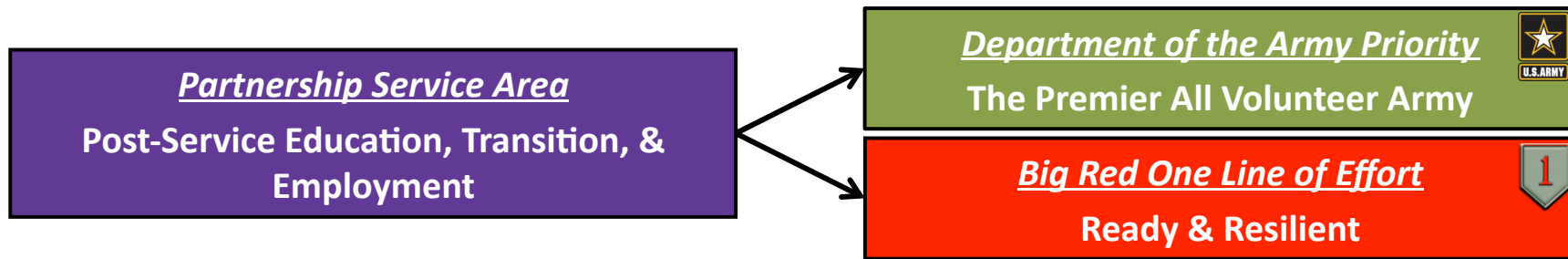
*University Faculty & International Student Instructors for African Cultural Education*





# THE K-STATE – FORT RILEY PARTNERSHIP

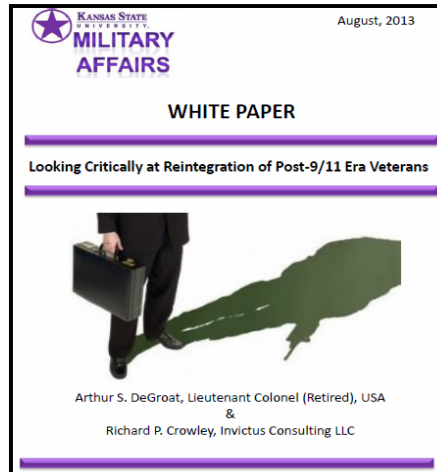
## STRIVING TO BUILD THE MOST MILITARY-INCLUSIVE COMMUNITY IN THE NATION



***“Last year, the Army spent more than \$430 million on Unemployment Compensation for Ex-Servicemembers (UCX), and we want to see that amount substantially decreased.”***

*- Raymond F. Chandler, III, Sergeant Major of the Army, February 26, 2014*

*Before the Committee on Appropriations Defense Subcommittee, US House of Representatives*



*Scholarly White Paper analyzing & providing recommendations for evidence-based approaches to the challenges of veteran transition & unemployment*



*Front page article in Kansas City Star Magazine covering K-State's success in finding gainful employment for local veterans. The article generated useful discussion among its circulation of over 200,000 people.*



*K-State hosts career networking events to link up veterans & soldiers preparing to transition with Edward Jones & other employers who are currently hiring*



# THE K-STATE – FORT RILEY PARTNERSHIP

## STRIVING TO BUILD THE MOST MILITARY-INCLUSIVE COMMUNITY IN THE NATION

### Partnership Service Areas

Soldier Broadening & Personal Development  
Community Building Experiences

### Department of the Army Priorities

Adaptive Army Leaders for a Complex World  
The Premier All Volunteer Army



### Big Red One Line of Effort

Community



***"If you want to stay connected to the American Public, you can't do it episodically."***

*- GEN Martin Dempsey, Chairman of the Joint Chiefs of Staff*

## Helping Bridge the Civil-Military Gap



*Danger-6 leads K-State onto the field in front of 50,000 fans on Ft. Riley Day at Bill Snyder Family Stadium*



*K-State sorority members greet Ft. Riley soldiers returning from a recent deployment*



*A K-State Rugby Team member receives pointers from a Big Red One soldier*



*Eric Stonestreet & Director of Military & Veterans Affairs LTC (Ret.) Art DeGroat*





# THE K-STATE – FORT RILEY PARTNERSHIP

## STRIVING TO BUILD THE MOST MILITARY-INCLUSIVE COMMUNITY IN THE NATION

Partnership Service Area  
Family & Soldier Resiliency

Department of the Army Priorities

Adaptive Army Leaders for a Complex World  
The Premier All Volunteer Army



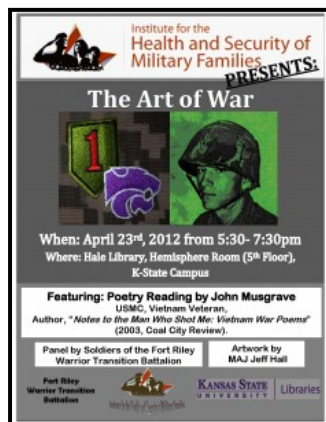
Big Red One Line of Effort

Ready & Resilient



***“We can’t afford to lose members of our Army family to suicide. There is no room for bystanders.”***

*- GEN Raymond Odierno, Chief of Staff, US Army*



In 2012, K-State presented a panel discussion led by soldiers from Ft. Riley’s WTB, who shared their powerful stories of experiencing & coping with PTSD with an audience of students, faculty, and other Ft. Riley soldiers



MG Funk presents Dr. Briana Nelson-Goff, Director of the K-State Institute for the Health & Security of Military Families, with the Department of the Army Outstanding Civilian Service Award for her work in enhancing resiliency among soldiers and their family members through the Partnership



K-State’s College of Education was awarded the 2014 H.G. “Pete” Taylor Partnership of Excellence Award for an outstanding partnership formed between military installations and school districts that serve military children



The University’s “Operation: Military Kids” provides a variety of programs from summer camps, community awareness campaigns, mobile tech-lab use





# THE K-STATE – FORT RILEY PARTNERSHIP

## STRIVING TO BUILD THE MOST MILITARY-INCLUSIVE COMMUNITY IN THE NATION

### *Partnership Endorsements*



*"Our future is well-served when our armed forces connect to our nation's future civilian leaders in our exceptional institutions of higher learning. In this case, the teaming of those who strive to live up to the motto 'Duty First' and those who work to earn their degrees from K-State is particularly inspiring."*

*– GEN Martin Dempsey, Chairman of the Joint Chiefs of Staff*

*"Your article is a real eye opener. It is very well done and quite persuasive about many of the short-comings in current efforts. You are on to something important and have made a real contribution to the broader effort to take care of our veterans."*

*– Robert M. Gates, Former Secretary of Defense, on a Partnership White Paper addressing Veteran Transition & Employment*



*"I don't know many university presidents who have flown to Iraq. That speaks volumes."*

*– GEN (Ret.) Richard Myers, Former CJCS, on President Kirk Schulz's 2010 trip to Basra, Iraq to visit the 1<sup>st</sup> ID*

*"[The Partnership with K-State] gives me access to some of the brightest minds in the country to help us solve some of these wicked problems. Last year before we deployed to Afghanistan we were able to use them to give us ideas on economic development, on agriculture – you name a subject, and they have an expert on it."*

*– MG Paul Funk, Commander, 1st Infantry Division & Ft. Riley*



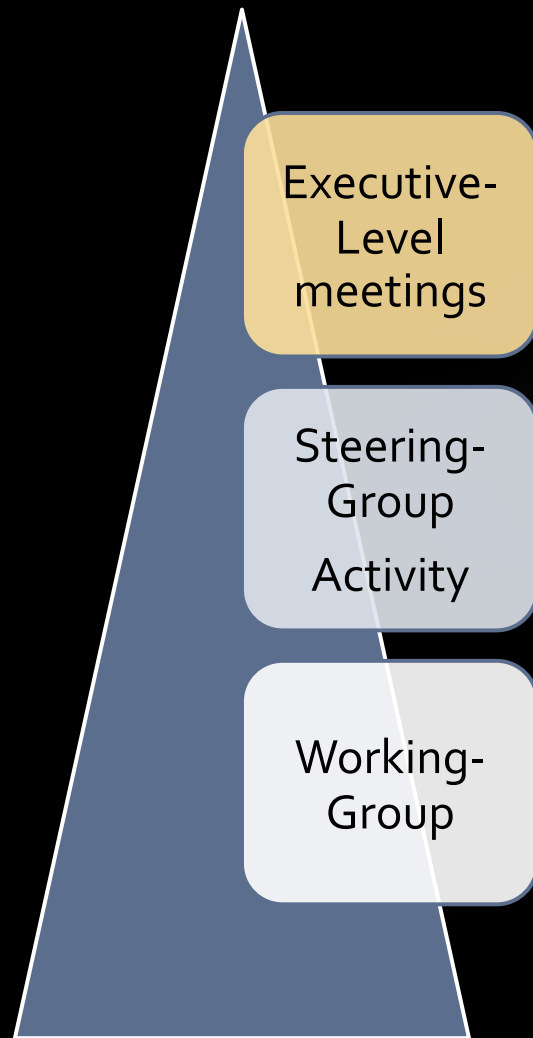
*Eight universities and colleges near military bases, including the University of Louisville, UT-San Antonio, Syracuse, & San Diego St. have approached K-State to learn how our Partnership with Ft. Riley works*

# Fort Riley Focused Areas/Priorities





# Strategic Partnership Management Structure



- Annual Program Review - Aug 2016 @ Ft Riley

- K-State – Ft Riley Partnership Quarterly Steering Group Meetings to be conducted:

- 1QFY15---DECEMBER
- 2QFY16---MARCH
- 3QFY16--- JUNE
- 4QFY16---SEPTEMBER

- K-State Program Representatives attends 1<sup>st</sup> ID monthly G7 Effects Working Groups (EWG) meetings

# Remarks by Major General Wayne Grigsby





# Partnership Resolution Signing...



# Jointly, we agree to....



1. Serve as a model military-to-university institutional partnership
2. Leverage our diverse cultures to develop alternate ideas and improved approaches to challenges of mutual interest, focusing on the areas of professional development, quality of life, transition and family well-being and resiliency
3. Organize, support and participate in innovative opportunities and programs to serve our constituent communities and teams
4. Improve the efficiency of our resource stewardship, management and sustainment through cooperation to the extent permitted by law and regulation

# Kansas State University

## is committed to....



1. Becoming the most military-inclusive public university in the country through an intentional effort to incorporate its military-connected neighbors into its professional enterprise and campus community
2. Providing world-class expertise in education, research and engagement to support the continued development and success of Fort Riley leaders, soldiers and family members
3. Expanding access for our Fort Riley partners to benefit from our educational, professional, cultural and recreational activities that enhance mission readiness, sustainability and resilience
4. Cooperating with our Fort Riley partners to lead the effort to ensure the vitality, harmony and long-term development of the Central Flint Hills Region and community



# 1<sup>st</sup> Infantry Division and Fort Riley is committed to...



1. Create opportunities for our University partners to connect with, learn from and experience America's Army through relationships with the 1<sup>st</sup> Infantry Division and Fort Riley
2. Supporting the University's land grant missions of providing quality educational opportunities, community outreach, and performing research aimed at the betterment of mankind with our local and extended military communities
3. Expanding access for K-State educators, students and professionals to our installation and community
4. Serving along with K-State as major stakeholders in building and sustaining a vibrant Central Flint Hills Region



# SIGNING OF RESOLUTION





Floor is Open for Comments...

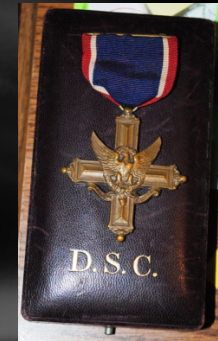
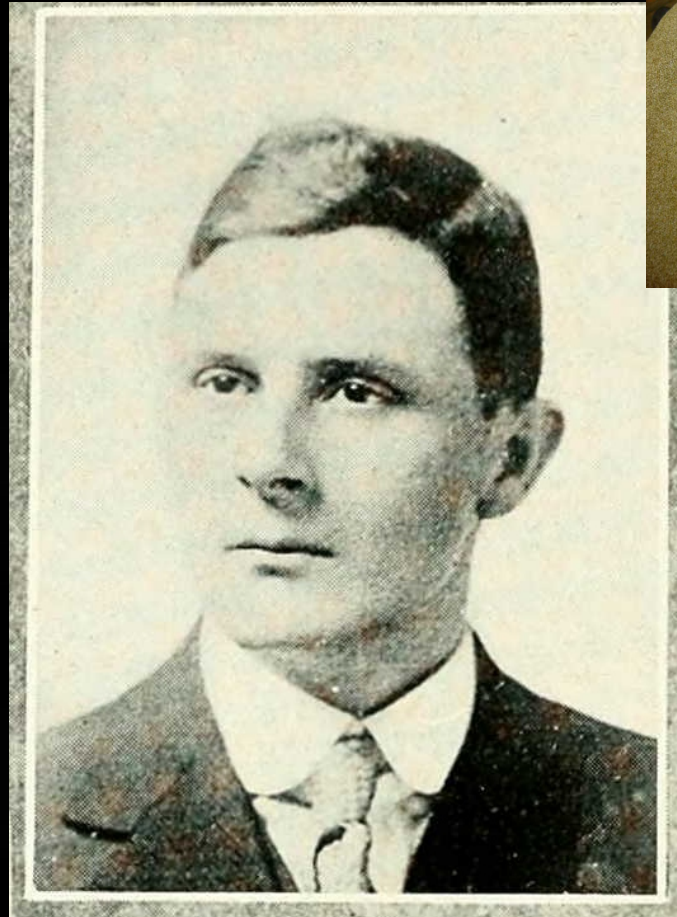


Concluding Remarks...



## 48 FALLEN...48 FOUND PROJECT

# CAPTAIN WILLIS COMFORT



# Buried Manhattan, Kansas



# Meeting Agenda...

- **4:00 to 4:40 – Business Meeting**
  - Open meeting by Art De Groat, Executive Director of Military & Veterans Affairs (DOMA)
  - **Self-Introductions**
  - Remarks by Kansas State University President Schulz
  - Overview of Partnership –Art DeGroat
  - Remarks by Commanding General MG Grigsby
  - **Resolution signing by President and Commanding General**
  - Concluding comments/Wrap up by Art DeGroat
- **4:40 – 5:00 - General Grigsby and President Schulz move to Library for photos and media engagement – participants move to Great Room for reception/fellowship**
- **4:45 – 6:00 – Social in Great Room (Note: Team photo to be taken)**