

COVID-19 Compliance Survey Results

173 total responses

111 qualifying responses from those who worked on campus

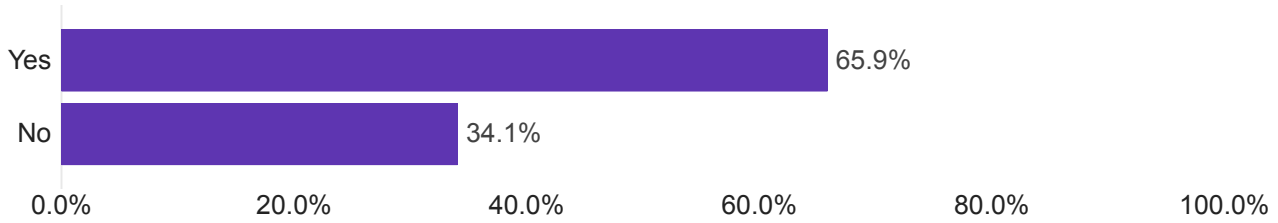
Survey administered 02/25-03/17



Over the last two weeks, have you worked on campus?

173 Responses

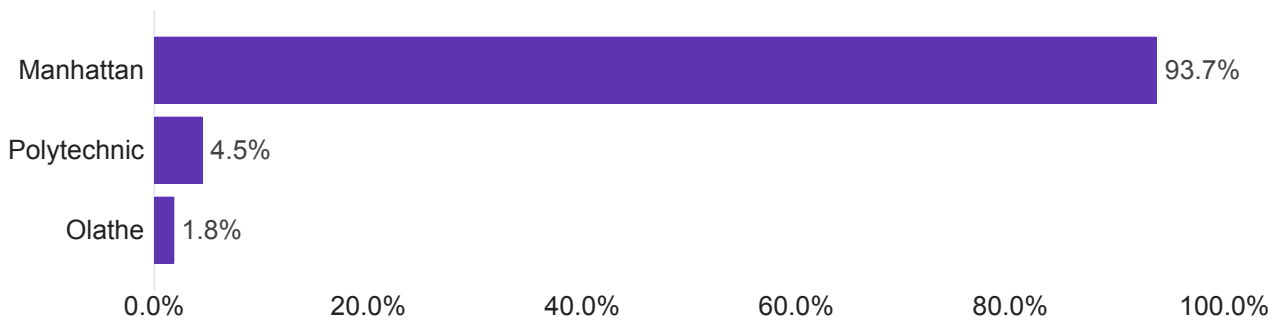
Field	Percentage
Yes	65.9%
No	34.1%



On what campus are you primarily located?

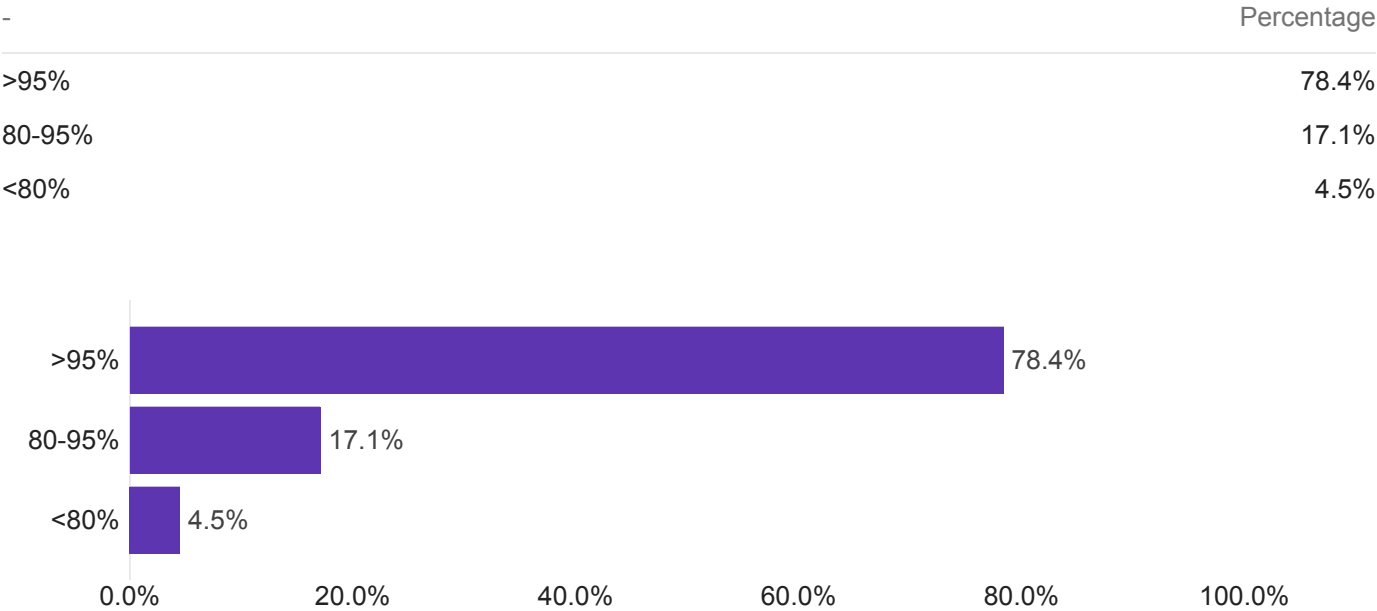
111 Responses

-	Percentage
Manhattan	93.7%
Polytechnic	4.5%
Olathe	1.8%



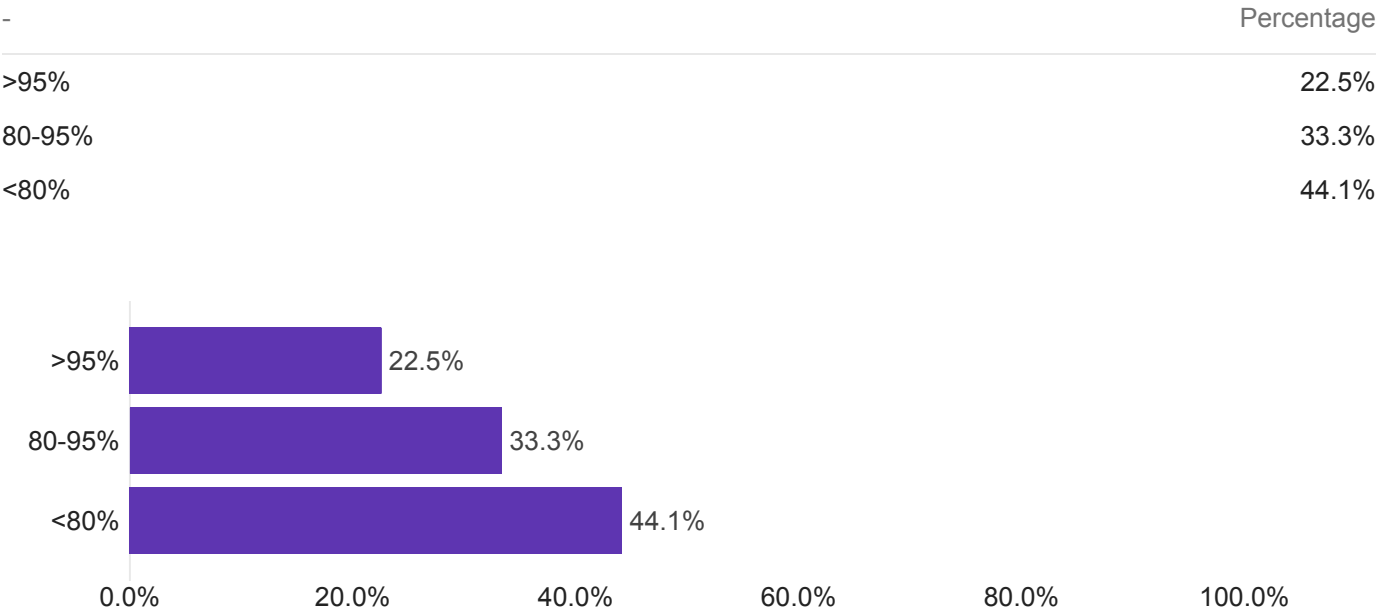
1. Approximately what percentage of students, faculty, and staff have you observed wearing face coverings inside campus buildings and classrooms?

111 Responses



2. Approximately what percentage of students, faculty, and staff have you observed wearing face coverings outside while on campus?

111 Responses



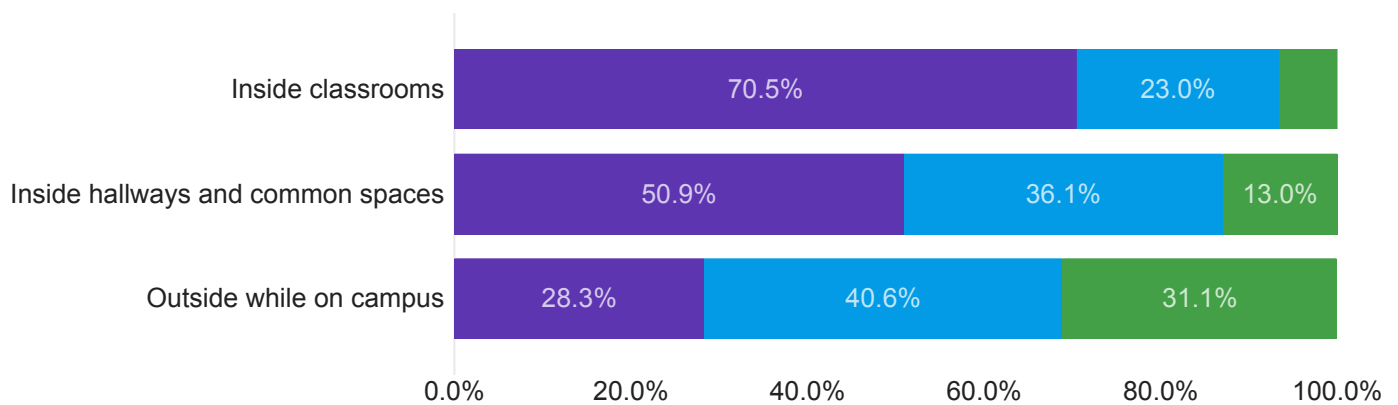
3. Based on your observations, have faculty, staff, and students adhered to 6-foot social distancing requirements in the following situations?

112 Responses

	Yes, for the most part	Somewhat	No, for the most part	Can't judge
Inside classrooms	39.1%	12.7%	3.6%	44.5%
Inside building hallways and other common spaces	49.5%	35.1%	12.6%	2.7%
Outside while on campus	27.3%	39.1%	30.0%	3.6%

Chart below excludes Can't Judge

● Yes, for the most part
 ● Somewhat
 ● No, for the most part



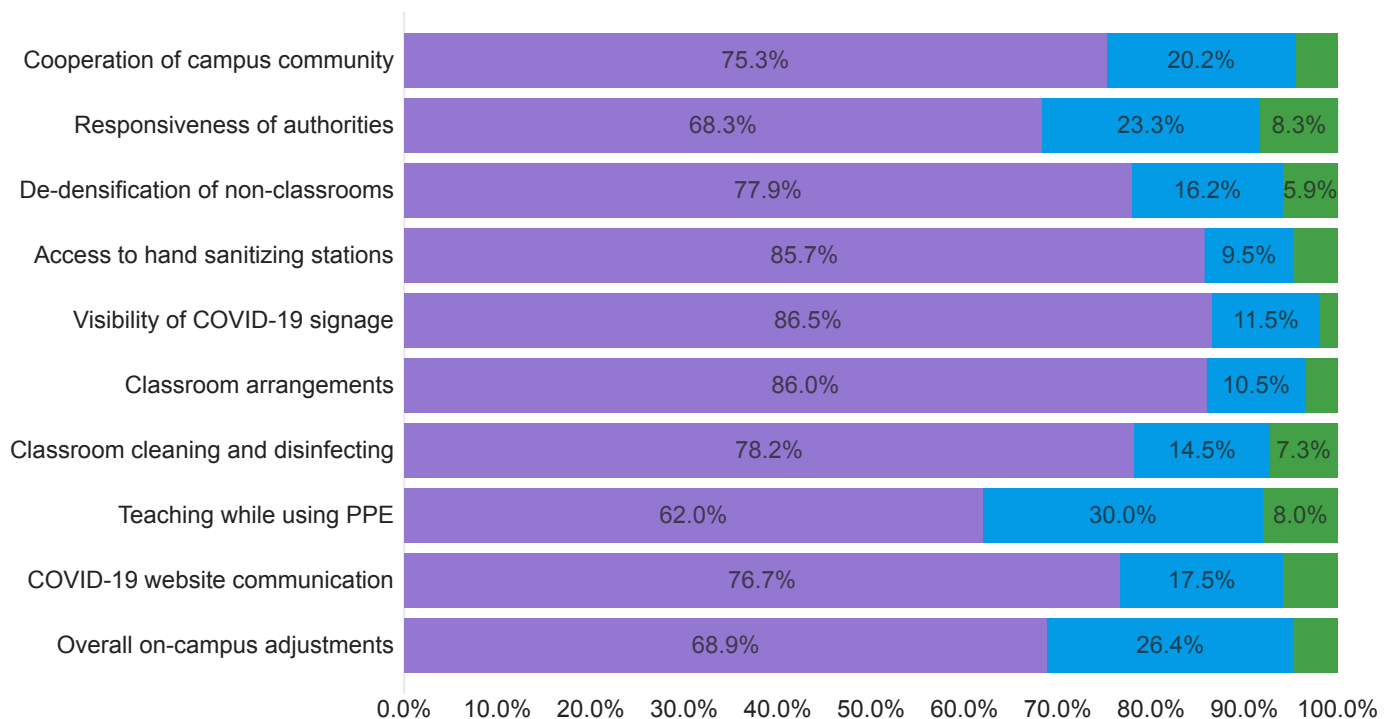
4. From your perspective, what has gone well or not gone well in the past two weeks regarding COVID-19 protocols and compliance?

112 Responses

Field	Has Gone Well	Some Issues	Has Not Gone Well	Can't Judge
Cooperation of campus community members when asked to comply with policies	59.8%	16.1%	3.6%	20.5%
Responsiveness of applicable authorities when issues arise	37.3%	12.7%	4.5%	45.5%
De-densification of non-classroom spaces in campus buildings	47.7%	9.9%	3.6%	38.7%
Access to hand sanitizing stations	82.6%	9.2%	4.6%	3.7%
Visibility of COVID-19 signage	81.8%	10.9%	1.8%	5.5%
Classroom arrangements for social distancing	44.5%	5.5%	1.8%	48.2%
Classroom cleaning and disinfecting	39.1%	7.3%	3.6%	50.0%
Teaching while using personal protective equipment	28.2%	13.6%	3.6%	54.5%
Communication provided through the COVID-19 website	72.5%	16.5%	5.5%	5.5%
Overall on-campus adjustments for COVID-19	66.4%	25.5%	4.5%	3.6%

Chart below excludes Can't Judge

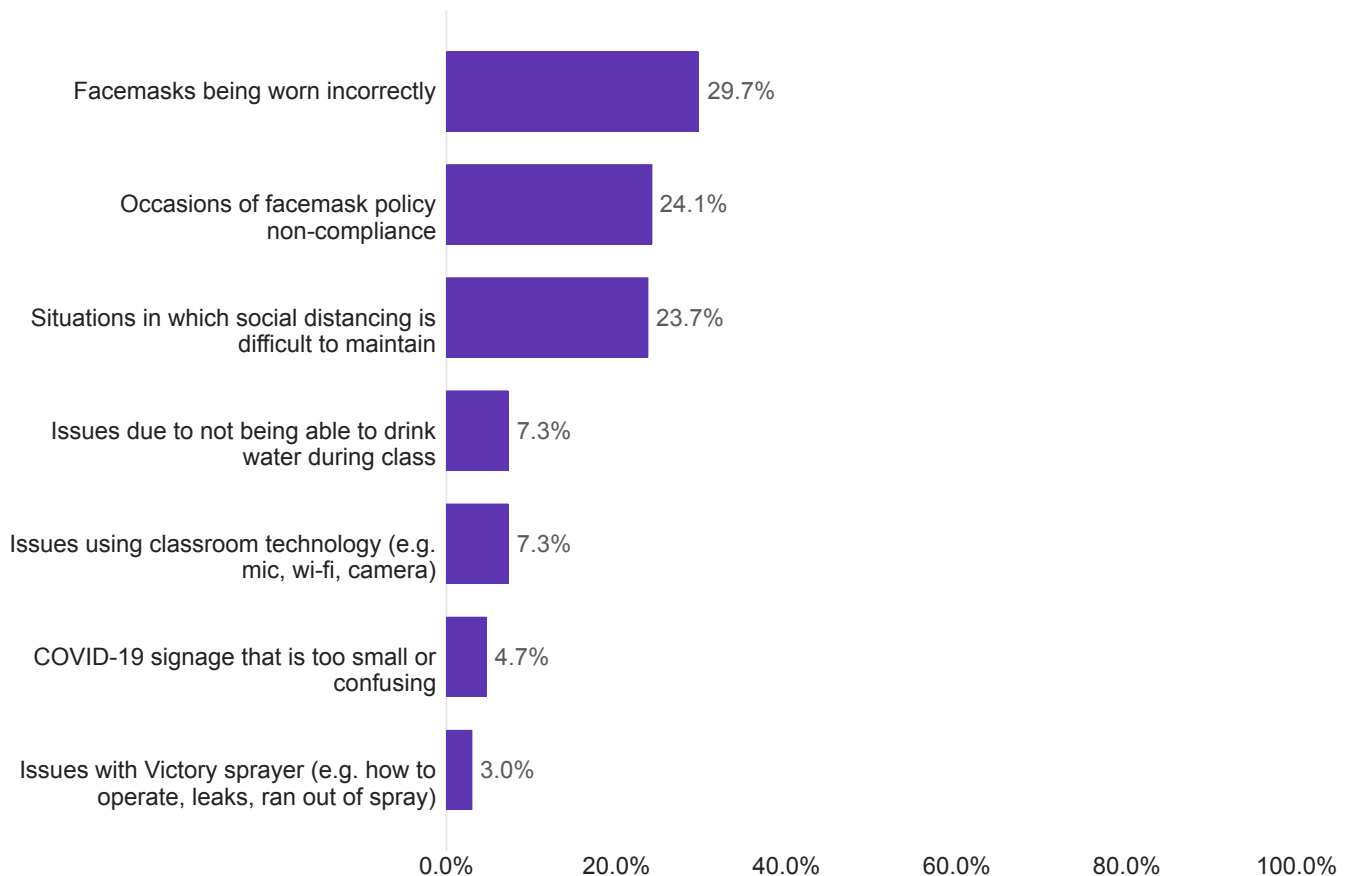
● Has Gone Well ● Some Issues ● Has Not Gone Well



5. From your perspective, which of following specific issues have you observed or experienced in the past two weeks while working on campus? (select all that apply)

94 Responses

	Percentage of Choices
Facemasks being worn incorrectly	29.7%
Occasions of facemask policy non-compliance	24.1%
Situations in which social distancing is difficult to maintain	23.7%
Issues due to not being able to drink water during class	7.3%
COVID-19 signage that is too small or confusing	4.7%
Issues using classroom technology (e.g. mic, wi-fi, camera)	7.3%
Issues with Victory sprayer (e.g. how to operate, leaks, ran out of spray)	3.0%



K-State COVID-19 Compliance Survey Results - Comments

February 25-March 18, 2021 – 173 Responses

1a. Further comments about face covering compliance inside buildings and classrooms

Been a lot less mask compliance last two weeks

We have a faculty in our dept who doesn't wear a face mask when he's outside of his office. He'll wear it around his neck/chin and won't have his nose and mouth covered.

Good compliance

People do not like to wear masks over their noses AND mouths.

Inside of Hale observed several students all sitting at same table not wearing their masks. Asked them to comply to the mandate and they did as long as we were in there.

I think it's time for masks to become a choice. I've been exposed to covid twice and didn't get it either time.

Went to campus, had hall way conversation w/ colleague and she did not put on her mask--she was in her office and we were 6 feet away. I wonder if she forgot she didn't have it on??

I have witnessed 100% student and faculty compliance. I regularly see office staff without masks, but behind plexiglass dividers.

Above answer only pertains to laboratory spaces and communal faculty/staff areas (NOT classrooms)

We simply turn students away if they come to the dining center without a face covering. If they remove it while not eating they are turned into the HDS conduct system to be counseled.

Students take off mask when not monitored inside the classroom

I've started seeing more students not wearing face masks when they are studying alone in our building.

I have noticed that students sometimes have their noses out and/or that they pull up their masks as I am walking up.

I am seeing more and more people be out of compliance with face coverings

The staff at the Campus Post Office almost never wear their masks--including while helping customers. They are often much closer than 6 feet from each other, and certainly from those trying to send their mail.

I've never had a student not wear a mask and they all are very cooperative about procedures.

From my observations, I have seen everyone (faculty, staff, students, and visitors) wearing masks indoors.

Certain areas continue to be problematic.

we have people not wearing masks during meetings inside.

None

Outside companies (guests) using the K-State Olathe classrooms and conference rooms have not been wearing face coverings.

It is time to start opening up and getting back to times before covid.

Has been good. Needs to continue!!

Face masks should be a choice for individuals not mandated by the school.

I work in Dykstra Hall and it's 100% compliance

Library is really bad

Facilities maintenance staff only wears facemasks when in clear view of students. Very annoying.

I've seen more noses uncovered in the last few weeks. People seem to be tiring of the masks...

Facilities (excluding janitors) and contract workers are not wearing masks, and when reminded react annoyed.

I only work in one building. My answer is the same for the two or three other buildings I have visited in the last month.

People seem to be getting lazy and not regularly wearing masks in communal spaces.

I used to see not-wearing face coverings inside the campus at night

Pepsi delivery doesn't wear masks

2a. Further comments about face covering compliance outside while on campus

Seems like hardly anybody is wearing them outside on campus around buildings anymore.

I see no need for face coverings outside when walking with friend groups or participating in activities.

NONE

Observed a staff member not wearing a mask while working with materials.

Students, faculty in larger groups or in classes seem to be wearing masks outdoors, but when moving about individually or in small groups often do not.

It's outside and fresh air. I don't think masks should be mandated for outside.

I have not seen any faculty or students without face coverings.

Above answer only pertains to laboratory spaces and communal faculty/staff areas (NOT classrooms)

Most of those not wearing masks didn't really need to based on the fact that they were >6' from anyone else. this question doesn't take into account people who are alone or safely distanced from others who can safely walk without a mask so overall compliance is good - both ways

Face coverings are not worn much outside of campus

Outside compliance has dropped a little bit in my observations

People walking outside while on campus I have observed are alone and very far from others.

Outside and keeping a social distance seems very low risk and completely acceptable.

Most people who were not wearing masks were walking/sitting by themselves.

Mask Policy should be enforced

From my observations, I have seen everyone wearing masks outside while on campus if they are in close proximity to others. If someone not near someone else, I'll see them remove their mask but put it back on if they walk passed someone. I'll admit I'll pull my mask down while outside alone but will recover if I'm getting close to someone else.

most students I see walking around campus on sidewalks are not wearing masks, even when walking in groups.

I only worked on campus on 1 day in the last two weeks and on my walks through campus on that day, there were very few people outside. Of those few (approx. 12), most of the people I observed outside had their masks pulled away from their faces (approx. 8). Also, everyone I observed was socially distanced.

When individuals are walking together I do see face coverings. However, when someone is walking alone and appears to be socially distanced, they may not have a face covering on.

Wearing a facemask outside needs to go away and is ridiculous.

Not terrible, but could be better.

It seems a bit ridiculous to wear a mask outside if you are by yourself.

I do not see many using them outside the buildings

If in groups, yes, if by oneself, I don't see the need. I carry one in case approached by someone, otherwise, I do not wear one and I see about the same on campus

We should not have to wear them outside

~25% wear masks when outside.

3a. Further comments about 6-foot social distancing compliance

See lots of groups of students walking together without mask or 6 ft distance

With hospitalizations and deaths at basically 0 for those under 30 restrictions outside of buildings seem excessive.

It is very difficult to keep the 6-foot social distancing while working in groups in the classroom, especially in a second language class.

There are some instances where 6-foot distancing may not be feasible. But for the most part, everyone is doing their best to distance.

in big classrooms they are separate but will cluster to chat between classes. in small classrooms they sit closer together and are not 6 feet apart; this is by choice as there is room to move their chairs apart.

Yes, if walking among strangers, no if they're with their friends/colleagues.

I did not notice any problems with the 6-foot social distancing compliance.

Difficult to maintain, particularly in laboratory settings where students are up and moving about.

We try but not always possible

It's been real bad. I have stats on Library. I have taken them in my work.

I have started to see activities where masked people are closer than 6 feet.

4a. Further comments on what has gone well regarding COVID-19 protocols and compliance

If there isn't any way of enforcing the rules (fines, etc.), there are going to be certain people who don't wear their masks when they should.

I think the university authorities and everyone else on Campus are doing their best to follow the Covid-19 protocols.

Hats off to the campus custodial team! They continue to do an amazing job in their efforts to keep students, faculty and staff healthy and safe.

none

It's really bad!

Overall, compliance in classrooms has been excellent.

4b. Further comments on what has not gone well regarding COVID-19 protocols and compliance

We have very few students coming to class or even joining class on Zoom. It is also reflected in their performance in classes.

More active enforcement of policy

You can lead people to the sanitizer stations but it doesn't mean they'll use it. Lots of people walk right past the hand sanitizer.

Students not sitting where labeled. Labels coming off. Cleaning is not necessary, and a hassle.

Teaching with a mask is difficult, especially in a second language class.

Enforcement of mask-wearing is being left up to individual supervisors and their opinions. Some are overly strict, others let their employees never wear masks. Desperately need better consistency in enforcement.

Teaching with a mask or shield is not optimal. It is difficult to hear/understand what students have to say when they are wearing masks. Streaming everything online at the same time as teaching in person adds another layer of complexity and stress.

the signage doesn't take into account how the building is actually used. Doors that are supposed to be exit only are common entrances and shouldn't make people walk around the building to find an acceptable entrance. Each set of exterior doors should have an entrance and exit. And, stairwell doors say out, even if you're going in to a floor so exit and entrance would have been clearer. People are using the buildings as they should even if the signage doesn't match common sense or regular use.

People in general are getting tired. Protocols on campus need to mimic the city otherwise there is conflict.

Releasing of restrictions within the community is causing people to assume they were released on campus also

Communication from central administration about future plans or policies is late and superficial.

I like the new dashboard, but it would be even more helpful if the new COVID dashboard included data from last semester as well to compare the change in infection rates over the school year.

hand sanitizer stations are always empty

Students and faculty/staff have begun to fail to adhere to the stairwell traffic directions.

Enforcing mask policy. Do not feel comfortable having to be on campus

Our college has required that we all be on campus even if we can work from home, while our KSU COVID guidelines and other colleges have required/encouraged people to work from home when possible. I feel unsafe being required to be on campus when I do not have to be.

none

wearing of the facemasks outside is a waste of time and trying to enforce is a joke.

These should be mandates made by the school. They should be recommendations and individuals should make their own risk decisions.

Construction and contractors in Hale still do not adhere to mask protocols when around others. Most notably on elevators. Some will not wear a mask and others will only cover their mouth leaving nose exposed.

Cleaning protocols have put an extra burden on already overtaxed faculty. Also WiFi in Nichols Hall is not working making it impossible to zoom in remote students

Facilities has been a serious issue. Mask compliance is low, workers do not seem to have access to masks, and contractors have either not been instructed to wear masks or have received such negative communication with regards to masks that there is just no compliance. Vaccination rollout on campus was terrible. There was no clear communication, and such unevenness with rollout that it caused serious anxiety. In addition, campus failed to notify its employees that vaccine doses were available through pharmacies in supermarkets, for which state employees were eligible.

Not enough support and appreciation for those of us who have worked through the entire pandemic

5a. Further comments on any other specific issues you've experienced regarding COVID-19 protocols and compliance

I have seen staff not wearing masks in campus offices.

office staff don't put on a mask when people enter their area.

No issue at all.

I have a couple of students in my classes who now disregard the drink policy (no drinks in class), even with reminders not to drink or eat in class.

Off campus use of face masks and social distancing is almost zero.

Lack of mask wearing by post office staff

While I do see everyone wearing masks, sometimes folks don't have their noses covered. But when asked, they'll cover their nose. Some places may be difficult to social distance, in offices for example.

Students working in study rooms in Hale often do not comply with facemask policy (not wearing at all or not wearing correctly) and often have more people in rooms or at tables than is posted.

The vaccine role out on campus has seemed political rather than following standard recommendations.

I noted earlier that I observed a few people on campus who were not wearing their masks when on campus and outside (approx. 8 people in 1 day).

The Covid-10 infection rates in saline county and Kansas as a whole have gone way down to the lowest rates since last summer, but our protocols have not changed. the rules should reflect this good outlook. we should do away with the restrictions now, including the mask rules. especially for vaccinated people. Once we get vaccinated,

there is not anymore we can do to mitigate risk. We should be able to return to normal life. We cannot live this way forever and the virus will not go away entirely any time soon.

Person who teaches before me never sanitizes the room so I have to do it before and after I teach.