

COVID-19 Compliance Survey Results

241 total responses
161 qualifying responses from those who worked on campus

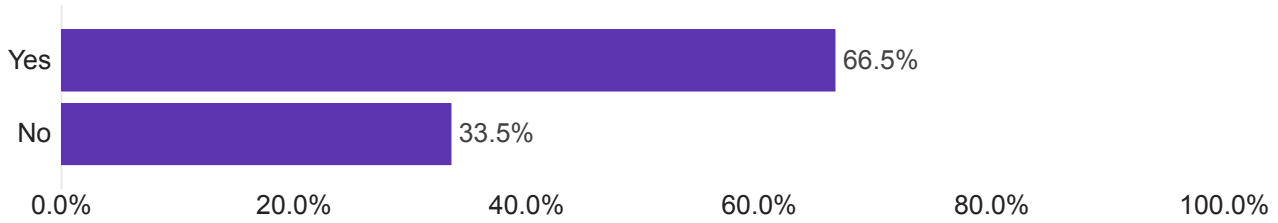
Survey administered 02/7-02/10



Over the last two weeks, have you worked on campus?

242 Responses

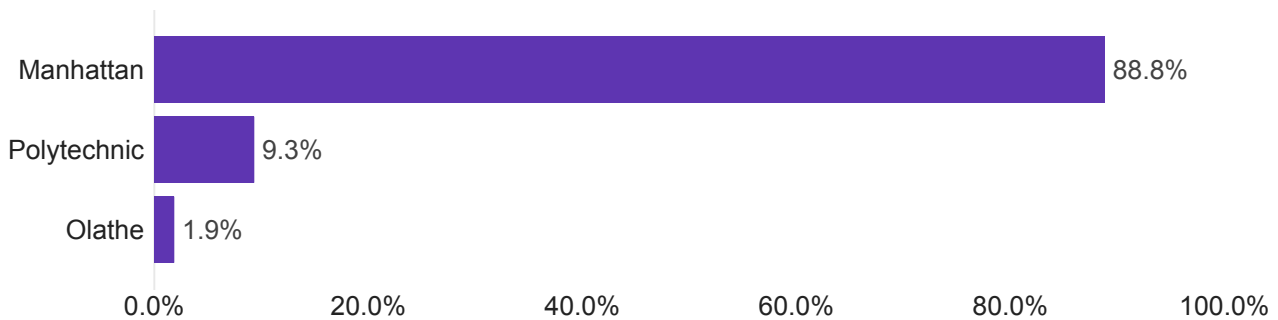
Field	Percentage
Yes	66.5%
No	33.5%



On what campus are you primarily located?

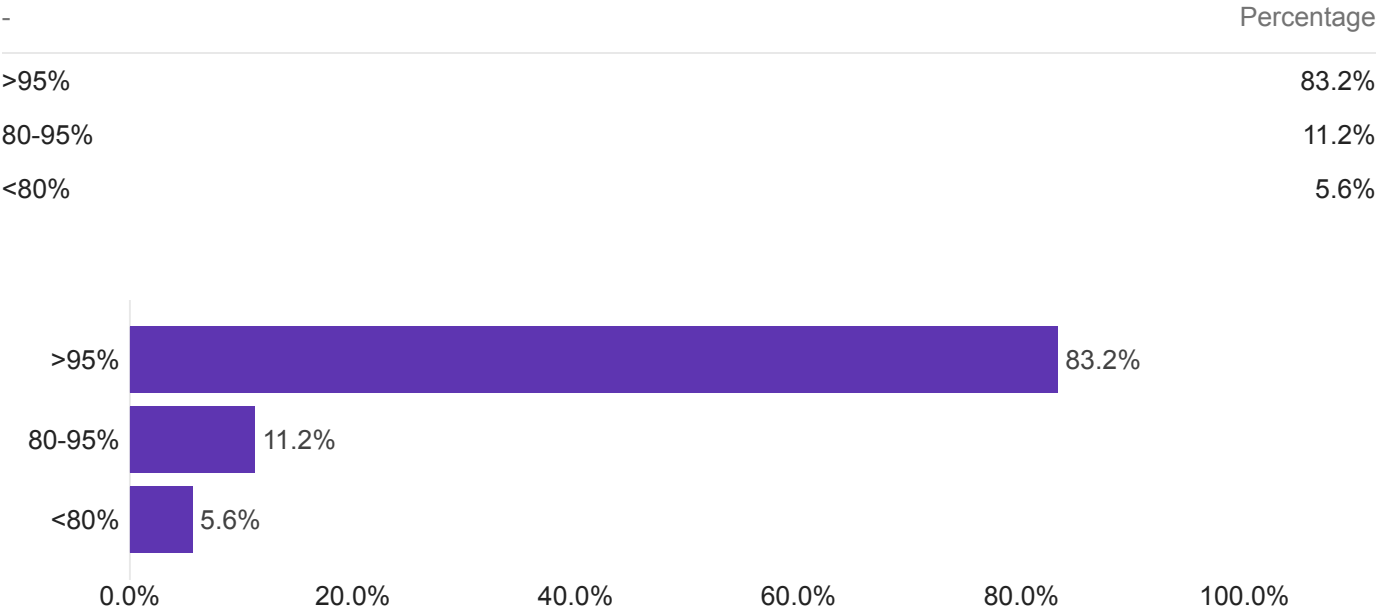
161 Responses

-	Percentage
Manhattan	88.8%
Polytechnic	9.3%
Olathe	1.9%



1. Approximately what percentage of students, faculty, and staff have you observed wearing face coverings inside campus buildings and classrooms?

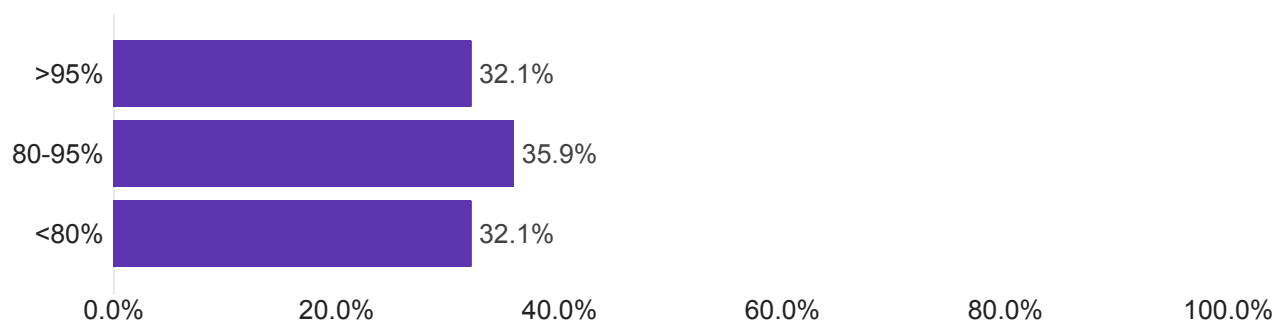
161 Responses



2. Approximately what percentage of students, faculty, and staff have you observed wearing face coverings outside while on campus?

156 Responses

	Percentage
>95%	32.1%
80-95%	35.9%
<80%	32.1%



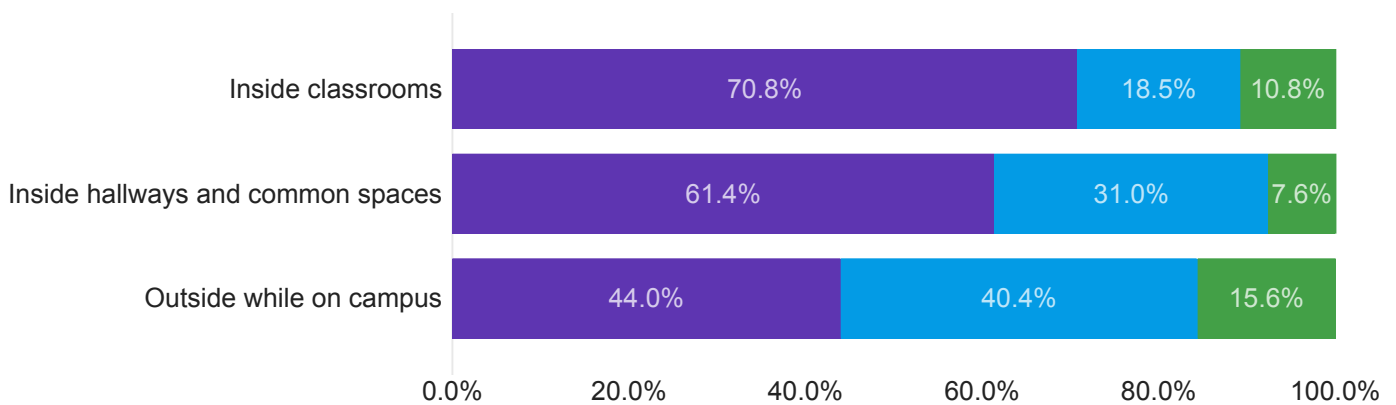
3. Based on your observations, have faculty, staff, and students adhered to 6-foot social distancing requirements in the following situations?

161 Responses

	Yes, for the most part	Somewhat	No, for the most part	Can't judge
Inside classrooms	28.7%	7.5%	4.4%	59.4%
Inside building hallways and other common spaces	56.0%	28.3%	6.9%	8.8%
Outside while on campus	39.2%	36.1%	13.9%	10.8%

Chart below excludes Can't Judge

● Yes, for the most part
 ● Somewhat
 ● No, for the most part



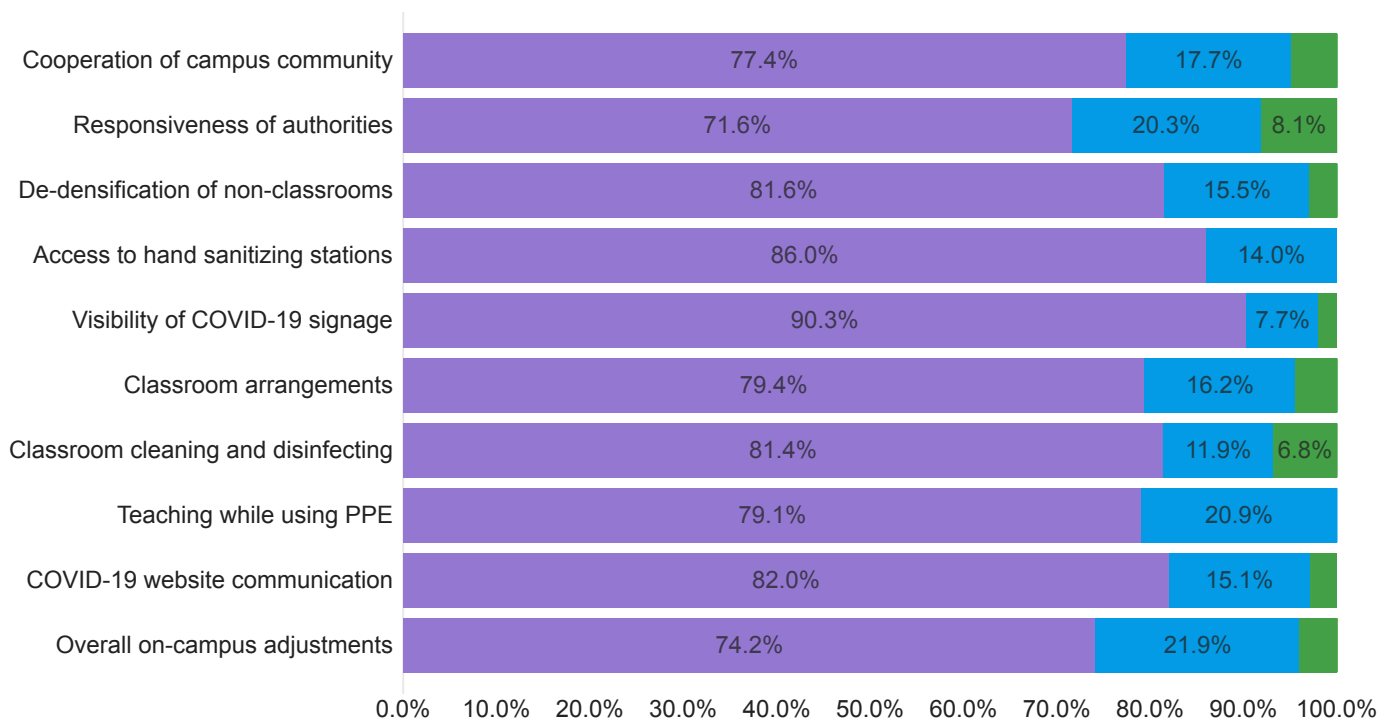
4. From your perspective, what has gone well or not gone well in the past two weeks regarding COVID-19 protocols and compliance?

160 Responses

Field	Has Gone Well	Some Issues	Has Not Gone Well	Can't Judge
Cooperation of campus community members when asked to comply with policies	60.4%	13.8%	3.8%	22.0%
Responsiveness of applicable authorities when issues arise	33.5%	9.5%	3.8%	53.2%
De-densification of non-classroom spaces in campus buildings	52.8%	10.1%	1.9%	35.2%
Access to hand sanitizing stations	82.7%	13.5%	0.0%	3.8%
Visibility of COVID-19 signage	88.1%	7.5%	1.9%	2.5%
Classroom arrangements for social distancing	34.2%	7.0%	1.9%	57.0%
Classroom cleaning and disinfecting	30.0%	4.4%	2.5%	63.1%
Teaching while using personal protective equipment	21.5%	5.7%	0.0%	72.8%
Communication provided through the COVID-19 website	71.7%	13.2%	2.5%	12.6%
Overall on-campus adjustments for COVID-19	70.4%	20.8%	3.8%	5.0%

Chart below excludes Can't Judge

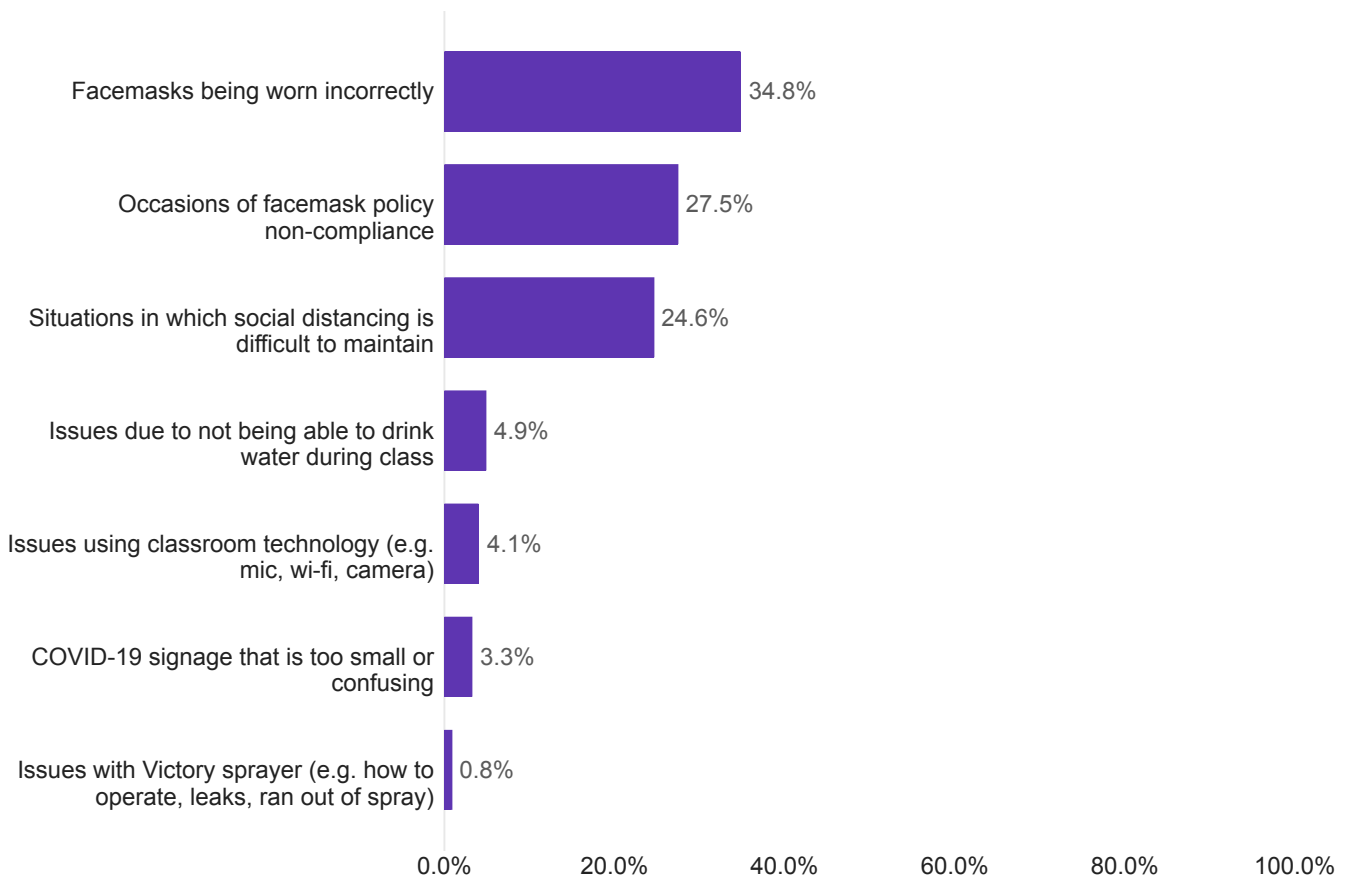
● Has Gone Well ● Some Issues ● Has Not Gone Well



5. From your perspective, which of following specific issues have you observed or experienced in the past two weeks while working on campus? (select all that apply)

121 Responses

	Percentage of Choices
Facemasks being worn incorrectly	34.8%
Occasions of facemask policy non-compliance	27.5%
Situations in which social distancing is difficult to maintain	24.6%
Issues due to not being able to drink water during class	4.9%
COVID-19 signage that is too small or confusing	3.3%
Issues using classroom technology (e.g. mic, wi-fi, camera)	4.1%
Issues with Victory sprayer (e.g. how to operate, leaks, ran out of spray)	0.8%



K-State COVID-19 Compliance Survey Results - Comments

February 7-10, 2021 – 241 Responses

1a. Further comments about face covering compliance inside buildings and classrooms

I spend nearly all of my time in one building and everyone in that building is very diligent about wearing masks to keep everyone safe.

Hale Lib - many students without mask and not following social distancing

However I have seen few people inside. Eisenhower Hall has been very deserted lately with all classes online.

people in their offices ,and a subordinate or coworker come in and they both do'nt have their masks on

Faculty and staff seem to be doing a better job of masking inside on a regular basis than students. Some students will wear their masks below or around their chins or carry them into the building and then pull the mask up/put it on once they are a ways inside.

Strictly followed by staff, students and faculty, visitors need more strict instructions on the mask policy

I work in Hale Library. Students come in with face masks on, but when we walk around our spaces, we notice that many of them are not wearing masks, especially those that occupy our group study rooms. We remind them to put their mask on and they do, but then when we do our next patrol, we notice that many of them have resumed not wearing their masks. We have several contractors in Hale Library as well as several individuals employed by Hutton construction. A significant percent of these (about 50%) do not wear masks or do not wear them properly (i.e, they only cover their mouth, not their nose).

Not all wear them correctly. Some people have their noses exposed.

Not seeing the faces of my students in class saddens me deeply. Is anyone measuring the psychological impact of all of the mask wearing? But at least we are finally in class together.

In the business building, after 5PM, easily 50% of students in chairs/study rooms are not wearing masks or not wearing masks correctly (nose exposed)

I was briefly on campus once these past few weeks. I saw one person in a mask and another without.

Pretty great compliance inside the veterinary hospital. At this point, it's expected from and by everyone. You get looked at weird if you aren't wearing one, and people generally try to avoid being near you.

From my observations, most people now have the hang of wearing masks.

About 30% of face mask don't cover the individuals nose.

Central Mail workers are regularly not wearing masks

At Hale Library, we continue to see some students without masks or masks worn below the nose. When pointed out, most students comply but some take the masks back off as soon as one walks away.

There is still no enforcement of this rule, indicating no desire from top University administrators to enforce or protect.

it should be maintain as mandatory. Also, a high percentage of people on campus do not use the mask or face covering correctly. It should be enforce.

There are employees in high contact areas who don't wear masks even when others enter or wear masks around each other in a shared space. It's disrespectful and is an unnecessary risk to those entering, including visitors to campus, co-workers and delivery personnel but it's allowed by the supervisors.

Mainly only off when working alone, but everyone typically masks when someone walks in.

Construction workers in Hale Library very rarely wear their masks correctly if at all. Students in glass study rooms are supposed to keep their masks on while inside. Many do not.

Don't see students wearing masks when walking on campus

It has been problematic in Hale Library, especially with Greek organizations.

Hale Library construction crew are lax in wearing masks inside the library

get rid of masks

Custodians not wearing masks

I work in a small two person office. The person I share the office with (my direct supervisor) only puts on a mask when someone enters the office (I or a colleague). This means I enter my office space to work for hours after my co-worker has been exhaling in this space for hours with no mask on. There are no windows or ventilation. All I can do is open the door, but we are not in a corridor where air is actively moving through. Our desks may not be even 6 ft apart. I have told my supervisor the virus can be lingering in the air from when he was exhaling while maskless, and putting a mask on only when I enter will not change that fact. We work in the Rabies Lab, therefore are familiar with viruses.

Very pleased with the compliance.

very limited staff working in office, the rest are still working from home.

I work at Lafene. All students are screened at the front entrance for mask compliance.

Did see two students not wearing face mask last Thursday evening in Engineering hall

Hale Library first floor has been doing pretty well, some students are still removing masks in the study rooms.

People are getting very relaxed. I have been in multiple offices where masks are not being worn and in the hallways masks are not always being worn correctly.

none

My primary reference is in the dining centers. It appears that compliance is 100%.

More on make sure you clean your hands and wash what you touch

From what I have seen most are wearing face coverings inside.

Unless they are locked in their office alone or behind a shield or have 6+ feet between them and other people

A few don't cover their nose.

If people have private offices with a door to close, they haven't been wearing masks while working. However, when leaving their office or if someone approaches, masking occurs as needed.

I notice Students take them off if socially distanced or possibly forget to put them back on.

I don't usually come in contact with many people as we are currently trying to move into a new office and spend most of my office time working from home.

At what point are we going to tell people that if they have been vaccinated or have been infected and have antibodies, that they need not wear a mask? Let us start the return to normal.

Most people wear face masks, but when students are studying by themselves in our building, I see many not wearing masks at all.

People in my building wear masks except when alone in rooms with closed doors

Mask culture is well established in our Univ area

I am a faculty member of the Hale library. Currently Hale is the final phases of being rebuilt/remodeled. The construction and contract workers are not very compliant with covering their faces. If I only count K-State employees it is greater than 95%.

Compliance at the rec is very spotty. facemasks on but not covering noses, sometimes around neck when students are talking, wiping down weight machines is very inconsistent

I have been on campus two times in the last two weeks, each time for a meeting lasting less than 2 hours. Within that brief window of time, everyone I encountered was wearing a mask.

The only people I've noticed without face coverings were people working for contractors

None

Has not been any issues

2a. Further comments about face covering compliance outside while on campus

solid 70%, and some traveling in groups of 3-5

Most of the students I've seen take their masks off or put them on their chins outside until they get to their destination. Faculty and staff more consistently wear their masks inside and outside.

At Olathe, once you are out of the building, that's a parking lot. So mostly you don't see anyone outside the building.

I have noticed very low compliance in outdoor spaces - maybe about 50%. Students leaving the library often remove their masks as soon as they are outside.

It seems a little bit overkill to require face coverings outdoors on a nearly deserted campus.

Some are uncomfortable to wear masks.

As long as we are outside and able to social distance, this is working. I did meet three gentlemen (two in one group, one by himself) that did not have masks on nor make attempts to social distance as we passed. I had a mask on and moved away from them and all was fine.

it seems like they put on and take off the mask when they enter the buildings and some facilities people only do it when they see someone around them in the building

I occasionally see students without masks, sometimes students walking together with and without. There seems to be some confusion about the campus policy regarding when/where masks are or aren't mandated.

I observed a large group of male students playing shirts and skins football in the large open area across the street from Haymaker Hall. None of them were wearing masks.

It seems many unmasked people are community members taking walks. Maybe signs entering campus asking the community to mask up even outside would help

Why are we never given the opportunity to specify how much below 80% on these?

Most have had masks on if in a group but if no one is around, they don't have their masks on outside as they're socially distanced in fresh air as is permitted in the mask policy. Perhaps the question should be altered to ask if they're following the guidelines outside on campus when not socially distanced.

Those not wearing a mask are usually alone outside.

This morning is the first day I've been on-campus since November and I have not seen any students yet.

In groups of students, a few wear masks.

See above

Very little compliance outside

There have not been many people on campus in recent weeks, but of the few I saw, most were not wearing masks while walking outside on campus.

I don't feel the face coverings are necessary while outside, unless in or around a group of people. This campus has few enough students it usually isn't an issue.

The only people I've seen on campus without masks have all been at least 6 feet away for other people

it is absolutely stupid that people are wearing masks outside

I did not observe anyone not wearing a mask if they were in a group on campus.

I am at Research Park Circle, we only see or interact with people inside.

This question needs to be adjusted to reflect people walking alone on campus and people in groups on campus. I have seen a much higher percentage of people masking in groups on campus, which is appropriate.

Have seen several groups of students this past week walking on campus/on Anderson Ave with no masks visible.

I wish there was a N/A option for this. I don't walk on the main campus

Many students appear did not wear face covering and were walking in groups on campus

Of the people not wearing masks outside are students.

none

Those individuals who were not wearing a mask outside were not within close proximity to anyone else. I believe this question should be modified to include "within 6' of others". Current policy does not require face masks at all times while outside. My answer reflects compliance outside "within 6' of others"

There aren't a lot of people around campus, but I would say probably only half the people I see outside have face coverings on.

They are outside and usually social distanced. Outside is when people get a chance to breath oxygen instead of their exhale. Masks are stupid and haven't stopped the spread, and anyone that puts any credit into what Dr. Fauci is a fool.

Most often I see not wearing of the mask on Mid-Campus Drive while walking between Claflin and Jardine. This just happens to be a common route for me thru campus and where I have noticed it. But I haven't seen any issues when people are in main corridors of campus such as near Union, Waters/Hale or near residence halls.

I've seen an increased number of people without face coverings outside while on campus in recent weeks. It seems to mostly be people who are there to exercise (ie, running, walking dogs, etc)

While I haven't come in contact with many people, those who I see are wearing their masks.

If you are not near people then wearing a mask is unnecessary - in open spaces, in cars etc. Mask are inhibiting normal activities and social interactions. Also if people have been vaccinated or have been infected and have antibodies, they do need not wear a mask? Let us start the return to normal.

A majority of students I see outside have removed their masks as soon as they step outside.

Many people don't wear masks outside.

I have been on campus two times in the last two weeks, each time for a meeting lasting less than 2 hours. Within that brief window of time, everyone I encountered was wearing a mask. I walked to campus from home and noticed that people wore their masks outside, and even people who were technically off campus, but in close proximity to

campus were also wearing masks.

It's been possible to stay more than 6 feet apart

None

3a. Further comments about 6-foot social distancing compliance

I am not in a position to observe compliance in classrooms

As usual, some people will follow this better than others.

We have posted signs on our group study rooms to inform students of the reduced occupancy limits. And we have removed chairs from those rooms so that there are only enough chairs for the maximum number of occupants. However, students frequently pull in extra chairs and exceed the occupancy limits. Outdoors students often walk in tight groups. K-State tour groups almost always violate the 6' distancing guidance.

It isn't very hard to keep your distance when there is barely anyone here.

Pretty compliant. In my experience, people try their best to distance in any given situation.

Honestly, the hallways and stairwells in older buildings don't really allow for this type of spacing if you are passing someone but folks are making honest attempts to comply.

People don't have an easy way to avoid each other indoors. Many don't even try given the complexity of it. People outside walk together with a feeling that the open air will reduce chances, so mostly only disassociated groups pass at a distance.

Inside offices is when there seems to be less compliance.

There are classrooms that do not meet this standard in Ackert Hall that have been approved for use by the University.

The colder weather has facilitated mask wearing outside. I'm glad to see it.

With so few people around, the most I've seen is people passing each other quickly in such spaces.

I like the idea of staff coming into work on schedules- Not all staff on the same schedule - M-F

everything needs to go back to normal

It is impossible in a teaching lab to stay 6 feet apart.

If everyone is wearing a mask, maintaining 6 ft distance between people does not appear to be a priority. It seems there is less care now than when the pandemic first started.

Again, groups of six or more students walking together.

Have seen many tours where they are not 6 ft apart

none

Remember were you are

Nearly everyone seems to be doing okay with this.

If people are roommates, then social distancing anywhere isn't going to matter.

When seeing people walk outside, there are some walking close together that I presume are roommates, friends, couples, family, etc that are walking close together.

Technically the requirement is 6ft spacing for less than 10 minutes. Where are the scientific data to support this? We seem to follow CDC recommendations/demands without questioning them.

Students will gather at vehicles to talk

Our daily teaching activities call for close interactions with students. Although all are masked, the 6-ft distancing and listed covid capacity for rooms are routinely violated. There is very little consideration given to covid capacities of rooms due to the need to continue student teaching.

none.

None

4a. Further comments on what has gone well regarding COVID-19 protocols and compliance

It's a major problem compared to last semester

I was working in my office and crossed campus a few times to check mail or to get food in the cafeteria. In person classes begin this week so I will be able to answer more questions in this section in the next survey.

Signage seems to be good enough now.

The response and support of the wildcats (students, staff, faculty) have been remarkable.

Signs abound and strong efforts have been made to encourage social distancing by de-densifying indoor spaces. The COVID-19 website has a wealth of information. The frequent updates via K-State Today have also helped.

The web site and town hall meetings have been very informative

Everyone follows the rules.

I feel like the community has adjusted extremely well. By now, most of the COVID compliance stuff is just habit. I think the mentality has shifted away from everybody focusing on how they're being personally inconvenienced, and more towards "we're all going through this together." It really makes it a lot more bearable to not have to hear people complaining about masks and stuff constantly anymore. Sometimes I even forget I'm wearing my mask.

I appreciate the ongoing and open communication about what we should be doing.

Not clear to many faculty what the policy is on outside visitors like service representatives. Do they need to quarantine dependent on where they are coming from? Do they need to have a negative test before coming to KSU? I'm very grateful that the Olathe campus has been taking COVID seriously and allowing those who can work from home to do so.

The updates in the forum are great!

For most of us, masks are a non-issue and it's easy to comply because it's for the good of all.

I was glad to see the first 2 weeks going online. I am interested to see how the next 2 weeks go.

Signs that clearly specify how many people can be in a room at once.

We have plenty of sanitizing stations and accessibility to wipes etc. I feel much better about the cleanliness of our spaces.

no comment

None

Facilities should be congratulated for getting signage up in so many places and University Printing should be congratulated for getting it all printed and working with designers on all the different types and sizes of signage

Signs posted and students complying with policies.

It seems to have gone pretty well at Polytechnic. I have not come across any issues regarding the COVID-19 rules.

It has gone well with respect to people following the rules and provision of information and resources.

Hand sanitizer is readily available and campus is less dense

I believe everyone has become used to wearing masks and it's become a lifestyle that we're just used to at this point.

It is difficult to judge what has gone well regarding campus overall because 95% of my work time is at home. When I come to campus I feel comfortable and feel that the rules and policies are clear.

na

Gone fine on protocols.

4b. Further comments on what has not gone well regarding COVID-19 protocols and compliance

Students are now refusing to social distance and more refuse to wear their masks

Some people are not masking outdoors (even around others), so they may be unclear on what the policy is on campus.

None to my knowledge, I guess all efforts have had some good impact.

In the library setting we do not know who the patrons are. This makes it difficult for us to enforce policies. We find that students tend to put masks on when they see someone coming, but many of them immediately take them off when they don't think anyone is looking. We lack the authority to enforce the policy - there truly is no recourse for us. We called the police recently after we had persistent problems with a pledge class from a fraternity. The police officer who came expressed displeasure at having been called. He didn't kick any of the people out, which makes sense given the fact that he would have had to rely on our hearsay. If we are serious about enforcing the policy, we need campus police to do regular patrols and to record names of violators so a list of repeated violators can be made and some consequences can be attached to their violations.

I have a really hard time hearing my students when they are speaking through masks. I become short of breath after a time when speaking through my mask because I feel I must increase the volume to be heard.

Students are getting mask fatigue. Administration seems to not want to rock the boat and attach consequences to students non-compliance.

Trying to restrict stairwell use. Nobody follows the signs, including me. It's extremely inconvenient to go so far out of your way to find an "UP" or a "DOWN" staircase. And you're generally only near people in the stairwell for a couple of seconds, max. Seems unnecessary.

With what feels like constantly changing guidelines, it is still difficult to know exactly what to tell employees who may have been a contact with someone positive but are not contacted by the health department as a close contact. This has been true even for people in the same household. As an employer, what are we legally responsible for doing or not doing.

Signage is becoming routine and thus ignored.

I'd say that officially the administrators in our department are following guidelines, but the unspoken message is that we need to be on campus, attending meetings face-to-face, etc. rather than working from home and/or via Zoom. The message from upper administration (president & provost) doesn't match the unspoken message we receive in our department. There have been promotions awarded based on who is here in person and who is not. Again, that has not been officially stated but many of us feel it's pretty clear that is exactly what has happened. As well, without total buy-in those faculty who supervise students outside the classroom (ie competition teams) don't enforce the mask policy very well. Those students run all over the building while practicing for their competitions this spring with masks hanging down below their chins. They congregate together in areas of the building and none of them will be wearing masks.

Have concerns regarding study spaces. Who makes sure these spaces are disinfected after use? I have seen students in them not wearing masks.

The lack of institutional effort to enforce social distancing or protect faculty and staff.

Wearing correctly face coverings should be enforce.

the leadership decisions in regards to COVID protocol are not aligned from the university-wide leadership to the department leadership and that is another factor in the every decreasing campus morale in those caught between the differing messaging.

Had a less than supportive police officer when called about issues with mask compliance after several efforts to enforce.

Not sure if it is a county thing or university thing, but I thought it was helpful when clusters of COVID-19 outbreaks were reported. I am aware the data often lagged. Maybe there have not been any clusters so far since the first of the year.

bathrooms are small, when several people in the same space.

campus should be back to 100% by now. This virus is no where near as deadly as was predicted but nothing has changed to accommodate how minor the virus is. There is no information on staying healthy aide from washing hands. Wearing masks should not be mandatory for those that are not afraid of the virus.

Eating drinking no social distance

For some reason, personal office space at Research Park Circle does not have signage stating how many people can be in a space, nor is there signage that states masks are required in any shared space (even if you are the only person in that space for a few hours). People are removing their masks for long periods of time, exhaling into the space freely, and then only putting on the mask after others enter the space to work.

Again, student compliance outside of the buildings - since I work in Unger I can't respond on other than the few cases I've seen of groups of people walking outside of the buildings, immediately outside of campus (on Anderson Ave).

Official group or student parent tours not adhering to 6ft distancing. A lot of the auto hand sanitizers either not working or out of sanitizer.

Every department is doing their own thing. Mine is pretty much requiring us to be here but the departments we need to work with aren't here, don't forward their phone and take 5 days to respond to emails.

no comment

COVID Fatigue showing, especially related to off campus social gatherings.

None

Anything that has required faculty, staff, and students to use their brains.

None.

The measures are not conducive to effective interactions between people (faculty-students etc). This is not helping with enrollment issues.

I would like the campus dashboard to include data from last semester as well. With only a couple of weeks' data, it's hard to see patterns and compare the beginning of this semester with last semester in terms of COVID isolations and quarantines.

Being mandated to wear masks while outside when counties do not mandate this.

No further comments

Office space for graduate students is a problem. Many graduate students and other lab workers don't have a desk that's far from other people and they do need to sit at their desks occasionally while working in the lab

na

Nothing with protocols -

5a. Further comments on any other specific issues you've experienced regarding COVID-19 protocols and compliance

First time using the system and wasn't aware master control manual would shut down. Once I was aware of this feature, then I was able to take care of the matter.

Too many people in weekly meetings lasting over 1 hour. Unable to maintain 6 feet distance during this time. Management prefers these meetings be attended in person, instead of via zoom.

K-State needs to improve

N/A

Trying to maintain 6-foot distance in the breakrooms can be challenging at times.

Access to water is really difficult! Bringing bottled water is awkward and difficult!

Why can't water bottles be filled at fountains?

Sanitizing stations in some areas run out frequently, and it's not clear who refills them. Custodians have said it's not them.

Some non-compliance has been by outside contractors/vendors on campus who wear masks incorrectly or only put on when a campus person approaches.

we have a mandatory face mask policy on campus but half of the people on campus do not wear the mask properly... so what is the point?

We may need more signs that say "The mask goes OVER your nose."

We need more bottle-filling stations for water.

The protocols are too general, and not clear enough that any space that more than one person uses requires mask compliance at all times, even when someone is alone for a period.

noses hanging out above masks

Signage needs to be replaced

none

None

I have observed no problems regarding this question

Visitors to campus may still not cover their nose while masking more than I think it is employees of KSU

Those who forgot to put on their masks due to inattention, quickly remembered to mask-up before entering the building. Any issues with wearing masks seems to be related more to forgetting where they are or that they had forgotten to keep it handy when on campus.

Last semester I had over a third of my class in quarantine at one point, with letters from student life. The numbers on the K-State Covid page don't seem to quite match up on this.

Flight labs are difficult to maintain 6' distance while instructing a student.

No further comments.

na

WE HAVE TO GET BACK IN PERSON CLASSES. We have things in place to be safe for faculty and students.
