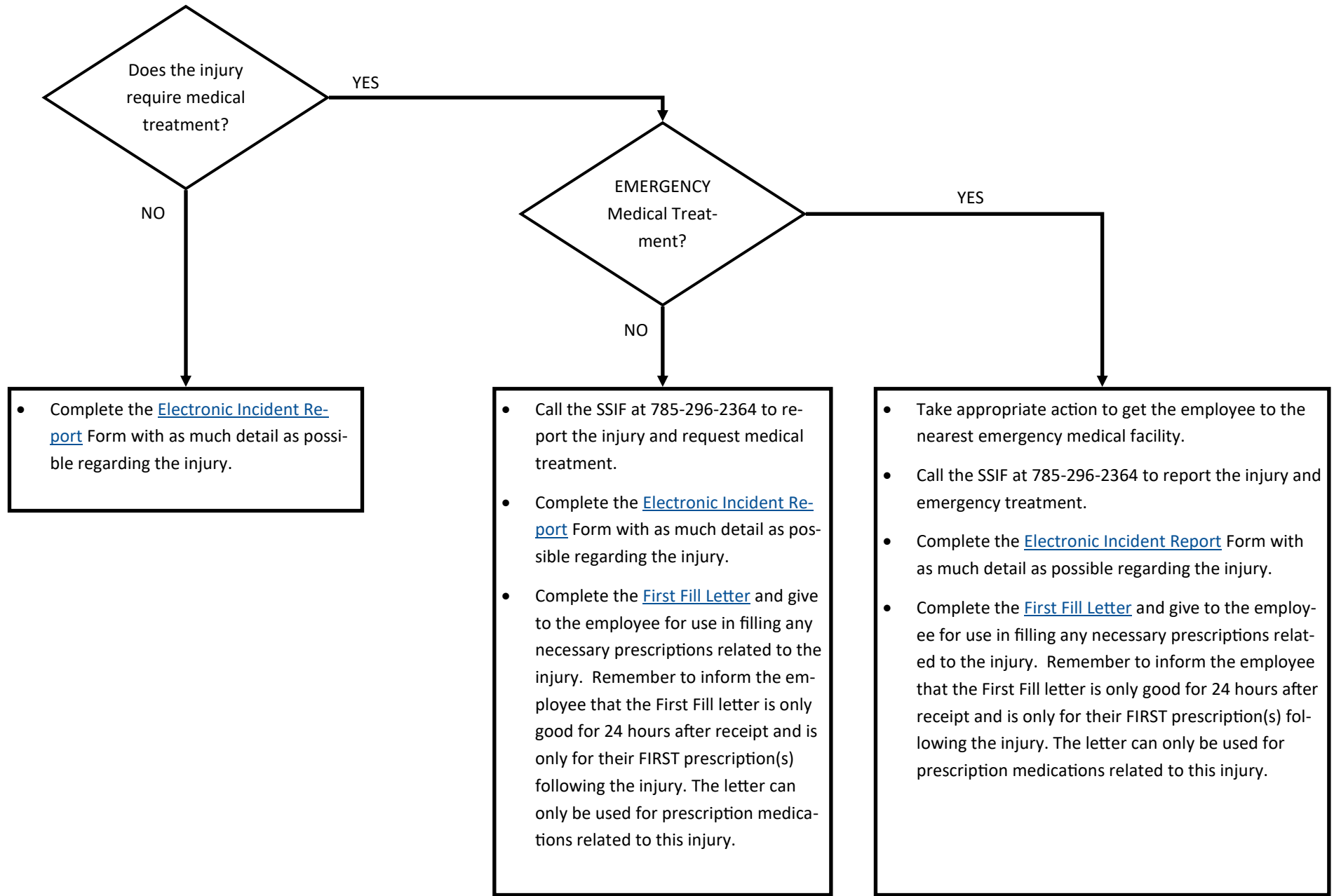


WHAT TO DO WHEN AN EMPLOYEE IS INJURED AT WORK (For HCS Liaisons and Supervisors)



In all cases the State Self Insurance Fund (SSIF) will make the final determination of whether or not the injury is compensable under workers compensation. If the injury is found to be non-compensable, the employee will be responsible for submitting any bills related to the denied claim to his or her health plan provider.