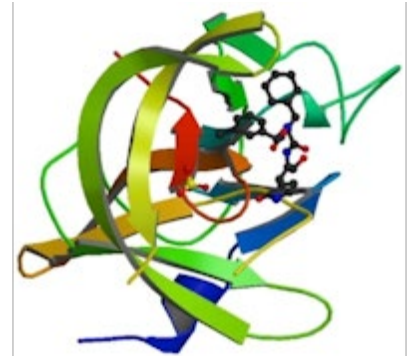


Center for Antiviral Drug Discovery and Development

Problem/Issue Statement

The rapid emergence of SARS-CoV-2 exposed the global shortcomings of pandemic preparedness and response. Drug discovery programs require years to validate targeted molecules and optimize potential regimens for clinical trials. Consequently, if drug discovery and development start after a pandemic begins, it is unlikely medications will be available for timely clinical impact.

Collaborating scientists from Kansas State University, Wichita State University and the University of Iowa, have established the Center for Antiviral Drug Discovery and Development to advance novel, structure-based drug design and development research. While the expertise and innovation for break-through discovery exists among this team, current facilities do not meet the challenge of contemporary drug discovery and development.



**Inhibitor bound to ribbon
diagram of SARS-CoV-2
3C-like protease**

Request Description

A physical home and requisite infrastructure are needed to support the Center for Antiviral Drug Discovery and Development. An annex to Coles Hall will be sized to accommodate current Center needs and future expansion. The annex will include open-module molecular biology and virology BSL-2 research laboratories, laboratory support rooms, offices and conference and meeting spaces. A 30,000 gross square feet annex for \$25.6M is planned with a bridge connecting to Coles Hall at the 2nd floor.

Request Goals and Expected Outcomes

The collective goals of the Center for Antiviral Drug Discovery and Development will focus on current COVID-19 antiviral therapeutics, future epidemic and pandemic coronavirus threats, and emerging enterovirus infections such as EV-D68 that presents as severe respiratory illness in children with neurological polio-like complications.

Appropriations Subcommittee

Labor, Health and Human Services, Education, and Related Agencies

Request Type

Funding Request ☒

Bill Language Request ☐

