



Faculty Senate Open Forum

April 17, 2025

Welcome to the forum

Agenda

- Goals for the day: Transparency, inform, trends, resource trail, return on investment - "Productive dialogue"
- Administrative and college full-time employees' review
 - Description of the data (3-year trend and beyond) - Zecha
 - Focused review
 - Office of the President – Linton
 - Office of the Executive Vice President for External Engagement and Chief of Staff – Stewart
 - Office of the Vice President for Administration and Finance – Erickson
 - Office of the Vice President for Research - Coetzee
 - Office of the Provost and Executive Vice President - Mendez
- Q&A

Data sourcing and definitions

- **Data source:** Database Task Force (DBTF) report used for Integrated Postsecondary Education Data System and Kansas Board of Regents reporting
 - Source: Office of Data, Assessment, and Institutional Research; Human Resource Information System
 - Active employees on the payroll as of Nov. 1 each year
 - Full-time employee (FTE) vs. headcount: Utilized FTE to normalize varying employee structures

**Does not include Graduate Teaching Assistants, Graduate Research Assistants, Graduate Assistants or student data*

Employee Categories

| Faculty |
|--|
| <ul style="list-style-type: none"> • Professors Research, clinical teaching and extension • Assistant/associate professors Research, clinical teaching and extension • Senior professors of practice • Professors of practice • Senior/advanced instructors |

| Staff |
|--|
| <ul style="list-style-type: none"> • All remaining unclassified professionals • All remaining university support staff |

| Leadership |
|--|
| <ul style="list-style-type: none"> • President • Provost • Deans • Vice presidents • Vice provosts • Assistant/associate deans • Assistant/associate vice presidents • Assistant/associate vice provosts • Chief administrators |

Requested university data sets

Summary

Reasons for change

- Restructure
- Filled vacancy
- Establishing a new office/role
- Additional staff needs

Funding the changes

- Department realignment of funds
- Budgeted vacancy
- University budget realignment
- Bond retirement fund
- Special state appropriation
- Foundation Fund
- One K-State Fund
- Unit fees
- Cash reserves

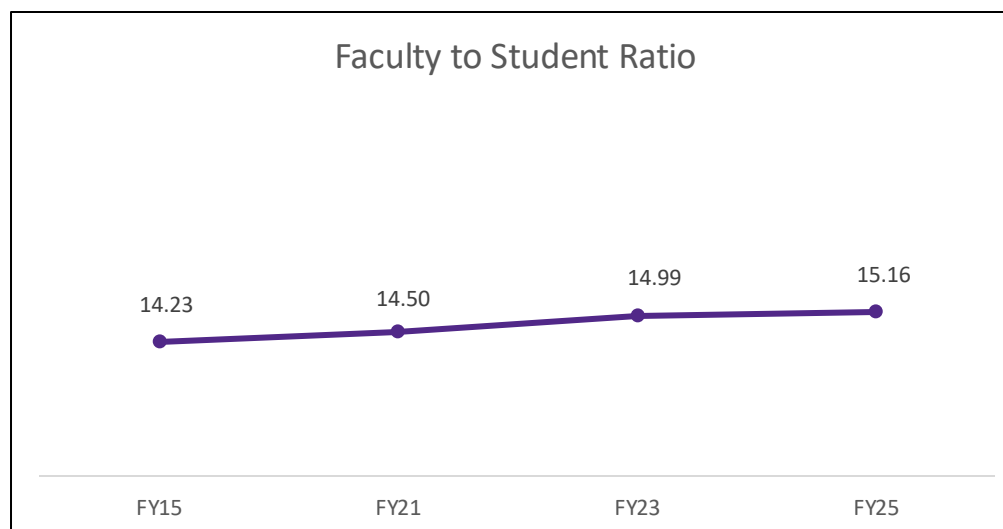
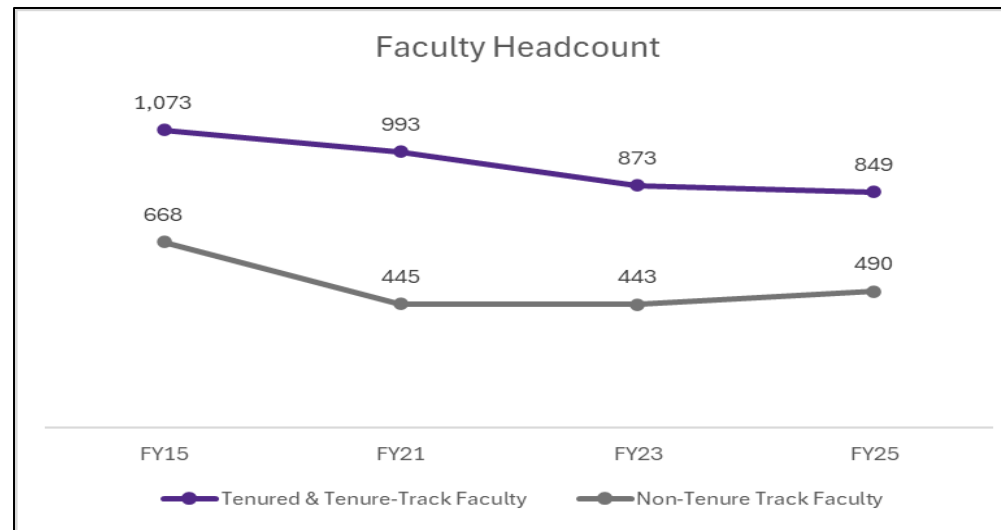
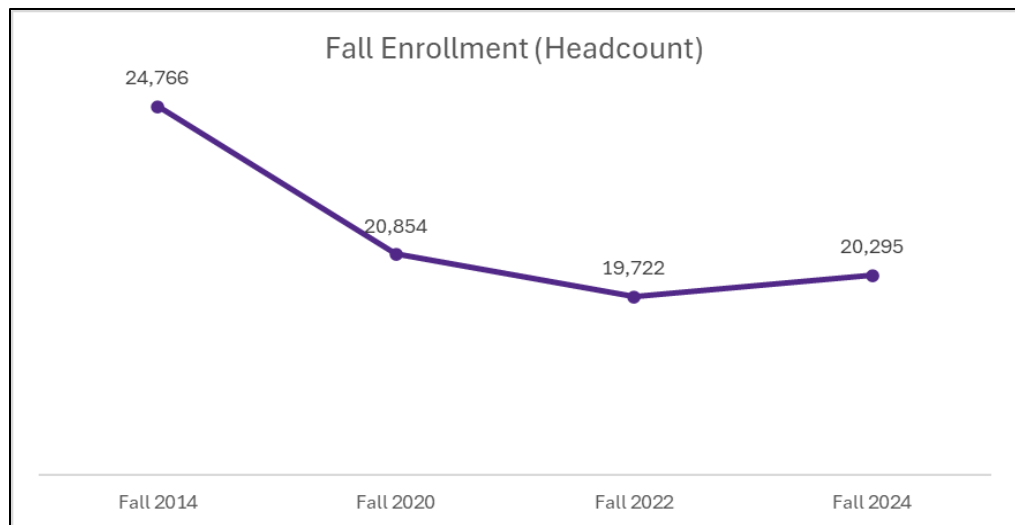
| Requested Units FTE - President, Provost, EVP, VPAF*, VPR | | | |
|--|--------------|--------------|-----------------|
| | FY23 | FY25 | # Change |
| Leadership | 24.0 | 26.0 | 2.0 |
| Faculty | 6.8 | 7.0 | 0.2 |
| Staff | 440.8 | 473.0 | 32.2 |
| Grand Total | 471.6 | 506.0 | 34.4 |

**Information Technology is included in VPAF numbers and will be discussed later in the presentation.*

Questions that we have received

- How are we investing in the university's academic, research and engagement missions?
 - People, programs and facilities
- How has staffing changed in administrative offices and colleges?
 - Leadership, faculty and staff
- Where are the resources coming from to make these changes and investments?
 - Realignment, vacancies and special state appropriations

Universitywide data



Universitywide full-time employees

| | 10 yr | COVID | Requested | | 3 yr Δ | 10 yr Δ |
|---------------------------|---------------|---------------|---------------|---------------|------------|--------------|
| | FY15 | FY21 | FY23 | FY25 | # FTE | # FTE |
| Student enrollment | 24,766 | 20,854 | 19,722 | 20,295 | | |
| Central FTE | 1,740 | 1,532 | 1,370 | 1,513 | 143 | (227) |
| Leadership | 53 | 47 | 41 | 53 | 12 | 0 |
| Faculty | 143 | 49 | 40 | 45 | 5 | (98) |
| Staff | 1,544 | 1,436 | 1,289 | 1,415 | 126 | (129) |
| Colleges FTE | 3,253 | 3,262 | 3,131 | 3,338 | 207 | 85 |
| Leadership | 41 | 41 | 43 | 49 | 6 | 8 |
| Faculty | 1,598 | 1,389 | 1,276 | 1,295 | 19 | (303) |
| Staff | 1,614 | 1,832 | 1,812 | 1,994 | 182 | 380 |
| Grand Total | 4,993 | 4,794 | 4,501 | 4,851 | 350 | (142) |

Universitywide full-time employees

| | 10 yr | COVID | Requested | | 3 yr Δ | 10 yr Δ |
|---------------------------|---------------|---------------|---------------|---------------|------------|--------------|
| | FY15 | FY21 | FY23 | FY25 | # FTE | # FTE |
| Student enrollment | 24,766 | 20,854 | 19,722 | 20,295 | | |
| Central FTE | 1,740 | 1,532 | 1,370 | 1,513 | 143 | (227) |
| Leadership | 53 | 47 | 41 | 53 | 12 | 0 |
| Faculty | 143 | 49 | 40 | 45 | 5 | (98) |
| Staff | 1,544 | 1,436 | 1,289 | 1,415 | 126 | (129) |
| Colleges FTE | 3,253 | 3,262 | 3,131 | 3,338 | 207 | 85 |
| Leadership | 41 | 41 | 43 | 49 | 6 | 8 |
| Faculty | 1,598 | 1,389 | 1,276 | 1,295 | 19 | (303) |
| Staff | 1,614 | 1,832 | 1,812 | 1,994 | 182 | 380 |
| Grand Total | 4,993 | 4,794 | 4,501 | 4,851 | 350 | (142) |

Universitywide full-time employees

| | 10 yr | COVID | Requested | | 3 yr Δ | 10 yr Δ |
|---------------------------|---------------|---------------|---------------|---------------|------------|--------------|
| | FY15 | FY21 | FY23 | FY25 | # FTE | # FTE |
| Student enrollment | 24,766 | 20,854 | 19,722 | 20,295 | | |
| Central FTE | 1,740 | 1,532 | 1,370 | 1,513 | 143 | (227) |
| Leadership | 53 | 47 | 41 | 53 | 12 | 0 |
| Faculty | 143 | 49 | 40 | 45 | 5 | (98) |
| Staff | 1,544 | 1,436 | 1,289 | 1,415 | 126 | (129) |
| Colleges FTE | 3,253 | 3,262 | 3,131 | 3,338 | 207 | 85 |
| Leadership | 41 | 41 | 43 | 49 | 6 | 8 |
| Faculty | 1,598 | 1,389 | 1,276 | 1,295 | 19 | (303) |
| Staff | 1,614 | 1,832 | 1,812 | 1,994 | 182 | 380 |
| Grand Total | 4,993 | 4,794 | 4,501 | 4,851 | 350 | (142) |

Universitywide full-time employees

| | 10 yr | COVID | Requested | | 3 yr Δ | 10 yr Δ |
|---------------------------|---------------|---------------|---------------|---------------|------------|--------------|
| | FY15 | FY21 | FY23 | FY25 | # FTE | # FTE |
| Student enrollment | 24,766 | 20,854 | 19,722 | 20,295 | | |
| Central FTE | 1,740 | 1,532 | 1,370 | 1,513 | 143 | (227) |
| Leadership | 53 | 47 | 41 | 53 | 12 | 0 |
| Faculty | 143 | 49 | 40 | 45 | 5 | (98) |
| Staff | 1,544 | 1,436 | 1,289 | 1,415 | 126 | (129) |
| Colleges FTE | 3,253 | 3,262 | 3,131 | 3,338 | 207 | 85 |
| Leadership | 41 | 41 | 43 | 49 | 6 | 8 |
| Faculty | 1,598 | 1,389 | 1,276 | 1,295 | 19 | (303) |
| Staff | 1,614 | 1,832 | 1,812 | 1,994 | 182 | 380 |
| Grand Total | 4,993 | 4,794 | 4,501 | 4,851 | 350 | (142) |

Universitywide full-time employees

| | 10 yr | COVID | Requested | | 3 yr Δ | 10 yr Δ |
|---------------------------|---------------|--------------|--------------|---------------|------------|--------------|
| | FY15 | FY21 | FY23 | FY25 | # FTE | # FTE |
| Student enrollment | 24,766 | 20,854 | 19,722 | 20,295 | | |
| Central FTE | 1,740 | 1,532 | 1,370 | 1,513 | 143 | (227) |
| Leadership | 53 | 47 | 41 | 53 | 12 | 0 |
| Faculty | 143 | 49 | 40 | 45 | 5 | (98) |
| Staff | 1,544 | 1,436 | 1,289 | 1,415 | 126 | (129) |
| Colleges FTE | 3,253 | 3,262 | 3,131 | 3,338 | 207 | 85 |
| Leadership | 41 | 41 | 43 | 49 | 6 | 8 |
| Faculty | 1,598 | 1,389 | 1,276 | 1,295 | 19 | (303) |
| Staff | 1,614 | 1,832 | 1,812 | 1,994 | 182 | 380 |
| Grand Total | 4,993 | 4,794 | 4,501 | 4,851 | 350 | (142) |

Universitywide full-time employees

| | 10 yr | COVID | Requested | | 3 yr Δ | 10 yr Δ |
|---------------------|--------------|--------------|--------------|--------------|------------|--------------|
| | FY15 | FY21 | FY23 | FY25 | # FTE | # FTE |
| Student enrollment | 24,766 | 20,854 | 19,722 | 20,295 | | |
| Central FTE | 1,740 | 1,532 | 1,370 | 1,513 | 143 | (227) |
| Leadership | 53 | 47 | 41 | 53 | 12 | 0 |
| Faculty | 143 | 49 | 40 | 45 | 5 | (98) |
| Staff | 1,544 | 1,436 | 1,289 | 1,415 | 126 | (129) |
| Colleges FTE | 3,253 | 3,262 | 3,131 | 3,338 | 207 | 85 |
| Leadership | 41 | 41 | 43 | 49 | 6 | 8 |
| Faculty | 1,598 | 1,389 | 1,276 | 1,295 | 19 | (303) |
| Staff | 1,614 | 1,832 | 1,812 | 1,994 | 182 | 380 |
| Grand Total | 4,993 | 4,794 | 4,501 | 4,851 | 350 | (142) |

Universitywide full-time employees

| | 10 yr | COVID | Requested | | 3 yr Δ | 10 yr Δ |
|---------------------------|---------------|---------------|---------------|---------------|------------|--------------|
| | FY15 | FY21 | FY23 | FY25 | # FTE | # FTE |
| Student enrollment | 24,766 | 20,854 | 19,722 | 20,295 | | |
| Central FTE | 1,740 | 1,532 | 1,370 | 1,513 | 143 | (227) |
| Leadership | 53 | 47 | 41 | 53 | 12 | 0 |
| Faculty | 143 | 49 | 40 | 45 | 5 | (98) |
| Staff | 1,544 | 1,436 | 1,289 | 1,415 | 126 | (129) |
| Colleges FTE | 3,253 | 3,262 | 3,131 | 3,338 | 207 | 85 |
| Leadership | 41 | 41 | 43 | 49 | 6 | 8 |
| Faculty | 1,598 | 1,389 | 1,276 | 1,295 | 19 | (303) |
| Staff | 1,614 | 1,832 | 1,812 | 1,994 | 182 | 380 |
| Grand Total | 4,993 | 4,794 | 4,501 | 4,851 | 350 | (142) |

Universitywide full-time employees

| | 10 yr | COVID | Requested | | 3 yr Δ | 10 yr Δ |
|---------------------------|---------------|---------------|---------------|---------------|------------|--------------|
| | FY15 | FY21 | FY23 | FY25 | # FTE | # FTE |
| Student enrollment | 24,766 | 20,854 | 19,722 | 20,295 | | |
| Central FTE | 1,740 | 1,532 | 1,370 | 1,513 | 143 | (227) |
| Leadership | 53 | 47 | 41 | 53 | 12 | 0 |
| Faculty | 143 | 49 | 40 | 45 | 5 | (98) |
| Staff | 1,544 | 1,436 | 1,289 | 1,415 | 126 | (129) |
| Colleges FTE | 3,253 | 3,262 | 3,131 | 3,338 | 207 | 85 |
| Leadership | 41 | 41 | 43 | 49 | 6 | 8 |
| Faculty | 1,598 | 1,389 | 1,276 | 1,295 | 19 | (303) |
| Staff | 1,614 | 1,832 | 1,812 | 1,994 | 182 | 380 |
| Grand Total | 4,993 | 4,794 | 4,501 | 4,851 | 350 | (142) |

Universitywide full-time employees

| | 10 yr | COVID | Requested | | 3 yr Δ | 10 yr Δ |
|---------------------|--------------|--------------|--------------|--------------|------------|--------------|
| | FY15 | FY21 | FY23 | FY25 | # FTE | # FTE |
| Student enrollment | 24,766 | 20,854 | 19,722 | 20,295 | | |
| Central FTE | 1,740 | 1,532 | 1,370 | 1,513 | 143 | (227) |
| Leadership | 53 | 47 | 41 | 53 | 12 | 0 |
| Faculty | 143 | 49 | 40 | 45 | 5 | (98) |
| Staff | 1,544 | 1,436 | 1,289 | 1,415 | 126 | (129) |
| Colleges FTE | 3,253 | 3,262 | 3,131 | 3,338 | 207 | 85 |
| Leadership | 41 | 41 | 43 | 49 | 6 | 8 |
| Faculty | 1,598 | 1,389 | 1,276 | 1,295 | 19 | (303) |
| Staff | 1,614 | 1,832 | 1,812 | 1,994 | 182 | 380 |
| Grand Total | 4,993 | 4,794 | 4,501 | 4,851 | 350 | (142) |

Universitywide full-time employees

| | 10 yr | COVID | Requested | | 3 yr Δ | 10 yr Δ |
|---------------------------|---------------|---------------|---------------|---------------|------------|--------------|
| | FY15 | FY21 | FY23 | FY25 | # FTE | # FTE |
| Student enrollment | 24,766 | 20,854 | 19,722 | 20,295 | | |
| Central FTE | 1,740 | 1,532 | 1,370 | 1,513 | 143 | (227) |
| Leadership | 53 | 47 | 41 | 53 | 12 | 0 |
| Faculty | 143 | 49 | 40 | 45 | 5 | (98) |
| Staff | 1,544 | 1,436 | 1,289 | 1,415 | 126 | (129) |
| Colleges FTE | 3,253 | 3,262 | 3,131 | 3,338 | 207 | 85 |
| Leadership | 41 | 41 | 43 | 49 | 6 | 8 |
| Faculty | 1,598 | 1,389 | 1,276 | 1,295 | 19 | (303) |
| Staff | 1,614 | 1,832 | 1,812 | 1,994 | 182 | 380 |
| Grand Total | 4,993 | 4,794 | 4,501 | 4,851 | 350 | (142) |

Universitywide full-time employees

| | 10 yr | COVID | Requested | | 3 yr Δ | 10 yr Δ |
|---------------------------|---------------|---------------|---------------|---------------|------------|--------------|
| | FY15 | FY21 | FY23 | FY25 | # FTE | # FTE |
| Student enrollment | 24,766 | 20,854 | 19,722 | 20,295 | | |
| Central FTE | 1,740 | 1,532 | 1,370 | 1,513 | 143 | (227) |
| Leadership | 53 | 47 | 41 | 53 | 12 | 0 |
| Faculty | 143 | 49 | 40 | 45 | 5 | (98) |
| Staff | 1,544 | 1,436 | 1,289 | 1,415 | 126 | (129) |
| Colleges FTE | 3,253 | 3,262 | 3,131 | 3,338 | 207 | 85 |
| Leadership | 41 | 41 | 43 | 49 | 6 | 8 |
| Faculty | 1,598 | 1,389 | 1,276 | 1,295 | 19 | (303) |
| Staff | 1,614 | 1,832 | 1,812 | 1,994 | 182 | 380 |
| Grand Total | 4,993 | 4,794 | 4,501 | 4,851 | 350 | (142) |

Examples of new university investments – for K-State!

People

- 24 new faculty hires
- Faculty and staff raise program
- Outstanding Faculty Scholar and University Distinguished Professor retention programs

Research

- Interdisciplinary team research funding (i.e., GRIP)
 - Funded with existing university and philanthropic resources
- New state resources to pay for Biosecurity Research Institute debt
 - Reallocates \$2.2 million annually toward research support

Engagement

- K-State 105

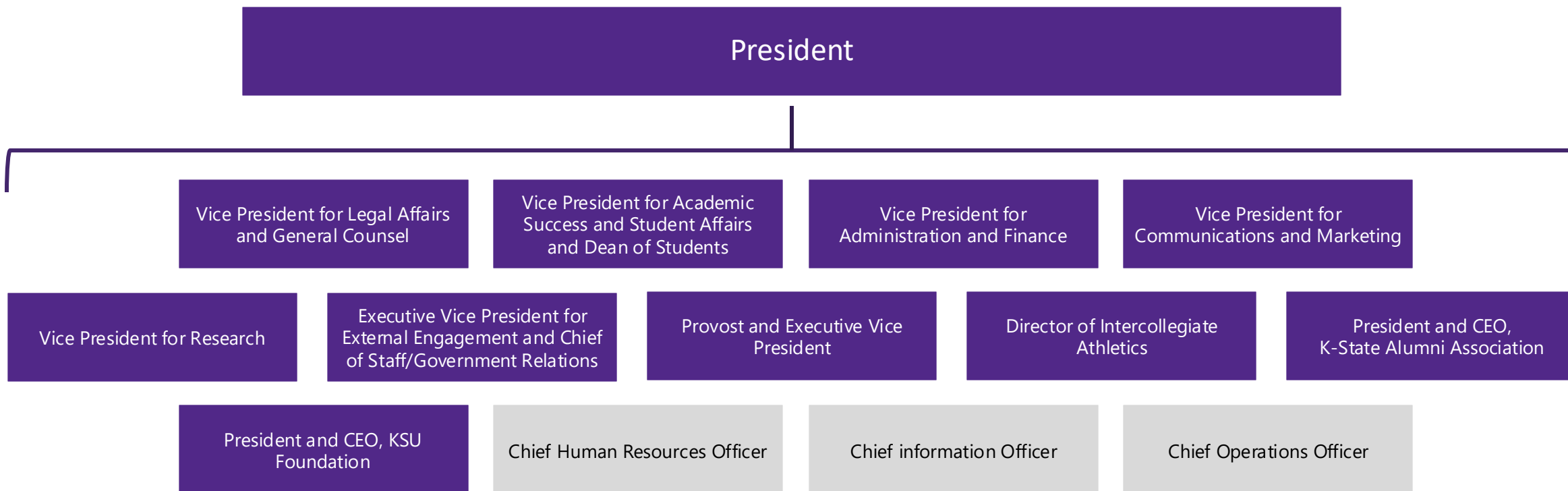
Infrastructure

- Facilities and equipment investments
 - Agriculture Innovation Initiative
 - Biomanufacturing Training and Education Initiative
 - K-Aires Center and General Atomics Innovation Ramp
 - Two new airplanes for Salina program

Success brings resources

| Next-Gen K-State Success Metrics | % Growth | Trend |
|--|----------|-------|
| Enrollment above 20,000 students for first time since 2021 | 2.8% | ↑ |
| Undergraduate enrollment | 3.6% | ↑ |
| First-time freshman enrollment, largest class since 2018 | 9.4% | ↑ |
| Pell-eligible first-year student enrollment | 27.8% | ↑ |
| First-generation student enrollment | 13% | ↑ |
| Overall student credit hours | 3% | ↑ |
| Philanthropic support | 42% | ↑ |
| Competitive research support | 24% | ↑ |

President's Cabinet Structure

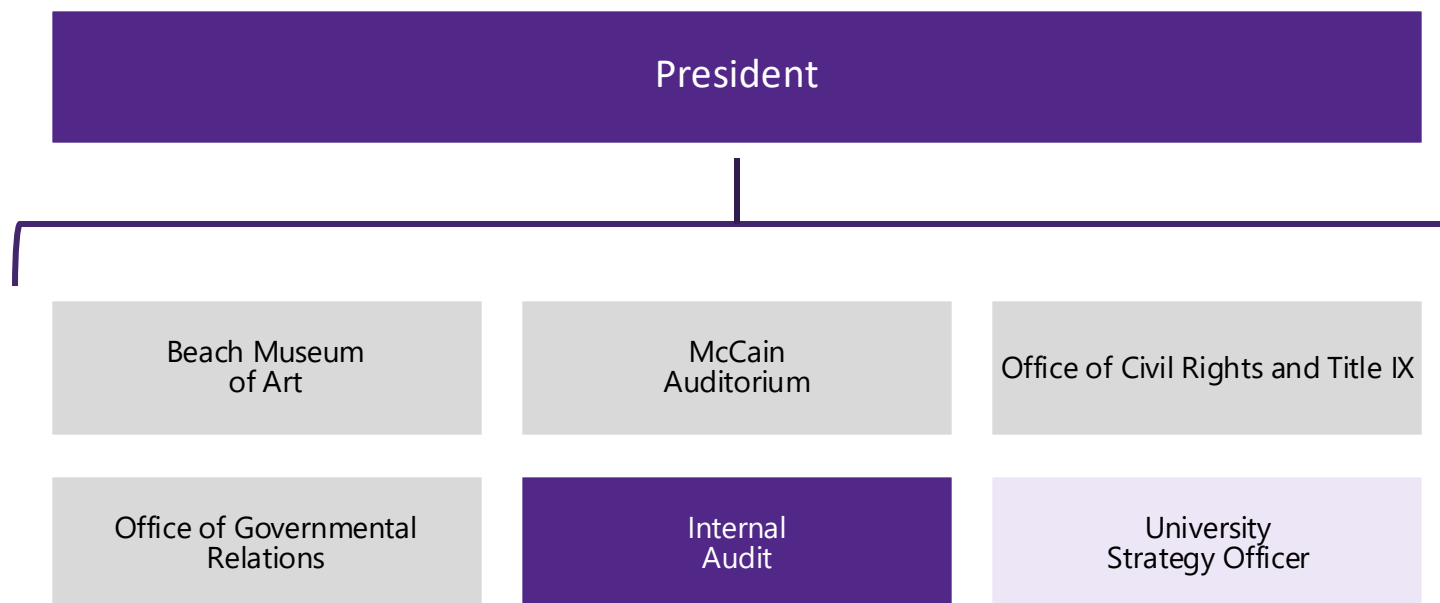


Departments
added

Departments
realigned

Departments
remained the same

Office of the President Structure



Departments added

Departments realigned

Departments remained the same

Office of the President

Full-time employee analysis

| | 2023 | 2025 | # Change | Reason | Source of Funding |
|------------|------|------|----------|---|--|
| President | 9.0 | 7.0 | -2.0 | | |
| Leadership | 3.0 | 2.0 | -1.0 | Restructure to EVP Establish Strategy Office | Dept. fund realignment Foundation - Priority Fund |
| Staff | 6.0 | 5.0 | -1.0 | Restructure to EVP | Dept. fund realignment |

Office of the Executive Vice President for External Engagement and Chief of Staff Structure

Executive Vice President for
External Engagement and Chief of Staff

Beach Museum of Art

Division of Communications
and Marketing

K-State Research and
Extension Director

McCain Auditorium

Office of Civil Rights
and Title IX

Office of Corporate
Engagement

Office of Engagement

Office of Governmental
Relations

Office of Military and Veterans
Affairs

Office of Strategic
Interdisciplinary Program
Development

Departments
added

Departments
realigned

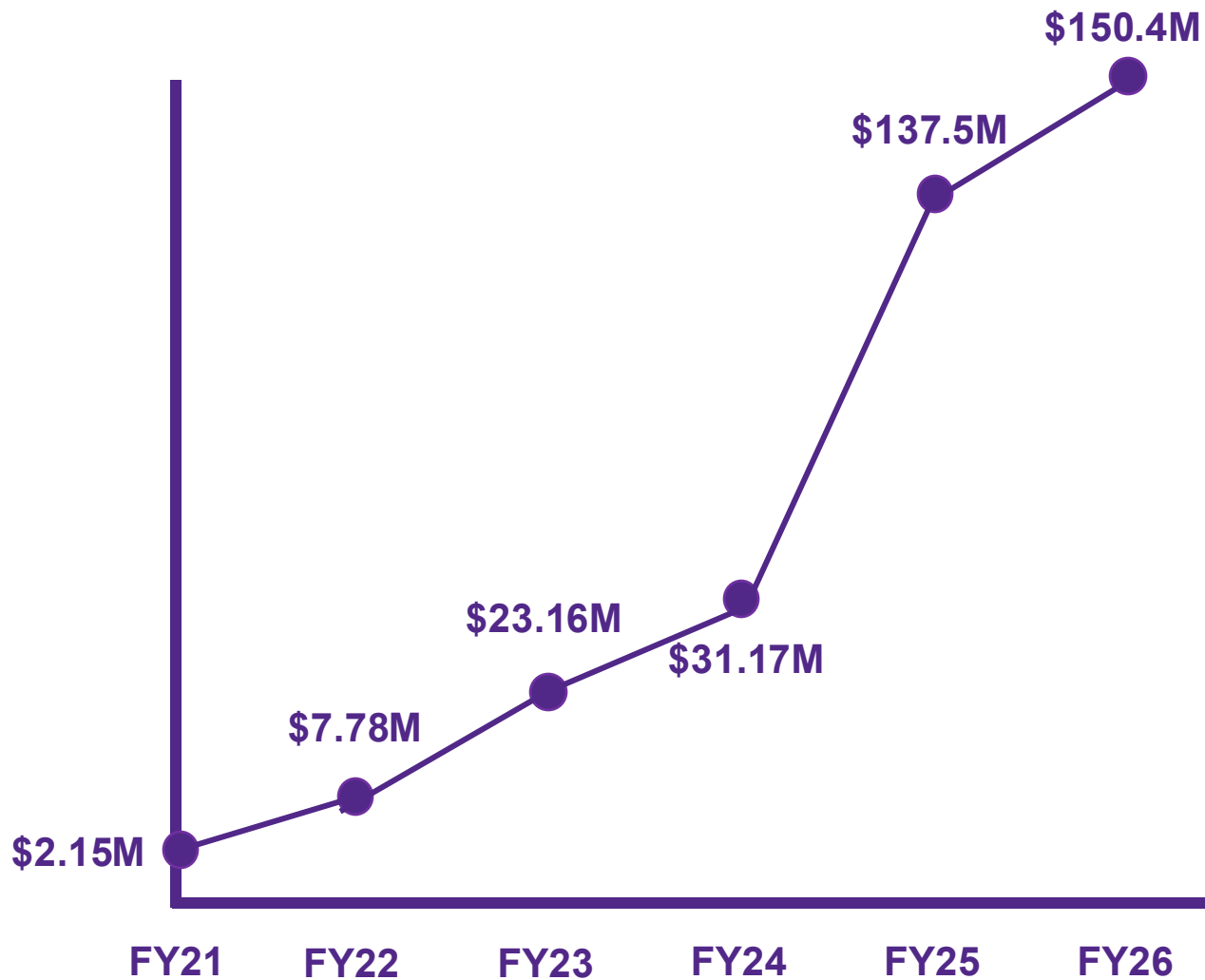
Departments
remained the same

Office of the Executive Vice President for External Engagement and Chief of Staff (EVP/COS)

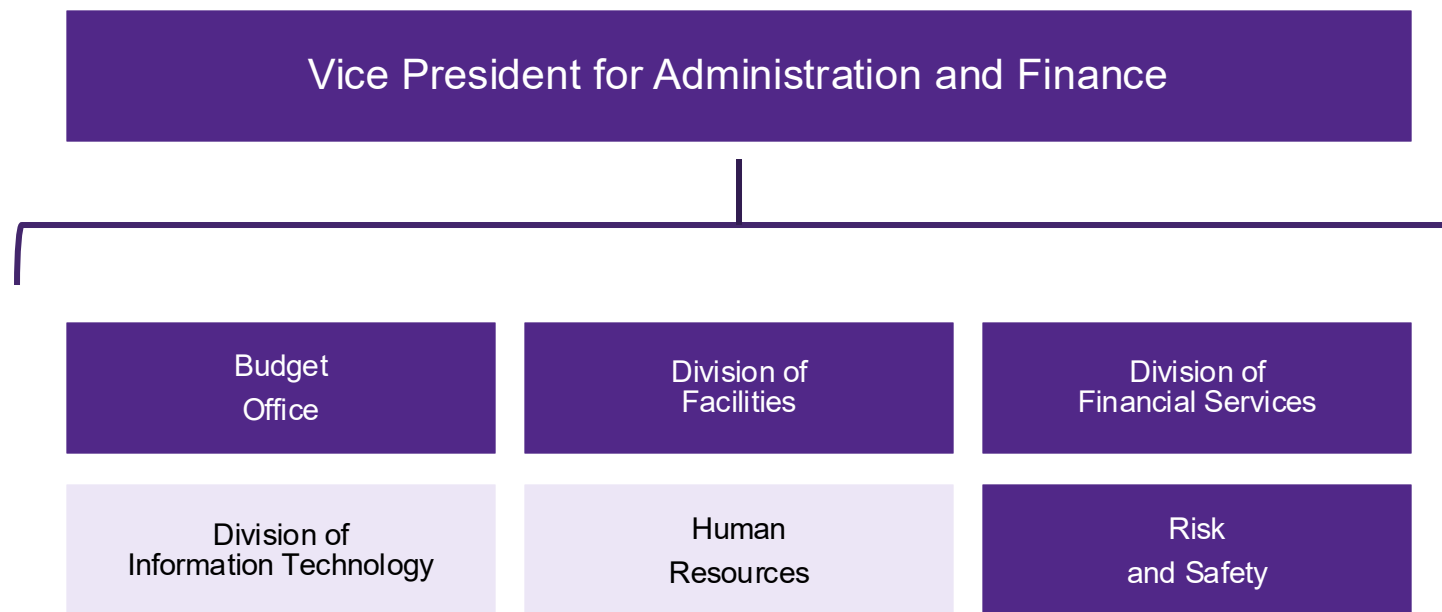
Full-time employee analysis

| | 2023 | 2025 | # Change | Reason | Source of Funding |
|----------------------|------|------|----------|---|---|
| EVP Ext Engmnt & COS | 47.1 | 75.5 | 28.5 | | |
| Leadership | 1.0 | 4.0 | 3.0 | Establish EVP/COS Office Restructure Filled vacancy | Dept. fund realignment Budgeted vacancy |
| Staff | 46.1 | 71.5 | 25.5 | Established EVP/COS Office Established K-State 105 Established Corp. Eng. Office Established Gov. Relations Office Established Water Institute Restructure Filled vacancy | Dept. fund realignment New state appropriations Bond Retirement Fund State and philanthropic Budgeted vacancy |

State and federal legislative support



Office of the Vice President for Administration and Finance Structure



Departments
added

Departments
realigned

Departments
remained the same

Division of Information Technology (IT)

Full-time employee analysis

IT Transformation will not be fully reflected in the Nov. 1 snapshot.

| | 2023 | 2025 | # Change | Reason | Source of Funding |
|----------------|-------|-------|----------|--|--|
| Division of IT | 107.0 | 100.0 | -7.0 | | |
| Leadership | 3.0 | 4.0 | 1.0 | Established new role | University budget realignment |
| Staff | 104.0 | 96.0 | -8.0 | Restructure Vacancy Filled vacancy | Dept. fund realignment Budgeted vacancy |

Division of Information Technology (IT)

Full-time employee analysis

IT Transformation initiative

- **Ongoing hiring**

- Additional positions are being filled to:
 - Secure core infrastructure and improve security posture
 - Develop and maintain core IT infrastructure and workstation environments
 - Modernize and streamline data integrations
 - Establish college or major unit-level IT director positions to collaboratively develop and implement strategic IT plans for a college or major unit

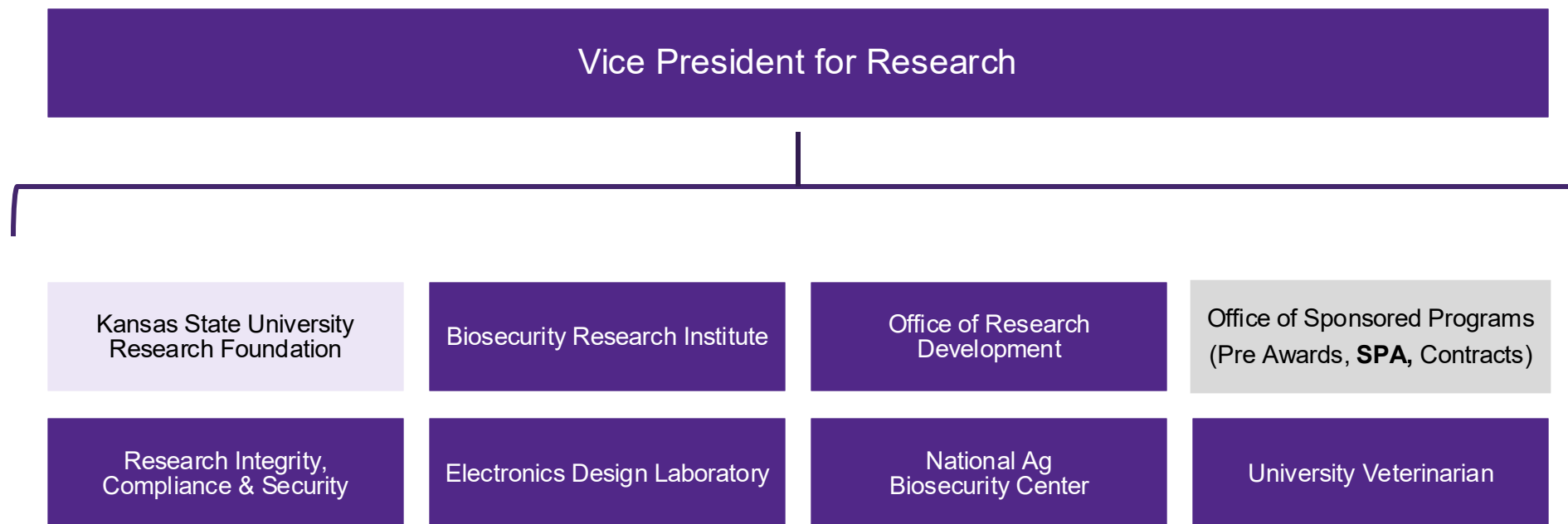
- **FY25 IT transformation budget**

- University realignment was necessary to address critical needs after the cybersecurity incident

- **Realignment of existing college/major unit IT positions**

- Positions and their funding remain in the unit but report through IT

Office of the Vice President for Research Structure



Departments
added

Departments
realigned

Departments
remained the same

Office of the Vice President for Research

Full-time employee analysis

| | 2023 | 2025 | # Change | Reason | Source of Funding |
|---|------|-------------------|----------|--|--|
| Vice President for Research | 93.0 | 100.6 | 7.6 | | |
| Leadership | 7.0 | 7.0 | 0.0 | | |
| Staff + Sponsored Programs Accounting (SPA) (From Division of Financial Services) | 86.0 | 84.6 +9 | 7.6 | Vacancy Filled Vacancy Restructure | Budgeted vacancy Dept. fund realignment |



**Office of the Executive
Vice President for
External Engagement**

Corporate engagement

Economic development

Large business attraction



**Office of the Vice
President for Research**

Entrepreneurship

Intellectual property
support

Licensing

Technology
commercialization



KSU Foundation

Collaborative office space

New synergies and
expertise

Philanthropic support

Robust industry
partnerships



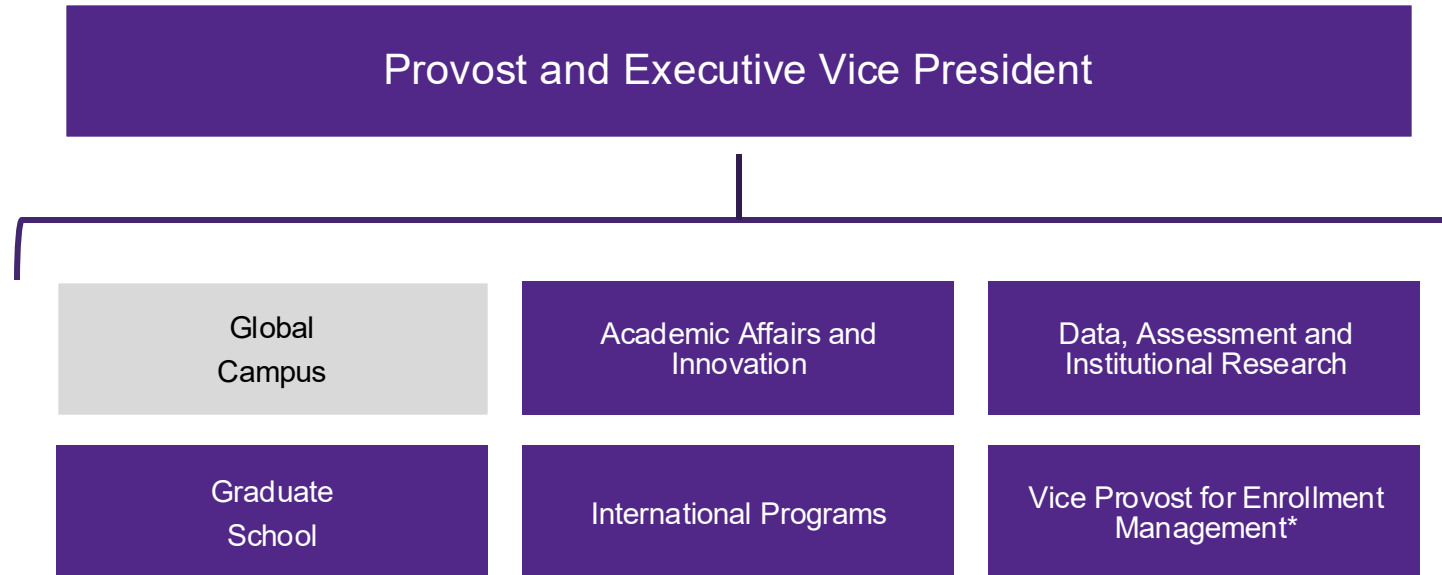
Edge Collaboration District

Kansas State University Research Foundation

Full-time employee analysis

| | 2023 | 2025 | # Change | Reason | Source of Funding |
|----------------------|------|------|----------|-------------|-------------------|
| KSURF (New, Current) | 18.0 | 8.0 | -10.0 | | |
| KSUIP | 18.0 | 0.0 | -18.0 | | |
| KSURF (Old) | 0.0 | 8.0 | 8.0 | Restructure | |

Office of the Provost and Executive Vice President Vice President Structure



Departments
added

Departments
realigned

Departments
remained the same

**Includes Recruitment & Admissions, Student Financial Assistance and Registrar*

Office of the Provost and Executive Vice President

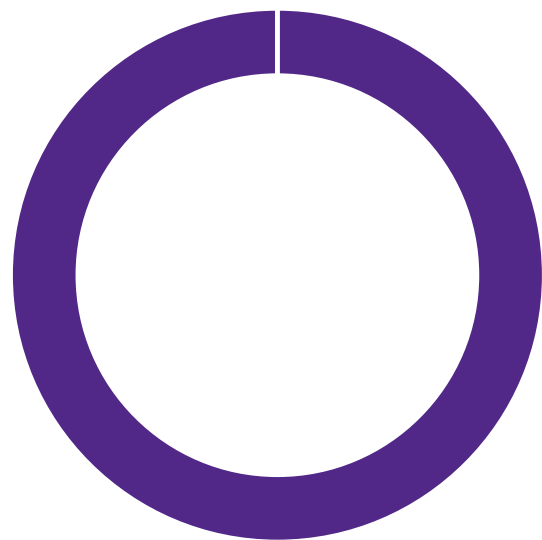
Full-time employee analysis

| | 2023 | 2024 | 2025 | # Change | Reason | Source of Funding |
|------------|-------|-------|-------|----------|--|---|
| Provost | 215.5 | 210.9 | 222.9 | 7.4 | | |
| Leadership | 10.0 | 9.0 | 9.0 | -1.0 | Filled vacancy Restructure | Budgeted vacancy Dept. fund realignment |
| Faculty | 6.8 | 6.5 | 7.0 | 0.3 | Additional staff need | Unit fees |
| Staff | 198.8 | 195.4 | 206.9 | 8.1 | Restructure Established AAI Office Established K-State 105 Established Intl. Inventory Filled vacancy Additional staff need Add Transfer Navigators Restructure | Dept. fund realignment State appropriation Budgeted vacancy One K-State Fund Unit fees Cash reserves |

Office of the Provost and Executive Vice President

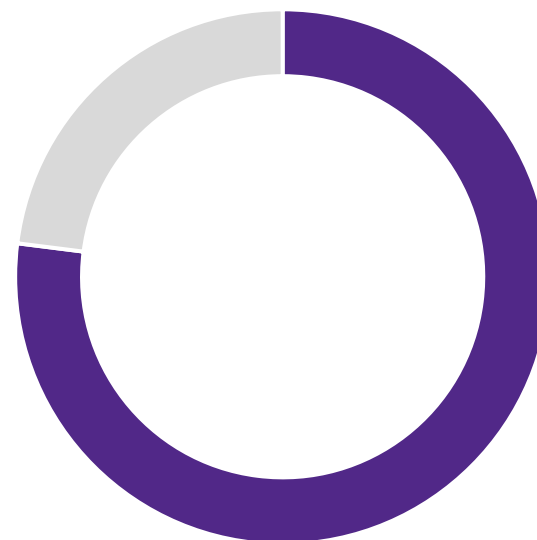
Faculty hiring process and resourcing

Salary and Benefits



■ Colleges ■ VPR office

Startup Packages



■ Colleges ■ VPR Office

KANSAS STATE

UNIVERSITY