

Office of the Vice Provost
Full Org Chart, Page 2

Recruitment and Admissions –
UG & International
Full Org Chart, Pages 4-8

Registrar
Full Org Chart, Page 10

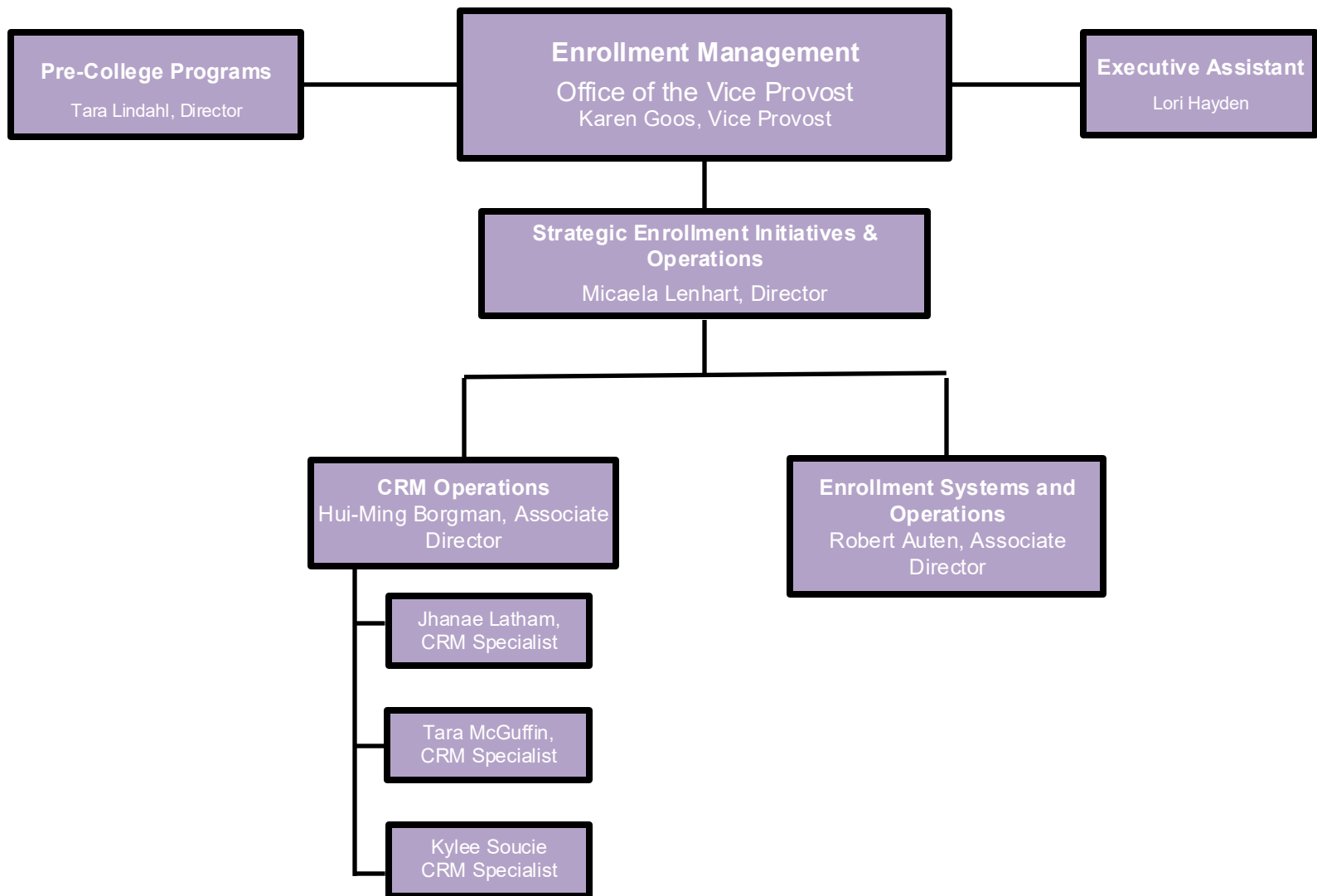
Enrollment Marketing &
Communications
Full Org Chart, Page 3

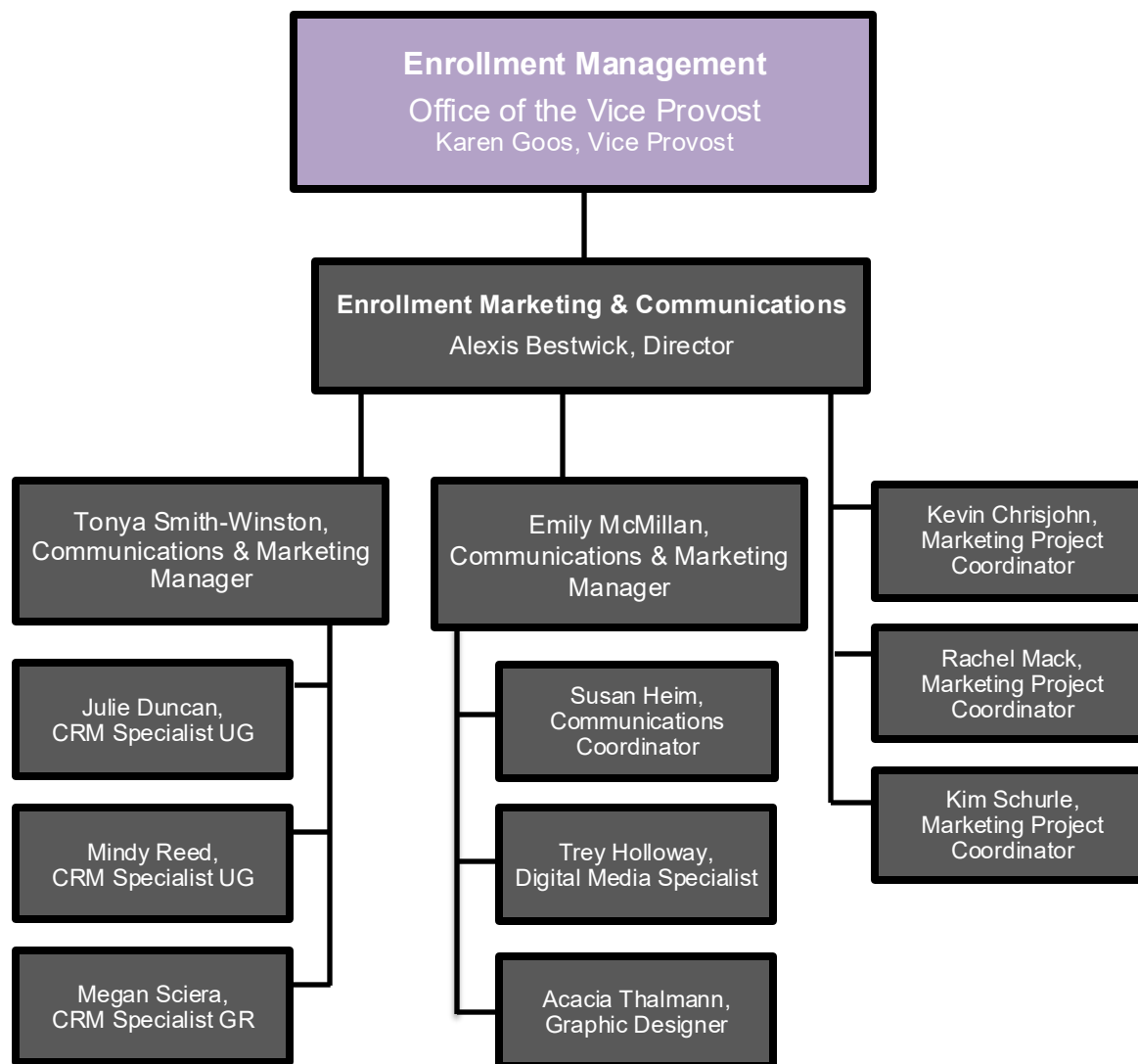
Student Financial Assistance
Full Org Chart, Page 9

Graduate Recruitment
Full Org Chart, Page 11

VPEM Units
Organizational Chart
May 2025

KANSAS STATE
UNIVERSITY



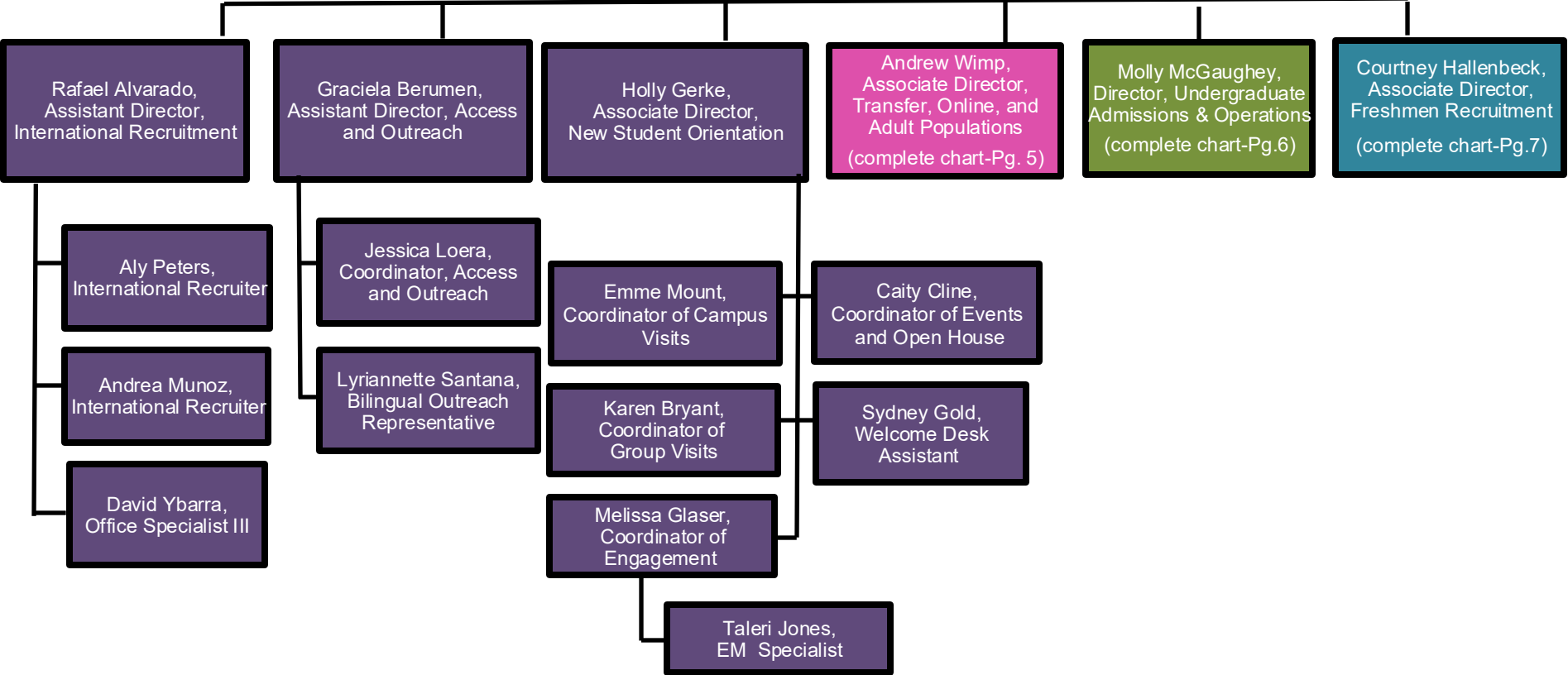


Enrollment Management
Karen Goos, Vice Provost

Amanda Chance,
Office Specialist III

**Recruitment and Admissions –
Undergraduate and International**
Patrick Winter, Associate Vice Provost
& Executive Director

**College
Advising Corps**
Chris Beggs,
Executive Director,
(complete chart-Pg.8)



See complete chart page 5

See complete chart page 7

See complete chart page 6

See complete chart page 8

