

# COLLABORATION: AVOID RECREATING EXISTING CAMPUS SERVICES

Leena Chakrabarti  
Assistant Director  
English Language Program  
Kansas State University

# GENERAL STUDENT HELP

- ◉ Counseling Services
- ◉ Office of Student Life
- ◉ Missing Student Protocol
- ◉ Lafene Health Center
- ◉ ISSS
- ◉ Housing and Dining

# COUNSELING SERVICES

- ◉ Refer individual student cases
- ◉ Three free visits
- ◉ Counselors part of CIRT team (Critical incidence response team)
- ◉ Partnership with Listening classes to become familiar with Counselors
- ◉ Andrew Bratawidjaja,  
Ph.D., LCMFT, CFLE  
International Programs Liaison



# OFFICE OF STUDENT LIFE

- They help us by transitioning international students into the processes
- Individual cases about academics and social behaviors
- CIRT Team
- Missing Student Protocol
- Help with withdrawal of students



Heather Reed , Director

Karen Low, Asst. Director



# MISSING STUDENT PROTOCOL

- ◉ When students disappear from our classes
- ◉ Three step process
- ◉ Step 1 - Internal process within the ELP
- ◉ Step 2 - Search continues in the Office of Student Life
- ◉ Step 3 - Emergency situation
  - We contact the parents and sponsoring agencies

Very successful system!

# LAFENE HEALTH CENTER

- ◉ Coordinate with our health center for TB testing
- ◉ We help them track students who do not return after the initial test
- ◉ We often escort our students to doctor's visits



# INTERNATIONAL STUDENTS AND SCHOLARS SERVICES

- ◉ We are both under the Office of International Programs
- ◉ We work with them for withdrawals
- ◉ Tracking missing students
- ◉ Send our students to the programs they sponsor
- ◉ All information regarding immigration and visa status

# HOUSING AND DINING SERVICES

- ◉ Initial contact with them as students check in
- ◉ Roommate problems
- ◉ Students who might get sick
- ◉ Tracking students who are missing from classes





# ORIENTATION CLASS

- ◉ Office of Academic Integrity
- ◉ Counseling Services
- ◉ Hale Library
- ◉ Women's Center
- ◉ Student Legal Services
- ◉ Claflin Bookstore

# OFFICE OF ACADEMIC INTEGRITY

- ⦿ Honor Code and Council
- ⦿ "On my honor, as a student, I have neither given nor received unauthorized aid on this academic work."
- ⦿ Plagiarism cases- we work with them

# OFFICE OF ACADEMIC INTEGRITY

- ⦿ "On my honor, as a student, I have neither given nor received unauthorized aid on this academic work."

**Ketty Reppert**  
**ELP Advisor**



# COUNSELING SERVICES

- ◉ Presentation by one of their counselors on various topics such as
- ◉ How to find them
- ◉ What services they offer
- ◉ How to make appointments with them
- ◉ Culture shock
- ◉ Adjustment skills
- ◉ Problems they might be facing and how to cope with it

# HALE LIBRARY

- ◉ Jason Coleman and Jeremy Walker
- ◉ Technology and sources
- ◉ 24-hour Reading room
- ◉ Library Etiquette

# WOMEN'S CENTER

- Presentation on relationships in college
- By Mary Todd  
Director/Advocacy  
MA, ABD, Clinical Psychology, Kansas State  
University & University of South Florida
- In a form that our students  
can understand—  
lots of pictures and  
simple vocabulary



# STUDENT LEGAL SERVICES

- Presentations on:

  - Driver's license

  - Traffic tickets

  - Landlords

  - Internet shopping

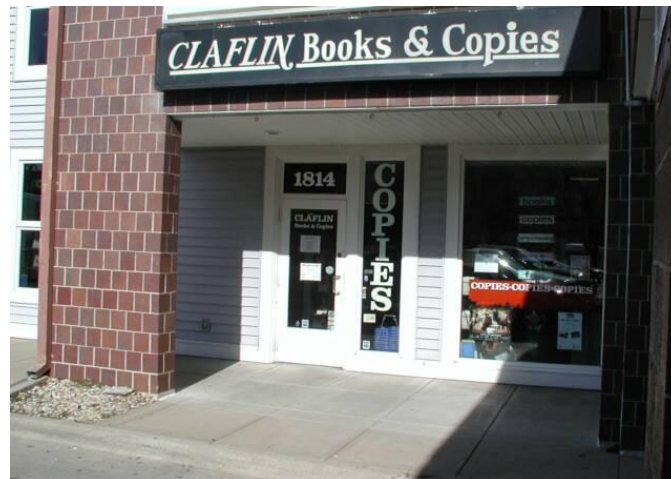
- **Legal Services Attorney** [Sarah Barr](#)

  - BA in Political Science, FHSU, 1979

  - JD Washburn University School of Law, 1985

# CLAFLIN BOOKSTORE

- ◉ Come during orientation for 15 minutes
- ◉ Their location
- ◉ Book Ordering Process
- ◉ Book Returns





# EXIT-LEVEL AND TRANSITIONING STUDENT FOLLOW-UP

- ◉ Communication with Colleges and Departments
- ◉ Contacting faculty members who are teaching our students in academic classes- bridging
- ◉ Pre-Enrollment Orientation



# COMMUNICATION WITH COLLEGES AND DEPARTMENTS

- ◉ College of Business
- ◉ College of Engineering
- ◉ College of Arts and Sciences
- ◉ College of Agriculture
- ◉ College of Human Ecology
- ◉ College of Education

# CONTACTING FACULTY MEMBERS TEACHING OUR STUDENTS

- ◉ Ketty Reppert, one of our advisors, contacts each of the professors who have our part-time students in their classes
- ◉ We offer support for our students, if their lack of performance is due to English capabilities
- ◉ We make appointments with the students who are not being successful and work with them and the university faculty

# PRE-ENROLLMENT ORIENTATION

- ◉ Happens every fall and spring semester
- ◉ Started in spring of 2010
- ◉ A special day when international students who are transitioning get pre-enrolled in classes and learn about resources and special classes
- ◉ In coordination with New Student Service, ISSS, Leadership Studies, First Year Seminars, Academic Assistance Center and various colleges

# TWARD

Training for...

- ◉ Wellness
- ◉ Academics
- ◉ Responsibility
- ◉ Discipline



# CURRENT HANDLING OF NON-PERFORMERS

- ◉ Students on Probation and Reinstatement are monitored through emails
- ◉ Reinstated students are required to meet with an advisor, especially if they are not doing well in classes
- ◉ We monitor attendance twice and ask probation students to come in for an appointment



# TWARD

- ◉ A course being developed for our non performers - students on Reinstatement
- ◉ We will pilot this class in fall for Reinstated students
- ◉ Then we will also implement it for our students on probation
- ◉ We are being proactive in trying to retain students and make them successful

# TWARD

- ◉ Career Counseling
- ◉ Academic assistance in our language lab
- ◉ Counseling Services
- ◉ Powercat financial counseling
- ◉ Environmental awareness
- ◉ Social and Cultural awareness
- ◉ Physical Fitness through our Recreation Center



# CAREER COUNSELING

- A career counselor is going to meet with these students to find out what their interests are and provide them direction for academics and the future

# ACADEMIC ASSISTANCE IN OUR LANGUAGE LAB

- ◉ Required evening and weekend hours in our Language Lab
- ◉ Lab tutors hired from the English Department and Modern Languages Department (TEFL students)

# COUNSELING SERVICES

- ◉ Group counseling about motivation and doing well in academics and in a foreign country
- ◉ Also, how to meet people of other cultures

# POWERCAT FINANCIAL COUNSELING

- ◉ How to manage money given by their parents
- ◉ Avoid comparing with their peers and getting into competitions
- ◉ Foster the concept monetary investments at an early age

# ENVIRONMENTAL AWARENESS

- ◉ Outdoors activities on the Konza prairie
- ◉ Prairie conservation and bison conservation
- ◉ Learn about sustainability and recycling through the office of sustainability at K-State

# SOCIAL AND CULTURAL AWARENESS

- ◉ Volunteer work at the Breadbasket and clean-up of the Milford Lake
- ◉ Volunteer at elementary school carnivals
- ◉ Collaborate with ISSS and send the students to their programs, such as Coffee Hour
- ◉ Challenge course that teaches team building and leadership

# PHYSICAL FITNESS THROUGH OUR RECREATION CENTER

- ◉ Custom physical fitness class for these students to keep them physically fit and teach them discipline
- ◉ Nutrition counseling through the Recreation Center and Lafene Health Center