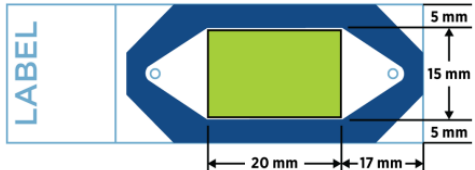
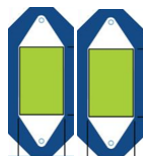


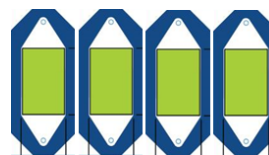
Nanostring's CosMx Spatial Molecular Imager Project Intake Form

Investigator Contact Info			
Investigator(s) Name			
Investigator(s) Email			
Investigator(s) Phone			
Date			
Have you run a CosMx project before?	<div style="display: flex; justify-content: space-between;"> Yes: If yes, where: No: </div>		
Sample Information			
Type	FFPE	Fixed Frozen	Fresh Frozen
Species	Mouse	Human	Other:
Tissue/Organ Type		Section Thickness	
Disease			
Number of Samples		How many samples can you fit on one 1 slide? <small>(See below for parameters)</small>	
<div style="display: flex; align-items: center;"> <div style="flex: 1;"> <p><i>**The green box is the area of analysis. However many sections you can fit within that green area is the amount that can be analyzed on 1 slide**</i></p> </div> <div style="flex: 1; text-align: center;">  </div> </div>			
Sample Availability	<div style="margin-bottom: 10px;">Immediately</div> <div>Future (Provide Details)</div>		
Project Description			
What comparisons would you like to make during the data analysis?			

Run Format



Two Slide Run



Four Slide Run

What Tissue Area Coverage is Needed (How many Fields of View total)?

Note: 1 Field of View (FOV) = 0.259081mm²



4x4mm



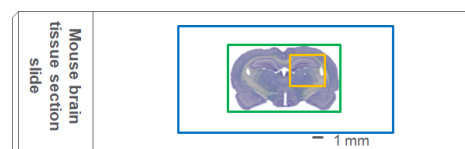
12.5x8mm



20x15mm

Tissue Area Coverage: 16mm² 100mm² 300mm²

of FOVs: 62 386 1158



Total # of FOVs:

Fluorescent Morphology Markers

Desired Morphology Markers

1. CosMx™ Cell Segmentation Kit (Required)

Human Universal (RNA): DAPI & CD298/B2M
PanCK/CD45

Human Universal (Protein): DAPI & CD298/B2M
PanCK/CD45

Mouse Neuroscience (RNA): DAPI & rRNA
Histone & GFAP

Mouse Neuroscience (Protein): DAPI & S6
GFAP & IBA1

2. CosMx™ A La Carte Markers (Optional)

Human (RNA): Cytokeratin 8/18

Mouse(Protein): NeuN

Human (RNA): CD68

Human (Protein): CD68

Human (Protein): CD3

Human (Protein): CD8

Human (Protein): Cytokeratin 8/18

Imaging Content		
CosMx® Assay – RNA	Human 8 JgWtj YfmDUBY`ft \$\$\$`D`YI L	Mouse
	• Custom Add-On (7-200 plex)? Yes No	Neuroscience Panel (1000 Plex) • Custom Add-On(7-50 plex)? Yes No
	Universal Cell Characterization Panel (1000 Plex) • Custom Add-On (7-50 plex)?Á Yes No	Universal Cell Characterization Panel (1000 Plex) •
	Immuno-Oncology Panel (100 Plex) • Custom Add-On (7-10 plex)? Yes No	Custom Add-On fl-I) \$`d`YI L? Yes No No
CosMx® Assay – Protein	Immuno-oncology Panel (64 Plex) • Custom Add-On (1-8 plex)? Yes No	Neuroscience Panel (64 Plex) • Custom Add-On (1-8 plex)? Yes No
	Custom Standalone Panel - 100 Plex	
CosMx® Assay – Custom RNA	Custom Standalone Panel - 350 Plex	
Service Options		
Bioinformatics Assistance?	Yes	No
Data analysis assistance		
Additional Notes		