

# TALENT RECRUITMENT AND ENGAGEMENT



**AGRICULTURE**

**EDUCATION ON-CAMPUS INTERVIEWS**

**VETERINARY MEDICINE**

**BUSINESS ADMINISTRATION**

**ENGINEERING**

**ARTS & SCIENCES**

**ENGINEERING CAREER FAIR**

**ALL-UNIVERSITY CAREER FAIR**

**HEALTH AND HUMAN SCIENCES**

**K-STATE CAREER CENTER**

**BIG 12 VIRTUAL CAREER FAIR**

**AGRI-INDUSTRY CAREER FAIR**

**ARCHITECTURE, PLANNING & DESIGN**

**EDUCATION**

**DESIGN EXPO**

K-STATE CAREER CENTER  
EST. **2016**

EST. **2016**

# WHY #HIREAWILDCAT?

K-STATE STUDENTS AND GRADUATES ARE RECOGNIZED AMONG EMPLOYERS FOR THEIR TOP-QUALITY ACADEMIC PREPARATION, HANDS-ON EXPERIENCE AND STRONG WORK ETHIC. THESE QUALITIES PRESENT AN UNBEATABLE COMBINATION FOR PROSPECTIVE EMPLOYERS.

**TOP  
50**

**K-STATE'S  
2025 GOAL  
TO BE RANKED  
AMONG PUBLIC  
RESEARCH  
UNIVERSITIES**

**250+**

UNDERGRADUATE PROGRAMS

**165+**

GRADUATE DEGREES AND  
CERTIFICATES

**500+**

STUDENT ORGANIZATIONS

- STUDENTS HAVE NUMEROUS MEANS TO CONDUCT RESEARCH ALONGSIDE AWARD-WINNING FACULTY.
- PROFESSORS INCLUDE MEMBERS OF THE NATIONAL ACADEMY OF SCIENCES, REGENTS DISTINGUISHED PROFESSORS, CASE PROFESSORS OF THE YEAR AND MANY PROFESSIONAL SOCIETIES.

## 9 ACADEMIC COLLEGES



AGRICULTURE



ARCHITECTURE, PLANNING & DESIGN



ARTS & SCIENCES



BUSINESS ADMINISTRATION



EDUCATION



ENGINEERING



HEALTH AND HUMAN SCIENCES



TECHNOLOGY & AVIATION

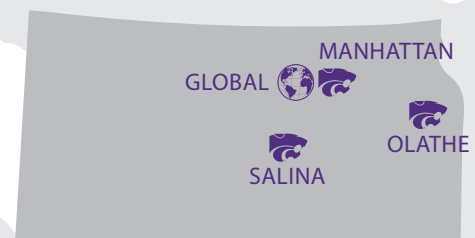


VETERINARY MEDICINE

**20,000**

**K-STATE STUDENTS  
FROM ALL 50 STATES  
AND OVER 100 COUNTRIES**

**4 CAMPUSES**



# OPPORTUNITIES TO CONNECT

THE CAREER CENTER OFFERS MANY WAYS FOR YOU TO BUILD YOUR BRAND ON CAMPUS, CONNECT WITH K-STATE STUDENTS AND ULTIMATELY RECRUIT THEM FOR YOUR POSITIONS.



## CAREER FAIRS

<b>SEPTEMBER</b>	ALL-UNIVERSITY CAREER FAIR
<b>FEBRUARY</b>	ENGINEERING CAREER FAIR
<b>MARCH</b>	DESIGN EXPO
<b>MARCH</b>	BUSINESS CAREER FAIR

*CONNECT WITH STUDENTS ACROSS CAMPUS*



## ON-CAMPUS BRANDING

### 1 INFORMATION SESSIONS

Let the Career Center assist you in identifying an effective location, date and time for an on-campus informational session. We'll also help spread the word that you're coming to campus!

### 2 SPECIAL EVENTS

The Career Center hosts a variety of small networking events, mock interviews and other activities throughout the year to allow key employers to engage with students.

### 3 STUDENT ORGANIZATIONS

The Career Center can connect your company with students of more than 500 student organizations and clubs on campus!

### 4 CLASSROOM INVOLVEMENT

Meet with key faculty, be a guest speaker, or sponsor a classroom research project. Requests for involvement are granted at the discretion of faculty. Let us know if we can help make an introduction for you.



## ONLINE SERVICES

### JOBS OR INTERNSHIPS

Jobs posted in Handshake are available to students 24/7. By listing jobs electronically, you may review submitted resumes.

### RESUME ACCESS

Search our online database by keyword, academic major or other criteria for candidates who match your employment needs.

### STUDENT INTERVIEWS

Meet with students from all nine academic colleges in a cost-effective and efficient manner. Manage interview schedules using your online Handshake account.



## CHAMPION PROGRAM

Want to go farther faster with your employer branding? Learn more about sponsorship opportunities as a Career Center Champion by visiting [k-state.edu/careercenter/employers](http://k-state.edu/careercenter/employers).

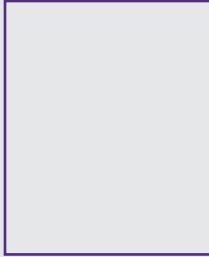


"I'd like to thank the career services and College of Engineering teams, for the amazing service provided to us this year. We recruit at over 30 universities nationwide and K-State is consistently one of our favorites to recruit at, largely due to the quality of students from the College of Engineering and the level of service we receive from the career services team."

**MATT  
ROSENTERER,  
BURNS &  
MCDONNELL**

# FIND YOUR CONTACT

CONTACT OUR EMPLOYER RELATIONS TEAM TO FIND OUT MORE ABOUT OPPORTUNITIES AT K-STATE AND DEVELOP A CUSTOMIZED RECRUITMENT PLAN FOR YOUR ORGANIZATION.



**LIZ PARKES**

EMPLOYER RELATIONS ASSOCIATE  
O: 785-532-6506  
egparkes@ksu.edu



**DR. KERRI DAY KELLER**

EXECUTIVE DIRECTOR  
kdkeller@k-state.edu

## COLLEGE LIAISONS



**MARY ELLEN BARKLEY**  
ASSISTANT DIRECTOR  
**Agriculture**  
**Veterinary Medicine**  
mebark@ksu.edu



**ANTHONY YBARRA**  
ASSOCIATE DIRECTOR  
**Architecture**  
anthonyy@ksu.edu



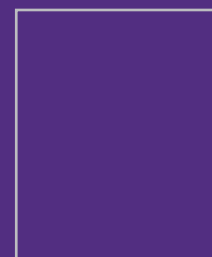
**CHLOE WURST EDGER**  
ASSISTANT DIRECTOR  
**Arts & Sciences**  
**(Undergraduates)**  
cnwurst@ksu.edu



**TBD**  
ASSISTANT DIRECTOR  
**Education and Arts & Sciences (Graduate)**



**TERESA PARKS**  
ASSISTANT DIRECTOR  
**Health & Human Sciences**  
twparks@ksu.edu



**TBD**  
ASSISTANT DIRECTOR  
**Engineering**



# COLLEGE-TO-CAREER SNAPSHOT

## 2021-2022 BACHELOR'S DEGREE GRADUATES



### TOP CORPORATE EMPLOYERS

- 1 Shamrock Trading Corporation
- 2 Burns and McDonnell
- 3 Garmin
- 4 Textron
- 5 Netsmart Technologies
- 6 Koch Industries
- 7 Kiewit
- 8 Cargill
- 9 Farm Bureau Financial Services
- 10 KC National Security Campus  
Great Plains Manufacturing  
Oracle Corporation



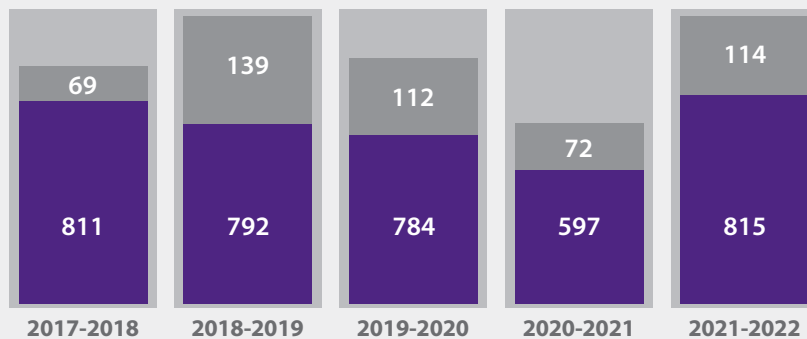
### TOP USD EMPLOYERS

- 1 Manhattan-Ogden 383
- 2 Geary County 475
- 3 Kansas City Kansas 500
- 4 Blue Valley 229
- 5 Salina 305  
Shawnee Mission 512



### EMPLOYERS RECRUITING

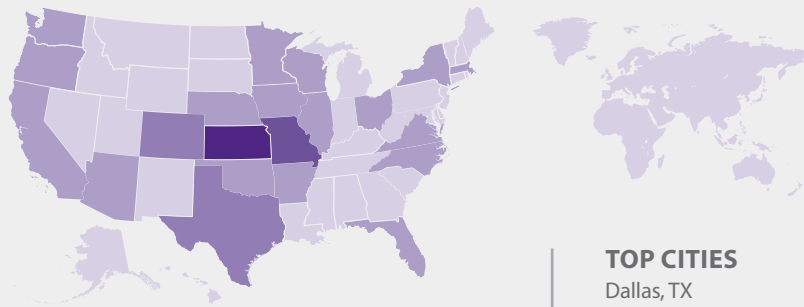
Career Meetups Career Fairs



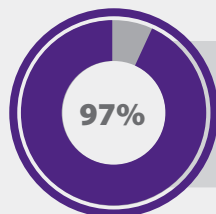
### JOB PLACEMENT OF NEW GRADUATES

#### EMPLOYMENT DESTINATIONS

59% in Kansas 78% in KS, CO, MO, NE, OK 21% in rest of US 1% internationally



1-9 10-49 50-99 100-299 300+



Percentage of graduates employed or enrolled in graduate or professional school within six months after graduation

#### TOP CITIES

- Dallas, TX
- Denver, CO
- Hutchinson, KS
- Junction City, KS
- KC Metro, KS/MO
- Manhattan, KS
- Omaha, NE
- Salina, KS
- Topeka, KS
- Wichita, KS

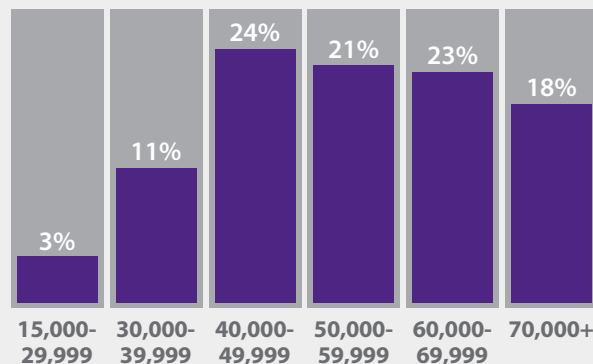


94,076

HANDSHAKE  
JOB LISTINGS



### REPORTED EMPLOYMENT SALARIES



**KANSAS STATE**  
UNIVERSITY

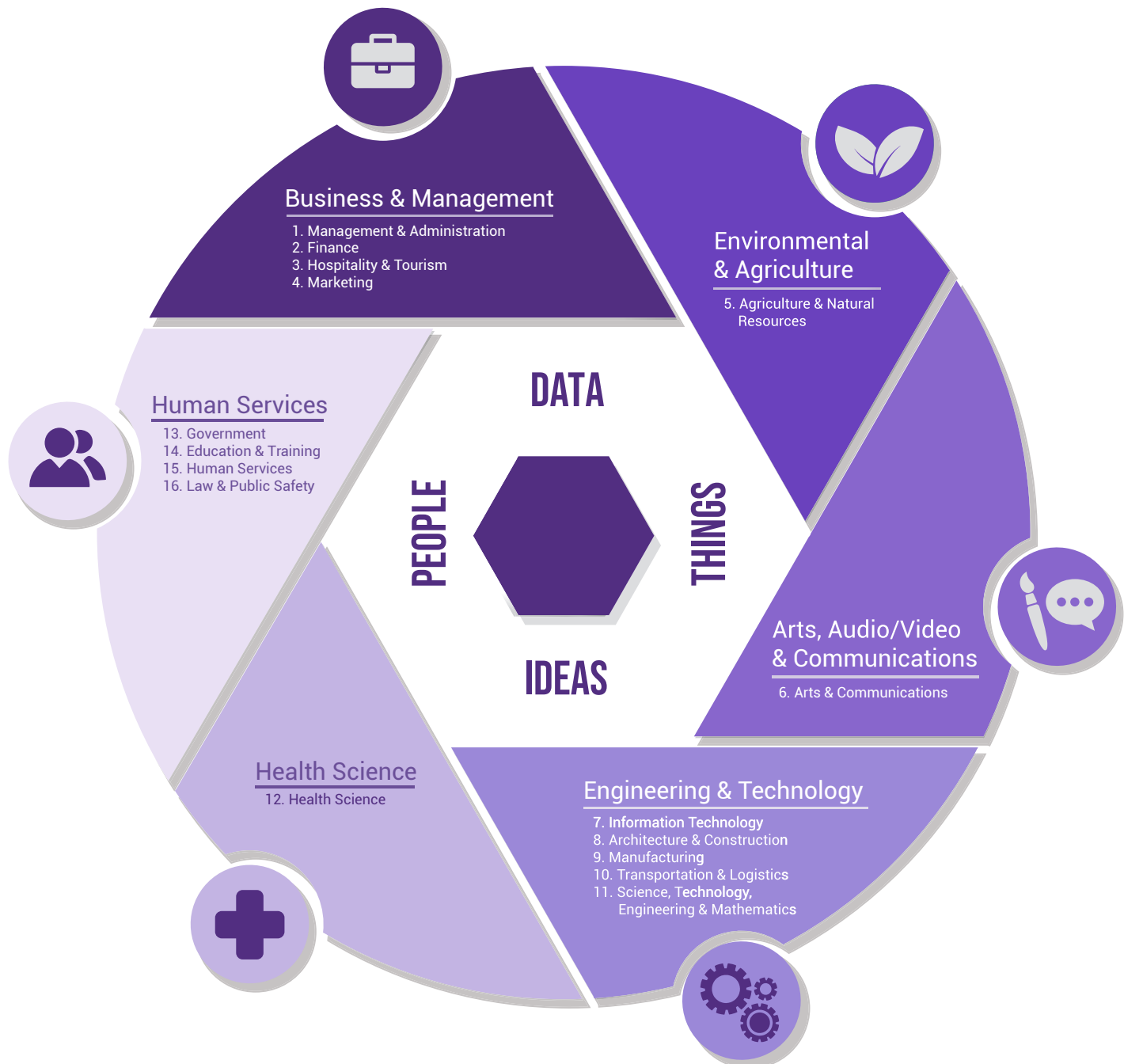
# NAVIGATION GUIDE

## CONNECTING GRADUATE AND UNDERGRADUATE PROGRAMS WITH CAREER FIELDS

THE CAREER CENTER FACILITATES THE CAREER READINESS OF ALL STUDENTS THROUGHOUT THE K-STATE COMMUNITY.

Match K-State talent to your company's internships, co-ops and part-time or full-time opportunities.

Based on the Kansas Career Cluster model, careers are organized into six broad fields related to primary work tasks. The six fields are then divided into 16 career clusters based on their associated knowledge.



# K-STATE UNDERGRADUATE PROGRAMS BY CAREER CLUSTER

Color key by college

- |                                   |                             |
|-----------------------------------|-----------------------------|
| ■ Agriculture                     | ■ Education                 |
| ■ Architecture, Planning & Design | ■ Engineering               |
| ■ Arts & Sciences                 | ■ Health and Human Sciences |
| ■ Business Administration         | ■ Technology & Aviation     |

## 1. MANAGEMENT & ADMINISTRATION

- Agribusiness
- Ag. Comm. & Journalism
- Agricultural Economics
- Ag. Technology Mgmt.
- Agronomy
- Apparel & Textiles
- Business Administration
- Construction Science & Mgmt.
- Economics
- Entrepreneurship
- Finance
- Hospitality Mgmt.
- Human Resource Mgmt.
- Int. Business Certificat
- Management
- Mgmt. Information Systems
- Ops. & Supply Chain Mgmt.
- Psychological Sciences
- Wildlife & Outdoor Mgmt.

## 2. FINANCE

- Accounting
- Agribusiness
- Agricultural Economics
- Business Administration
- Economics
- Finance
- Personal Financial Planning
- Statistics

## 3. HOSPITALITY & TOURISM

- Entrepreneurship
- Golf Course Mgmt.
- Hospitality Mgmt.
- Marketing
- Park Mgmt. & Conservation
- Wildlife & Outdoor Mgmt.

## 4. MARKETING

- Strategic Communications
- Agribusiness
- Ag. Comm. & Journalism
- Apparel Marketing
- Business Administration
- Int. Business Certificat
- Journalism
- Marketing
- Sales

## 5. AGRICULTURE & NATURAL RESOURCES

- Agribusiness
- Agricultural Economics

## 6. ARTS & COMMUNICATIONS

- Ag. Technology Mgmt.
- Agronomy
- Animal Science & Industry
- Bakery Science & Mgmt.
- Biochemistry & Molecular Biophysics
- Biological Systems Eng.
- Biology
- Chemistry
- Civil Engineering
- Feed Science Mgmt.
- Fisheries, Wildlife & Conservation Biology
- Food Science & Industry
- Geography
- Geology
- Golf Course Mgmt.
- Horticulture
- Life Science
- Mathematics
- Microbiology
- Milling Science & Mgmt.
- Natural Resource/Environ. Sci.
- Park Mgmt. & Conservation
- Physical Science
- Physics
- Pre-Veterinary Medicine
- Sports Turf Mgmt.
- Wildlife & Outdoor Mgmt.

## 6. ARTS & COMMUNICATIONS

- Ag. Comm. & Journalism
- Art
- Comm. Sciences & Disorders
- Strategic Communications
- Dance
- Digital Media
- English
- French
- German
- Graphic Design
- Interior Design
- International Studies
- Journalism
- Landscape Design
- Music
- Photography
- Spanish
- Theatre

## 7. INFORMATION TECHNOLOGY

- Ag. Technology Mgmt.
- Computer Engineering

## 8. \*ARCHITECTURE & CONSTRUCTION

- Computer Science
- Computer Systems Tech.
- Electronic & Comp. Eng. Tech.
- Mgmt. Information Systems
- Architectural Engineering
- Business Administration
- Civil Engineering
- Construction Science & Mgmt.
- Interior Design
- Landscape Design

## 9. MANUFACTURING

- Ag. Technology Mgmt.
- Bakery Science & Mgmt.
- Feed Science & Mgmt.
- Food Science & Industry
- Industrial Engineering
- Mechanical Engineering Tech.
- Milling Science & Mgmt.

## 10. TRANSPORTATION & LOGISTICS

- Aviation Maintenance Mgmt.
- Airport Mgmt.
- Civil Engineering
- Helicopter Pilot
- Ops. & Supply Chain Mgmt.
- Professional Pilot

## 11. SCIENCE, TECHNOLOGY, ENGINEERING, & MATHEMATICS

- Ag. Technology Mgmt.
- Agronomy
- Animal Science & Industry
- Architectural Engineering
- Bakery Science & Mgmt.
- Biochemistry
- Biological Systems Eng.
- Chemistry
- Chemical Engineering
- Civil Engineering
- Computer Science
- Computer Engineering
- Construction Sci & Mgmt.
- Electrical Engineering
- Engineering
- Food Science & Industry
- Horticulture
- Industrial Engineering
- Mathematics
- Mechanical Engineering Tech.
- Milling Science & Management

## 12. HEALTH SCIENCE

- Animal Science & Industry
- Athletic Training
- Biology
- Medical Laboratory Science
- Comm. Sciences & Disorders
- Dietetics
- Gerontology
- Human Nutrition
- Kinesiology
- Medical Biochemistry
- Nutritional Sciences
- Pre-Chiropractic Medicine
- Pre-Dentistry
- Pre-Health Info. Mgmt.
- Pre-Medicine
- Pre-Nursing
- Pre-Occupational Therapy
- Pre-Optometry
- Pre-Pharmacy
- Pre-Physical Therapy
- Pre-Physicians Assistant
- Pre-Psychology
- Pre-Respiratory Therapy
- Pre-Veterinary Medicine
- Public Health Nutrition

## 13. GOVERNMENT

- Agricultural Economics
- American Ethnic Studies
- Economics
- History
- International & Area Studies
- Park Mgmt. & Conservation
- Political Science
- Social Science
- Sociology/Criminology

## 14. EDUCATION & TRAINING

- Agricultural Education
- Early Childhood Education
- Elementary Education
- Early Childhood Education
- Family and Consumer Science Education
- Mathematics
- Music Education
- Secondary Education
- Special Education

## 15. HUMAN SERVICES

- Agricultural Education
- Anthropology
- Entrepreneurship
- Human Development and Family Sci.
- Gender, Women & Sexuality Stu.
- Gerontology
- Horticulture
- Hospitality Mgmt.
- Human Ecology
- Philosophy
- Political Science
- Pre-Law
- Park Mgmt. & Conservation
- Psychological Studies
- Social Science
- Social Work
- Sociology/Criminology

## 16. LAW & PUBLIC SAFETY

- Animal Sciences & Industry
- Agricultural Economics
- Anthropology
- Food Science & Industry
- Gender, Women & Sexuality Stu.
- History
- Humanities
- Philosophy
- Political Science
- Psychological Sciences
- Social Science
- Sociology/Criminology

For more information on Kansas Career Clusters visit [ksde.org](http://ksde.org).

\*APD students enroll in a five-year master's program and can come directly from high school and graduate five years later with a professional master's degree.

# K-STATE GRADUATE PROGRAMS BY CAREER CLUSTER

Color key by college

- |  |   |
|--|---|
| <span style="color: green;">■</span> Agriculture                   | <span style="color: brown;">■</span> Engineering                |
| <span style="color: red;">■</span> Architecture, Planning & Design | <span style="color: orange;">■</span> Health and Human Sciences |
| <span style="color: purple;">■</span> Arts & Sciences              | <span style="color: pink;">■</span> Technology & Aviation       |
| <span style="color: grey;">■</span> Business Administration        | <span style="color: black;">■</span> Veterinary Medicine        |
| <span style="color: blue;">■</span> Education                      |   |

## 1. MANAGEMENT & ADMINISTRATION

- MA/ACC Accounting
- ● MAGB Agribusiness
- MBA Business Administration
- MA/PhD Economics
- ● MS/PhD Educational Leadership
- MEM Engineering Mgmt.
- ● MS Dietetics
- ● MS Apparel & Textiles
- MS/PHD Psychological Studies

## 2. FINANCE

- MA/ACC Accounting
- ● MAGB Agribusiness
- ● MS/PhD Agricultural Economics
- MBA Business Administration
- MA/PHD Economics
- ● MS/PhD Personal Financial Planning

## 3. HOSPITALITY & TOURISM

- MBA Business Administration
- ● MS Dietetics
- ● MS Hospitality & Administration
- PhD Human Ecology

## 4. MARKETING

- ● MS/PhD Apparel & Textiles
- MBA Business Administration
- MA/MS Communications Studies
- MS Journalism & Mass Comm.

## 5. AGRICULTURE & NATURAL RESOURCES

- ● MAGB Agribusiness
- ● MS/PhD Agricultural Economics
- ● MS Ag. Education & Comm.
- ● MS/PhD Agronomy
- ● MS/PhD Animal Science
- ● MS/PhD Biochemistry
- ● MS/PhD Biology
- ● MS/PhD Biological & Ag. Eng.
- ● MS/PhD Chemistry
- ● MS/PhD Chemical Engineering
- ● MS/PhD Civil Engineering
- ● MS Community Development
- ● MS/PhD Entomology
- ● PhD Environ. Design & Planning
- ● MS/PhD Food Science
- ● MS/PhD Genetics
- MA/PhD Geography
- MS Geology
- ● MS/PhD Grain Science
- ● MS/PhD Horticulture
- ● MLA Landscape Architecture

- ● MS/PhD Mathematics
- PhD Microbiology
- ● MS Operations Research
- PhD Pathobiology
- ● MS/PhD Physics
- ● MS/PhD Plant Pathology
- ● MRCP Masters of Regional & Community Planning
- ● MS/PhD Statistics
- DVM Veterinary Medicine
- MS Veterinary Biomedical Sc

## 6. ARTS & COMMUNICATIONS

- ● MS Ag. Education & Comm.
- MA/MS Communications Studies
- MA English
- MFA Fine Arts
- MS Journalism & Mass Comm.
- MA Modern Languages
- MM Music
- MA Theatre

## 7. INFORMATION TECHNOLOGY

- ● MS/PhD Computer Science
- ● MS/PhD Mechanical Eng.
- ● MS Software Engineering
- ● PM Technology

## 8. \*ARCHITECTURE & CONSTRUCTION

- ● MARCH/MS Architecture
- ● MS Architectural Engineering
- MBA Business Administration
- ● MS/PhD Civil Engineering
- ● MS Community Development
- MA/PhD Geography
- ● MIAPD Masters of Int. Arch. & Product Design
- ● MLA Landscape Architecture
- ● MRCP Masters of Regional & Community Planning
- ● PhD Environ. Design & Planning

## 9. MANUFACTURING

- ● MS/PhD Biological & Ag Eng.
- ● MEM Engineering Mgmt.
- ● MS/PhD Food Science
- ● MS/PhD Grain Science
- ● MS/PhD Industrial Engineering
- ● PM Technology

## 10. TRANSPORTATION & LOGISTICS

- MBA Business Administration
- ● MS/PhD Civil Engineering
- ● MS Software Engineering
- ● PM Technology

## 11. SCIENCE, TECHNOLOGY, ENGINEERING, & MATHEMATICS

- ● MS Architectural Engineering
- ● MARCH/MS Architecture
- ● MS/PhD Biological & Ag. Eng.
- ● MS/PhD Chemical Engineering
- ● MS/PhD Civil Engineering
- ● MS/PhD Computer Science
- ● MS/PhD Electrical Engineering
- ● MEM Engineering Mgmt.
- ● PhD Environ. Design & Planning
- ● MS Int. Arch. & Product Design
- ● MLA Landscape Architecture
- ● MS/PhD Mechanical Eng.
- ● MS/PhD Nuclear Engineering
- ● MS Operations Research
- ● MRCP Masters of Regional & Community Planning
- ● MS Software Engineering
- ● PM Technology
- ● MS/PhD Agronomy
- ● MS/PhD Animal Science
- ● MS/PhD Entomology
- ● MS/PhD Food Science
- ● MS/PhD Genetics
- ● MS/PhD Grain Science
- ● MS/PhD Horticulture
- ● MS/PhD Plant Pathology
- ● MS Veterinary Biomedical Science
- PhD Pathobiology
- PhD Anatomy & Physiology
- DVM Veterinary Medicine

## 12. HEALTH SCIENCE

- ● MS Biomedical Science
- ● MS Dietetics
- ● MS Gerontology
- ● MS/PhD Human Nutrition
- ● MS Kinesiology
- MPA Public Administration
- MPH Public Health
- MS Athletic Training

## 13. GOVERNMENT

- ● MS/PhD Agricultural Economics
- MA/PhD Economics
- MA Political Science
- MPA Public Health
- MA/PhD Security Studies
- MA/PhD Sociology/Criminology

## 14. EDUCATION & TRAINING

- ● MS Academic Advising
- ● MS/PhD/EdD Adult, Occupational

## & Cont. Ed.

- ● MS Ag. Education & Comm.
- ● MS/PhD Counseling & Stu. Dev.
- ● MS/PhD/EdD Curriculum & Inst.
- ● MS/EdD Educational Leadership
- MA English
- ● MS Family Studies & Human Svcs.
- MFA Fine Arts
- MA/PhD History
- ● MS/PhD Mathematics
- MA Modern Languages
- MM Music
- ● MS/PhD Psychological Studies
- ● MS/EdD Special Education
- ● MS/PhD Statistics
- MA Theatre

## 15. HUMAN SERVICES

- ● MS/PhD/EdD Adult, Occupational & Cont. Ed.
- ● MS Apparel and Textiles
- ● MS/PhD Counseling & Stu. Dev.
- ● MS Family and Comm. Services
- ● MS Family Studies & Human Svcs.
- ● PhD Human Ecology
- ● MS/PhD Psychological Studies
- MA/PhD Sociology/Criminology
- ● MS/EdD Special Education

## 16. LAW & PUBLIC SAFETY

- MA/PhD Economics
- ● MS Family Studies & Human Svcs.
- MA/PhD History
- MA Modern Languages
- MA Political Science
- ● MS/PhD Psychological Studies
- MA/PhD Security Studies
- MA/PhD Sociology/Criminology

For more information on Kansas Career Clusters visit [ksde.org](http://ksde.org).

\*APD students enroll in a five-year master's program and can come directly from high school and graduate five years later with a professional master's degree.