


Career and Employment Services
Guiding You from College to Career
 Kansas State University

CES Employer Advisory Board

Welcome to today's virtual meeting.....



- The telephone access number is **785-395-0828**
- Access Code: 1691#
- Please MUTE your phone using *6
- We will begin in just a few minutes
- If you are having any **technical problems**, call 785-532-1691.





Today's Agenda


10:00-10:30am Welcome and introductions


10:30-10:45am Highlights from Fall 2015

10:45-11:00am What's ahead for 2016

11:00-11:45am Webinar presentation
Tips for Total Internship Management
Robert Shindell, Intern Bridge

11:45-12:00pm Wrap-up





Introductory Roll Call



What is your most used social media tool?

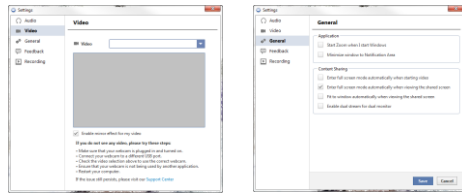


Webinar Toolbar



KANSAS STATE
UNIVERSITY

Settings



KANSAS STATE
UNIVERSITY

Employer Attendees

As of 1/6/16

Company/Organization	First name	Last name	Title	City	State
Big Lakes Developmental Center, Inc.	Lori	Feldkamp	President & CEO	Manhattan	KS
Black & Veatch	Justin	Libery	Recruiter	Overland Park	KS
BNSF Railway	Matt	Whitaker	Staffing Specialist	Fort Worth	TX
Burns & McDonnell	Matt	Reutenster	College Recruiter	Kansas City	MO
Cargill	Josh	Upton	University Recruiting Supervisor	Minneapolis	MN
Carter Corporation	David	Gilman	Campus Recruiter	Kansas City	MO
Chesapeake Phillips	Stephen	Goff	Plant Manager	Bryant	TX
Chesapeake Phillips Chemical Co.	Stacy	Clark	Business Analyst - HR/Recruiting Team Lead	The Woodlands	TX
ConocoPhillips	David	Alstrom	Adjunct, University Relations	Bartlesville	OK
Enterprise Holdings	David	Byron	Talent Acquisition Specialist	Memphis	KS
Garmco International	Nikki	Thomas	University Relations/Recruiter	Chattanooga	KS
GTW/Spectra	Jessica	Thomas	Recruiter	Manhattan	KS
Kansas Department of Agriculture	Lindsay	Hoxington	Assistant Human Resources Director	Manhattan	KS
Rock Industries	Arnell	Stacy	Accounting Manager	Wichita	KS
Unum (Formerly Perceptics Software)	Shannon	Chapman	Campus Program Manager	Lincoln	KS
Manhattan Area Chamber of Commerce	Yvonne	Amend	Executive Development	Manhattan	KS
Manhattan Ogden (CD 38)	Larry	Dell	Director of Human Resources	Manhattan	KS
Paycom/AdaptiveSource	Nick	Woodward	Dr. Recruiter	Tyngsboro	KS
Peace Corps	Becky	Carmen	K. State Campus Recruiter	Manhattan	KS
Pharmacia	Michelle	Baughman	Senior Analyst, University Relations	Prosser	TX
Stellar	Sherry	Swenson	Senior Recruiter	Minneapolis	MN
State Street	Dana	Garrison	TA Specialist, Officer	AC	MO
State Street	Renee	Hoskins	Recruiting Coordinator	Kansas City	MO
Triadon Aviation	Tyler	Allen	University Relations Manager	Wichita	KS
Triadon Aviation	Katie	Clifford	Intern Program Manager	Wichita	KS
Union Pacific	Jennifer	Bull	Recruitment Manager	Kansas City	MO

KANSAS STATE
UNIVERSITY



Introductory Poll

What is your most used social media tool?



K-State Participants

Diana Blake, Associate Director, Information Systems Office
Emily Lehning, Associate VP, Student Life
Jessica Arnold, Assistant Coordinator, New Student Services
Marietta Milligan, Business Analyst, Information Systems Office
Rebecca Robinson, Director of Econ Development, KSU-Institute of Commercialization
Richard Potter, Director of Corporate Engagement



CES Participants

Anthony YBarra, Employer Relations Coordinator	anthonyy@ksu.edu
Andrew Kohls, Career Development Coordinator	andrewkohls@ksu.edu
Angela Hayes, Asst Dir, Grad Students & Alumni	angelagh@ksu.edu
Anne DeLuca, Asst Dir, Engineering	ajdeluca@ksu.edu
Dana Nordyke, Asst Dir, Arch & Human Ecology	nordyke@ksu.edu
Jorge Placuda, Int Asst Dir, Arts & Sciences	jep0151@ksu.edu
Kevin Mokhtarian, Assoc Dir, Business	kevinm@ksu.edu
Mary Ellen Barkley, Asst Dir, Agriculture & Vet Med	mebark@ksu.edu
Pat Hudgins, Assoc Dir, Education	phudgins@ksu.edu
Kerri Day Keller, Director	kdceller@ksu.edu



CES by the Numbers...

- 4.6.....Student rating of career advising (5.0)
- 6.....CES affiliated Career Fairs
- 94.....% of graduates employed or enrolled in additional education six months out
- 396.....Presentations for students
- 583.....Employers recruiting on campus
- 4,663.....On-campus interviews
- 7,473.....Students who attended Career Fairs
- 10,035...Activated! K-Staters
- 12,230....Jobs and internships listed online

Based on data collected 2014-15



Career and Employment Services
Guiding You from College to Career
Kansas State University

KANSAS STATE
UNIVERSITY

Fall 2015 Highlights

	Fall 2015		Fall 2014
AUCF employers	326	↑	320
AUCF students	4,563	↑	4,467
Presentations	148	↓	209
To participants	5,371	↓	7,592
Appointments	1,554	↑	1,311
Walk ins	704	★	710
Activations	7,235	↑	7,109
Corporate Partners	22	↓	24

KANSAS STATE
UNIVERSITY

Backyard BBQ 2015



KANSAS STATE
UNIVERSITY

Career Closet

CAREER CLOSET
& Resume Critiques

SEPT. 14 & 17
11 AM - 2 PM
UNION COTTONWOOD ROOM

SPONSORED BY **KKOCH**

#Career and Employment Services
Looking for Best College 2016
#KStateCares

312 students served
552 items given away



KANSAS STATE UNIVERSITY

Late Night Resume Madness

LATE NIGHT RESUME MADNESS

get your resume ready for the all university career fair and upcoming interviews

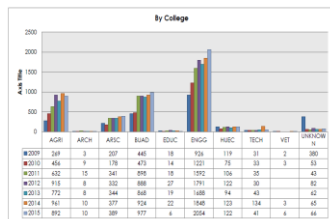
SEPT. 21
7-10 PM
ALUMNI CENTER

SPONSORED BY **KKOCH**

#Career and Employment Services
Looking for Best College 2016
#KStateCares

KANSAS STATE UNIVERSITY

All-University Career Fair



KANSAS STATE UNIVERSITY

AUCF Refreshments

Kelli Day Walter
10/25/2015
 Day 1 refreshments - 80oz bottles H2O and 925 energy bars for 2,000+ @ksate students. Thank you @ksate, CES Corporate Partners! pic.twitter.com/FDy6oUk0uk
6:57pm · 22 Sep 15 from Manhattan, KS



KANSAS STATE UNIVERSITY

Thanks Corporate Partners!



Compliments of CES Corporate Partners

KANSAS STATE UNIVERSITY

All-University Career Fair 2016



September 20, 21 and 22, 2016

KANSAS STATE UNIVERSITY

Berney Family Welcome Center



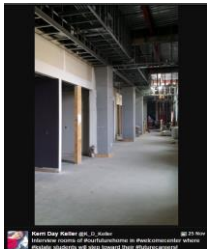
KANSAS STATE UNIVERSITY

BFWC Layout



KANSAS STATE UNIVERSITY

#ourfuturehome



KANSAS STATE UNIVERSITY

New Location and...New Name



??? Career ???
705 N. 17th Street
148 Berney Family Welcome Center
Manhattan, KS 66506
785-532-6506

KANSAS STATE
UNIVERSITY

Spring 2016

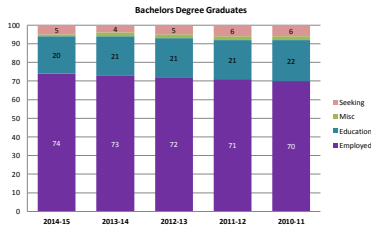
Agri-Industry Career Fair – January 27, 2016 (NDI January 28)
Engineering Career Fair – February 9 & 10, 2016 (NDI February 10 & 11)
Business & Hospitality Career Fair – February 23, 2016 (NDI February 24)
Education On-Campus Interviews – March 7, 2016
Design Expo – March 4, 2016
K-State Open House – April 16, 2016
Moving to BFWC – May 16-27, 2016



<http://www.k-state.edu/calendar/>

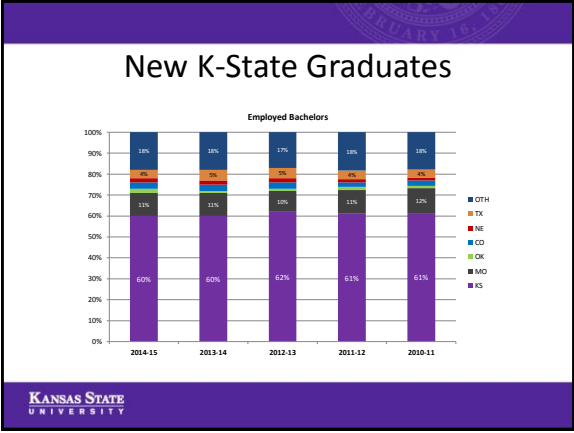
KANSAS STATE
UNIVERSITY

Class of 2014-15



82% Knowledge Rate (3203/3892)

KANSAS STATE
UNIVERSITY



Top Corporate Employers 2014-15

BLACK & VEATCH
BURNS & MCDONNELL
CARGILL
CERNER CORPORATION
CONOCOPHILLIPS
GARMIN
GTM SPORTSWEAR
HONEYWELL

KIEWIT
KOCH INDUSTRIES
NETSMART
PEPSICO
PHILLIPS 66
SCHENK PROCESS
TEXTRON
WESTAR

Based on bachelor degree hires only

KANSAS STATE UNIVERSITY

Featured Presentation



Dr. Robert Shindell, Intern Bridge
Tips for Total Internship Management

KANSAS STATE UNIVERSITY

Future dates to note

Summer 2016

- CES Employer Advisory Board Meeting – July 15, 2016

Fall 2016

- Part-time Opportunities Fair – August 25, 2016 at K-State Student Union
- All-University Career Fair – September 20, 21 and 22, 2016 at Bramlage Coliseum
- On-Campus Interviews – Beginning October 1, 2016



KANSAS STATE
UNIVERSITY



Career and Employment Services

Guiding You from College to Career

Kansas State University



<http://www.k-state.edu/ces/conference/employeradvisoryboard.html>

Thank you!

KANSAS STATE
UNIVERSITY
