


Career and Employment Services
Guiding You from College to Career
 Kansas State University

CES Employer Advisory Board



Welcome to today's virtual meeting.....

- The telephone access number is **785-395-0828**
- Access Code: 1691#
- Please MUTE your phone using *6
- We will begin in just a few minutes
- If you are having any **technical problems**, call 785-532-1691.


KANSAS STATE UNIVERSITY

Today's Agenda

10:00-10:30am	Welcome and introductions	
10:30-10:45am	Highlights from Fall 2014	
10:45-11:00am	What's ahead for 2015	
11:00-11:45am	Webinar presentation <i>Recruiting Trends 2014-15</i> Phil Gardner, MSU CERl	
11:45-12:00pm	Wrap-up	

KANSAS STATE UNIVERSITY

Introductory Poll



Jobs and Internships

What was your first job or internship?

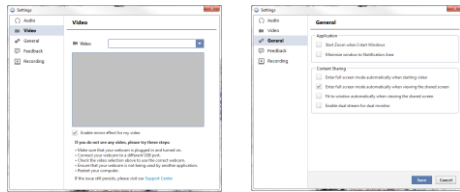
KANSAS STATE UNIVERSITY

Webinar Toolbar



KANSAS STATE
UNIVERSITY

Settings



KANSAS STATE
UNIVERSITY

Employer Attendees

As of 1/16/15

Company/Organization	First name	Last name	Title	Attendance
Black & Veatch	Lustina	Lustina	College Recruiter	On-line
Black & Veatch	Ray	Georges	College Relations Manager	On-line
BNP Paribas	Blatt	Irwin	Bank Human Resources	On-line
Burns & McDonnell	Smith	Rosenbreit	College Recruiter	In-person
Cargill	Leach	Ligon	HR Program Lead	On-line
Carrier Corporation	Jaclyn	Harris	Campus Recruiter	On-line
Chemical Process Chemical	Travis	Copeland	Recruiting Manager	On-line
ConocoPhillips	Carla	Alborn	Advisor, University Relations	On-line
CSX	Altagel	Vermillo	Campus Relations	In-person
Enterprise	Becker	Burney	Talent Acquisition	On-line
Farmers Insurance	Melissa	Bolan	Recruiter	On-line
Farmers Insurance	Emily	Reit	Recruiting Supervisor	On-line
Garmin International	John	Thomas	University Relations Recruiter	On-line
Henry County USD 475	Brigitte	Benjamin	Director of Human Resources	In-person
USPS	Travis	Thomas	Talent Acquisition Specialist	In-person
Kansas Department of Agriculture	Lindsay	Primmington	Assistant Human Resources Director	In-person
Koch Industries	Barry	Stacy	Accounting Manager	On-line
Koch Industries, Inc.	Emily	Alley	College Relations Program Manager - Business	On-line
Koch Industries, Inc.	Andrew	Elk	Manager, College Relations	On-line
KCU Foundation	Melissa	Richards	KCR	In-person
Manufacturing System USD 383	Larry	Loft	Director of Human Resources	In-person
ONCOK	Heather	Agarwal	Recruiter	On-line
Paycom Software	Mindy	Miller	Talent Management Advisor	On-line
Proline 66	Samuel	Parker	Advisor, University Relations	On-line
Redwood	Jennifer	McDonald	Human Capital Generalist	On-line
State Street Corporation	Steve	Green	Talent Acquisition Mgr. VP	On-line
Student Access Center	Andrea	Blair	Director	On-line
Union Pacific Railroad	Jennifer	Bull	Recruitment Manager	On-line

KANSAS STATE
UNIVERSITY

Introductory Poll

Logos: BNSF RAILWAY, BLACK & VEATCH, BURNS & MCDONNELL, STATE STREET, REDGUARD, Cargill, Cerner, Payless, ONEOK, Chevron Phillips, ConocoPhillips, USD 383, KOCH INDUSTRIES INC., Kansas, G, USD 383, GARMIN, DST, FARMERS.

Jobs and internships

What was your first job or internship?

KANSAS STATE UNIVERSITY

K-State Attendees

Anthony Ybarra, Employer Relations Coordinator
 Andrew Kohls, CES Career Development Coordinator
 Angela Hayes, CES Asst Dir, Grad Students & Alumni
 Quantrell Willis, CES Asst Dir, Arts & Sciences
 Anne DeLuca, CES Asst Dir, Engineering
 Mary Ellen Barkley, CES Asst Dir, Agriculture & Vet Med
 Pat Hudgins, Assoc Dir, Education
 Kevin Mokhtarian, CES Assoc Dir, Business
 Kerri Day Keller, CES Director
 Andrea Blais, Student Access Center
 Mitzi Richards, Sr Director of Corporate Relations

anthonyy@ksu.edu
 andrewkohls@ksu.edu
 angelagh@ksu.edu
 qwillis@ksu.edu
 ajdeluca@ksu.edu
 meabark@ksu.edu
 phudgins@ksu.edu
 kevinm@ksu.edu
 kdkeller@ksu.edu
 andreab@ksu.edu
 mitzir@found.ksu.edu

KANSAS STATE UNIVERSITY

CES by the Numbers...

4.7.....Student rating of career advising (5.0)
 6.....CES affiliated Career Fairs
 93.....% of graduates employed or enrolled in additional education six months out
 454.....Presentations for students
 566.....Employers recruiting on campus
 6,966.....Students who attended Career Fairs
 10,825.....Jobs and internships listed online
 10,839...Actlvated! K-Staters
 13,792...Participants in CES presentations

Based on data collected 2013-14

Career and Employment Services
 Guiding You from College to Career
 Kansas State University

KANSAS STATE UNIVERSITY

Fall 2014 Highlights

	Fall 2014		Fall 2013
AUCF employers	320	↑	296
AUCF students	4467	↑	3898
Presentations	209	★	234
To participants	7592	↓	8139
Appointments	1311	↓	1446
Walk ins	710	★	730
Activations	7109	↓	7966
Corporate Partners	24	↑	18

KANSAS STATE
UNIVERSITY

Backyard BBQ 2014

Career and Employment Services

Backyard BBQ

Wednesday, Aug. 27

11 am - 3:30 pm

East Station Lawn

Enjoy a FREE lunch on us!

Activate your CES account and receive a FREE t-shirt.

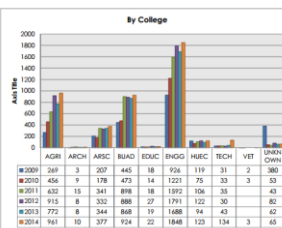
CES Backyard BBQ sponsored by

ConocoPhillips



KANSAS STATE
UNIVERSITY

All-University Career Fair



KANSAS STATE
UNIVERSITY

All-University Career Fair

Kerr Day Keller @K_D_Keller · Sep 23
Thank you @ksu_CES Corporate Partners for keeping @KState students fueled today and tomorrow! #AUCF



KANSAS STATE
UNIVERSITY

Welcome Center Groundbreaking

Kerr Day Keller @K_D_Keller · Sep 19
Welcome to the @KState Welcome Center and future home of @ksu_CES!



KANSAS STATE
UNIVERSITY

Welcome Center



KANSAS STATE
UNIVERSITY

Spring 2015

Agri-Industry Career Fair – January 28, 2015 (NDI January 29)
 Engineering Career Fair – February 10 & 11, 2015 (NDI February 11 & 12)
 Business & Hospitality Career Fair – February 25, 2014 (NDI February 26)
 Education On-Campus Interviews – March 2, 2015
 Design Expo – March 9, 2015



<http://www.k-state.edu/calendar/>

KANSAS STATE
UNIVERSITY

NACE External Review



Leigh Turner
Texas A&M



Gail Rooney
U of Illinois

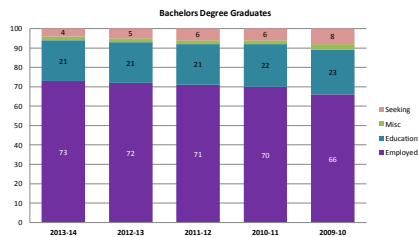


Tim Luzader
Purdue U

Team Visit to K-State
May 18 and 19, 2015

KANSAS STATE
UNIVERSITY

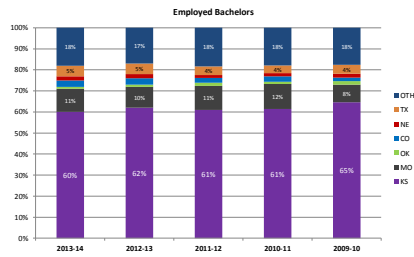
Class of 2013-14



82% Knowledge Rate (3130/3819)

KANSAS STATE
UNIVERSITY

New K-State Graduates



KANSAS STATE
UNIVERSITY

Top Corporate Employers 2013-14

ARDENT MILLS
BURNS & MCDONNELL
CARGILL
CERNER CORPORATION
CIVICPLUS
CONOCOPHILLIPS
EN ENGINEERING
GARMIN INTERNATIONAL
GTM SPORTSWEAR
HOSPIRA

KOCH INDUSTRIES INC & AFFILIATES
M-E ENGINEERING
NETSMART
PAYLESS SHOESOURCE
PEPSICO
PHILLIPS 66
RTS RYAN TRANSPORTATION
STATE STREET
TARGET
TEXTRON

Based on bachelor degree hires only

KANSAS STATE
UNIVERSITY

Thanks Corporate Partners!



KANSAS STATE
UNIVERSITY

Featured Presentation



Dr. Phil Gardner, Collegiate Employment Research Institute, MSU
Recruiting Trends 2014-15

KANSAS STATE
UNIVERSITY

Future dates to note

Summer 2015

- CES Employer Advisory Board Meeting – July 17, 2015

Fall 2015

- Part-time Opportunities Fair – August 27, 2015 at K-State Student Union
- All-University Career Fair – September 22 and 23, 2015 at Bramlage Coliseum
- On-Campus Interviews – Beginning October 1, 2015



KANSAS STATE
UNIVERSITY



Career and Employment Services

Guiding You from College to Career

Kansas State University



<http://www.k-state.edu/ces/conference/employeradvisoryboard.html>

Thank you!

KANSAS STATE
UNIVERSITY
