

# Celebrating a Legacy: K-State's Memorial Stadium



Memorial Stadium, 1933



Memorial Stadium, 2012

17 July 2015

Career & Employment Services  
Employer Advisory Board Meeting  
Cliff Hight, University Archivist

# Presentation outline

- Previous athletic fields
- Historical background for building stadium
- Construction of it
- Highlights over the decades
- Recent developments
- Q&A time

# Previous athletic fields

- Students played as early as 1887, unknown location
- Student teams played in 1892, “City Park”

## THE INDUSTRIALIST.

NOVEMBER 5, 1887.]

The Library last week received two volumes of the History of Woman Suffrage as a donation from Miss Susan B. Anthony. This completes the set of three volumes.

Some thirty students indulged in a game of foot-ball on Friday afternoon. It is to be hoped that our students have the good sense to play even foot-ball without violence; but the game as sometimes played is next to barbarism. One sprained ankle was carried from the field yesterday.

An interesting game of foot-ball between First and Second-year teams was witnessed by a large number of students at the City Park yesterday afternoon. After a hard-fought contest between the evenly matched sides, the game resulted in a tie of four points. Following is a list of players and positions:—

SECOND-YEARS.	POSITION.	FIRST-YEARS.
C. H. Paul .....	Full back .....	F. M. Aiman
B. M. Brown .....	Right half back .....	L. P. Holland
E. R. Farwell .....	Left half back .....	E. Poston
A. D. Benson .....	Quarter back .....	B. W. Vickery
F. A. Dawley .....	Center rush .....	W. S. Forsythe
W. H. Painter .....	Right guard .....	C. Lyon
B. W. Conrad .....	Left guard .....	F. B. Dodds
G. Dial .....	Right end rush .....	R. W. Henney
C. A. Johnson .....	Left end rush .....	R. R. Forsythe
F. J. Smith .....	Right tackle .....	C. N. Kenyon
J. V. Patten .....	Left tackle .....	W. C. Phillips

*Industrialist*, 3 December 1892



## Previous athletic fields, II

- First team supported by faculty, 1894
- First African-American athlete, Charles Groves, 1903



Football team, 1894



Football team (Groves in upper middle), 1903

## Previous athletic fields, III

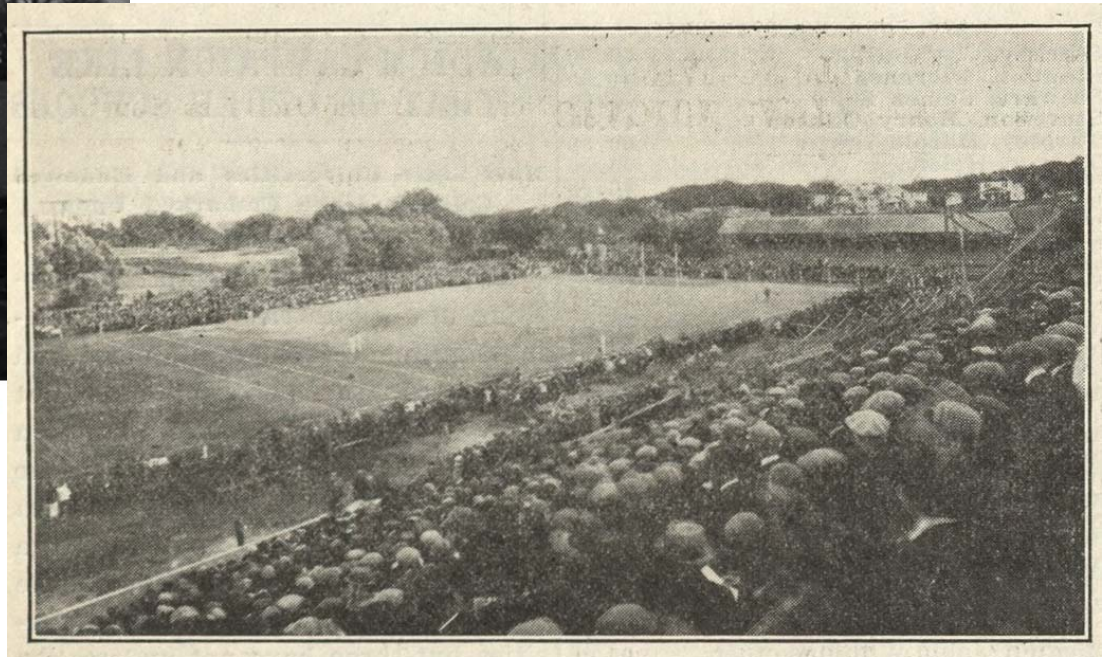
- Athletic field at present-day Bluemont Elementary
- Moved to present-day Alumni Center



Baseball game at athletic field, 1910



Football players Harvey Roots and Jack Gingery at athletic field, 1909



Scene of K-State vs. KU game from grandstand



## Previous athletic fields, IV



K-State (in striped sleeves) vs. KU, 1915 or 1917

# Historical background



Army vs. Navy at Polo Grounds (42,000 attended), 1913

## Historical background, II



Memorial to K-Staters who died in World War I



# Building the stadium



President William Jardine



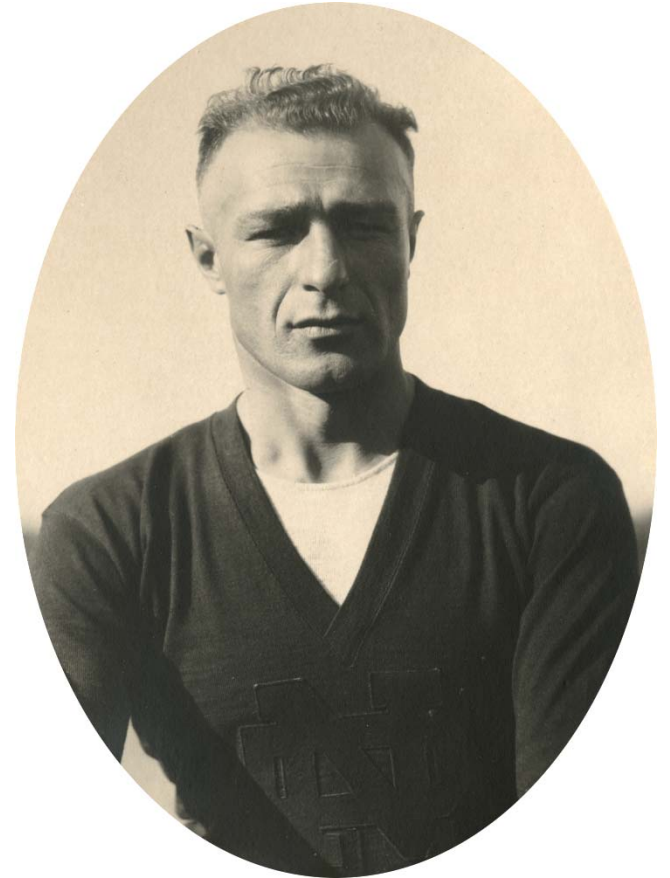
Julius Willard

Right: Mike Ahearn (R)  
& Phog Allen (L)



## Building the stadium, II

- Memorial Stadium Corporation
  - To raise funds
  - To make contracts
  - To pay for construction
- Fundraising
  - Students pledged \$40 each
  - Faculty gave sliding percentage of salary (2.6%–5%)
  - Students & faculty gave \$157,000
  - Community gave \$62,500

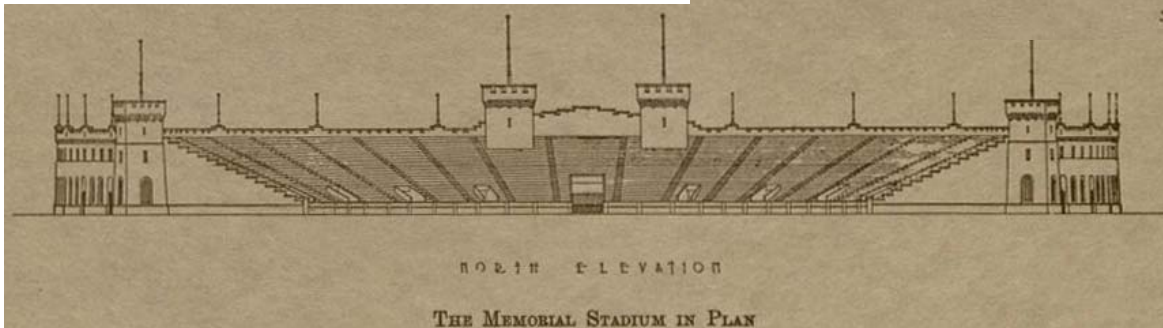


Coach Charles Bachman

# Building the stadium, III



Drawings of new stadium in various forms





## Building the stadium, IV



Status of construction on day of K-State vs. Washburn game, 1922

# Building the stadium, V



Under construction during football season, 1922

## Building the stadium, VI



Construction of east side of stadium, 1924

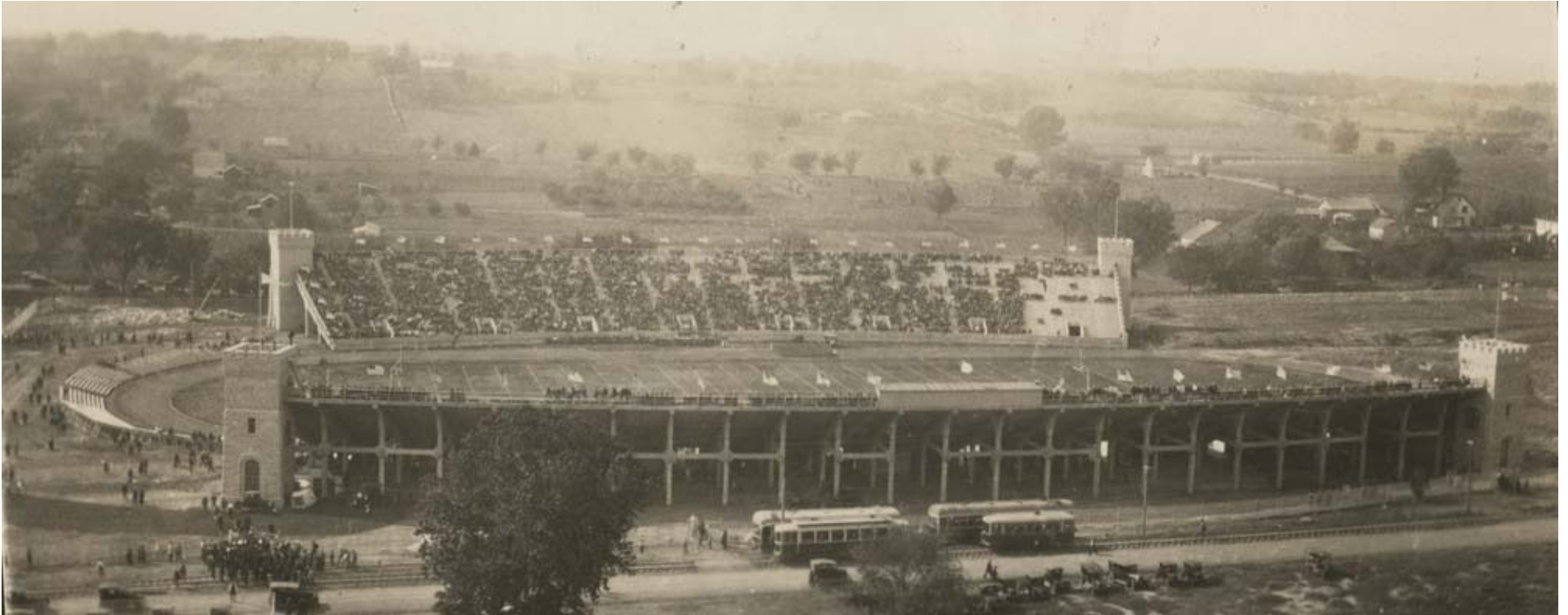


## Building the stadium, VII



Enclosing east side of stadium, February 1928

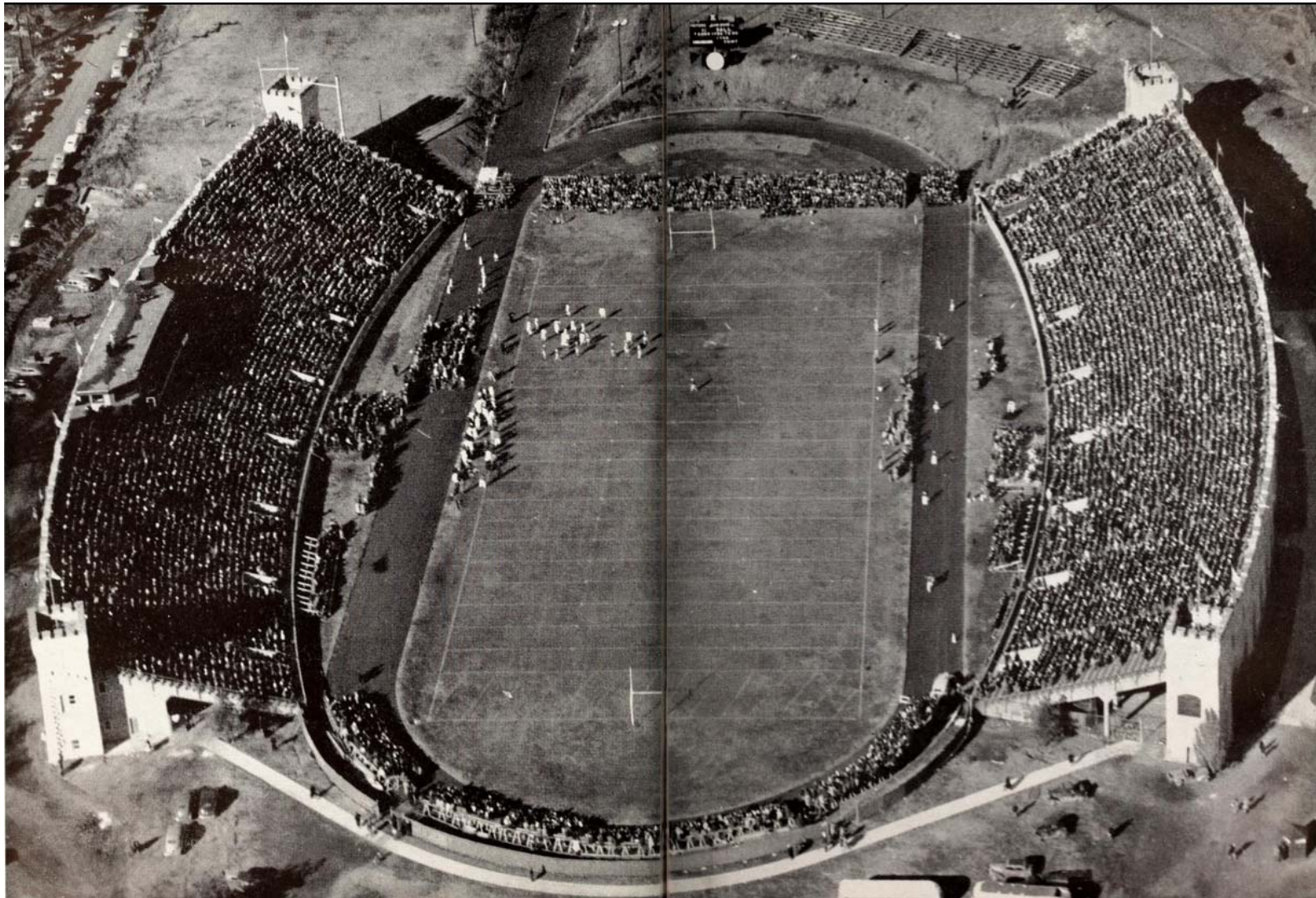
# Highlights



Streetcars on 17<sup>th</sup> Street and east side of stadium not enclosed on game day, 1924



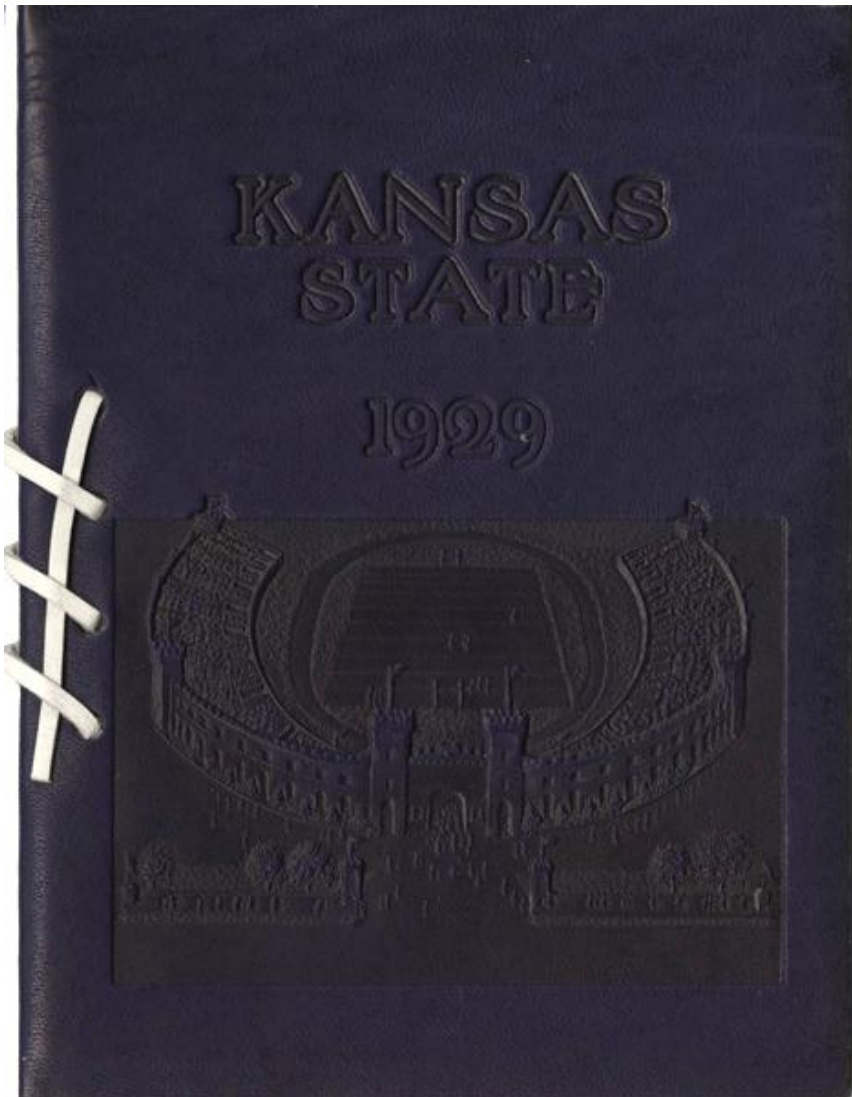
# Highlights, II



From 1947 *Royal Purple*



# Highlights, III



Commencement, 1968

1929 Commencement program

# Highlights, IV



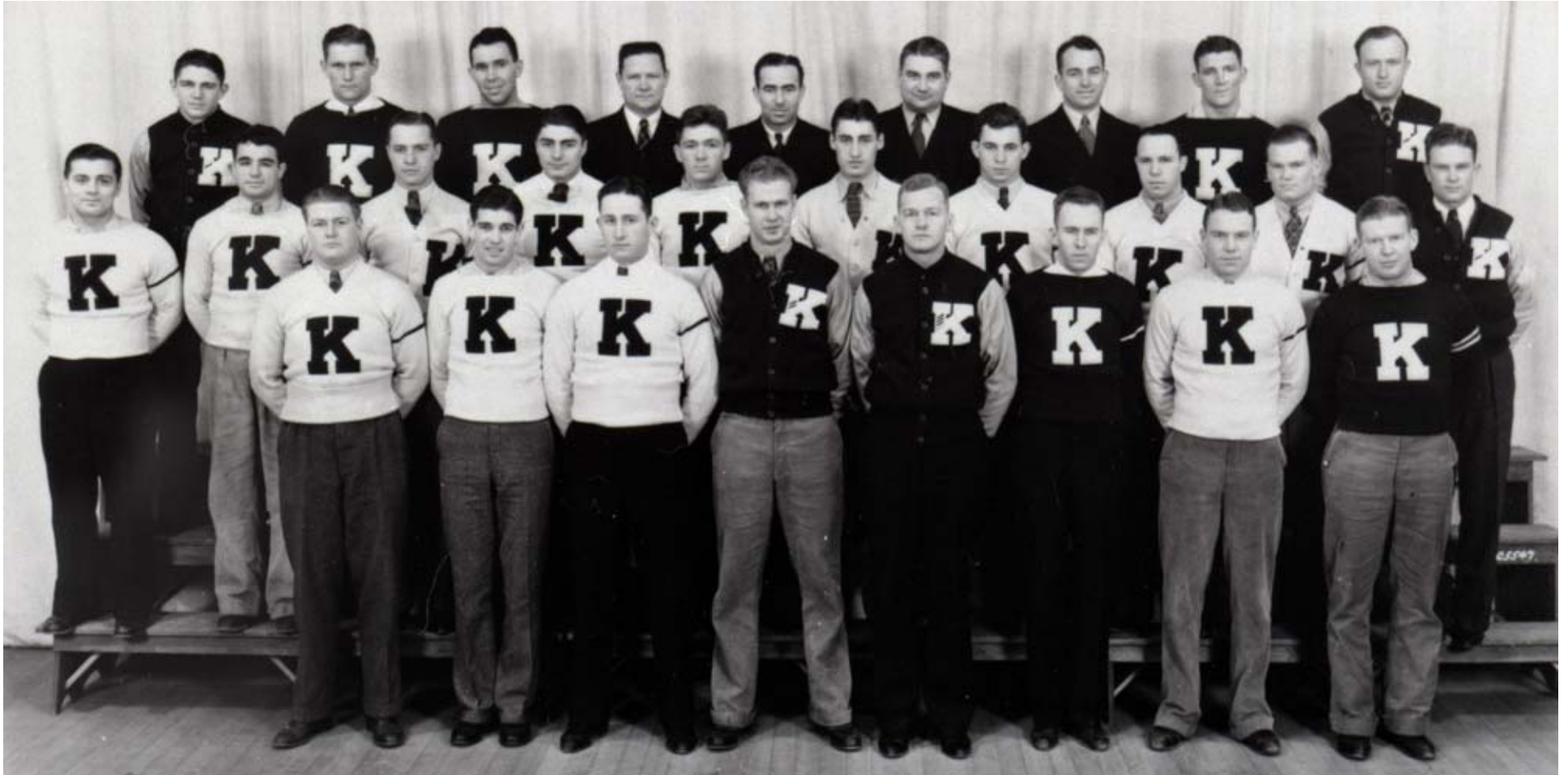
Above: 1924 K-State vs. KU game

Below: Game action





# Highlights, V



First team to be Big 6 Conference champions, 1934



# Highlights, VI



Football game vs. Missouri, 12 October 1946

# Highlights, VII



Verly Switzer evading a tackler, 1953



# Highlights, VIII



Homecoming game vs. KU, 31 October 1964



# Highlights, IX



Cheerleaders, 1964

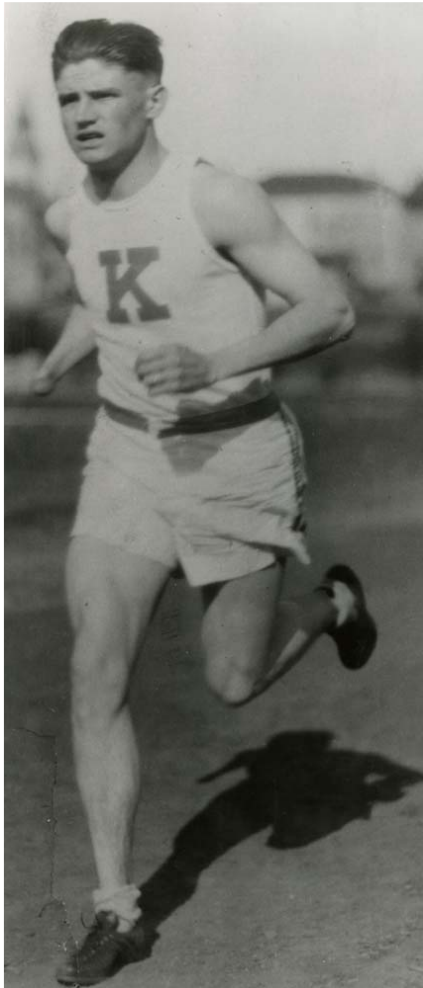


# Highlights, X



Aerial view, October 1965

# Highlights, XI



Ray Watson, notice his missing right hand in left image



Ivan Riley



Ward Haylett & Thane Baker



# Highlights, XII



Game of pushball during Ag Fair, 1932

# Highlights, XIII

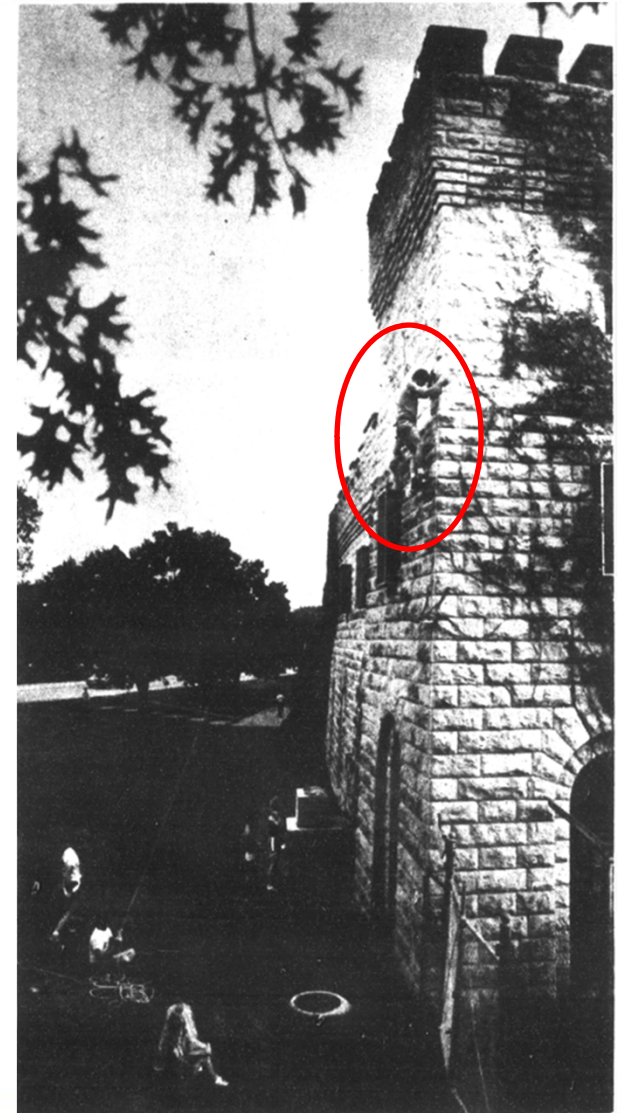


New stadium construction, 1968



## Highlights, XIV

- Activities since football left
  - Band director workshops
  - Purple Masque Theatre
  - Pottery gallery
  - Track and field (through 1972)
  - Numerous club sports (soccer, rugby, etc.)
  - Campus offices
  - Buildering (at right, 1982)
  - Marching band practices





# Highlights, XV



Homecoming bonfire at Memorial Stadium, 1989

# Highlights, XVI



From *Collegian* story about pillow fight, 27 September 2004



# Recent developments







Thanks!

Questions?

Library: [www.lib.k-state.edu](http://www.lib.k-state.edu)

Special Collections: [www.lib.k-state.edu/special-collections](http://www.lib.k-state.edu/special-collections)

My email: [chight@ksu.edu](mailto:chight@ksu.edu)