

Career and Employment Services

Guiding You from College to Career

Kansas State University

CES Employer Advisory Board



Welcome to today's virtual meeting.....

- The telephone access number is **785-395-0828**
- Access Code: 1691
- Please MUTE your phone using *6
- We will begin in just a few minutes
- If you are having any **technical problems**, call 785-532-1691.

Today's agenda

10:00-10:15am Welcome and overview

10:15-10:30am Highlights of Fall 2010

10:30-11:00am What's up for 2011?

11:00-11:45am Webinar presentation

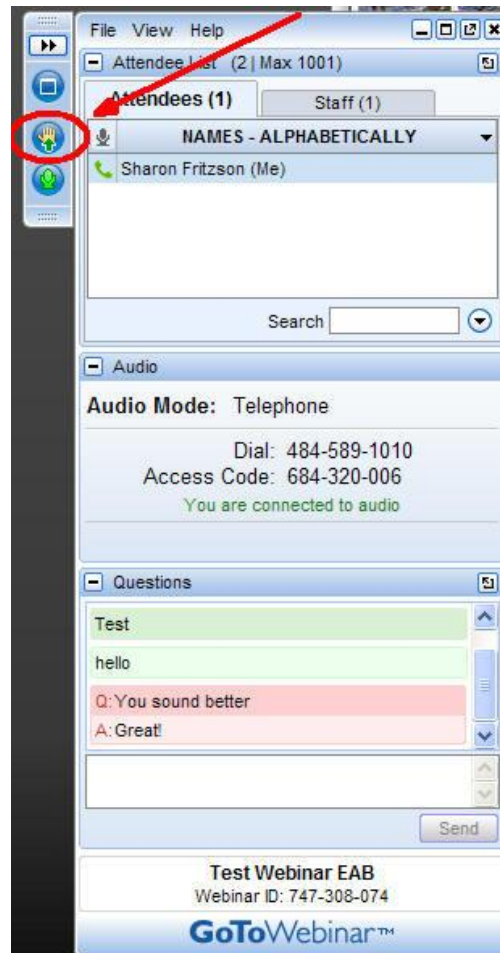
Recruiting Trends 2010-2011

Dr. Phil Gardner, MSU CERI

11:45-12:00pm Wrap-up



Webinar toolbar



Employer attendees

Laci	Adams	Cargill	laci_adams@cargill.com
Elise	Alft	Perceptive Software, HR Generalist	elise.alft@perceptivesoftware.com
Mallory	Ayers	GTM Sportswear, HR Generalist	mallory.ayers@igtm.com
Don	Becker	Commerce Bank, AVP Student Banking	don.becker@commercebank.com
Joe	Burke	Hy-Vee, Retail Recruiting Specialist	jburke@hy-vee.com
Cynthia	Cason	IRS, Program Manager	cynthia.p.cason@irs.gov
Matthew	Chase	Enterprise Rent-a-Car, Talent Acquisition Supervisor	Matthew.j.chase@erac.com
Larry	Doll	Manhattan-Ogden USD 383, Director of Human Resources	larryd@manhattan.k12.ks.us
Andrante	Etheridge	Koch Industries, Recruiting Manager	andrante.etheridge@kochind.com
Bret	Fischer	State Street Corporation, Talent Acquisition Consultant	bfischer@statestreet.com
Lynette	Fleck	ConocoPhillips, Supervisor University Recruiting	Lynette.s.fleck@conocophillips.com
Terra	Garden	Black & Veatch, Recruiter	gardentl@bv.com
Sandy	Hacker	ConocoPhillips, Recruiting and Staffing Coordinator	Sandy.k.hacker@conocophillips.com
Clark	Ingram	GTM Sportswear, Vice President of Human Resources	clark.ingram@igtm.com
Sarah	Martin	Garmin International, College Relations Recruiter	sarah.martin@garmin.com
Ke'Lan	Mitchell	Internal Revenue Service, Recruiter	kelan.mitchell2@irs.gov
Chesla	Morgan	ConocoPhillips, University Advisor	chesla.morgan@conocophillips.com
Jaime	Newman	Spirit AeroSystems, College Recruiter	jaime.j.coronadonewman@spiritaero.com
Brady	Nolan	Cerner, Recruiter	brady.nolan@cerner.com
John	O'Hara	ConocoPhillips, Supervisor Revenue/Regulatory Accounting	oharajm@conocophillips.com
Connie	Pfaff-Eickhoff	GTM Sportswear	connie.pfaff-eickhof@igtm.com
Julie	Shapiro	Burns & McDonnell, College Relations Specialist	jshapiro@burnsmcd.com
Jennifer	Vines	ExxonMobil, Project Services Area Supervisor	jennifer.vines@exxonmobil.com
Kellie	Wilson	Bartlett and Company, Recruiter	k.wilson@bartlett-grain.com
Johnny	Witt	IRS, Director	johnny.witt@irs.gov

Give us a shout



- Your company motto or tagline

K-State attendees

Mary Ellen Barkley, CES Asst Dir, Ag & Human Ecology

mebark@ksu.edu

Jacqui Gatson, CES Asst Dir, Engineering & STEM

jcooper3@ksu.edu

Dana Nordyke, CES Career Development Coordinator

nordyke@ksu.edu

Karl Kandt, CES Asst Dir, Arts & Sciences

kkandt@ksu.edu

LaToya Farris, CES Asst Dir, Education & Internships

latoyaf@ksu.edu

Kerri Keller, CES Director

kdkeller@ksu.edu

Angela Hayes, Alumni Career Services Consultant

ahayes@k-state.com

Mitzi Richards, Sr Director of Corporate Relations

mitzir@found.ksu.edu

Dr. Pat Bosco, Vice President of Student Life

bosco@ksu.edu

Dr. Phil Gardner, Director CERI

gardnerp@msu.edu



Fall 2010 highlights



Fall 2010 highlights

- Students
- Employers
- Faculty/staff
- Alumni



Top employers 2009-10

Top Corporate Employers

ADM - ARCHER DANIELS MIDLAND*
ARUP CONSULTING ENGINEERS
BLACK & VEATCH*
BLUEVILLE NURSERY
BURNS & MCDONNELL*
CARGILL*
CENTRAL NATIONAL BANK
CERNER CORORATION*
COMMERCE BANK
CONOCOPHILLIPS*
CONAGRA
DUNCAN AVIATION
EXXONMOBIL*
GTM SPORTSWEAR*
FARMERS INSURANCE
HALLIBURTON
HENDERSON ENGINEERS INC*
KOCH INDUSTRIES*
PEPSICO / FRITO-LAY / QUAKER FOODS
SCHLUMBERGER
TARGET
WAL-MART

Top Nonprofit/Govt Employers

BLUE VALLEY USD 229*
GARDNER-EDGERTON USD 231*
GEARY COUNTY USD 475*
KVC BEHAVIORAL HEALTHCARE
KS DEPT OF SOCIAL REHAB SVCS
MANHATTAN-OGDEN USD 383*
MERCY REGIONAL HEALTH CENTER
PEACE CORPS*
RILEY COUNTY POLICE DEPT
SHAWNEE MISSION USD 512*
TOPEKA USD 501
US DEPT OF AGRICULTURE
US AIR FORCE*
US ARMY*
WICHITA USD 259*

Based on bachelor degree hires only – 5 or more graduates

** Indicates employer in top 20 previous year*

Thanks Corporate Partners!

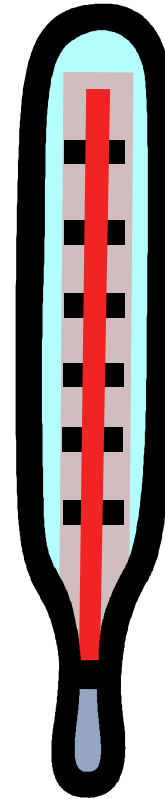


STATE STREET.



What's up for 2011?

- This summer I predicted a _____ recruiting outlook.
- Currently it's _____.
- It has been most impacted by _____.



___ HOT ___

___ LUKEWARM ___

___ COLD ___

Featured presentation



Dr. Phil Gardner, Director Collegiate Employment Research Institute

Recruiting Trends 2010-2011

Future dates to note

Spring 2011

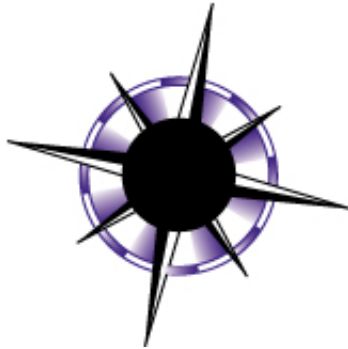
- Agri-Industry Career Fair – January 26, 2011 (NDI January 27)
- Engineering Career Fair – February 8, 2011 (NDI February 9)
- Business & Hospitality Career Fair – February 22, 2011 (NDI February 23)
- Education On-Campus Interviews – March 1, 2011
- Common Good Career Fair – March 2, 2011 (NDI March 3)

Summer 2011

- CES Employer Advisory Board Meeting – Friday, July 22, 2011

Fall 2011

- Part-Time Opportunities Career Fair – August 25, 2011
- All University Career Fair – September 20 & 20, 2011 (NDI September 21 & 22)
- On-Campus Interviews - Beginning October 3, 2011
- Education Career Fair – November 8, 2011



Career and Employment Services

Guiding You from College to Career

Kansas State University



Thank you!