

Employer Advisory Board Meeting

Berney Family Welcome Center – Davis Theater
Friday, July 14, 2017

- | | |
|----------------|--|
| 10:00-10:30 AM | Overview and Introductions
<i>Kerri Day Keller, Career Center Director</i> <ul style="list-style-type: none">• Welcome from Jack Ayres, SGA President |
| 10:30-11:00 AM | Spotlight: Developing and Recruiting K-State Talent <ul style="list-style-type: none">• K-State 360, <i>Trent McGee</i>• Handshake, <i>Anthony YBarra</i> |
| 11:00-11:45 AM | Corporate Engagement the K-State Way
<i>Kent Glasscock, President of KSU Institute for Commercialization</i> |
| 11:45-11:55 AM | Spotlight: Advancing Company Campus Relationships
<i>Mitzi Richards, Corporate Relations</i> |
| 12:00-1:00 PM | Lunch and Networking <ul style="list-style-type: none">• Corporate Partners photo on BFWC plaza |
| 1:00-1:20 PM | Spotlight: Union Station by JPs
<i>Joe Klobasa, K-State Housing and Dining Services</i> |
| 1:30-2:30 PM | Spotlight: Innovative Multicultural and Inclusion Efforts <ul style="list-style-type: none">• Hijab for a Day
<i>Siti Farhiah Abdul Manan</i>• IMHOTEP: K-State's Black Male Initiative
<i>Kimathi Choma and Bryon Williams</i>• Pronouncing Chinese Names
<i>Confucius Institute</i> |
| 2:30-3:00 PM | Wrap up |

Company/Organization	First name	Last name	Corporate Partner 2016-17	Top Employers 2015-16
Archer Daniels Midland	Marcie	Oppold	X	X
Big Lakes	Lori	Feldkamp		
Big Lakes	Lugen	Lutz		
Burns & McDonnell	Matt	Rosentreter	X	X
Cerner Corporation	Katie	Turner	X	X
CivicPlus	James	Johnson		X
Courtyard by Marriott Junction City	Caitlin	Ciucevich		X
Honeywell FM&T	Rachel	Grodsky		X
Koch	Annie	Pfeifer	X	X
Koch	Tanner	Vincent	X	X
Manhattan Area Chamber of Commerce	Trent	Armbrust		
Manhattan/Ogden 383 School District	Andrew	Turner		X
Netsmart	Ashley	DeMond		X
Phillips 66	Mary Jo	Rogers	X	X
State Street	Karen	King	X	X
Textron Aviation	Nicole	Alexander	X	
Union Pacific	Jennifer	Ball	X	

ONLINE

Black & Veatch	Justina	DeLuca	X	
BNSF Railway	Matthew	Wheeler	X	
C.H. Robinson	Cassy	Opitz	X	
Cargill	Josh	Ligon	X	X
Edward Jones	Jim	Krekeler	X	
Freightquote	Jodi	Aanes	X	

K-STATE

Kansas State University Foundation	Mitzi	Richards	Sr Director of Corporate Relations
K-State Olathe	Kimberly	Ramacciotti	Director of Student Services
KSU Institute for Commercialization	Rebecca	Robinson	Director of Economic Development
KSU Institute for Commercialization	Kent	Glasscock	Pres/CEO
K-State Polytechnic	Julie	Rowe	Career Center
K-State Student Government Association	Jack	Ayres	SGA President
K-State Alumni Association	Debra	Rodenbaugh-Schaub	Alumni Career Services Consultant
K-State Arts & Sciences	Kimathi	Choma	Assistant Dean
K-State New Student Services	Emily	Lehning	VP Student Life/ Director NSS
K-State Student Activities & Services	Trent	McGee	360 Program Coordinator
K-State Housing & Dining	Joe	Kolbasa	Operations Manager
K-State Career Center	Kerri	Keller	Executive Director
K-State Career Center	Anthony	YBarra	Employer Relations Coordinator
K-State Career Center	Ashley	Motley	Assistant Director
K-State Career Center	Dana	Nordyke	Assistant Director
K-State Career Center	Jared	Meitler	Assistant Director
K-State Career Center	Kevin	Mokhtarian	Associate Director
K-State Career Center	Pat	Hudgins	Associate Director
K-State Career Center	Andrew	Kohls	Assistant Director
K-State Career Center	Anne	DeLuca	Assistant Director
K-State Career Center	Sharon	Fritzson	Director's Assistant

Degrees Conferred by Program and Level - FY 2017

College	Program Title	Department	Associate's	Bachelor's	Master's	Doctoral
AG	Agribusiness	Agricultural Economics		82	23	
AG	Agricultural Economics	Agricultural Economics		46	7	7
AG	Agronomy	Agronomy		42	12	15
AG	Animal Sciences	Animal Sciences		206	13	5
AG	Agricultural Teacher Education	College of Agriculture Dean's office		19		
AG	Agricultural Technology Management	College of Agriculture Dean's office		21		
AG	Environmental Studies*	College of Agriculture Dean's office		17		
AG	Food Science	College of Agriculture Dean's office		45	46	1
AG	Pre-Veterinary Studies	College of Agriculture Dean's office		17		
AG	Genetics	College of Agriculture Dean's office			3	1
AG	Agricultural Communication/Journalism	Communications		22	8	
AG	Entomology	Entomology				3
AG	Agricultural and Food Products	Grain Science & Industry		36		
AG	Grain Science	Grain Science & Industry			10	7
AG	Horticulture	Horticulture, Forestry & Rec		32	5	1
AG	Parks Management and Conservation	Horticulture, Forestry & Rec		25		
AG	Wildlife/Outdoor Enterprise Management	Horticulture, Forestry & Rec		27		
AG	Plant Pathology	Plant Pathology			1	4
APD	Architecture	Architecture			57	
APD	Architecture -MS	Architecture			7	
APD	Environmental Design	College of Architecture, Plan/Design Dean's Office				
APD	Interior Architecture	Interior Arch & Product Design			18	
APD	Community Development and Planning	Landscape Arch/Reg & Comm Plan			5	
APD	Landscape Architecture	Landscape Arch/Reg & Comm Plan			15	
APD	Regional and Community Planning	Landscape Arch/Reg & Comm Plan			7	
AS	American Ethnic Studies.	American Ethnic Studies		2		
AS	Art	Art		3		
AS	Fine Arts	Art		49	3	
AS	Biochemistry	Biochemistry		15	3	2
AS	Biology	Biology		75	9	8
AS	Microbiology	Biology		29		1
AS	Wildlife Biology	Biology		24		
AS	Chemistry	Chemistry		20	2	11
AS	Clinical Laboratory Science	College of Arts and Sciences Dean's Office		1		
AS	Humanities	College of Arts and Sciences Dean's Office		6		
AS	International Studies*	College of Arts and Sciences Dean's Office		15		
AS	Latin American Studies*	College of Arts and Sciences Dean's Office				
AS	Life Sciences	College of Arts and Sciences Dean's Office		44		
AS	Physical Sciences	College of Arts and Sciences Dean's Office		5		
AS	Social Sciences	College of Arts and Sciences Dean's Office		121		
AS	Communication Studies	Communication Studies		39	6	
AS	Economics	Economics		42	9	
AS	English	English		32	22	
AS	Geography	Geography		11	9	7
AS	Geology	Geology		19	8	
AS	Gender,Women & Sexuality Studies	Gender,Women & Sexuality Studies		5		
AS	History	History		36	2	8
AS	Security Studies	History			17	3
AS	Journalism/Mass Communication	Journalism & Mass Communication		126	4	
AS	Mathematics	Mathematics		21	7	3
AS	Modern Languages	Modern Languages		29	4	
AS	Music Teacher Education	Music		19		
AS	Music	Music, Theatre and Dance		22	16	
AS	Theatre	Music, Theatre and Dance		17	8	
AS	Philosophy	Philosophy		8		
AS	Physics	Physics		11	4	4
AS	Political Science	Political Science		50	5	
AS	Public Administration	Political Science			5	
AS	Psychology	Psychology		102	18	5
AS	Anthropology	Sociology Anthropology & SocWk		13		
AS	Social Work	Sociology Anthropology & SocWk		63		
AS	Sociology	Sociology Anthropology & SocWk		93	6	4
AS	Statistics	Statistics		11	8	

2016-2017 Preliminary - Unofficial counts

Degrees Conferred by Program and Level - FY 2017

College	Program Title	Department	Associate's	Bachelor's	Master's	Doctoral
BA	Accounting	Accounting		106	54	
BA	Business Administration	College of Business Admin Dean's Office			39	
BA	Entrepreneurship	College of Business Admin Dean's Office		47		
BA	General Business	College of Business Admin Dean's Office		24		
BA	Finance	Finance		150		
BA	Management	Management		142		
BA	Management Information Systems	Management		38		
BA	Marketing	Marketing		157		
ED	Art Teacher Education	Curriculum and Instruction		5		
ED	Curriculum and Instruction	Curriculum and Instruction			33	13
ED	Master of Arts in Teaching	Curriculum and Instruction			45	
ED	Elementary Education	Curriculum and Instruction		175		
ED	Secondary Education	Curriculum and Instruction		95		
ED	Adult and Continuing Education	Educational Leadership			76	6
ED	Educational Leadership	Educational Leadership			6	7
ED	Academic Advising	Special Education, Counseling and Student Affairs			69	
ED	Counseling and Student Development	Special Education, Counseling and Student Affairs			40	1
ED	Special Education	Special Education, Counseling and Student Affairs			7	
EN	Architectural Engineering	Architectural Engr & Const Sc		48	11	
EN	Construction Science and Management	Architectural Engr & Const Sc		68		
EN	Agricultural/Biological Engineering**	Biological & Agricultural Engr		28	6	2
EN	Chemical Engineering	Chemical Engineering		54	1	8
EN	Civil Engineering	Civil Engineering		65	19	5
EN	Computer Science	Computing & Information Sci		68	19	4
EN	Information Science	Computing & Information Sci		14		
EN	Software Engineering	Computing & Information Sci			4	
EN	Computer Engineering	Electrical & Computer Engr		26		
EN	Electrical Engineering	Electrical & Computer Engr		60	25	4
EN	Engineering Management	Industrial & Mfg Sys Engr			14	
EN	Industrial Engineering	Industrial & Mfg Sys Engr		48	9	3
EN	Operations Research	Industrial & Mfg Sys Engr			7	
EN	Mechanical Engineering	Mechanical & Nuclear Engr		135	12	3
EN	Nuclear Engineering	Mechanical & Nuclear Engr			1	2
HE	Apparel and Textiles	Apparel Textiles & Interior Design		50	4	
HE	Interior Design	Apparel Textiles & Interior Design		16		
HE	Family and Consumer Sciences education	Coll of Human Ecology Dean's Office		8		
HE	Gerontology*	Coll of Human Ecology Dean's Office		67	5	
HE	Human Ecology	Coll of Human Ecology Dean's Office		6		11
HE	Communication Sciences and Disorders	Family Studies & Human Service		32		
HE	Dietetics	Hospitality Mgmt and Dietetics		63	8	
HE	Hospitality Management	Hospitality Mgmt and Dietetics		52	1	
HE	Athletic Training	Human Nutrition		27		
HE	Human Nutrition	Human Nutrition		66	3	4
HE	Kinesiology	Kinesiology		156	11	
HE	Personal Financial Planning	School of Family Studies and Human Services		16	16	6
HE	Early Childhood Education	School of Family Studies and Human Services		13		
HE	Family and Community Services	School of Family Studies and Human Services			2	
HE	Family Studies and Human Services	School of Family Studies and Human Services		190	39	
TC	Profesional Master of Technology	College of Technology and Aviation Dean's office			5	
TC	Applied Business	Salina Arts Sci & Business	1			
TC	Technology Management	Salina Arts Sci & Business		22		
TC	Aeronautical Technology	Salina Aviation		45		
TC	Aviation Maintenance	Salina Aviation		1		
TC	Professional Pilot	Salina Aviation	1	1		
TC	Engineering Technology	Salina Engineering Technology	12	24		
VM	Veterinary Physiology	Anatomy & Physiology				
VM	Biosciences	Coll of Veterinary Medicine Dean's Office			16	
VM	Pathobiology/Diagnostic Medicine	Diagnostic Medicine Pathobiolog				9
VM	Public Health	Graduate School - Interdisciplinary			30	
Subtotals			14	4223	1049	188
VM	Veterinary Medicine (DVM)	Coll of Veterinary Medicine Dean's Office				112
TOTALS			14	4223	1049	300

* Secondary major in Bachelor's level

** Includes 2 Secondary majors

2016-2017 Preliminary - Unofficial counts

Employer Timeline 2017-2018**June-August**

- Employer registration for All-University Career Fair
- Post jobs and update information in your Career Center Account
- Reserve rooms for on-campus interviews (*Must have 3 weeks notice to reserve your space*)

July 4—University offices closed

Aug. 21—First day of fall semester

Aug. 23—Career Center Cookout—My Career Center Account student activation event

Aug. 24—Part-Time Opportunities Fair

September

Sept. 4—University offices closed

Sept. 19—All-University Career Fair (*Agriculture, Arts & Sciences, Business, Human Ecology*)

Sept. 19—Agriculture Employers Dinner

Sept. 19—College of Business Administration Reception and Dinner

Sept. 19—Management Information Systems (MIS) Reception

Sept. 20—All-University Career Fair (*All majors- This is best for employers considering a wide variety of majors*)

Sept. 20—Engineering Reception and Buffet Dinner

Sept. 20—Polytechnic Campus, College of Technology and Aviation Meet and Greet

Sept. 21—All-University Career Fair (*Engineering and Technology*)

Sept. 20-22—All-University Career Fair Next Day Interviews

October

Oct. 2—Fall on-campus interviews begin/Information sessions

November

Nov. 23-24—University offices closed

December

Dec. 8—Last day of fall semester

Dec. 25-31—University offices closed

January

Jan. 1 —University offices closed

Jan. 16—First day of spring semester

Jan. 24—Agri-Industry Career Fair

Jan. 25—Agri-Industry Career Fair Next Day Interviews

February

Feb. 1—Spring on-campus interviews begin/Information sessions

Feb. 6-7—Engineering Career Fair

Feb. 7-8—Engineering Career Fair Next Day Interviews

Feb. 21—Business Career Fair

Feb. 22—Business Career Fair Next Day Interviews

March

March 2—Design Expo

March 5—Education On-Campus Interviews

March 19-23—Spring Break

May

May 4—Last day of spring semester

May 28—University offices closed



COLLEGE-TO-CAREER SNAPSHOT

2015-2016 BACHELOR'S DEGREE GRADUATES



TOP CORPORATE EMPLOYERS

- 1 Cerner Corporation
- 2 Koch Industries
- 3 Cargill
- 4 Burns & McDonnell
- 5 PepsiCo
- 6 Textron
- 7 Honeywell
- 8 Netsmart Technologies
- 9 Ryan Transportation
- 10 Farmers Insurance
- 11 Enterprise RAC

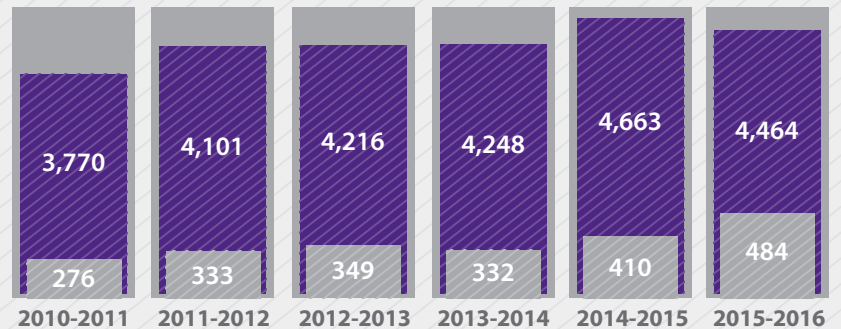


TOP USD EMPLOYERS

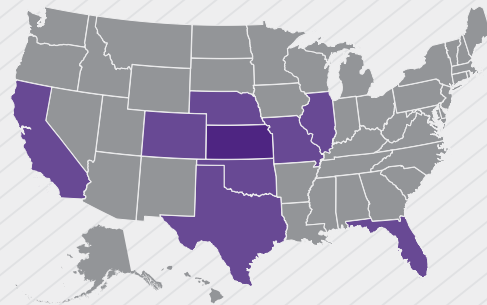
- 1 Geary County 475
- 2 Manhattan-Ogden 383
- 3 Shawnee Mission 512
- 4 Blue Valley 229
- 5 Topeka Public 501



ON-CAMPUS INTERVIEWS



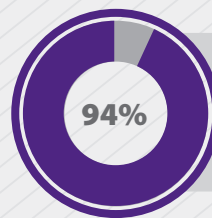
TOP EMPLOYMENT DESTINATIONS



Overseas

TOP CITIES

KC Metro, KS/MO
Manhattan, KS
Wichita, KS
Topeka, KS
Junction City, KS
Salina, KS
Dallas/Ft. Worth, TX
Denver, CO



Percentage of graduates employed or enrolled in graduate or professional school six months after graduation

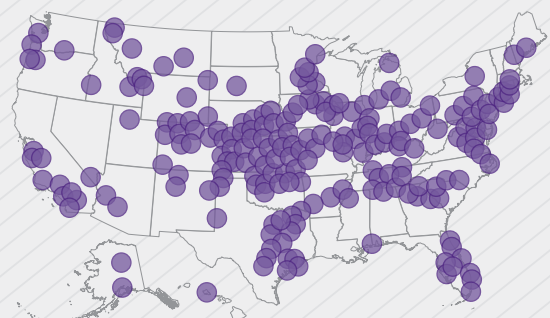


7,573

STUDENTS WHO ATTENDED CAREER FAIRS



INTERNSHIPS IN THE UNITED STATES



KANSAS STATE
UNIVERSITY

Vice President
for Student Life

Prepared with the help of the Career Center

Why #HireAWildcat?

K-State students and graduates are recognized among employers for their top-quality academic preparation, hands-on experience and strong work ethic. These qualities present an unbeatable combination for prospective employers

TOP 50

K-State's 2025 goal to be ranked
among public research universities

250+ Undergraduate programs

110+ Graduate programs

475+ Student organizations

- Students have numerous means to conduct research alongside award-winning faculty.
- Professors include members of the National Academy of Sciences, Regents Distinguished Professors, CASE Professors of the Year and many professional societies.

24,700

K-State students from all 50 states
and over 100 countries

9

Academic Colleges



Agriculture



Architecture, Planning & Design



Arts & Sciences



Business Administration



Education



Engineering



Human Ecology



Technology & Aviation



Veterinary Medicine

3

campuses

Manhattan

Salina

Olathe

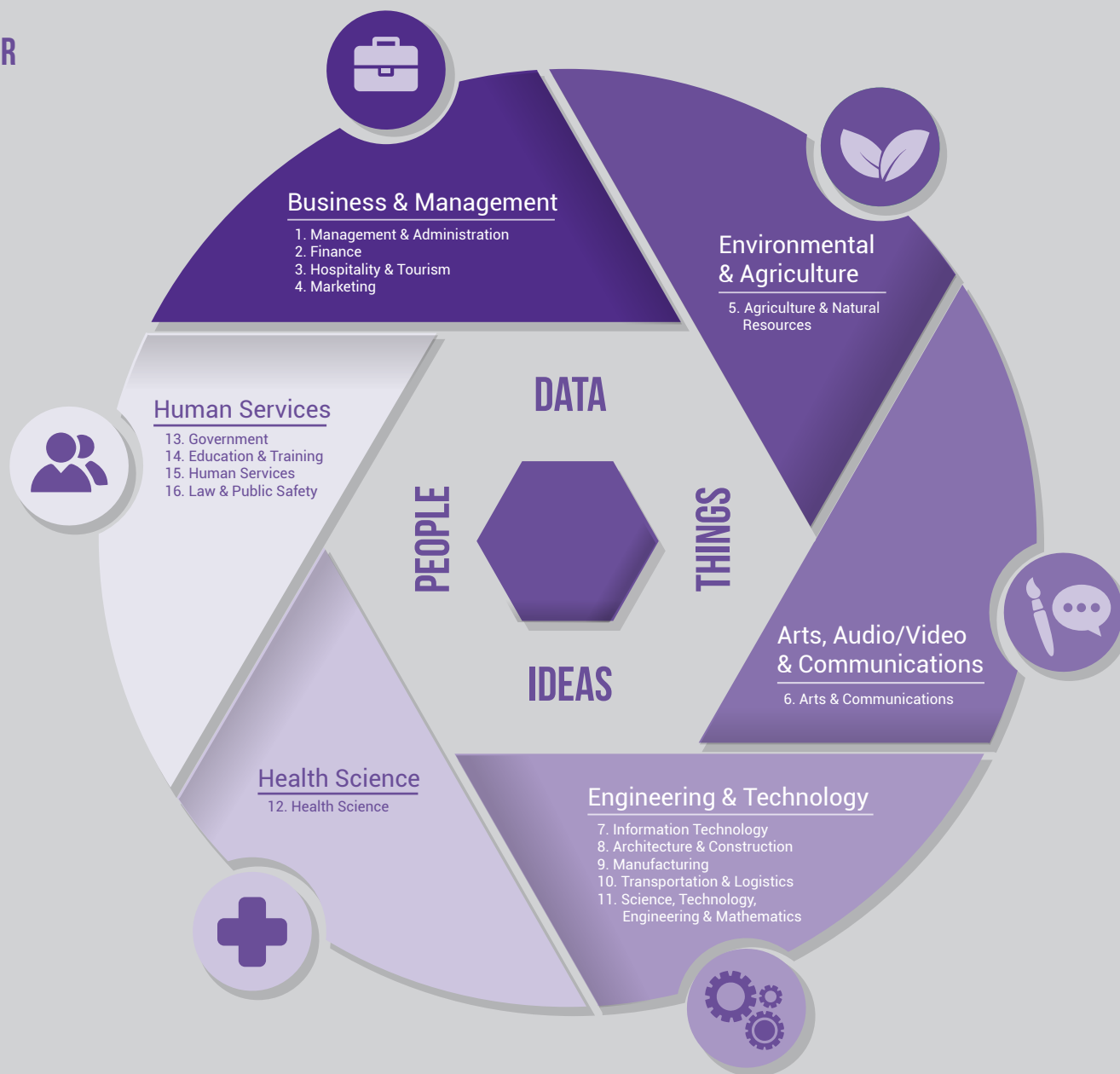
NAVIGATION GUIDE

CONNECTING UNDERGRADUATE PROGRAMS AND CAREER FIELDS

THE CAREER CENTER FACILITATES THE CAREER READINESS OF ALL STUDENTS THROUGHOUT THE K-STATE COMMUNITY.

Match K-State talent to your company's internships, co-ops and part-time or full-time opportunities.

Based on the Kansas Career Cluster model, careers are organized into six broad fields related to primary work tasks. The six fields are then divided into 16 career clusters based on their associated knowledge and abilities.



KANSAS STATE
UNIVERSITY | Career Center

148 Berney Family Welcome Center
705 N. 17th St., Manhattan, KS 66506
(785) 532-6506
careercenter@k-state.edu
k-state.edu/careercenter

K-STATE UNDERGRADUATE PROGRAMS BY CAREER CLUSTER

Color key by college

- | | |
|--|---|
| ■ Agriculture | ■ Education |
| ■ Architecture, Planning & Design | ■ Engineering |
| ■ Arts & Sciences | ■ Human Ecology |
| ■ Business Administration | ■ Technology & Aviation |

1. Management & Administration

- Agribusiness
- Ag. Comm. & Journalism
- Agricultural Economics
- Ag. Technology Mgmt.
- Agronomy
- Business Administration
- Construction Science & Mgmt.
- Economics
- Entrepreneurship
- Finance
- Hospitality Mgmt.
- Human Resource Mgmt.
- Int. Business Certificate
- Management
- Mgmt. Information Systems
- Ops. & Supply Chain Mgmt.
- Psychological Studies
- Wildlife & Outdoor Mgmt.

2. Finance

- Accounting
- Agribusiness
- Agricultural Economics
- Business Administration
- Economics
- Finance
- Personal Financial Planning
- Statistics

3. Hospitality & Tourism

- Entrepreneurship
- Golf Course Mgmt.
- Hospitality Mgmt.
- Marketing
- Park Mgmt. & Conservation
- Wildlife & Outdoor Mgmt.

4. Marketing

- Advertising
- Agribusiness
- Ag. Comm. & Journalism
- Apparel Marketing
- Business Administration
- Int. Business Certificate
- Journalism & Mass Comm.
- Marketing
- Public Relations

5. Agriculture & Natural Resources

- Agribusiness
- Agricultural Economics
- Ag. Technology Mgmt.
- Agronomy
- Animal Science & Industry
- Bakery Science & Mgmt.
- Biochemistry
- Biological Systems Eng.
- Biology
- Chemistry
- Civil Engineering
- Dietetics
- Feed Science Mgmt.
- Fisheries & Wildlife Biology
- Food Science & Industry
- Geography
- Geology
- Golf Course Mgmt.
- Horticulture
- Human Nutrition
- Kinesiology
- Life Sciences
- Mathematics
- Microbiology
- Milling Science & Mgmt.
- Natural Resource/Environ. Sci.
- Park Mgmt. & Conservation
- Physical Science
- Physics
- Pre-Veterinary Medicine
- Sports Turf Mgmt.
- Wildlife & Outdoor Mgmt.
- Zoology

6. Arts & Communications

- Advertising
- Ag. Comm. & Journalism
- Art
- Comm. Sciences & Disorders
- Communication Studies
- Digital Media
- English
- French
- German
- Graphic Design
- Interior Design
- International Studies
- Journalism & Mass Comm.

• Landscape Design

- Music
- Photography
- Park Mgmt. & Conservation
- Print & Electronic Journalism
- Public Relations
- Spanish
- Theatre
- Wildlife & Outdoor Mgmt.

7. Information Technology

- Ag. Technology Mgmt.
- Computer Engineering
- Computer Science
- Computer Systems Tech.
- Electronic & Comp. Eng. Tech.
- Mgmt. Information Systems

8. Architecture & Construction

- Architectural Engineering
- Business Administration
- Civil Engineering
- Construction Science & Mgmt.
- Interior Design
- Landscape Design

9. Manufacturing

- Ag. Technology Mgmt.
- Bakery Science & Mgmt.
- Feed Science & Mgmt.
- Food Science & Industry
- Industrial Engineering
- Mechanical Engineering Tech.
- Milling Science & Mgmt.

10. Transportation & Logistics

- Aviation Maintenance Mgmt.
- Airport Mgmt.
- Civil Engineering
- Helicopter Pilot
- Ops. & Supply Chain Mgmt.
- Professional Pilot

11. Science, Technology, Engineering, & Mathematics

- Ag. Technology Mgmt.
- Agronomy
- Animal Science & Industry

- Architectural Engineering
- Aviation Maintenance Mgmt.
- Bakery Science & Mgmt.
- Biological Systems Eng.
- Chemical Engineering
- Civil Engineering
- Computer Science
- Computer Engineering
- Construction Sci & Mgmt.
- Electrical Engineering
- Engineering
- Food Science & Industry
- Horticulture
- Industrial Engineering
- Mathematics
- Mechanical Engineering Tech.
- Mechanical & Nuclear Eng.
- Physics
- Technology Mgmt.
- Unmanned Aerial Systems

12. Health Science

- Animal Science & Industry
- Athletic Training
- Biology
- Clinical Laboratory Sciences
- Comm. Sciences & Disorders
- Dietetics
- Gerontology
- Human Nutrition
- Kinesiology
- Nutritional Sciences
- Pre-Chiropractic Medicine
- Pre-Dentistry & Dental Hyg.
- Pre-Health Info. Mgmt.
- Pre-Medicine
- Pre-Nursing
- Pre-Occupational Therapy
- Pre-Optometry
- Pre-Pharmacy
- Pre-Physical Therapy
- Pre-Physicians Assistant
- Pre-Psychology
- Pre-Respiratory Therapy
- Pre-Veterinary Medicine
- Public Health Nutrition

13. Government

- Agricultural Economics

- American Ethnic Studies
- Economics
- History
- Latin American Studies
- Park Mgmt. & Conservation
- Political Science
- Social Sciences
- Sociology/Criminology

14. Education & Training

- Agricultural Education
- Early Childhood Education
- Elementary Education
- Mathematics
- Music
- Secondary Education
- Special Education

15. Human Services

- Agricultural Education
- Anthropology
- Entrepreneurship
- Family Studies & Human Svcs.
- Gender, Women & Sexuality Stu.
- Horticulture
- Hospitality Mgmt.
- Human Ecology
- Philosophy
- Political Science
- Pre-Law
- Park Mgmt. & Conservation
- Psychological Studies
- Social Sciences
- Social Work
- Sociology/Criminology

16. Law & Public Safety

- Animal Sciences & Industry
- Anthropology
- Food Science & Industry
- Gender, Women & Sexuality Stu.
- History
- Humanities
- Philosophy
- Political Science
- Psychological Studies
- Social Science
- Sociology/Criminology

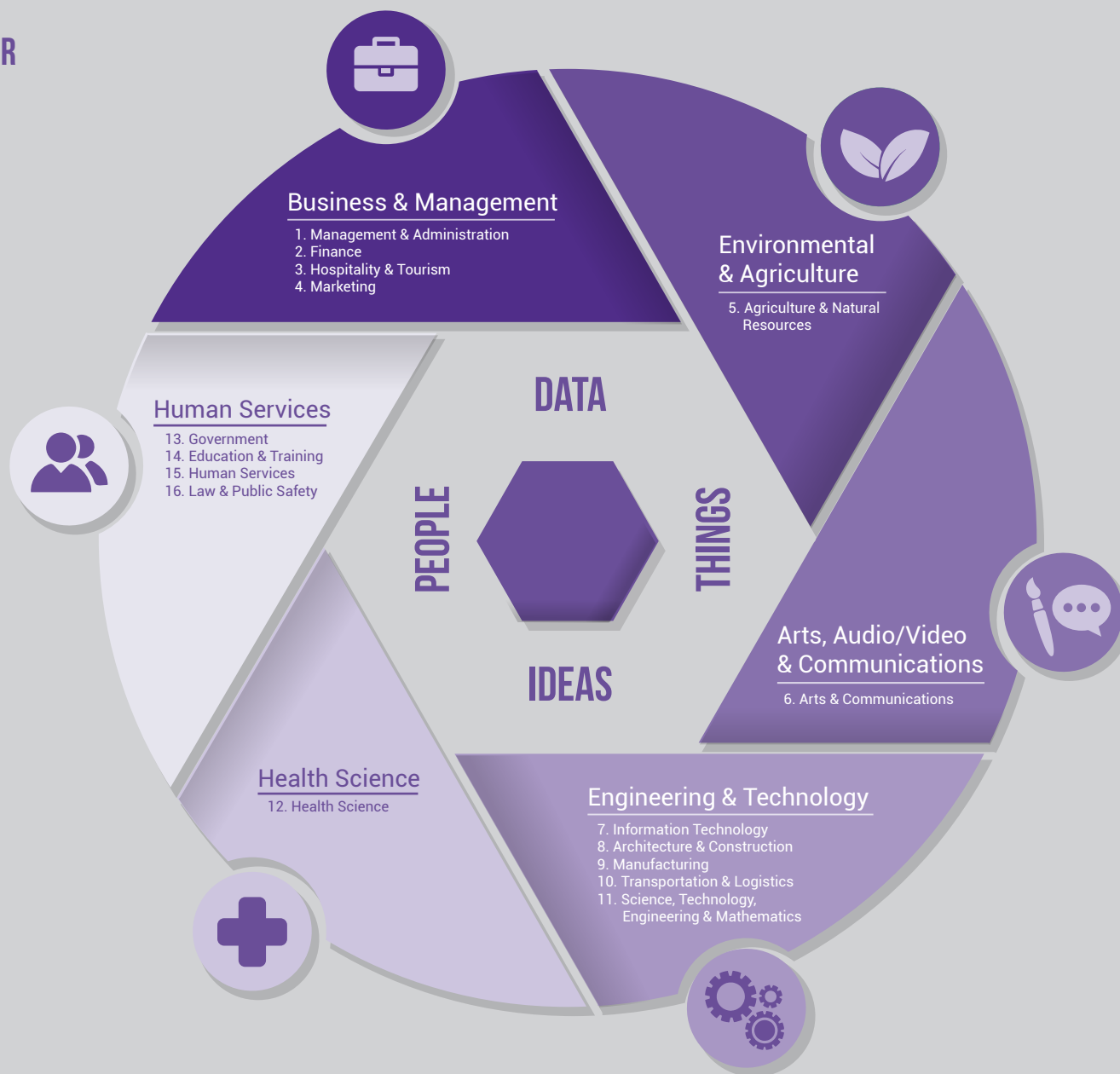
NAVIGATION GUIDE

CONNECTING GRADUATE PROGRAMS AND CAREER FIELDS

THE CAREER CENTER FACILITATES THE CAREER
READINESS OF ALL STUDENTS THROUGHOUT
THE K-STATE COMMUNITY.

Match K-State talent to your company's
internships, co-ops and part-time or
full-time opportunities.

Based on the Kansas Career Cluster
model, careers are organized into six
broad fields related to primary work
tasks. The six fields are then divided
into 16 career clusters based on their
associated knowledge and abilities.



KANSAS STATE
UNIVERSITY | Career Center

148 Berney Family Welcome Center
705 N. 17th St., Manhattan, KS 66506
(785) 532-6506
careercenter@k-state.edu
k-state.edu/careercenter

K-STATE GRADUATE PROGRAMS BY CAREER CLUSTER

Color key by college

- | | |
|--|---|
| ■ Agriculture | ■ Engineering |
| ■ Architecture, Planning & Design | ■ Human Ecology |
| ■ Arts & Sciences | ■ Technology & Aviation |
| ■ Business Administration | ■ Veterinary Medicine |
| ■ Education | |

1. Management & Administration

- MACC Accounting
- MAGB Agribusiness
- MBA Business Administration
- MA/PhD Economics
- MS/PhD Educational Leadership
- MEM Engineering Mgmt.
- MS Dietetics
- MS/PHD Psychological Studies

2. Finance

- MACC Accounting
- MAGB Agribusiness
- MS/PhD Agricultural Economics
- MBA Business Administration
- MA/PHD Economics
- MS/PhD Personal Financial Planning

3. Hospitality & Tourism

- MBA Business Administration
- MS Dietetics
- MS Hospitality & Dietetics Admin.

4. Marketing

- MS/PhD Apparel & Textiles
- MBA Business Administration
- MA/MS Communications Studies
- MS Journalism & Mass Comm.

5. Agriculture & Natural Resources

- MAGB Agribusiness
- MS/PhD Agricultural Economics
- MS Ag. Education & Comm.
- MS/PhD Agronomy
- MS/PhD Animal Science
- MS/PhD Biochemistry
- MS/PhD Biology
- MS/PhD Biological & Ag. Eng.
- MS/PhD Chemistry
- MS/PhD Chemical Engineering

- MS/PhD Civil Engineering
- MS Community Development
- MS Dietetics
- MS/PhD Entomology
- PhD Environ. Design & Planning
- MS/PhD Food Science
- MS/PhD Genetics
- MA/PhD Geography
- MS Geology

- MS/PhD Grain Science
- MS/PhD Horticulture
- MS/PhD Human Nutrition
- MS Kinesiology
- MLA Landscape Architecture
- MS/PhD Mathematics
- PhD Microbiology
- MS Operations Research
- PhD Pathobiology

- MS/PhD Physics
- MS/PhD Plant Pathology
- MRCP Masters of Regional & Community Planning
- MS/PhD Statistics
- DVM Veterinary Medicine
- MS Veterinary Biomedical Science

6. Arts & Communications

- MS Ag. Education & Comm.
- MA/MS Communications Studies
- MA English
- MFA Fine Arts
- MS Journalism & Mass Comm.
- MA Modern Languages
- MM Music
- MA Theatre

7. Information Technology

- MS/PhD Computer Science
- MS/PhD Mechanical Eng.
- MS Software Engineering
- PM Technology

8. Architecture & Construction

- MARCH/MS Architecture
- MS Architectural Engineering
- MBA Business Administration
- MS/PhD Civil Engineering
- MS Community Development
- MA/PhD Geography
- MIAPD Masters of Int. Arch. & Product Design
- MLA Landscape Architecture
- MRCP Masters of Regional & Community Planning

9. Manufacturing

- MS/PhD Biological & Ag Eng.
- MEM Engineering Mgmt.
- MS/PhD Food Science
- MS/PhD Grain Science
- MS/PhD Industrial Engineering
- PM Technology

10. Transportation & Logistics

- MBA Business Administration
- MS/PhD Civil Engineering
- MS Software Engineering
- PM Technology

11. Science, Technology, Engineering, & Mathematics

- MS Architectural Engineering
- MARCH/MS Architecture
- MS/PhD Biological & Ag. Eng.
- MS/PhD Chemical Engineering
- MS/PhD Civil Engineering
- MS/PhD Computer Science
- MS/PhD Electrical Engineering
- MEM Engineering Mgmt.
- PhD Environ. Design & Planning
- MS/PhD Industrial Engineering
- MS Int. Arch. & Product Design
- MLA Landscape Architecture

- MS/PhD Mechanical Eng.
- MS/PhD Nuclear Engineering
- MS Operations Research
- MRCP Masters of Regional & Community Planning
- MS Software Engineering
- PM Technology

12. Health Science

- MS Biomedical Science
- MS Dietetics
- MS Gerontology
- MS/PhD Human Nutrition
- MS Kinesiology
- MPA Public Administration
- MPH Public Health

13. Government

- MS/PhD Agricultural Economics
- MA/PhD Economics
- MA Political Science
- MPA Public Health
- MA/PhD Security Studies
- MA/PhD Sociology/Criminology

14. Education & Training

- MS Academic Advising
- MS/PhD/EdD Adult, Occupational & Cont. Ed.
- MS Ag. Education & Comm.
- MS/PhD Counseling & Stu. Dev.
- MS/PhD/EdD Curriculum & Inst.
- MS/EdD Educational Leadership
- MA English
- MS Family Studies & Human Svcs.
- MFA Fine Arts
- MA/PhD History
- MS/PhD Mathematics
- MA Modern Languages
- MM Music
- MS/PhD Psychological Studies

- MS/EdD Special Education
- MS/PhD Statistics
- MA Theatre

15. Human Services

- MS/PhD/EdD Adult, Occupational & Cont. Ed.
- MS Apparel and Textiles
- MS/PhD Counseling & Stu. Dev.
- MS Family and Comm. Services
- MS Family Studies & Human Svcs.
- MS/PhD Horticulture
- PhD Human Ecology
- MS/PhD Psychological Studies
- MA/PhD Sociology/Criminology
- MS/EdD Special Education

16. Law & Public Safety

- MA/PhD Economics
- MS Family Studies & Human Svcs.
- MA/PhD History
- MA Modern Languages
- MA Political Science
- MS/PhD Psychological Studies
- MA/PhD Security Studies
- MA/PhD Sociology/Criminology

Exclusive for Career Center Corporate Partners **SHINE A LIGHT ON YOUR COMPANY**



Seeking ways to increase your brand awareness among students?

Have company information to share in a personalized way with K-Staters?

Want students to meet “face-to-face” via video-conference with your alumni or executives?

Reserve the Davis Theater in the Berney Family Welcome Center

Occupancy = 110

Available weekdays from 5:30 - 10 p.m.

One free rental for Corporate Partners annually

Contact Kerri at kdkeller@k-state.edu to check availability

KANSAS STATE
UNIVERSITY

Career Center

PARTICIPANT EVALUATION

Employer Advisory Board

July 14, 2017

KANSAS STATE
UNIVERSITY

Career Center

Please take a few moments to evaluate today's event. Your responses will help in future planning.

	Ideal	Good	Fair	Poor	N/A
Date of event					
Advance communications					
Lunch					
Program content					
Overall evaluation of event					

1. What did you value most from today's meeting?
2. What could be improved or enhanced?
3. What other university programs or initiatives would you like to learn more about?
4. Would you like to learn more about corporate partner opportunities with Career Center and the University?
☐ Yes ☐ No ☐ N/A Company _____
5. Please make additional comments about today's event.

Please leave this evaluation form on the table before you leave or use this QR Code or mail the form to:

Sharon Fritzson, Career Center
Kansas State University, 148 Berney Family Welcome Center
705 N. 17th St., Manhattan, KS 66506-3412

