

KANSAS STATE UNIVERSITY Career Center

Employer Advisory Board

Welcome to today's virtual meeting...

I AM THE CLASS OF 2020

If you are having any **technical problems**, call 785-532-6506

Slides are posted for printing
<http://www.k-state.edu/careercenter/conference/employeradvisoryboard.html>



KANSAS STATE UNIVERSITY

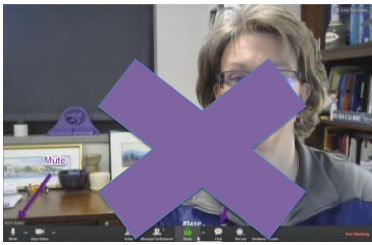
Berney Family Welcome Center

Yes virtual **Coming to you LIVE** **but still!**



KANSAS STATE UNIVERSITY

Navigation Tips



KANSAS STATE UNIVERSITY

Today's Agenda


10:00-10:25am Welcome and introductions

10:25-10:35am What just happened?

10:35-10:45am What's ahead?

10:45-11:55am Webinar presentation
Virtual Internships and Recruiting Practices:
Students' Unvarnished Assessment
 Mary Scott, Scott Resource Group

11:55-12:00pm Wrap-up



KANSAS STATE UNIVERSITY

Introductory Roll Call



How would you describe your vision for the year ahead?

KANSAS STATE UNIVERSITY

Employer Attendees

As of 1/6/21

Company/Organization	First Name	Last Name	Title	City	St
Altec, Inc.	Laine	Stoblauch	HR Representative	Saint Joseph	MO
Big Lakes Developmental Center, Inc.	Lugen	Lutz	Human Resources Director	Manhattan	KS
BNSF Railway	Ashley	Riveland	Sr. Specialist College Recruiting	Fort Worth	TX
Burns & McDonnell	Alexis	Collier	Recruiter	Kansas City	MO
C.H. Robinson	Jessie	Kirby	Senior Recruiter	Eden Prairie	MN
Cargill	Modester	Mpunga	University Recruiting Specialist	Wichita	KS
Champion Teamwear	Mallory	Laufer	Talent Sourcing & Dev Manager	Manhattan	KS
Cintas Corporation	Holly	McDonough	Campus Talent Acquisition Manager	San Antonio	TX
Comcast/Philips	Darbi	Alzom	Lead, University Engg Recruiting	Bar/Beville	OK
Garrison	McKenzie	Randall	University Recruiter	Clifton	KS
Honeywell PM&T	Danny	Valencia	Campus Manager	Kansas City	MO
John Deere	Kristi	Ewing	Product Program Lead	Collierville	KS
Koch Industries	Katie	Huebskamp	Early Career Recruiter	Wichita	KS
Koch Industries	Nathan	Spriggs	K-State Recruiting Lead	Wichita	KS
K-State College of Business	Kurt	Roberts	Director, Career Development	Manhattan	KS
K-State Innovation Partners	Rebecca	Robinson	Chief Corp. Eng. & Econ Dev. Officer	Manhattan	KS
K-State Student Life	Thomas	Lane	Vice President & Dean	Manhattan	KS
KSU Foundation	Galen	Burnham	Director Corp. Relations	Manhattan	KS
KSU Foundation	Jessie	Neville	Director Corp & Foundation Relations	Manhattan	KS
KSU Foundation	Chris	Sponner	AVP	Manhattan	KS
KSU Foundation	Samantha	Volkman	Development Coordinator	Manhattan	KS
Manhattan Area Chamber of Commerce	Davey	Soldan	Director of Economic Development	Manhattan	KS
MHC	Hilary	Worcester	Coordinator Talent Industry Partnerships	Manhattan	KS
Painew Mental Health Services	Craig	Pois	HR Director	Manhattan	KS
Soular	Leslie	Conroy	Recruiter	Omaha	NE
Tektron Aviation	Alex	Hogan	Recruiter	Wichita	KS
Tektron Aviation	Phet	Namphongkone	HR Manager	Wichita	KS
Union Pacific Railroad	Jennifer	Balk	Sr. Recruiter	Overland Park	KS
USD 383	Andrew	Turner	HR	Manhattan	KS

KANSAS STATE UNIVERSITY

Career Center Participants

Andrew Kohls, Asst Dir, Arch & Grad Students
 Anthony Ybarra, Asst Dir, Engineering
 Ashley Motley, Asst Dir, Arts & Sciences
 Jaci Kohn, Asst Dir, Health & Human Sciences
 Jared Mettler, Sr. Asst Dir, Career Exploration
 Mary Ellen Barkley, Asst Dir, Ag & Vet Med
 Pat Hudgins, Assoc Dir, Education
 Christa Dell'Isola, Events Assistant
 Deb Owens, Interview Coordinator
 Mario Garcia, Employer Relations Assistant
 Kerri Day Keller, Executive Director

andrewkohls@ksu.edu
 anthonyy@ksu.edu
 akmotley@ksu.edu
 jkohn@ksu.edu
 jmettler@ksu.edu
 meebark@ksu.edu
 phudgins@ksu.edu
 christadellisola@ksu.edu
 dowens@ksu.edu
 mariog@ksu.edu
 kdkeller@ksu.edu



KANSAS STATE
UNIVERSITY

Fall Semester Highlights?

	Fall 2018	★	Fall 2019
AUCF employers (3 days)	441	↑	463
AUCF students (3 days)	4,813	↓	4,412
Handshake activations	8,010	↑	10,594
Career Closet visits	1,034	↑	1,039
Career advising	1,105	↓	1,048
Drop ins	1,082	↓	753
Companies interviewing	231	↑	235
Student interviews	2,410	↓	2,338
Video/Phone interviews	100	↑	111

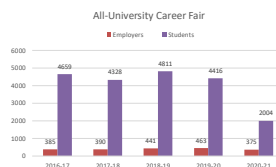
KANSAS STATE
UNIVERSITY

Fall Semester Trends



KANSAS STATE
UNIVERSITY

All-University Career Fair



KANSAS STATE
UNIVERSITY

Spring 2021

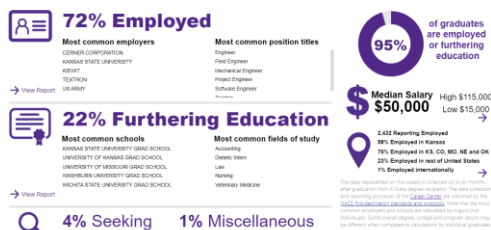
Opportunities On Demand: Agriculture – February
 Engineering Career Fair – February 10
 Educate Kansas Virtual Career Fair – February 17
 Design Expo – February 26
 EDCATS Interviews – March 1
 Business Career Fair – March 9
 Big 12 Virtual Career Fair – March 24



<http://www.k-state.edu/calendar/>

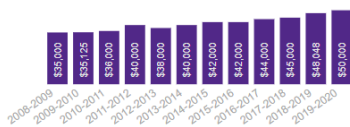
KANSAS STATE
UNIVERSITY

Class of 2019-20



KANSAS STATE
UNIVERSITY

Class of 2019-20



Median of Reported Salaries

Based on bachelor degree hires only

KANSAS STATE
UNIVERSITY

Top Employers

KANSAS STATE UNIVERSITY	US DEPARTMENT OF AGRICULTURE
CERNER CORPORATION	HONEYWELL
KIEWIT	BLACK AND VEATCH
US ARMY	FARM BUREAU FINANCIAL SERVICES
TEXTRON	HENDERSON ENGINEERS
BURNS AND MCDONNELL	ARCENT MILLS
GEARY COUNTY USD 475	FOCUS
CARGILL	MANHATTAN OGDEN USD 383
KDCH INDUSTRIES AND AFFILIATES	US AIR FORCE
GARMIN	BNSF RAILWAY
SHAMROCK TRADING CORPORATION	EPIC SYSTEMS
AMAZON	ERNST AND YOUNG
KANSAS CITY KANSAS USD 500	KANSAS DEPARTMENT FOR CHILDREN AND FAMILIES
NETSMART TECHNOLOGIES	CLATHE USD 233
PEPSICO	SHAWNEE MISSION USD 512

Based on bachelor degree hires only

KANSAS STATE
UNIVERSITY

What's ahead?



Class of 2020-21

KANSAS STATE
UNIVERSITY

Featured Presentation



Mary Scott

*Virtual Internships and Recruiting Practices:
Students' Unvarnished Assessment*

KANSAS STATE
UNIVERSITY

Future dates to note

Summer 2021

- Career Center Employer Advisory Board Meeting – July 16, 2021

Fall 2021

- All-University Career Fair – September 21, 22 and 23, 2021 at Bramlage Coliseum



KANSAS STATE
UNIVERSITY

KANSAS STATE
UNIVERSITY | Career Center



<http://www.k-state.edu/careercenter/conference/employeradvisoryboard.html>

Thank you!

KANSAS STATE
UNIVERSITY