



Career Center

Employer Advisory Board

Welcome to today's virtual meeting...



Join audio by computer or
you may join by phone at
+1 646 876 9923 or 669 900 6833
Meeting ID: 785 532 1691



If you are having any **technical problems**,
call 785-532-1691

Slides are posted for printing
<http://www.k-state.edu/careercenter/conference/employradvisoryboard.html>





Berney Family Welcome Center



Coming to you LIVE!





Today's Agenda

10:00-10:30am Welcome and introductions

10:30-10:45am Highlights from Fall 2018

10:45-10:55am What's ahead for 2019

10:55-11:55am Webinar presentation
Human vs AI: Can Both Come Together to Reduce Hiring Bias?
Dr. Nathan Mondragon, Chief IO Psychologist, HireVue

11:55-12:00pm Wrap-up





Navigation Tips



Mute

Chat

KANSAS STATE UNIVERSITY

Introductory Roll Call



What is your New Year's theme?

KANSAS STATE UNIVERSITY

Employer Attendees

As of 1/3/19

Company/Organization	First Name	Last Name	Title	City	State
Archer Daniels Midland	Taylor	Van Natta	College Relations Coordinator	Decatur	IL
Big Lakes	Lori	Feldkamp	CEO	Manhattan	KS
BNSF Railway	Carrington	Barnes	Manager Central Staffing	Fort Worth	TX
Cerner Corporation	Katie	Turner	Recruiting Partner	Kansas City	MO
Chevron Phillips Chemical	Katie	Clark	Global Product Manager	The Woodlands	TX
Cintas Corporation	Holly	McDonough	Campus Talent Acquisition Manager	Dallas	TX
ConocoPhillips	Darbi	Alstrom	Lead, University Engineering Recruiting	Bartlesville	OK
Edward Jones	Leroy	Shumpert	Manager, Financial Advisor Career Dev	Maryland	MO
Freightquote	Lisa	Cough	Recruiter	Kansas City	MO
Garmin International	Katie	Algood	STEM Diversity Recruitment Specialist	Olathe	KS
Hilton Garden Inn	Caillin	Cluewicz	Banquet Manager	Manhattan	KS
John Deere	Jessica	Hubner	University Relations Recruiter	Madison	IL
Koch Industries	Tanner	Vincent	Project Engineering Leader	Wichita	KS
KSU-KC	Rebecca	Robinson	Dir. Economic Development	Manhattan	KS
Manhattan Area Chamber of Commerce	Trent	Armbrust	Director of Economic Development	Manhattan	KS
Manhattan Area Chamber of Commerce	Christy	Rodriguez	Program Director	Manhattan	KS
Peace Corps	Rebecca	Ronder	KSU Peace Corps Representative	Frankfort	KS
Phillips 66	Calvin	Moniz	Sr. Advisor Univ Relations & Recruiting	Bartlesville	OK
Textron Aviation	Travis	Cottrell	Director, Fleet Sales	Wichita	KS
Twin Valley Telephone/MSG Technology	Scott	Leitzel	COO/General Manager	Milwaukee	KS
USD 383	Andrew	Turner	HR Director	Manhattan	KS

KANSAS STATE UNIVERSITY

Introductory Poll









Your New Year's Theme?





Career Center Participants

Andrew Kohls, Asst Dir, Arch & Grad Students
ajdeluca@ksu.edu

Anne DeLuca, Asst Dir, Engineering
akmotley@ksu.edu

Ashley Motley, Asst Dir, Arts & Sciences
anthony@ksu.edu

Anthony YBarra, Asst Dir, Business
nordyke@ksu.edu

Dana Nordyke, Sr. Asst Dir, Human Ecology
dschaub@k-state.com

Deb Rodenbaugh-Schaub, Alumni Career Services
jmetter@ksu.edu

Jared Metter, Sr. Asst Dir, Career Exploration
phudjins@ksu.edu

Pat Hudjins, Assoc Dir, Education
kd Keller, Director





Fall Highlights

	Fall 2017	★	Fall 2018
AUCF employers (3 days)	390	↑	441
AUCF students (3 days)	4,328	↑	4,813
Handshake activations	7,773	↑	8,010
Career Closet visits	945	↑	1,034
Career advising	1,471	↓	1,105
Drop ins	559	↑	1,082
Companies interviewing	219	↑	231
Student interviews	2,358	↑	2,410
Video/Phone interviews	82	↑	100



3

Career Center Cookout



ConocoPhillips



KOCH INDUSTRIES INC.



JOHN DEERE

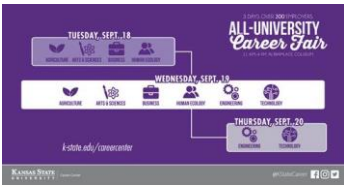


GARMIN

KANSAS STATE UNIVERSITY

All-University Career Fair

Daily Attendance	2009	2010	2011	2012	2013	2014	2015	2016	2017	2018
TUE	1156	1009	2116	2042	2297	2064	2092	1465	1349	1693
WED	1244	1506	1564	1953	1601	2101	1991	1377	1182	1272
THU								1877	1797	1861
Grand Total	2400	2515	3680	4195	3898	4165	4083	4329	4328	4826

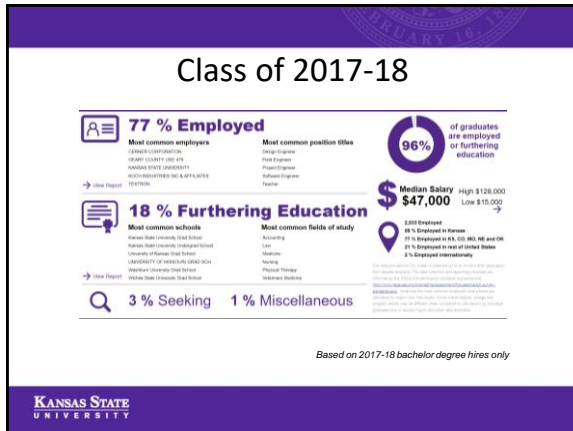


KANSAS STATE UNIVERSITY

STUDENT REFRESHMENTS

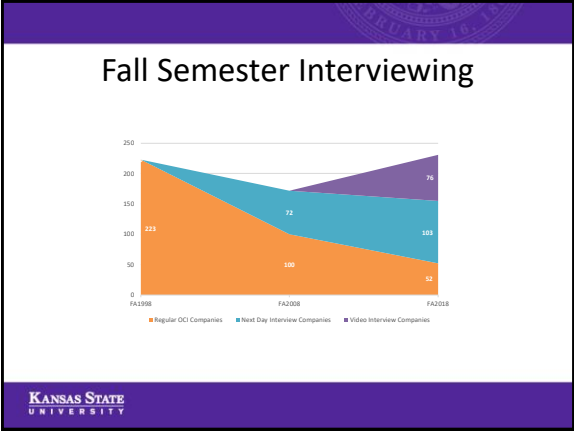


KANSAS STATE UNIVERSITY









Featured Presentation

Dr. Nathan Mondragon
Human vs. AI: Can Both Come Together To Reduce Hiring Bias?

KANSAS STATE UNIVERSITY

Spring 2019

Agri-Industry Career Fair – January 30
Engineering Career Fair – February 12 & 13
Design Expo – March 1
Education On-Campus Interviews – March 4
Big 12 Virtual Career Fair – March 27
K-State Open House – April 6

<http://www.k-state.edu/calendar/>

KANSAS STATE UNIVERSITY


Future dates to note


Summer 2019

- Career Center Employer Advisory Board Meeting – July 19, 2019

Fall 2019


- All-University Career Fair – September 24, 25 and 26, 2019 at Bramlage Coliseum







Career Center



<http://www.k-state.edu/careercenter/conference/employeradvisoryboard.html>

Thank you!