

KSUMB Drumline

2026 Snare Drum
Audition Packet



Drumline Director:

Javi Garza
Javi48@ksu.edu

What we are looking for

Above all: a great attitude and solid foundation are the most important things to bring to audition for the KSUMB Drumline. Aside from this, here are a few items to prioritize in your preparation:

Technique:

- We will be focusing on your SOUND above all. To generalize: you should be relaxed, comfortable, and have a big sound while playing
- Snare drums will be playing on a tilt (10 degrees)
- Tenors should ALWAYS prioritize playing on one drum before all the drums
- Basses should always expect to play in unison as well as splits. Start with the snare part when practicing. Be prepared to learn different bass parts throughout the process

Sound:

- Focus on getting the most resonance out of the drum and sticks as possible
- Do not squeeze the sticks
- Prioritize having a consistent sound (all the taps sound the same in a phrase, right and left hands match in quality, etc)
- The best sound you will achieve is typically "8's". Start with this, and work every exercise to match that relaxed sound

Rhythms:

- Above all, rhythms must be accurate and consistent
- Play mathematically correct rhythms (Play the rhythm, not the rudiment)

Exercises:

- Start with the Basics. Work a solid foundation of Timing and Accent exercises at various volumes and tempos
- Quality over Speed. Work each exercise focusing on correct and consistent rhythms, while achieving a big and open quality of sound
- Memorization is not crucial to the audition, but it will help with your confidence and consistency when the pressure is on!

How to practice:

- Ideally: Practice on a drum that is tuned well! If drum is not available, try to use the most realistic practice pad possible (to avoid "pad hands")
- Play with great quality sticks, so you can always hear your quality of sound
- Practice with a metronome
- Stand up and play in front of a mirror
- Do not be afraid to record yourself and watch. You will be your biggest critic, and it will help with your perspective on what to focus on!

Have fun!

Paradiddle Panic

♩ = 130

heavy

mp r l r r l r l l l r l r r l b b R l r r L r l l R l r r l R

solo
f R R R l R R l R R R R l R r l r l r B R l r r L r l l

A

f R l r r L r l l R l r r L r l l R l r r l l R l r r l l R l r r L r l l R l r r L r l l r r L r l l r r L r l l

r l R L r l R L R l r r l r L R l r L R L r l l r l R L r l R L R l r r l r L R l r L R L r l l

R R R R R l R l R R l R R L r L r L L L r L r L L L r l R l R l R R l R R l R l R R l r L r L r L L L r L r L L L

2 **3** **3** **3** **3**
R b < r r r l l l
mp

B

f R l r r R l r r etc... R l r r l l r l R l r r l l l l l r r l l r R l r r l l r b b b

L r l l L r l l etc... L r l l r r l r L r l l r r l L r l l r r l L r l l r r l l b B

C

R l l R l l R l l R l l etc... R l l r r L r r L r r L r r L r r etc... L l r r l l

L r l r r l l R L R L R L R l r r l l R L R L R L r l l R r l l R B

David

A $\text{♩} = 110$ 3 3 3 3 3 3 3 3 3 3

f r r r r l r l l l r l r l l l l l r l r r l r l b b b b ... r l r l l r l r r l r l l l r l r

mf r l r l r l r l r l R l r l r l r l r l r l r l r l R l l r l r l r l r l r l r l R l r l r l r l r l r l R l l

B 3 3 3 3 3 3 3 3 3 3 3 3

f r r r r r l l l l r r l l l l l l r r r r l l b b b b ... r r l l l l r r r r l l l l r r

r r r l l r l l l r r l l l r r l l r r l l r l l r r l l r r l l r r l l r r l l R l r r l l r r l l r r l l r r l l r r l l R l r r l l r r l l r r l l r r l l R l l

C 3 3 3 3 3 3 3 3 3 3 3 3

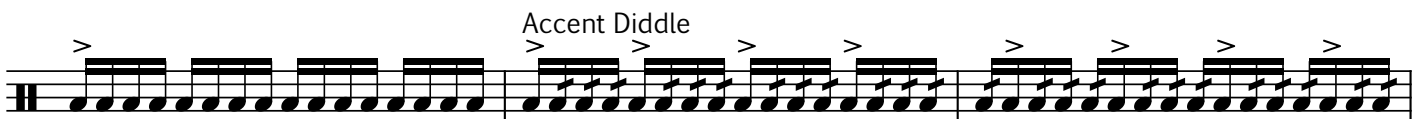
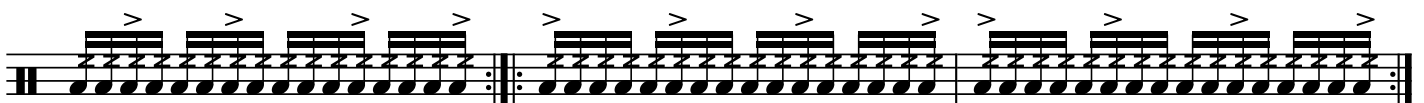
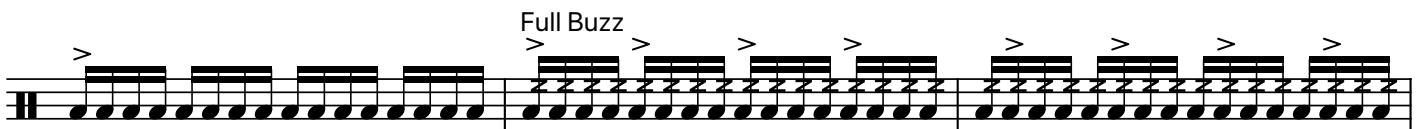
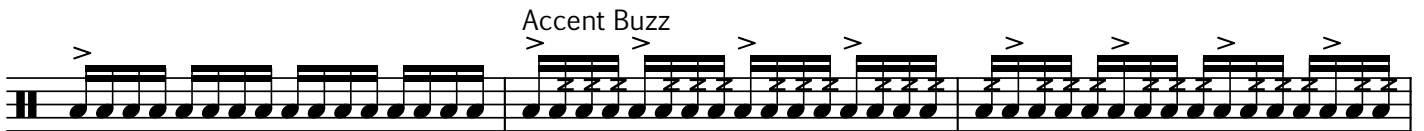
r r r l l R l r l r l r l l l r R l l r l r l r l r l r l r l r l r l r l r l R l r r l r l r l r l r l r l r l R l l

r l r l r l R l r r l r l r l r L r l l r l r l r l R l r r l r l r l r L r l l

ManChops

♩ = 110

16th note accent grid



A musical staff with a treble clef and a key signature of one flat. It contains a sequence of rhythmic patterns, each marked with an accent (>). The patterns consist of eighth notes grouped in pairs, with a quarter rest following each pair. The sequence is divided into three measures by bar lines.

A musical staff with a treble clef and a key signature of one flat. It contains a sequence of rhythmic patterns, each marked with an accent (>). The patterns consist of eighth notes grouped in pairs, with a quarter rest following each pair. The sequence is divided into three measures by bar lines.

Diddle Accent

A musical staff with a treble clef and a key signature of one flat. It contains a sequence of rhythmic patterns, each marked with an accent (>). The patterns consist of eighth notes grouped in pairs, with a quarter rest following each pair. The sequence is divided into three measures by bar lines.

A musical staff with a treble clef and a key signature of one flat. It contains a sequence of rhythmic patterns, each marked with an accent (>). The patterns consist of eighth notes grouped in pairs, with a quarter rest following each pair. The sequence is divided into three measures by bar lines.

A musical staff with a treble clef and a key signature of one flat. It contains a sequence of rhythmic patterns, each marked with an accent (>). The patterns consist of eighth notes grouped in pairs, with a quarter rest following each pair. The sequence is divided into three measures by bar lines.

8-8-16

A musical staff with a treble clef and a key signature of one flat. It contains a sequence of rhythmic patterns, each marked with an accent (>). The patterns consist of eighth notes grouped in pairs, with a quarter rest following each pair. The sequence is divided into six measures by bar lines.

R R R etc... L L L etc... R R R ... R R R ... L L L etc... R R R etc...

A musical staff with a treble clef and a key signature of one flat. It contains a sequence of rhythmic patterns, each marked with an accent (>). The patterns consist of eighth notes grouped in pairs, with a quarter rest following each pair. The sequence is divided into four measures by bar lines.

L L L etc... L L L etc...

Show Excerpt 2025

$\text{♩} = 75$

center snare

add all

f *mp* *f* *R 1 1*

mf *f* *mf* *ff* *fp* *f*

ff *ff*