

**Responses for this report only include seniors within the University, except where noted.*

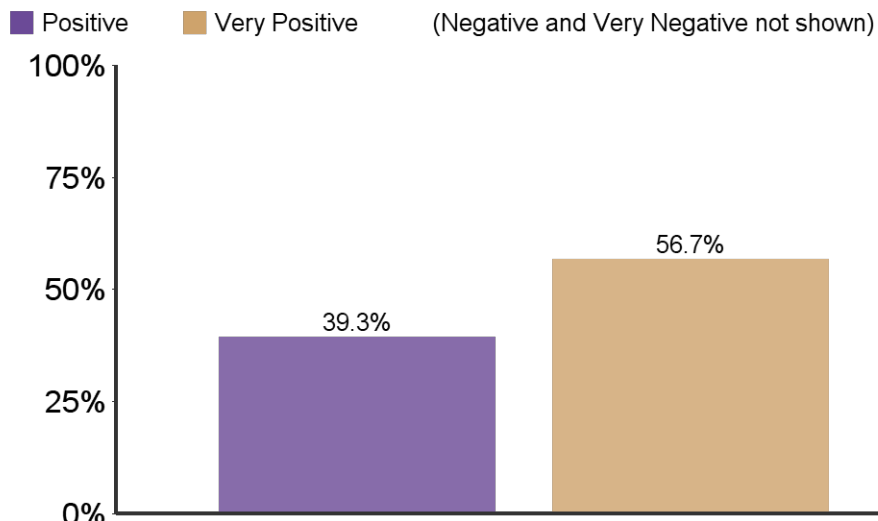
	University
Responses	1718
Initial Population	3672
Response Rate	46.8%

Survey Information:

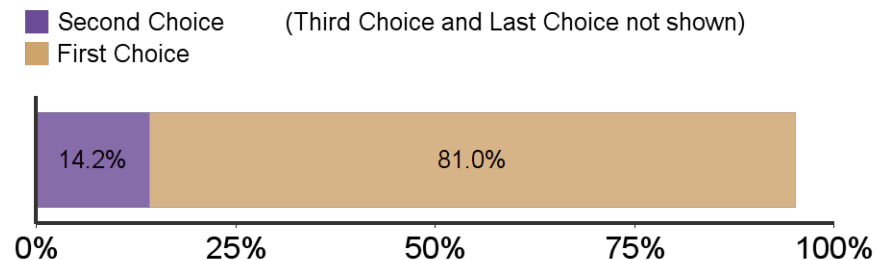
- The Senior Survey is designed to give undergraduate students the opportunity to reflect upon their K-State experiences. This information is used to improve the college experience for future students by identifying strengths in our programs as well as areas that need further development. The survey includes issues relating to satisfaction with K-State regarding academic programs, intellectual and personal growth, student services, and preparation for a career or a graduate/professional school.
- The survey is offered electronically (through Qualtrics) to seniors who have been cleared for graduation by their respective colleges

Table of Contents	
Introduction	1
Section I: Overall Satisfaction	2
Section IIa: 2025--Research, Scholarly, Creative Active Discovery	3
Section IIb: 2025--Undergraduate Educational Experience	5
Section IIc--Faculty and Staff	8
Section III: Demographics	10
Section IV: K-State Office and Services	12
Section V: Results Tables	15

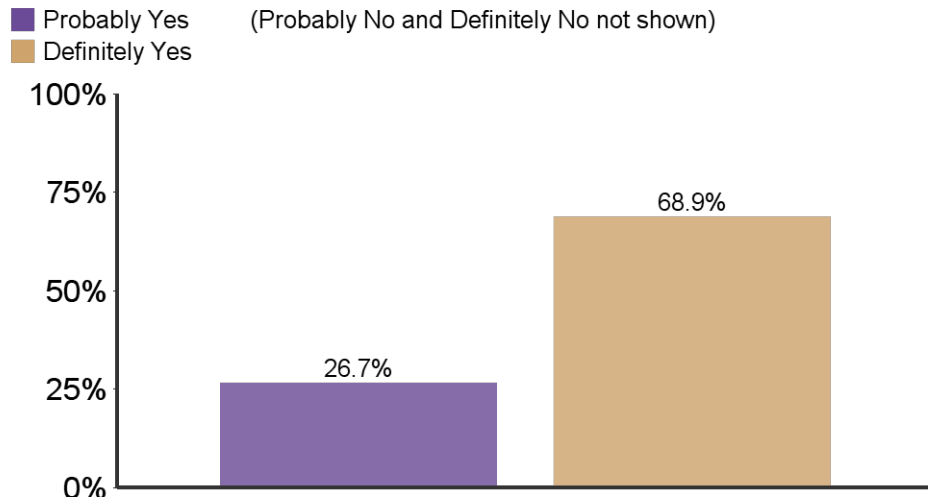
What is your general attitude toward K-State?



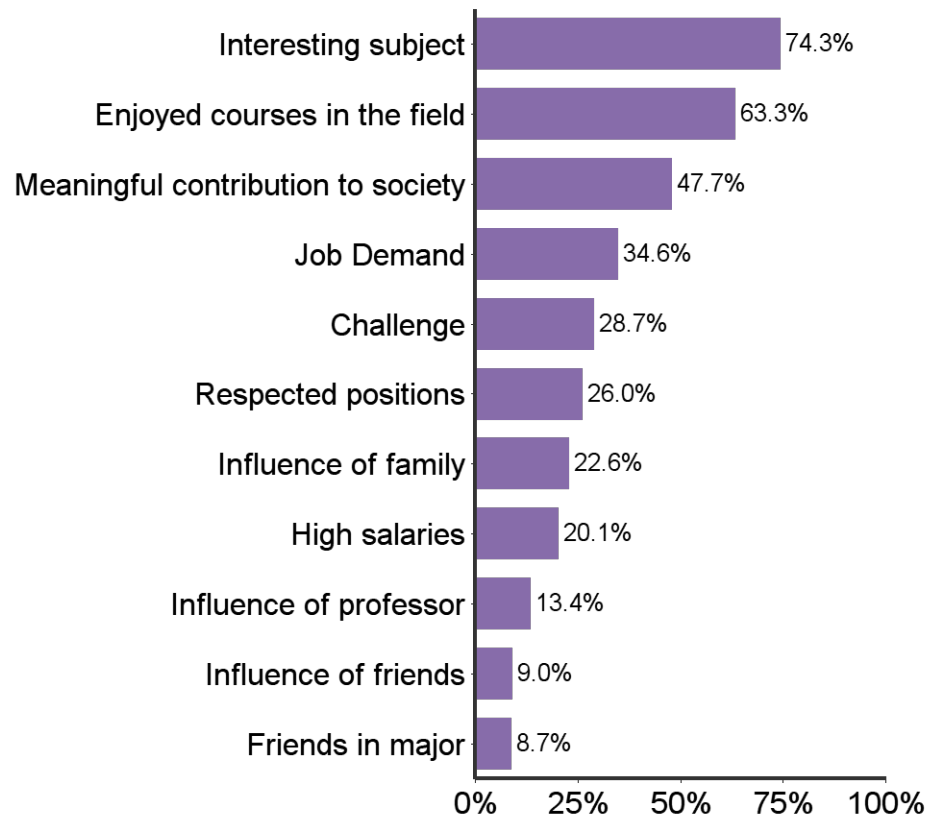
When you applied to K-State, it was your:



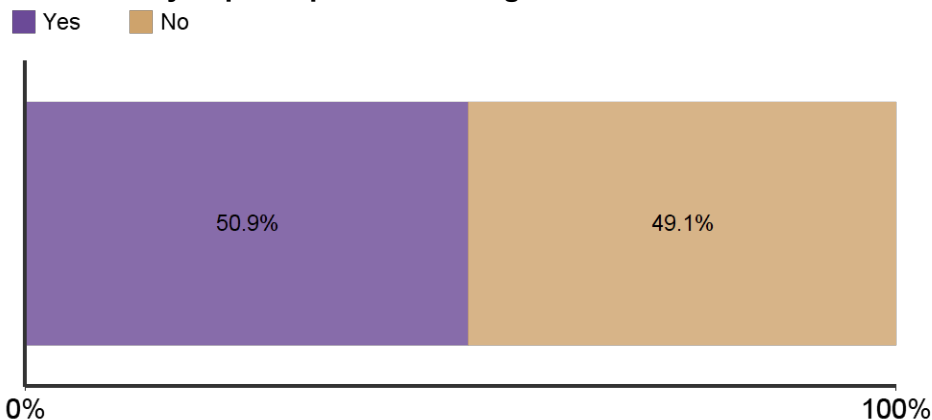
Would you recommend K-State to others?



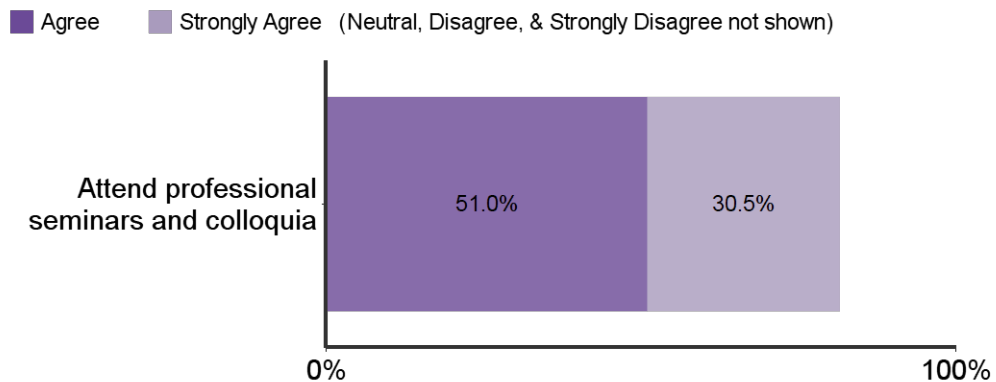
Reasons for choosing major



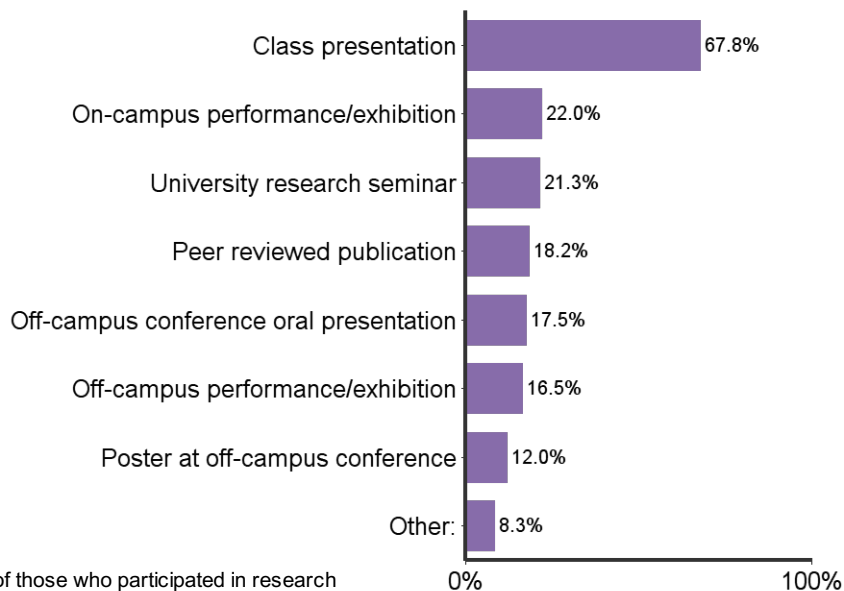
Have you participated in undergraduate research?



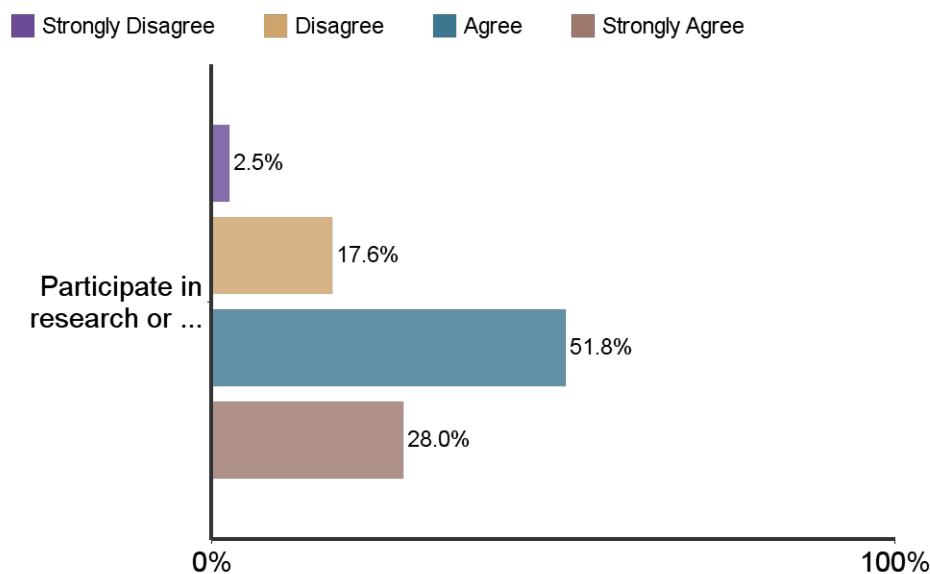
Students in my major are encouraged to:



What type(s) of research dissemination have you successfully achieved?

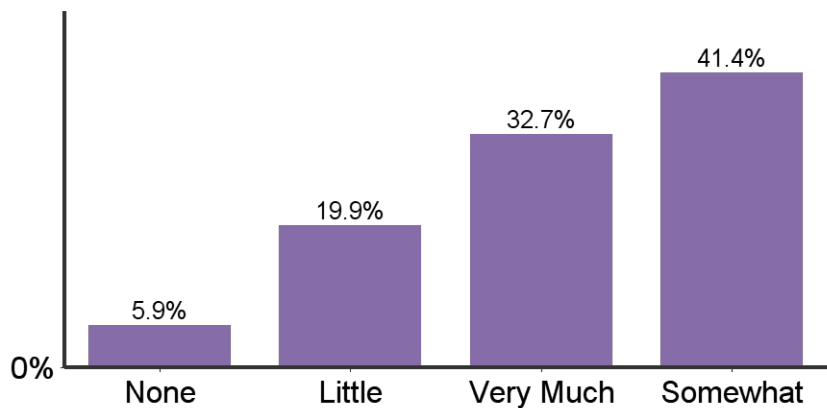


Students in my major are encouraged to participate in research/creative projects:

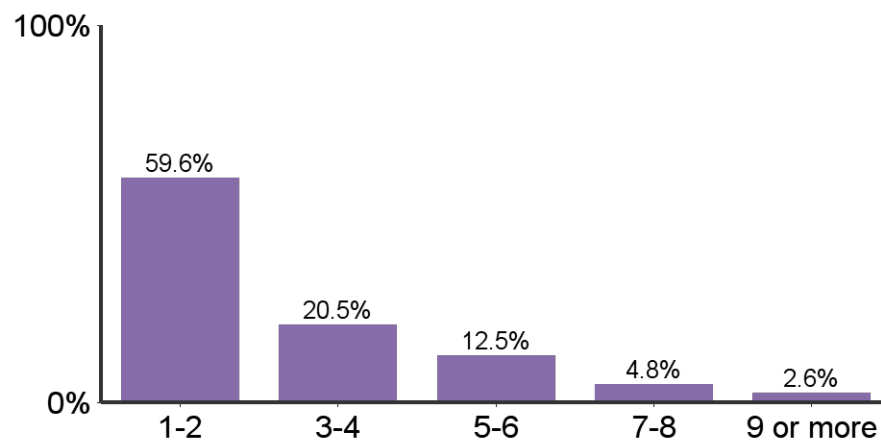


*All results on the corresponding page include only responses from those who participated in research

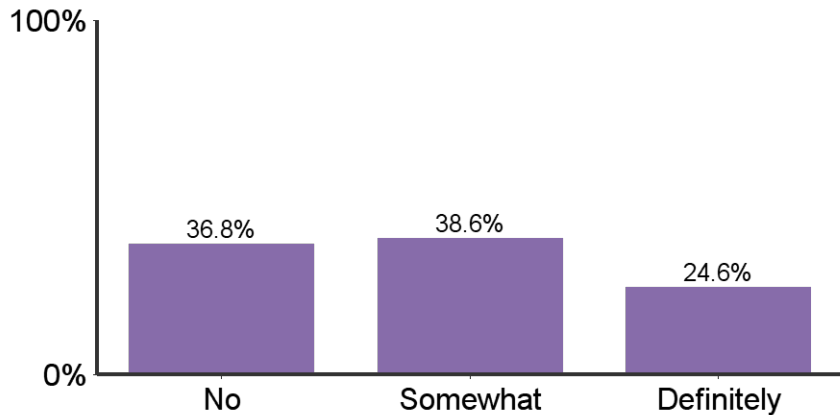
To what extent did your research experience contribute to your academic success?



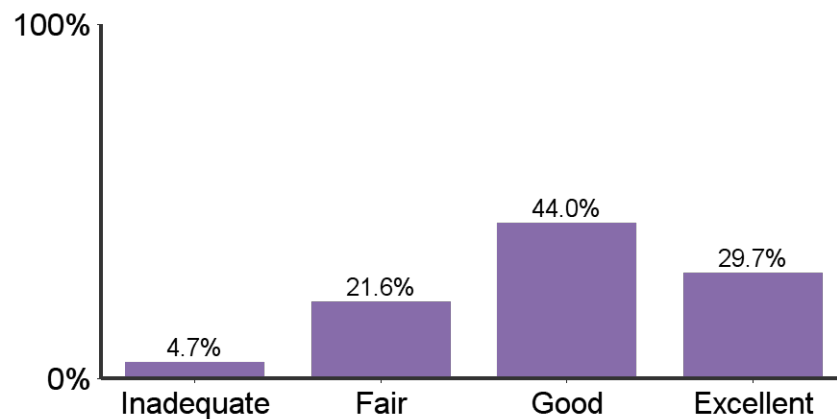
Number of semesters involved in a research or creative endeavor:

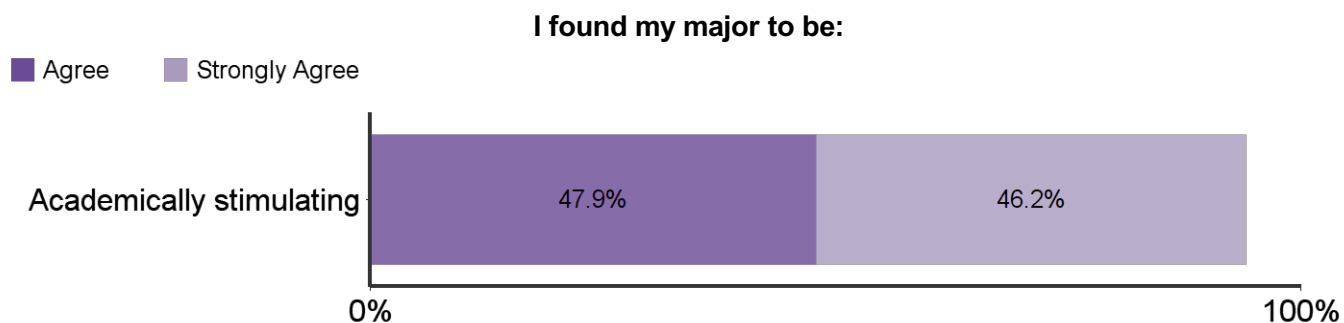
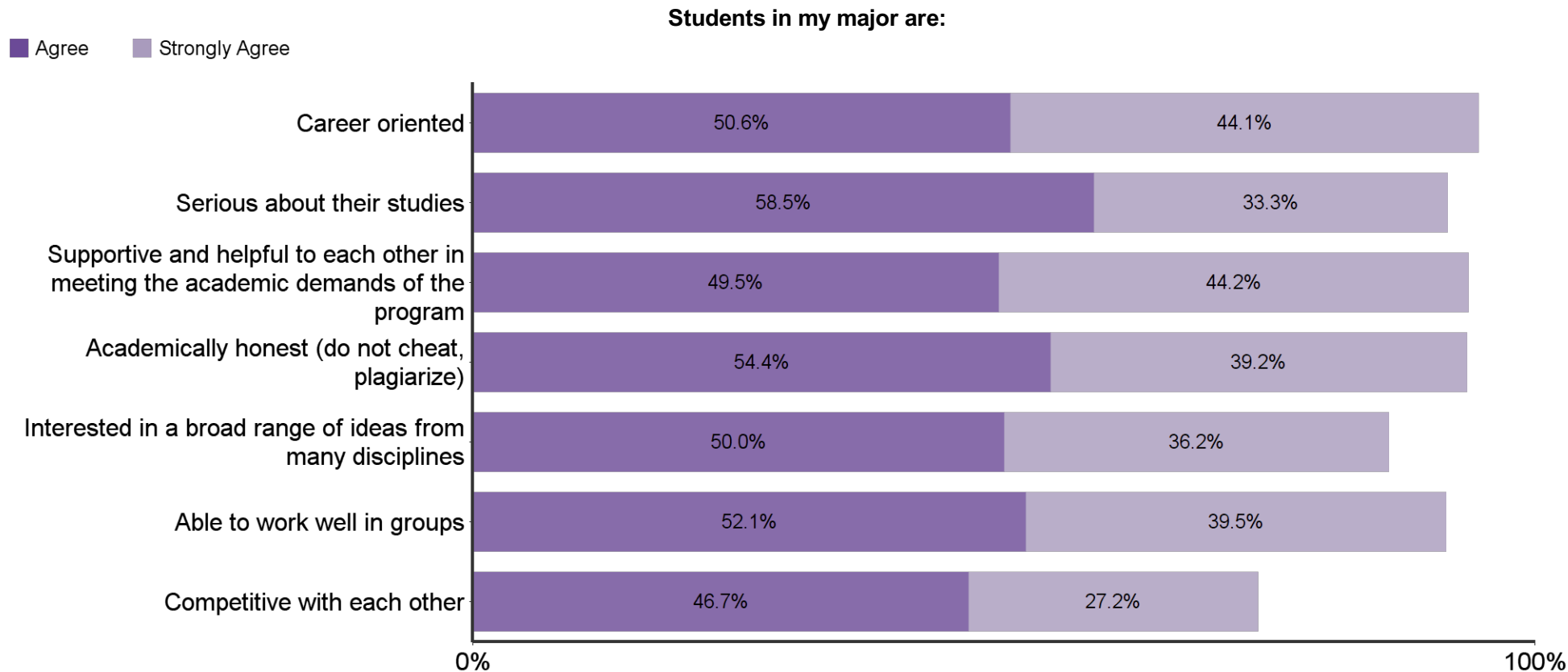


Did your research experience contribute to your career choice?

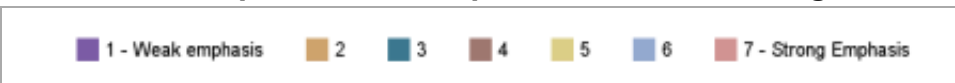


How would you rate the contribution of your mentor to your research?

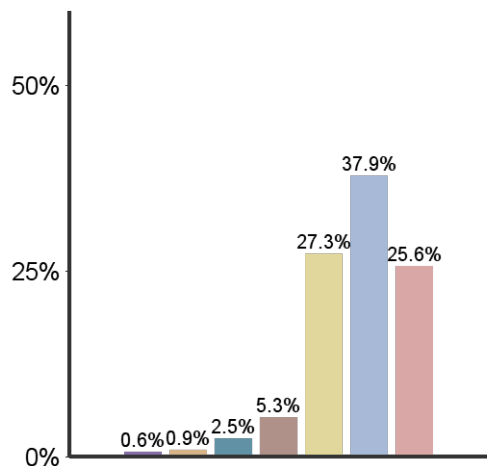




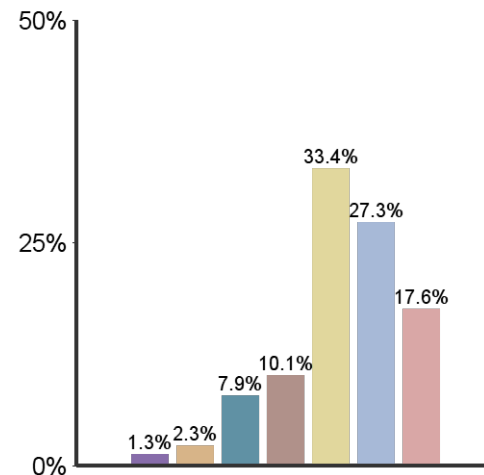
Emphasis K-State placed on the following:



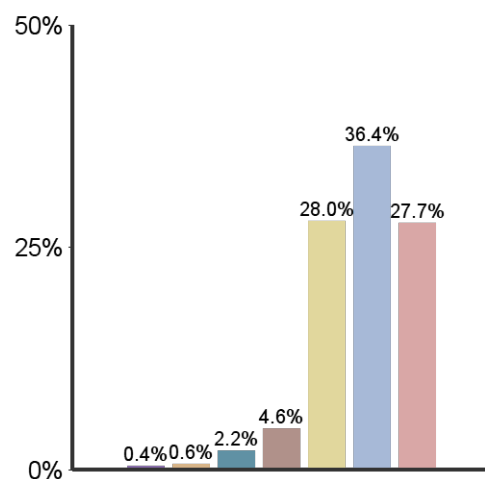
Academic & Scholarly Qualities



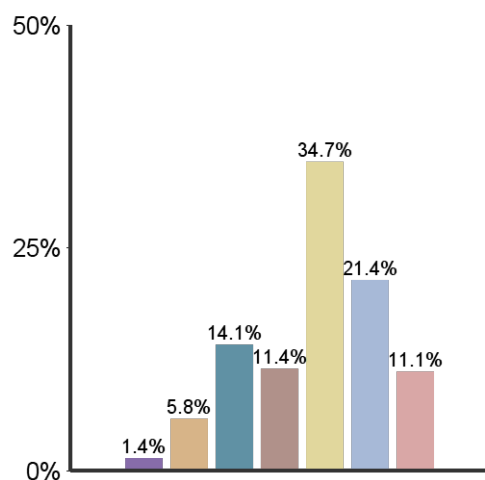
Vocational and occupational competence



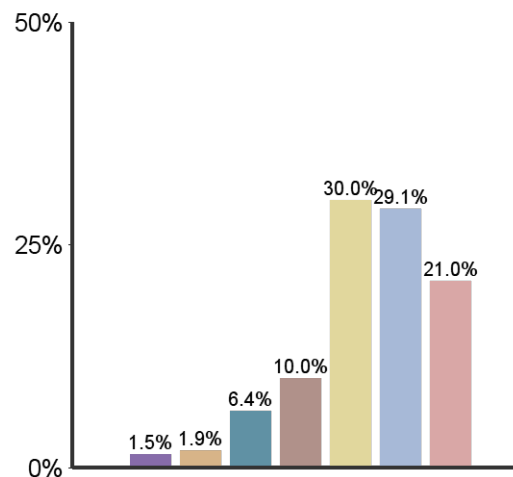
Being critical, evaluative, and analytical



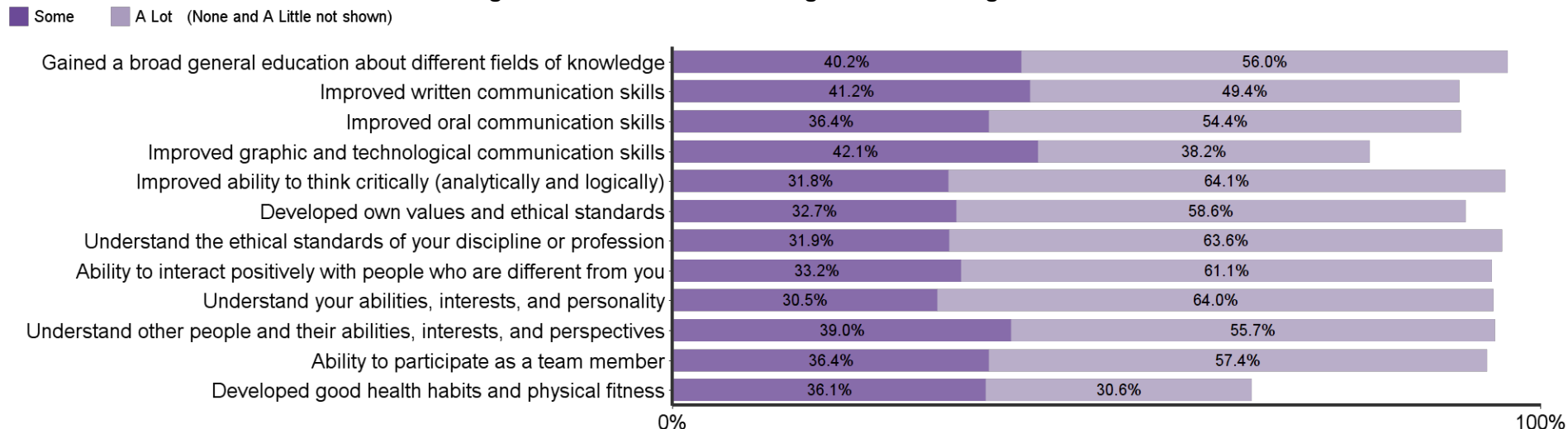
Aesthetic, expressive, & creative qualities



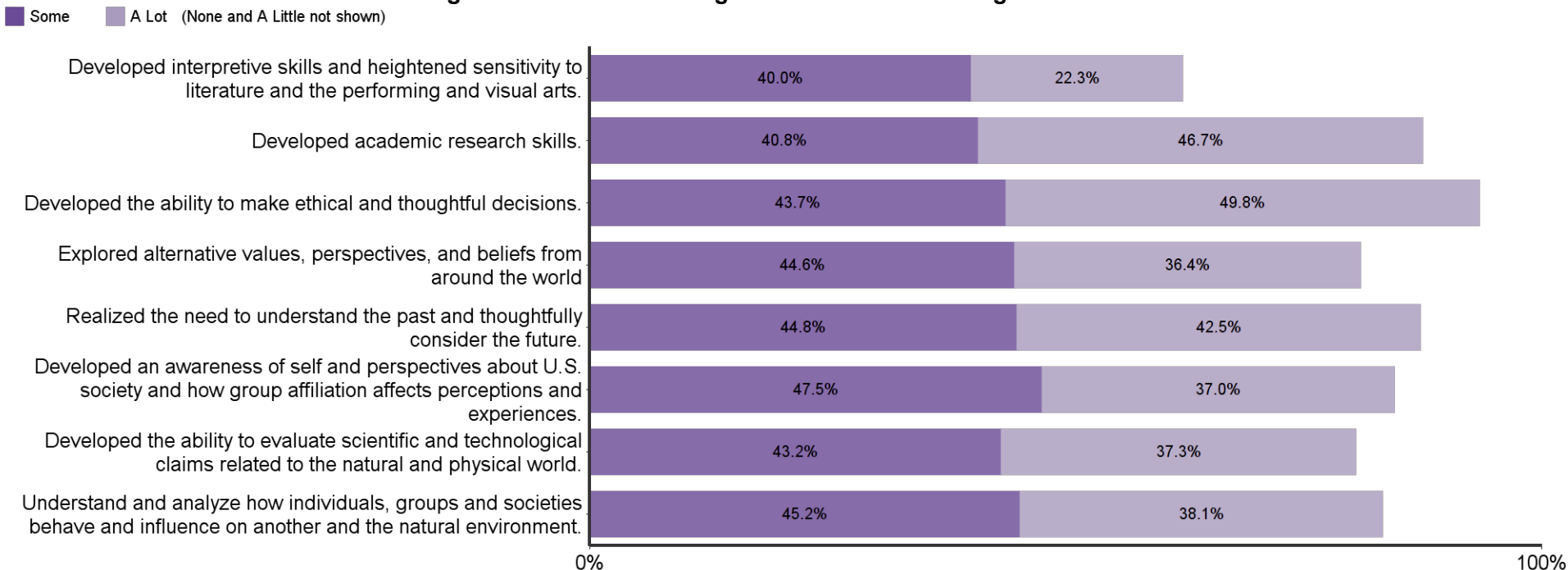
Personal relevance & practical value



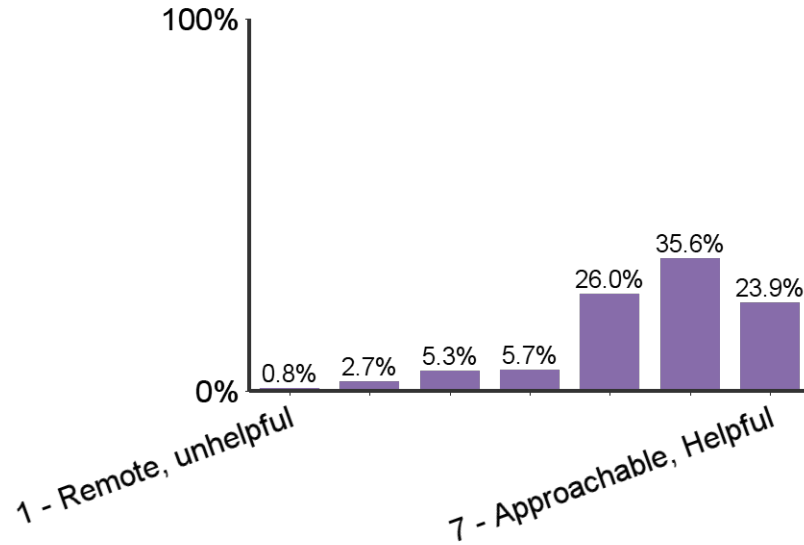
Progress made in K-State undergraduate learning outcomes:



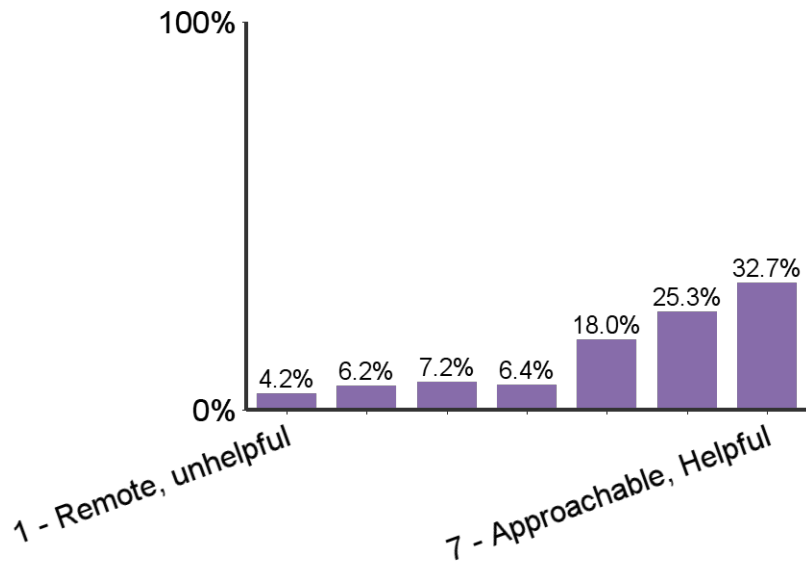
Progress made in K-State 8 general education learning outcomes



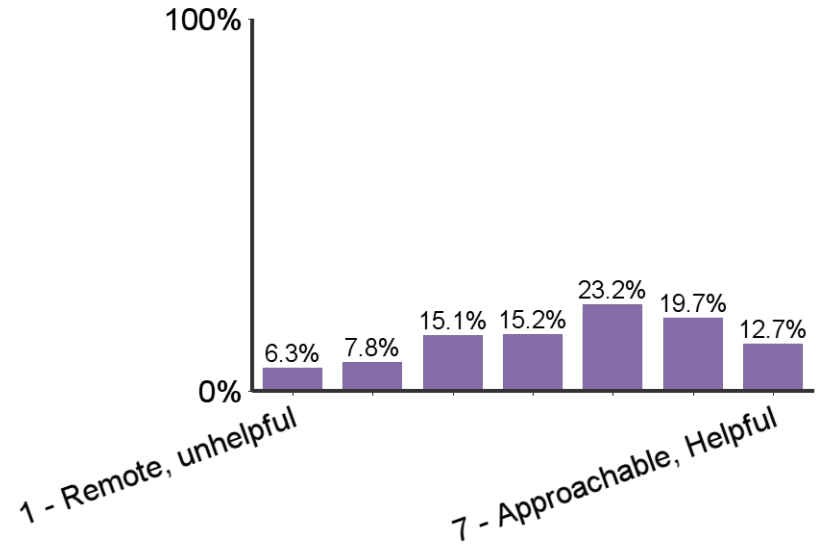
Sense of relationships with faculty:



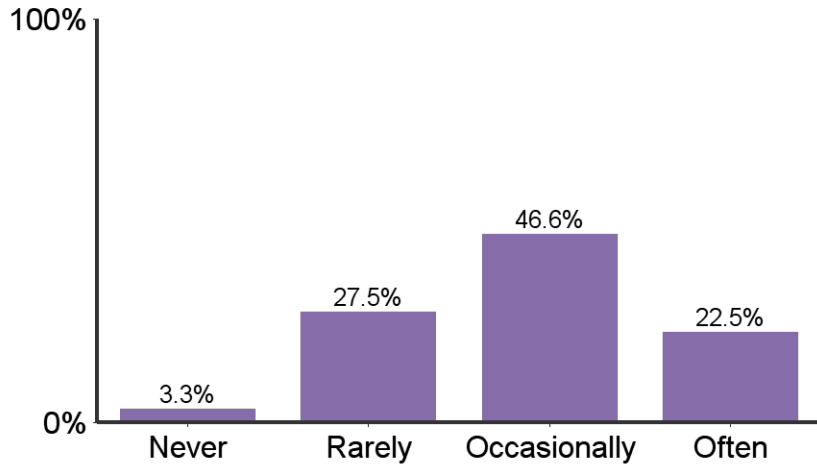
Sense of relationships with academic advisors:



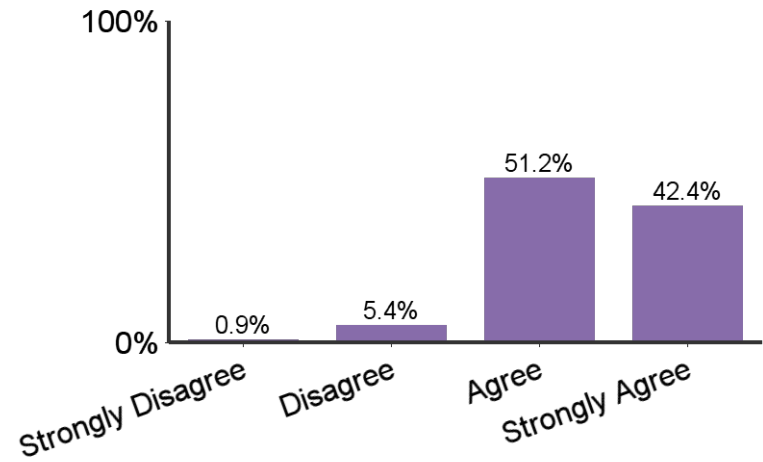
Sense of relationships with GTAs:



How often did you interact with faculty outside of class time?

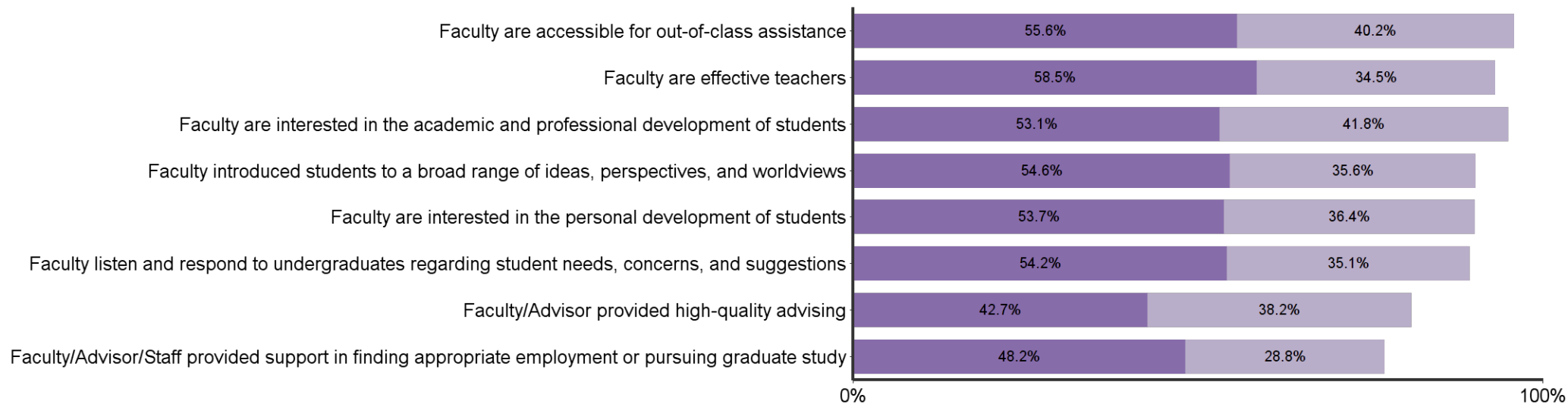


I found my major to be characterized by mutual respect between undergraduates and professors



In my major, faculty:

Agree Strongly Agree



Responses by Major

	Bar	Percent	Count
Arts and Sciences		23.3%	401
Human Ecology		19.4%	334
Agriculture		18.1%	311
Business Administration		14.7%	253
Engineering		14.6%	250
Education		7.3%	125
Technology and Aviation		2.6%	44
Total	-	100.0%	1718

Responses by Gender



	Bar	Percent	Count
Female		58.0%	997
Male		42.0%	721

Responses by Race/Ethnicity

	Bar	Percent	Count
WHITE		82.4%	1416
HISPANIC		6.9%	118
ASIAN		4.0%	68
BLACK		2.4%	41
MULTIRAC		2.3%	40
NOTSPEC		1.4%	24
AMERIND		0.5%	8
HAWPACI		0.2%	3

Responses by Semester

	Bar	Percent	Count
Spring		64.4%	1107
Fall		31.4%	539
Summer		4.2%	72

Responses by Citizenship Status			
	Bar	Percent	Count
Citizen		95.2%	1635
Non-Citizen		4.8%	83

Credit Hours Transferred to K-State	
	Mean
Transfer Credit Hours	32.1

K-State Undergraduate GPA of Respondents	
	Mean
GPA	3.3

Age of Respondents	
	Mean
Age	23.5

Please rate your level of awareness and satisfaction with the following K-State Offices

	Did Not Know About	Knew About, But Did Not Use	Used and was Dissatisfied	Used and was Satisfied	Count
Office of Student Financial Assistance	2.7%	42.0%	8.0%	47.3%	1432
Office of the Registrar	7.0%	33.5%	3.9%	55.5%	1426
Office of Non-Traditional and Veteran Student Services	34.1%	56.9%	1.4%	7.7%	1430
Office of Student Life	8.6%	64.4%	3.1%	23.8%	1426
Office of Diversity	29.6%	63.3%	1.8%	5.3%	1426
Office of Career and Employment Services	2.2%	28.3%	5.0%	64.5%	1427
Office of Student Activities & Services (activities carnival, SafeRide, student legal services, etc.)	11.8%	52.1%	2.1%	34.0%	1427
Office of Parking services	4.8%	24.7%	39.7%	30.9%	1430
Counseling Services	7.1%	72.4%	4.3%	16.3%	1429
Women's Center	26.7%	62.9%	1.6%	8.7%	1429
Student Access Center	34.1%	53.0%	2.0%	10.8%	1427
Academic and Career Information Center (assistance with exploring majors and matching your interests, abilities and values to possible occupations)	23.7%	50.4%	2.7%	23.2%	1429
Academic Assistance Center (PILOTS, study skills, testing services, University Experience, etc.)	32.8%	52.5%	2.8%	11.9%	1432
Educational Supportive Services (ESS) (TRiO, tutoring, writing and math assistance, etc.)	24.5%	51.1%	3.3%	21.1%	1429
Powercat Financial Counseling	13.3%	70.2%	1.8%	14.7%	1431

Please rate your level of awareness and satisfaction with the following Library services					
	Did Not Know About	Knew About, But Did Not Use	Used and was Dissatisfied	Used and was Satisfied	Count
Library facilities (atmosphere, available seating, hours)	0.9%	7.3%	5.0%	86.8%	1433
Library staff (assistance in research, effectively finding information, learning how to use the libraries)	1.4%	27.2%	2.5%	68.9%	1433
Library holdings (quality and quantity)	8.3%	36.3%	2.5%	52.8%	1429
Access to electronic library resources (databases, electronic journals, and electronic books)	1.9%	12.2%	3.4%	82.5%	1429

Please rate your level of awareness and satisfaction with the following Student Life Services:					
	Did Not Know About	Knew About, But Did Not Use	Used and was Dissatisfied	Used and was Satisfied	Count
Residence hall food service	3.6%	33.5%	7.1%	55.8%	1403
Residence hall facilities	3.5%	35.1%	9.4%	52.0%	1403
Residence hall services and programs	4.7%	41.2%	7.8%	46.3%	1402
Lafene Health Center	1.8%	23.4%	15.3%	59.5%	1402
K-State Student Union food service	1.4%	17.9%	8.9%	71.7%	1398
Union Program Council (UPC)	10.2%	41.2%	2.4%	46.2%	1395
Greek experience (fraternity/sorority)	4.6%	66.3%	4.6%	24.5%	1405
Recreation Services	2.6%	14.4%	2.4%	80.6%	1399
University Life Cafe	44.4%	44.8%	1.4%	9.4%	1403
Center for Child Development	25.9%	67.4%	0.8%	5.9%	1399
Multicultural Student Organizations	22.4%	66.6%	1.4%	9.6%	1400
Alcohol and other drug educational services	18.2%	58.5%	7.6%	15.7%	1399
Healthy Decisions (assists students with identifying sources of support)	40.8%	51.6%	1.3%	6.4%	1401

Please rate your level of awareness and satisfaction with the following Student Academic Services:					
	Did Not Know About	Knew About, But Did Not Use	Used and was Dissatisfied	Used and was Satisfied	Count
Recruitment materials and manner in which information was made available to you	20.8%	26.2%	3.8%	49.2%	1395
Admissions services and online application	5.2%	12.8%	3.5%	78.6%	1396
kSIS and its many applications	0.4%	2.6%	11.0%	86.0%	1394
DARS (Degree Audit Registration System)	0.9%	3.5%	10.8%	84.8%	1385
Scholarship House (Clovia, Smith, Smurthwaite)	20.1%	71.9%	1.6%	6.5%	1395
Developing Scholars Program	49.2%	43.8%	1.7%	5.3%	1389
McNair Scholars Program	52.7%	41.5%	1.4%	4.4%	1388
Convocations/Lectures (e.g. Landon, Lou Douglas, Dorothy Thompson, departmental, etc.)	27.2%	42.9%	1.5%	28.4%	1393
SALT (www.saltmoney.org/k-state) - A free online financial tool provided by Powercat Financial Counseling.	19.7%	61.3%	3.1%	15.9%	1393

Please rate your level of awareness and satisfaction with the following additional service/areas:					
	Did Not Know About	Knew About, But Did Not Use	Used and was Dissatisfied	Used and was Satisfied	Count
Parking availability	1.5%	12.7%	70.3%	15.5%	1404
Parking facilities (maintenance, appearance, etc.)	1.6%	14.1%	37.5%	46.8%	1401
Campus bookstore	0.6%	9.9%	20.4%	69.1%	1401
Campus safety	2.1%	25.7%	5.2%	67.1%	1397
McCain Performance Series	3.6%	36.9%	2.5%	57.0%	1399
Collegian (campus newspaper)	2.6%	30.3%	12.4%	54.7%	1398
Royal Purple Yearbook	7.3%	77.0%	3.2%	12.5%	1401

In your K-State experience, how often have you had discussions with people from the following groups?

	Never	Sometimes	Often	Very Often	Count	Average Value
People with political opinions of than your own	7.4%	38.6%	34.8%	19.2%	1530	2.7
People with religious beliefs other than your own	6.9%	39.8%	32.5%	20.8%	1530	2.7
People from economic situations other than your own	3.4%	28.3%	44.0%	24.2%	1528	2.9
People of races or ethnicities other than your own	2.7%	36.1%	37.0%	24.1%	1528	2.8

How often did your K-State courses include diverse perspectives (political views, religious beliefs, racial/ethnic backgrounds, gender identities, etc.) in activities, assignments, and discussions?

	Percent	Count
Never	8.4%	129
Sometimes	49.3%	754
Often	28.9%	442
Very Often	13.3%	204

What were your reasons for choosing the major? (Select all that apply)		
	Count	Percent
Interesting subject	1207	74.3%
Job Demand	562	34.6%
Meaningful contribution to society	775	47.7%
Influence of family	367	22.6%
Influence of friends	146	9.0%
Influence of professor	217	13.4%
Respected positions	422	26.0%
High salaries	327	20.1%
Challenge	466	28.7%
Enjoyed courses in the field	1029	63.3%
Friends in major	142	8.7%

What percentage of your courses at K-State did you complete through distance education (i.e. online, video conferencing, etc.)?		
	Count	Percent
I did not complete any courses through distance education; all of my courses were completed on-campus	434	26.6%
25% or less	1057	64.7%
26%-50%	71	4.3%
51%-75%	18	1.1%
76%-99%	17	1.0%
All of my courses were completed through distance education	36	2.2%
Total	1633	100.0%

During your time at K-State, how many of your courses included a service-learning component (such as a community or volunteer project)?		
	Count	Percent
None	683	41.9%
Some	900	55.1%
Most	48	2.9%
All	1	0.1%
Total	1632	100.0%

During your years at Kansas State University, how many hours per week, on average, did you spend in the following activities?					
	None	1-10	11-20	21-30	30+
Internship/Practicum	50.8%	19.5%	10.8%	5.9%	8.5%
On-campus employment	47.3%	16.7%	23.2%	8.9%	3.9%
Off-campus employment	38.2%	14.2%	20.8%	14.3%	12.5%
Volunteer (unpaid) activities	31.3%	53.2%	10.2%	2.5%	2.8%

What is your general attitude toward Kansas State University?		
	Count	Percent
Very Negative	10	0.6%
Negative	54	3.3%
Positive	642	39.3%
Very Positive	926	56.7%
Total	1632	100.0%

When you applied to K-State, either as a new freshmen or transfer student, it was your:		
	Count	Percent
First Choice	1321	81.0%
Second Choice	232	14.2%
Third Choice	45	2.8%
Last Choice	33	2.0%
Total	1631	100.0%

Would you recommend Kansas State University to others?		
	Count	Percent
Definitely No	14	0.9%
Probably No	58	3.6%
Probably Yes	436	26.7%
Definitely Yes	1124	68.9%
Total	1632	100.0%

Students in my major are:					
	Strongly Disagree	Disagree	Agree	Strongly Agree	Count
Career oriented	1.0%	4.4%	50.6%	44.1%	1606
Serious about their studies	0.8%	7.3%	58.5%	33.3%	1597
Supportive and helpful to each other in meeting the academic demands of the program	0.7%	5.6%	49.5%	44.2%	1604
Academically honest (do not cheat, plagiarize)	1.2%	5.1%	54.4%	39.2%	1604
Interested in a broad range of ideas from many disciplines	1.6%	12.2%	50.0%	36.2%	1607
Able to work well in groups	1.0%	7.4%	52.1%	39.5%	1605
Competitive with each other	1.9%	24.1%	46.7%	27.2%	1604

Students in my major are encouraged to:					
	Strongly Disagree	Disagree	Agree	Strongly Agree	Count
Become personally acquainted with the department's faculty	1.6%	11.4%	49.4%	37.6%	1603
Participate in professional interest groups	1.6%	15.9%	52.8%	29.7%	1601
Attend professional seminars and colloquia	2.1%	16.4%	51.0%	30.5%	1597
Become familiar with current and emerging technology	2.8%	16.8%	50.0%	30.4%	1599
Participate in research or creative projects with faculty or other students	2.5%	17.6%	51.8%	28.0%	1598

I found the major to be:

	Strongly Disagree	Disagree	Agree	Strongly Agree	Count
Characterized by mutual respect between undergraduate majors and professors	0.9%	5.4%	51.2%	42.4%	1581
Academically stimulating	1.0%	4.9%	47.9%	46.2%	1600

In my major:

	Strongly Disagree	Disagree	Agree	Strongly Agree	Count
Faculty are accessible for out-of-class assistance	0.9%	3.3%	55.6%	40.2%	1584
Faculty are effective teachers	0.9%	6.1%	58.5%	34.5%	1582
Faculty are interested in the academic and professional development of students	0.6%	4.5%	53.1%	41.8%	1578
Faculty introduced students to a broad range of ideas, perspectives, and worldviews	1.0%	8.7%	54.6%	35.6%	1581
Faculty are interested in the personal development of students	1.2%	8.7%	53.7%	36.4%	1581
Faculty listen and respond to undergraduates regarding student needs, concerns, and suggestions	1.5%	9.2%	54.2%	35.1%	1583
Faculty/Advisor provided high-quality advising	5.9%	13.2%	42.7%	38.2%	1581
Faculty/Advisor/Staff provided support in finding appropriate employment or pursuing graduate study	5.8%	17.2%	48.2%	28.8%	1578

Sense of belonging: (Rated on a scale 1 to 7, 1 being a sense of alienation and 7 a sense of belonging)		
	Count	Average Value
Relationships with other students, student groups, and activities	1495	5.5

Relationships with faculty and staff: (Rated on a scale of 1 to 7, 1 being unsympathetic, remote, unhelpful, and 7 approachable, understandable, helpful)		
	Count	Average Value
Relationships with faculty members	1462	5.6
Relationships with academic advisor(s)	1445	5.3
Relationships with Graduate Teaching Assistants (GTAs)	1328	4.5

How often did you interact with faculty outside of class time?		
	Count	Percent
Never	53	3.3%
Rarely	436	27.5%
Occasionally	739	46.6%
Often	357	22.5%
Total	1585	100.0%

Did you participate in an undergraduate research experience of creative endeavor?		
	Count	Percent
Yes	807	50.9%
No	777	49.1%
Total	1584	100.0%

How would you rate the contribution of your mentor research/creative experience?		
	Count	Percent of those who participated in research
Inadequate	37	4.7%
Fair	170	21.6%
Good	346	44.0%
Excellent	234	29.7%
Total	787	100.0%

To what extent did your research/creative experience contribute to your academic success?		
	Count	Percent of those who participated in research
None	46	5.9%
Little	156	19.9%
Somewhat	324	41.4%
Very Much	256	32.7%
Total	782	100.0%

Did your research/creative experience contribute to your career choice?		
	Count	Percent of those who participated in research
No	288	36.8%
Somewhat	302	38.6%
Definitely	193	24.6%
Total	783	100.0%

How many semesters were you involved in a research/creative endeavor?		
	Count	Percent of those who participated in research
1-2	467	59.6%
3-4	161	20.5%
5-6	98	12.5%
7-8	38	4.8%
9 or more	20	2.6%
Total	784	100.0%

What types of dissemination of your undergraduate research/creative endeavor did you successfully achieve? (select all that apply)		
	Count	Percent of those who participated in research
University research seminar presentation/poster	155	21.3%
Class presentation	493	67.8%
Poster at a conference outside of campus	87	12.0%
Oral presentation at a conference outside of campus	127	17.5%
Public performance/exhibition on campus	160	22.0%
Public performance/exhibition outside of campus	120	16.5%
Peer reviewed publication	132	18.2%
Other:	60	8.3%

As a result of your experience at Kansas State University, how much progress do you feel you have made in each of the following K-State 8 areas?						
	None	Little	Some	A Lot	Count	Average Value
Developed interpretive skills and heightened sensitivity to literature and the performing and visual arts.	8.5%	29.2%	39.2%	22.3%	1491	2.8
Developed academic research skills.	1.3%	11.2%	56.9%	46.7%	1494	3.3
Developed the ability to make ethical and thoughtful decisions.	1.3%	5.2%	37.3%	49.8%	1485	3.4
Explored alternative values, perspectives, and beliefs from around the world	3.2%	15.8%	41.2%	36.4%	1491	3.1
Realized the need to understand the past and thoughtfully consider the future.	2.1%	10.7%	42.9%	42.5%	1488	3.3
Developed an awareness of self and perspectives about U.S. society and how group affiliation affects perceptions and experiences.	2.9%	12.6%	47.1%	37.0%	1488	3.2
Developed the ability to evaluate scientific and technological claims related to the natural and physical world.	2.8%	16.7%	45.1%	37.3%	1490	3.1
Understand and analyze how individuals, groups and societies behave and influence on another and the natural environment.	2.2%	14.6%	41.2%	38.1%	1490	3.2

As a result of your experience at Kansas State University, how much progress do you feel you have made in each of the following Undergraduate Learning Outcomes?						
	None	Little	Some	A Lot	Count	Average Value
Gained a broad general education about different fields of knowledge	0.7%	3.1%	40.2%	56.0%	1529	3.5
Improved written communication skills	1.2%	8.2%	41.2%	49.4%	1522	3.4
Improved oral communication skills	1.5%	7.7%	36.4%	54.4%	1521	3.4
Improved graphic and technological communication skills	2.6%	17.1%	42.1%	38.2%	1521	3.2
Improved ability to think critically (analytically and logically)	1.0%	3.0%	31.8%	64.1%	1528	3.6
Developed own values and ethical standards	1.6%	7.1%	32.7%	58.6%	1527	3.5
Understand the ethical standards of your discipline or profession	1.0%	3.5%	31.9%	63.6%	1526	3.6
Ability to interact positively with people who are different from you	1.0%	4.7%	33.2%	61.1%	1526	3.5
Understand your abilities, interests, and personality	1.0%	4.5%	30.5%	64.0%	1526	3.6
Understand other people and their abilities, interests, and perspectives	0.7%	4.7%	39.0%	55.7%	1525	3.5
Ability to participate as a team member	1.3%	4.9%	36.4%	57.4%	1524	3.5
Developed good health habits and physical fitness	10.3%	23.0%	36.1%	30.6%	1527	2.9

Universities differ from one another in the extent to which they emphasize various aspects of student development. Think of your experience at Kansas State University. To what extent was each of the following emphasized? (Rated on a scale of 1 to 7, 1 being a weak emphasis and 7 strong emphasis)

	Count	Average Value
The development of academic, scholarly, and intellectual qualities	1404	5.7
The development of aesthetic, expressive, and creative qualities	1319	4.8
Being critical, evaluative, and analytical	1388	5.8
The development of vocational and occupational competence	1343	5.2
The personal relevance and practical value of your courses	1364	5.4

What are your plans after graduation?

	Count	%
Have a job that will continue after graduation	138	9.4%
Have a job lined up to begin after graduation	574	38.9%
Will begin to look for a job	308	20.9%
Pursue additional undergraduate education	33	2.2%
Will attend graduate school	338	22.9%
Volunteer service (Peace Corps, AmeriCorps, etc.)	8	0.5%
No plans for a job at this time	18	1.2%
Military	9	0.6%
Starting or raising a family	6	0.4%
Other	42	2.8%