

**Responses for this report only include seniors within the College, except where noted.*

	Human Ecology	University
Responses	336	1718
Initial Population	661	3672
Response Rate	50.8%	46.8%

Survey Information:

- The Senior Survey is designed to give undergraduate students the opportunity to reflect upon their K-State experiences. This information is used to improve the college experience for future students by identifying strengths in our programs as well as areas that need further development. The survey includes issues relating to satisfaction with K-State regarding academic programs, intellectual and personal growth, student services, and preparation for a career or a graduate/professional school.
- The survey is offered electronically (through Qualtrics) to seniors who have been cleared for graduation by their respective colleges

Table of Contents	
Introduction	1
Human Ecology Tables	2
Section I: Overall Satisfaction	3
Section IIa: 2025--Research, Scholarly, Creative Active Discovery	4
Section IIb: 2025--Undergraduate Educational Experience	6
Section IIc--Faculty and Staff	9
Section III: Demographics	11
Section IV: K-State Office and Services	13
Section V: Results Tables	16

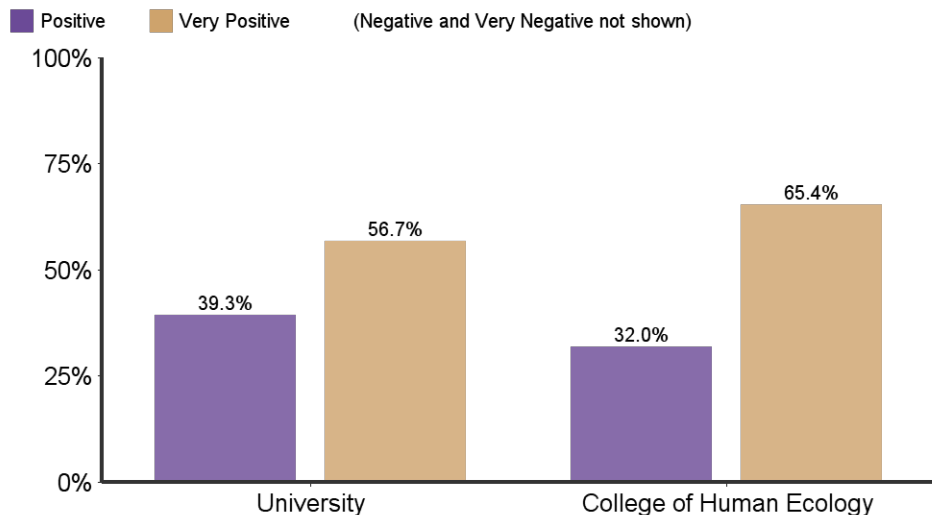
Did you participate in a practicum, internship, field experience, co-op experience, or clinical assignment in order to complete graduation requirements? If yes, please briefly describe this opportunity and how it impacted your educational experiences at K-State.

	Percent	Count
Yes	47.4%	148
No	52.6%	164

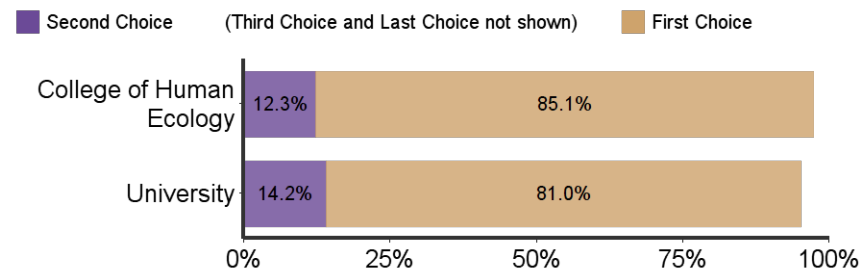
If you have NOT participated in any service/outreach experiences while at K-State, please indicate which of the following best describes your reason(s) (Please select all that apply)?

	Percent	Count
Time factor	23.8%	46
Money factor: too expensive	3.6%	7
Job factor: I had to work to pay for school	37.3%	72
Program factor: I did not have flexibility in my degree	6.7%	13
I had family obligations	8.3%	16
I was not made aware of these opportunities	9.8%	19
I did not have interest in these experiences	10.4%	20

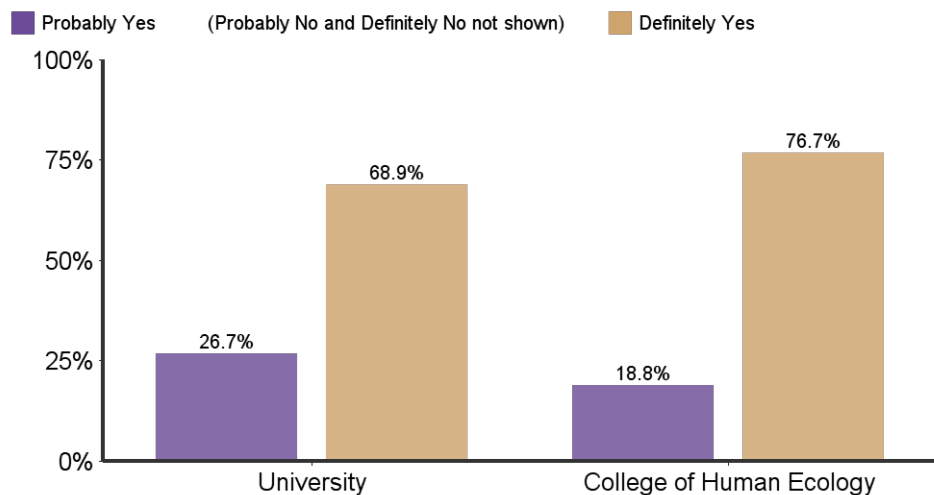
What is your general attitude toward K-State?



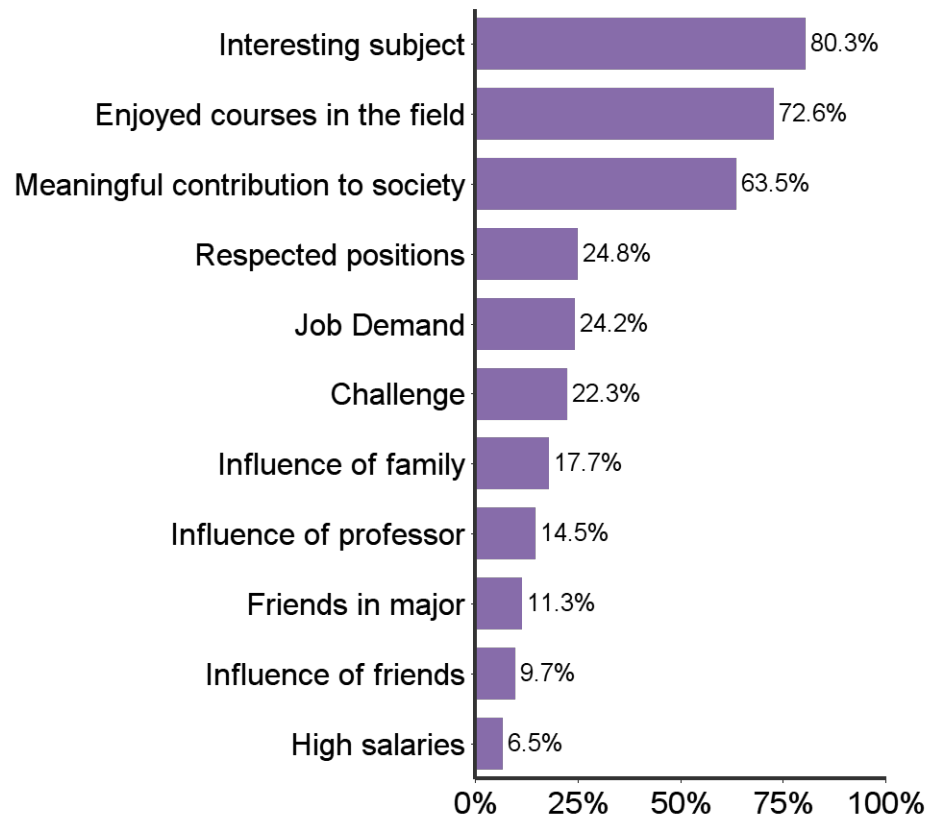
When you applied to K-State, it was your:



Would you recommend K-State to others?



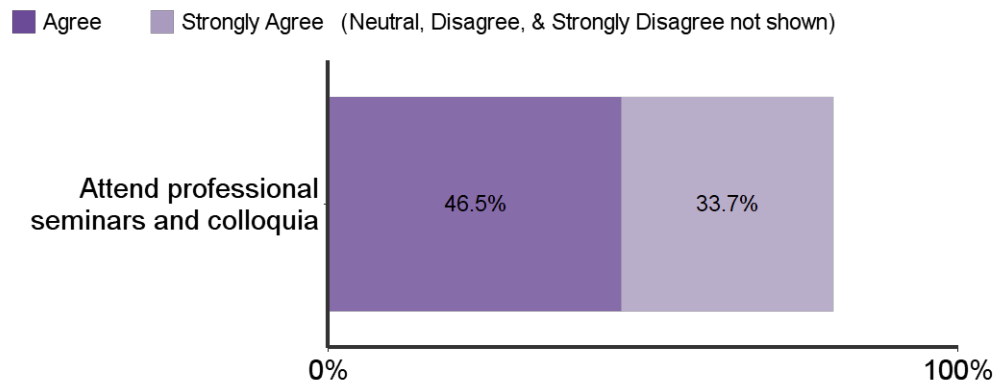
Reasons for choosing major



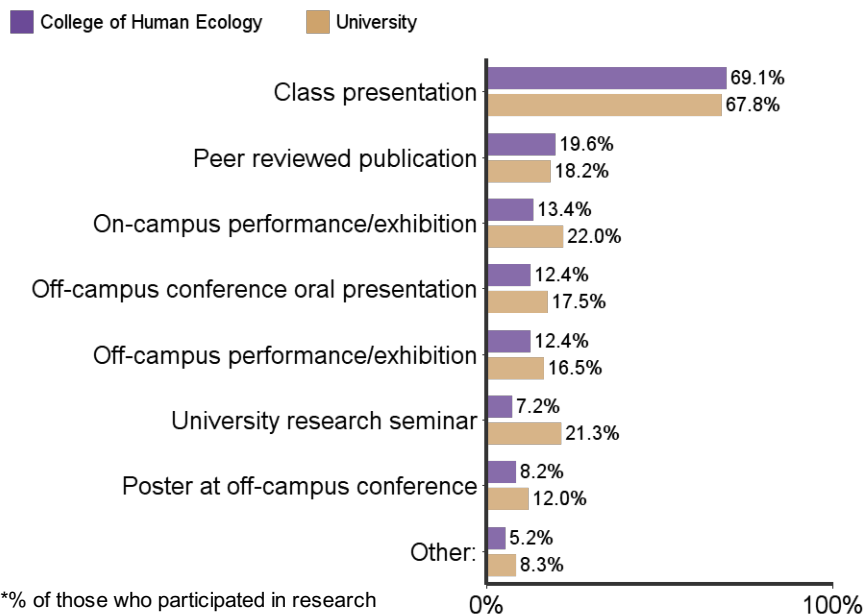
Have you participated in undergraduate research?



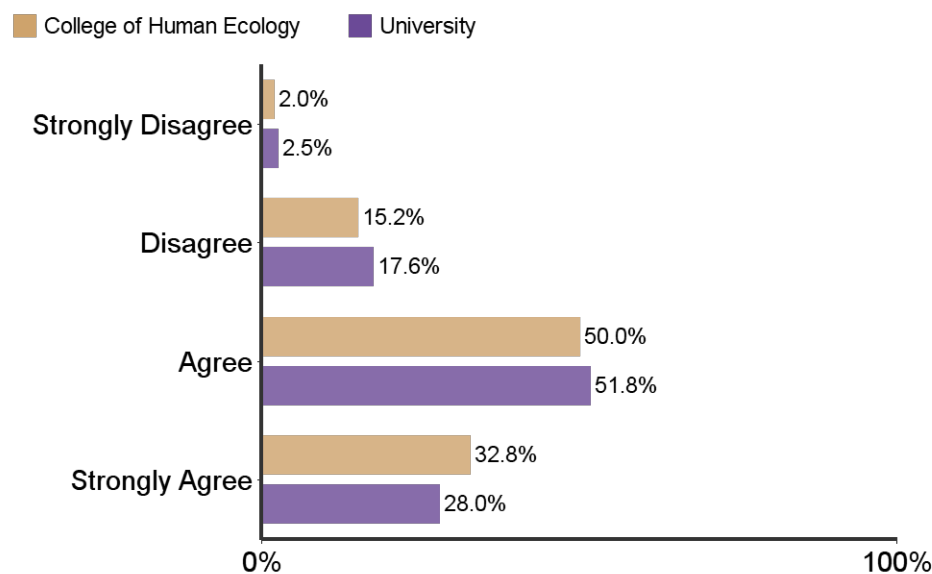
Students in my major are encouraged to:



What type(s) of research dissemination have you successfully achieved?

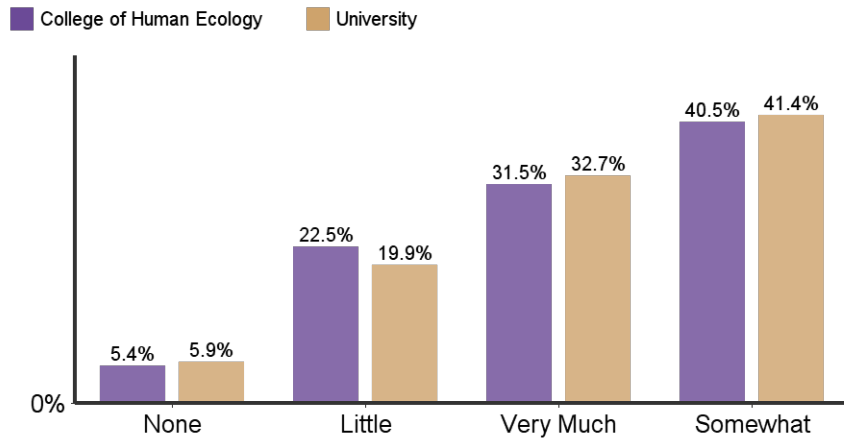


Students in my major are encouraged to participate in research/creative projects:

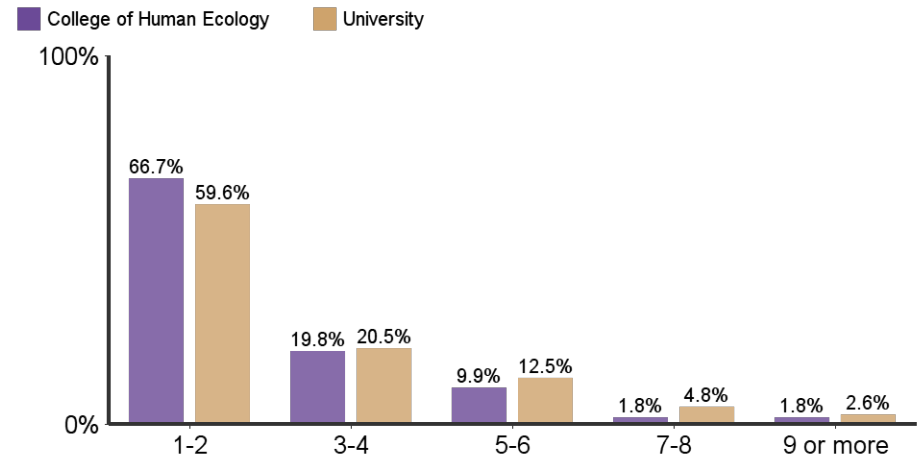


*All results on the corresponding page include only responses from those who participated in research.

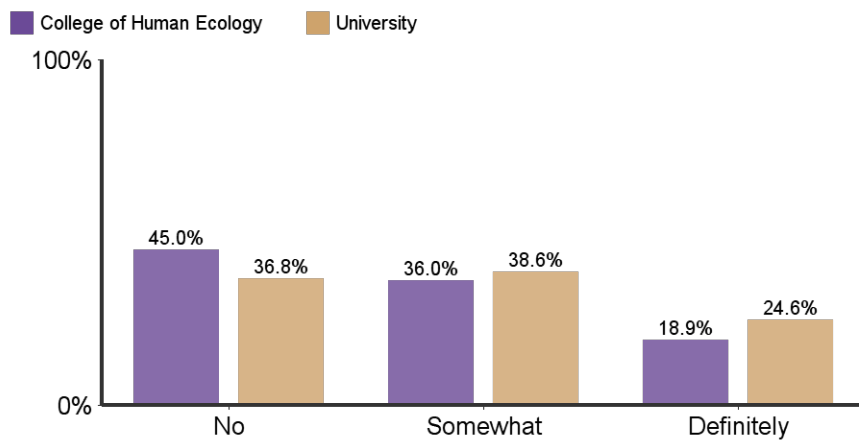
To what extent did your research experience contribute to your academic success?



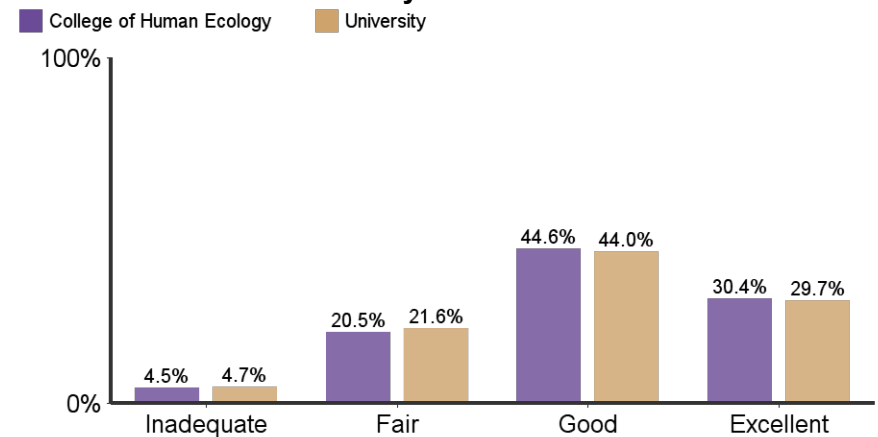
Number of semesters involved in a research or creative endeavor:

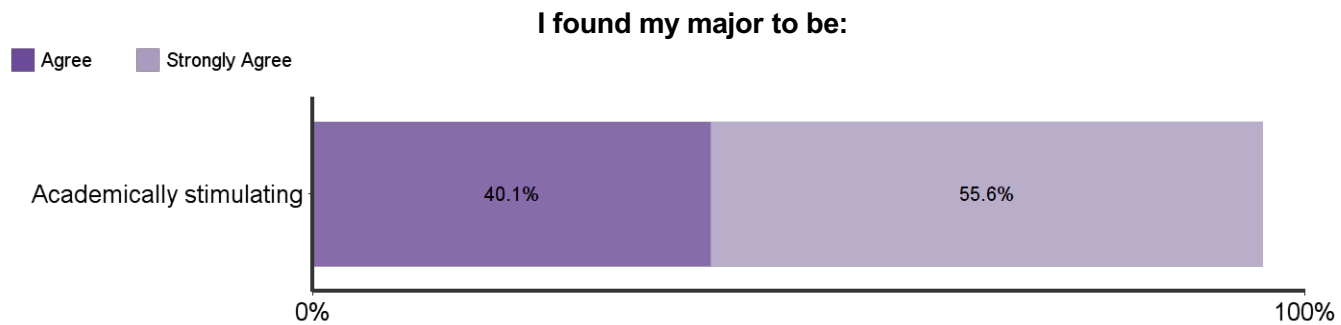
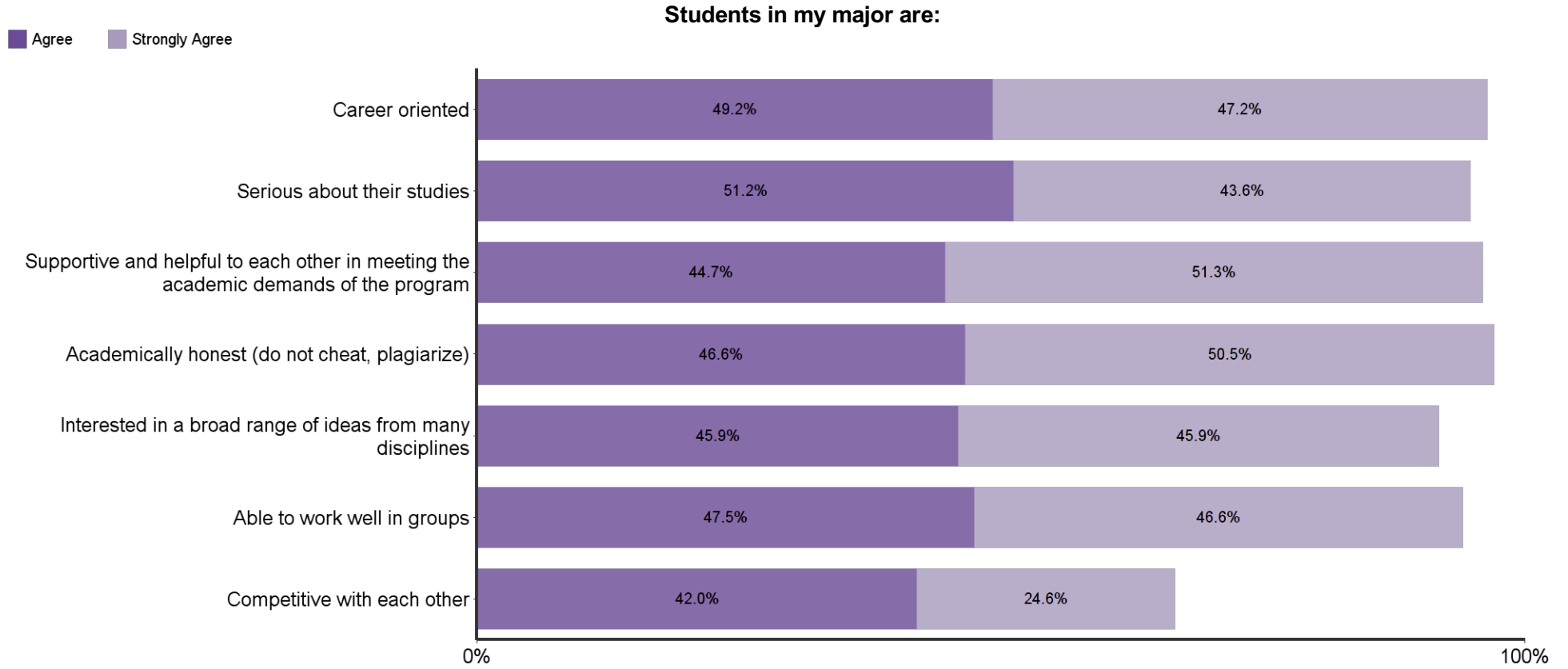


Did your research experience contribute to your career choice?

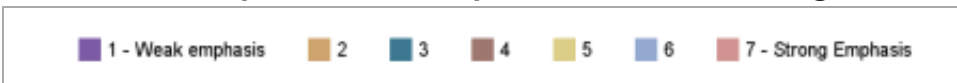


How would you rate the contribution of your mentor to your research?

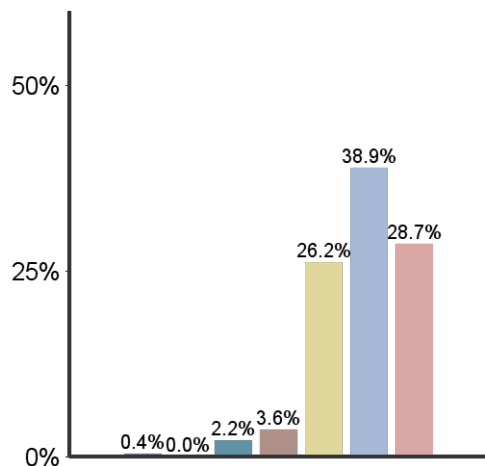




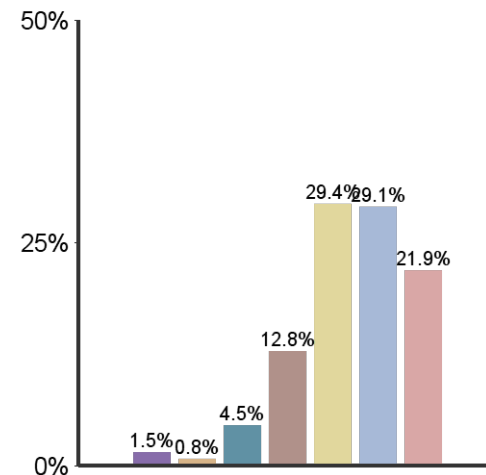
Emphasis K-State placed on the following:



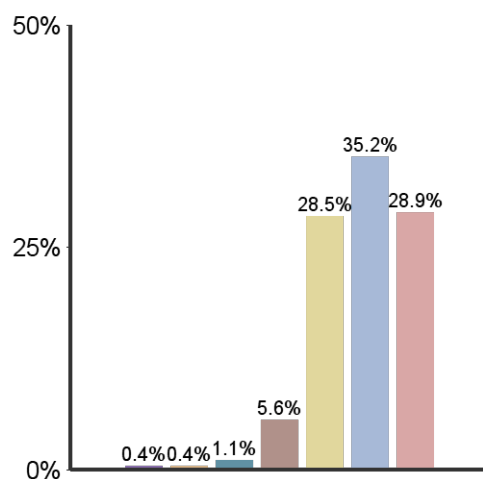
Academic & Scholarly Qualities



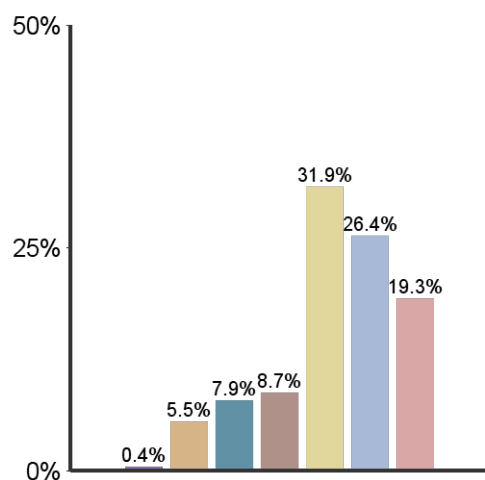
Vocational and occupational competence



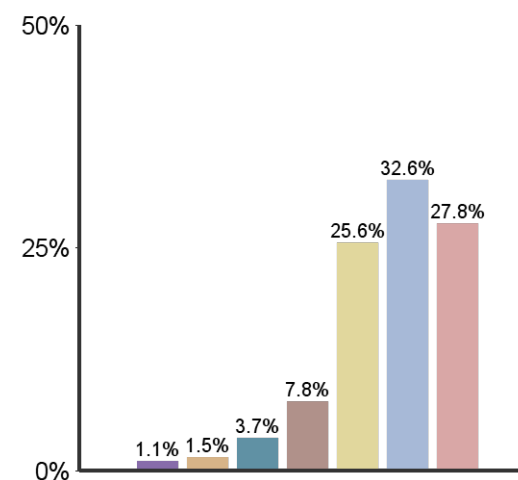
Being critical, evaluative, and analytical



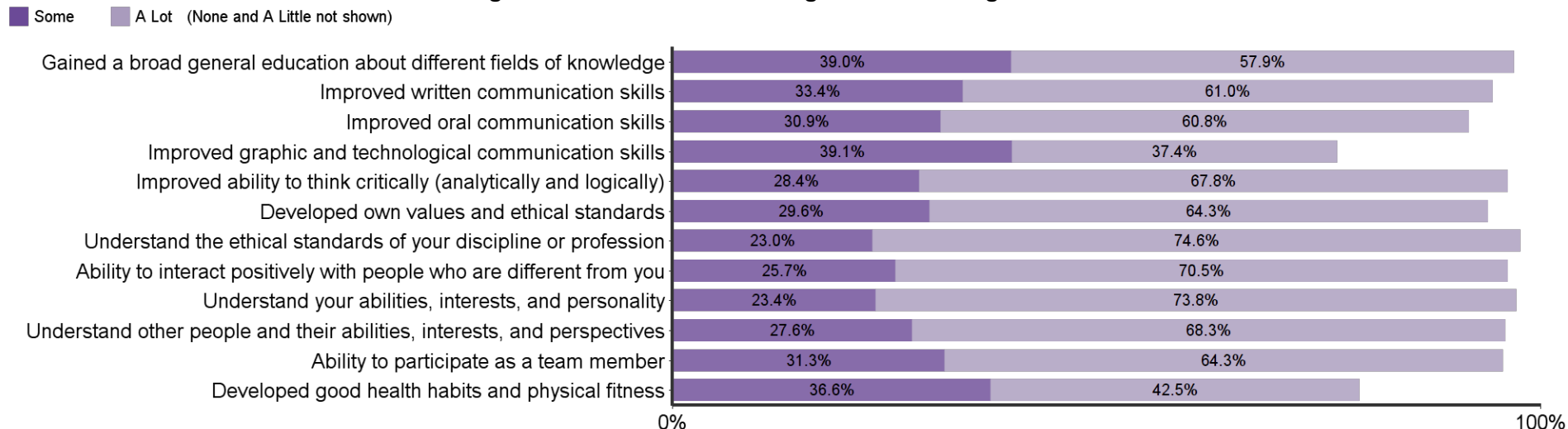
Aesthetic, expressive, & creative qualities



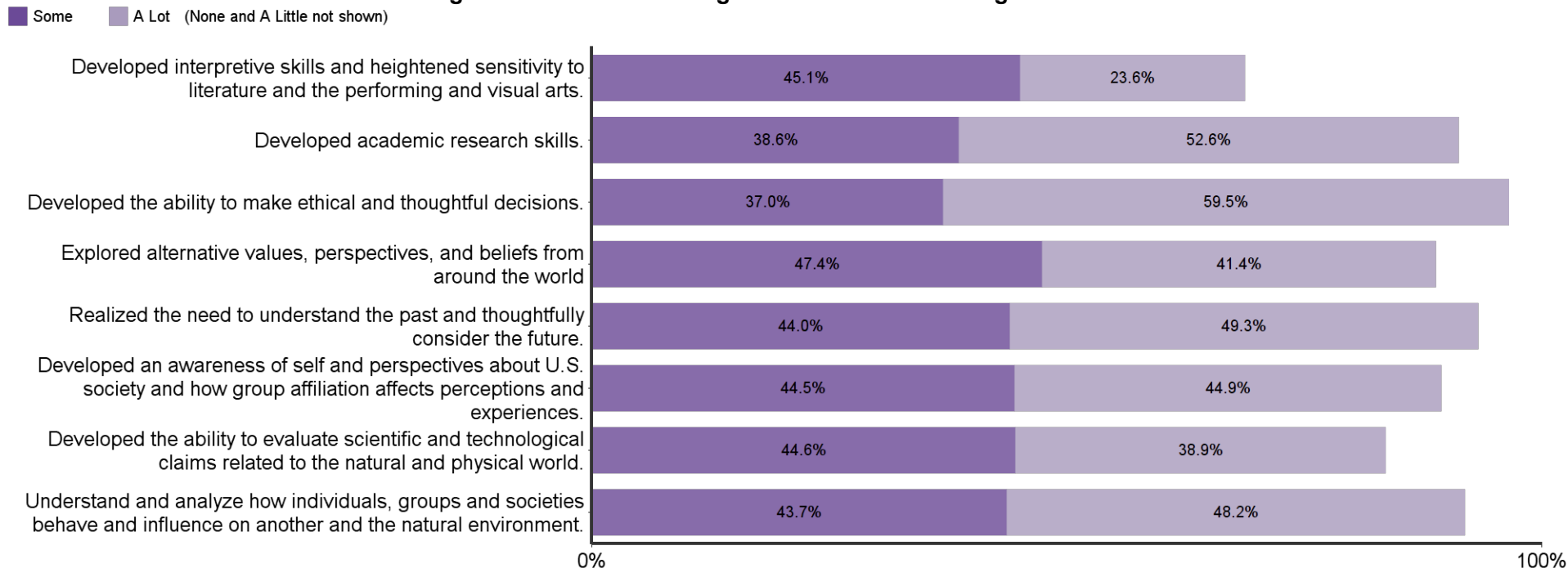
Personal relevance & practical value



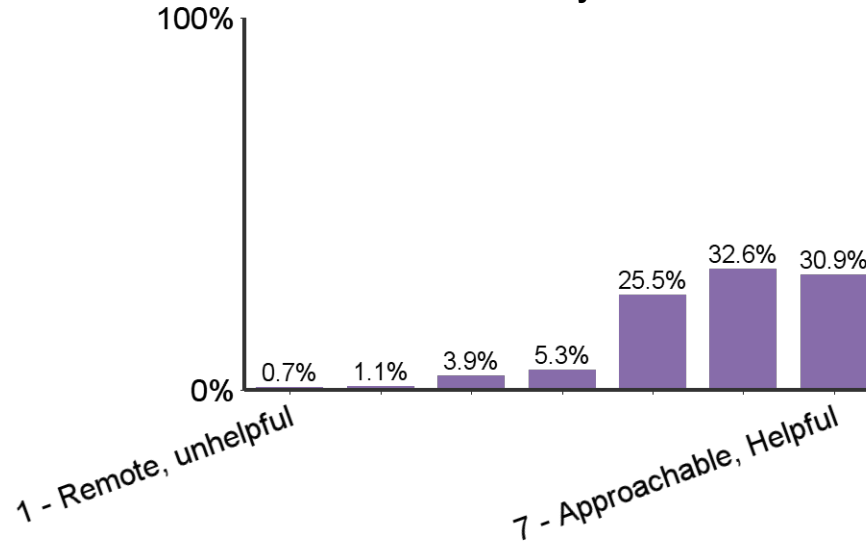
Progress made in K-State undergraduate learning outcomes:



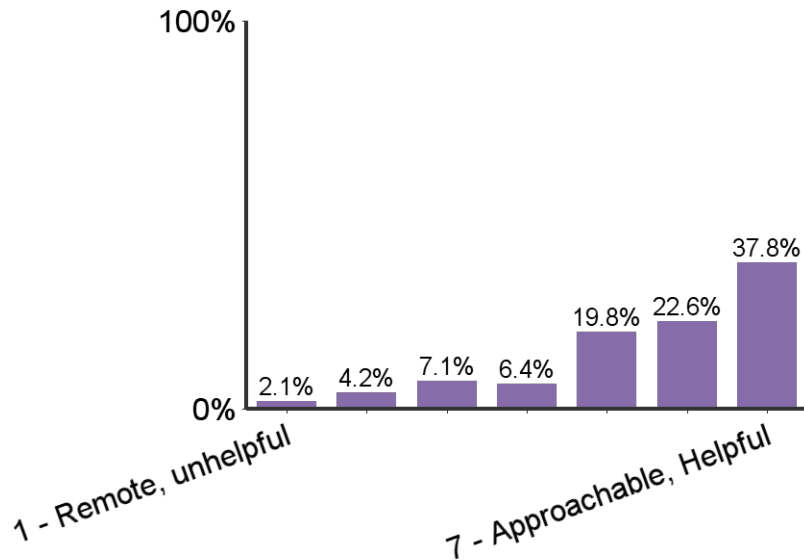
Progress made in K-State 8 general education learning outcomes



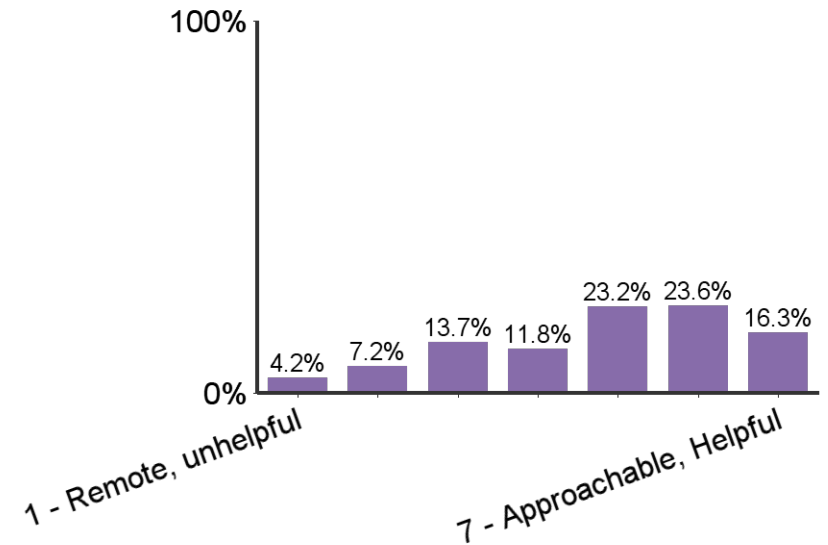
Sense of relationships with faculty:



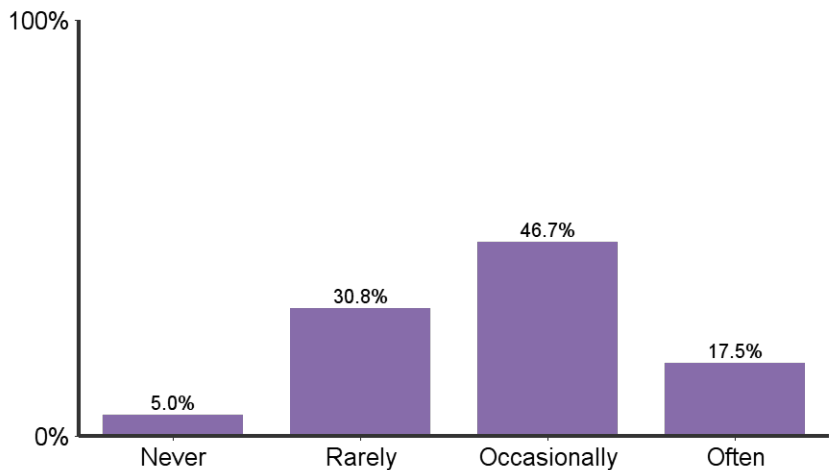
Sense of relationships with academic advisors:



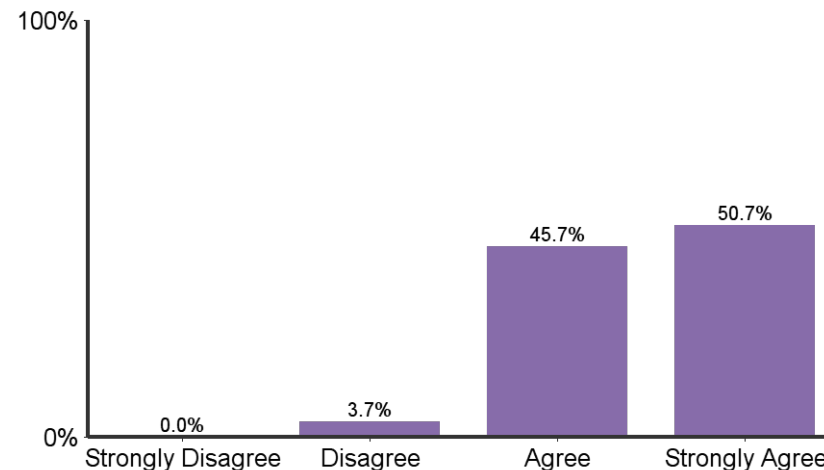
Sense of relationships with GTAs:



How often did you interact with faculty outside of class time?

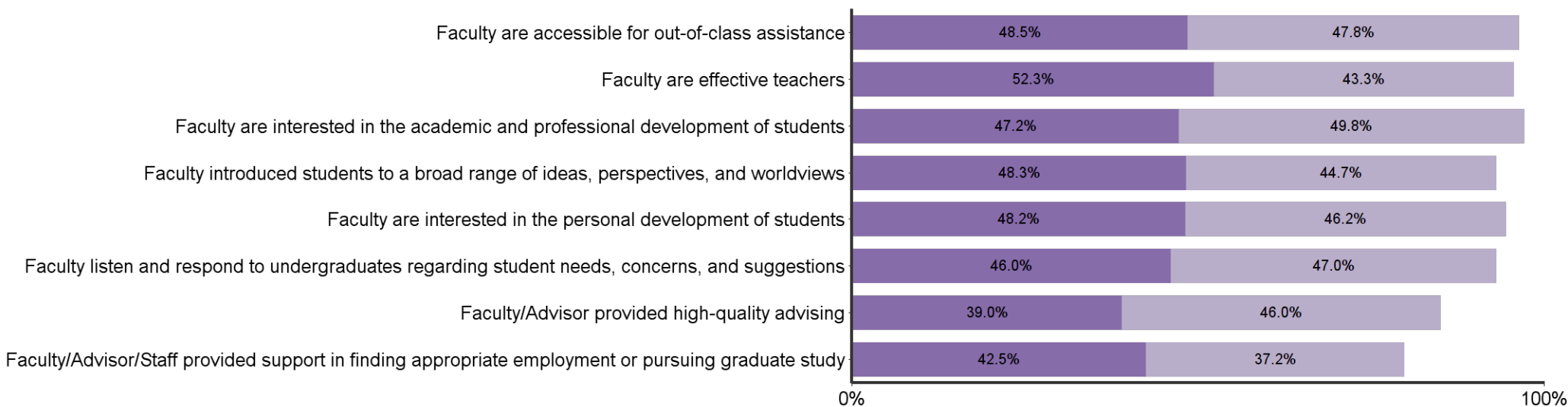


I found my major to be characterized by mutual respect between undergraduates and professors



In my major, faculty:

Agree Strongly Agree

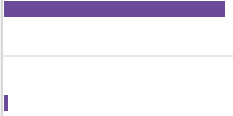


Responses by Major			
	Bar	Percent	Count
Family Stud & Human Serv		32.7%	110
Kinesiology		18.8%	63
Apparel And Textiles		6.8%	23
Dietetics		6.0%	20
Comm Scis & Disorders		5.1%	17
Nutrition and Health		4.8%	16
Hospitality Management		4.8%	16
Hotel And Restaurant Mgmt		4.2%	14
Interior Design		3.0%	10
Fam & Cons Sci Ed		2.7%	9
Personal Fin Plan		2.7%	9
Athletic Training		2.4%	8
Nutrition		2.4%	8
Nutritional Sciences		1.5%	5
Early Childhood Education		1.5%	5
Public Health Nutrition		0.9%	3
Total	-	100.0%	336

Responses by Gender			
	Bar	Percent	Count
Female		86.3%	290
Male		13.7%	46

Responses by Race/Ethnicity			
	Bar	Percent	Count
WHITE		86.9%	292
HISPANIC		4.5%	15
BLACK		2.7%	9
ASIAN		2.7%	9
MULTIRAC		1.8%	6
AMERIND		0.9%	3
HAWPACI		0.3%	1
NOTSPEC		0.3%	1

Responses by Semester			
	Bar	Percent	Count
Spring		71.7%	241
Fall		22.9%	77
Summer		5.4%	18

Responses by Citizenship Status			
	Bar	Percent	Count
Citizen		98.2%	330
Non-Citizen		1.8%	6

Credit Hours Transferred to K-State	
	Mean
Transfer Credit Hours	37.6

K-State Undergraduate GPA of Respondents	
	Mean
GPA	3.3

Age of Respondents	
	Mean
Age	23.8

Please rate your level of awareness and satisfaction with the following K-State Offices

	Did Not Know About	Knew About, But Did Not Use	Used and was Dissatisfied	Used and was Satisfied	Count
Office of Student Financial Assistance	1.1%	39.7%	8.5%	50.7%	282
Office of the Registrar	5.7%	34.3%	4.6%	55.4%	280
Office of Non-Traditional and Veteran Student Services	38.3%	50.7%	1.8%	9.2%	282
Office of Student Life	7.8%	58.9%	2.5%	30.9%	282
Office of Diversity	35.5%	56.7%	1.8%	6.0%	282
Office of Career and Employment Services	1.8%	24.1%	3.5%	70.6%	282
Office of Student Activities & Services (activities carnival, SafeRide, student legal services, etc.)	13.8%	50.4%	1.8%	34.0%	282
Office of Parking services	5.3%	30.1%	35.1%	29.4%	282
Counseling Services	6.4%	71.6%	3.9%	18.1%	282
Women's Center	25.5%	63.1%	1.8%	9.6%	282
Student Access Center	31.8%	51.8%	2.1%	14.3%	280
Academic and Career Information Center (assistance with exploring majors and matching your interests, abilities and values to possible occupations)	21.9%	45.9%	2.1%	30.0%	283
Academic Assistance Center (PILOTS, study skills, testing services, University Experience, etc.)	33.6%	48.1%	2.8%	15.5%	283
Educational Supportive Services (ESS) (TRIO, tutoring, writing and math assistance, etc.)	23.8%	51.8%	3.2%	21.3%	282
Powercat Financial Counseling	14.8%	59.0%	1.1%	25.1%	283

Please rate your level of awareness and satisfaction with the following Library services

	Did Not Know About	Knew About, But Did Not Use	Used and was Dissatisfied	Used and was Satisfied	Count
Library facilities (atmosphere, available seating, hours)	1.8%	9.9%	3.2%	85.2%	283
Library staff (assistance in research, effectively finding information, learning how to use the libraries)	2.1%	28.2%	2.1%	67.6%	284
Library holdings (quality and quantity)	10.6%	41.7%	1.1%	46.6%	283
Access to electronic library resources (databases, electronic journals, and electronic books)	1.8%	7.1%	2.8%	88.3%	283

Please rate your level of awareness and satisfaction with the following Student Life Services:

	Did Not Know About	Knew About, But Did Not Use	Used and was Dissatisfied	Used and was Satisfied	Count
Residence hall food service	4.0%	34.8%	4.0%	57.2%	276
Residence hall facilities	4.0%	35.1%	7.6%	53.3%	276
Residence hall services and programs	5.1%	40.9%	7.2%	46.7%	276
Lafene Health Center	3.3%	25.5%	13.1%	58.2%	275
K-State Student Union food service	2.9%	24.7%	4.0%	68.4%	275
Union Program Council (UPC)	11.7%	47.8%	2.2%	38.3%	274
Greek experience (fraternity/sorority)	5.4%	63.0%	4.3%	27.2%	276
Recreation Services	2.9%	17.2%	2.9%	77.0%	274
University Life Cafe	41.7%	45.3%	2.2%	10.9%	276
Center for Child Development	18.9%	69.5%	0.4%	11.3%	275
Multicultural Student Organizations	21.9%	66.8%	0.7%	10.6%	274
Alcohol and other drug educational services	18.9%	56.0%	6.9%	18.2%	275
Healthy Decisions (assists students with identifying sources of support)	39.5%	48.9%	1.4%	10.1%	276

Please rate your level of awareness and satisfaction with the following Student Academic Services:

	Did Not Know About	Knew About, But Did Not Use	Used and was Dissatisfied	Used and was Satisfied	Count
Recruitment materials and manner in which information was made available to you	22.9%	29.1%	3.3%	44.7%	275
Admissions services and online application	3.3%	11.6%	2.9%	82.2%	275
kSIS and its many applications	0.7%	2.9%	5.1%	91.3%	275
DARS (Degree Audit Registration System)	1.9%	5.6%	9.6%	83.0%	270
Scholarship House (Clovvia, Smith, Smurthwaite)	25.6%	66.7%	1.8%	5.9%	273
Developing Scholars Program	51.6%	41.4%	1.5%	5.5%	273
McNair Scholars Program	54.4%	39.8%	1.1%	4.7%	274
Convocations/Lectures (e.g. Landon, Lou Douglas, Dorothy Thompson, departmental, etc.)	34.2%	42.5%	1.8%	21.5%	275
SALT (www.saltmoney.org/k-state) - A free online financial tool provided by Powercat Financial Counseling.	18.9%	57.5%	1.8%	21.8%	275

Please rate your level of awareness and satisfaction with the following additional service/areas:

	Did Not Know About	Knew About, But Did Not Use	Used and was Dissatisfied	Used and was Satisfied	Count
Parking availability	3.6%	16.7%	64.5%	15.2%	276
Parking facilities (maintenance, appearance, etc.)	3.6%	16.7%	33.0%	46.7%	276
Campus bookstore	2.2%	11.3%	12.8%	73.7%	274
Campus safety	3.6%	33.1%	5.5%	57.8%	275
McCain Performance Series	4.7%	41.8%	2.9%	50.5%	275
Collegian (campus newspaper)	4.7%	38.7%	5.8%	50.7%	274
Royal Purple Yearbook	9.8%	77.1%	2.9%	10.2%	275

In your K-State experience, how often have you had discussions with people from the following groups?

	Never	Sometimes	Often	Very Often	Count	Average Value
People with political opinions of than your own	10.3%	42.1%	30.5%	17.1%	292	2.5
People with religious beliefs other than your own	6.8%	42.1%	29.5%	21.6%	292	2.7
People from economic situations other than your own	1.7%	34.6%	39.4%	24.3%	292	2.9
People of races or ethnicities other than your own	1.4%	36.4%	35.1%	27.1%	291	2.9

How often did your K-State courses include diverse perspectives (political views, religious beliefs, racial/ethnic backgrounds, gender identities, etc.) in activities, assignments, and discussions?

	Percent	Count
Never	4.8%	14
Sometimes	41.1%	120
Often	31.2%	91
Very Often	22.9%	67

What were your reasons for choosing the major? (Select all that apply)		
	Count	Percent
Interesting subject	249	80.3%
Job Demand	75	24.2%
Meaningful contribution to society	197	63.5%
Influence of family	55	17.7%
Influence of friends	30	9.7%
Influence of professor	45	14.5%
Respected positions	77	24.8%
High salaries	20	6.5%
Challenge	69	22.3%
Enjoyed courses in the field	225	72.6%
Friends in major	35	11.3%

What percentage of your courses at K-State did you complete through distance education (i.e. online, video conferencing, etc.)?		
	Count	Percent
I did not complete any courses through distance education; all of my courses were completed on-campus	39	12.6%
25% or less	207	67.0%
26%-50%	32	10.4%
51%-75%	5	1.6%
76%-99%	9	2.9%
All of my courses were completed through distance education	17	5.5%
Total	309	100.0%

During your time at K-State, how many of your courses included a service-learning component (such as a community or volunteer project)?		
	Count	Percent
None	65	21.0%
Some	218	70.6%
Most	25	8.1%
All	1	0.3%
Total	309	100.0%

During your years at Kansas State University, how many hours per week, on average, did you spend in the following activities?					
	None	1-10	11-20	21-30	30+
Internship/Practicum	50.8%	12.2%	10.5%	13.2%	6.1%
On-campus employment	58.2%	14.0%	18.2%	6.3%	3.2%
Off-campus employment	25.4%	16.1%	23.1%	19.7%	15.7%
Volunteer (unpaid) activities	20.0%	59.3%	13.7%	3.0%	4.0%

What is your general attitude toward Kansas State University?

	Count	Percent
Very Negative		
Negative	8	2.6%
Positive	99	32.0%
Very Positive	202	65.4%
Total	309	100.0%

When you applied to K-State, either as a new freshmen or transfer student, it was your:

	Count	Percent
First Choice	263	85.1%
Second Choice	38	12.3%
Third Choice	5	1.6%
Last Choice	3	1.0%
Total	309	100.0%

Would you recommend Kansas State University to others?

	Count	Percent
Definitely No		
Probably No	14	4.5%
Probably Yes	58	18.8%
Definitely Yes	237	76.7%
Total	309	100.0%

Students in my major are:					
	Strongly Disagree	Disagree	Agree	Strongly Agree	Count
Career oriented	0.7%	3.0%	49.2%	47.2%	305
Serious about their studies	0.3%	5.0%	51.2%	43.6%	303
Supportive and helpful to each other in meeting the academic demands of the program	0.3%	3.6%	44.7%	51.3%	302
Academically honest (do not cheat, plagiarize)	1.0%	2.0%	46.6%	50.5%	305
Interested in a broad range of ideas from many disciplines	0.3%	7.9%	45.9%	45.9%	305
Able to work well in groups	1.0%	4.9%	47.5%	46.6%	305
Competitive with each other	1.6%	31.8%	42.0%	24.6%	305

Students in my major are encouraged to:					
	Strongly Disagree	Disagree	Agree	Strongly Agree	Count
Become personally acquainted with the department's faculty	0.7%	10.5%	44.1%	44.7%	304
Participate in professional interest groups	1.0%	15.5%	47.9%	35.6%	303
Attend professional seminars and colloquia	1.7%	18.2%	46.5%	33.7%	303
Become familiar with current and emerging technology	3.0%	19.5%	52.0%	25.5%	302
Participate in research or creative projects with faculty or other students	2.0%	15.2%	50.0%	32.8%	302

I found the major to be:					
	Strongly Disagree	Disagree	Agree	Strongly Agree	Count
Characterized by mutual respect between undergraduate majors and professors	0.0%	3.7%	45.7%	50.7%	300
Academically stimulating	0.3%	4.0%	40.1%	55.6%	302

In my major:					
	Strongly Disagree	Disagree	Agree	Strongly Agree	Count
Faculty are accessible for out-of-class assistance	0.7%	3.0%	48.5%	47.8%	301
Faculty are effective teachers	0.0%	4.3%	52.3%	43.3%	300
Faculty are interested in the academic and professional development of students	0.3%	2.7%	47.2%	49.8%	299
Faculty introduced students to a broad range of ideas, perspectives, and worldviews	0.7%	6.3%	48.3%	44.7%	302
Faculty are interested in the personal development of students	0.3%	5.3%	48.2%	46.2%	301
Faculty listen and respond to undergraduates regarding student needs, concerns, and suggestions	1.0%	6.0%	46.0%	47.0%	302
Faculty/Advisor provided high-quality advising	2.3%	12.7%	39.0%	46.0%	300
Faculty/Advisor/Staff provided support in finding appropriate employment or pursuing graduate study	3.0%	17.3%	42.5%	37.2%	301

Sense of belonging: (Rated on a scale 1 to 7, 1 being a sense of alienation and 7 a sense of belonging)		
	Count	Average Value
Relationships with other students, student groups, and activities	285	5.6

Relationships with faculty and staff: (Rated on a scale of 1 to 7, 1 being unsympathetic, remote, unhelpful, and 7 approachable, understandable, helpful)		
	Count	Average Value
Relationships with faculty members	282	5.8
Relationships with academic advisor(s)	283	5.6
Relationships with Graduate Teaching Assistants (GTAs)	263	4.8

How often did you interact with faculty outside of class time?		
	Count	Percent
Never	15	5.0%
Rarely	93	30.8%
Occasionally	141	46.7%
Often	53	17.5%
Total	302	100.0%

Did you participate in an undergraduate research experience of creative endeavor?		
	Count	Percent
Yes	119	39.3%
No	184	60.7%
Total	303	100.0%

How would you rate the contribution of your mentor research/creative experience?		
	Count	Percent of those who participated in research
Inadequate	5	4.5%
Fair	23	20.5%
Good	50	44.6%
Excellent	34	30.4%
Total	112	100.0%

To what extent did your research/creative experience contribute to your academic success?		
	Count	Percent of those who participated in research
None	6	5.4%
Little	25	22.5%
Somewhat	45	40.5%
Very Much	35	31.5%
Total	111	100.0%

Did your research/creative experience contribute to your career choice?		
	Count	Percent of those who participated in research
No	50	45.0%
Somewhat	40	36.0%
Definitely	21	18.9%
Total	111	100.0%

How many semesters were you involved in a research/creative endeavor?		
	Count	Percent of those who participated in research
1-2	74	66.7%
3-4	22	19.8%
5-6	11	9.9%
7-8	2	1.8%
9 or more	2	1.8%
Total	111	100.0%

What types of dissemination of your undergraduate research/creative endeavor did you successfully achieve? (select all that apply)		
	Count	Percent of those who participated in research
University research seminar presentation/poster	7	7.2%
Class presentation	67	69.1%
Poster at a conference outside of campus	8	8.2%
Oral presentation at a conference outside of campus	12	12.4%
Public performance/exhibition on campus	13	13.4%
Public performance/exhibition outside of campus	12	12.4%
Peer reviewed publication	19	19.6%
Other:	5	5.2%

As a result of your experience at Kansas State University, how much progress do you feel you have made in each of the following K-State 8 areas?						
	None	Little	Some	A Lot	Count	Average Value
Developed interpretive skills and heightened sensitivity to literature and the performing and visual arts.	7.7%	23.6%	39.2%	23.6%	284	2.8
Developed academic research skills.	0.0%	8.8%	56.9%	52.6%	285	3.4
Developed the ability to make ethical and thoughtful decisions.	0.4%	3.2%	37.3%	59.5%	284	3.6
Explored alternative values, perspectives, and beliefs from around the world	1.4%	9.8%	41.2%	41.4%	285	3.3
Realized the need to understand the past and thoughtfully consider the future.	0.4%	6.3%	42.9%	49.3%	284	3.4
Developed an awareness of self and perspectives about U.S. society and how group affiliation affects perceptions and experiences.	0.7%	9.9%	47.1%	44.9%	283	3.3
Developed the ability to evaluate scientific and technological claims related to the natural and physical world.	2.1%	14.4%	45.1%	38.9%	285	3.2
Understand and analyze how individuals, groups and societies behave and influence on another and the natural environment.	0.7%	7.4%	41.2%	48.2%	284	3.4

As a result of your experience at Kansas State University, how much progress do you feel you have made in each of the following Undergraduate Learning Outcomes?						
	None	Little	Some	A Lot	Count	Average Value
Gained a broad general education about different fields of knowledge	0.7%	2.4%	39.0%	57.9%	290	3.5
Improved written communication skills	1.0%	4.5%	33.4%	61.0%	290	3.5
Improved oral communication skills	0.7%	7.6%	30.9%	60.8%	288	3.5
Improved graphic and technological communication skills	3.5%	20.1%	39.1%	37.4%	289	3.1
Improved ability to think critically (analytically and logically)	0.3%	3.4%	28.4%	67.8%	292	3.6
Developed own values and ethical standards	1.0%	5.2%	29.6%	64.3%	291	3.6
Understand the ethical standards of your discipline or profession	0.7%	1.7%	23.0%	74.6%	291	3.7
Ability to interact positively with people who are different from you	0.7%	3.1%	25.7%	70.5%	292	3.7
Understand your abilities, interests, and personality	0.7%	2.1%	23.4%	73.8%	290	3.7
Understand other people and their abilities, interests, and perspectives	0.0%	4.1%	27.6%	68.3%	290	3.6
Ability to participate as a team member	1.0%	3.4%	31.3%	64.3%	291	3.6
Developed good health habits and physical fitness	6.5%	14.4%	36.6%	42.5%	292	3.2

Universities differ from one another in the extent to which they emphasize various aspects of student development. Think of your experience at Kansas State University. To what extent was each of the following emphasized? (Rated on a scale of 1 to 7, 1 being a weak emphasis and 7 strong emphasis)

	Count	Average Value
The development of academic, scholarly, and intellectual qualities	275	5.9
The development of aesthetic, expressive, and creative qualities	254	5.2
Being critical, evaluative, and analytical	270	5.8
The development of vocational and occupational competence	265	5.4
The personal relevance and practical value of your courses	270	5.6

What are your plans after graduation?

	Count	%
Have a job that will continue after graduation	28	9.8%
Have a job lined up to begin after graduation	60	21.1%
Will begin to look for a job	69	24.2%
Pursue additional undergraduate education	14	4.9%
Will attend graduate school	93	32.6%
Volunteer service (Peace Corps, AmeriCorps, etc.)	2	0.7%
No plans for a job at this time	5	1.8%
Military	1	0.4%
Starting or raising a family	1	0.4%
Other	12	4.2%