

*\*Responses for this report only include seniors within the College, except where noted.*

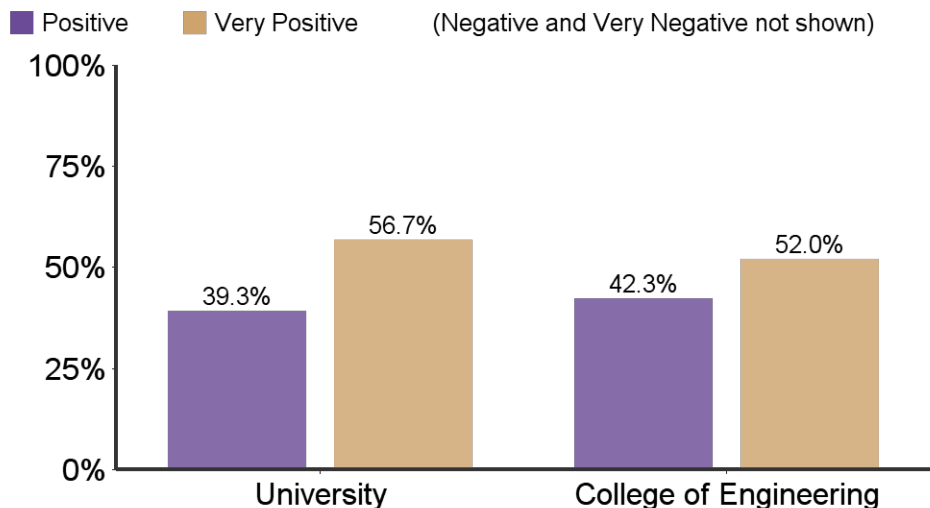
	<b>Engineering</b>	<b>University</b>
Responses	<b>252</b>	1718
Initial Population	<b>494</b>	3672
Response Rate	<b>51%</b>	46.8%

**Survey Information:**

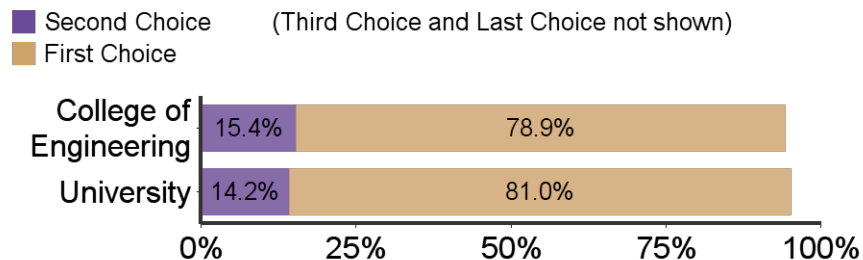
- The Senior Survey is designed to give undergraduate students the opportunity to reflect upon their K-State experiences. This information is used to improve the college experience for future students by identifying strengths in our programs as well as areas that need further development. The survey includes issues relating to satisfaction with K-State regarding academic programs, intellectual and personal growth, student services, and preparation for a career or a graduate/professional school.
- The survey is offered electronically (through Qualtrics) to seniors who have been cleared for graduation by their respective colleges

Table of Contents	
Introduction	1
Section I: Overall Satisfaction	2
Section IIa: 2025--Research, Scholarly, Creative Active Discovery	3
Section IIb: 2025--Undergraduate Educational Experience	5
Section IIc--Faculty and Staff	8
Section III: Demographics	10
Section IV: K-State Office and Services	12
Section V: Results Tables	15

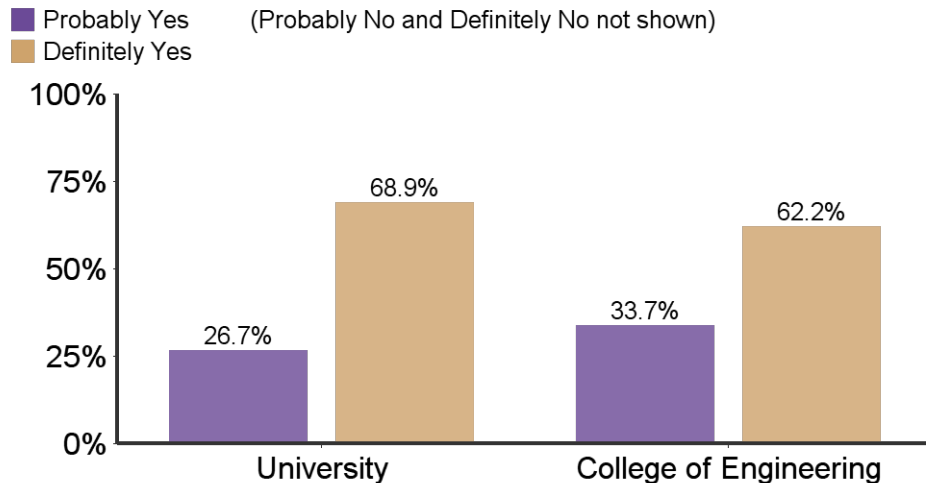
**What is your general attitude toward K-State?**



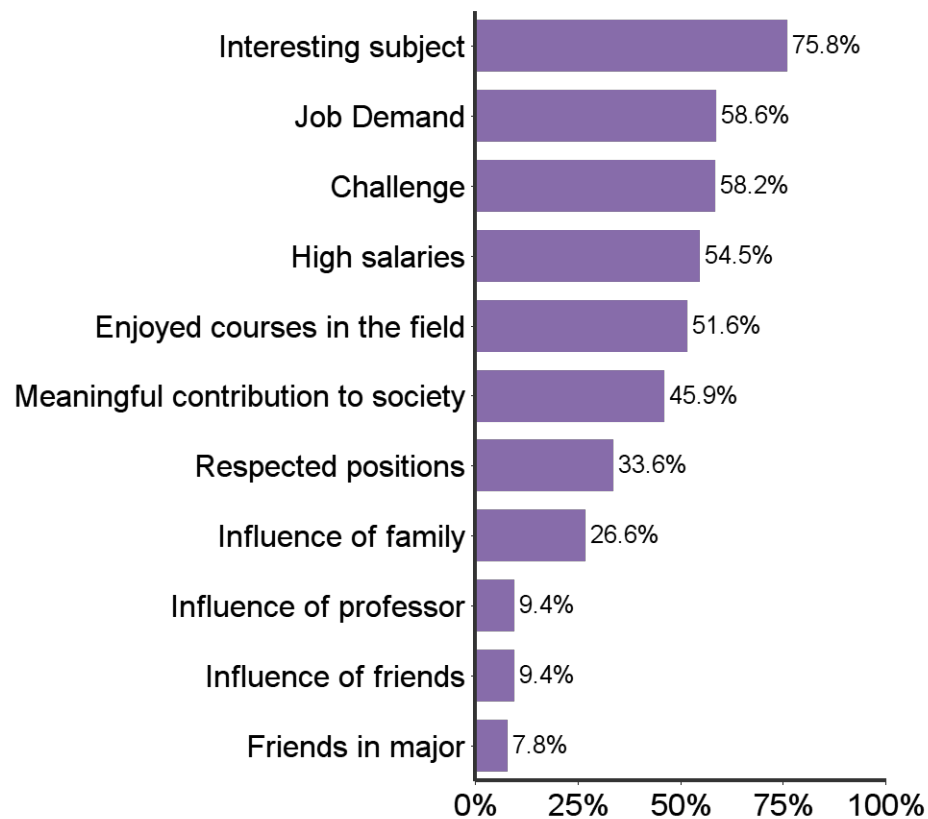
**When you applied to K-State, it was your:**



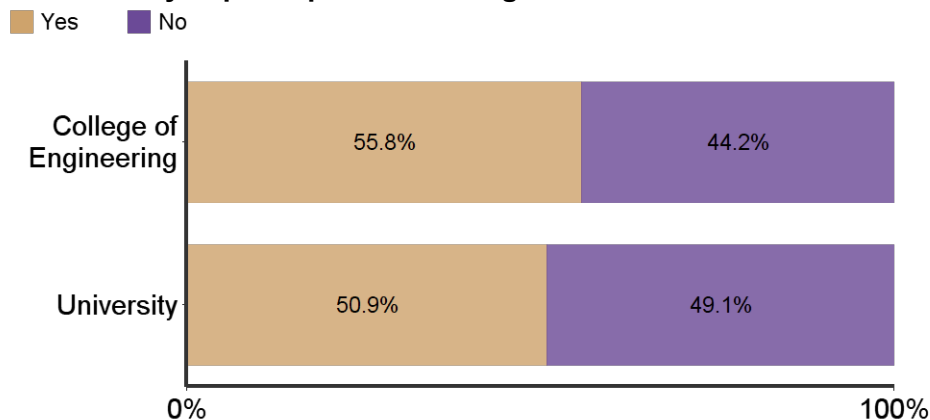
**Would you recommend K-State to others?**



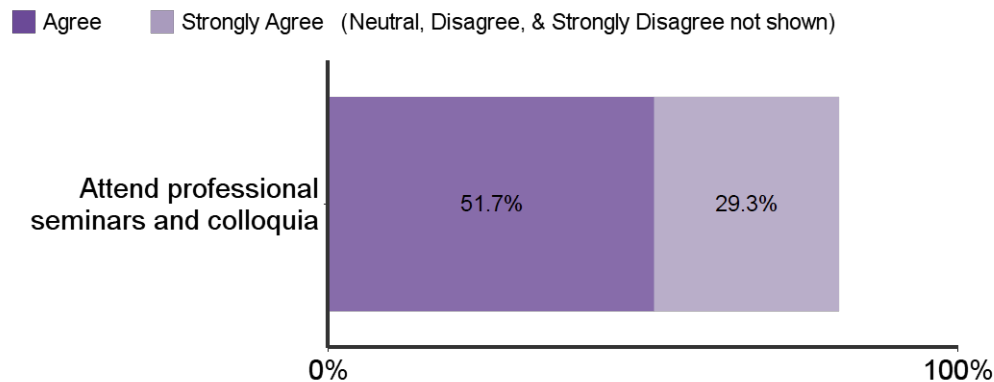
**Reasons for choosing major**



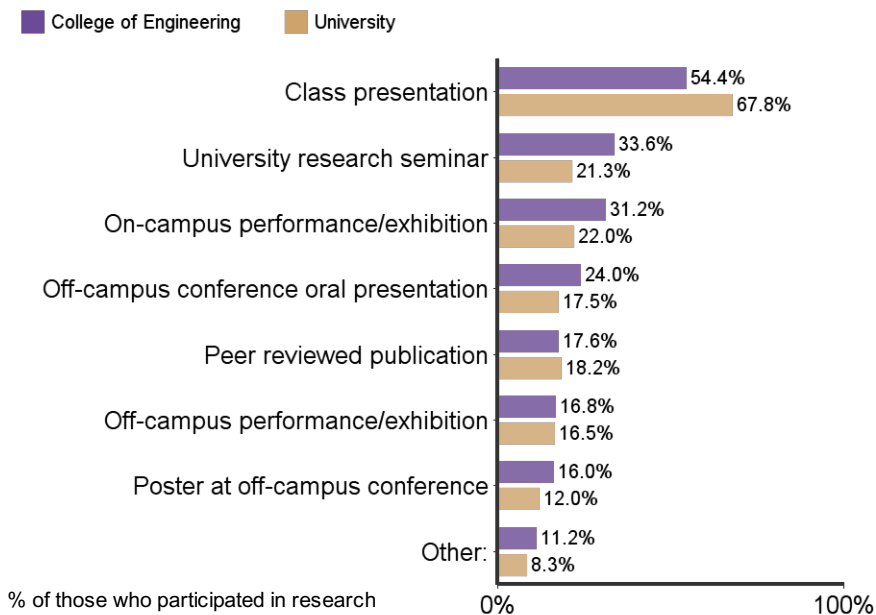
**Have you participated in undergraduate research?**



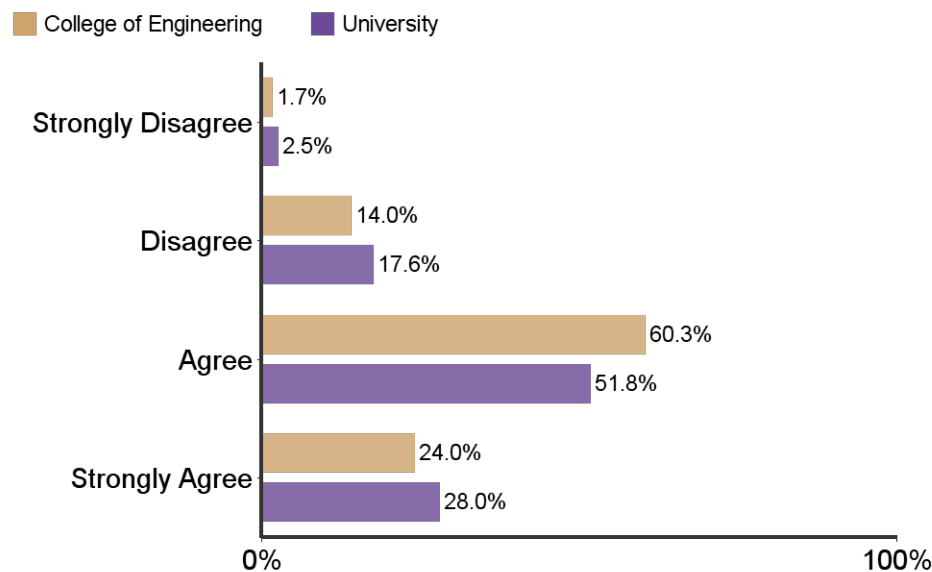
**Students in my major are encouraged to:**



**What type(s) of research dissemination have you successfully achieved?**

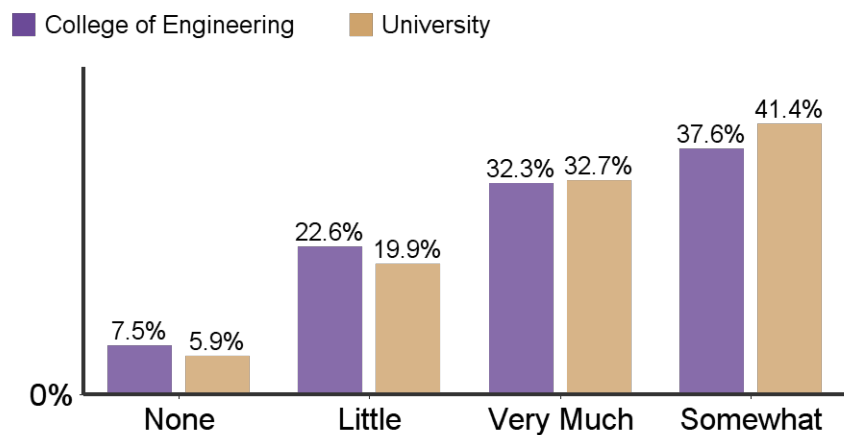


**Students in my major are encouraged to participate in research/creative projects:**

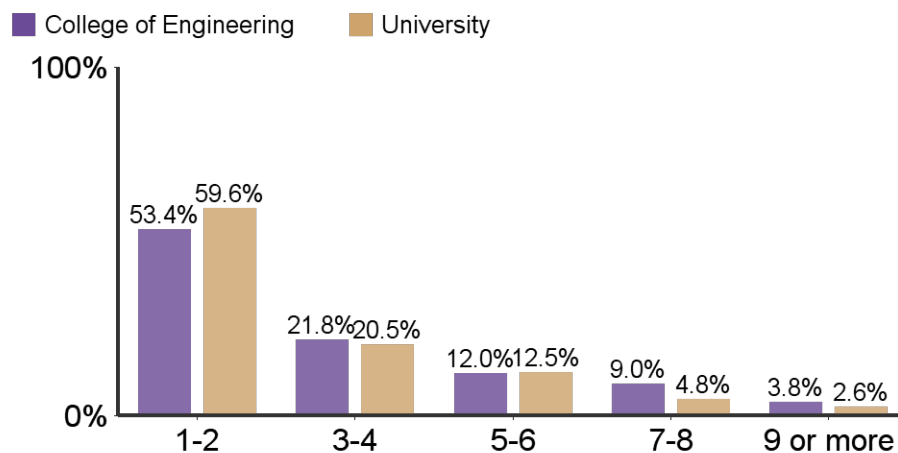


\*All results on the corresponding page include only responses from those who participated in research.

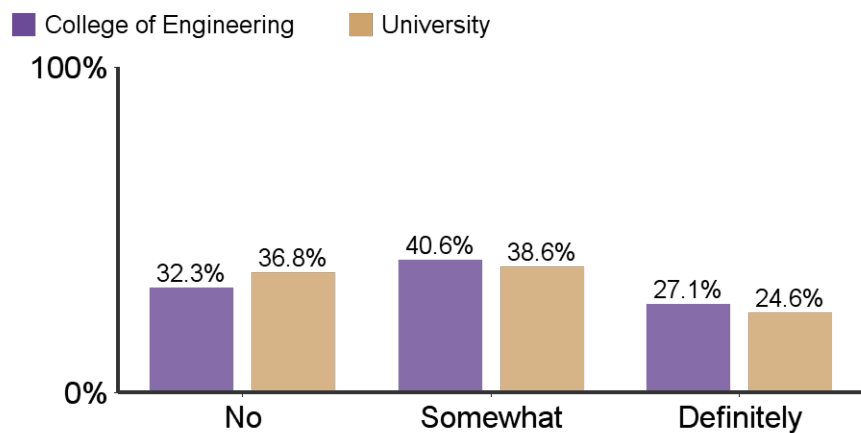
**To what extent did your research experience contribute to your academic success?**



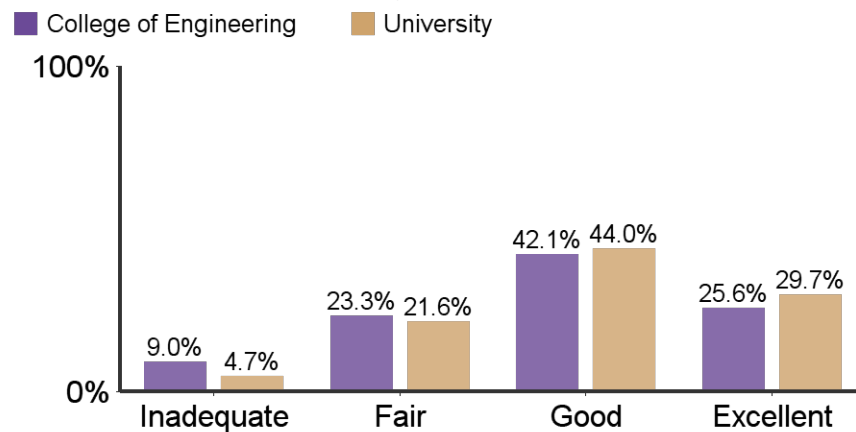
**Number of semesters involved in a research or creative endeavor:**

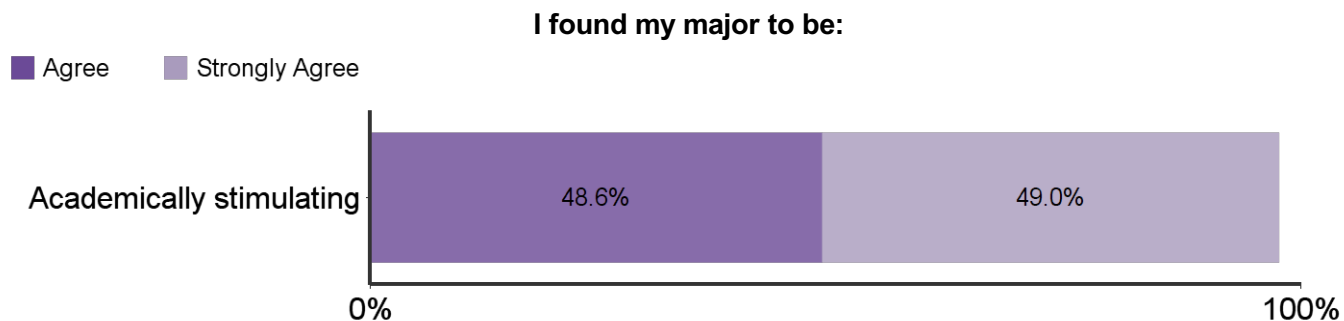
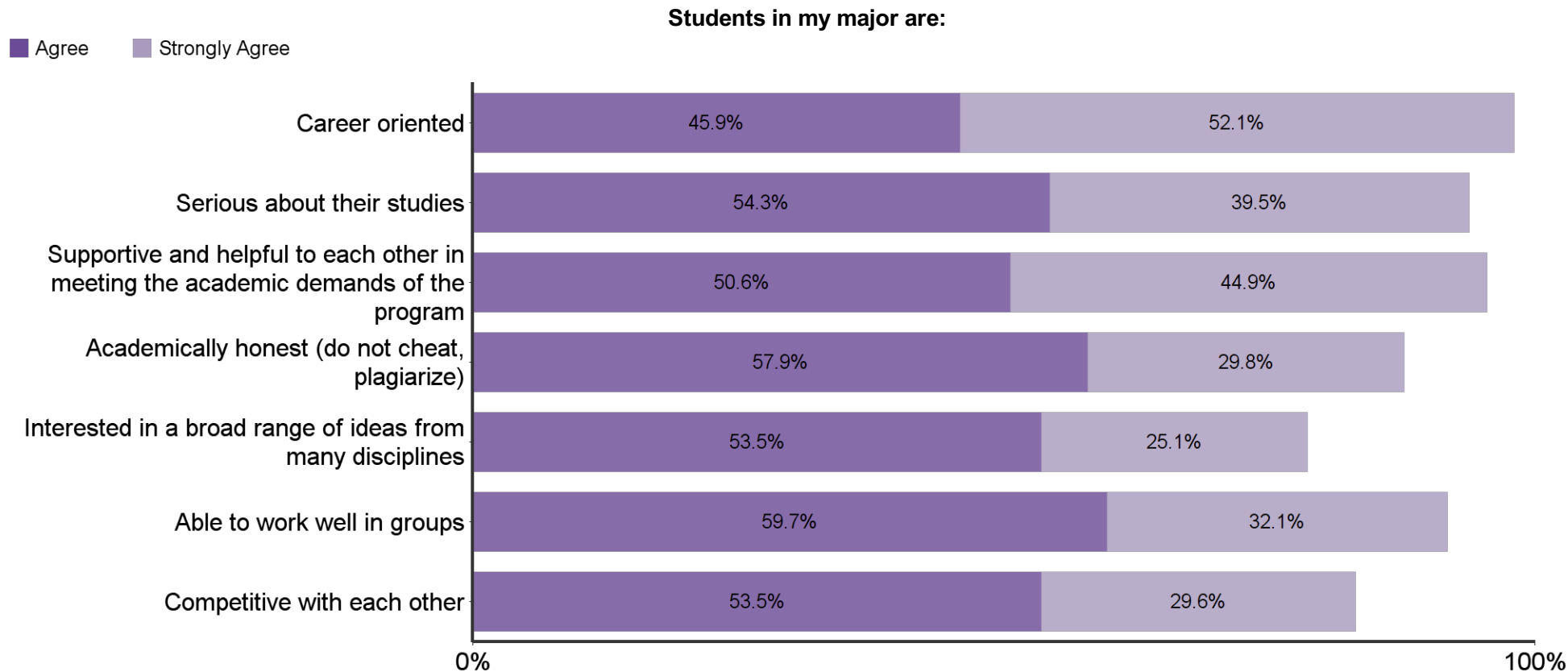


**Did your research experience contribute to your career choice?**



**How would you rate the contribution of your mentor to your research?**

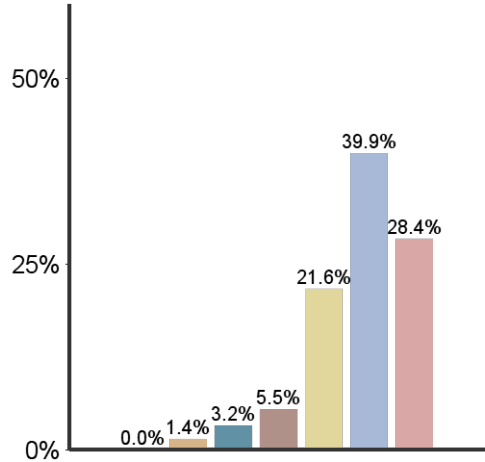




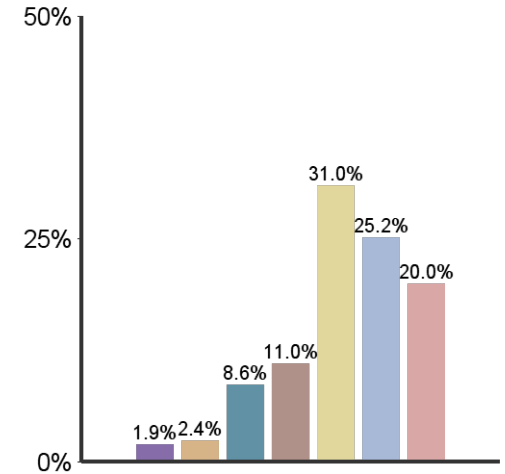
**Emphasis K-State placed on the following:**



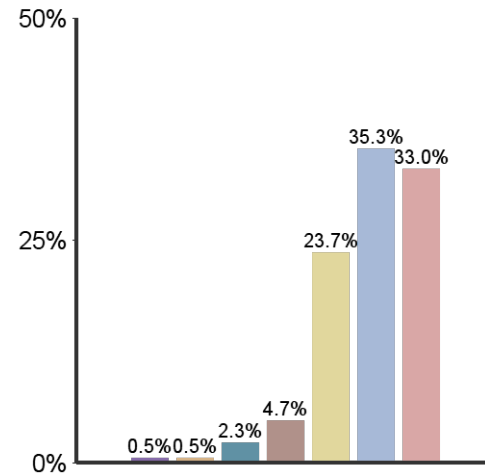
**Academic & Scholarly Qualities**



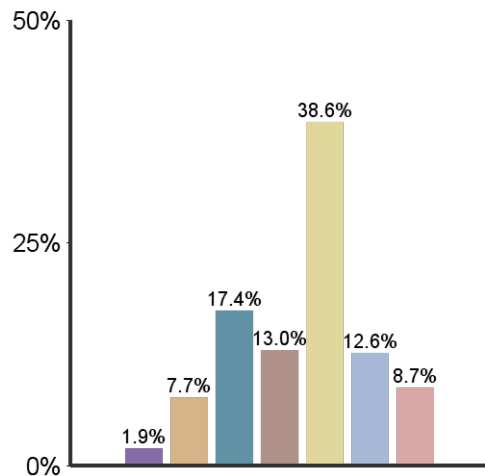
**Vocational and occupational competence**



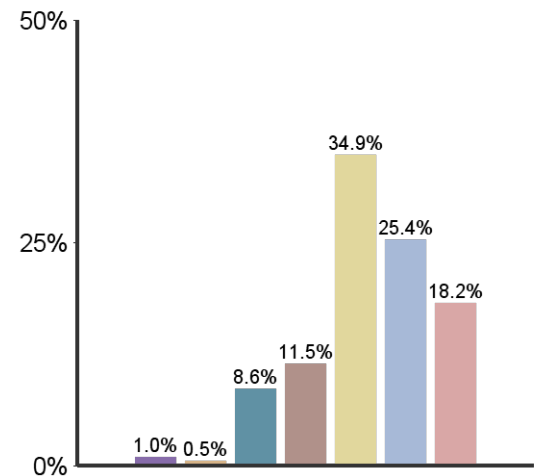
**Being critical, evaluative, and analytical**



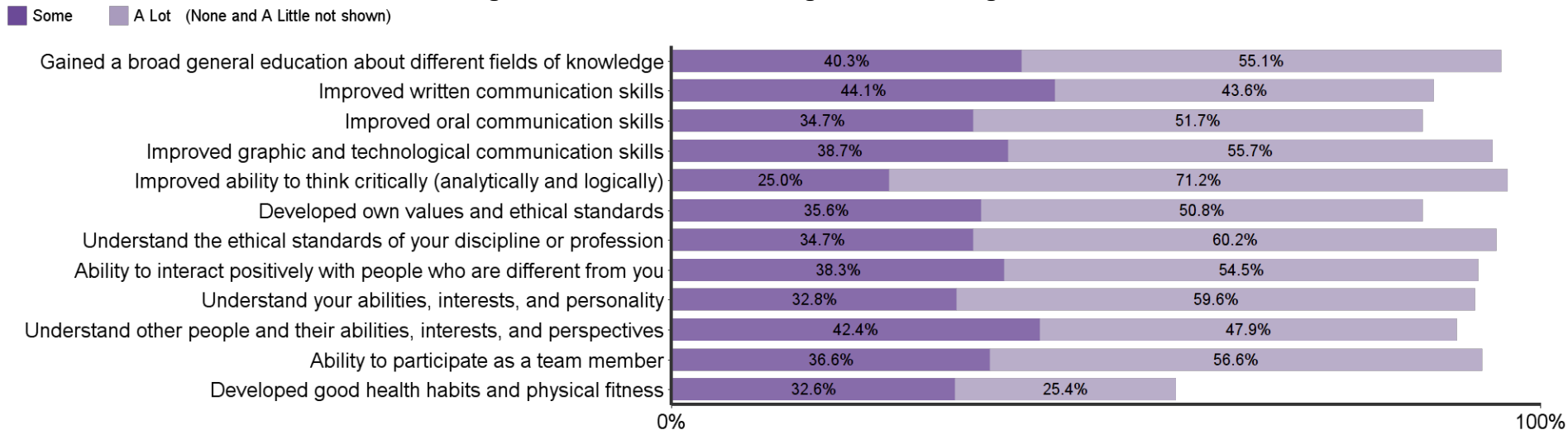
**Aesthetic, expressive, & creative qualities**



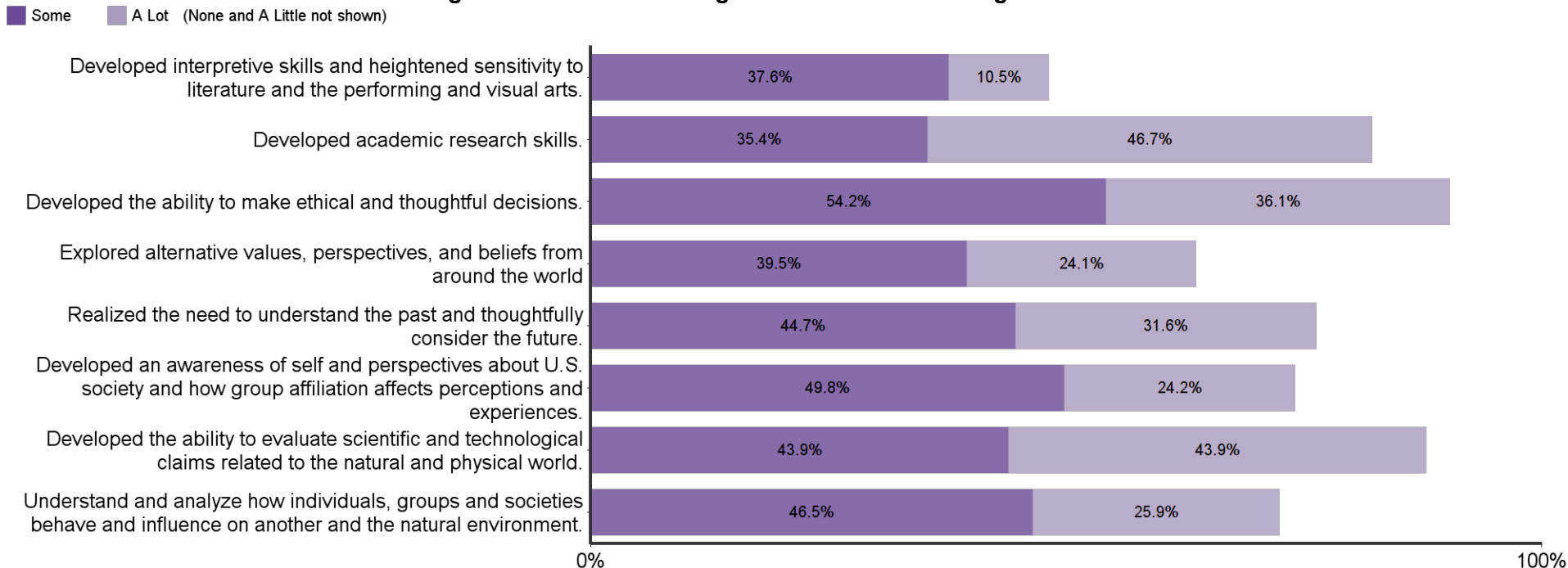
**Personal relevance & practical value**



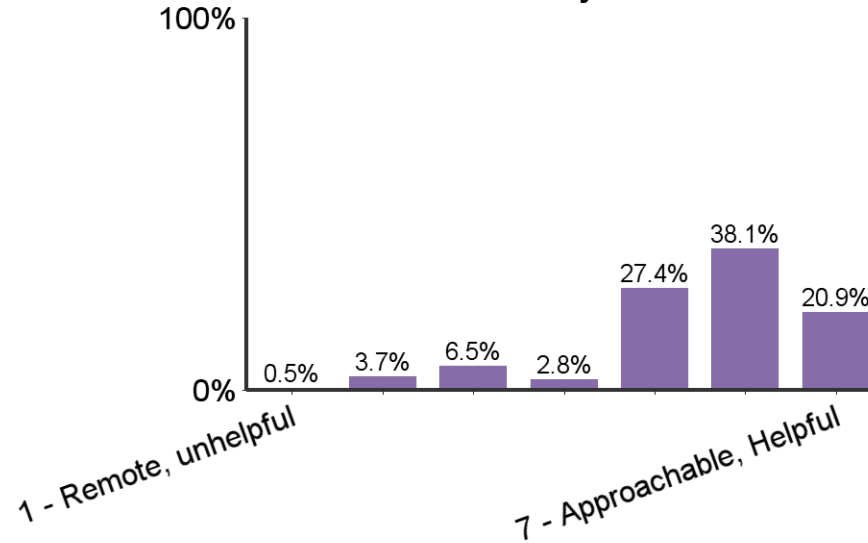
**Progress made in K-State undergraduate learning outcomes:**



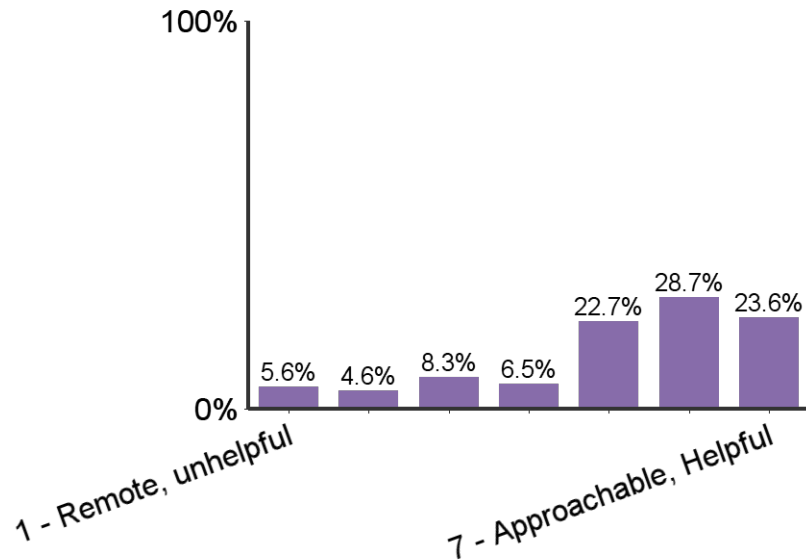
**Progress made in K-State 8 general education learning outcomes**



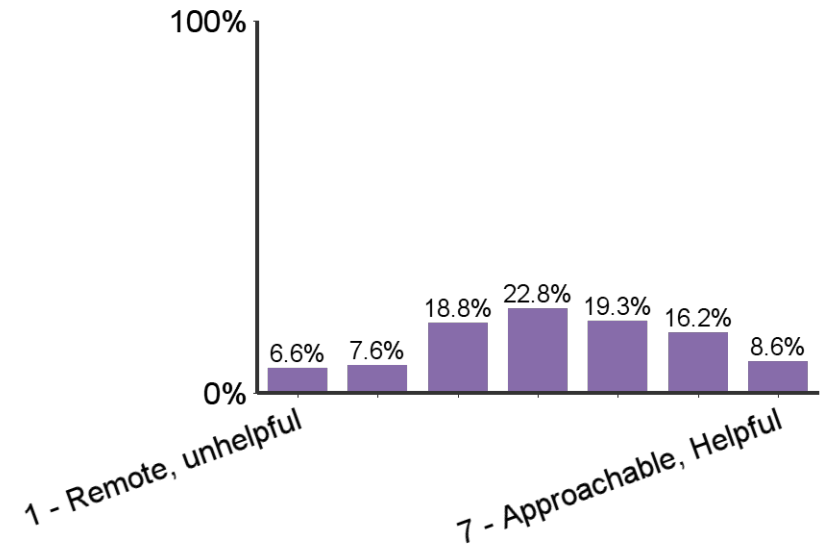
**Sense of relationships with faculty:**



**Sense of relationships with academic advisors:**

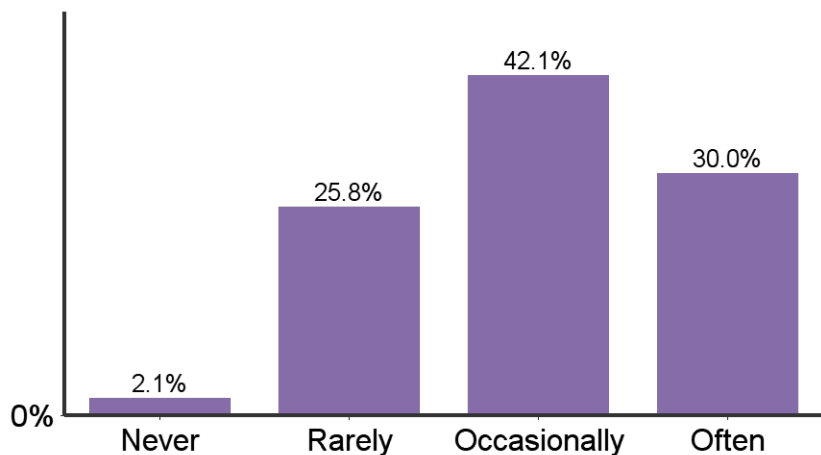


**Sense of relationships with GTAs:**

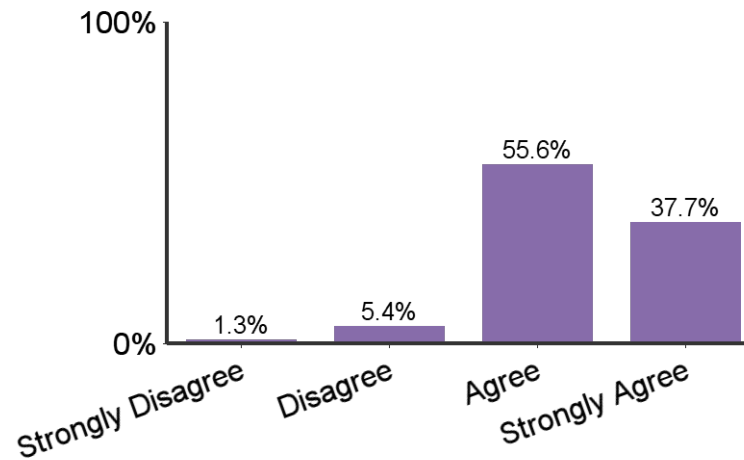




How often did you interact with faculty outside of class time?

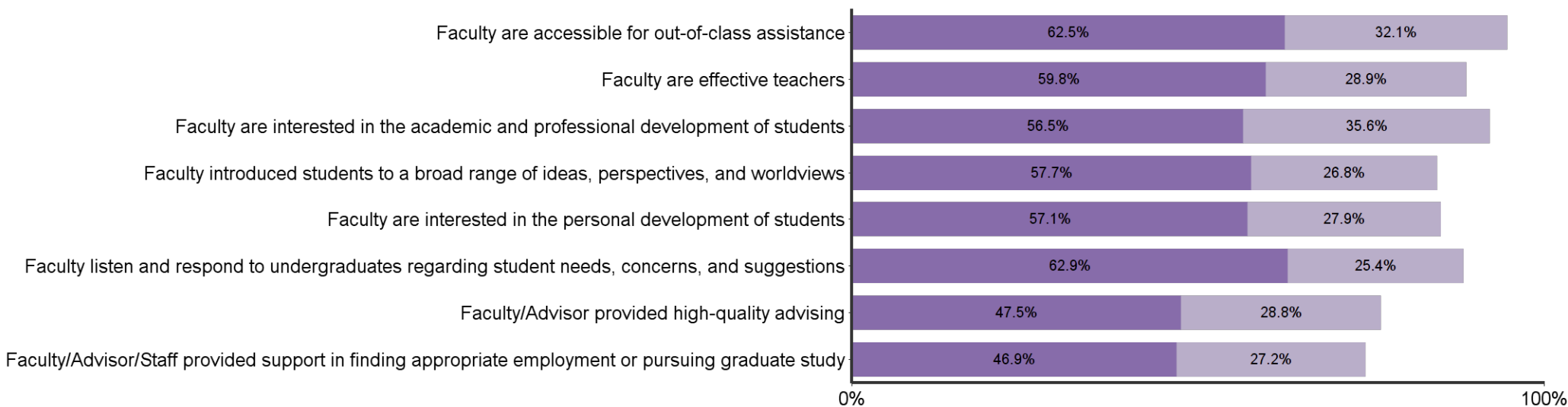


I found my major to be characterized by mutual respect between undergraduates and professors



In my major, faculty:

Agree Strongly Agree



**Responses by Major**

	Bar	Percent	Count
Mechanical Engineering		23.0%	58
Chemical Engineering		12.3%	31
Electrical Engineering		10.7%	27
Architectural Engineering		9.5%	24
Civil Engineering		9.5%	24
Construction Sci And Mgmt		9.1%	23
Industrial Engineering		7.5%	19
Biological Systems Engg		7.1%	18
Computer Science		6.0%	15
Computer Engineering		3.2%	8
Information Systems		2.0%	5
Total	-	100.0%	252

**Responses by Gender**



	Bar	Percent	Count
Female		19.4%	49
Male		80.6%	203

**Responses by Race/Ethnicity**

	Bar	Percent	Count
WHITE		80.2%	202
ASIAN		8.3%	21
HISPANIC		4.8%	12
NOTSPEC		3.6%	9
MULTIRAC		2.0%	5
BLACK		1.2%	3

**Responses by Semester**

	Bar	Percent	Count
Spring		57.9%	146
Fall		41.7%	105
Summer		0.4%	1

Responses by Citizenship Status			
	Bar	Percent	Count
Citizen		89.3%	225
Non-Citizen		10.7%	27

Credit Hours Transferred to K-State	
	Mean
Transfer Credit Hours	28.4

K-State Undergraduate GPA of Respondents	
	Mean
GPA	3.2

Age of Respondents	
	Mean
Age	23.4

Please rate your level of awareness and satisfaction with the following K-State Offices

	Did Not Know About	Knew About, But Did Not Use	Used and was Dissatisfied	Used and was Satisfied	Count
Office of Student Financial Assistance	5.8%	46.9%	8.5%	38.8%	224
Office of the Registrar	9.8%	36.6%	4.9%	48.7%	224
Office of Non-Traditional and Veteran Student Services	33.9%	55.8%	3.1%	7.1%	224
Office of Student Life	12.5%	66.1%	4.5%	17.0%	224
Office of Diversity	30.5%	62.3%	3.1%	4.0%	223
Office of Career and Employment Services	1.8%	24.2%	8.1%	65.9%	223
Office of Student Activities & Services (activities carnival, SafeRide, student legal services, etc.)	9.0%	54.1%	5.0%	32.0%	222
Office of Parking services	3.1%	22.9%	47.5%	26.5%	223
Counseling Services	8.1%	78.5%	3.1%	10.3%	223
Women's Center	34.1%	59.2%	2.7%	4.0%	223
Student Access Center	40.6%	47.8%	3.6%	8.0%	224
Academic and Career Information Center (assistance with exploring majors and matching your interests, abilities and values to possible occupations)	32.3%	43.5%	4.5%	19.7%	223
Academic Assistance Center (PILOTS, study skills, testing services, University Experience, etc.)	40.6%	46.0%	4.5%	8.9%	224
Educational Supportive Services (ESS) (TRiO, tutoring, writing and math assistance, etc.)	31.4%	43.9%	4.5%	20.2%	223
Powercat Financial Counseling	17.0%	67.4%	5.4%	10.3%	224

<b>Please rate your level of awareness and satisfaction with the following Library services</b>					
	Did Not Know About	Knew About, But Did Not Use	Used and was Dissatisfied	Used and was Satisfied	Count
Library facilities (atmosphere, available seating, hours)	0.9%	8.9%	8.5%	81.7%	224
Library staff (assistance in research, effectively finding information, learning how to use the libraries)	2.2%	21.9%	3.6%	72.3%	224
Library holdings (quality and quantity)	7.6%	28.7%	4.9%	58.7%	223
Access to electronic library resources (databases, electronic journals, and electronic books)	0.9%	10.3%	7.1%	81.7%	224

<b>Please rate your level of awareness and satisfaction with the following Student Life Services:</b>					
	Did Not Know About	Knew About, But Did Not Use	Used and was Dissatisfied	Used and was Satisfied	Count
Residence hall food service	5.0%	29.7%	7.7%	57.7%	222
Residence hall facilities	5.4%	31.2%	9.5%	53.8%	221
Residence hall services and programs	7.2%	40.3%	6.3%	46.2%	221
Lafene Health Center	0.5%	24.3%	15.8%	59.5%	222
K-State Student Union food service	0.5%	11.9%	13.2%	74.4%	219
Union Program Council (UPC)	7.7%	33.9%	5.0%	53.4%	221
Greek experience (fraternity/sorority)	5.9%	64.9%	6.3%	23.0%	222
Recreation Services	1.8%	10.9%	3.6%	83.7%	221
University Life Cafe	48.9%	42.5%	2.7%	5.9%	221
Center for Child Development	33.5%	61.5%	1.8%	3.2%	221
Multicultural Student Organizations	23.1%	66.1%	2.3%	8.6%	221
Alcohol and other drug educational services	17.1%	54.1%	14.4%	14.4%	222
Healthy Decisions (assists students with identifying sources of support)	45.5%	46.4%	2.3%	5.9%	220

<b>Please rate your level of awareness and satisfaction with the following Student Academic Services:</b>					
	Did Not Know About	Knew About, But Did Not Use	Used and was Dissatisfied	Used and was Satisfied	Count
Recruitment materials and manner in which information was made available to you	20.9%	26.4%	4.5%	48.2%	220
Admissions services and online application	7.3%	16.8%	6.8%	69.1%	220
kSIS and its many applications	0.9%	1.8%	15.8%	81.4%	221
DARS (Degree Audit Registration System)	0.0%	1.8%	9.1%	89.0%	219
Scholarship House (Clovia, Smith, Smurthwaite)	18.2%	70.5%	3.2%	8.2%	220
Developing Scholars Program	50.5%	40.4%	4.6%	4.6%	218
McNair Scholars Program	55.3%	37.9%	3.7%	3.2%	219
Convocations/Lectures (e.g. Landon, Lou Douglas, Dorothy Thompson, departmental, etc.)	31.5%	41.1%	3.7%	23.7%	219
SALT ( <a href="http://www.saltmoney.org/k-state">www.saltmoney.org/k-state</a> ) - A free online financial tool provided by Powercat Financial Counseling.	22.3%	61.4%	6.8%	9.5%	220

<b>Please rate your level of awareness and satisfaction with the following additional service/areas:</b>					
	Did Not Know About	Knew About, But Did Not Use	Used and was Dissatisfied	Used and was Satisfied	Count
Parking availability	1.4%	13.5%	70.7%	14.4%	222
Parking facilities (maintenance, appearance, etc.)	0.5%	17.2%	38.9%	43.4%	221
Campus bookstore	0.5%	7.7%	35.3%	56.6%	221
Campus safety	1.8%	25.5%	6.4%	66.4%	220
McCain Performance Series	4.1%	37.3%	3.6%	55.0%	220
Collegian (campus newspaper)	2.7%	30.0%	13.2%	54.1%	220
Royal Purple Yearbook	6.4%	78.6%	5.0%	10.0%	220

**In your K-State experience, how often have you had discussions with people from the following groups?**

	Never	Sometimes	Often	Very Often	Count	Average Value
People with political opinions of than your own	7.6%	41.9%	34.3%	16.1%	236	2.6
People with religious beliefs other than your own	8.5%	41.9%	36.9%	12.7%	236	2.5
People from economic situations other than your own	5.1%	29.7%	43.6%	21.6%	236	2.8
People of races or ethnicities other than your own	4.7%	33.1%	41.9%	20.3%	236	2.8

**How often did your K-State courses include diverse perspectives (political views, religious beliefs, racial/ethnic backgrounds, gender identities, etc.) in activities, assignments, and discussions?**

	Percent	Count
Never	25.1%	59
Sometimes	61.7%	145
Often	10.6%	25
Very Often	2.6%	6

<b>What were your reasons for choosing the major? (Select all that apply)</b>		
	Count	Percent
Interesting subject	185	75.8%
Job Demand	143	58.6%
Meaningful contribution to society	112	45.9%
Influence of family	65	26.6%
Influence of friends	23	9.4%
Influence of professor	23	9.4%
Respected positions	82	33.6%
High salaries	133	54.5%
Challenge	142	58.2%
Enjoyed courses in the field	126	51.6%
Friends in major	19	7.8%

<b>What percentage of your courses at K-State did you complete through distance education (i.e. online, video conferencing, etc.)?</b>		
	Count	Percent
I did not complete any courses through distance education; all of my courses were completed on-campus	118	48.0%
25% or less	123	50.0%
26%-50%	2	0.8%
51%-75%		
76%-99%	2	0.8%
All of my courses were completed through distance education	1	0.4%
<b>Total</b>	<b>246</b>	<b>100.0%</b>

<b>During your time at K-State, how many of your courses included a service-learning component (such as a community or volunteer project)?</b>		
	Count	Percent
None	139	56.5%
Some	107	43.5%
Most		
All		
<b>Total</b>	<b>246</b>	<b>100.0%</b>

<b>During your years at Kansas State University, how many hours per week, on average, did you spend in the following activities?</b>					
	None	1-10	11-20	21-30	30+
Internship/Practicum	50.8%	16.8%	9.7%	1.7%	3.8%
On-campus employment	42.0%	24.8%	26.9%	3.8%	2.5%
Off-campus employment	58.6%	15.1%	14.2%	6.0%	6.0%
Volunteer (unpaid) activities	40.0%	47.2%	9.8%	1.3%	1.7%



<b>What is your general attitude toward Kansas State University?</b>		
	Count	Percent
Very Negative	3	1.2%
Negative	11	4.5%
Positive	104	42.3%
Very Positive	128	52.0%
Total	246	100.0%

<b>When you applied to K-State, either as a new freshmen or transfer student, it was your:</b>		
	Count	Percent
First Choice	194	78.9%
Second Choice	38	15.4%
Third Choice	7	2.8%
Last Choice	7	2.8%
Total	246	100.0%

<b>Would you recommend Kansas State University to others?</b>		
	Count	Percent
Definitely No	4	1.6%
Probably No	6	2.4%
Probably Yes	83	33.7%
Definitely Yes	153	62.2%
Total	246	100.0%

<b>Students in my major are:</b>					
	Strongly Disagree	Disagree	Agree	Strongly Agree	Count
Career oriented	1.2%	0.8%	45.9%	52.1%	242
Serious about their studies	1.2%	4.9%	54.3%	39.5%	243
Supportive and helpful to each other in meeting the academic demands of the program	1.2%	3.3%	50.6%	44.9%	243
Academically honest (do not cheat, plagiarize)	2.5%	9.9%	57.9%	29.8%	242
Interested in a broad range of ideas from many disciplines	3.3%	18.1%	53.5%	25.1%	243
Able to work well in groups	2.1%	6.2%	59.7%	32.1%	243
Competitive with each other	1.6%	15.2%	53.5%	29.6%	243

<b>Students in my major are encouraged to:</b>					
	Strongly Disagree	Disagree	Agree	Strongly Agree	Count
Become personally acquainted with the department's faculty	2.1%	14.8%	53.9%	29.2%	243
Participate in professional interest groups	0.8%	16.0%	56.8%	26.3%	243
Attend professional seminars and colloquia	2.1%	16.9%	51.7%	29.3%	242
Become familiar with current and emerging technology	2.1%	11.9%	53.9%	32.1%	243
Participate in research or creative projects with faculty or other students	1.7%	14.0%	60.3%	24.0%	242

**I found the major to be:**

	Strongly Disagree	Disagree	Agree	Strongly Agree	Count
Characterized by mutual respect between undergraduate majors and professors	1.3%	5.4%	55.6%	37.7%	239
Academically stimulating	1.2%	1.2%	48.6%	49.0%	243

**In my major:**

	Strongly Disagree	Disagree	Agree	Strongly Agree	Count
Faculty are accessible for out-of-class assistance	0.4%	5.0%	62.5%	32.1%	240
Faculty are effective teachers	1.3%	10.0%	59.8%	28.9%	239
Faculty are interested in the academic and professional development of students	0.4%	7.5%	56.5%	35.6%	239
Faculty introduced students to a broad range of ideas, perspectives, and worldviews	0.8%	14.6%	57.7%	26.8%	239
Faculty are interested in the personal development of students	2.5%	12.5%	57.1%	27.9%	240
Faculty listen and respond to undergraduates regarding student needs, concerns, and suggestions	1.7%	10.0%	62.9%	25.4%	240
Faculty/Advisor provided high-quality advising	7.5%	16.3%	47.5%	28.7%	240
Faculty/Advisor/Staff provided support in finding appropriate employment or pursuing graduate study	7.9%	18.0%	46.9%	27.2%	239

<b>Sense of belonging: (Rated on a scale 1 to 7, 1 being a sense of alienation and 7 a sense of belonging)</b>		
	Count	Average Value
Relationships with other students, student groups, and activities	229	5.5

<b>Relationships with faculty and staff: (Rated on a scale of 1 to 7, 1 being unsympathetic, remote, unhelpful, and 7 approachable, understandable, helpful)</b>		
	Count	Average Value
Relationships with faculty members	215	5.5
Relationships with academic advisor(s)	216	5.2
Relationships with Graduate Teaching Assistants (GTAs)	197	4.2

<b>How often did you interact with faculty outside of class time?</b>		
	Count	Percent
Never	5	2.1%
Rarely	62	25.8%
Occasionally	101	42.1%
Often	72	30.0%
Total	240	100.0%

**Did you participate in an undergraduate research experience of creative endeavor?**

	Count	Percent
Yes	134	55.8%
No	106	44.2%
Total	240	100.0%

**How would you rate the contribution of your mentor research/creative experience?**

	Count	Percent of those who participated in research
Inadequate	12	9.0%
Fair	31	23.3%
Good	56	42.1%
Excellent	34	25.6%
Total	133	100.0%

**To what extent did your research/creative experience contribute to your academic success?**

	Count	Percent of those who participated in research
None	10	7.5%
Little	30	22.6%
Somewhat	50	37.6%
Very Much	43	32.3%
Total	133	100.0%

**Did your research/creative experience contribute to your career choice?**

	Count	Percent of those who participated in research
No	43	32.3%
Somewhat	54	40.6%
Definitely	36	27.1%
Total	133	100.0%

**How many semesters were you involved in a research/creative endeavor?**

	Count	Percent of those who participated in research
1-2	71	53.4%
3-4	29	21.8%
5-6	16	12.0%
7-8	12	9.0%
9 or more	5	3.8%
Total	133	100.0%

**What types of dissemination of your undergraduate research/creative endeavor did you successfully achieve? (select all that apply)**

	Count	Percent of those who participated in research
University research seminar presentation/poster	42	33.6%
Class presentation	68	54.4%
Poster at a conference outside of campus	20	16.0%
Oral presentation at a conference outside of campus	30	24.0%
Public performance/exhibition on campus	39	31.2%
Public performance/exhibition outside of campus	21	16.8%
Peer reviewed publication	22	17.6%
Other:	14	11.2%

As a result of your experience at Kansas State University, how much progress do you feel you have made in each of the following K-State 8 areas?						
	None	Little	Some	A Lot	Count	Average Value
Developed interpretive skills and heightened sensitivity to literature and the performing and visual arts.	13.5%	38.4%	39.2%	10.5%	229	2.4
Developed academic research skills.	2.6%	15.3%	56.9%	46.7%	229	3.3
Developed the ability to make ethical and thoughtful decisions.	2.6%	7.0%	37.3%	36.1%	227	3.2
Explored alternative values, perspectives, and beliefs from around the world	8.8%	27.6%	41.2%	24.1%	228	2.8
Realized the need to understand the past and thoughtfully consider the future.	4.4%	19.3%	42.9%	31.6%	228	3
Developed an awareness of self and perspectives about U.S. society and how group affiliation affects perceptions and experiences.	6.2%	19.8%	47.1%	24.2%	227	2.9
Developed the ability to evaluate scientific and technological claims related to the natural and physical world.	2.6%	9.6%	45.1%	43.9%	228	3.3
Understand and analyze how individuals, groups and societies behave and influence on another and the natural environment.	4.8%	22.8%	41.2%	25.9%	228	2.9

<b>As a result of your experience at Kansas State University, how much progress do you feel you have made in each of the following Undergraduate Learning Outcomes?</b>						
	None	Little	Some	A Lot	Count	Average Value
Gained a broad general education about different fields of knowledge	0.8%	3.8%	40.3%	55.1%	236	3.5
Improved written communication skills	2.1%	10.2%	44.1%	43.6%	236	3.3
Improved oral communication skills	2.5%	11.0%	34.7%	51.7%	236	3.4
Improved graphic and technological communication skills	1.3%	4.3%	38.7%	55.7%	235	3.5
Improved ability to think critically (analytically and logically)	1.3%	2.5%	25.0%	71.2%	236	3.7
Developed own values and ethical standards	3.0%	10.6%	35.6%	50.8%	236	3.3
Understand the ethical standards of your discipline or profession	1.7%	3.4%	34.7%	60.2%	236	3.5
Ability to interact positively with people who are different from you	1.3%	6.0%	38.3%	54.5%	235	3.5
Understand your abilities, interests, and personality	2.6%	5.1%	32.8%	59.6%	235	3.5
Understand other people and their abilities, interests, and perspectives	1.3%	8.5%	42.4%	47.9%	236	3.4
Ability to participate as a team member	2.1%	4.7%	36.6%	56.6%	235	3.5
Developed good health habits and physical fitness	16.1%	25.8%	32.6%	25.4%	236	2.7

Universities differ from one another in the extent to which they emphasize various aspects of student development. Think of your experience at Kansas State University. To what extent was each of the following emphasized? (Rated on a scale of 1 to 7, 1 being a weak emphasis and 7 strong emphasis)

	Count	Average Value
The development of academic, scholarly, and intellectual qualities	218	5.8
The development of aesthetic, expressive, and creative qualities	207	4.5
Being critical, evaluative, and analytical	215	5.9
The development of vocational and occupational competence	210	5.2
The personal relevance and practical value of your courses	209	5.3

**What are your plans after graduation?**

	Count	%
Have a job that will continue after graduation	15	6.7%
Have a job lined up to begin after graduation	143	63.8%
Will begin to look for a job	33	14.7%
Pursue additional undergraduate education	1	0.4%
Will attend graduate school	24	10.7%
Volunteer service (Peace Corps, AmeriCorps, etc.)		0.0%
No plans for a job at this time	2	0.9%
Military	1	0.4%
Starting or raising a family	1	0.4%
Other	4	1.8%