

*\*Responses for this report only include seniors within the College, except where noted.*

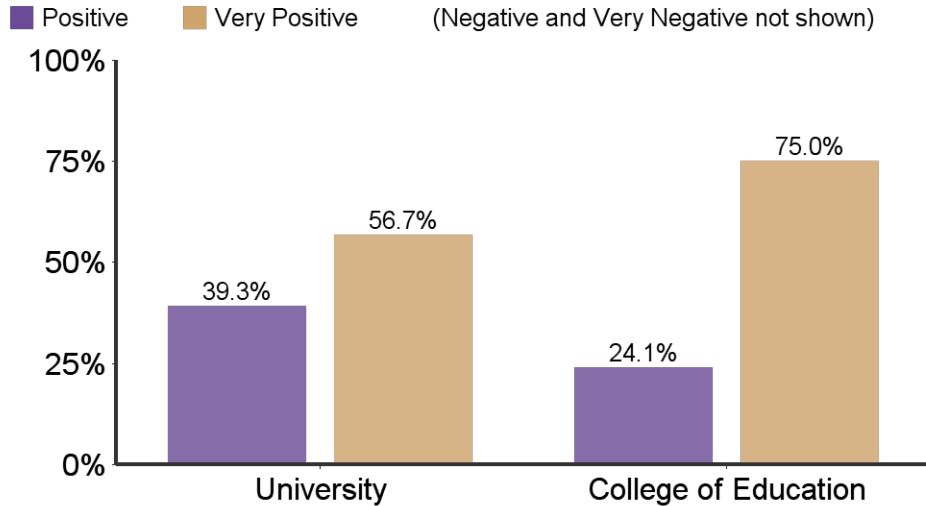
	Education	University
Responses	151	1718
Initial Population	303	3672
Response Rate	49.8%	46.8%

**Survey Information:**

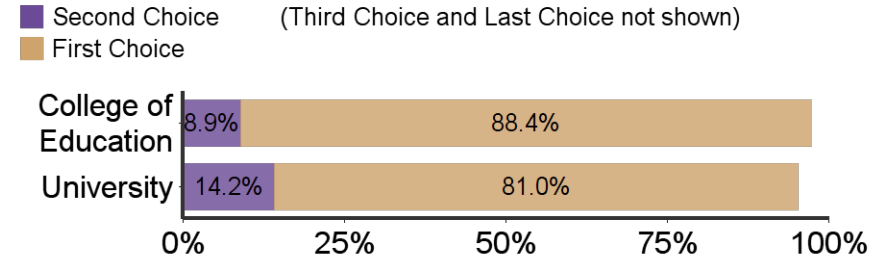
- The Senior Survey is designed to give undergraduate students the opportunity to reflect upon their K-State experiences. This information is used to improve the college experience for future students by identifying strengths in our programs as well as areas that need further development. The survey includes issues relating to satisfaction with K-State regarding academic programs, intellectual and personal growth, student services, and preparation for a career or a graduate/professional school.
- The survey is offered electronically (through Qualtrics) to seniors who have been cleared for graduation by their respective colleges

Table of Contents	
Introduction	1
Section I: Overall Satisfaction	2
Section IIa: 2025--Research, Scholarly, Creative Active Discovery	3
Section IIb: 2025--Undergraduate Educational Experience	5
Section IIc--Faculty and Staff	8
Section III: Demographics	10
Section IV: K-State Office and Services	12
Section V: Results Tables	15

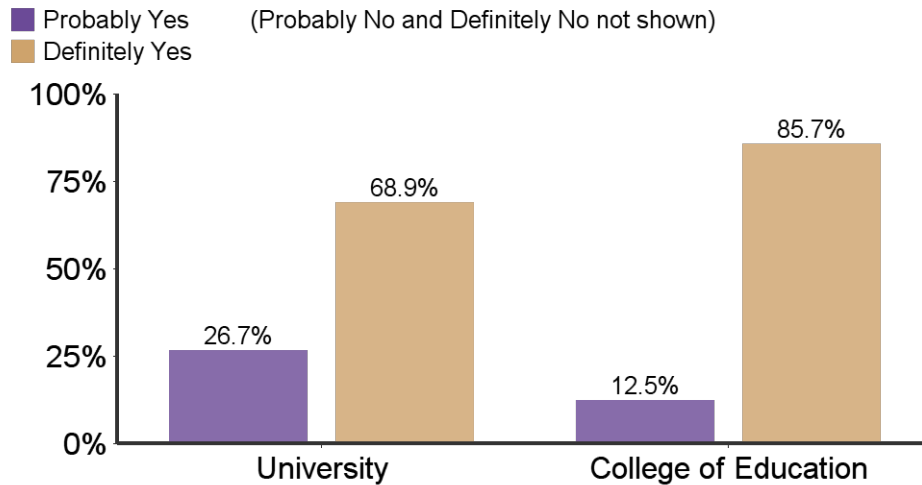
**What is your general attitude toward K-State?**



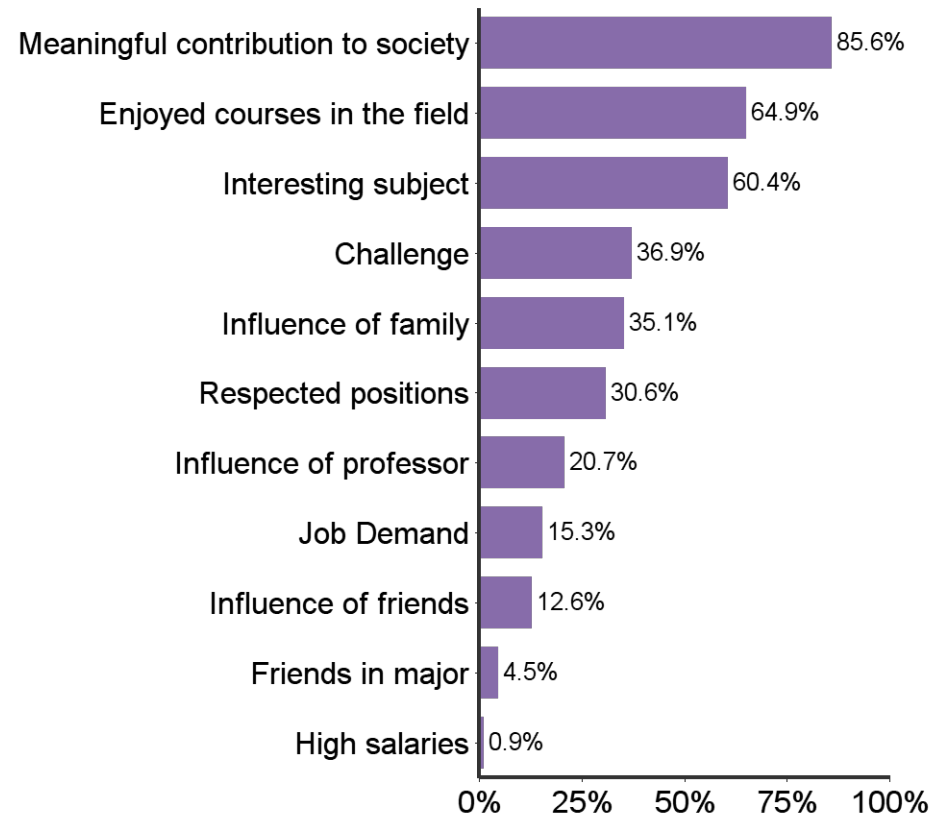
**When you applied to K-State, it was your:**



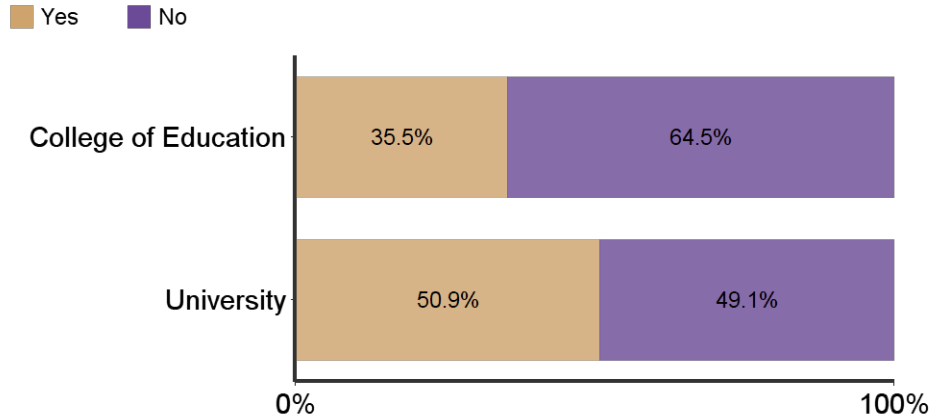
**Would you recommend K-State to others?**



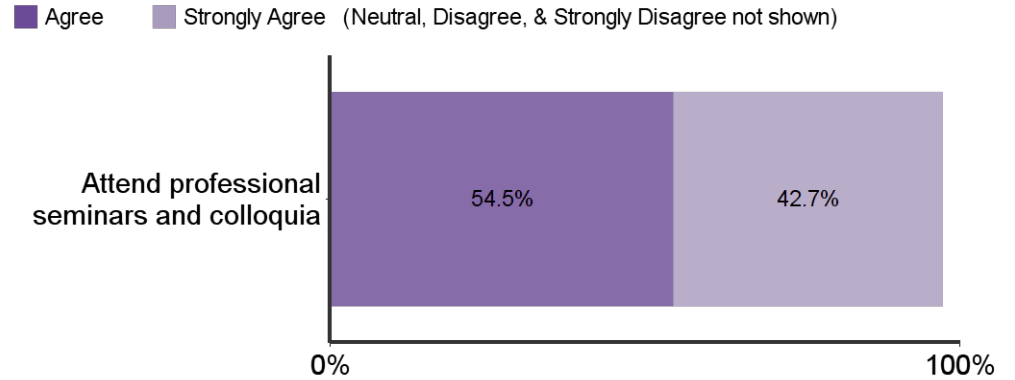
**Reasons for choosing major**



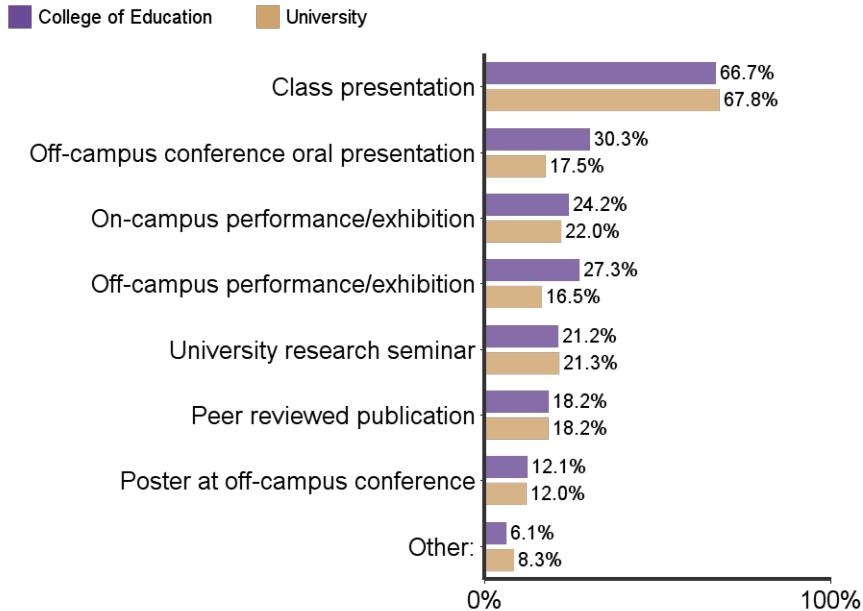
**Have you participated in undergraduate research?**



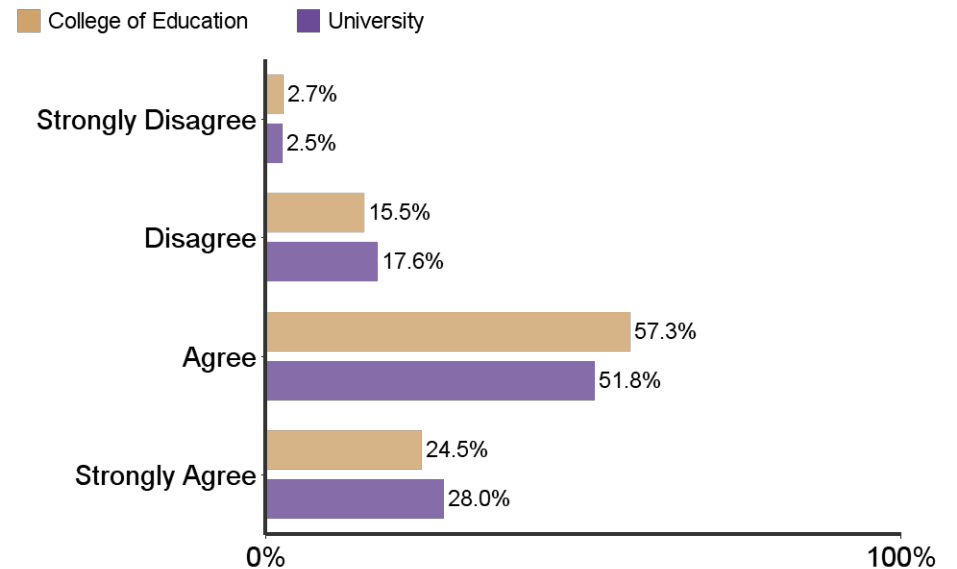
**Students in my major are encouraged to:**



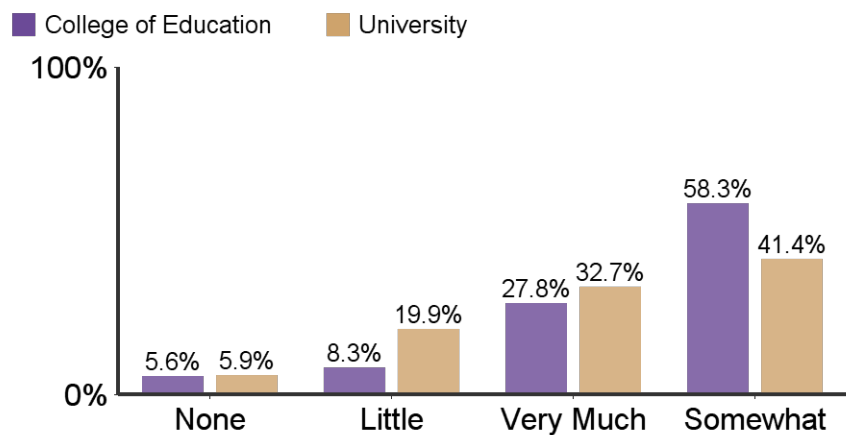
**What type(s) of research dissemination have you successfully achieved?**



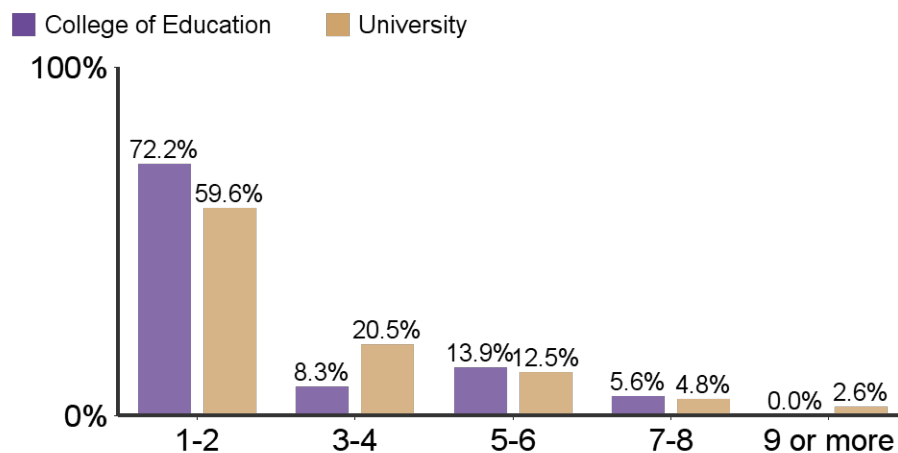
**Students in my major are encouraged to participate in research/creative projects:**



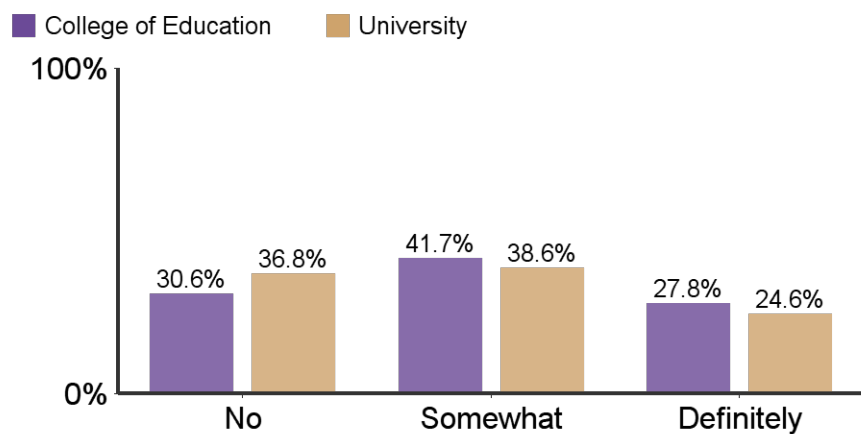
**To what extent did your research experience contribute to your academic success?**



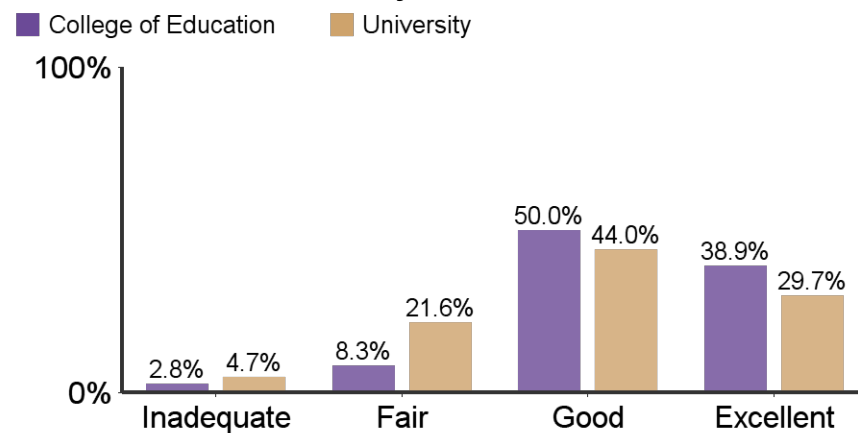
**Number of semesters involved in a research or creative endeavor:**

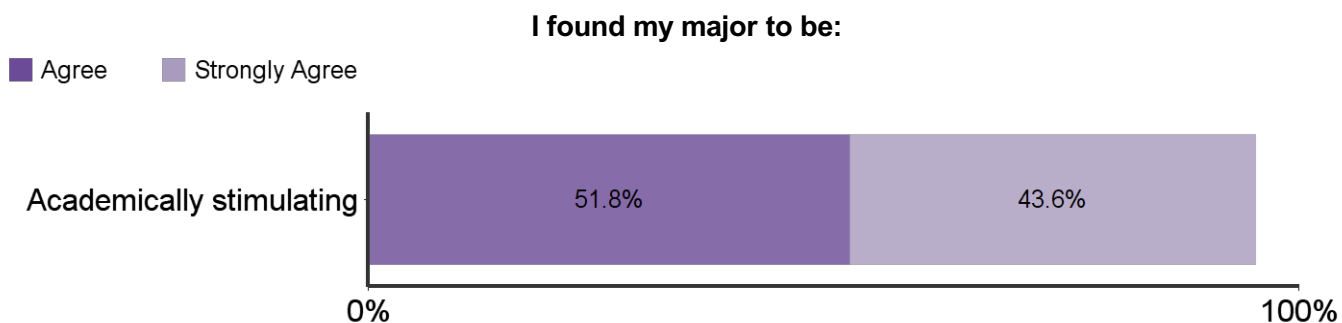
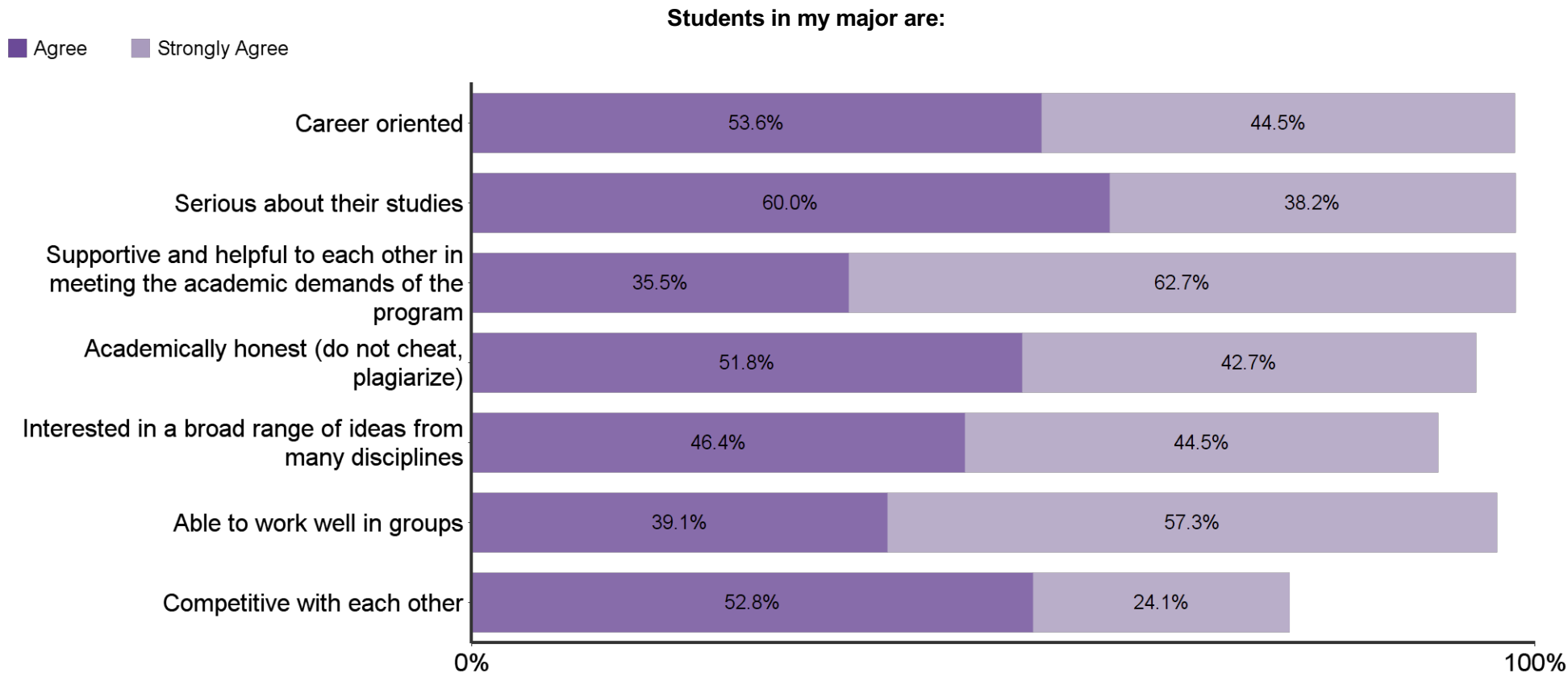


**Did your research experience contribute to your career choice?**



**How would you rate the contribution of your mentor to your research?**

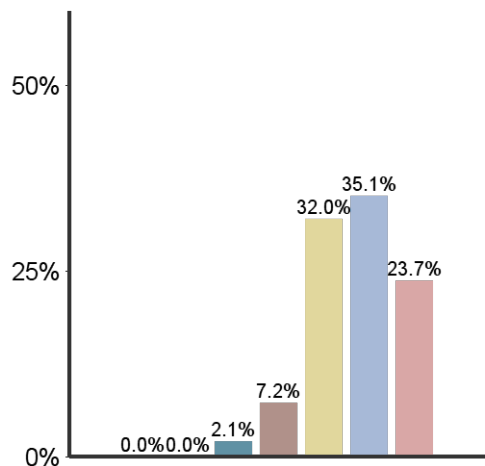




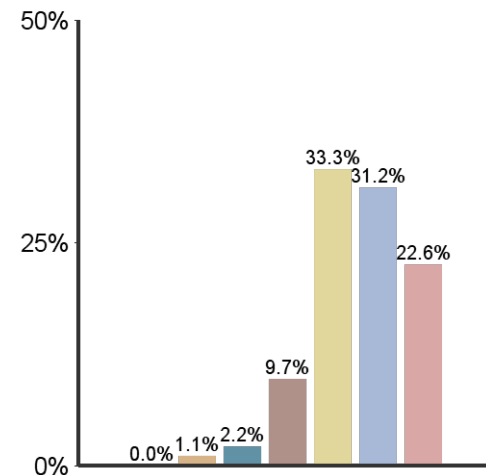
**Emphasis K-State placed on the following:**



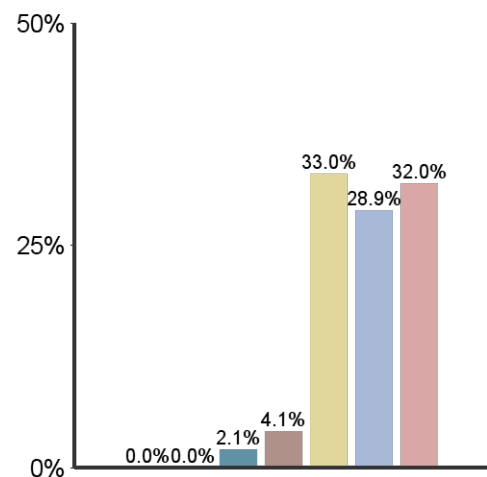
**Academic & Scholarly Qualities**



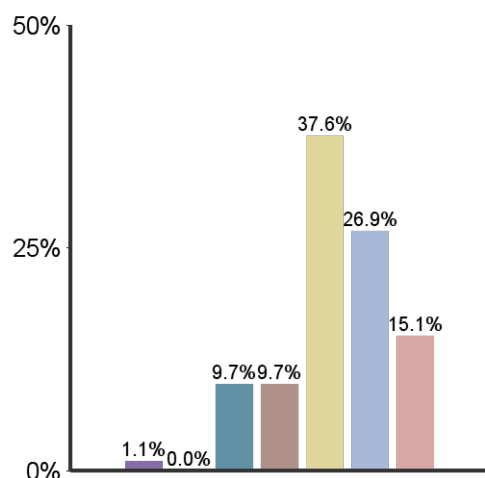
**Vocational and occupational competence**



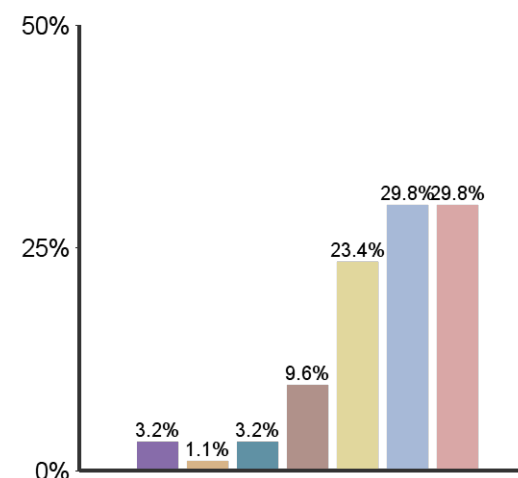
**Being critical, evaluative, and analytical**



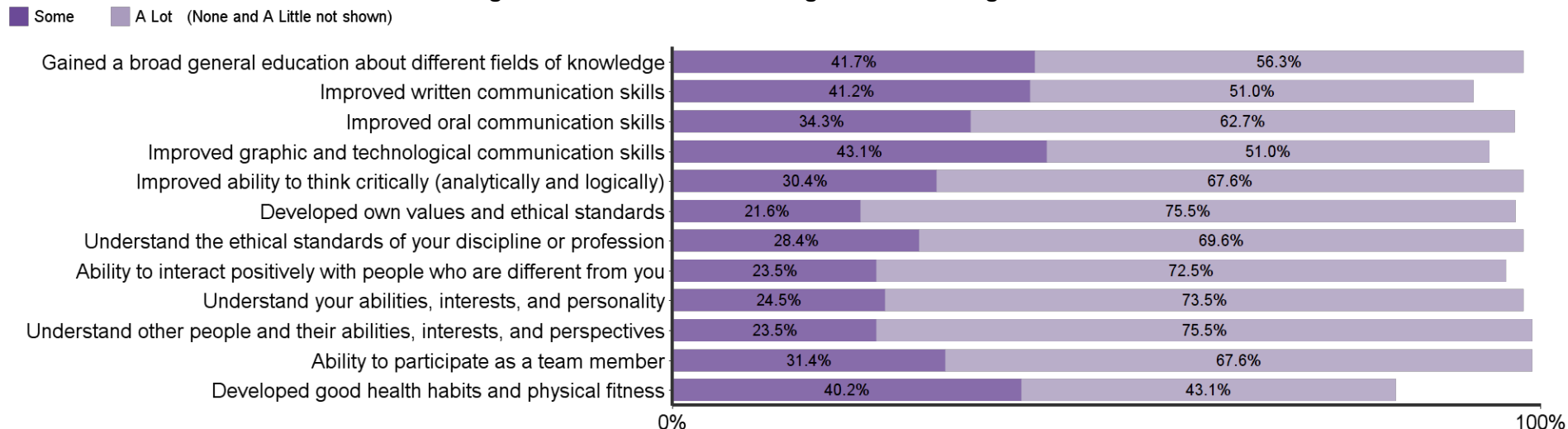
**Aesthetic, expressive, & creative qualities**



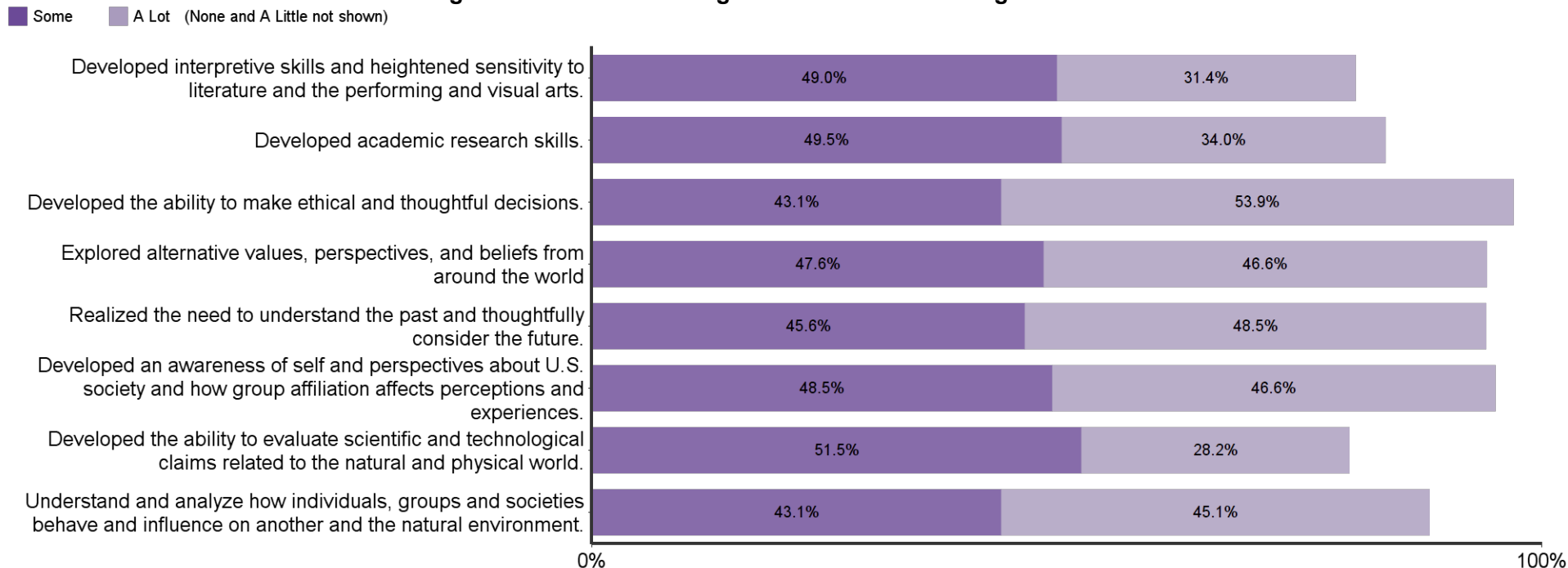
**Personal relevance & practical value**



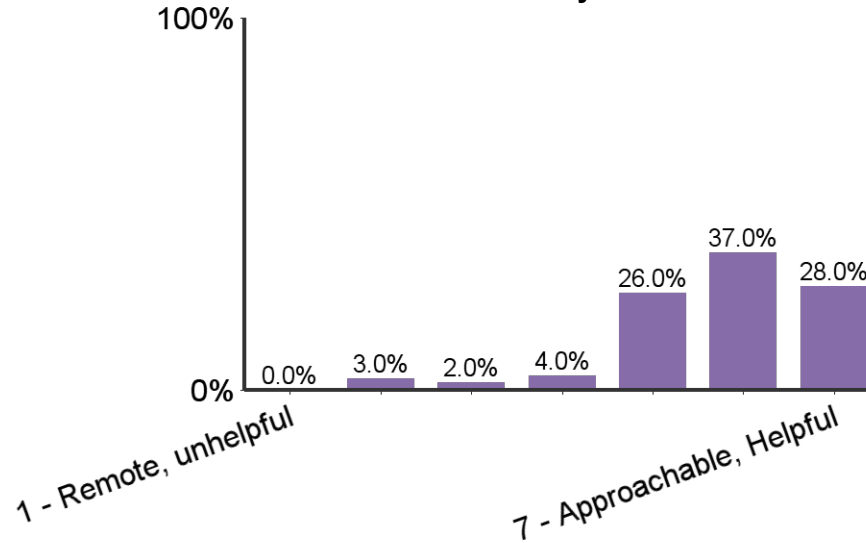
**Progress made in K-State undergraduate learning outcomes:**



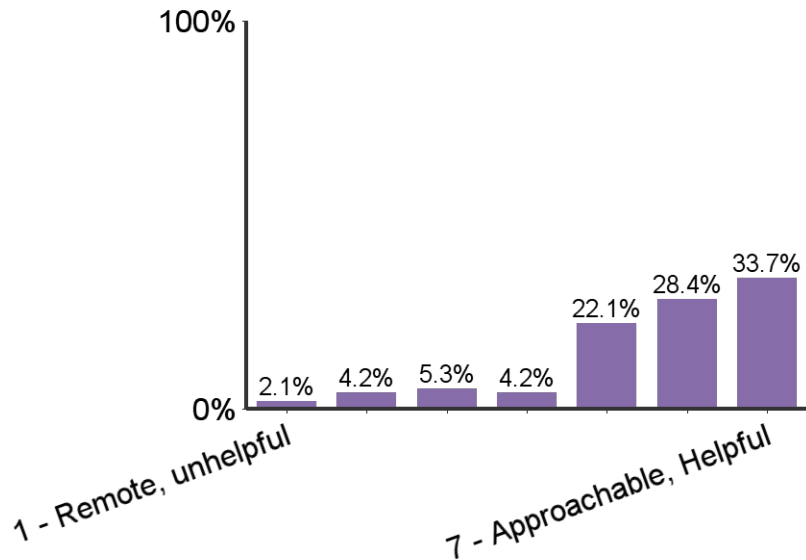
**Progress made in K-State 8 general education learning outcomes**



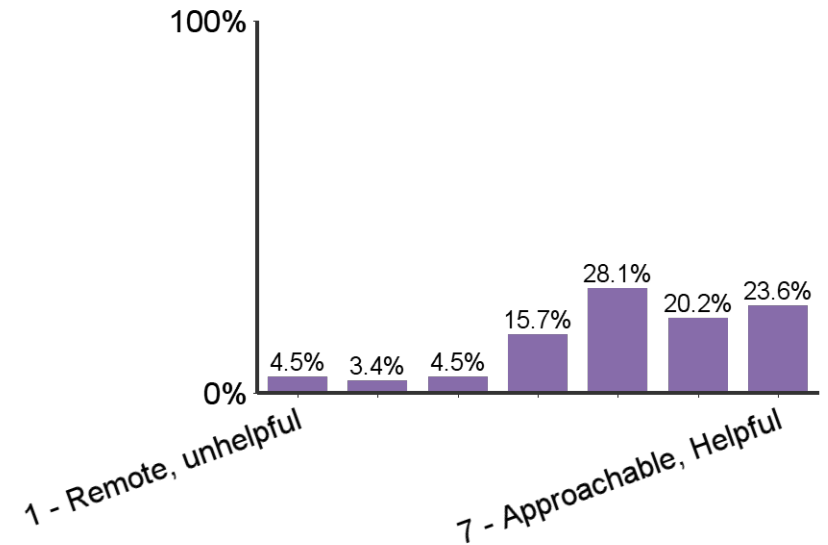
**Sense of relationships with faculty:**



**Sense of relationships with academic advisors:**

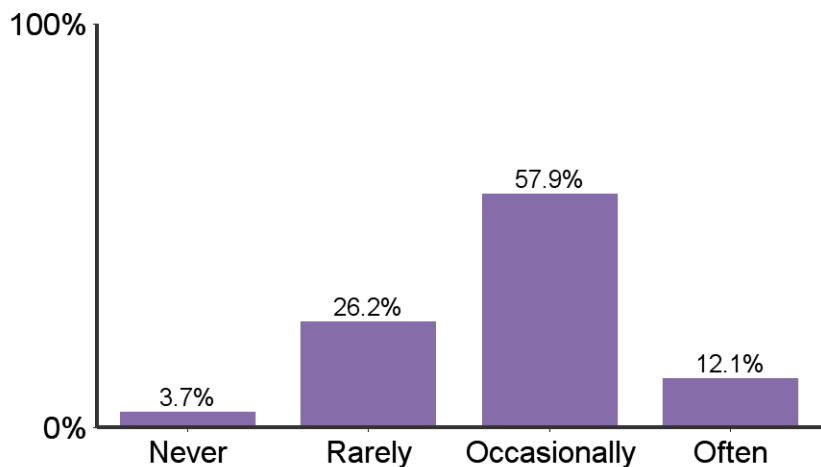


**Sense of relationships with GTAs:**

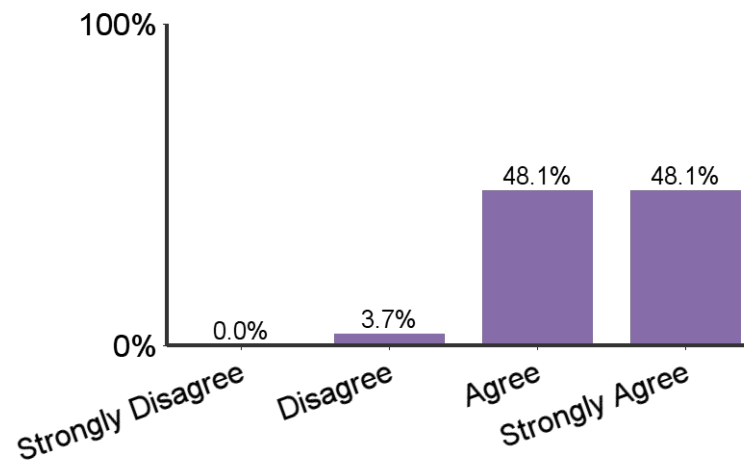




How often did you interact with faculty outside of class time?

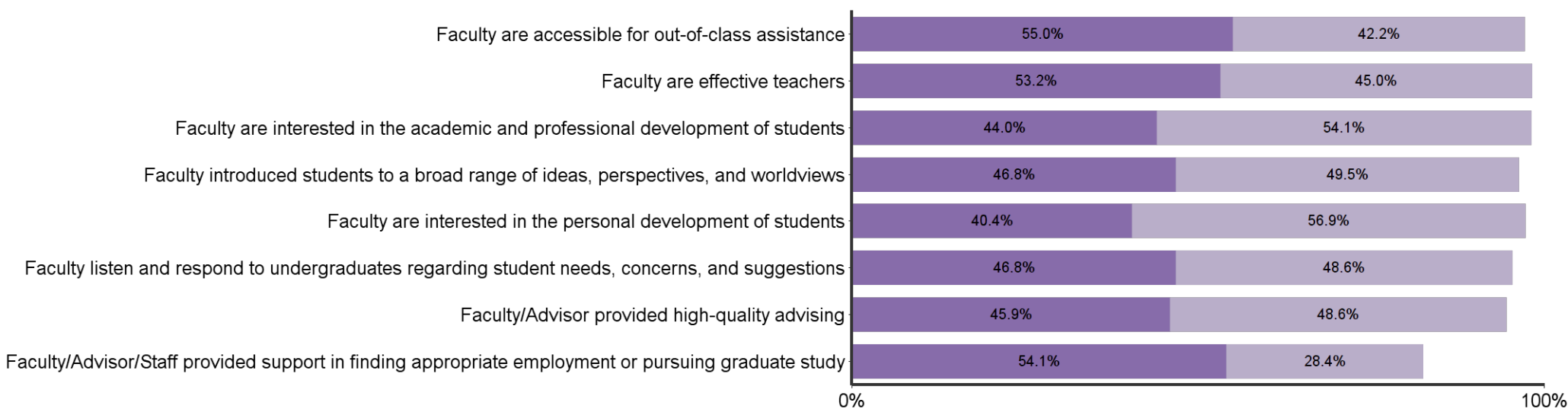


I found my major to be characterized by mutual respect between undergraduates and professors



In my major, faculty:

Agree Strongly Agree



**Responses by Major**

	Bar	Percent	Count
Elementary Education		48.3%	73
Teaching Cert		15.9%	24
Education - Social Studies		9.9%	15
Education English		7.3%	11
Education - Math		6.0%	9
Education - Business		4.0%	6
Education - Biological Sciences		2.6%	4
Education - Modern Languages		2.0%	3
Education - Chemistry		1.3%	2
Education		1.3%	2
Education - Speech		0.7%	1
Education - Earth Science		0.7%	1
Total	-	100.0%	151

**Responses by Gender**



	Bar	Percent	Count
Female		76.8%	116
Male		23.2%	35

**Responses by Race/Ethnicity**

	Bar	Percent	Count
WHITE		86.1%	130
HISPANIC		7.3%	11
NOTSPEC		3.3%	5
MULTIRAC		1.3%	2
ASIAN		1.3%	2
BLACK		0.7%	1

**Responses by Semester**

	Bar	Percent	Count
Spring		58.3%	88
Fall		39.7%	60
Summer		2.0%	3

Responses by Citizenship Status			
	Bar	Percent	Count
Citizen		98.7%	149
Non-Citizen		1.3%	2

Credit Hours Transferred to K-State	
	Mean
Transfer Credit Hours	34.9

K-State Undergraduate GPA of Respondents	
	Mean
GPA	3.5

Age of Respondents	
	Mean
Age	23.1

**Please rate your level of awareness and satisfaction with the following K-State Offices**

	Did Not Know About	Knew About, But Did Not Use	Used and was Dissatisfied	Used and was Satisfied	Count
Office of Student Financial Assistance	2.0%	33.0%	5.0%	60.0%	100
Office of the Registrar	3.0%	32.0%	4.0%	61.0%	100
Office of Non-Traditional and Veteran Student Services	31.3%	62.6%	0.0%	6.1%	99
Office of Student Life	6.0%	66.0%	0.0%	28.0%	100
Office of Diversity	28.3%	69.7%	0.0%	2.0%	99
Office of Career and Employment Services	0.0%	39.0%	3.0%	58.0%	100
Office of Student Activities & Services (activities carnival, SafeRide, student legal services, etc.)	8.1%	59.6%	0.0%	32.3%	99
Office of Parking services	3.0%	26.0%	39.0%	32.0%	100
Counseling Services	2.0%	78.0%	2.0%	18.0%	100
Women's Center	17.0%	69.0%	0.0%	14.0%	100
Student Access Center	19.0%	71.0%	1.0%	9.0%	100
Academic and Career Information Center (assistance with exploring majors and matching your interests, abilities and values to possible occupations)	14.0%	63.0%	1.0%	22.0%	100
Academic Assistance Center (PILOTS, study skills, testing services, University Experience, etc.)	16.0%	59.0%	2.0%	23.0%	100
Educational Supportive Services (ESS) (TRiO, tutoring, writing and math assistance, etc.)	15.0%	58.0%	2.0%	25.0%	100
Powercat Financial Counseling	12.1%	74.7%	0.0%	13.1%	99

Please rate your level of awareness and satisfaction with the following Library services					
	Did Not Know About	Knew About, But Did Not Use	Used and was Dissatisfied	Used and was Satisfied	Count
Library facilities (atmosphere, available seating, hours)	0.0%	2.0%	4.0%	94.0%	100
Library staff (assistance in research, effectively finding information, learning how to use the libraries)	0.0%	18.0%	3.0%	79.0%	100
Library holdings (quality and quantity)	6.0%	32.0%	1.0%	61.0%	100
Access to electronic library resources (databases, electronic journals, and electronic books)	1.0%	5.1%	3.0%	90.9%	99

Please rate your level of awareness and satisfaction with the following Student Life Services:					
	Did Not Know About	Knew About, But Did Not Use	Used and was Dissatisfied	Used and was Satisfied	Count
Residence hall food service	1.0%	24.5%	5.1%	69.4%	98
Residence hall facilities	1.0%	27.3%	4.0%	67.7%	99
Residence hall services and programs	2.0%	32.3%	4.0%	61.6%	99
Lafene Health Center	1.0%	8.1%	13.1%	77.8%	99
K-State Student Union food service	1.0%	13.4%	1.0%	84.5%	97
Union Program Council (UPC)	6.1%	39.4%	1.0%	53.5%	99
Greek experience (fraternity/sorority)	1.0%	67.7%	6.1%	25.3%	99
Recreation Services	0.0%	10.2%	1.0%	88.8%	98
University Life Cafe	33.7%	51.0%	1.0%	14.3%	98
Center for Child Development	8.2%	75.5%	0.0%	16.3%	98
Multicultural Student Organizations	10.1%	80.8%	0.0%	9.1%	99
Alcohol and other drug educational services	15.2%	65.7%	6.1%	13.1%	99
Healthy Decisions (assists students with identifying sources of support)	25.3%	68.7%	0.0%	6.1%	99

<b>Please rate your level of awareness and satisfaction with the following Student Academic Services:</b>					
	Did Not Know About	Knew About, But Did Not Use	Used and was Dissatisfied	Used and was Satisfied	Count
Recruitment materials and manner in which information was made available to you	15.2%	25.3%	2.0%	57.6%	99
Admissions services and online application	3.0%	15.2%	2.0%	79.8%	99
kSIS and its many applications	0.0%	4.1%	6.1%	89.8%	98
DARS (Degree Audit Registration System)	0.0%	7.3%	7.3%	85.4%	96
Scholarship House (Clovia, Smith, Smurthwaite)	9.1%	80.8%	0.0%	10.1%	99
Developing Scholars Program	41.8%	53.1%	0.0%	5.1%	98
McNair Scholars Program	46.9%	46.9%	0.0%	6.1%	98
Convocations/Lectures (e.g. Landon, Lou Douglas, Dorothy Thompson, departmental, etc.)	16.2%	54.5%	0.0%	29.3%	99
SALT ( <a href="http://www.saltmoney.org/k-state">www.saltmoney.org/k-state</a> ) - A free online financial tool provided by Powercat Financial Counseling.	21.2%	63.6%	0.0%	15.2%	99

<b>Please rate your level of awareness and satisfaction with the following additional service/areas:</b>					
	Did Not Know About	Knew About, But Did Not Use	Used and was Dissatisfied	Used and was Satisfied	Count
Parking availability	0.0%	12.0%	69.0%	19.0%	100
Parking facilities (maintenance, appearance, etc.)	0.0%	13.1%	33.3%	53.5%	99
Campus bookstore	0.0%	7.0%	10.0%	83.0%	100
Campus safety	1.0%	22.0%	4.0%	73.0%	100
McCain Performance Series	0.0%	26.0%	2.0%	72.0%	100
Collegian (campus newspaper)	0.0%	25.0%	5.0%	70.0%	100
Royal Purple Yearbook	3.0%	81.0%	1.0%	15.0%	100

**In your K-State experience, how often have you had discussions with people from the following groups?**

	Never	Sometimes	Often	Very Often	Count	Average Value
People with political opinions of than your own	2.9%	35.0%	41.7%	20.4%	103	2.8
People with religious beliefs other than your own	2.9%	39.8%	39.8%	17.5%	103	2.7
People from economic situations other than your own	1.0%	24.3%	49.5%	25.2%	103	3
People of races or ethnicities other than your own	0.0%	39.2%	35.3%	25.5%	102	2.9

**How often did your K-State courses include diverse perspectives (political views, religious beliefs, racial/ethnic backgrounds, gender identities, etc.) in activities, assignments, and discussions?**

	Percent	Count
Never	2.9%	1
Sometimes	35.0%	40
Often	41.7%	41
Very Often	20.4%	21

<b>What were your reasons for choosing the major? (Select all that apply)</b>		
	Count	Percent
Interesting subject	67	60.4%
Job Demand	17	15.3%
Meaningful contribution to society	95	85.6%
Influence of family	39	35.1%
Influence of friends	14	12.6%
Influence of professor	23	20.7%
Respected positions	34	30.6%
High salaries	1	0.9%
Challenge	41	36.9%
Enjoyed courses in the field	72	64.9%
Friends in major	5	4.5%

<b>What percentage of your courses at K-State did you complete through distance education (i.e. online, video conferencing, etc.)?</b>		
	Count	Percent
I did not complete any courses through distance education; all of my courses were completed on-campus	36	32.4%
25% or less	73	65.8%
26%-50%	2	1.8%
51%-75%		
76%-99%		
All of my courses were completed through distance education		
<b>Total</b>	<b>111</b>	<b>100.0%</b>

<b>During your time at K-State, how many of your courses included a service-learning component (such as a community or volunteer project)?</b>		
	Count	Percent
None	13	11.6%
Some	95	84.8%
Most	4	3.6%
All		
<b>Total</b>	<b>112</b>	<b>100.0%</b>

<b>During your years at Kansas State University, how many hours per week, on average, did you spend in the following activities?</b>					
	None	1-10	11-20	21-30	30+
Internship/Practicum	50.8%	29.7%	23.4%	10.8%	31.5%
On-campus employment	43.6%	12.7%	25.5%	14.5%	3.6%
Off-campus employment	30.0%	20.9%	23.6%	15.5%	10.0%
Volunteer (unpaid) activities	10.0%	65.5%	13.6%	5.5%	5.5%



<b>What is your general attitude toward Kansas State University?</b>		
	Count	Percent
Very Negative		
Negative	1	0.9%
Positive	27	24.1%
Very Positive	84	75.0%
Total	112	100.0%

<b>When you applied to K-State, either as a new freshmen or transfer student, it was your:</b>		
	Count	Percent
First Choice	99	88.4%
Second Choice	10	8.9%
Third Choice	2	1.8%
Last Choice	1	0.9%
Total	112	100.0%

<b>Would you recommend Kansas State University to others?</b>		
	Count	Percent
Definitely No		
Probably No	2	1.8%
Probably Yes	14	12.5%
Definitely Yes	96	85.7%
Total	112	100.0%

<b>Students in my major are:</b>					
	Strongly Disagree	Disagree	Agree	Strongly Agree	Count
Career oriented	0.0%	1.8%	53.6%	44.5%	110
Serious about their studies	0.0%	1.8%	60.0%	38.2%	110
Supportive and helpful to each other in meeting the academic demands of the program	0.0%	1.8%	35.5%	62.7%	110
Academically honest (do not cheat, plagiarize)	0.9%	4.5%	51.8%	42.7%	110
Interested in a broad range of ideas from many disciplines	0.9%	8.2%	46.4%	44.5%	110
Able to work well in groups	0.0%	3.6%	39.1%	57.3%	110
Competitive with each other	2.8%	20.4%	52.8%	24.1%	108

<b>Students in my major are encouraged to:</b>					
	Strongly Disagree	Disagree	Agree	Strongly Agree	Count
Become personally acquainted with the department's faculty	0.0%	7.3%	53.6%	39.1%	110
Participate in professional interest groups	0.0%	10.9%	60.0%	29.1%	110
Attend professional seminars and colloquia	0.0%	2.7%	54.5%	42.7%	110
Become familiar with current and emerging technology	0.0%	5.5%	39.4%	55.0%	109
Participate in research or creative projects with faculty or other students	2.7%	15.5%	57.3%	24.5%	110

**I found the major to be:**

	Strongly Disagree	Disagree	Agree	Strongly Agree	Count
Characterized by mutual respect between undergraduate majors and professors	0.0%	3.7%	48.1%	48.1%	108
Academically stimulating	0.0%	4.5%	51.8%	43.6%	110

**In my major:**

	Strongly Disagree	Disagree	Agree	Strongly Agree	Count
Faculty are accessible for out-of-class assistance	0.9%	1.8%	55.0%	42.2%	109
Faculty are effective teachers	0.9%	0.9%	53.2%	45.0%	109
Faculty are interested in the academic and professional development of students	0.9%	0.9%	44.0%	54.1%	109
Faculty introduced students to a broad range of ideas, perspectives, and worldviews	0.9%	2.8%	46.8%	49.5%	109
Faculty are interested in the personal development of students	0.9%	1.8%	40.4%	56.9%	109
Faculty listen and respond to undergraduates regarding student needs, concerns, and suggestions	2.8%	1.8%	46.8%	48.6%	109
Faculty/Advisor provided high-quality advising	0.9%	4.6%	45.9%	48.6%	109
Faculty/Advisor/Staff provided support in finding appropriate employment or pursuing graduate study	2.8%	14.7%	54.1%	28.4%	109

<b>Sense of belonging: (Rated on a scale 1 to 7, 1 being a sense of alienation and 7 a sense of belonging)</b>		
	Count	Average Value
Relationships with other students, student groups, and activities	107	5.9

<b>Relationships with faculty and staff: (Rated on a scale of 1 to 7, 1 being unsympathetic, remote, unhelpful, and 7 approachable, understandable, helpful)</b>		
	Count	Average Value
Relationships with faculty members	100	5.8
Relationships with academic advisor(s)	95	5.6
Relationships with Graduate Teaching Assistants (GTAs)	89	5.1

<b>How often did you interact with faculty outside of class time?</b>		
	Count	Percent
Never	4	3.7%
Rarely	28	26.2%
Occasionally	62	57.9%
Often	13	12.1%
Total	107	100.0%

<b>Did you participate in an undergraduate research experience of creative endeavor?</b>		
	Count	Percent
Yes	39	35.5%
No	71	64.5%
Total	110	100.0%

<b>How would you rate the contribution of your mentor research/creative experience?</b>		
	Count	Percent of those who participated in research
Inadequate	1	2.8%
Fair	3	8.3%
Good	18	50.0%
Excellent	14	38.9%
Total	36	100.0%

<b>To what extent did your research/creative experience contribute to your academic success?</b>		
	Count	Percent of those who participated in research
None	2	5.6%
Little	3	8.3%
Somewhat	21	58.3%
Very Much	10	27.8%
Total	36	100.0%

<b>Did your research/creative experience contribute to your career choice?</b>		
	Count	Percent of those who participated in research
No	11	30.6%
Somewhat	15	41.7%
Definitely	10	27.8%
Total	36	100.0%

<b>How many semesters were you involved in a research/creative endeavor?</b>		
	Count	Percent of those who participated in research
1-2	26	72.2%
3-4	3	8.3%
5-6	5	13.9%
7-8	2	5.6%
9 or more		0.0%
Total	36	100.0%

<b>What types of dissemination of your undergraduate research/creative endeavor did you successfully achieve? (select all that apply)</b>		
	Count	Percent of those who participated in research
University research seminar presentation/poster	7	21.2%
Class presentation	22	66.7%
Poster at a conference outside of campus	4	12.1%
Oral presentation at a conference outside of campus	10	30.3%
Public performance/exhibition on campus	8	24.2%
Public performance/exhibition outside of campus	9	27.3%
Peer reviewed publication	6	18.2%
Other:	2	6.1%

As a result of your experience at Kansas State University, how much progress do you feel you have made in each of the following K-State 8 areas?						
	None	Little	Some	A Lot	Count	Average Value
Developed interpretive skills and heightened sensitivity to literature and the performing and visual arts.	0.0%	19.6%	39.2%	31.4%	102	3.1
Developed academic research skills.	0.0%	16.5%	56.9%	34.0%	103	3.2
Developed the ability to make ethical and thoughtful decisions.	0.0%	2.9%	37.3%	53.9%	102	3.5
Explored alternative values, perspectives, and beliefs from around the world	0.0%	5.8%	41.2%	46.6%	103	3.4
Realized the need to understand the past and thoughtfully consider the future.	1.0%	4.9%	42.9%	48.5%	103	3.4
Developed an awareness of self and perspectives about U.S. society and how group affiliation affects perceptions and experiences.	0.0%	4.9%	47.1%	46.6%	103	3.4
Developed the ability to evaluate scientific and technological claims related to the natural and physical world.	1.9%	18.4%	45.1%	28.2%	103	3.1
Understand and analyze how individuals, groups and societies behave and influence on another and the natural environment.	0.0%	11.8%	41.2%	45.1%	102	3.3

As a result of your experience at Kansas State University, how much progress do you feel you have made in each of the following Undergraduate Learning Outcomes?						
	None	Little	Some	A Lot	Count	Average Value
Gained a broad general education about different fields of knowledge	1.0%	1.0%	41.7%	56.3%	103	3.5
Improved written communication skills	0.0%	7.8%	41.2%	51.0%	102	3.4
Improved oral communication skills	0.0%	2.9%	34.3%	62.7%	102	3.6
Improved graphic and technological communication skills	0.0%	5.9%	43.1%	51.0%	102	3.5
Improved ability to think critically (analytically and logically)	0.0%	2.0%	30.4%	67.6%	102	3.7
Developed own values and ethical standards	0.0%	2.9%	21.6%	75.5%	102	3.7
Understand the ethical standards of your discipline or profession	0.0%	2.0%	28.4%	69.6%	102	3.7
Ability to interact positively with people who are different from you	0.0%	3.9%	23.5%	72.5%	102	3.7
Understand your abilities, interests, and personality	0.0%	2.0%	24.5%	73.5%	102	3.7
Understand other people and their abilities, interests, and perspectives	0.0%	1.0%	23.5%	75.5%	102	3.7
Ability to participate as a team member	0.0%	1.0%	31.4%	67.6%	102	3.7
Developed good health habits and physical fitness	5.9%	10.8%	40.2%	43.1%	102	3.2

Universities differ from one another in the extent to which they emphasize various aspects of student development. Think of your experience at Kansas State University. To what extent was each of the following emphasized? (Rated on a scale of 1 to 7, 1 being a weak emphasis and 7 strong emphasis)

	Count	Average Value
The development of academic, scholarly, and intellectual qualities	97	5.7
The development of aesthetic, expressive, and creative qualities	93	5.2
Being critical, evaluative, and analytical	97	5.8
The development of vocational and occupational competence	93	5.6
The personal relevance and practical value of your courses	94	5.6

**What are your plans after graduation?**

	Count	%
Have a job that will continue after graduation	3	2.9%
Have a job lined up to begin after graduation	46	43.8%
Will begin to look for a job	43	41.0%
Pursue additional undergraduate education		0.0%
Will attend graduate school	10	9.5%
Volunteer service (Peace Corps, AmeriCorps, etc.)		0.0%
No plans for a job at this time	2	1.9%
Military		0.0%
Starting or raising a family		0.0%
Other	1	1.0%