

**Responses for this report only include seniors within the College, except where noted.*

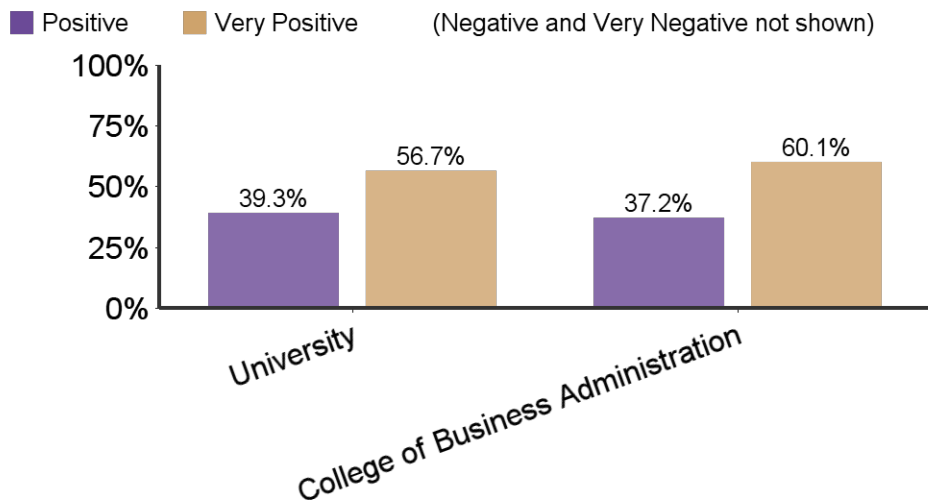
	Business Administration	University
Responses	259	1718
Initial Population	566	3672
Response Rate	45.8%	46.8%

Survey Information:

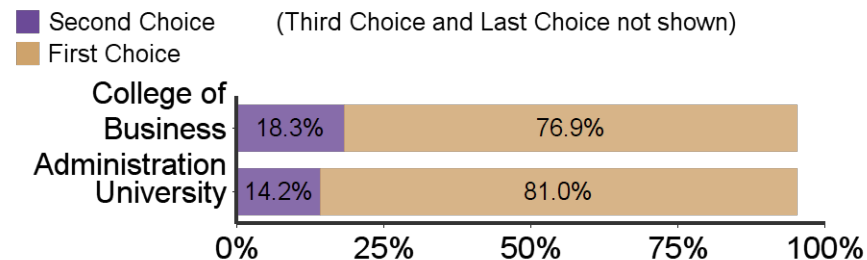
- The Senior Survey is designed to give undergraduate students the opportunity to reflect upon their K-State experiences. This information is used to improve the college experience for future students by identifying strengths in our programs as well as areas that need further development. The survey includes issues relating to satisfaction with K-State regarding academic programs, intellectual and personal growth, student services, and preparation for a career or a graduate/professional school.
- The survey is offered electronically (through Qualtrics) to seniors who have been cleared for graduation by their respective colleges

Table of Contents	
Introduction	1
Section I: Overall Satisfaction	2
Section IIa: 2025--Research, Scholarly, Creative Active Discovery	3
Section IIb: 2025--Undergraduate Educational Experience	5
Section IIc--Faculty and Staff	8
Section III: Demographics	10
Section IV: K-State Office and Services	12
Section V: Results Tables	15

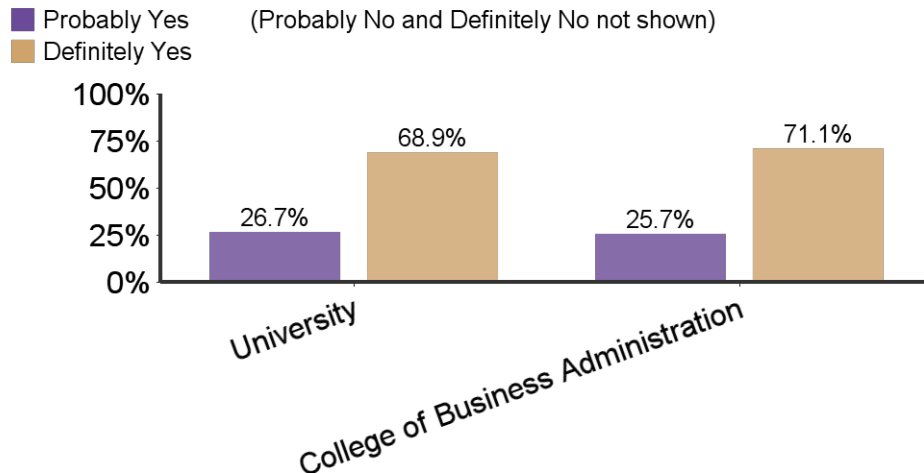
What is your general attitude toward K-State?



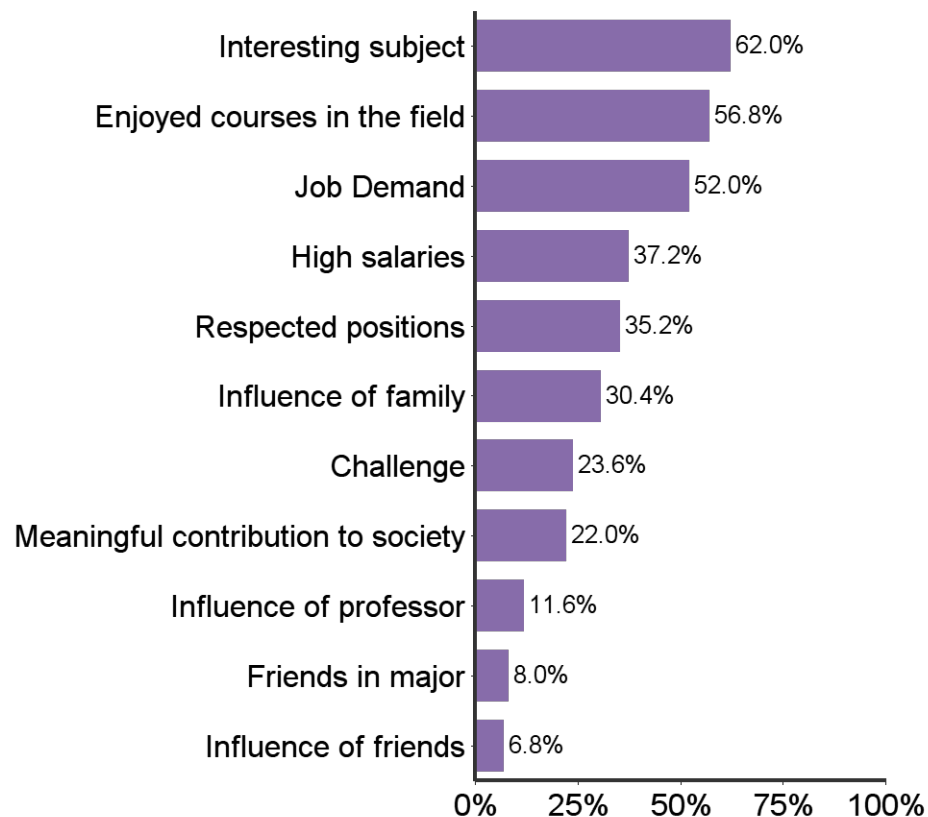
When you applied to K-State, it was your:



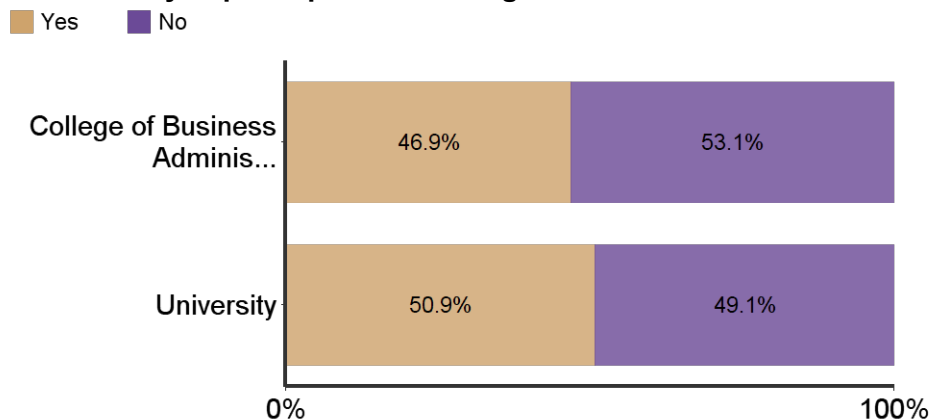
Would you recommend K-State to others?



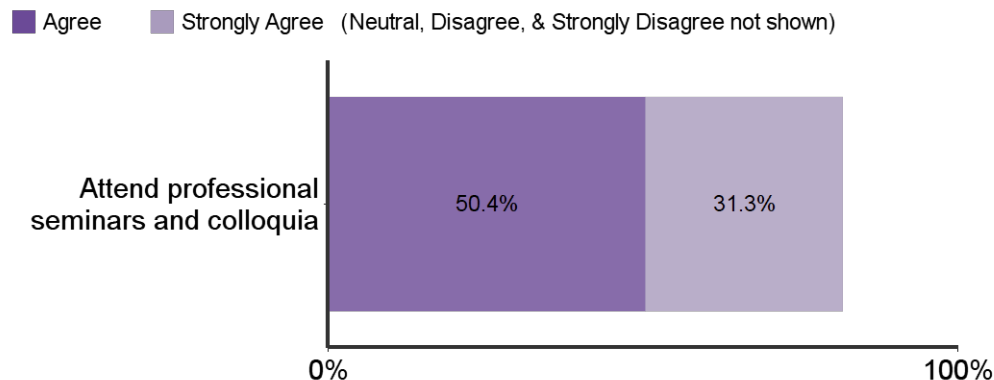
Reasons for choosing major



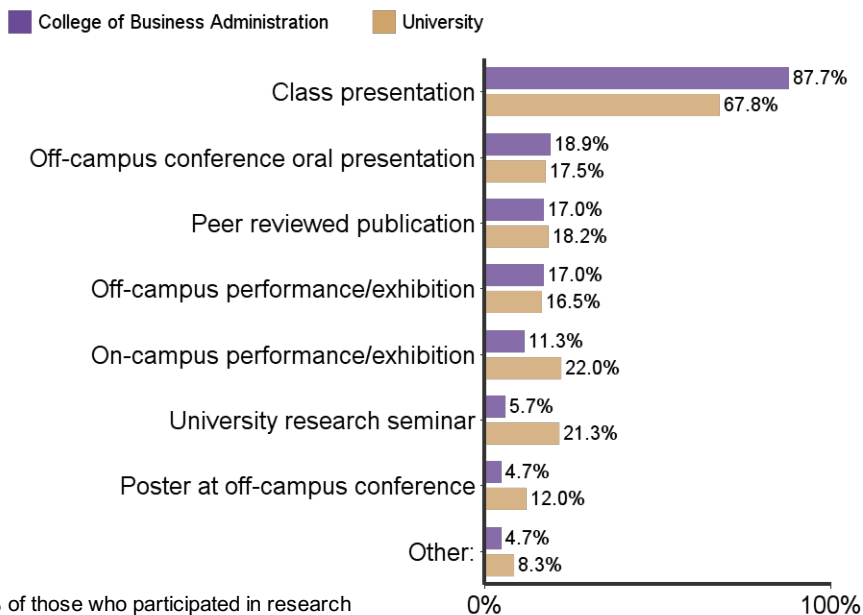
Have you participated in undergraduate research?



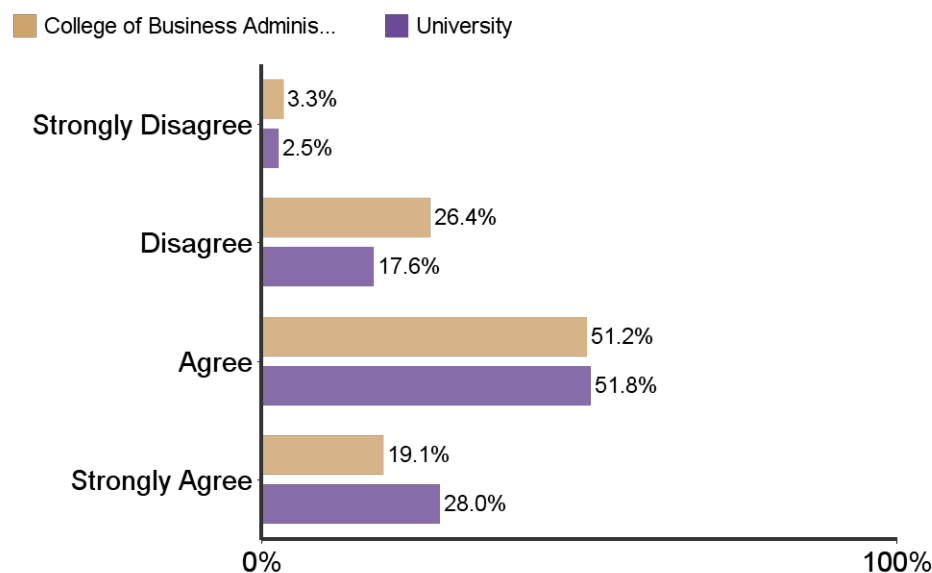
Students in my major are encouraged to:



What type(s) of research dissemination have you successfully achieved?

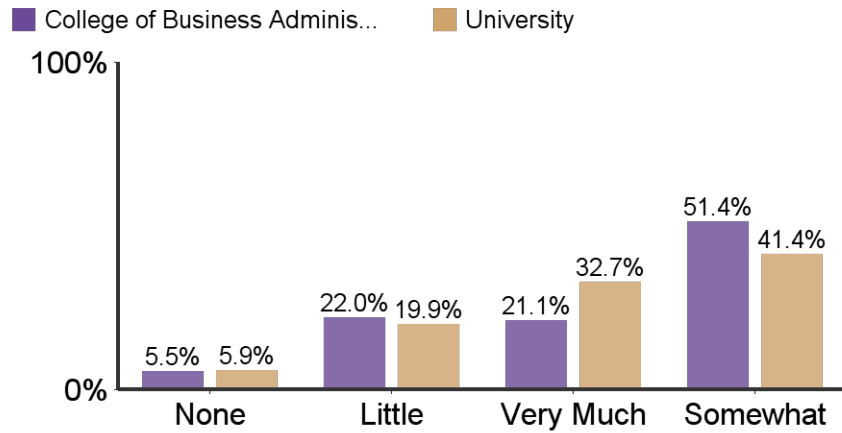


Students in my major are encouraged to participate in research/creative projects:

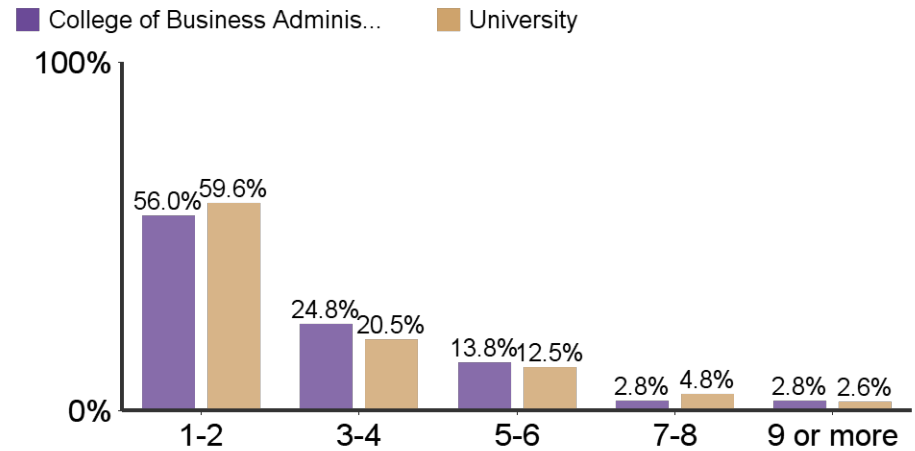


*All responses on the corresponding page include only responses from those who participated in research.

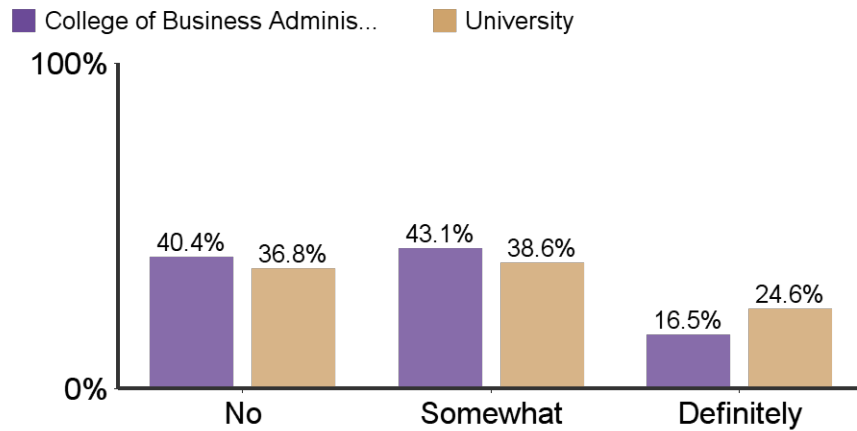
To what extent did your research experience contribute to your academic success?



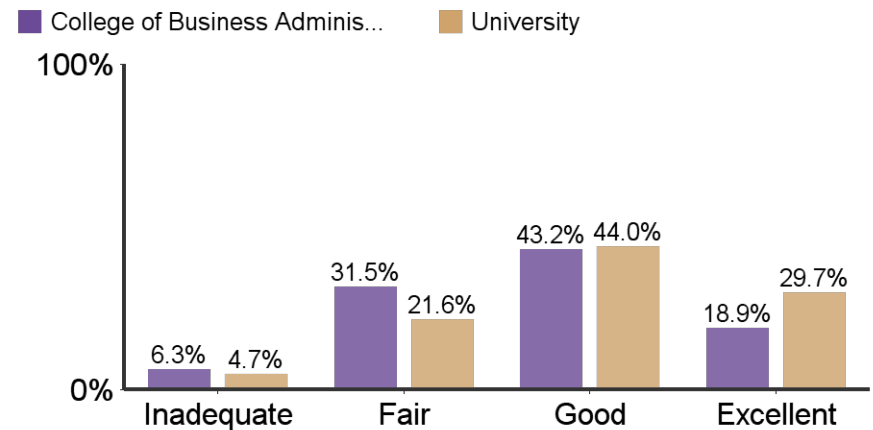
Number of semesters involved in a research or creative endeavor:



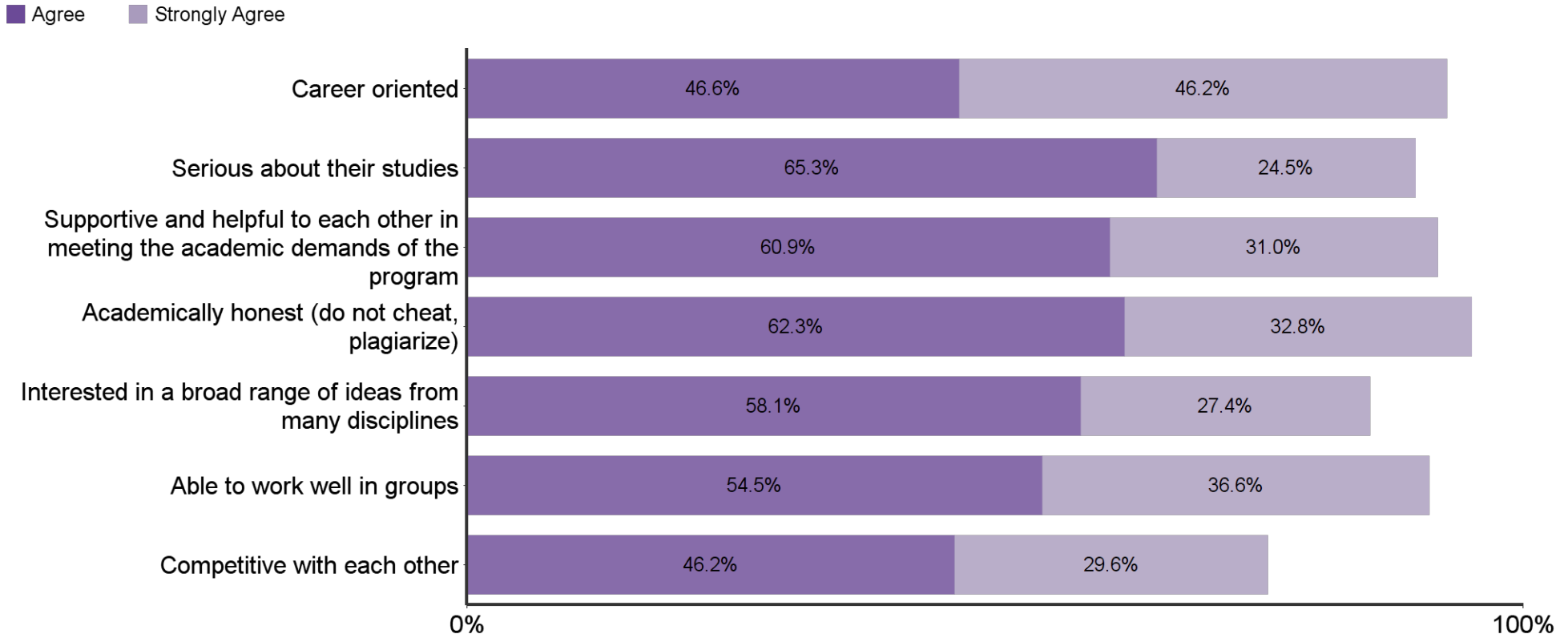
Did your research experience contribute to your career choice?



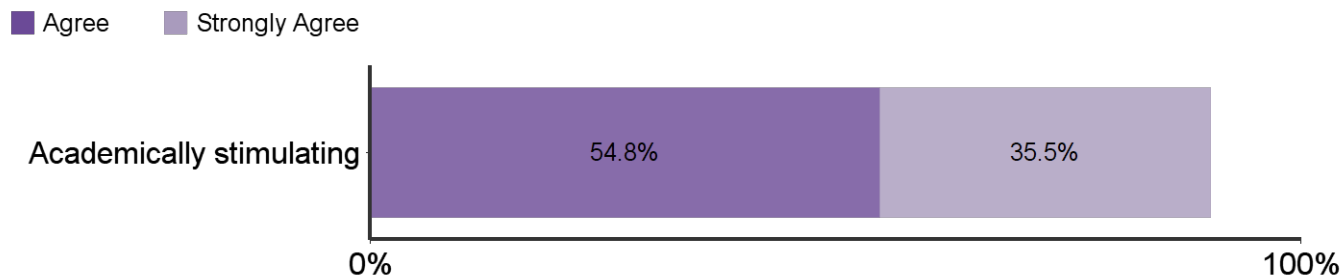
How would you rate the contribution of your mentor to your research?



Students in my major are:



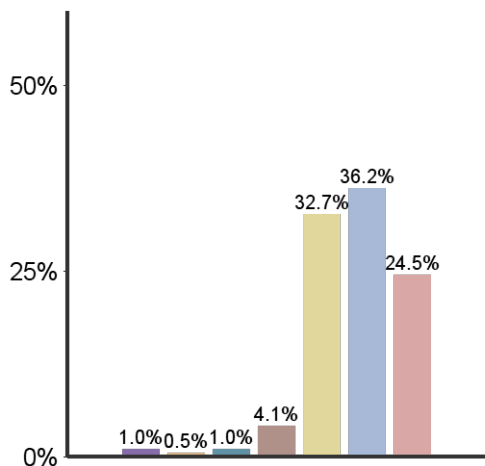
I found my major to be:



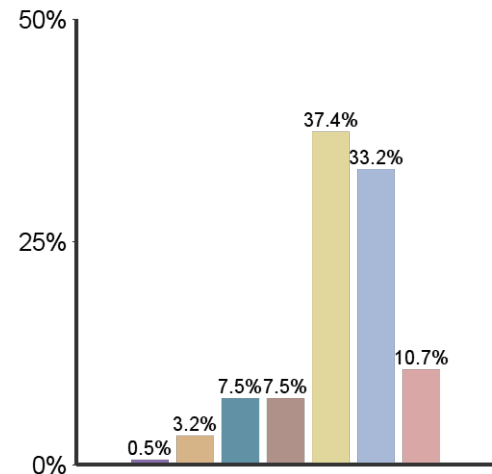
Emphasis K-State placed on the following:



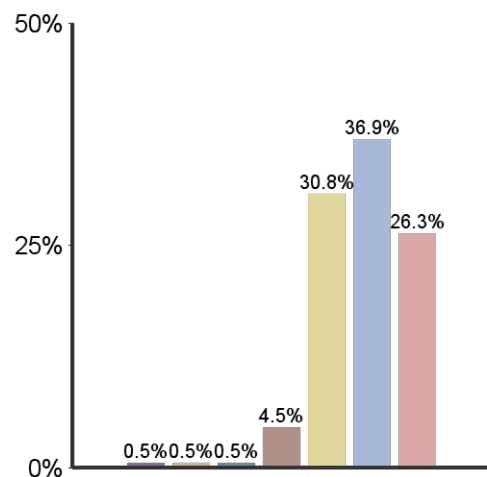
Academic & Scholarly Qualities



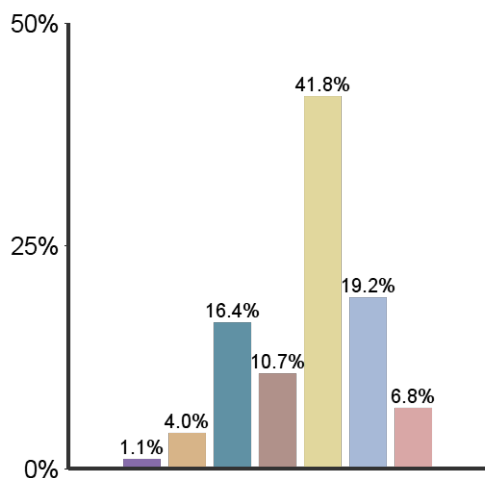
Vocational and occupational competence



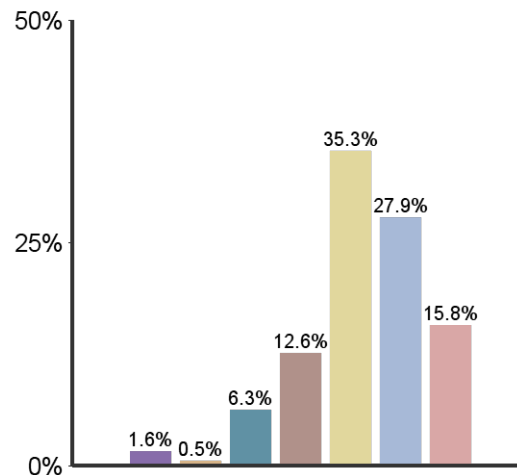
Being critical, evaluative, and analytical



Aesthetic, expressive, & creative qualities

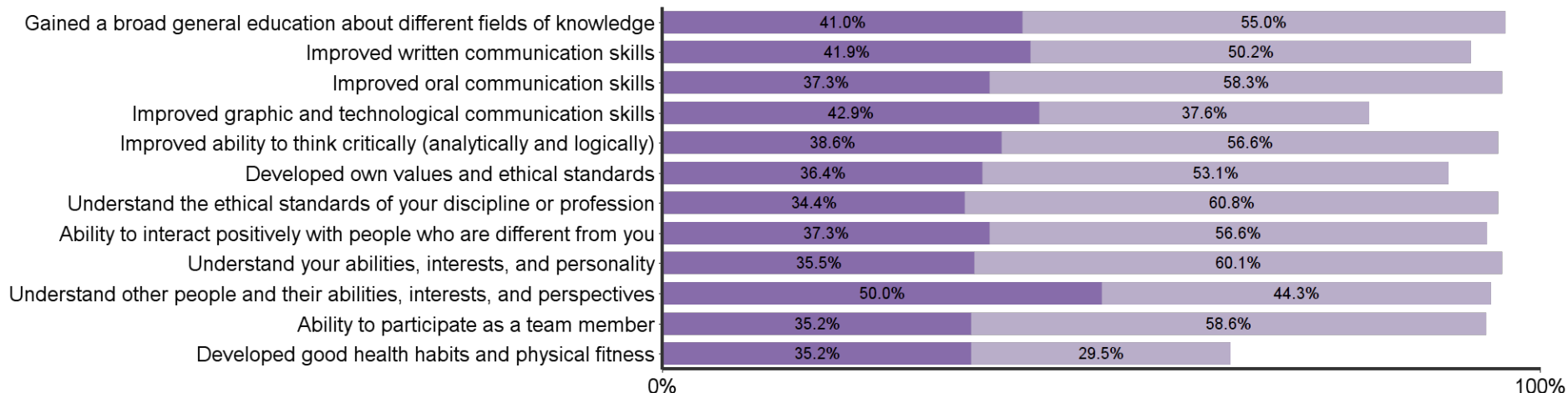


Personal relevance & practical value



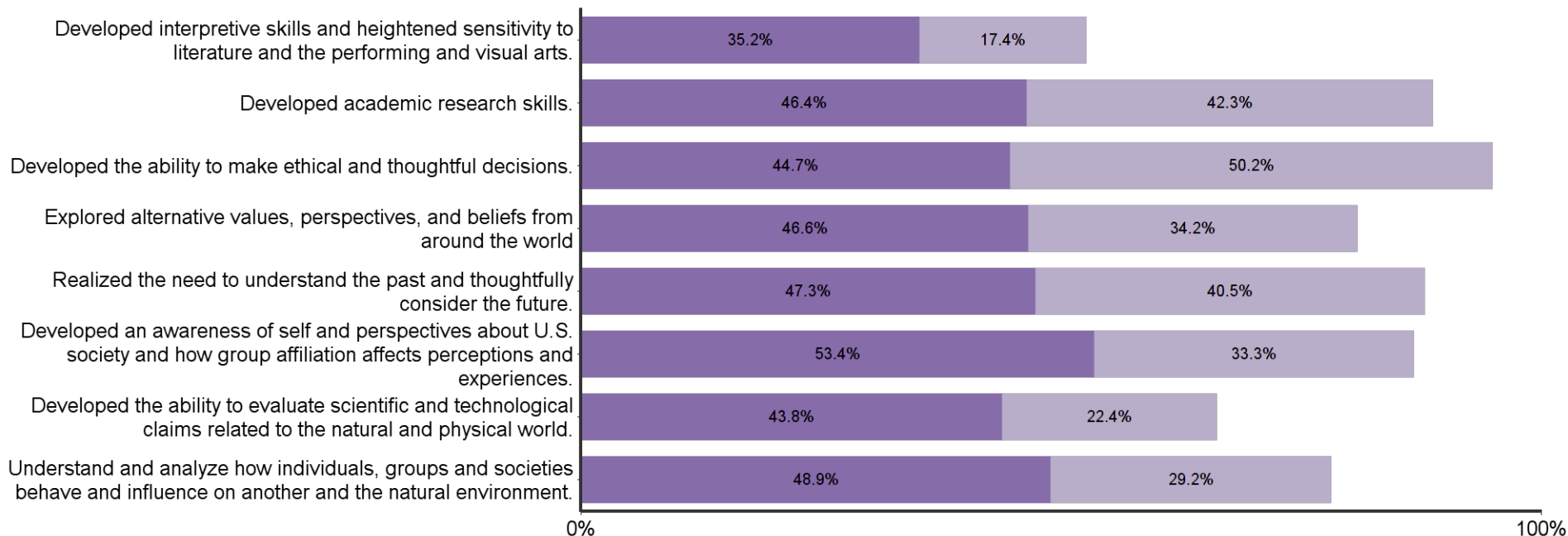
Progress made in K-State undergraduate learning outcomes:

Some A Lot (None and A Little not shown)

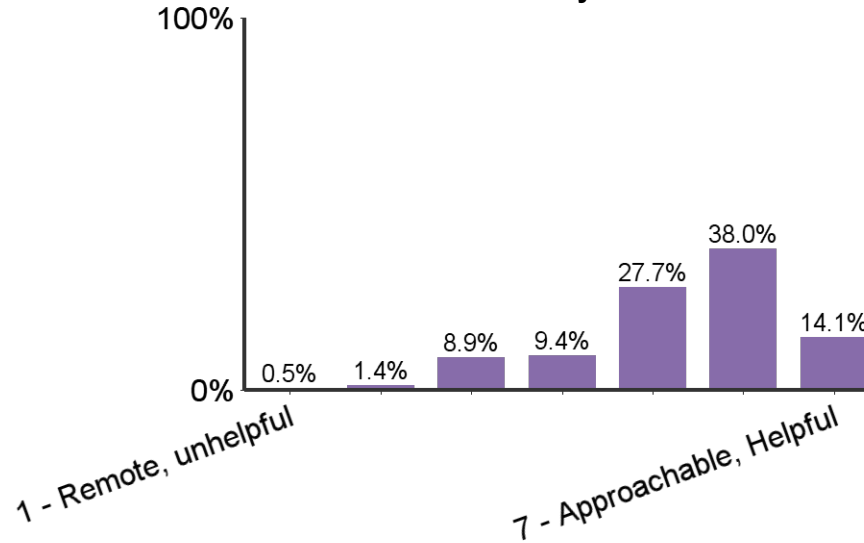


Progress made in K-State 8 general education learning outcomes

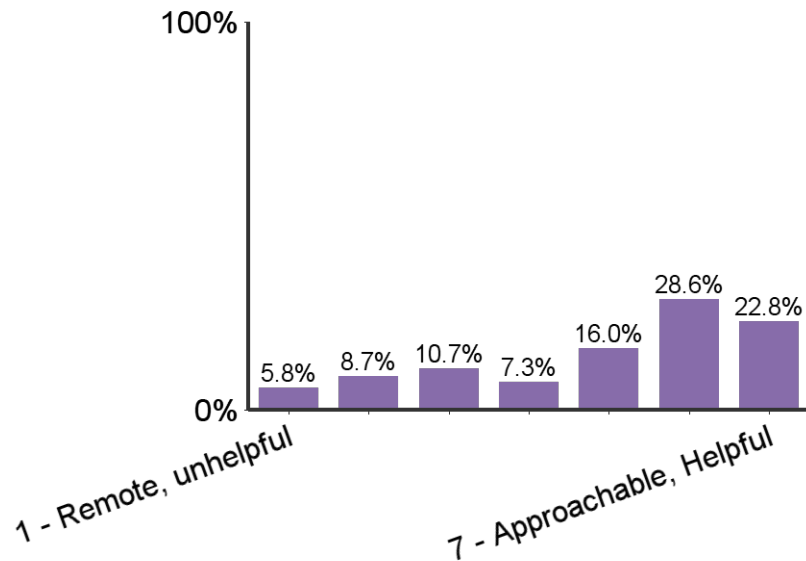
Some A Lot (None and A Little not shown)



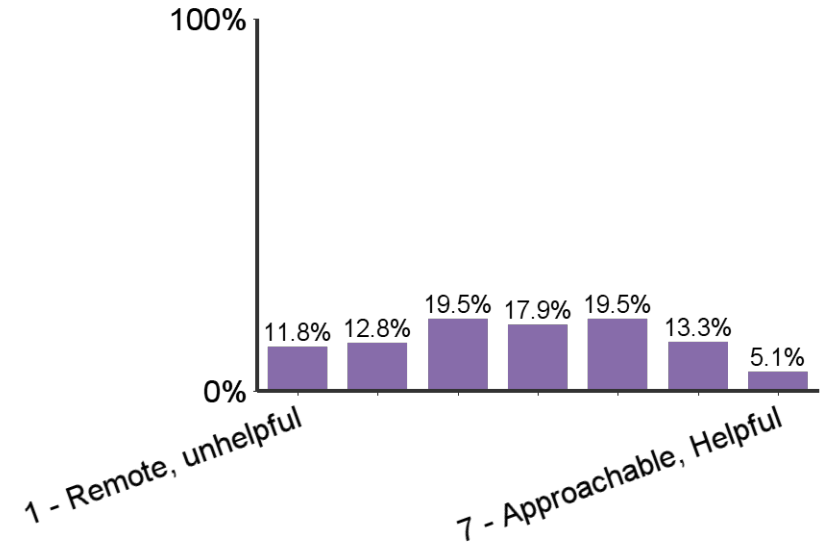
Sense of relationships with faculty:



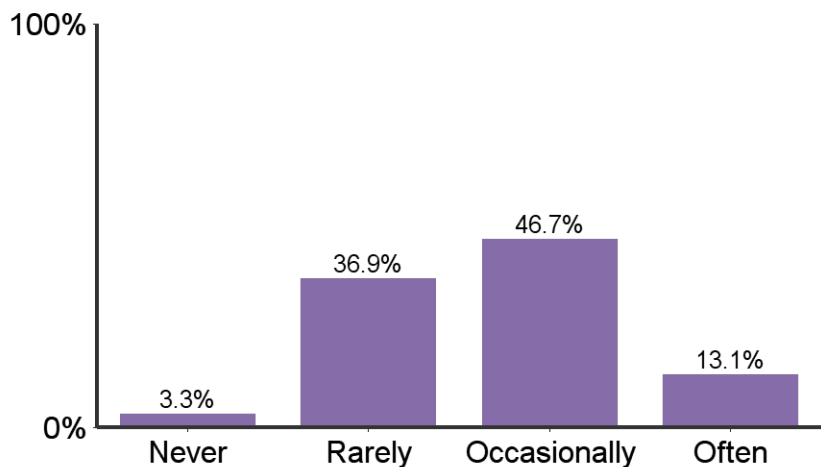
Sense of relationships with academic advisors:



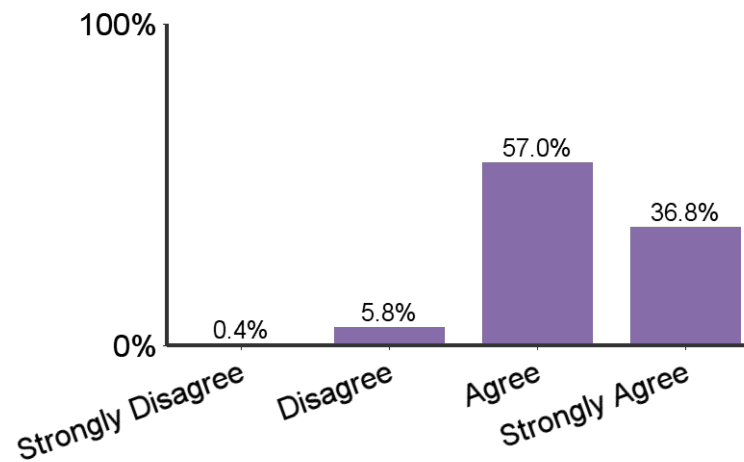
Sense of relationships with GTAs:



How often did you interact with faculty outside of class time?

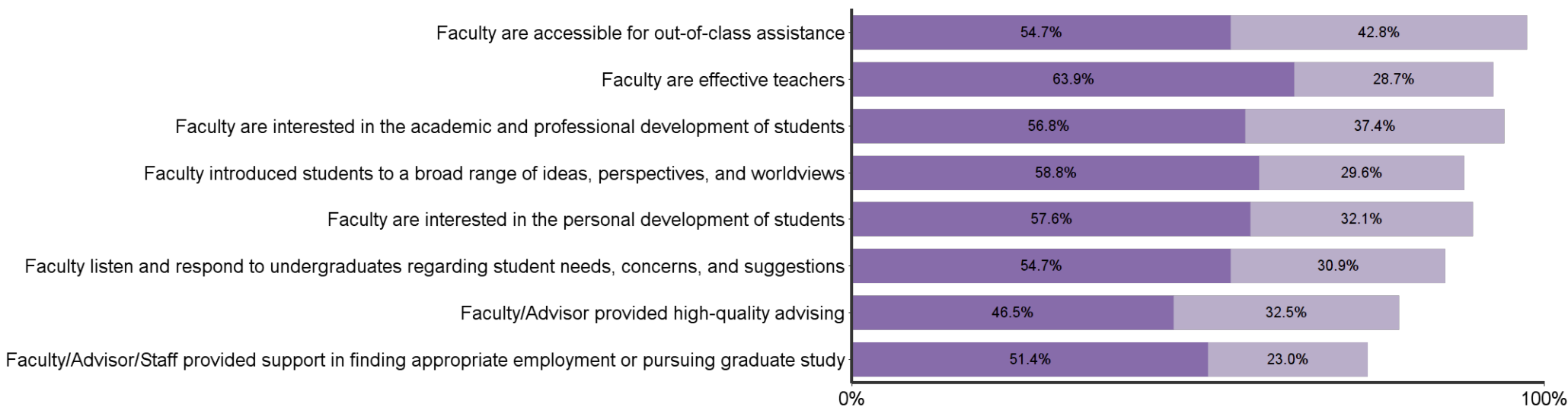









I found my major to be characterized by mutual respect between undergraduates and professors










In my major, faculty:




Agree Strongly Agree




Responses by Major			
	Bar	Percent	Count
Marketing		28.6%	74
Management		22.8%	59
Accounting		20.8%	54
Finance		15.1%	39
Mgmt Information Systems		5.4%	14
General Business Admin		4.2%	11
Entrepreneurship		3.1%	8
Total	-	100.0%	259

Responses by Gender			
	Bar	Percent	Count
Female		50.6%	131
Male		49.4%	128

Responses by Race/Ethnicity			
	Bar	Percent	Count
WHITE		81.9%	212
ASIAN		7.3%	19
HISPANIC		6.6%	17
MULTIRAC		1.9%	5
BLACK		1.5%	4
NOTSPEC		0.4%	1
HAWPACI		0.4%	1

Responses by Semester			
	Bar	Percent	Count
Spring		59.8%	155
Fall		34.0%	88
Summer		6.2%	16

Responses by Citizenship Status			
	Bar	Percent	Count
Citizen		91.5%	237
Non-Citizen		8.5%	22

Credit Hours Transferred to K-State	
	Mean
Transfer Credit Hours	28.8

K-State Undergraduate GPA of Respondents	
	Mean
GPA	3.2

Age of Respondents	
	Mean
Age	23.1

Please rate your level of awareness and satisfaction with the following K-State Offices

	Did Not Know About	Knew About, But Did Not Use	Used and was Dissatisfied	Used and was Satisfied	Count
Office of Student Financial Assistance	0.5%	48.8%	7.8%	42.9%	217
Office of the Registrar	7.4%	33.8%	3.7%	55.1%	216
Office of Non-Traditional and Veteran Student Services	30.6%	62.5%	0.9%	6.0%	216
Office of Student Life	10.6%	65.3%	1.9%	22.2%	216
Office of Diversity	26.7%	64.5%	1.4%	7.4%	217
Office of Career and Employment Services	2.3%	16.8%	4.7%	76.2%	214
Office of Student Activities & Services (activities carnival, SafeRide, student legal services, etc.)	10.1%	50.2%	2.8%	36.9%	217
Office of Parking services	5.1%	24.9%	41.9%	28.1%	217
Counseling Services	8.8%	71.8%	3.7%	15.7%	216
Women's Center	25.0%	69.4%	1.4%	4.2%	216
Student Access Center	31.6%	59.1%	1.4%	7.9%	215
Academic and Career Information Center (assistance with exploring majors and matching your interests, abilities and values to possible occupations)	16.6%	53.9%	3.2%	26.3%	217
Academic Assistance Center (PILOTS, study skills, testing services, University Experience, etc.)	26.4%	61.6%	1.9%	10.2%	216
Educational Supportive Services (ESS) (TRiO, tutoring, writing and math assistance, etc.)	21.2%	59.4%	1.8%	17.5%	217
Powercat Financial Counseling	6.5%	74.7%	2.3%	16.6%	217

Please rate your level of awareness and satisfaction with the following Library services					
	Did Not Know About	Knew About, But Did Not Use	Used and was Dissatisfied	Used and was Satisfied	Count
Library facilities (atmosphere, available seating, hours)	0.9%	6.9%	5.5%	86.6%	217
Library staff (assistance in research, effectively finding information, learning how to use the libraries)	0.9%	34.6%	2.8%	61.8%	217
Library holdings (quality and quantity)	6.0%	44.9%	3.2%	45.8%	216
Access to electronic library resources (databases, electronic journals, and electronic books)	1.8%	18.0%	4.1%	76.0%	217

Please rate your level of awareness and satisfaction with the following Student Life Services:					
	Did Not Know About	Knew About, But Did Not Use	Used and was Dissatisfied	Used and was Satisfied	Count
Residence hall food service	3.8%	35.9%	9.1%	51.2%	209
Residence hall facilities	3.3%	39.0%	11.9%	45.7%	210
Residence hall services and programs	4.8%	46.7%	5.7%	42.9%	210
Lafene Health Center	2.4%	24.3%	18.1%	55.2%	210
K-State Student Union food service	1.9%	12.9%	13.3%	71.9%	210
Union Program Council (UPC)	10.1%	43.3%	1.9%	44.7%	208
Greek experience (fraternity/sorority)	4.8%	48.1%	4.8%	42.4%	210
Recreation Services	3.3%	11.9%	1.9%	82.9%	210
University Life Cafe	46.7%	39.0%	1.4%	12.9%	210
Center for Child Development	32.5%	60.3%	0.5%	6.7%	209
Multicultural Student Organizations	25.2%	61.4%	1.9%	11.4%	210
Alcohol and other drug educational services	16.2%	62.9%	6.7%	14.3%	210
Healthy Decisions (assists students with identifying sources of support)	41.9%	48.6%	1.4%	8.1%	210

Please rate your level of awareness and satisfaction with the following Student Academic Services:					
	Did Not Know About	Knew About, But Did Not Use	Used and was Dissatisfied	Used and was Satisfied	Count
Recruitment materials and manner in which information was made available to you	17.9%	24.6%	5.3%	52.2%	207
Admissions services and online application	7.3%	11.7%	4.9%	76.2%	206
kSIS and its many applications	0.5%	3.4%	13.0%	83.1%	207
DARS (Degree Audit Registration System)	1.0%	3.4%	9.7%	86.0%	207
Scholarship House (Clovia, Smith, Smurthwaite)	16.9%	73.9%	1.4%	7.7%	207
Developing Scholars Program	45.1%	47.1%	1.0%	6.8%	206
McNair Scholars Program	51.9%	40.8%	1.0%	6.3%	206
Convocations/Lectures (e.g. Landon, Lou Douglas, Dorothy Thompson, departmental, etc.)	22.4%	43.9%	1.5%	32.2%	205
SALT (www.saltmoney.org/k-state) - A free online financial tool provided by Powercat Financial Counseling.	10.1%	60.9%	3.9%	25.1%	207

Please rate your level of awareness and satisfaction with the following additional service/areas:					
	Did Not Know About	Knew About, But Did Not Use	Used and was Dissatisfied	Used and was Satisfied	Count
Parking availability	1.4%	10.1%	70.2%	18.3%	208
Parking facilities (maintenance, appearance, etc.)	1.0%	11.1%	35.6%	52.4%	208
Campus bookstore	0.5%	8.7%	17.8%	73.1%	208
Campus safety	2.9%	21.0%	4.4%	71.7%	205
McCain Performance Series	2.9%	41.1%	1.0%	55.1%	207
Collegian (campus newspaper)	2.4%	32.5%	12.1%	52.9%	206
Royal Purple Yearbook	7.2%	75.5%	1.9%	15.4%	208

In your K-State experience, how often have you had discussions with people from the following groups?

	Never	Sometimes	Often	Very Often	Count	Average Value
People with political opinions of than your own	7.0%	38.6%	36.4%	18.0%	228	2.7
People with religious beliefs other than your own	8.3%	43.9%	28.5%	19.3%	228	2.6
People from economic situations other than your own	4.0%	27.8%	46.7%	21.6%	227	2.9
People of races or ethnicities other than your own	3.5%	33.8%	40.4%	22.4%	228	2.8

How often did your K-State courses include diverse perspectives (political views, religious beliefs, racial/ethnic backgrounds, gender identities, etc.) in activities, assignments, and discussions?

	Percent	Count
Never	7.9%	18
Sometimes	47.8%	109
Often	36.4%	83
Very Often	7.9%	18

What were your reasons for choosing the major? (Select all that apply)		
	Count	Percent
Interesting subject	155	62.0%
Job Demand	130	52.0%
Meaningful contribution to society	55	22.0%
Influence of family	76	30.4%
Influence of friends	17	6.8%
Influence of professor	29	11.6%
Respected positions	88	35.2%
High salaries	93	37.2%
Challenge	59	23.6%
Enjoyed courses in the field	142	56.8%
Friends in major	20	8.0%

What percentage of your courses at K-State did you complete through distance education (i.e. online, video conferencing, etc.)?		
	Count	Percent
I did not complete any courses through distance education; all of my courses were completed on-campus	69	27.3%
25% or less	164	64.8%
26%-50%	8	3.2%
51%-75%	5	2.0%
76%-99%	2	0.8%
All of my courses were completed through distance education	5	2.0%
Total	253	100.0%

During your time at K-State, how many of your courses included a service-learning component (such as a community or volunteer project)?		
	Count	Percent
None	112	44.6%
Some	138	55.0%
Most	1	0.4%
All		
Total	251	100.0%

During your years at Kansas State University, how many hours per week, on average, did you spend in the following activities?					
	None	1-10	11-20	21-30	30+
Internship/Practicum	50.8%	19.8%	10.3%	5.0%	5.8%
On-campus employment	48.8%	12.5%	25.8%	9.6%	3.3%
Off-campus employment	44.0%	12.0%	19.1%	11.6%	13.3%
Volunteer (unpaid) activities	37.4%	52.5%	5.5%	1.3%	3.4%

What is your general attitude toward Kansas State University?		
	Count	Percent
Very Negative		
Negative	7	2.8%
Positive	94	37.2%
Very Positive	152	60.1%
Total	253	100.0%

When you applied to K-State, either as a new freshmen or transfer student, it was your:		
	Count	Percent
First Choice	193	76.9%
Second Choice	46	18.3%
Third Choice	9	3.6%
Last Choice	3	1.2%
Total	251	100.0%

Would you recommend Kansas State University to others?		
	Count	Percent
Definitely No		
Probably No	8	3.2%
Probably Yes	65	25.7%
Definitely Yes	180	71.1%
Total	253	100.0%

Students in my major are:					
	Strongly Disagree	Disagree	Agree	Strongly Agree	Count
Career oriented	1.2%	6.1%	46.6%	46.2%	247
Serious about their studies	1.2%	9.0%	65.3%	24.5%	245
Supportive and helpful to each other in meeting the academic demands of the program	0.4%	7.7%	60.9%	31.0%	248
Academically honest (do not cheat, plagiarize)	1.2%	3.6%	62.3%	32.8%	247
Interested in a broad range of ideas from many disciplines	1.2%	13.3%	58.1%	27.4%	248
Able to work well in groups	0.8%	8.1%	54.5%	36.6%	246
Competitive with each other	1.6%	22.7%	46.2%	29.6%	247

Students in my major are encouraged to:					
	Strongly Disagree	Disagree	Agree	Strongly Agree	Count
Become personally acquainted with the department's faculty	2.0%	14.6%	55.9%	27.5%	247
Participate in professional interest groups	1.6%	13.0%	51.4%	34.0%	247
Attend professional seminars and colloquia	1.6%	16.7%	50.4%	31.3%	246
Become familiar with current and emerging technology	2.8%	16.3%	54.5%	26.4%	246
Participate in research or creative projects with faculty or other students	3.3%	26.4%	51.2%	19.1%	246

I found the major to be:

	Strongly Disagree	Disagree	Agree	Strongly Agree	Count
Characterized by mutual respect between undergraduate majors and professors	0.4%	5.8%	57.0%	36.8%	242
Academically stimulating	1.6%	8.1%	54.8%	35.5%	248

In my major:

	Strongly Disagree	Disagree	Agree	Strongly Agree	Count
Faculty are accessible for out-of-class assistance	0.4%	2.1%	54.7%	42.8%	243
Faculty are effective teachers	0.8%	6.6%	63.9%	28.7%	244
Faculty are interested in the academic and professional development of students	0.8%	4.9%	56.8%	37.4%	243
Faculty introduced students to a broad range of ideas, perspectives, and worldviews	0.8%	10.7%	58.8%	29.6%	243
Faculty are interested in the personal development of students	0.4%	9.9%	57.6%	32.1%	243
Faculty listen and respond to undergraduates regarding student needs, concerns, and suggestions	0.8%	13.6%	54.7%	30.9%	243
Faculty/Advisor provided high-quality advising	5.8%	15.2%	46.5%	32.5%	243
Faculty/Advisor/Staff provided support in finding appropriate employment or pursuing graduate study	4.9%	20.6%	51.4%	23.0%	243

Sense of belonging: (Rated on a scale 1 to 7, 1 being a sense of alienation and 7 a sense of belonging)		
	Count	Average Value
Relationships with other students, student groups, and activities	217	5.4

Relationships with faculty and staff: (Rated on a scale of 1 to 7, 1 being unsympathetic, remote, unhelpful, and 7 approachable, understandable, helpful)		
	Count	Average Value
Relationships with faculty members	213	5.3
Relationships with academic advisor(s)	206	5
Relationships with Graduate Teaching Assistants (GTAs)	195	3.8

How often did you interact with faculty outside of class time?		
	Count	Percent
Never	8	3.3%
Rarely	90	36.9%
Occasionally	114	46.7%
Often	32	13.1%
Total	244	100.0%

Did you participate in an undergraduate research experience of creative endeavor?		
	Count	Percent
Yes	113	46.9%
No	128	53.1%
Total	241	100.0%

How would you rate the contribution of your mentor research/creative experience?		
	Count	Percent of those who participated in research
Inadequate	7	6.3%
Fair	35	31.5%
Good	48	43.2%
Excellent	21	18.9%
Total	111	100.0%

To what extent did your research/creative experience contribute to your academic success?		
	Count	Percent of those who participated in research
None	6	5.5%
Little	24	22.0%
Somewhat	56	51.4%
Very Much	23	21.1%
Total	109	100.0%

Did your research/creative experience contribute to your career choice?		
	Count	Percent of those who participated in research
No	44	40.4%
Somewhat	47	43.1%
Definitely	18	16.5%
Total	109	100.0%

How many semesters were you involved in a research/creative endeavor?		
	Count	Percent of those who participated in research
1-2	61	56.0%
3-4	27	24.8%
5-6	15	13.8%
7-8	3	2.8%
9 or more	3	2.8%
Total	109	100.0%

What types of dissemination of your undergraduate research/creative endeavor did you successfully achieve? (select all that apply)		
	Count	Percent of those who participated in research
University research seminar presentation/poster	6	5.7%
Class presentation	93	87.7%
Poster at a conference outside of campus	5	4.7%
Oral presentation at a conference outside of campus	20	18.9%
Public performance/exhibition on campus	12	11.3%
Public performance/exhibition outside of campus	18	17.0%
Peer reviewed publication	18	17.0%
Other:	5	4.7%

As a result of your experience at Kansas State University, how much progress do you feel you have made in each of the following K-State 8 areas?						
	None	Little	Some	A Lot	Count	Average Value
Developed interpretive skills and heightened sensitivity to literature and the performing and visual arts.	10.0%	37.4%	39.2%	17.4%	219	2.6
Developed academic research skills.	1.4%	10.0%	56.9%	42.3%	220	3.3
Developed the ability to make ethical and thoughtful decisions.	0.9%	4.1%	37.3%	50.2%	219	3.4
Explored alternative values, perspectives, and beliefs from around the world	1.8%	17.4%	41.2%	34.2%	219	3.1
Realized the need to understand the past and thoughtfully consider the future.	1.8%	10.5%	42.9%	40.5%	220	3.3
Developed an awareness of self and perspectives about U.S. society and how group affiliation affects perceptions and experiences.	1.8%	11.4%	47.1%	33.3%	219	3.2
Developed the ability to evaluate scientific and technological claims related to the natural and physical world.	6.4%	27.4%	45.1%	22.4%	219	2.8
Understand and analyze how individuals, groups and societies behave and influence on another and the natural environment.	1.8%	20.1%	41.2%	29.2%	219	3.1

As a result of your experience at Kansas State University, how much progress do you feel you have made in each of the following Undergraduate Learning Outcomes?						
	None	Little	Some	A Lot	Count	Average Value
Gained a broad general education about different fields of knowledge	0.4%	3.5%	41.0%	55.0%	229	3.5
Improved written communication skills	0.9%	7.0%	41.9%	50.2%	227	3.4
Improved oral communication skills	0.4%	3.9%	37.3%	58.3%	228	3.5
Improved graphic and technological communication skills	2.7%	16.8%	42.9%	37.6%	226	3.2
Improved ability to think critically (analytically and logically)	1.8%	3.1%	38.6%	56.6%	228	3.5
Developed own values and ethical standards	1.3%	9.2%	36.4%	53.1%	228	3.4
Understand the ethical standards of your discipline or profession	0.4%	4.4%	34.4%	60.8%	227	3.6
Ability to interact positively with people who are different from you	0.9%	5.3%	37.3%	56.6%	228	3.5
Understand your abilities, interests, and personality	0.4%	3.9%	35.5%	60.1%	228	3.6
Understand other people and their abilities, interests, and perspectives	0.4%	5.3%	50.0%	44.3%	228	3.4
Ability to participate as a team member	0.9%	5.3%	35.2%	58.6%	227	3.5
Developed good health habits and physical fitness	9.3%	26.0%	35.2%	29.5%	227	2.9

Universities differ from one another in the extent to which they emphasize various aspects of student development. Think of your experience at Kansas State University. To what extent was each of the following emphasized? (Rated on a scale of 1 to 7, 1 being a weak emphasis and 7 strong emphasis)

	Count	Average Value
The development of academic, scholarly, and intellectual qualities	196	5.7
The development of aesthetic, expressive, and creative qualities	177	4.7
Being critical, evaluative, and analytical	198	5.8
The development of vocational and occupational competence	187	5.2
The personal relevance and practical value of your courses	190	5.3

What are your plans after graduation?

	Count	%
Have a job that will continue after graduation	22	10.3%
Have a job lined up to begin after graduation	109	50.9%
Will begin to look for a job	42	19.6%
Pursue additional undergraduate education	1	0.5%
Will attend graduate school	35	16.4%
Volunteer service (Peace Corps, AmeriCorps, etc.)	1	0.5%
No plans for a job at this time	1	0.5%
Military		0.0%
Starting or raising a family		0.0%
Other	3	1.4%