

*\*Responses for this report only include seniors within the College, except where noted.*

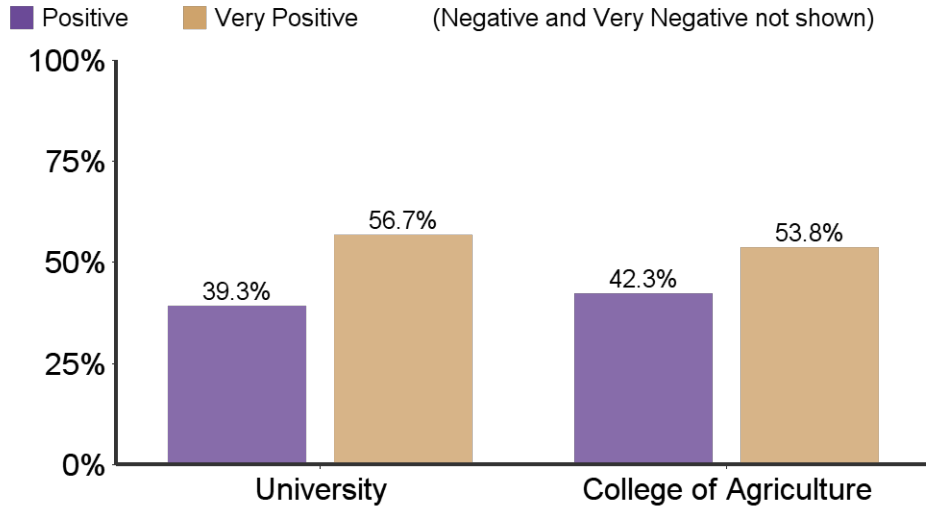
	<b>Agriculture</b>	<b>University</b>
Responses	<b>311</b>	1718
Initial Population	<b>576</b>	3672
Response Rate	<b>54%</b>	46.8%

**Survey Information:**

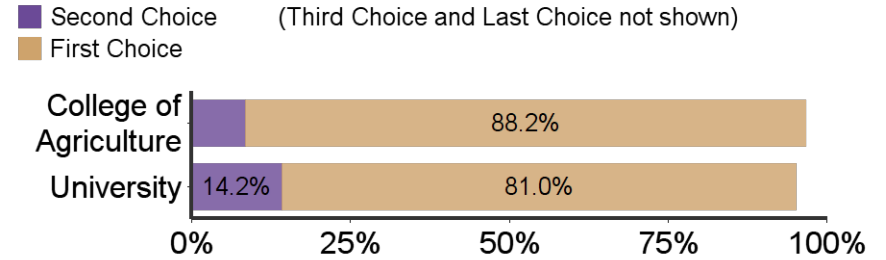
- The Senior Survey is designed to give undergraduate students the opportunity to reflect upon their K-State experiences. This information is used to improve the college experience for future students by identifying strengths in our programs as well as areas that need further development. The survey includes issues relating to satisfaction with K-State regarding academic programs, intellectual and personal growth, student services, and preparation for a career or a graduate/professional school.
- The survey is offered electronically (through Qualtrics) to seniors who have been cleared for graduation by their respective colleges

Table of Contents	
Introduction	1
Section I: Overall Satisfaction	2
Section IIa: 2025--Research, Scholarly, Creative Active Discovery	3
Section IIb: 2025--Undergraduate Educational Experience	5
Section IIc--Faculty and Staff	8
Section III: Demographics	10
Section IV: K-State Office and Services	12
Section V: Results Tables	15

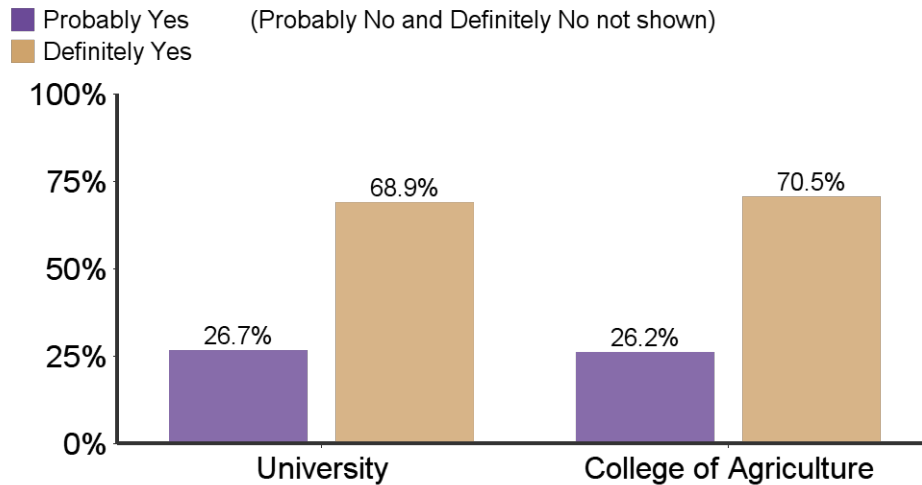
**What is your general attitude toward K-State?**



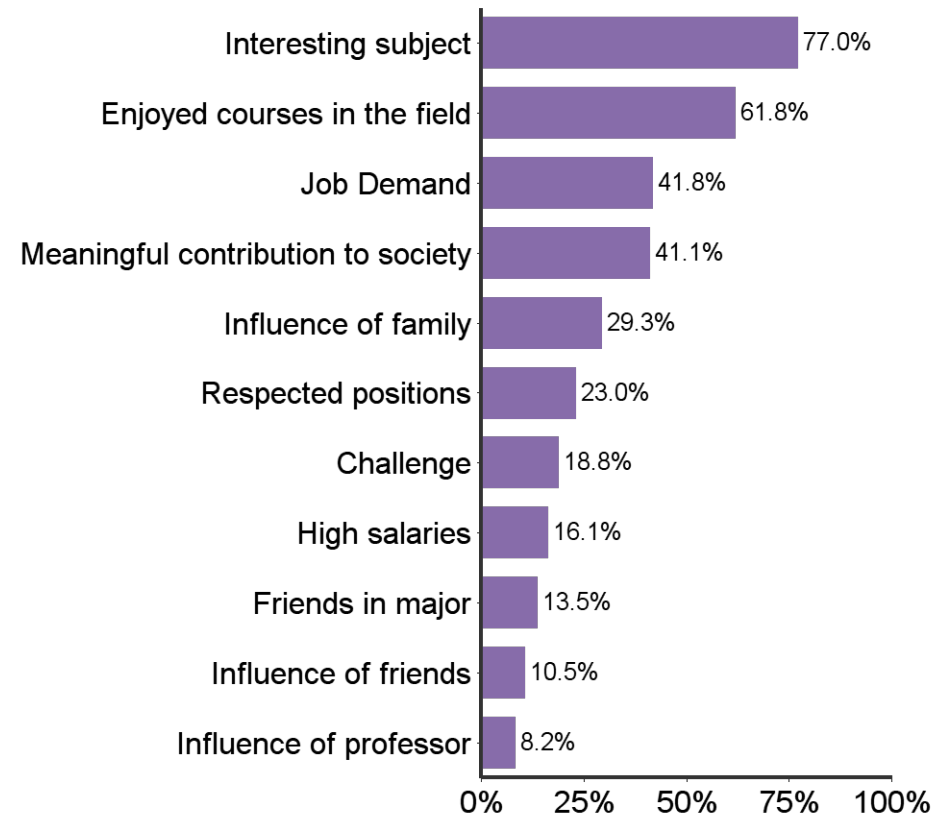
**When you applied to K-State, it was your:**



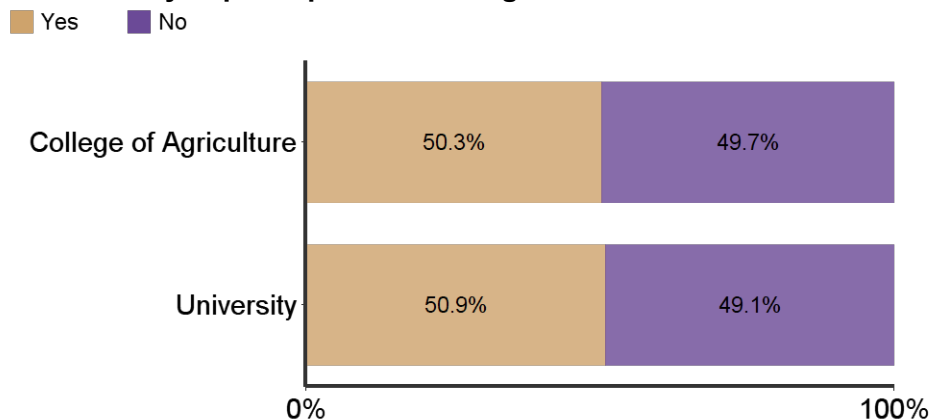
**Would you recommend K-State to others?**



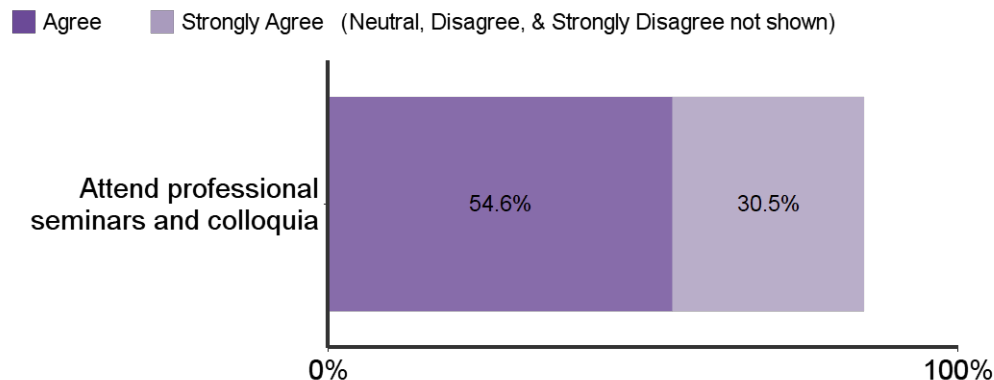
**Reasons for choosing major**



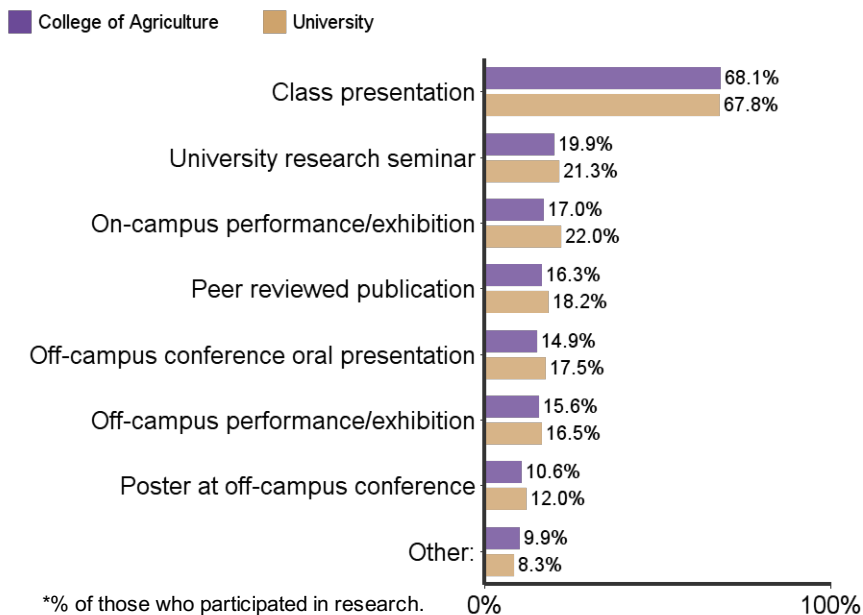
**Have you participated in undergraduate research?**



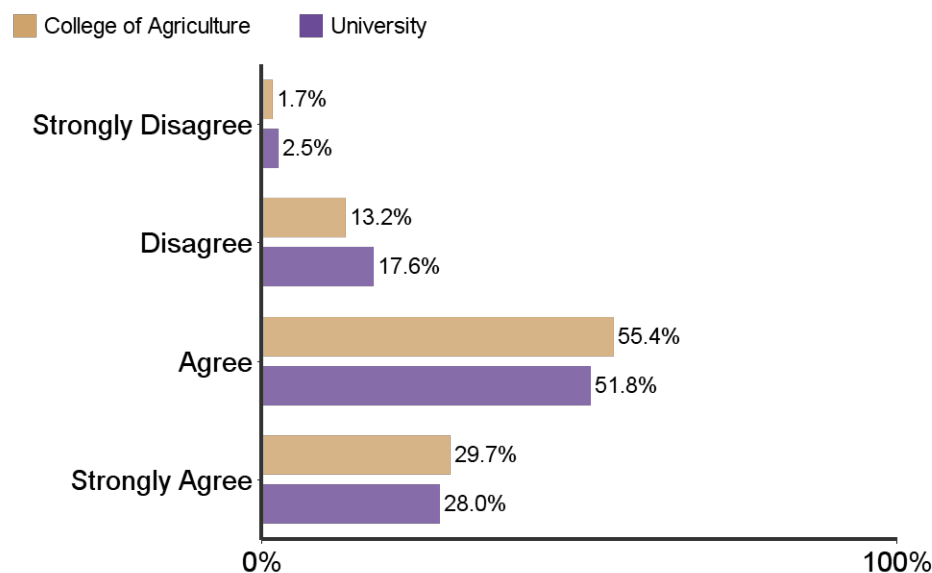
**Students in my major are encouraged to:**



**What type(s) of research dissemination have you successfully achieved?**

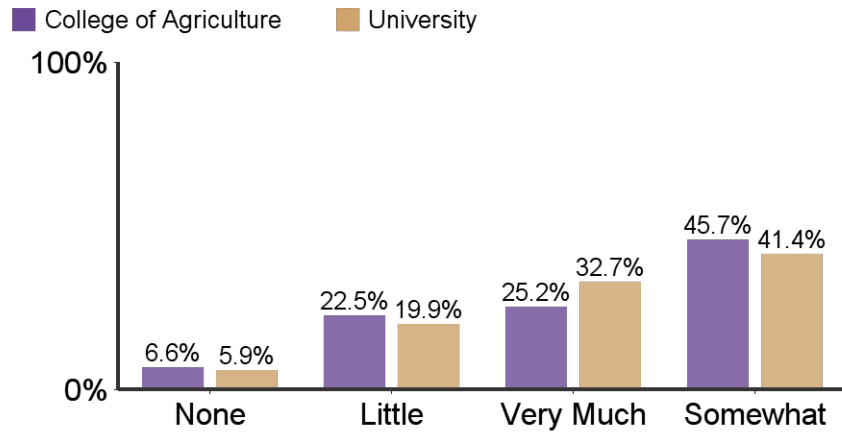


**Students in my major are encouraged to participate in research/creative projects:**

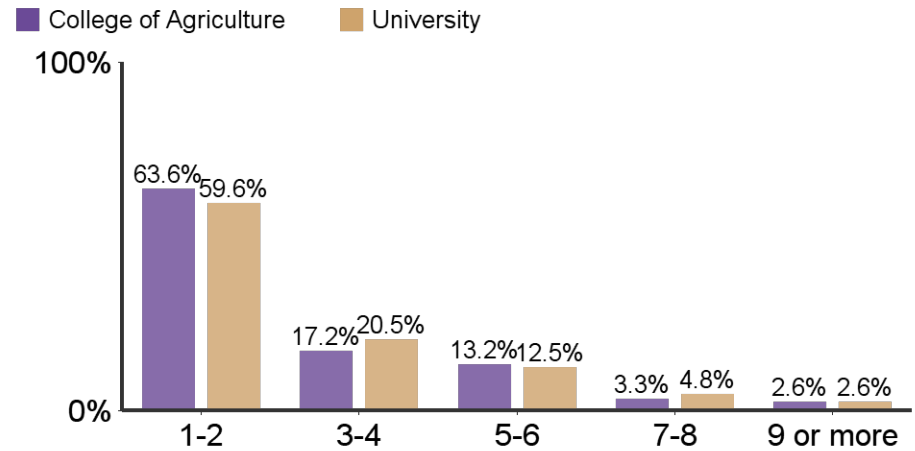


\*All results on the corresponding page include only responses from those who participated in research.

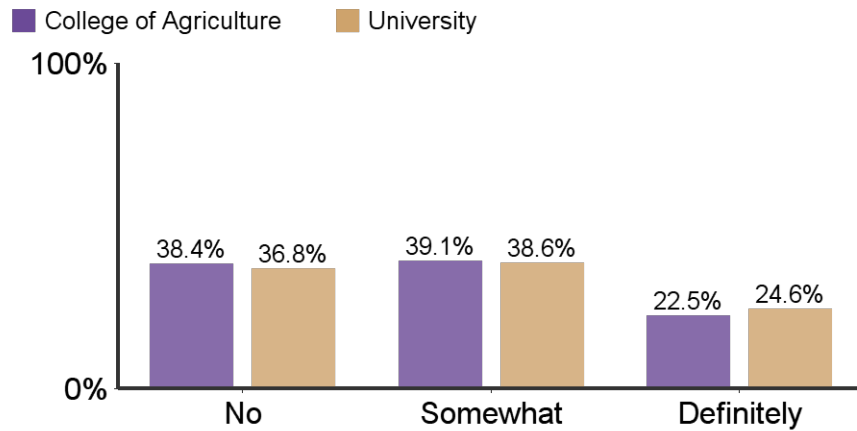
**To what extent did your research experience contribute to your academic success?**



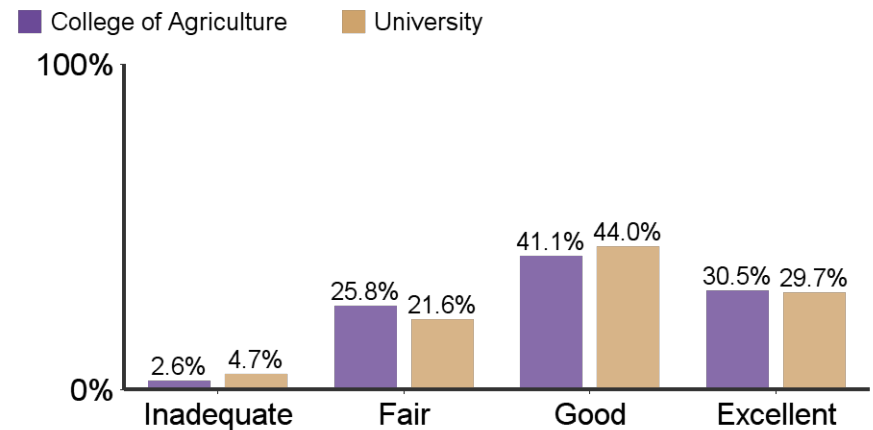
**Number of semesters involved in a research or creative endeavor:**

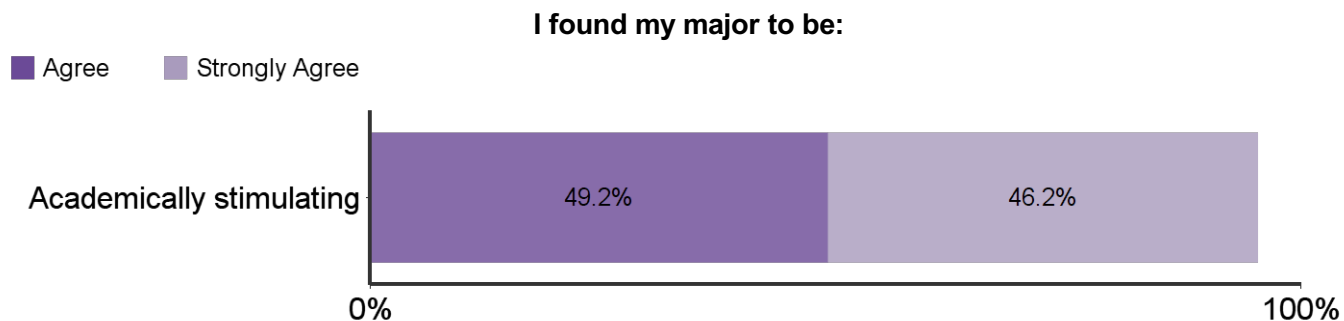
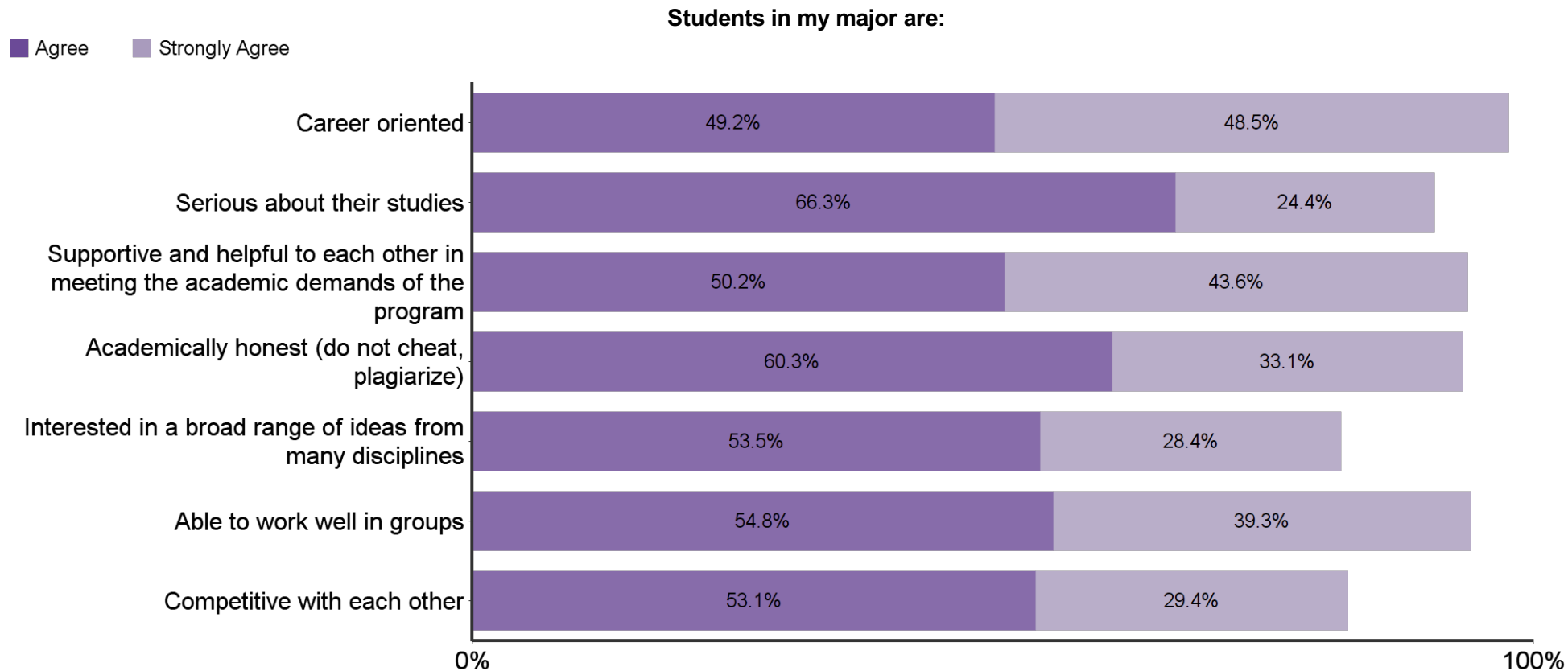


**Did your research experience contribute to your career choice?**



**How would you rate the contribution of your mentor to your research?**

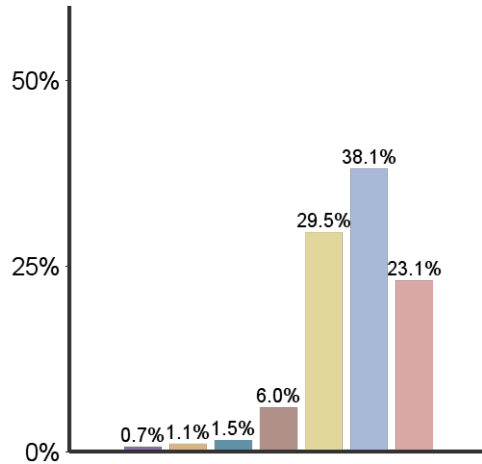




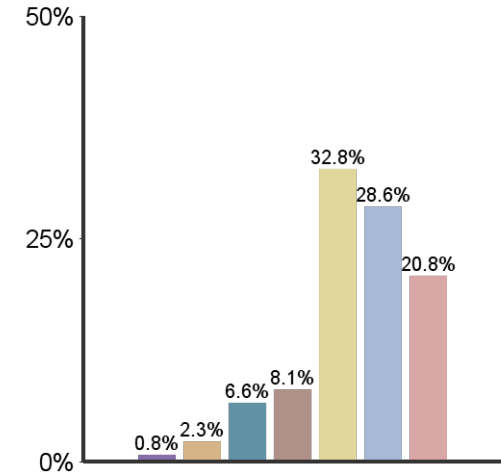
**Emphasis K-State placed on the following:**



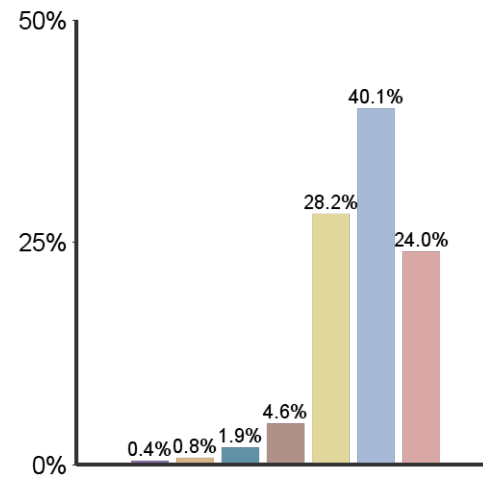
**Academic & Scholarly Qualities**



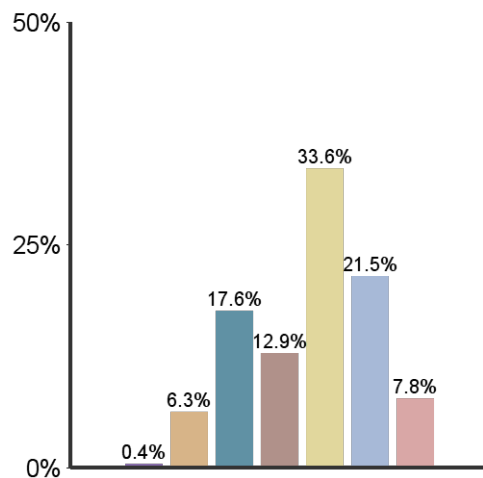
**Vocational and occupational competence**



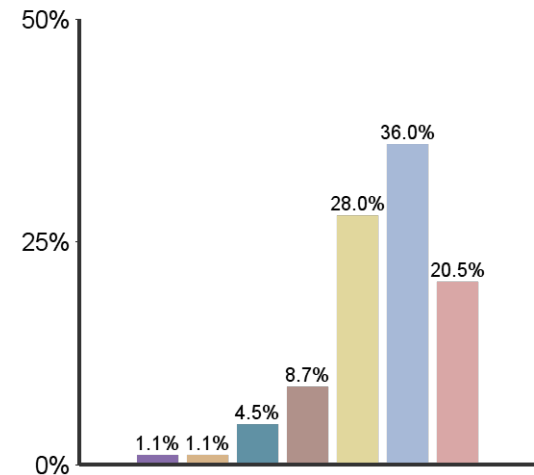
**Being critical, evaluative, and analytical**



**Aesthetic, expressive, & creative qualities**



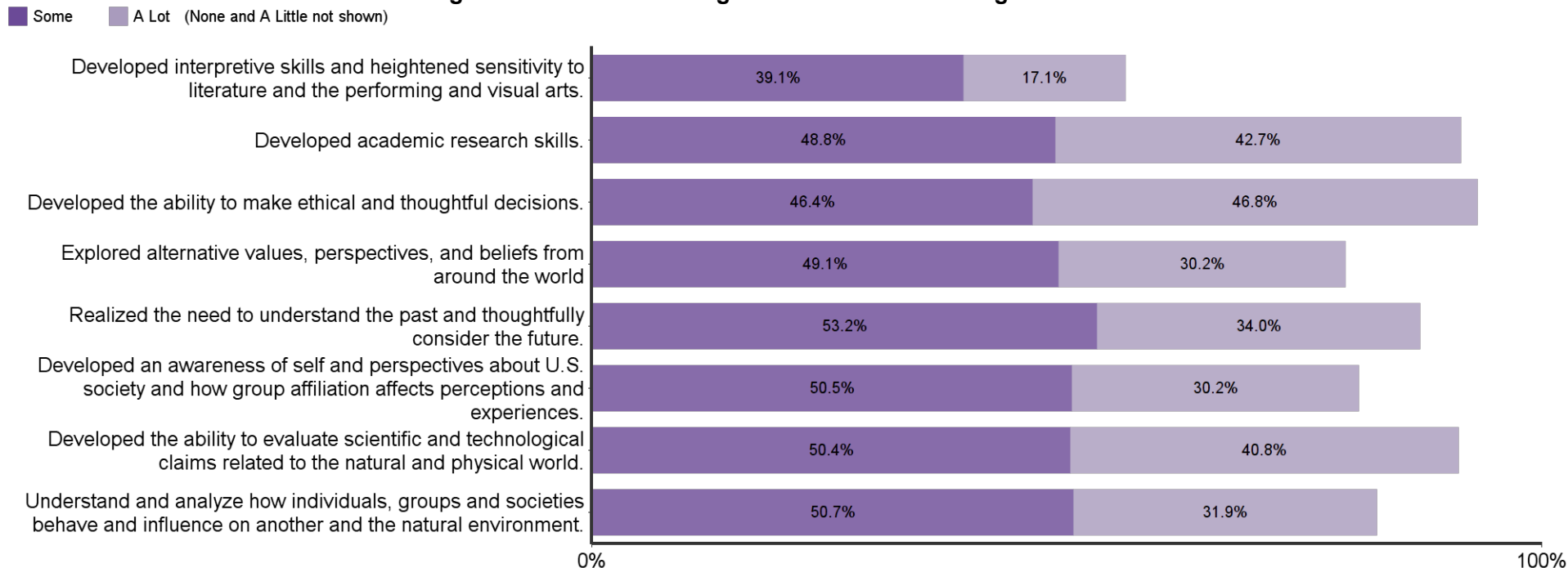
**Personal relevance & practical value**



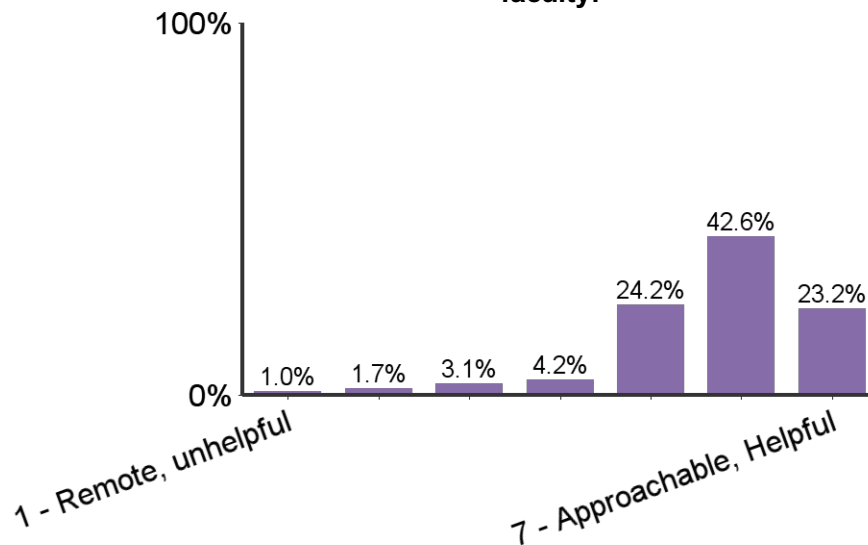
**Progress made in K-State undergraduate learning outcomes:**



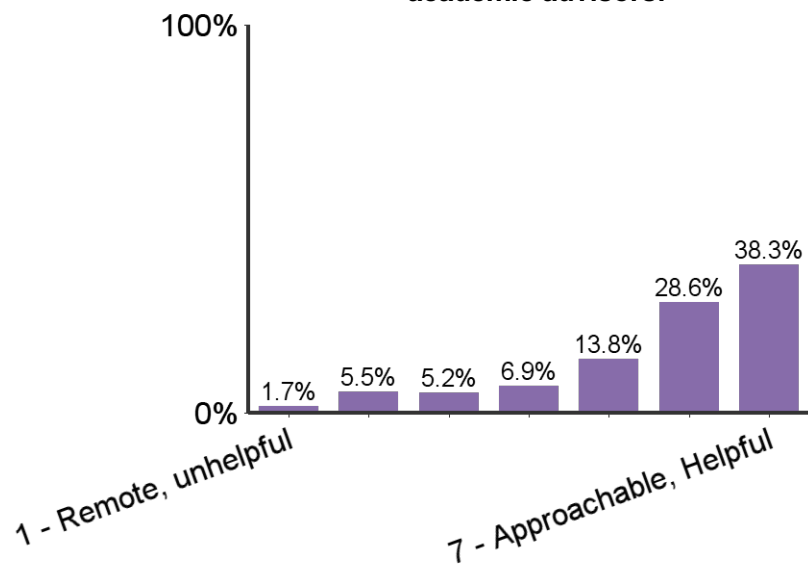
**Progress made in K-State 8 general education learning outcomes**



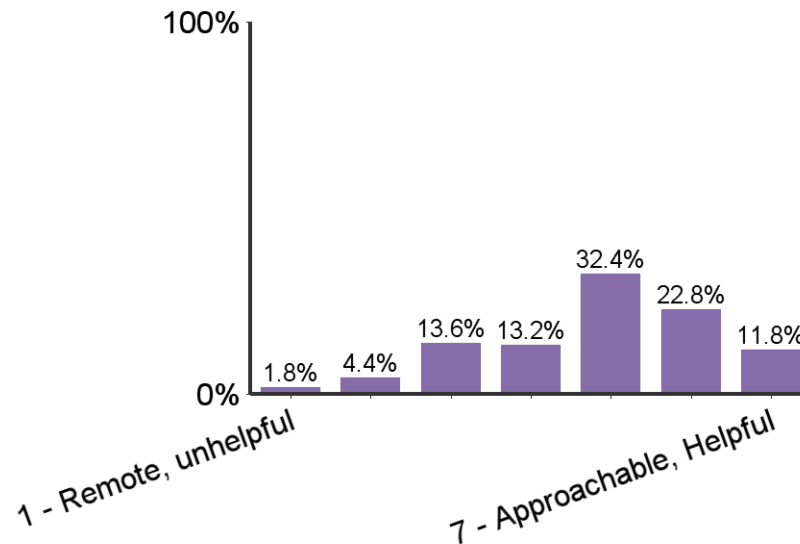
**Sense of relationships with faculty:**



**Sense of relationships with academic advisors:**

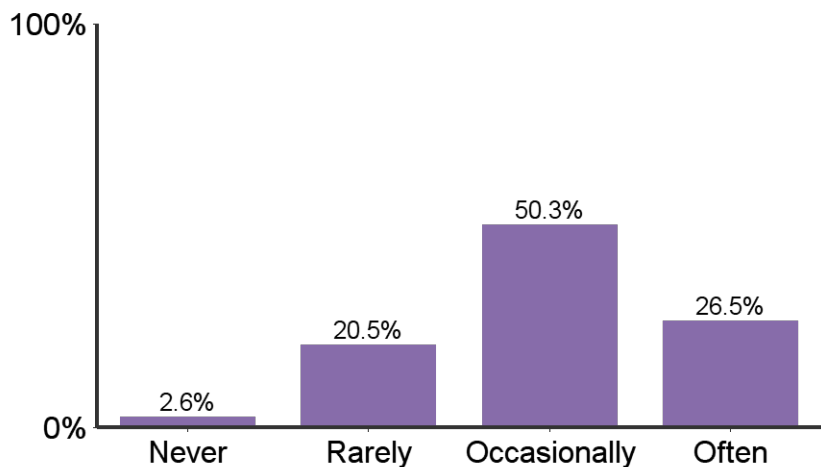


**Sense of relationships with GTAs:**

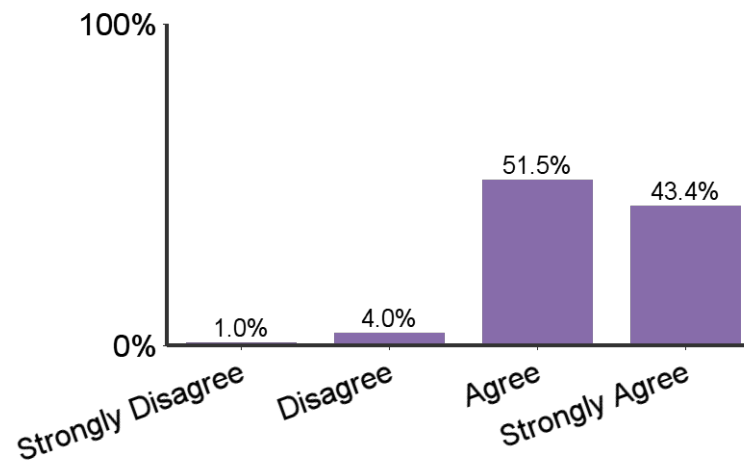




How often did you interact with faculty outside of class time?

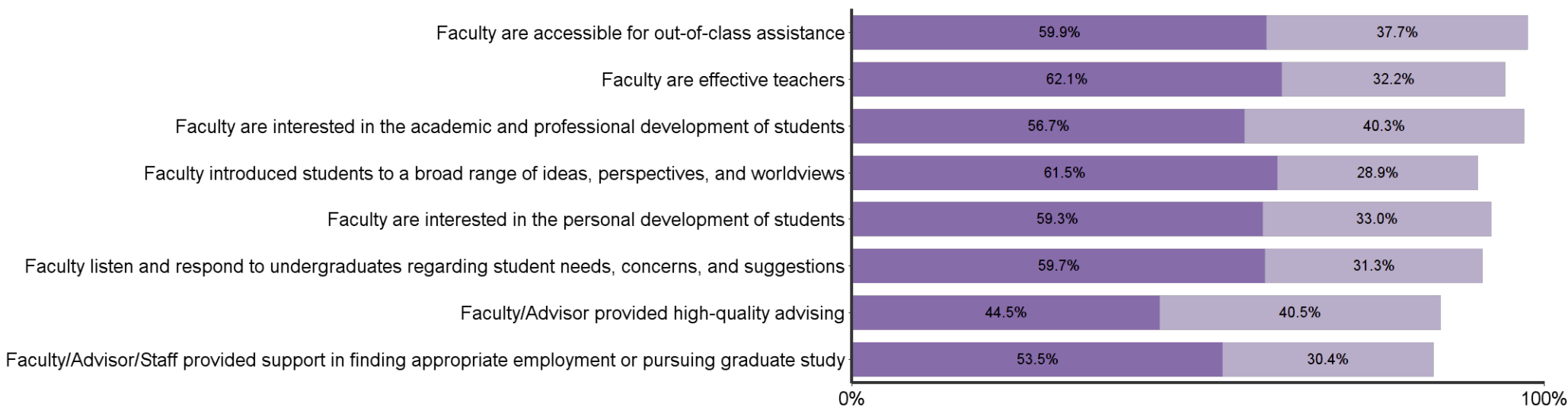


I found my major to be characterized by mutual respect between undergraduates and professors



In my major, faculty:

Agree Strongly Agree



**Responses by Major**

	Bar	Percent	Count
Animal Sciences and Industry		37.0%	115
Agribusiness		9.3%	29
Food Science And Industry		9.3%	29
Agricultural Economics		6.4%	20
Agronomy		6.1%	19
Horticulture		4.8%	15
Feed Science & Mgmt		4.2%	13
Bakery Science And Mgmt		4.2%	13
Agric Comm & Journalism		3.5%	11
Agricultural Education		3.2%	10
Agricultural Technology Mgmt		3.2%	10
Milling Science & Management		2.9%	9
Wildlife&Outdoor Ent Mangt		2.3%	7
Veterinary Medicine		2.3%	7
Park Mgmt & Conservation		1.3%	4
Total	-	100.0%	311

**Responses by Gender**

	Bar	Percent	Count
Female		54.7%	170
Male		45.3%	141

**Responses by Race/Ethnicity**

	Bar	Percent	Count
WHITE		86.5%	269
HISPANIC		7.1%	22
ASIAN		3.2%	10
MULTIRAC		1.9%	6
BLACK		1.0%	3
NOTSPEC		0.3%	1

**Responses by Semester**

	Bar	Percent	Count
Spring		63.7%	198
Fall		33.1%	103
Summer		3.2%	10

Responses by Citizenship Status			
	Bar	Percent	Count
Citizen		96.1%	299
Non-Citizen		3.9%	12

Credit Hours Transferred to K-State	
	Mean
Transfer Credit Hours	34.7

K-State Undergraduate GPA of Respondents	
	Mean
GPA	3.1

Age of Respondents	
	Mean
Age	22.9

**Please rate your level of awareness and satisfaction with the following K-State Offices**

	Did Not Know About	Knew About, But Did Not Use	Used and was Dissatisfied	Used and was Satisfied	Count
Office of Student Financial Assistance	2.8%	42.0%	8.9%	46.3%	281
Office of the Registrar	7.5%	37.3%	5.0%	50.2%	279
Office of Non-Traditional and Veteran Student Services	38.4%	56.6%	1.4%	3.6%	281
Office of Student Life	8.6%	66.7%	2.9%	21.9%	279
Office of Diversity	29.7%	63.8%	1.4%	5.0%	279
Office of Career and Employment Services	2.5%	27.4%	5.7%	64.4%	281
Office of Student Activities & Services (activities carnival, SafeRide, student legal services, etc.)	15.1%	53.0%	1.4%	30.5%	279
Office of Parking services	6.0%	21.4%	39.5%	33.1%	281
Counseling Services	10.7%	72.9%	3.2%	13.2%	280
Women's Center	27.8%	61.2%	2.1%	8.9%	281
Student Access Center	38.4%	50.5%	1.4%	9.6%	281
Academic and Career Information Center (assistance with exploring majors and matching your interests, abilities and values to possible occupations)	30.0%	52.1%	2.5%	15.4%	280
Academic Assistance Center (PILOTS, study skills, testing services, University Experience, etc.)	39.9%	51.6%	1.8%	6.8%	281
Educational Supportive Services (ESS) (TRiO, tutoring, writing and math assistance, etc.)	27.4%	50.9%	3.6%	18.1%	281
Powercat Financial Counseling	13.2%	74.0%	1.1%	11.7%	281

<b>Please rate your level of awareness and satisfaction with the following Library services</b>					
	Did Not Know About	Knew About, But Did Not Use	Used and was Dissatisfied	Used and was Satisfied	Count
Library facilities (atmosphere, available seating, hours)	1.1%	10.3%	5.3%	83.3%	281
Library staff (assistance in research, effectively finding information, learning how to use the libraries)	2.1%	38.4%	3.2%	56.2%	281
Library holdings (quality and quantity)	10.4%	43.6%	2.1%	43.9%	280
Access to electronic library resources (databases, electronic journals, and electronic books)	3.6%	22.8%	2.5%	71.2%	281

<b>Please rate your level of awareness and satisfaction with the following Student Life Services:</b>					
	Did Not Know About	Knew About, But Did Not Use	Used and was Dissatisfied	Used and was Satisfied	Count
Residence hall food service	4.7%	39.7%	8.7%	46.9%	277
Residence hall facilities	4.3%	41.5%	10.5%	43.7%	277
Residence hall services and programs	5.4%	43.5%	9.4%	41.7%	276
Lafene Health Center	2.2%	26.4%	15.6%	55.8%	276
K-State Student Union food service	1.8%	25.6%	6.1%	66.4%	277
Union Program Council (UPC)	13.1%	47.1%	1.8%	38.0%	274
Greek experience (fraternity/sorority)	6.1%	75.5%	2.5%	15.9%	277
Recreation Services	2.9%	15.6%	2.2%	79.3%	276
University Life Cafe	45.8%	47.3%	0.7%	6.1%	277
Center for Child Development	30.1%	67.4%	0.7%	1.8%	276
Multicultural Student Organizations	29.3%	61.2%	0.7%	8.7%	276
Alcohol and other drug educational services	18.8%	57.2%	8.3%	15.6%	276
Healthy Decisions (assists students with identifying sources of support)	39.5%	55.4%	0.7%	4.3%	276

<b>Please rate your level of awareness and satisfaction with the following Student Academic Services:</b>					
	Did Not Know About	Knew About, But Did Not Use	Used and was Dissatisfied	Used and was Satisfied	Count
Recruitment materials and manner in which information was made available to you	21.0%	23.2%	3.3%	52.5%	276
Admissions services and online application	4.3%	11.6%	3.3%	80.8%	276
kSIS and its many applications	0.4%	2.6%	12.4%	84.7%	274
DARS (Degree Audit Registration System)	0.7%	3.6%	11.3%	84.4%	275
Scholarship House (Clovia, Smith, Smurthwaite)	19.2%	72.5%	1.4%	6.9%	276
Developing Scholars Program	52.4%	41.8%	0.7%	5.1%	275
McNair Scholars Program	56.8%	38.1%	0.4%	4.8%	273
Convocations/Lectures (e.g. Landon, Lou Douglas, Dorothy Thompson, departmental, etc.)	28.4%	41.8%	1.1%	28.7%	275
SALT ( <a href="http://www.saltmoney.org/k-state">www.saltmoney.org/k-state</a> ) - A free online financial tool provided by Powercat Financial Counseling.	21.9%	62.8%	2.9%	12.4%	274

<b>Please rate your level of awareness and satisfaction with the following additional service/areas:</b>					
	Did Not Know About	Knew About, But Did Not Use	Used and was Dissatisfied	Used and was Satisfied	Count
Parking availability	1.4%	10.5%	73.3%	14.8%	277
Parking facilities (maintenance, appearance, etc.)	1.8%	12.3%	39.5%	46.4%	276
Campus bookstore	0.4%	11.2%	20.6%	67.9%	277
Campus safety	2.5%	26.4%	5.8%	65.3%	277
McCain Performance Series	4.7%	43.0%	2.5%	49.8%	277
Collegian (campus newspaper)	2.2%	30.7%	12.6%	54.5%	277
Royal Purple Yearbook	8.7%	79.1%	3.2%	9.0%	277

**In your K-State experience, how often have you had discussions with people from the following groups?**

	Never	Sometimes	Often	Very Often	Count	Average Value
People with political opinions of than your own	8.3%	45.2%	30.3%	16.2%	290	2.5
People with religious beliefs other than your own	7.6%	44.1%	30.3%	17.9%	290	2.6
People from economic situations other than your own	3.8%	29.3%	46.6%	20.3%	290	2.8
People of races or ethnicities other than your own	4.5%	44.1%	34.8%	16.6%	290	2.6

**How often did your K-State courses include diverse perspectives (political views, religious beliefs, racial/ethnic backgrounds, gender identities, etc.) in activities, assignments, and discussions?**

	Percent	Count
Never	8.3%	24
Sometimes	61.0%	177
Often	26.9%	78
Very Often	3.8%	11

<b>What were your reasons for choosing the major? (Select all that apply)</b>		
	Count	Percent
Interesting subject	234	77.0%
Job Demand	127	41.8%
Meaningful contribution to society	125	41.1%
Influence of family	89	29.3%
Influence of friends	32	10.5%
Influence of professor	25	8.2%
Respected positions	70	23.0%
High salaries	49	16.1%
Challenge	57	18.8%
Enjoyed courses in the field	188	61.8%
Friends in major	41	13.5%

<b>What percentage of your courses at K-State did you complete through distance education (i.e. online, video conferencing, etc.)?</b>		
	Count	Percent
I did not complete any courses through distance education; all of my courses were completed on-campus	72	23.6%
25% or less	209	68.5%
26%-50%	11	3.6%
51%-75%	5	1.6%
76%-99%	1	0.3%
All of my courses were completed through distance education	7	2.3%
<b>Total</b>	<b>305</b>	<b>100.0%</b>

<b>During your time at K-State, how many of your courses included a service-learning component (such as a community or volunteer project)?</b>		
	Count	Percent
None	159	52.1%
Some	143	46.9%
Most	3	1.0%
All		
<b>Total</b>	<b>305</b>	<b>100.0%</b>

<b>During your years at Kansas State University, how many hours per week, on average, did you spend in the following activities?</b>					
	None	1-10	11-20	21-30	30+
Internship/Practicum	50.8%	21.7%	7.6%	2.8%	9.0%
On-campus employment	42.1%	19.1%	25.1%	9.7%	4.0%
Off-campus employment	36.1%	16.8%	22.3%	15.1%	9.6%
Volunteer (unpaid) activities	38.7%	49.3%	8.2%	1.7%	2.1%



<b>What is your general attitude toward Kansas State University?</b>		
	Count	Percent
Very Negative	2	0.7%
Negative	10	3.3%
Positive	129	42.3%
Very Positive	164	53.8%
Total	305	100.0%

<b>When you applied to K-State, either as a new freshmen or transfer student, it was your:</b>		
	Count	Percent
First Choice	269	88.2%
Second Choice	26	8.5%
Third Choice	7	2.3%
Last Choice	3	1.0%
Total	305	100.0%

<b>Would you recommend Kansas State University to others?</b>		
	Count	Percent
Definitely No	2	0.7%
Probably No	8	2.6%
Probably Yes	80	26.2%
Definitely Yes	215	70.5%
Total	305	100.0%

<b>Students in my major are:</b>					
	Strongly Disagree	Disagree	Agree	Strongly Agree	Count
Career oriented	0.7%	1.7%	49.2%	48.5%	303
Serious about their studies	1.3%	7.9%	66.3%	24.4%	303
Supportive and helpful to each other in meeting the academic demands of the program	0.0%	6.3%	50.2%	43.6%	303
Academically honest (do not cheat, plagiarize)	1.0%	5.6%	60.3%	33.1%	302
Interested in a broad range of ideas from many disciplines	2.0%	16.2%	53.5%	28.4%	303
Able to work well in groups	0.0%	5.9%	54.8%	39.3%	303
Competitive with each other	1.7%	15.8%	53.1%	29.4%	303

<b>Students in my major are encouraged to:</b>					
	Strongly Disagree	Disagree	Agree	Strongly Agree	Count
Become personally acquainted with the department's faculty	0.7%	5.9%	46.9%	46.5%	303
Participate in professional interest groups	1.0%	9.6%	58.1%	31.4%	303
Attend professional seminars and colloquia	1.3%	13.6%	54.6%	30.5%	302
Become familiar with current and emerging technology	1.7%	10.2%	48.5%	39.6%	303
Participate in research or creative projects with faculty or other students	1.7%	13.2%	55.4%	29.7%	303

**I found the major to be:**

	Strongly Disagree	Disagree	Agree	Strongly Agree	Count
Characterized by mutual respect between undergraduate majors and professors	1.0%	4.0%	51.5%	43.4%	297
Academically stimulating	0.7%	4.0%	49.2%	46.2%	301

**In my major:**

	Strongly Disagree	Disagree	Agree	Strongly Agree	Count
Faculty are accessible for out-of-class assistance	0.7%	1.7%	59.9%	37.7%	302
Faculty are effective teachers	0.7%	5.0%	62.1%	32.2%	301
Faculty are interested in the academic and professional development of students	0.7%	2.3%	56.7%	40.3%	300
Faculty introduced students to a broad range of ideas, perspectives, and worldviews	1.3%	8.3%	61.5%	28.9%	301
Faculty are interested in the personal development of students	1.7%	6.0%	59.3%	33.0%	300
Faculty listen and respond to undergraduates regarding student needs, concerns, and suggestions	1.3%	7.7%	59.7%	31.3%	300
Faculty/Advisor provided high-quality advising	4.3%	10.6%	44.5%	40.5%	301
Faculty/Advisor/Staff provided support in finding appropriate employment or pursuing graduate study	3.0%	13.0%	53.5%	30.4%	299

<b>Sense of belonging: (Rated on a scale 1 to 7, 1 being a sense of alienation and 7 a sense of belonging)</b>		
	Count	Average Value
Relationships with other students, student groups, and activities	291	5.5

<b>Relationships with faculty and staff: (Rated on a scale of 1 to 7, 1 being unsympathetic, remote, unhelpful, and 7 approachable, understandable, helpful)</b>		
	Count	Average Value
Relationships with faculty members	289	5.7
Relationships with academic advisor(s)	290	5.6
Relationships with Graduate Teaching Assistants (GTAs)	272	4.9

<b>How often did you interact with faculty outside of class time?</b>		
	Count	Percent
Never	8	2.6%
Rarely	62	20.5%
Occasionally	152	50.3%
Often	80	26.5%
Total	302	100.0%

<b>Did you participate in an undergraduate research experience of creative endeavor?</b>		
	Count	Percent
Yes	152	50.3%
No	150	49.7%
Total	302	100.0%

<b>How would you rate the contribution of your mentor research/creative experience?</b>		
	Count	Percent of those who participated in research
Inadequate	4	2.6%
Fair	39	25.8%
Good	62	41.1%
Excellent	46	30.5%
Total	151	100.0%

<b>To what extent did your research/creative experience contribute to your academic success?</b>		
	Count	Percent of those who participated in research
None	10	6.6%
Little	34	22.5%
Somewhat	69	45.7%
Very Much	38	25.2%
Total	151	100.0%

<b>Did your research/creative experience contribute to your career choice?</b>		
	Count	Percent of those who participated in research
No	58	38.4%
Somewhat	59	39.1%
Definitely	34	22.5%
Total	151	100.0%

<b>How many semesters were you involved in a research/creative endeavor?</b>		
	Count	Percent of those who participated in research
1-2	96	63.6%
3-4	26	17.2%
5-6	20	13.2%
7-8	5	3.3%
9 or more	4	2.6%
Total	151	100.0%

<b>What types of dissemination of your undergraduate research/creative endeavor did you successfully achieve? (select all that apply)</b>		
	Count	Percent of those who participated in research
University research seminar presentation/poster	28	19.9%
Class presentation	96	68.1%
Poster at a conference outside of campus	15	10.6%
Oral presentation at a conference outside of campus	21	14.9%
Public performance/exhibition on campus	24	17.0%
Public performance/exhibition outside of campus	22	15.6%
Peer reviewed publication	23	16.3%
Other:	14	9.9%

As a result of your experience at Kansas State University, how much progress do you feel you have made in each of the following K-State 8 areas?						
	None	Little	Some	A Lot	Count	Average Value
Developed interpretive skills and heightened sensitivity to literature and the performing and visual arts.	11.4%	32.4%	39.2%	17.1%	281	2.6
Developed academic research skills.	1.4%	7.1%	56.9%	42.7%	281	3.3
Developed the ability to make ethical and thoughtful decisions.	1.4%	5.4%	37.3%	46.8%	280	3.4
Explored alternative values, perspectives, and beliefs from around the world	2.5%	18.1%	41.2%	30.2%	281	3.1
Realized the need to understand the past and thoughtfully consider the future.	2.5%	10.3%	42.9%	34.0%	282	3.2
Developed an awareness of self and perspectives about U.S. society and how group affiliation affects perceptions and experiences.	4.6%	14.6%	47.1%	30.2%	281	3.1
Developed the ability to evaluate scientific and technological claims related to the natural and physical world.	0.7%	8.2%	45.1%	40.8%	282	3.3
Understand and analyze how individuals, groups and societies behave and influence on another and the natural environment.	2.8%	14.5%	41.2%	31.9%	282	3.1

<b>As a result of your experience at Kansas State University, how much progress do you feel you have made in each of the following Undergraduate Learning Outcomes?</b>						
	None	Little	Some	A Lot	Count	Average Value
Gained a broad general education about different fields of knowledge	0.7%	2.1%	42.1%	55.2%	290	3.5
Improved written communication skills	1.7%	9.1%	54.2%	35.0%	286	3.2
Improved oral communication skills	1.7%	7.7%	47.0%	43.6%	287	3.3
Improved graphic and technological communication skills	2.4%	21.5%	48.1%	28.0%	289	3
Improved ability to think critically (analytically and logically)	1.7%	2.4%	36.9%	59.0%	290	3.5
Developed own values and ethical standards	1.7%	7.2%	36.6%	54.5%	290	3.4
Understand the ethical standards of your discipline or profession	1.4%	2.8%	35.6%	60.2%	289	3.5
Ability to interact positively with people who are different from you	1.0%	5.9%	37.6%	55.5%	290	3.5
Understand your abilities, interests, and personality	0.7%	6.9%	36.9%	55.5%	290	3.5
Understand other people and their abilities, interests, and perspectives	0.7%	4.1%	49.3%	45.9%	290	3.4
Ability to participate as a team member	2.1%	6.2%	39.0%	52.8%	290	3.4
Developed good health habits and physical fitness	7.6%	26.6%	41.4%	24.5%	290	2.8

Universities differ from one another in the extent to which they emphasize various aspects of student development. Think of your experience at Kansas State University. To what extent was each of the following emphasized? (Rated on a scale of 1 to 7, 1 being a weak emphasis and 7 strong emphasis)

	Count	Average Value
The development of academic, scholarly, and intellectual qualities	268	5.7
The development of aesthetic, expressive, and creative qualities	256	4.7
Being critical, evaluative, and analytical	262	5.8
The development of vocational and occupational competence	259	5.4
The personal relevance and practical value of your courses	264	5.5

**What are your plans after graduation?**

	Count	%
Have a job that will continue after graduation	38	13.7%
Have a job lined up to begin after graduation	129	46.4%
Will begin to look for a job	35	12.6%
Pursue additional undergraduate education	4	1.4%
Will attend graduate school	54	19.4%
Volunteer service (Peace Corps, AmeriCorps, etc.)	1	0.4%
No plans for a job at this time	4	1.4%
Military	2	0.7%
Starting or raising a family	1	0.4%
Other	10	3.6%