

*\*Responses for this report only include seniors within the university, except where noted.*

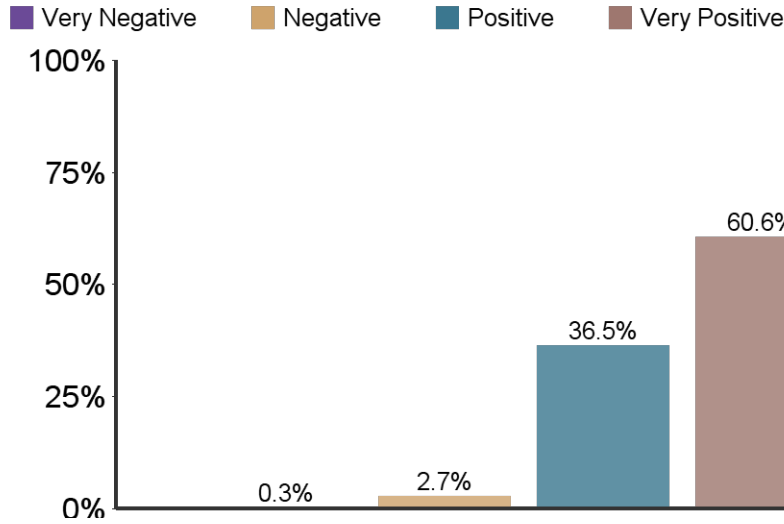
University	
Responses	2084
Initial Population	3699
Response Rate	56.3%

**Survey Information:**

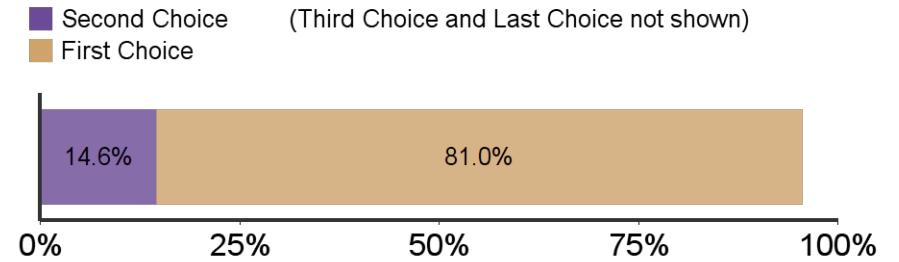
- The Senior Survey is designed to give undergraduate students the opportunity to reflect upon their K-State experiences. This information is used to improve the college experience for future students by identifying strengths in our programs as well as areas that need further development. The survey includes issues relating to satisfaction with K-State regarding academic programs, intellectual and personal growth, student services, and preparation for a career or a graduate/professional school.
- The survey is offered electronically (through Qualtrics) to seniors who have been cleared for graduation by their respective colleges

Table of Contents	
Introduction	1
Section I: Overall Satisfaction	2
Section IIa: 2025 Research, Scholarly, Creative Activities, and Discovery	3
Section IIb: 2025--Undergraduate Educational Experience	5
Section IIc: 2025--Faculty and Staff	8
Section III: Demographics	10
Section IV: K-State Office and Services	12
Section V: Results	15

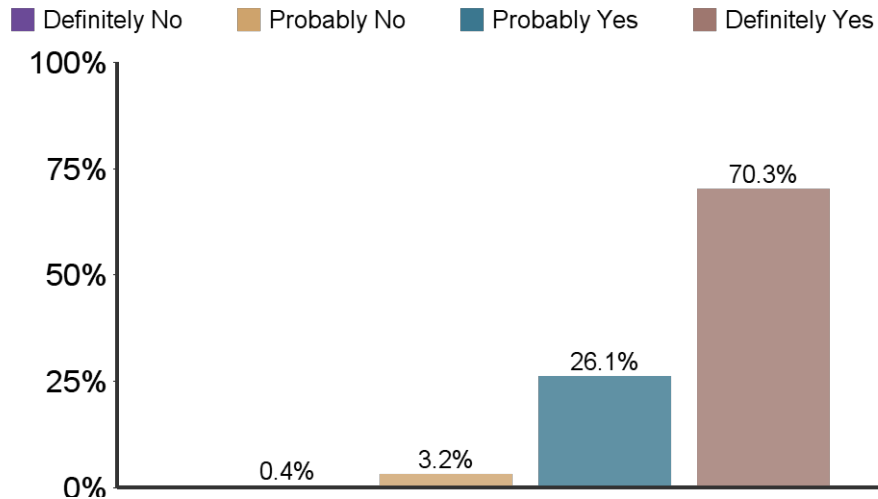
**What is your general attitude toward K-State?**



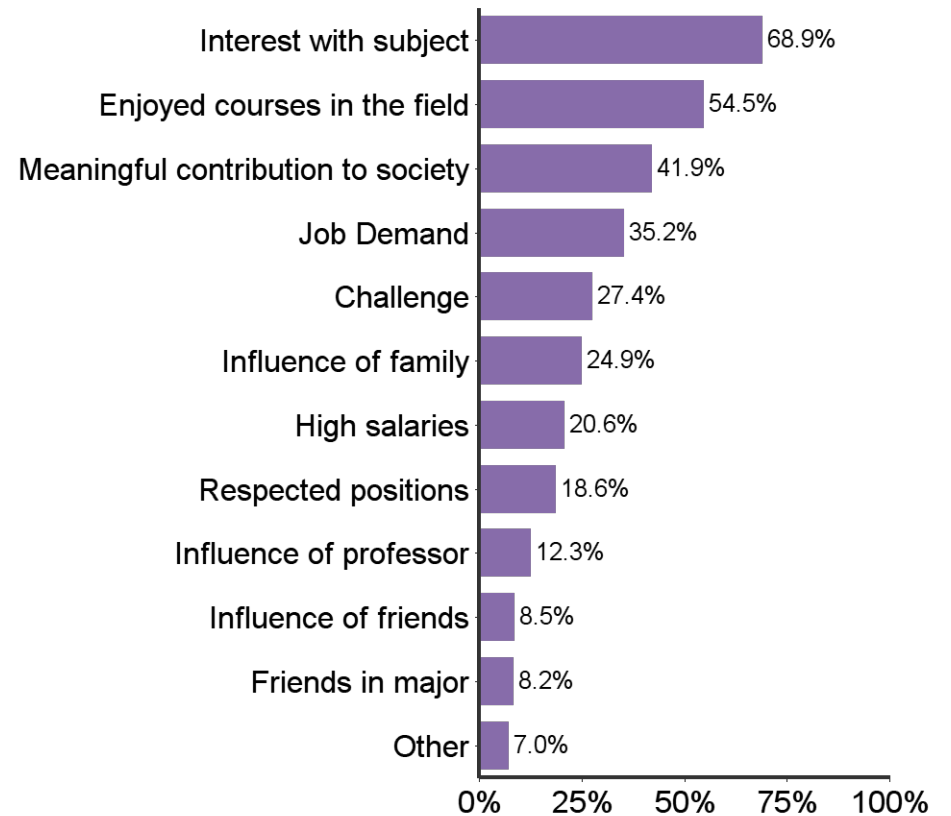
**When you applied to K-State, it was your:**



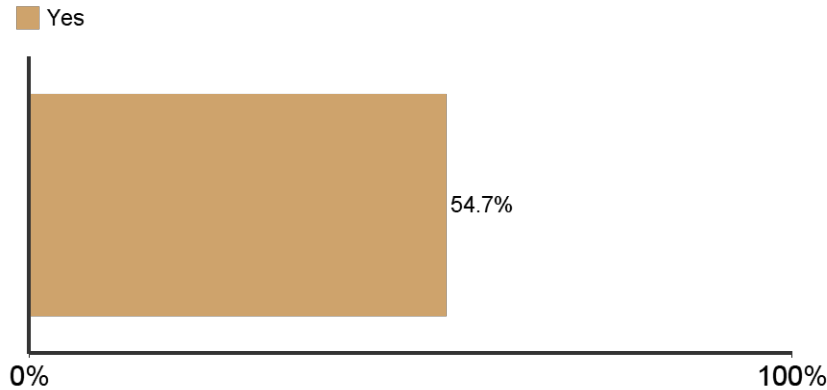
**Would you recommend K-State to others?**



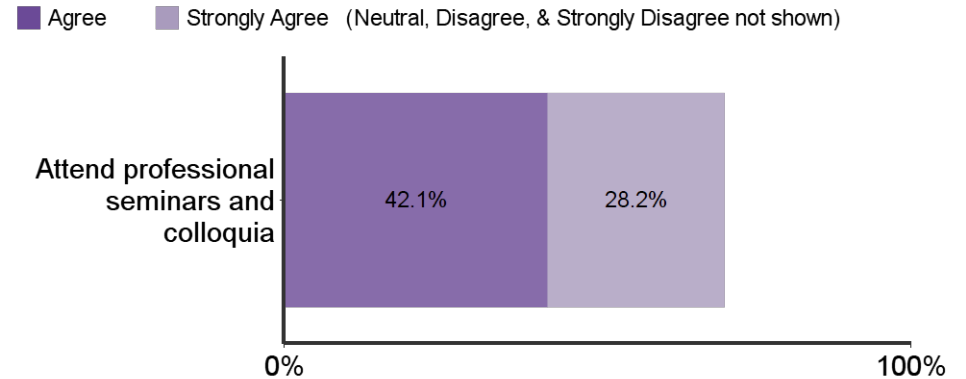
**Reasons for choosing major**



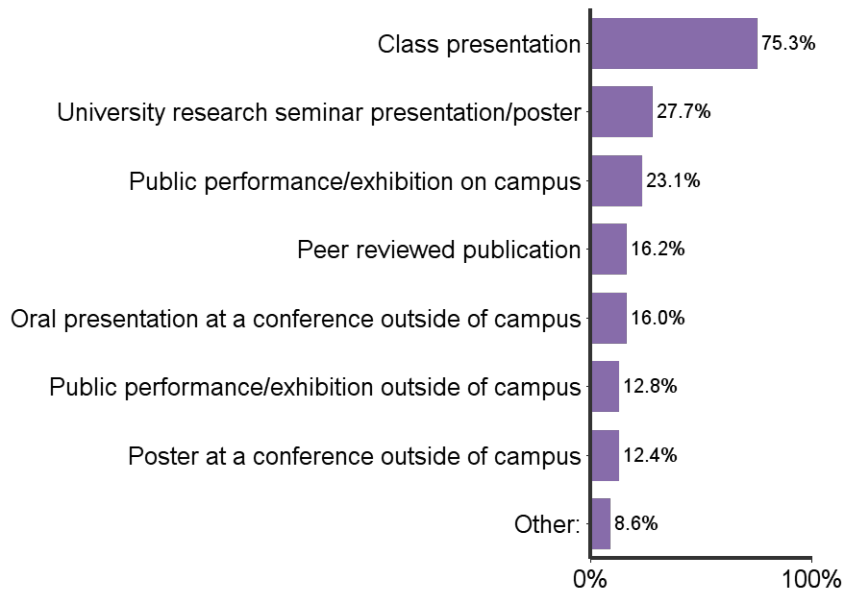
**Have you participated in undergraduate research?**



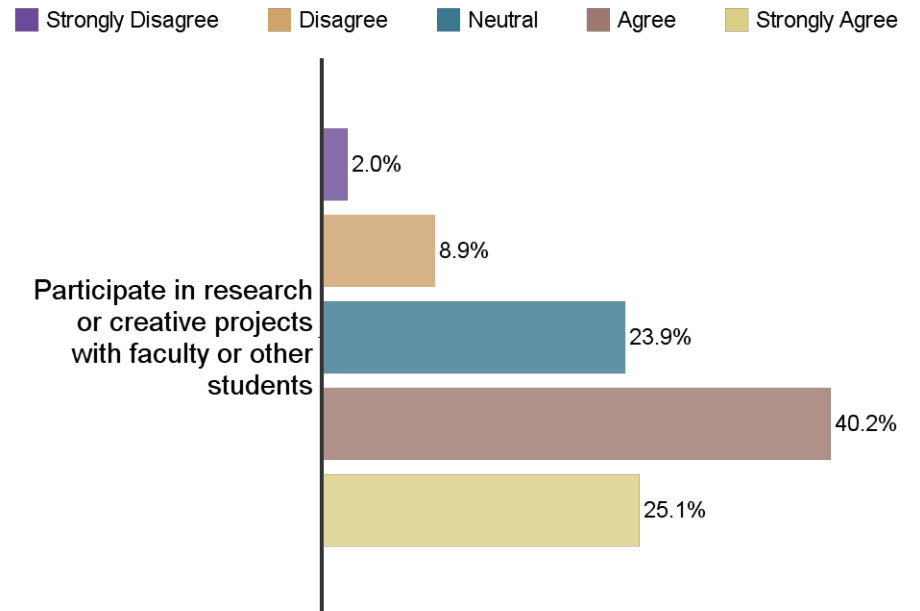
**Students in my major are encouraged to:**



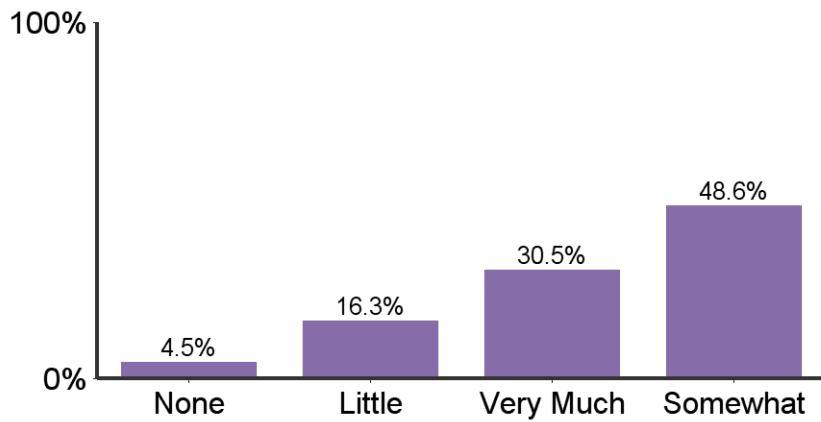
**What type(s) of research dissemination have you successfully achieved?**



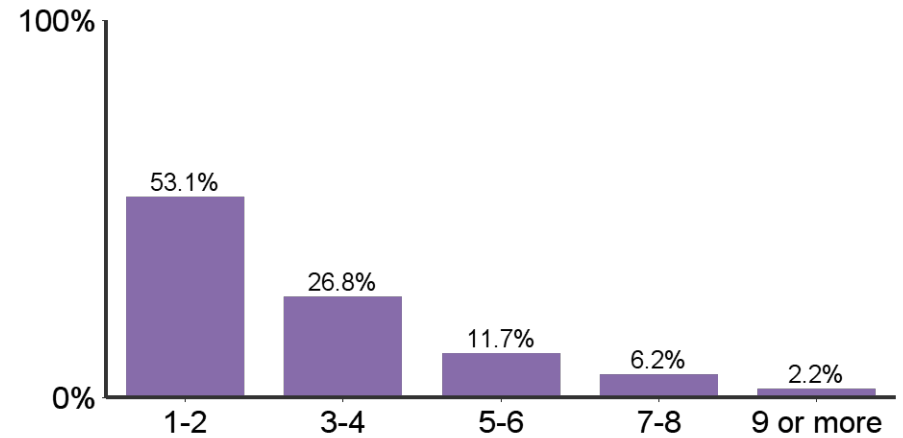
**Students in my major are encouraged to participate in research/creative projects:**



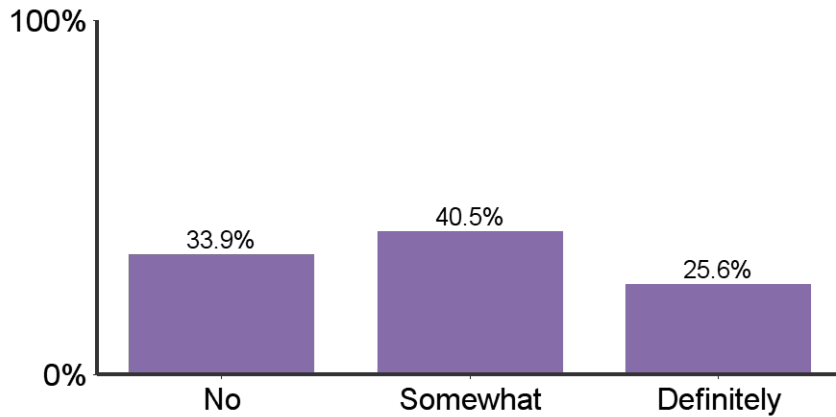
**To what extent did your research experience contribute to your academic success?**



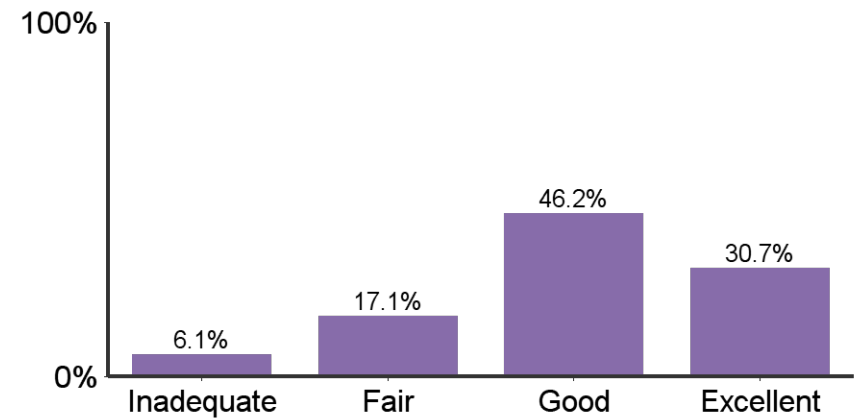
**Number of semesters involved in a research or creative endeavor:**



**Did your research experience contribute to your career choice?**

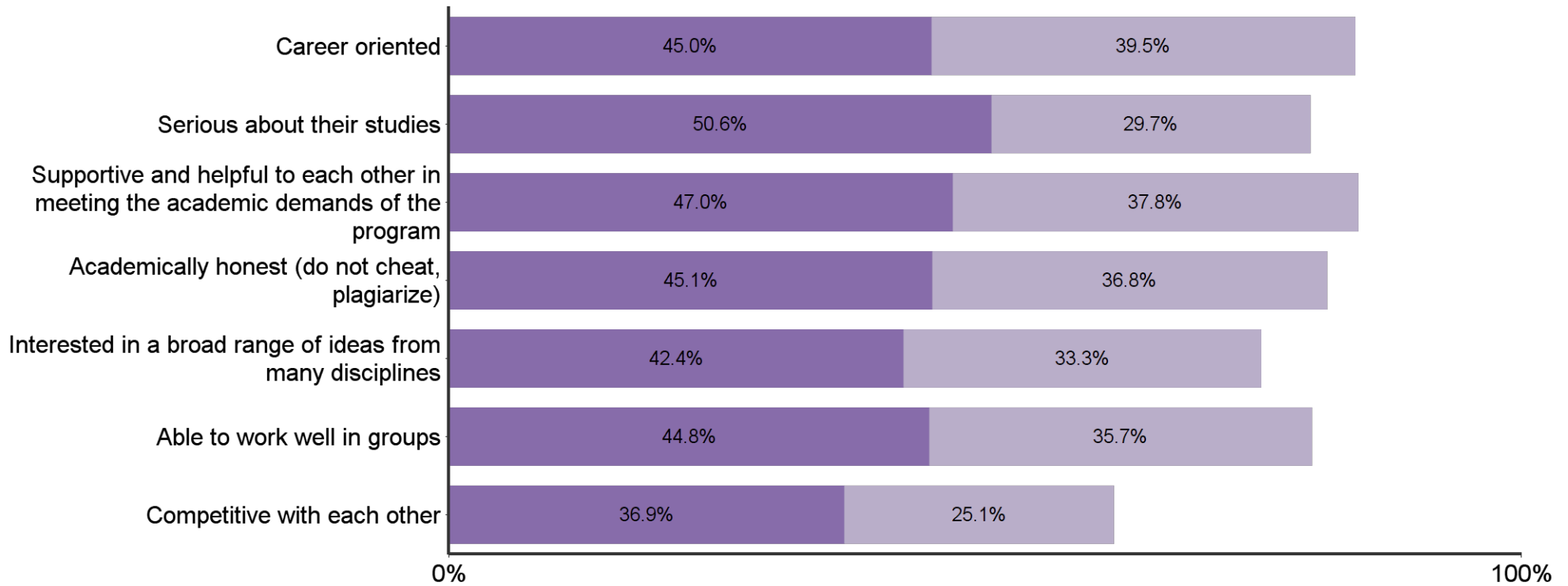


**How would you rate the contribution of your mentor to your research?**



**Students in my major are:**

■ Agree ■ Strongly Agree (Neutral, Disagree, & Strongly Disagree not shown)



**I found my major to be:**

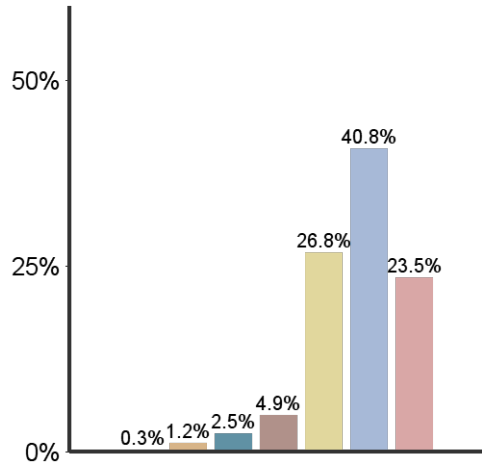
■ Agree ■ Strongly Agree (Neutral, Disagree, & Strongly Disagree not shown)



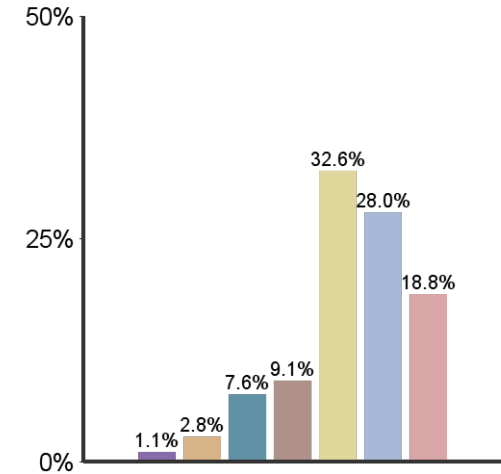
**Emphasis K-State placed on the following:**



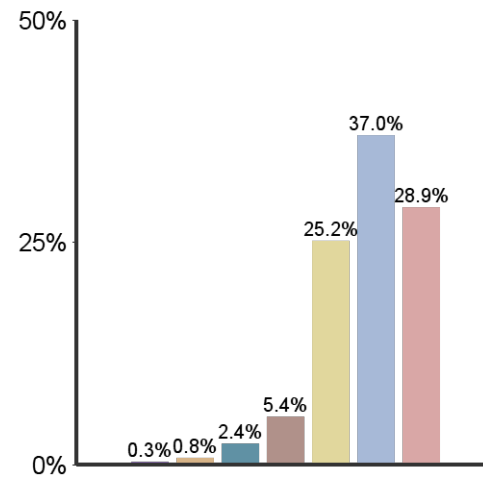
**Academic & Scholarly Qualities**



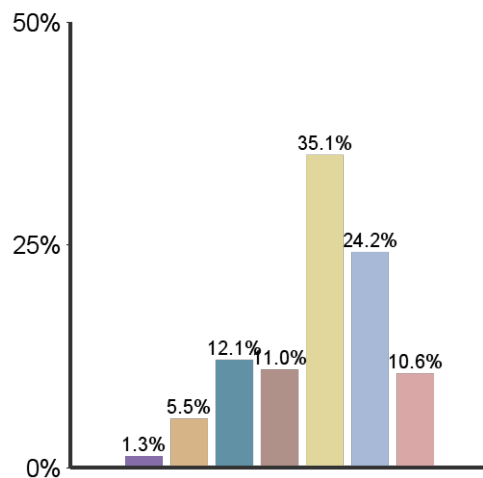
**Vocational and occupational competence**



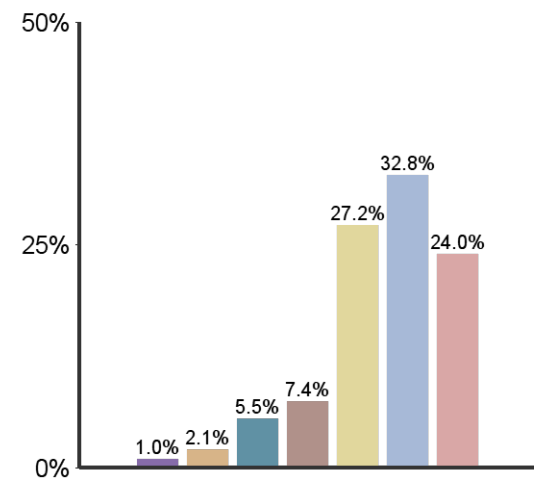
**Being critical, evaluative, and analytical**



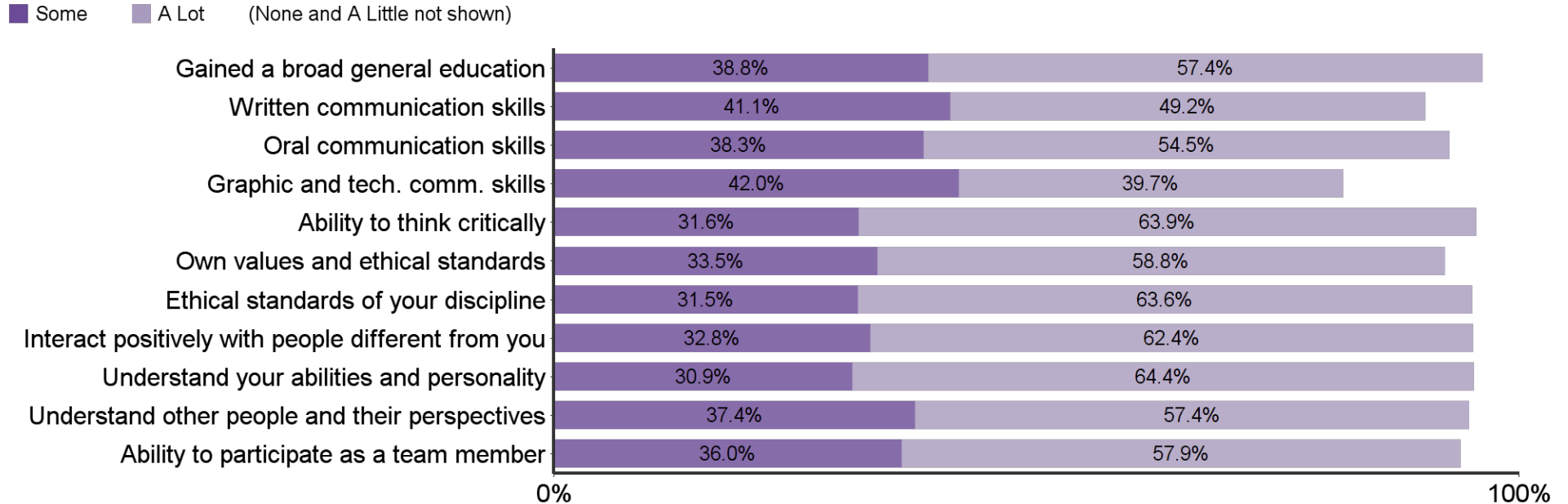
**Aesthetic, expressive, & creative qualities**



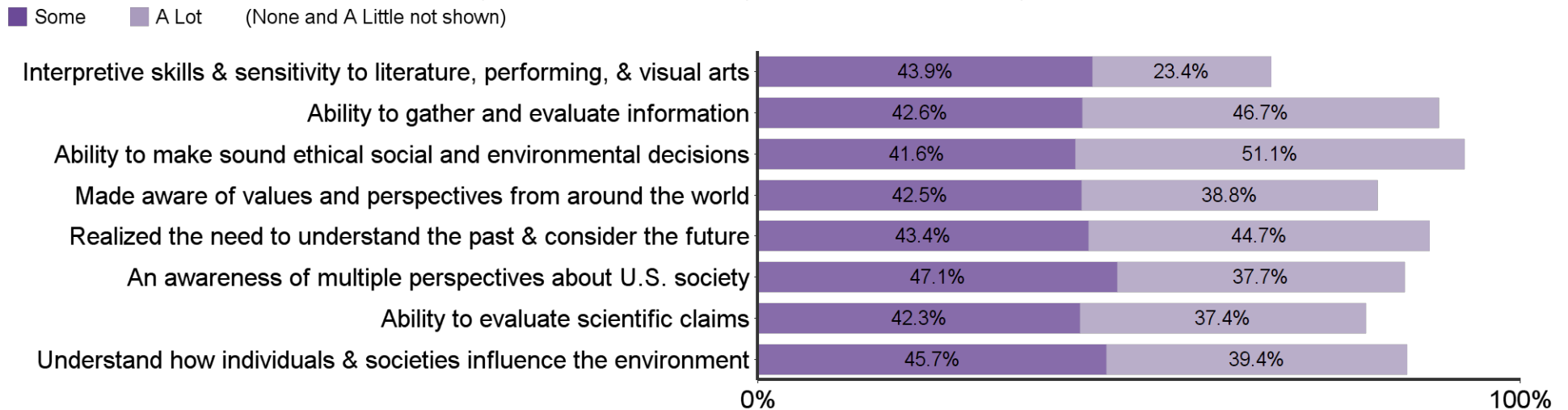
**Personal relevance & practical value**

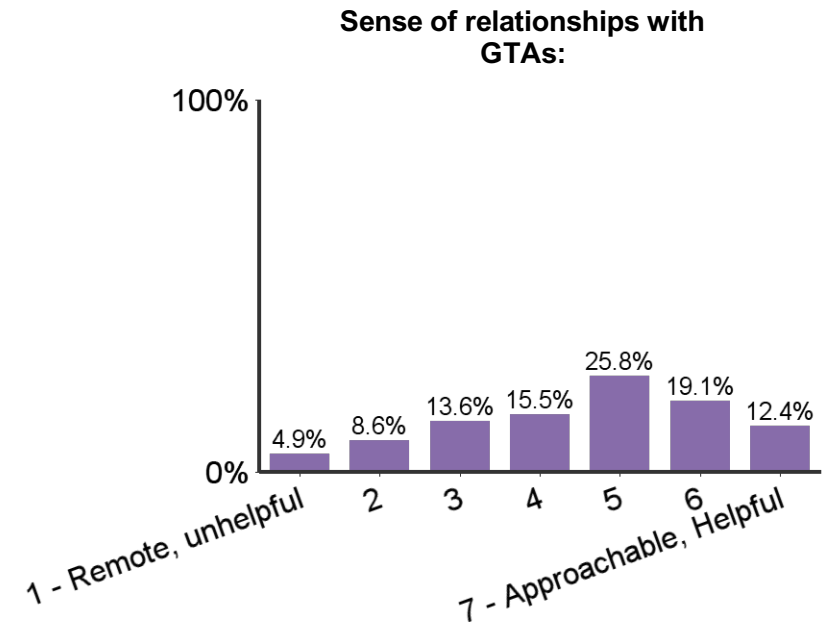
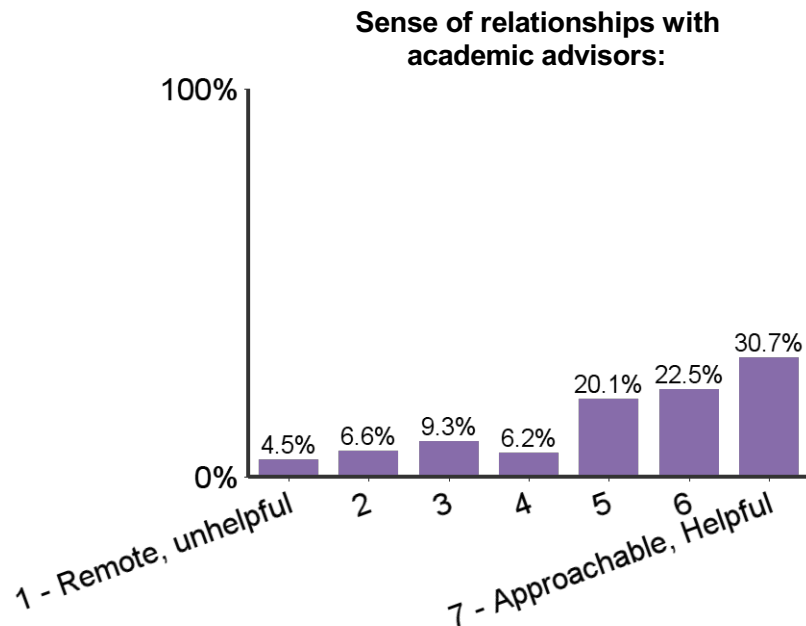
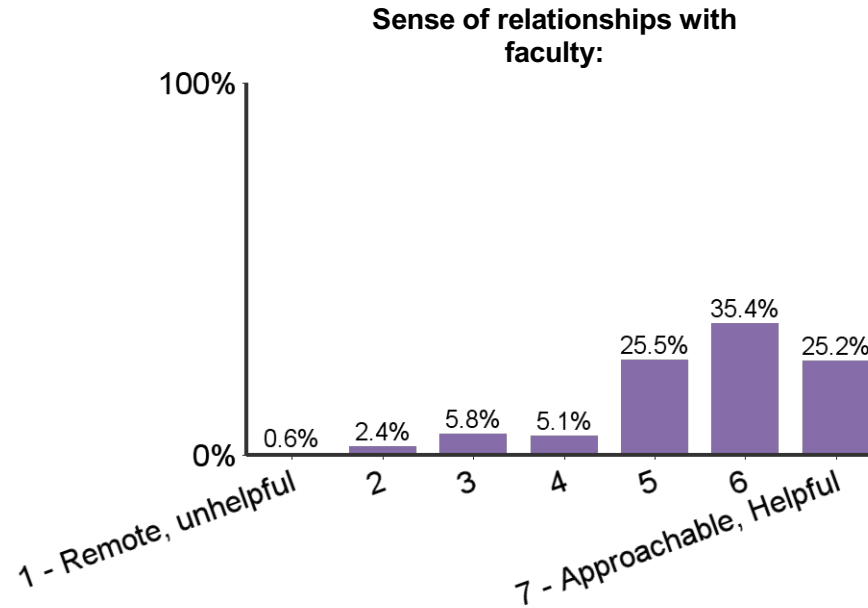


**Progress made in K-State undergraduate learning outcomes:**



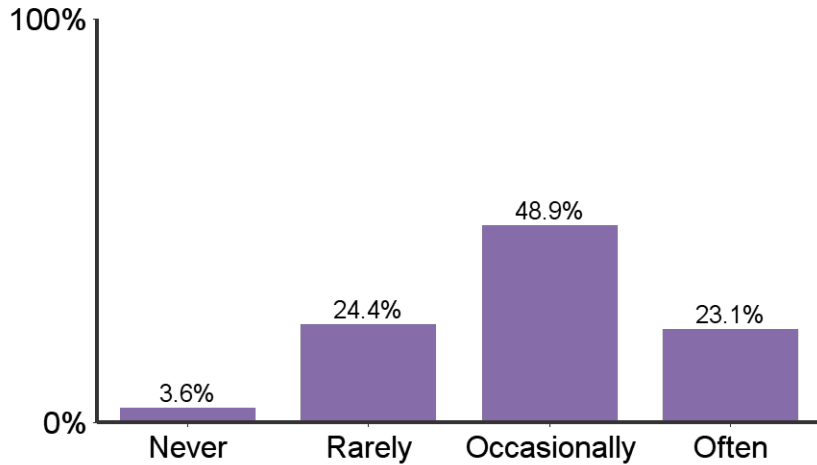
**Progress made in K-State 8 general education learning outcomes**



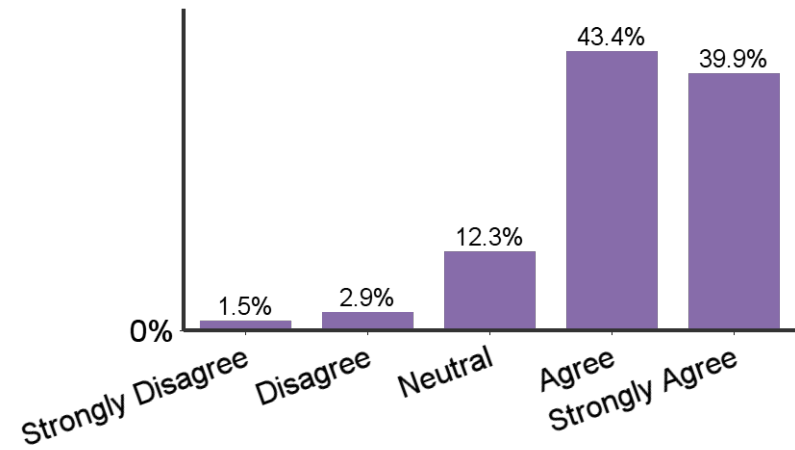




**How often did you interact with faculty outside of class time?**

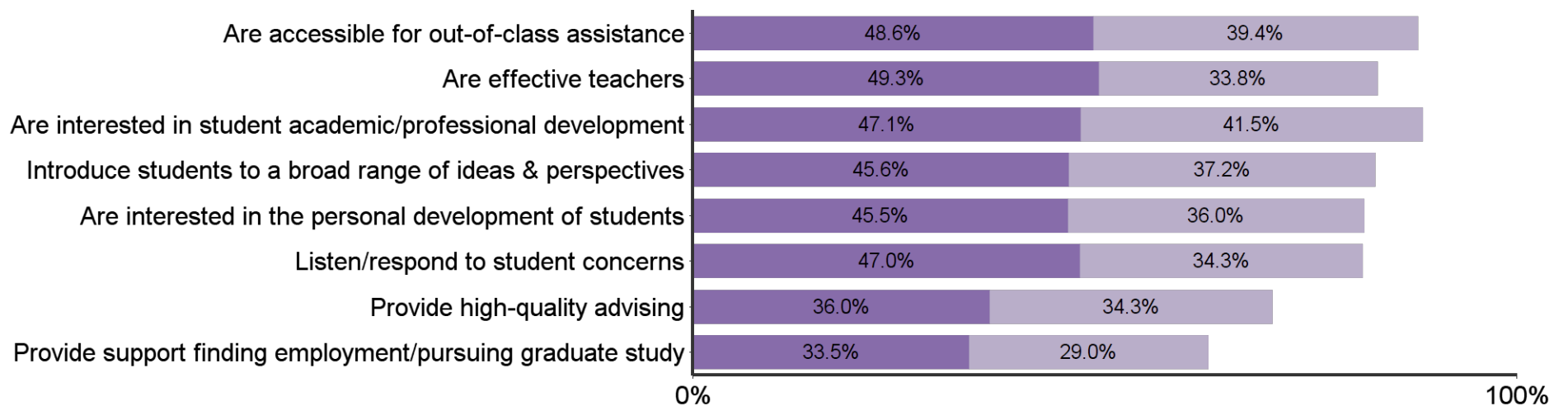


**I found my major to be characterized by mutual respect between undergraduates and professors**



**In my major, faculty:**

■ Agree ■ Strongly Agree (Strongly Disagree, Disagree, & Neutral not shown)

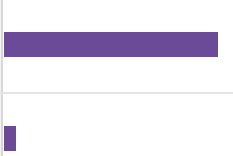


<b>Responses by College</b>			
	Bar	Percent	Count
Arts and Sciences		24.9%	519
Human Ecology		18.8%	391
Agriculture		18.3%	381
Business Administration		14.3%	298
Engineering		14.0%	291
Education		6.8%	141
Technology and Aviation		3.0%	63
Total	-	100.0%	2084

<b>Responses by Gender</b>			
	Bar	Percent	Count
Female		55.0%	1146
Male		45.0%	938

<b>Responses by Race/Ethnicity</b>			
	Bar	Percent	Count
WHITE		82.4%	1718
ASIAN		5.8%	120
HISPANIC		5.2%	109
BLACK		2.9%	60
MULTIRAC		2.2%	45
NOTSPEC		1.3%	28
AMERIND		0.1%	3
HAWPACI		0.0%	1

<b>Responses by Semester</b>			
	Bar	Percent	Count
Spring		70.5%	1469
Fall		26.9%	561
Summer		2.6%	54

<b>Responses by Citizenship Status</b>			
	Bar	Percent	Count
Citizen		94.3%	1966
Non-Citizen		5.7%	118

<b>Credit Hours Transferred to K-State</b>	
	Mean
Transfer Credit Hours	32

<b>K-State Undergraduate GPA of Respondents</b>	
	Mean
GPA	3.2

<b>Age of Respondents</b>	
	Mean
Age	23.5

Please rate your level of awareness and satisfaction with the following K-State offices

	Did Not Know About	Knew About, But Did Not Use	Used and was Dissatisfied	Used and was Satisfied	Count
Office of Student Financial Assistance	2.1%	39.5%	9.5%	48.9%	1745
Office of the Registrar	6.5%	31.0%	4.5%	58.0%	1735
Office of Non-Traditional and Veteran Student Services	33.4%	55.5%	1.7%	9.4%	1738
Office of Student Life	10.6%	62.7%	4.1%	22.6%	1740
Office of Diversity	30.1%	61.2%	2.2%	6.5%	1738
Office of Career and Employment Services	2.4%	32.2%	6.5%	59.0%	1733
Office of Student Activities & Services (activities carnival, SafeRide, student legal services, etc.)	9.8%	50.4%	2.8%	37.0%	1733
Office of Parking services	4.6%	24.8%	39.2%	31.4%	1738
Counseling Services	8.6%	68.4%	4.6%	18.4%	1730
Women's Center	24.6%	64.1%	2.0%	9.3%	1736
Student Access Center	33.0%	54.6%	2.0%	10.3%	1731
Academic and Career Information Center (assistance with exploring majors and matching your interests, abilities and values to possible occupations)	25.4%	50.0%	3.3%	21.3%	1737
Academic Assistance Center (PILOTS, study skills, testing services, University Experience, etc.)	31.8%	54.3%	2.2%	11.7%	1737
Educational Supportive Services (ESS) (TRiO, tutoring, writing and math assistance, etc.)	23.9%	50.3%	4.3%	21.6%	1739
Powercat Financial Counseling	14.9%	70.4%	2.5%	12.2%	1736

<b>Please rate your level of awareness and satisfaction with the following Library services</b>					
	Did Not Know About	Knew About, But Did Not Use	Used and was Dissatisfied	Used and was Satisfied	Count
Library facilities (atmosphere, available seating, hours)	0.9%	8.0%	5.6%	85.5%	1735
Library staff (assistance in research, effectively finding information, learning how to use the libraries)	1.3%	24.4%	2.5%	71.8%	1733
Library holdings (quality and quantity)	6.5%	36.1%	3.2%	54.2%	1732
Access to electronic library resources (databases, electronic journals, and electronic books)	1.6%	11.3%	4.5%	82.6%	1734

<b>Please rate your level of awareness and satisfaction with the following Student Life Services:</b>					
	Did Not Know About	Knew About, But Did Not Use	Used and was Dissatisfied	Used and was Satisfied	Count
Residence hall food service	3.2%	32.9%	7.8%	56.0%	1726
Residence hall facilities	3.8%	35.3%	8.7%	52.2%	1723
Residence hall services and programs	4.6%	41.8%	7.4%	46.1%	1722
Lafene Health Center	2.2%	22.1%	16.9%	58.7%	1726
K-State Student Union food service	2.4%	17.5%	6.9%	73.2%	1719
Union Program Council (UPC)	11.1%	42.0%	3.0%	44.0%	1721
Greek experience (fraternity/sorority)	5.8%	63.4%	5.3%	25.6%	1719
Recreation Services	3.2%	16.7%	3.0%	77.2%	1720
University Life Cafe	41.2%	46.9%	1.2%	10.7%	1719
Center for Child Development	26.8%	65.3%	1.2%	6.7%	1721
Multicultural Student Organizations	23.2%	64.9%	1.9%	10.1%	1719
Alcohol and other drug educational services	21.9%	57.1%	6.2%	14.8%	1722
Healthy Decisions (assists students with identifying sources of support)	38.7%	52.6%	1.2%	7.5%	1724

<b>Please rate your level of awareness and satisfaction with the following Student Academic Services:</b>					
	Did Not Know About	Knew About, But Did Not Use	Used and was Dissatisfied	Used and was Satisfied	Count
Recruitment materials and manner in which information was made available to you	20.4%	26.3%	3.6%	49.6%	1704
Admissions services and online application	6.0%	12.8%	4.0%	77.1%	1705
iSIS and its many applications	0.9%	2.5%	13.0%	83.5%	1709
DARS (Degree Audit Registration System)	2.0%	4.8%	12.7%	80.6%	1702
Scholarship House (Clovia, Smith, Smurthwaite)	21.6%	69.1%	2.0%	7.3%	1706
Developing Scholars Program	47.9%	44.7%	1.6%	5.9%	1706
McNair Scholars Program	53.2%	40.4%	1.4%	5.1%	1702
Convocations/Lectures (e.g. Landon, Lou Douglas, Dorothy Thompson, departmental, etc.)	27.9%	39.7%	1.4%	31.0%	1704
SALT ( <a href="http://www.saltmoney.org/k-state">www.saltmoney.org/k-state</a> ) - A free online financial tool provided by Powercat Financial Counseling.	35.5%	48.9%	2.9%	12.6%	1700

<b>Please rate your level of awareness and satisfaction with the following additional services/areas:</b>					
	Did Not Know About	Knew About, But Did Not Use	Used and was Dissatisfied	Used and was Satisfied	Count
Parking availability	1.7%	12.7%	69.3%	16.2%	1719
Parking Facilities (maintenance, appearance, etc.)	2.5%	13.7%	34.8%	49.0%	1719
Campus bookstore	1.2%	10.1%	21.4%	67.3%	1720
Campus safety	3.4%	27.0%	5.5%	64.1%	1714
McCain Performance Series	4.5%	39.1%	2.2%	54.2%	1715
Collegian (campus newspaper)	2.7%	28.6%	15.4%	53.2%	1716
Royal Purple Yearbook	7.6%	76.1%	4.1%	12.2%	1719

**In your K-State experience, how often have you had discussions with people from the following groups?**

	Never	Sometimes	Often	Very Often	Count	Average Value
People with political opinions of than your own	8.3%	42.3%	30.6%	18.8%	1842	2.6
People with religious beliefs other than your own	8.0%	38.9%	32.3%	20.8%	1842	2.7
People from economic situations other than your own	3.7%	29.6%	42.5%	24.1%	1843	2.9
People of races or ethnicities other than your own	4.2%	35.7%	35.7%	24.4%	1841	2.8

**How often did your K-State courses include diverse perspectives (political views, religious beliefs, racial/ethnic backgrounds, gender identities, etc.) in activities, assignments, and discussions?**

	Count	Percent
Never	165	8.9%
Sometimes	964	52.1%
Often	473	25.6%
Very Often	247	13.4%

**What were your reasons for choosing the major? (Select all that apply)**

	Count	Percent
Interesting subject	1338	67.4%
Job Demand	698	35.2%
Meaningful contribution to society	832	41.9%
Influence of family	495	24.9%
Influence of friends	168	8.5%
Influence of professor	244	12.3%
Respected positions	370	18.6%
Interest with subject	1366	68.9%
High salaries	408	20.6%
Challenge	544	27.4%
Enjoyed courses in the field	1082	54.5%
Friends in major	163	8.2%
Other	138	7.0%

**What percentage of your courses at K-State did you complete through distance education (i.e. online, video conferencing, etc.)?**

	Count	Percent
None	837	42.2%
Some	1082	54.5%
Most	59	3.0%
All	6	0.3%
Total	1984	100.0%

**During your time at K-State, how many of your courses included a service-learning component (such as a community or volunteer project)?**

	Count	Percent
None	837	42.2%
Some	1082	54.5%
Most	59	3.0%
All	6	0.3%
Total	1984	100.0%

**During your years at Kansas State University, how many hours per week, on average, did you spend in the following activities?**

	None	1-5	6-10	11-15	16-20	21-30	30+
Internship/Practicum	54.1%	14.9%	8.1%	5.4%	4.7%	3.8%	9.0%
On-campus employment	49.4%	8.9%	10.2%	11.5%	10.0%	7.0%	3.0%
Off-campus employment	37.5%	8.2%	9.8%	10.5%	13.0%	10.8%	10.2%
Volunteer (unpaid) activities	31.6%	42.7%	12.2%	5.9%	3.6%	1.9%	2.1%



<b>What is your general attitude toward Kansas State University?</b>		
	Count	Percent
Very Negative	6	0.3%
Negative	53	2.7%
Positive	722	36.5%
Very Positive	1199	60.6%
Total	1980	100.0%

<b>When you applied to K-State, either as a new freshmen or transfer student, it was your:</b>		
	Count	Percent
First Choice	1603	81.0%
Second Choice	290	14.6%
Third Choice	56	2.8%
Last Choice	31	1.6%
Total	1980	100.0%

<b>Would you recommend Kansas State University to others?</b>		
	Count	Percent
Definitely No	8	0.4%
Probably No	63	3.2%
Probably Yes	517	26.1%
Definitely Yes	1392	70.3%
Total	1980	100.0%

**Students in my major are:**

	Strongly Disagree	Disagree	Neutral	Agree	Strongly Agree	Count	Average Value
Career oriented	0.7%	2.9%	12.0%	45.0%	39.5%	1922	4.2
Serious about their studies	0.8%	2.8%	16.1%	50.6%	29.7%	1919	4.1
Supportive and helpful to each other in meeting the academic demands of the program	0.4%	2.8%	12.0%	47.0%	37.8%	1918	4.2
Academically honest (do not cheat, plagiarize)	0.5%	3.1%	14.5%	45.1%	36.8%	1921	4.1
Interested in a broad range of ideas from many disciplines	0.8%	5.1%	18.4%	42.4%	33.3%	1921	4
Able to work well in groups	0.9%	3.4%	15.1%	44.8%	35.7%	1921	4.1
Competitive with each other	1.5%	9.5%	27.0%	36.9%	25.1%	1917	3.7

**Students in my major are encouraged to:**

	Strongly Disagree	Disagree	Neutral	Agree	Strongly Agree	Count	Average Value
Become personally acquainted with the department's faculty	1.4%	5.9%	16.6%	41.3%	34.8%	1924	4
Participate in professional interest groups	1.0%	7.6%	20.9%	42.9%	27.5%	1922	3.9
Attend professional seminars and colloquia	1.4%	7.8%	20.5%	42.1%	28.2%	1918	3.9
Become familiar with current and emerging technology	2.1%	7.8%	22.4%	39.1%	28.6%	1921	3.8
Participate in research or creative projects with faculty or other students	2.0%	8.9%	23.9%	40.2%	25.1%	1919	3.8

<b>My major is:</b>							
	Strongly Disagree	Disagree	Neutral	Agree	Strongly Agree	Count	Average Value
Characterized by mutual respect between undergraduate majors and professors	1.5%	2.9%	12.3%	43.4%	39.9%	1912	4.2
Academically stimulating	0.9%	2.3%	9.1%	45.7%	42.0%	1906	4.3

<b>In my major:</b>							
	Strongly Disagree	Disagree	Neutral	Agree	Strongly Agree	Count	Average Value
Faculty are accessible for out-of-class assistance	0.3%	2.3%	9.5%	48.6%	39.4%	1877	4.2
Faculty are effective teachers	0.8%	3.0%	13.1%	49.3%	33.8%	1875	4.1
Faculty are interested in the academic and professional development of students	0.9%	2.0%	8.5%	47.1%	41.5%	1875	4.3
Faculty introduced students to a broad range of ideas, perspectives, and worldviews	0.7%	3.7%	12.8%	45.6%	37.2%	1876	4.1
Faculty are interested in the personal development of students	1.1%	4.3%	13.2%	45.5%	36.0%	1874	4.1
Faculty listen and respond to undergraduates regarding student needs, concerns, and suggestions	1.0%	4.5%	13.2%	47.0%	34.3%	1875	4.1
Faculty/Advisor provided high-quality advising	4.8%	8.8%	16.1%	36.0%	34.3%	1874	3.9
Faculty/Advisor/Staff provided support in finding appropriate employment or pursuing graduate study	4.1%	10.4%	22.9%	33.5%	29.0%	1871	3.7

<b>Sense of belonging: (Rated on a scale 1 to 7, 1 being a sense of alienation and 7 a sense of belonging)</b>		
	Count	Average Value
Relationships with other students, student groups, and activities	1806	5.4

<b>Relationships with faculty and staff:</b>									
	1 - Unsympathetic, Remote, Unhelpful	2	3	4	5	6	7 - Approachable, Understandable, Helpful	Count	Average Value
Relationships with faculty members	0.6%	2.4%	5.8%	5.1%	25.5%	35.4%	25.2%	1752	5.6
Relationships with academic advisor(s)	4.5%	6.6%	9.3%	6.2%	20.1%	22.5%	30.7%	1734	5.2
Relationships with Graduate Teaching Assistants (GTAs)	4.9%	8.6%	13.6%	15.5%	25.8%	19.1%	12.4%	1517	4.6

<b>How often did you interact with faculty outside of class time?</b>		
	Count	Percent
Never	68	3.6%
Rarely	459	24.4%
Occasionally	921	48.9%
Often	436	23.1%
Total	1884	100.0%

**Did you participate in an undergraduate research experience of creative endeavor?**

	Count	Percent
Yes	1032	54.7%
No	853	45.3%
Total	1885	100.0%

**How would you rate the contribution of your mentor research/creative experience?**

	Count	Percent of those who participated in research
Inadequate	60	6.1%
Fair	169	17.1%
Good	457	46.2%
Excellent	304	30.7%
Total	990	100.0%

**To what extent did your research/creative experience contribute to your academic success?**

	Count	Percent of those who participated in research
None	45	4.5%
Little	162	16.3%
Somewhat	483	48.6%
Very Much	303	30.5%
Total	993	100.0%

**Did your research/creative experience contribute to your career choice?**

	Count	Percent of those who participated in research
No	338	33.9%
Somewhat	404	40.5%
Definitely	255	25.6%
Total	997	100.0%

**How many semesters were you involved in a research/creative endeavor?**

	Count	Percent of those who participated in research
1-2	527	53.1%
3-4	266	26.8%
5-6	116	11.7%
7-8	62	6.2%
9 or more	22	2.2%
Total	993	100.0%

**What types of dissemination of your undergraduate research/creative endeavor did you successfully achieve? (select all that apply)**

	Count	Percent of those who participated in research
University research seminar presentation/poster	263	27.7%
Class presentation	715	75.3%
Poster at a conference outside of campus	118	12.4%
Oral presentation at a conference outside of campus	152	16.0%
Public performance/exhibition on campus	219	23.1%
Public performance/exhibition outside of campus	122	12.8%
Peer reviewed publication	154	16.2%
Other:	82	8.6%

As a result of your experience at Kansas State University, how much progress do you feel you have made in each of the following K-State 8 areas?						
	None	Little	Some	A Lot	Count	Average Value
Developed interpretive skills and heightened sensitivity to literature and the performing and visual arts.	8.4%	24.3%	43.9%	23.4%	1783	2.8
Developed academic research skills.	1.7%	8.9%	42.6%	46.7%	1782	3.3
Developed the ability to make ethical and thoughtful decisions.	1.4%	5.9%	41.6%	51.1%	1782	3.4
Explored alternative values, perspectives, and beliefs from around the world	2.7%	16.0%	42.5%	38.8%	1777	3.2
Realized the need to understand the past and thoughtfully consider the future.	1.7%	10.1%	43.4%	44.7%	1776	3.3
Developed an awareness of self and perspectives about U.S. society and how group affiliation affects perceptions and experiences.	2.4%	12.8%	47.1%	37.7%	1783	3.2
Developed the ability to evaluate scientific and technological claims related to the natural and physical world.	2.5%	17.8%	42.3%	37.4%	1782	3.1
Understand and analyze how individuals, groups and societies behave and influence on another and the natural environment.	2.2%	12.7%	45.7%	39.4%	1778	3.2

<b>As a result of your experience at Kansas State University, how much progress do you feel you have made in each of the following Undergraduate Learning Outcomes?</b>						
	None	Little	Some	A Lot	Count	Average Value
Gained a broad general education about different fields of knowledge	0.5%	3.3%	38.8%	57.4%	1842	3.5
Improved written communication skills	1.0%	8.7%	41.1%	49.2%	1843	3.4
Improved oral communication skills	0.8%	6.5%	38.3%	54.5%	1836	3.5
Improved graphic and technological communication skills	2.8%	15.4%	42.0%	39.7%	1842	3.2
Improved ability to think critically (analytically and logically)	0.5%	4.0%	31.6%	63.9%	1846	3.6
Developed own values and ethical standards	1.7%	6.0%	33.5%	58.8%	1845	3.5
Understand the ethical standards of your discipline or profession	0.9%	4.0%	31.5%	63.6%	1844	3.6
Ability to interact positively with people who are different from you	0.7%	4.1%	32.8%	62.4%	1845	3.6
Understand your abilities, interests, and personality	0.8%	3.8%	30.9%	64.4%	1845	3.6
Understand other people and their abilities, interests, and perspectives	0.7%	4.6%	37.4%	57.4%	1844	3.5
Ability to participate as a team member	1.0%	5.1%	36.0%	57.9%	1837	3.5
Developed good health habits and physical fitness	9.6%	22.3%	35.9%	32.3%	1841	2.9

**Universities differ from one another in the extent to which they emphasize various aspects of student development. Think of your experience at Kansas State University. To what extent was each of the following emphasized?**

	1 - Weak Emphasis	2	3	4	5	6	7 - Strong Emphasis	Count	Average Value
The development of academic, scholarly, and intellectual qualities	0.3%	1.2%	2.5%	4.9%	26.8%	40.8%	23.5%	1687	5.7
The development of aesthetic, expressive, and creative qualities	1.3%	5.5%	12.1%	11.0%	35.1%	24.2%	10.6%	1625	4.9
Being critical, evaluative, and analytical	0.3%	0.8%	2.4%	5.4%	25.2%	37.0%	28.9%	1691	5.8
The development of vocational and occupational competence	1.1%	2.8%	7.6%	9.1%	32.6%	28.0%	18.8%	1630	5.3
The personal relevance and practical value of your courses	1.0%	2.1%	5.5%	7.4%	27.2%	32.8%	24.0%	1631	5.5

**What are your plans after graduation?**

	Count	Percent
Have a job that will continue after graduation	181	10.0%
Have a job lined up to begin after graduation	681	37.7%
Will begin to look for a job	410	22.7%
Pursue additional undergraduate education	35	1.9%
Will attend graduate school	384	21.3%
Volunteer service (Peace Corps, Americorp, etc.)	12	0.7%
No plans for a job at this time	14	0.8%
Military	22	1.2%
Starting or raising a family	17	0.9%
Other	48	2.7%