

**Responses for this report only include seniors within the college, except where noted.*

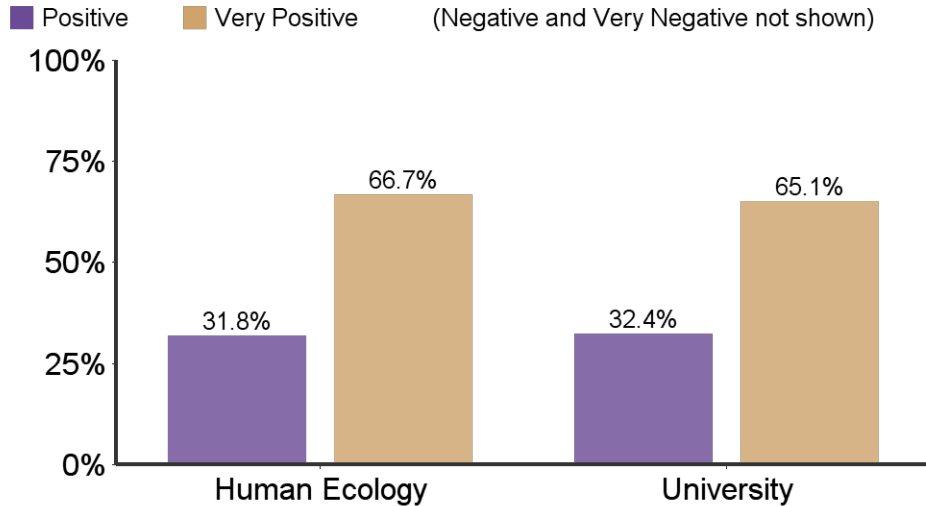
	Human Ecology	University
Responses	363	2022
Initial Population	620	3643
Response Rate	58.5%	55.5%

Survey Information:

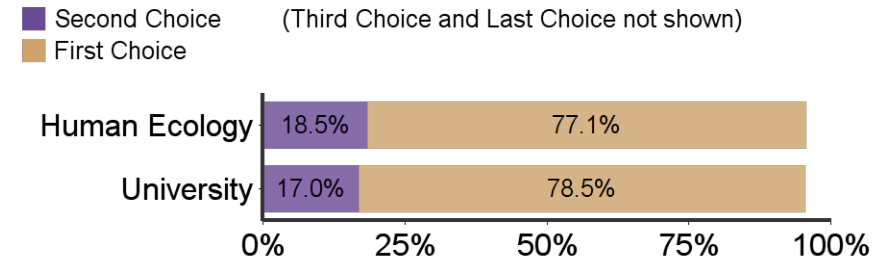
- The Senior Survey is designed to give undergraduate students the opportunity to reflect upon their K-State experiences. This information is used to improve the college experience for future students by identifying strengths in our programs as well as areas that need further development. The survey includes issues relating to satisfaction with K-State regarding academic programs, intellectual and personal growth, student services, and preparation for a career or a graduate/professional school.
- The survey is offered electronically (through Qualtrics) to seniors who have been cleared for graduation by their respective colleges.
- The 2013-14 was administered to 3643 seniors expected to graduate in summer 2013, fall 2013, and spring 2014. It was offered to summer and fall graduates 12/2/13 to 1/15/14 and to spring graduates 4/28/14 to 6/6/14.

Table of Contents	
Introduction	1
Section I: Overall Satisfaction	2
Section II: Future Plans	3
Section IIIa: 2025--Undergraduate Educational Experience	4
Section IIIb: 2025--Research, Scholarly, Creative Activity Discovery	6
Section IIIc: 2025--Faculty and Staff	9
Section IV: Demographics	11
Section V: Results Tables	13

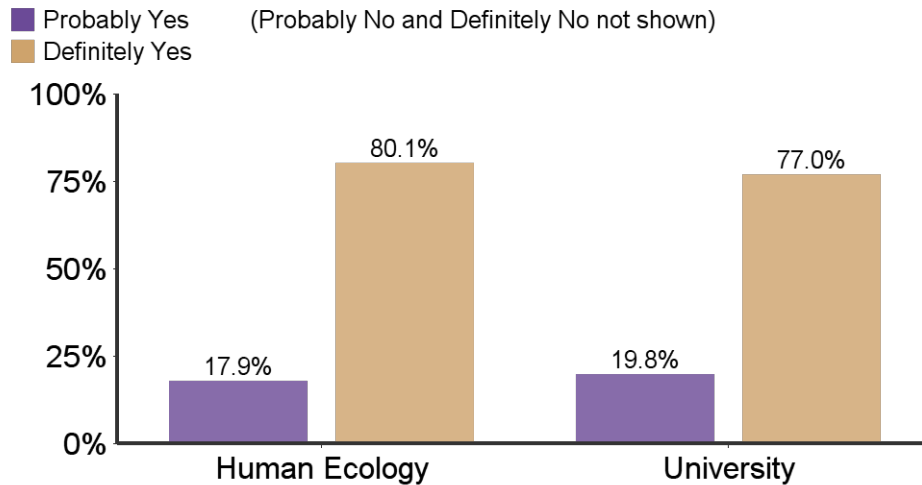
What is your general attitude toward K-State?



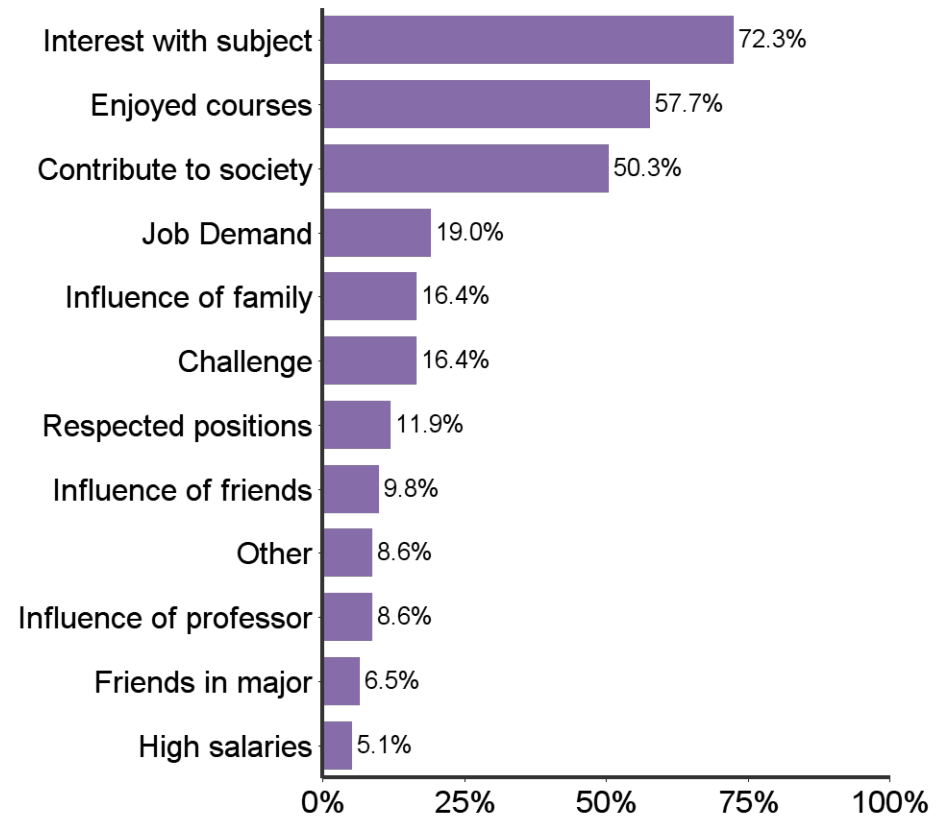
When you applied to K-State, it was your:



Would you recommend K-State to others?

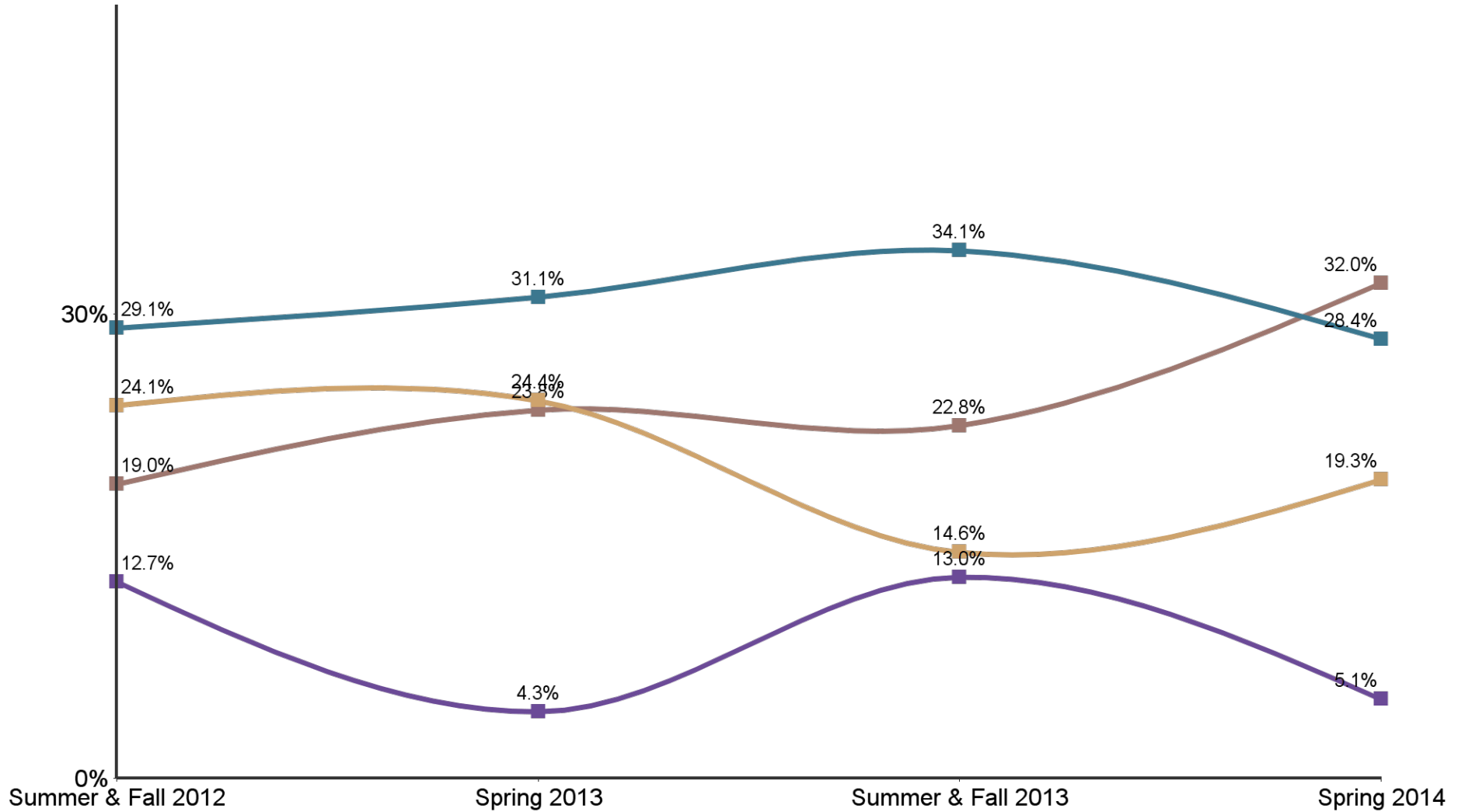


Reasons for choosing major

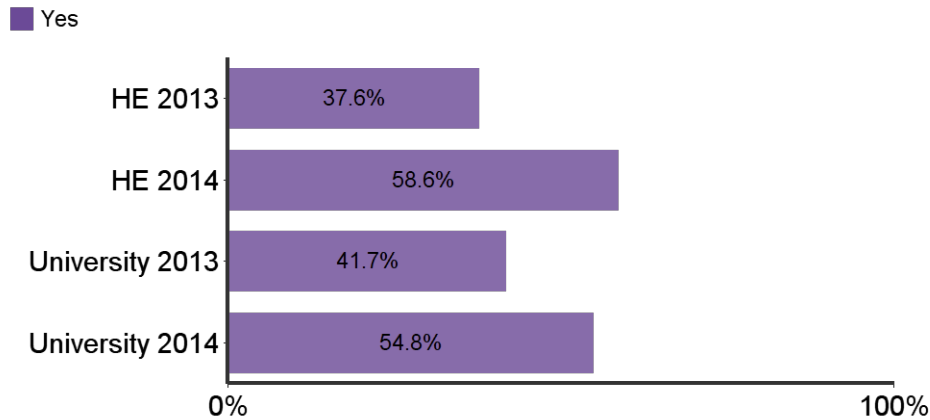


**What are your plans after graduation?
(selected results by semester)**

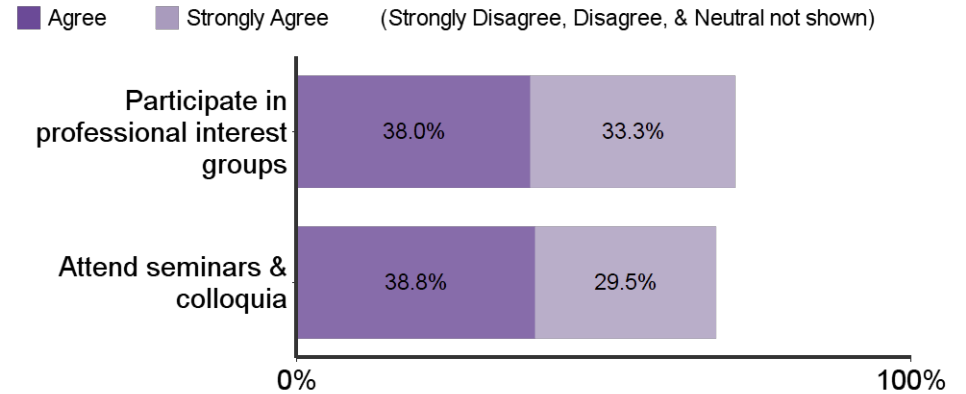
■ Have a job that will continue after graduation
 ■ Have a job lined up to begin after graduation
 ■ Will begin to look for a job
 ■ Will attend graduate school



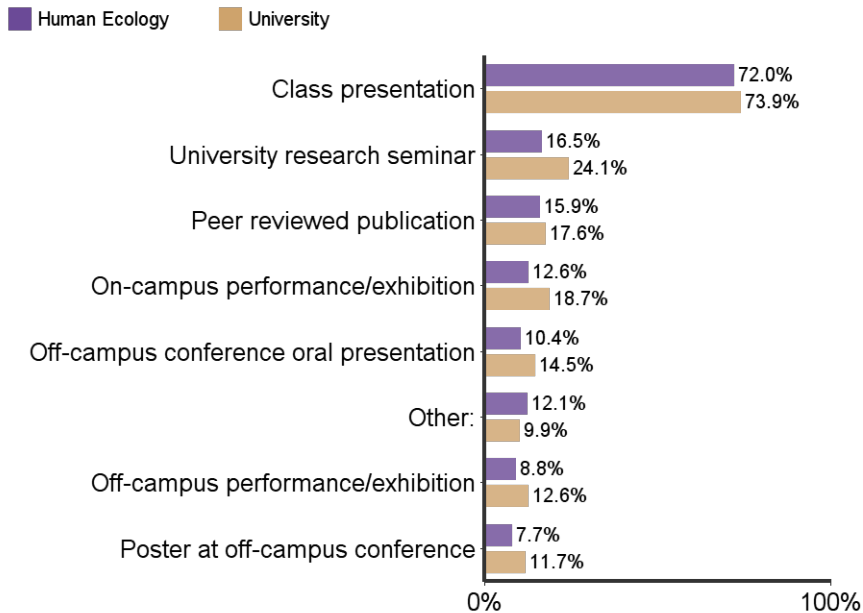
Have you participated in undergraduate research?



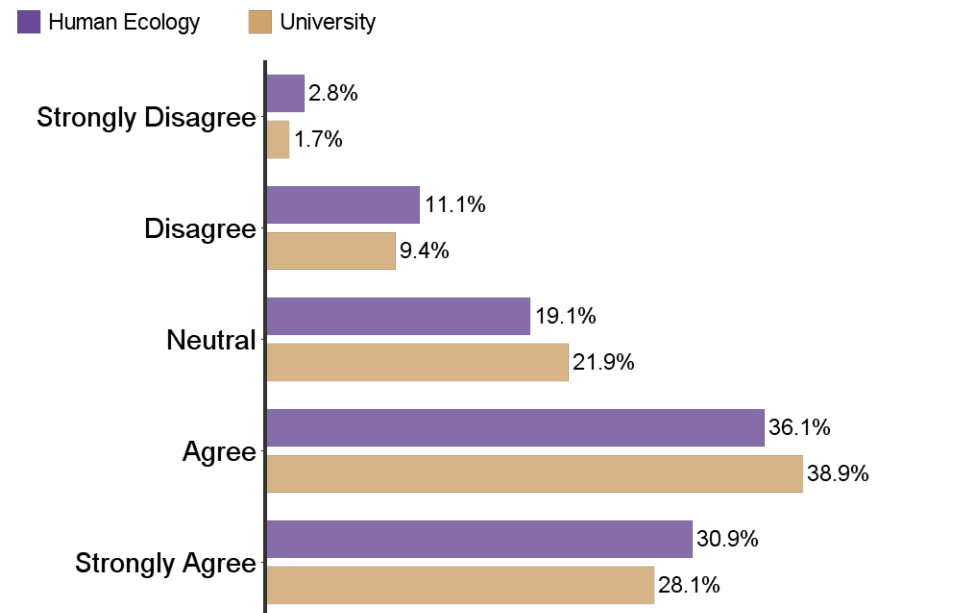
Students in my major are encouraged to:



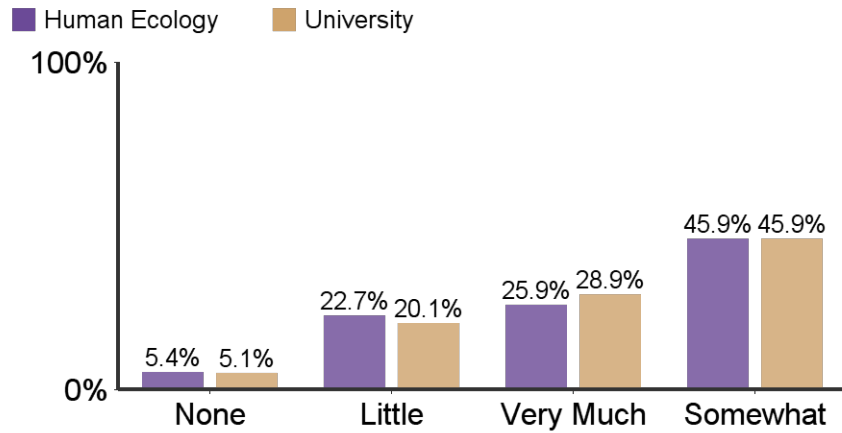
What type(s) of research dissemination have you successfully achieved?



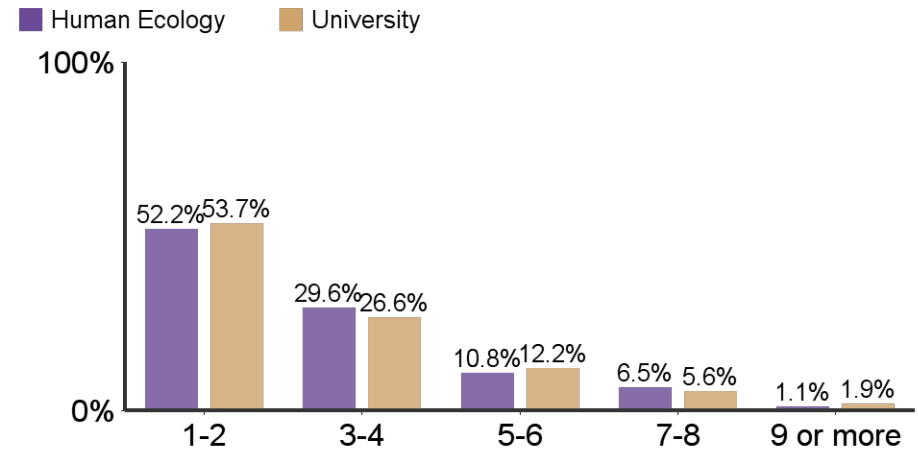
Students in my major are encouraged to participate in research/creative projects:



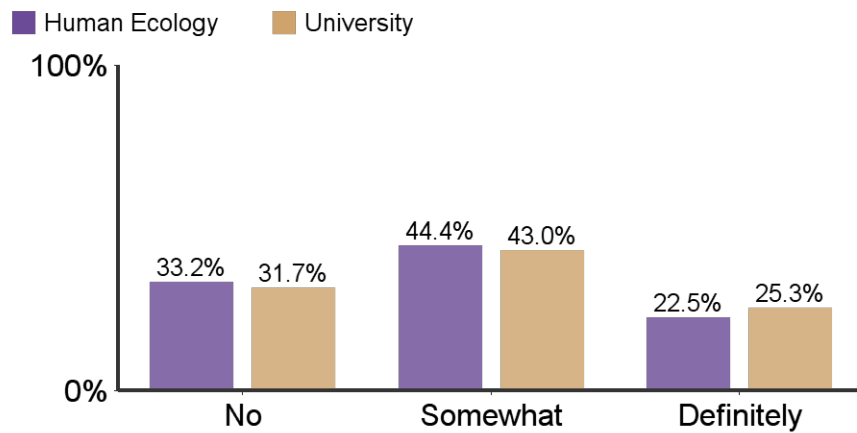
To what extent did your research experience contribute to your academic success?



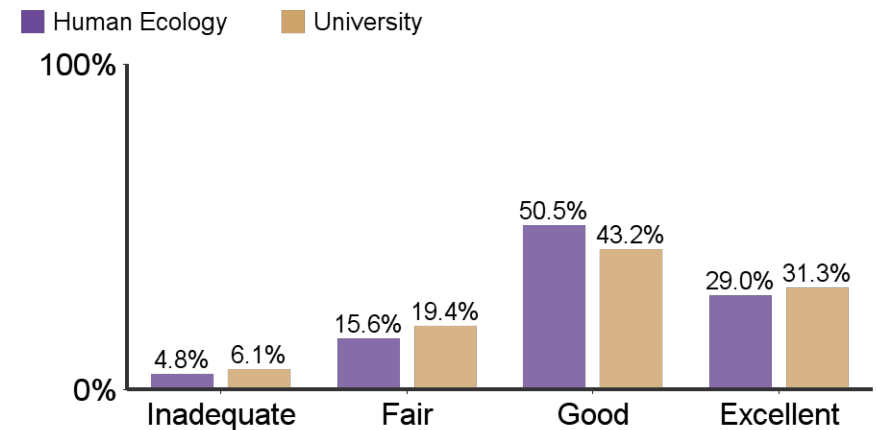
Number of semesters involved in a research or creative endeavor:



Did your research experience contribute to your career choice?

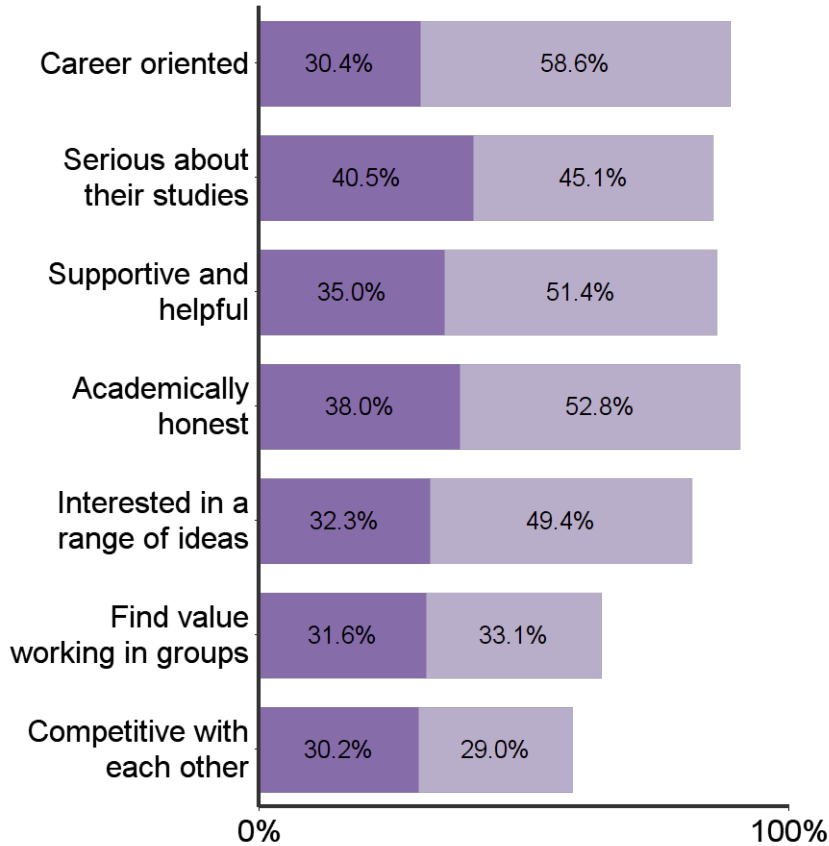


How would you rate the contribution of your mentor to your research?



Students in my major are:

■ Agree (Strongly Disagree, Disagree, & Neutral not shown)
■ Strongly Agree



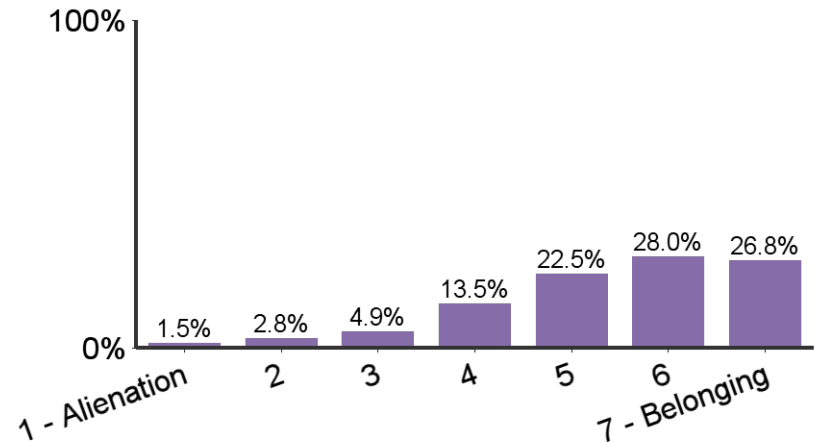
I found my major to be:

■ Agree (Strongly Disagree, Disagree, & Neutral not shown)
■ Strongly Agree



Sense of belonging with other students:

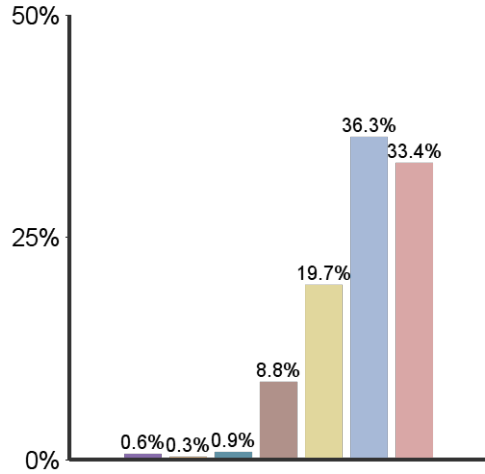
■ Relationships with other students, student groups, and activities



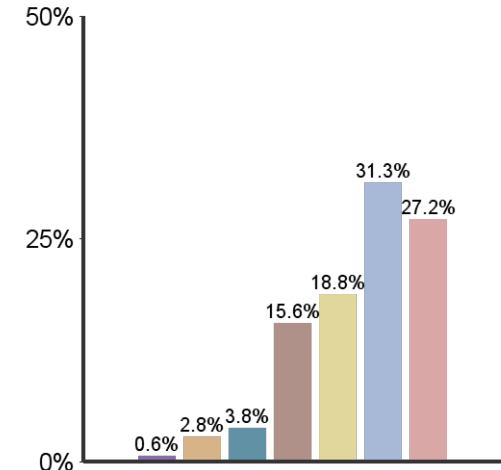
Emphasis K-State placed on the following:



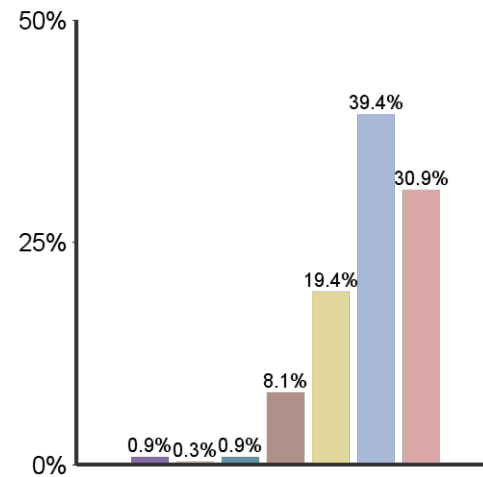
Academic & Scholarly Qualities



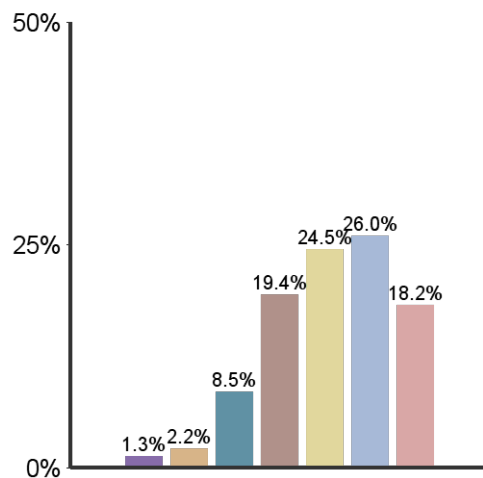
Vocational and occupational competence



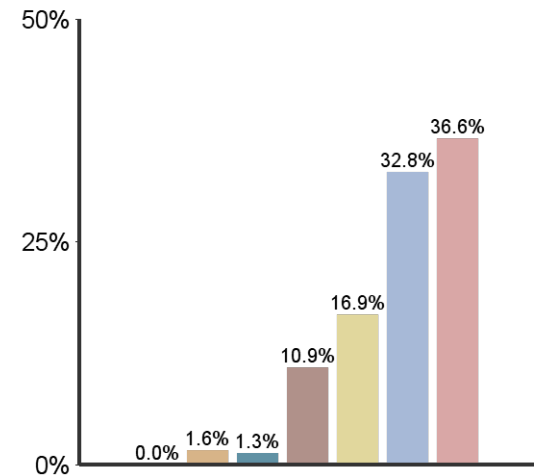
Being critical, evaluative, and analytical



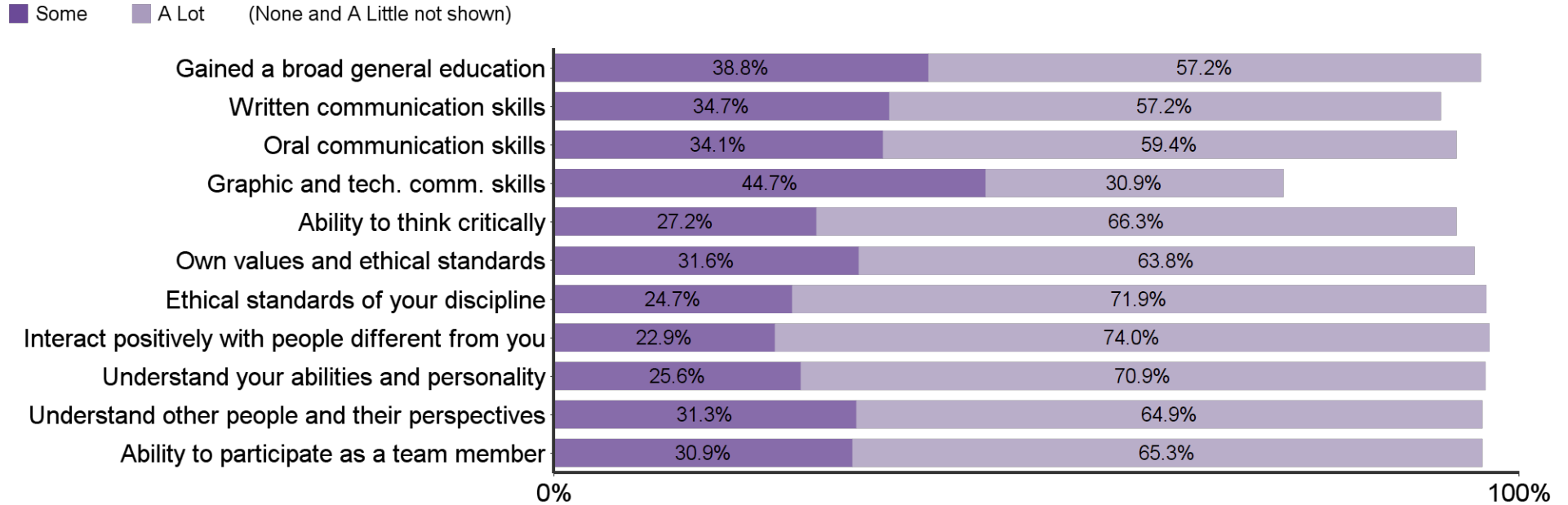
Aesthetic, expressive, & creative qualities



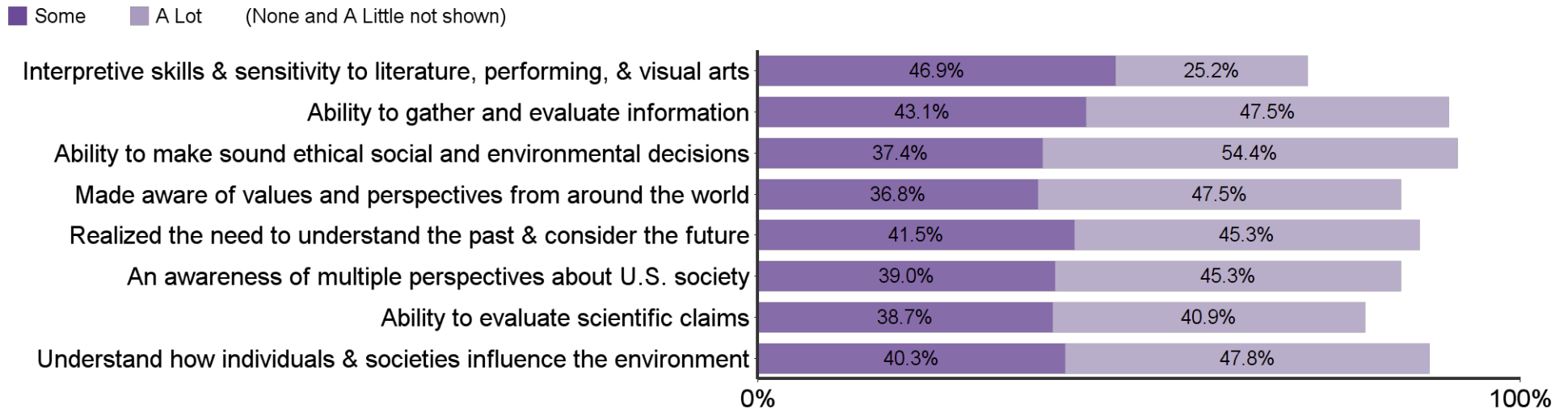
Personal relevance & practical value



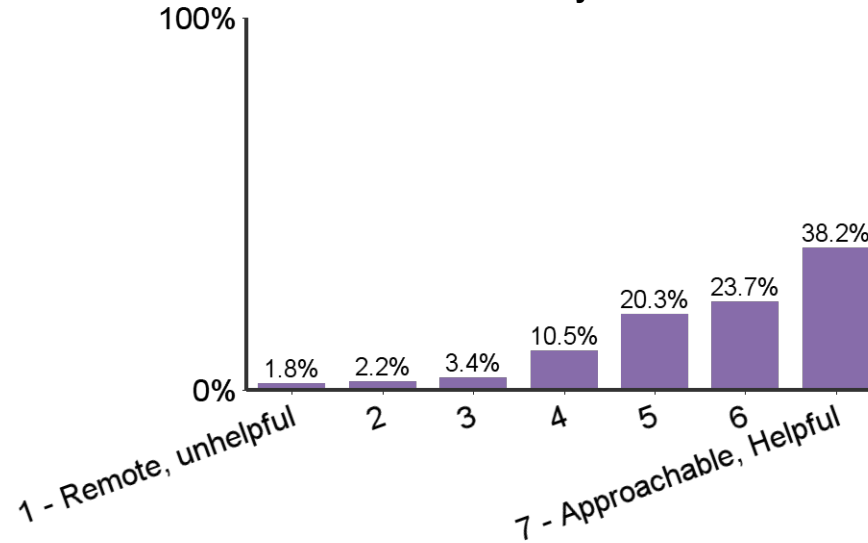
Progress made in K-State undergraduate learning outcomes:



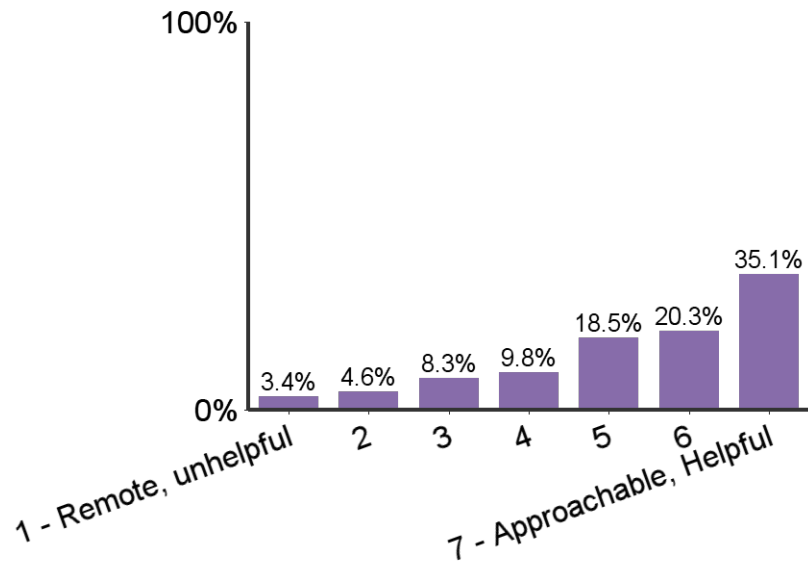
Progress made in K-State 8 general education learning outcomes



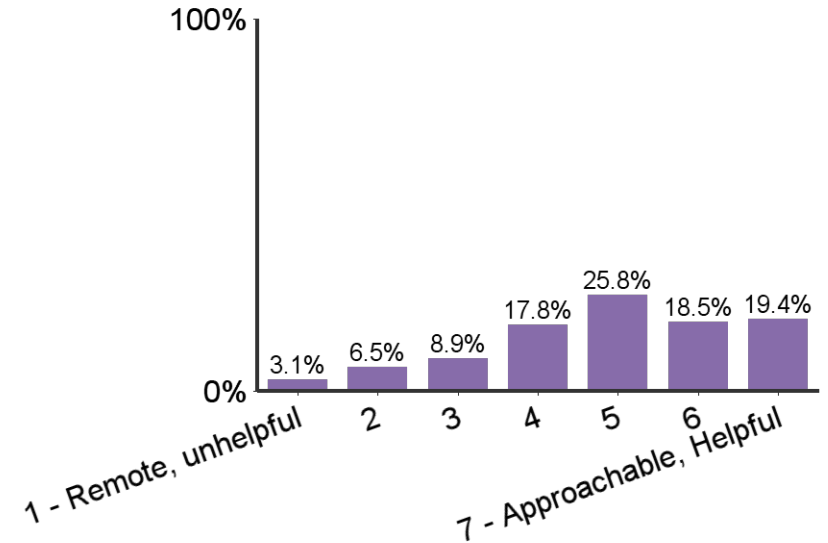
Sense of relationships with faculty:



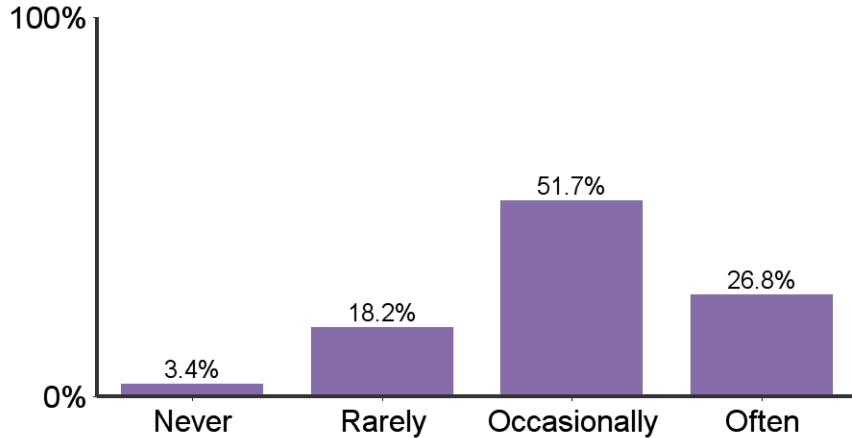
Sense of relationships with academic advisors:



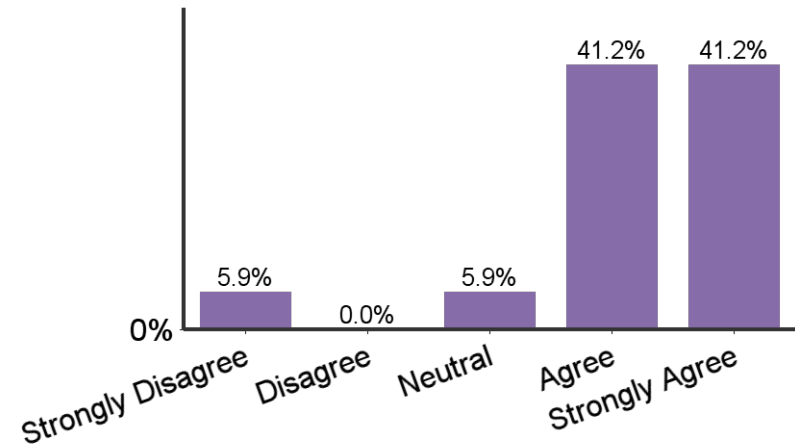
Sense of relationships with GTAs:



How often did you interact with faculty outside of class time?

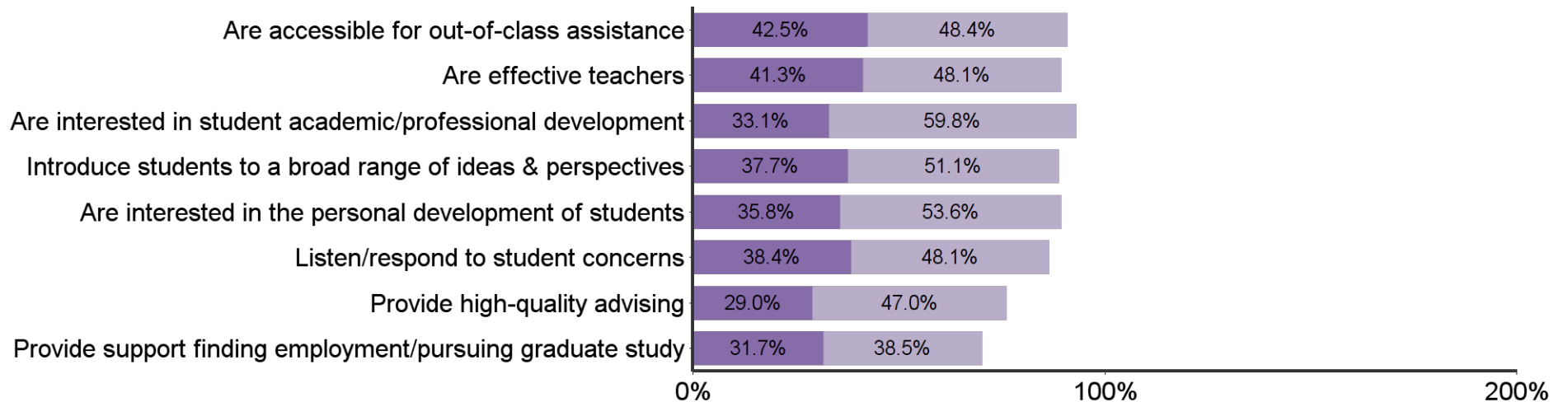


I found my major to be characterized by mutual respect between undergraduates and professors



In my major, faculty:

Agree Strongly Agree (Strongly Disagree, Disagree, & Neutral not shown)



Responses by Major

	Bar	Percent	Count
Family Stud & Human Serv		25.9%	90
Kinesiology		15.2%	53
Dietetics		11.5%	40
Hotel And Restaurant Mgmt		9.5%	33
Apparel And Textiles		6.6%	23
Interior Design		6.0%	21
Comm Scis & Disorders		6.0%	21
Public Health Nutrition		4.6%	16
Early Childhood Education		4.0%	14
Athletic Training		3.7%	13
Nutrition and Kinesiology		2.0%	7
Nutritional Sciences		1.7%	6
Personal Fin Plan		1.4%	5
Nutrition and Health		0.9%	3
Human Ecology		0.6%	2
Hospitality Management		0.3%	1
Total	-	100.0%	348

Responses by Gender

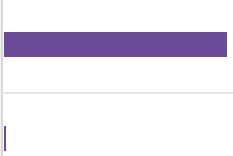
	Bar	Percent	Count
Female		87.6%	305
Male		12.4%	43

Responses by Race/Ethnicity

	Bar	Percent	Count
WHITE		85.9%	299
HISPANIC		4.9%	17
BLACK		2.9%	10
ASIAN		2.3%	8
NOTSPEC		1.7%	6
MULTIRAC		1.7%	6
HAWPACI		0.6%	2

Responses by Semester

	Bar	Percent	Count
Spring		62.4%	217
Fall		33.9%	118
Summer		3.7%	13

Responses by Citizenship Status			
	Bar	Percent	Count
USA		98.9%	344
Non-Citizen		1.1%	4

Credit Hours Transferred to K-State	
	Mean
Transfer Credit Hours	32.3

K-State Undergraduate GPA of Respondents	
	Mean
GPA	3.3

Age of Respondents	
	Mean
Age	23.6

What were your reasons for choosing your major? (select all that apply)		
	Count	%
Interesting subject	253	75.3%
Interest with subject	243	72.3%
Enjoyed courses in the field	194	57.7%
Meaningful contribution to society	169	50.3%
Job Demand	64	19.0%
Influence of family	55	16.4%
Challenge	55	16.4%
Respected positions	40	11.9%
Influence of friends	33	9.8%
Other	29	8.6%
Influence of professor	29	8.6%
Friends in major	22	6.5%
High salaries	17	5.1%

How many of your K-State courses included a service-learning component?		
	Count	%
None	54	16.1%
Some	247	73.5%
Most	34	10.1%
All	1	0.3%

What percentage of your courses did you take online at K-State?		
	Count	%
None	57	17.0%
1%-25%	234	69.6%
26%-50%	11	3.3%
51%-75%	9	2.7%
76%-99%	6	1.8%
100%	19	5.7%

During your years at Kansas State University, how many hours per week, on average, did you spend in the following activities?							
	None	1-5	6-10	11-15	16-20	21-30	30+
Internship/Practicum	50.8%	18.7%	10.3%	5.7%	6.3%	6.3%	6.6%
On-campus employment	52.5%	8.9%	8.9%	11.0%	8.6%	7.1%	3.1%
Off-campus employment	28.8%	7.1%	7.7%	11.3%	17.5%	14.1%	13.5%
Volunteer (unpaid) activities	16.0%	51.4%	16.0%	9.4%	3.3%	0.9%	3.0%

What is your general attitude toward K-State?		
	Count	Percent
Very Negative	1	0.3%
Negative	4	1.2%
Positive	107	31.8%
Very Positive	224	66.7%
Total	336	100.0%

When you applied to K-State it was your:		
	Count	Percent
First Choice	259	77.1%
Second Choice	62	18.5%
Third Choice	8	2.4%
Last Choice	7	2.1%
Total	336	100.0%

Would you recommend K-State to others?		
	Count	Percent
Definitely No		0.0%
Probably No	7	2.1%
Probably Yes	60	17.9%
Definitely Yes	269	80.1%
Total	336	100.0%

Students in my major are:							
	Strongly Disagree	Disagree	Neutral	Argee	Strongly Agree	Count	Average Value
Career oriented	0.9%	2.5%	7.7%	30.4%	58.6%	326	4.4
Serious about their studies	1.2%	4.0%	9.1%	40.5%	45.1%	328	4.2
Supportive and helpful to each other in meeting the academic demands of the program	1.5%	1.5%	10.6%	35.0%	51.4%	329	4.3
Academically honest (do not cheat, plagiarize)	0.6%	0.6%	7.9%	38.0%	52.8%	316	4.4
Interested in a broad range of ideas from many disciplines	1.6%	3.2%	13.6%	32.3%	49.4%	316	4.2
Find value working in groups	4.3%	8.4%	22.6%	31.6%	33.1%	323	3.8
Competitive with each other	3.4%	12.8%	24.6%	30.2%	29.0%	321	3.7

Students in my major are encouraged to:							
	Strongly Disagree	Disagree	Neutral	Argee	Strongly Agree	Count	Average Value
Become personally acquainted with the department's faculty	0.6%	6.4%	12.2%	38.1%	42.7%	328	4.2
Participate in professional interest groups	1.2%	8.6%	18.8%	38.0%	33.3%	324	3.9
Attend professional seminars and colloquia	1.9%	8.7%	21.1%	38.8%	29.5%	322	3.9
Become familiar with current and emerging technology	3.4%	8.0%	20.1%	38.1%	30.3%	323	3.8
Participate in research or creative projects with faculty or other students	2.8%	11.1%	19.1%	36.1%	30.9%	324	3.8

My major is:							
	Strongly Disagree	Disagree	Neutral	Argee	Strongly Agree	Count	Average Value
Characterized by mutual respect between undergraduate majors and professors	2.1%	2.1%	5.8%	36.1%	53.9%	330	4.4
Academically stimulating	2.4%	2.4%	5.8%	34.0%	55.3%	329	4.4

In my major:							
	Strongly Disagree	Disagree	Neutral	Argee	Strongly Agree	Count	Average Value
Faculty are accessible for out-of-class assistance	0.9%	0.9%	7.1%	42.5%	48.4%	322	4.4
Faculty are effective teachers	1.9%	1.2%	7.5%	41.3%	48.1%	322	4.3
Faculty are interested in the academic and professional development of students	1.2%	2.2%	3.7%	33.1%	59.8%	323	4.5
Faculty introduced students to a broad range of ideas, perspectives, and worldviews	1.6%	2.8%	6.9%	37.7%	51.1%	321	4.3
Faculty are interested in the personal development of students	1.9%	1.6%	7.2%	35.8%	53.6%	321	4.4
Faculty listen and respond to undergraduates regarding student needs, concerns, and suggestions	2.5%	3.1%	7.8%	38.4%	48.1%	320	4.3
Faculty/Advisor provided high-quality advising	5.6%	5.9%	12.5%	29.0%	47.0%	321	4.1
Faculty/Advisor/Staff provided support in finding appropriate employment or pursuing graduate study	7.1%	7.4%	15.4%	31.7%	38.5%	312	3.9

Sense of belonging:

	1 - Sense of Alienation	2	3	4	5	6	7 - Sense of Belonging	Count	Average Value
Relationships with other students, student groups, and activities	1.5%	2.8%	4.9%	13.5%	22.5%	28.0%	26.8%	325	5.4

Relationships with faculty and staff:

	1 - Unsympathetic, Remote, Unhelpful	2	3	4	5	6	7 - Approachable, Understandable, Helpful	Count	Average Value
Relationships with faculty members	1.8%	2.2%	3.4%	10.5%	20.3%	23.7%	38.2%	325	5.7
Relationships with academic advisor(s)	3.4%	4.6%	8.3%	9.8%	18.5%	20.3%	35.1%	325	5.4
Relationships with Graduate Teaching Assistants (GTAs)	3.1%	6.5%	8.9%	17.8%	25.8%	18.5%	19.4%	325	4.9

How often did you interact with faculty outside of class time?

	Count	Percent
Never	11	3.4%
Rarely	59	18.2%
Occasionally	168	51.7%
Often	87	26.8%
Total	325	100.0%

Did you participate in an undergraduate research experience of creative endeavor?

	Count	Percent
Yes	188	58.6%
No	133	41.4%
Total	321	100.0%

How would you rate the contribution of your mentor research/creative experience?

	Count	Percent
Inadequate	9	4.8%
Fair	29	15.6%
Good	94	50.5%
Excellent	54	29.0%
Total	186	100.0%

To what extent did your research/creative experience contribute to your academic success?

	Count	Percent
None	10	5.4%
Little	42	22.7%
Somewhat	85	45.9%
Very Much	48	25.9%
Total	185	100.0%

Did your research/creative experience contribute to your career choice?

	Count	Percent
No	62	33.2%
Somewhat	83	44.4%
Definitely	42	22.5%
Total	187	100.0%

How many semesters were you involved in a research/creative endeavor?

	Count	Percent
2 or less	97	52.2%
3-4	55	29.6%
5-6	20	10.8%
7-8	12	6.5%
9 or more	2	1.1%
Total	186	100.0%

What types of dissemination of your undergraduate research/creative endeavor did you successfully achieve? (select all that apply)

	Count	Percent
University research seminar presentation/poster	30	16.5%
Class presentation	131	72.0%
Poster at a conference outside of campus	14	7.7%
Oral presentation at a conference outside of campus	19	10.4%
Public performance/exhibition on campus	23	12.6%
Public performance/exhibition outside of campus	16	8.8%
Peer reviewed publication	29	15.9%
Other:	22	12.1%

As a result of your experience at Kansas State University, how much progress do you feel you have made in each of the following Undergraduate Learning Outcomes?						
	None	Little	Some	A Lot	Count	Average Value
Gained a broad general education about different fields of knowledge	0.0%	4.1%	38.8%	57.2%	320	3.5
Improved written communication skills	0.6%	7.5%	34.7%	57.2%	320	3.5
Improved oral communication skills	0.3%	6.3%	34.1%	59.4%	320	3.5
Improved graphic and technological communication skills.	4.1%	20.3%	44.7%	30.9%	320	3
Improved ability to think critically (analytically and logically).	0.6%	5.9%	27.2%	66.3%	320	3.6
Developed own values and ethical standards	0.9%	3.8%	31.6%	63.7%	320	3.6
Understand the ethical standards of your discipline or profession	0.0%	3.4%	24.7%	71.9%	320	3.7
Ability to interact positively with people who are different from you	0.6%	2.5%	22.9%	74.0%	319	3.7
Understand your abilities, interests, and personality	0.9%	2.5%	25.6%	70.9%	320	3.7
Understand other people and their abilities, interests, and perspectives	0.3%	3.4%	31.3%	64.9%	319	3.6
Ability to participate as a team member	0.3%	3.4%	30.9%	65.3%	320	3.6
Developed good health habits and physical fitness	5.3%	14.7%	35.6%	44.4%	320	3.2

As a result of your experience at Kansas State University, how much progress do you feel you have made in each of the following K-State 8 areas?						
	None	Little	Some	A Lot	Count	Average Value
Developed interpretive skills and heightened sensitivity to stimulating responses to literature, the performing arts, the visual arts.	7.9%	20.1%	46.9%	25.2%	318	2.9
Developed the ability to gather and evaluate information, weigh alternative evidence, and recognize when available evidence is inadequate to draw a conclusion.	2.5%	6.9%	43.1%	47.5%	318	3.4
Developed the ability to think through ethical dilemmas, make sound decisions when facing real-life situations, and apply ethical standards to social and/or environmental issues.	2.5%	5.7%	37.4%	54.4%	318	3.4
Made aware of values, perspectives, beliefs, behaviors, policies and customs from around the world	2.8%	12.9%	36.8%	47.5%	318	3.3
Realized the need to understand the past and thoughtfully consider the future to glimpse how it may continue to develop.	2.8%	10.4%	41.5%	45.3%	318	3.3
Developed an awareness of self and multiple perspectives about U.S. society and how group affiliation affects people's perceptions and experiences.	2.5%	13.2%	39.0%	45.3%	318	3.3
Developed the ability to evaluate the merit of scientific and technological claims by using central facts, ideas and theories related to the study of living systems and the physical universe.	6.3%	14.2%	38.7%	40.9%	318	3.1
Understand and analyze how individuals, groups and societies behave and influence on another and the natural environment.	2.8%	9.1%	40.3%	47.8%	318	3.3

Universities differ from one another in the extent to which they emphasize various aspects of student development. Think of your experience at Kansas State University. To what extent was each of the following emphasized?

	1	2	3	4	5	6	7	Count	Average Value
The development of academic, scholarly, and intellectual qualities	0.6%	0.3%	0.9%	8.8%	19.7%	36.3%	33.4%	1798	5.7
The development of aesthetic, expressive, and creative qualities	1.3%	2.2%	8.5%	19.4%	24.5%	26.0%	18.2%	1798	5
Being critical, evaluative, and analytical	0.9%	0.3%	0.9%	8.1%	19.4%	39.4%	30.9%	1797	5.8
The development of vocational and occupational competence	0.6%	2.8%	3.8%	15.6%	18.8%	31.3%	27.2%	1799	5.4
The personal relevance and practical value of your courses	0.0%	1.6%	1.3%	10.9%	16.9%	32.8%	36.6%	1798	5.5

What are your plans after graduation?

	Count	%
Have a job that will continue after graduation	26	8.1%
Have a job lined up to begin after graduation	56	17.5%
Will begin to look for a job	98	30.6%
Pursue additional undergraduate education	18	5.6%
Will attend graduate school	91	28.4%
Volunteer service (Peace Corps, Americorp, etc.)	1	0.3%
No plans for a job at this time	4	1.3%
Military	2	0.6%
Starting or raising a family	4	1.3%
Other	20	6.3%