

*\*Responses for this report only include seniors within the college, except where noted.*

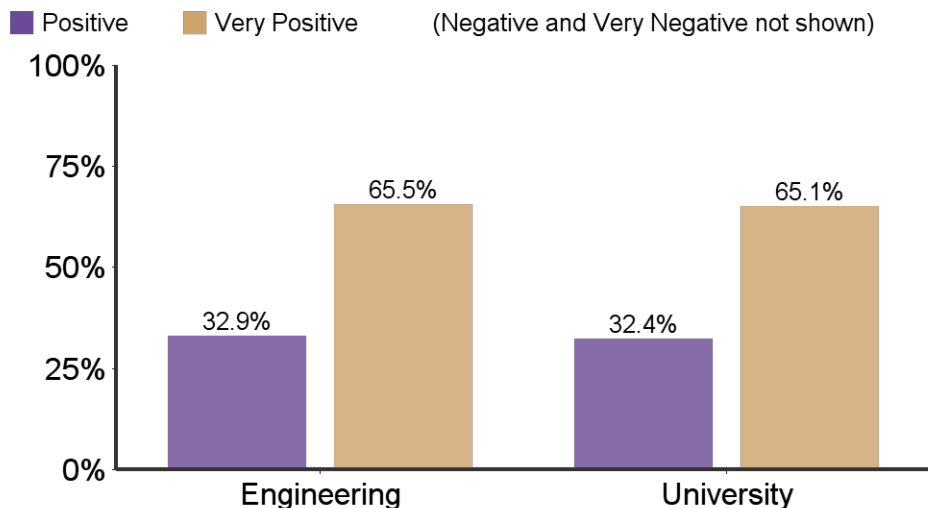
|                    | Engineering | University |
|--------------------|-------------|------------|
| Responses          | 323         | 2022       |
| Initial Population | 524         | 3643       |
| Response Rate      | 61.6%       | 55.5%      |

**Survey Information:**

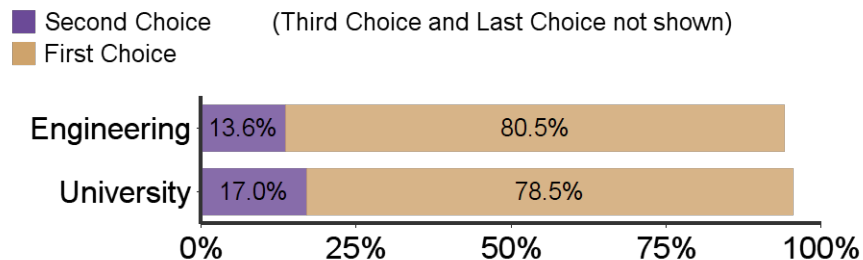
- The Senior Survey is designed to give undergraduate students the opportunity to reflect upon their K-State experiences. This information is used to improve the college experience for future students by identifying strengths in our programs as well as areas that need further development. The survey includes issues relating to satisfaction with K-State regarding academic programs, intellectual and personal growth, student services, and preparation for a career or a graduate/professional school.
- The survey is offered electronically (through Qualtrics) to seniors who have been cleared for graduation by their respective colleges.
- The 2013-14 was administered to 3643 seniors expected to graduate in summer 2013, fall 2013, and spring 2014. It was offered to summer and fall graduates 12/2/13 to 1/15/14 and to spring graduates 4/28/14 to 6/6/14.

| Table of Contents  |    |
|--|----|
| Introduction   | 1  |
| Section I: Overall Satisfaction                                      | 2  |
| Section II: Future Plans   | 3  |
| Section IIIa: 2025--Undergraduate Educational Experience             | 4  |
| Section IIIb: 2025--Research, Scholarly, Creative Activity Discovery | 6  |
| Section IIIc: 2025--Faculty and Staff                                | 9  |
| Section IV: Demographics   | 11 |
| Section V: Results Tables  | 13 |

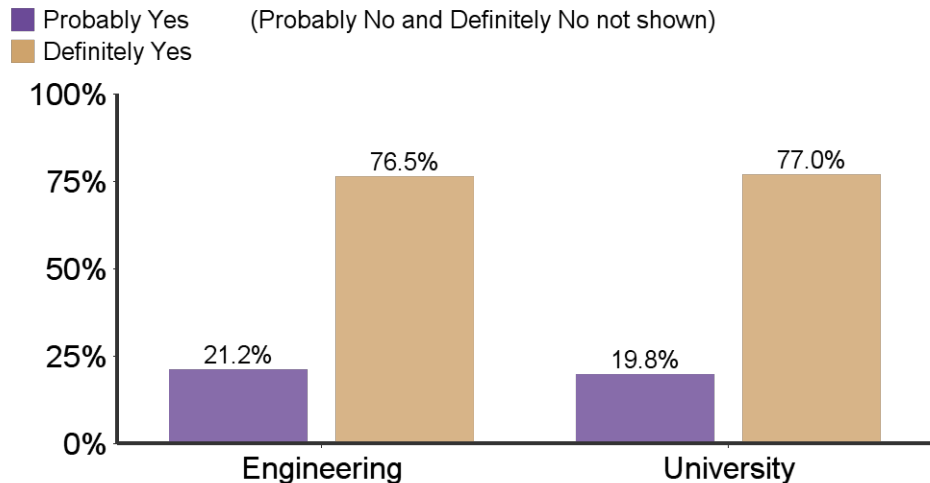
**What is your general attitude toward K-State?**



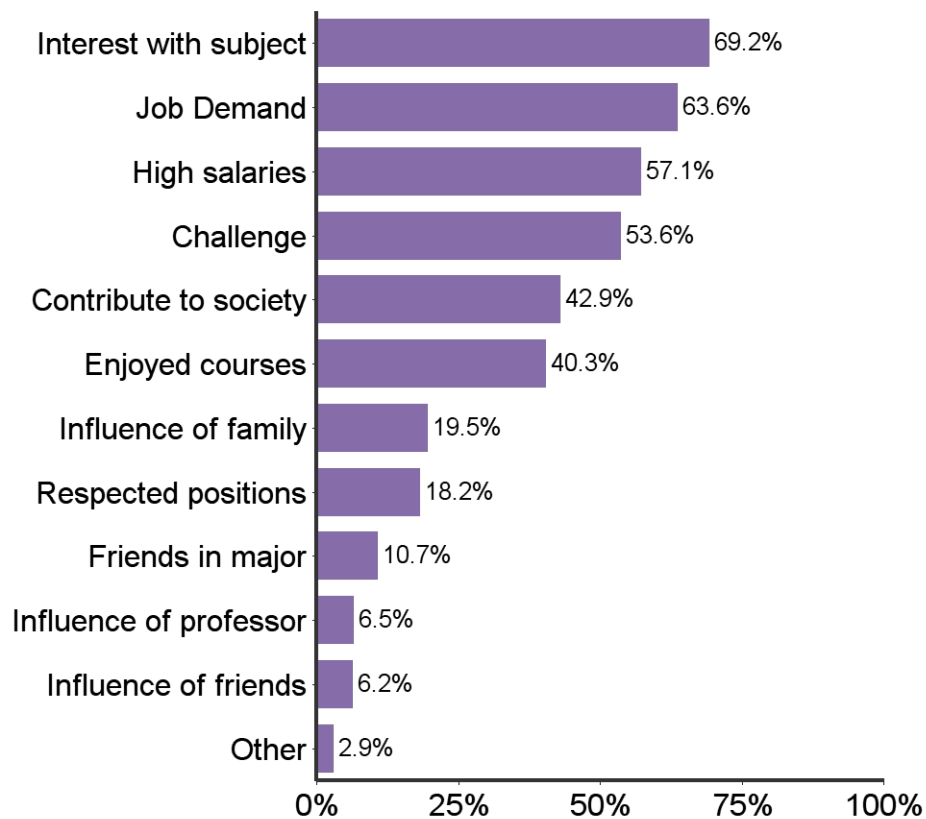
**When you applied to K-State, it was your:**



**Would you recommend K-State to others?**

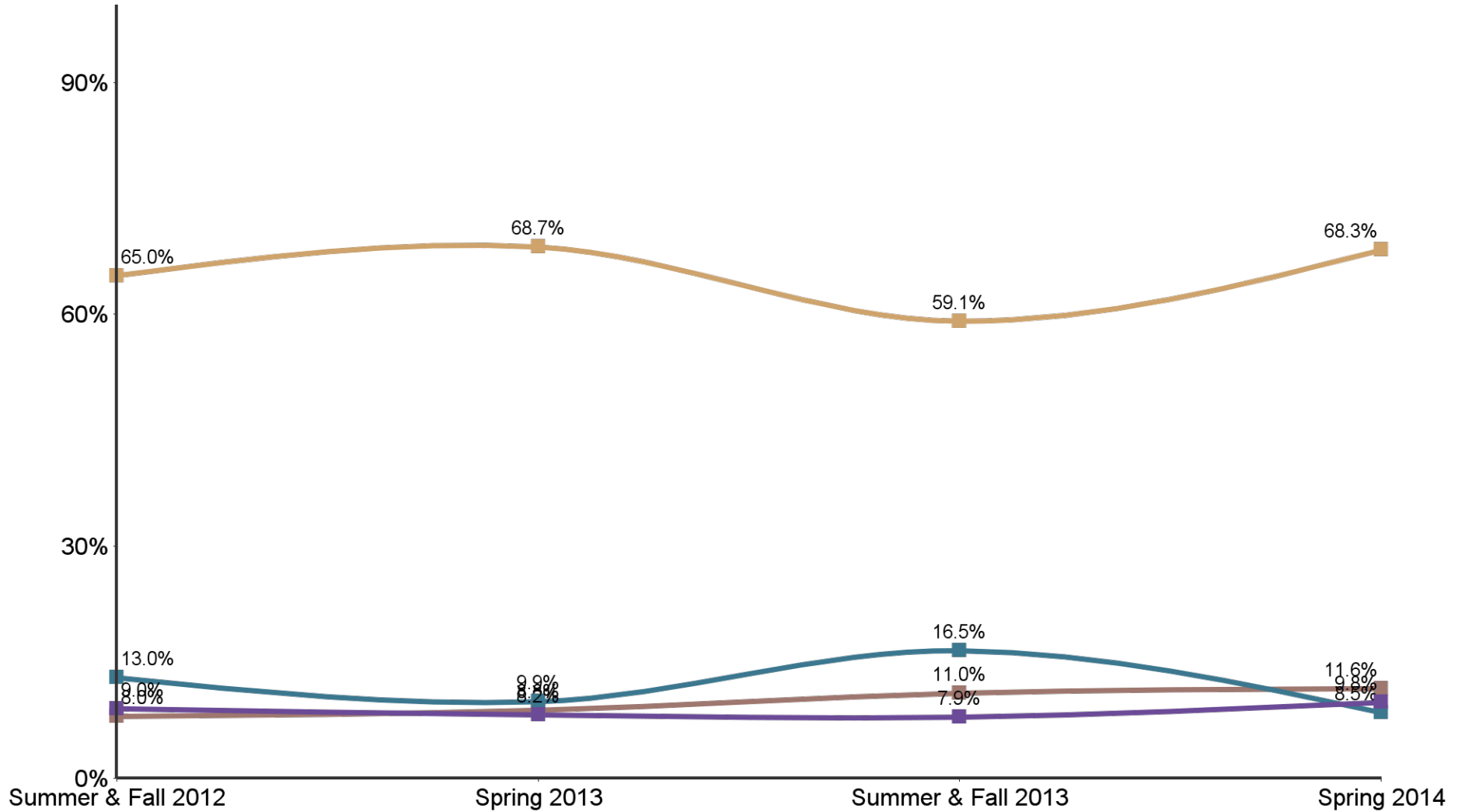


**Reasons for choosing major**

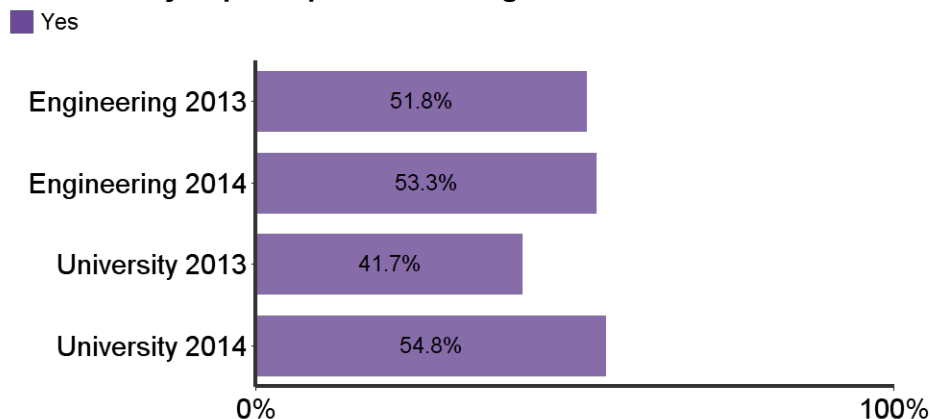


**What are your plans after graduation?  
(selected results by semester)**

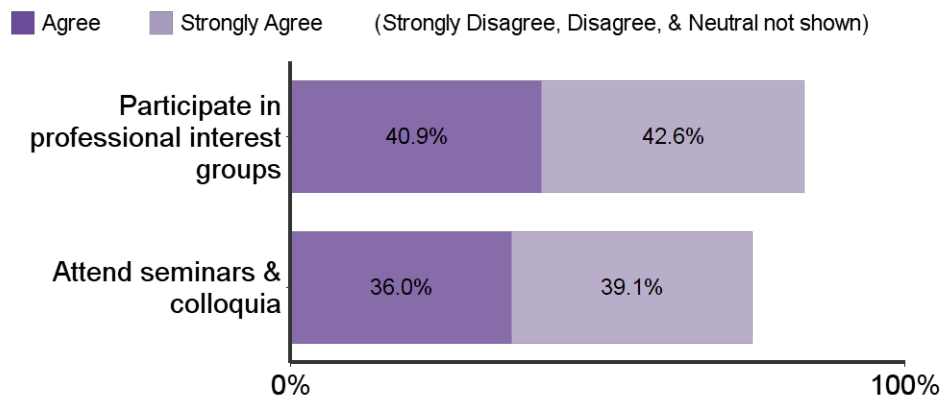
■ Have a job that will continue after graduation    
 ■ Have a job lined up to begin after graduation    
 ■ Will begin to look for a job    
 ■ Will attend graduate school



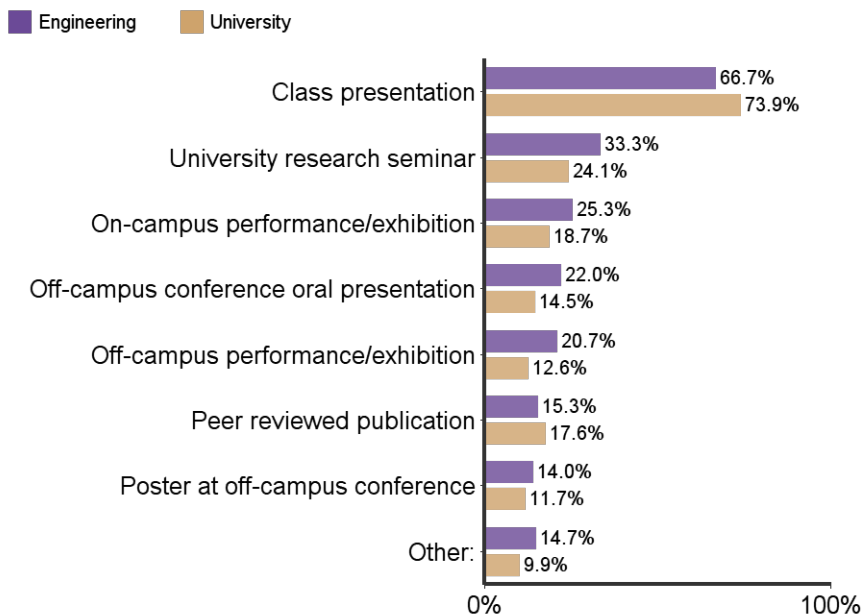
**Have you participated in undergraduate research?**



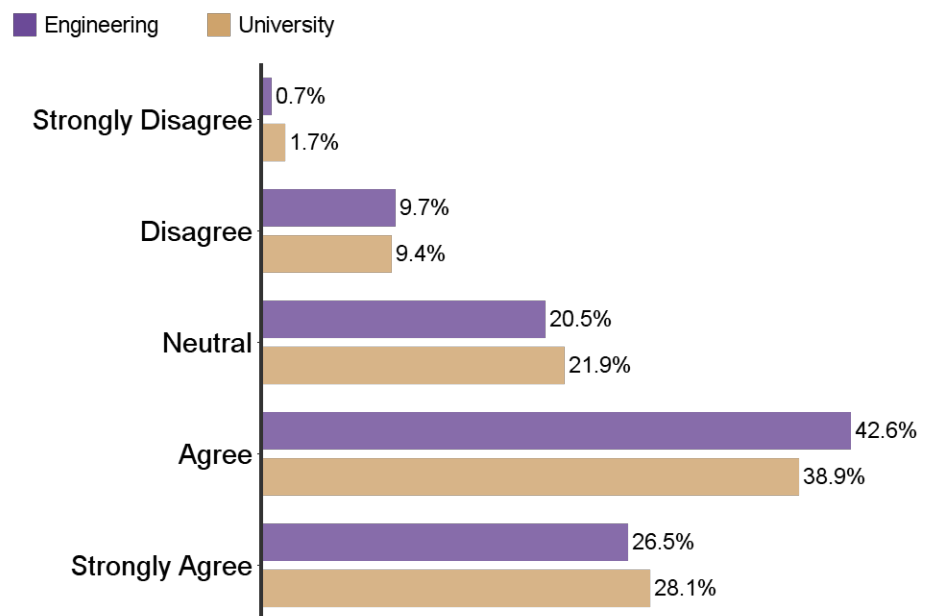
**Students in my major are encouraged to:**



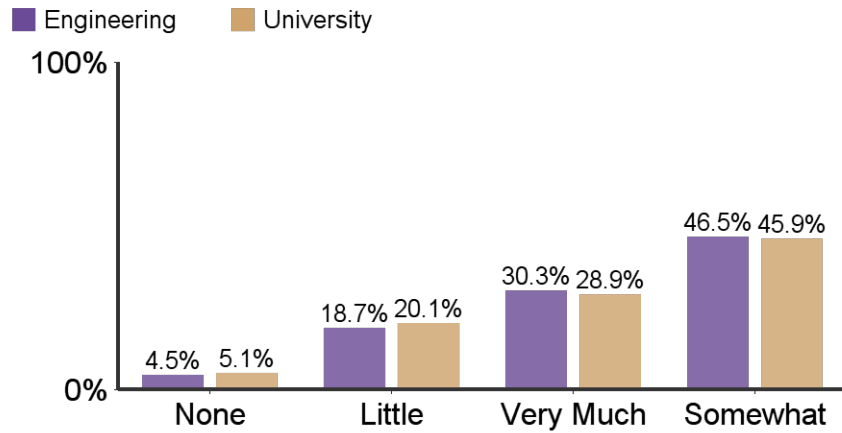
**What type(s) of research dissemination have you successfully achieved?**



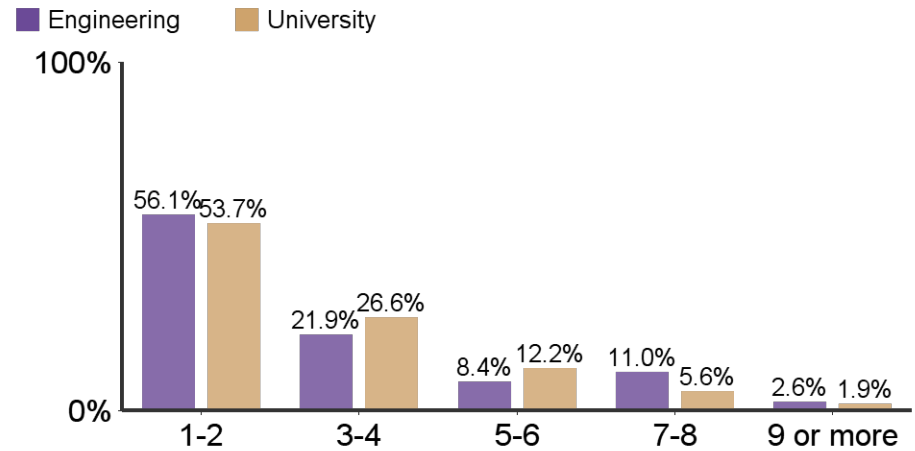
**Students in my major are encouraged to participate in research/creative projects:**



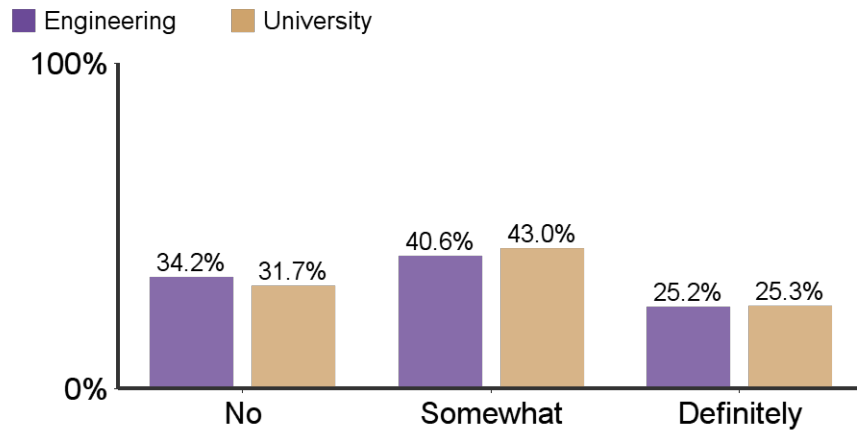
**To what extent did your research experience contribute to your academic success?**



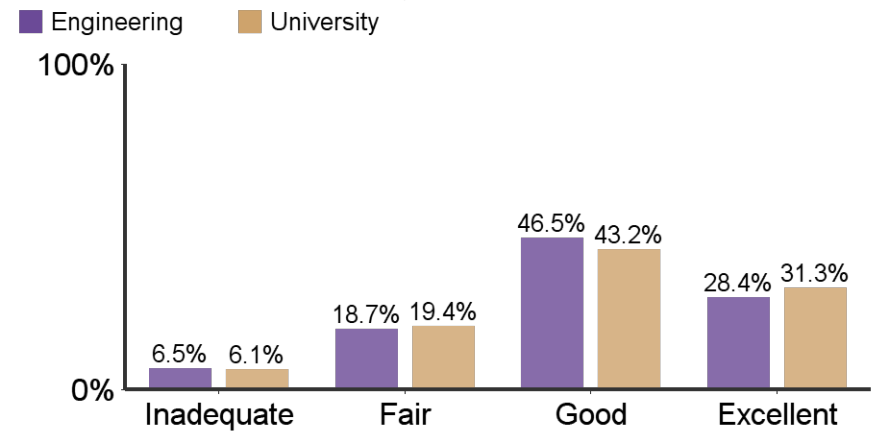
**Number of semesters involved in a research or creative endeavor:**



**Did your research experience contribute to your career choice?**

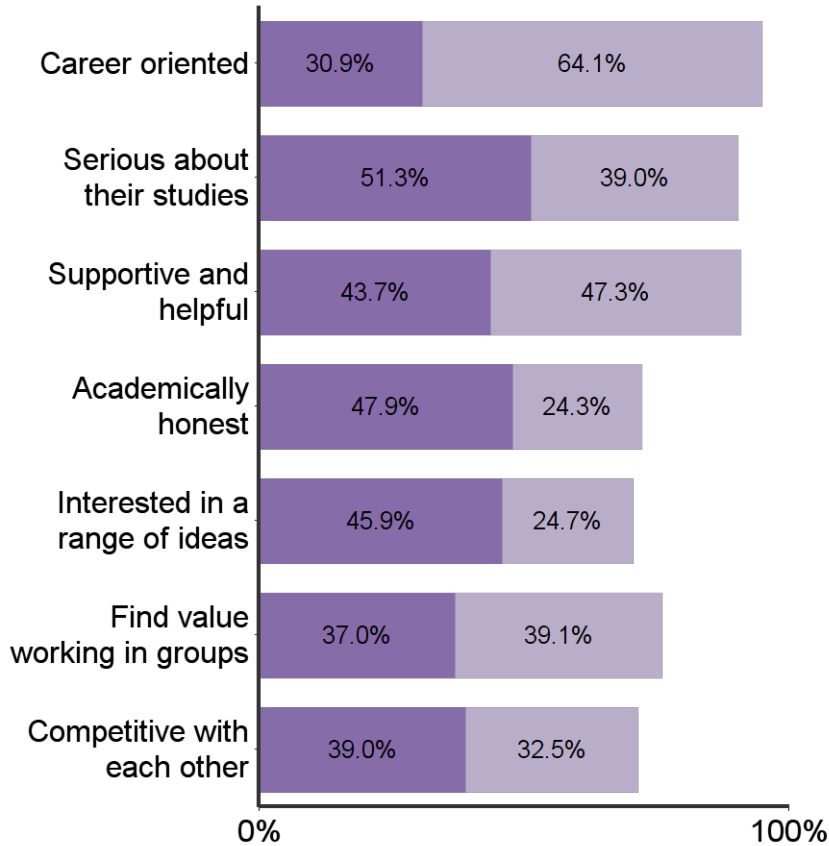


**How would you rate the contribution of your mentor to your research?**



**Students in my major are:**

■ Agree (Strongly Disagree, Disagree, & Neutral not shown)  
■ Strongly Agree



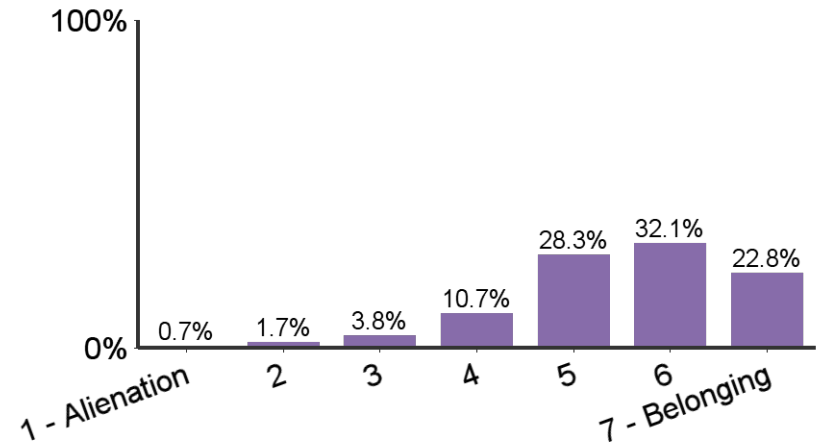
**I found my major to be:**

■ Agree (Strongly Disagree, Disagree, & Neutral not shown)  
■ Strongly Agree



**Sense of belonging with other students:**

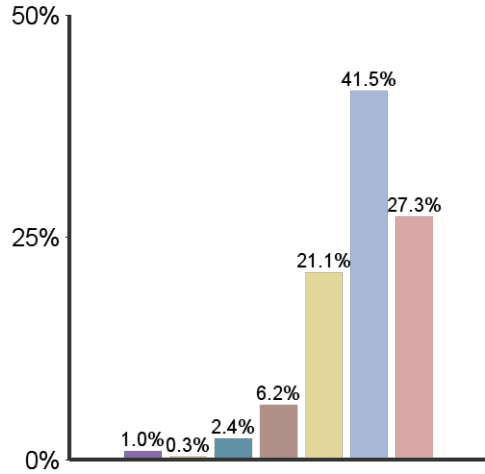
■ Relationships with other students, student groups, and activities



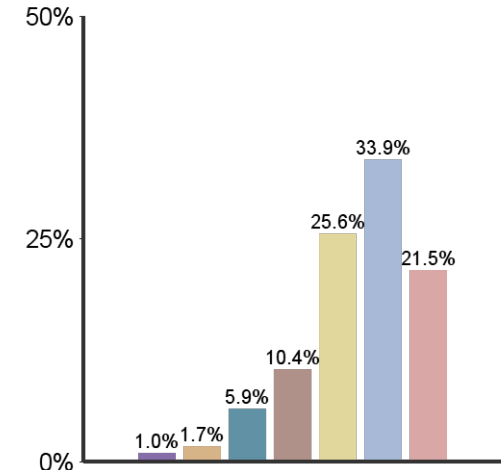
**Emphasis K-State placed on the following:**



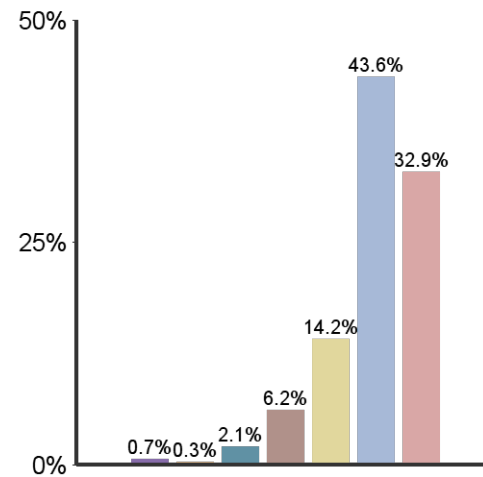
**Academic & Scholarly Qualities**



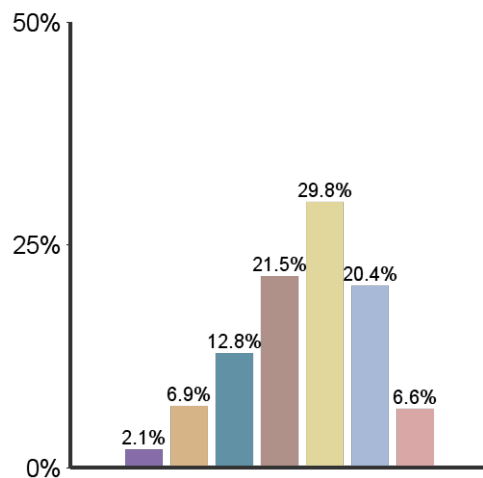
**Vocational and occupational competence**



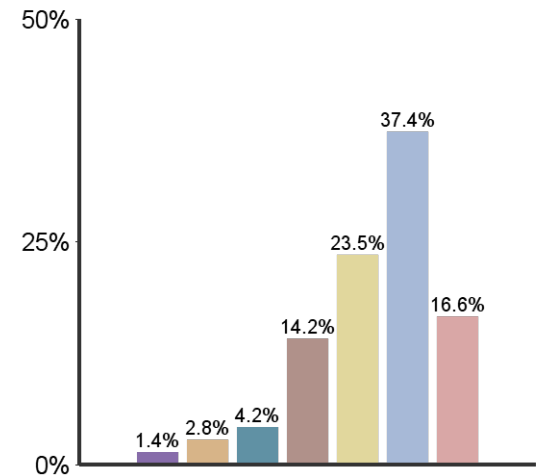
**Being critical, evaluative, and analytical**



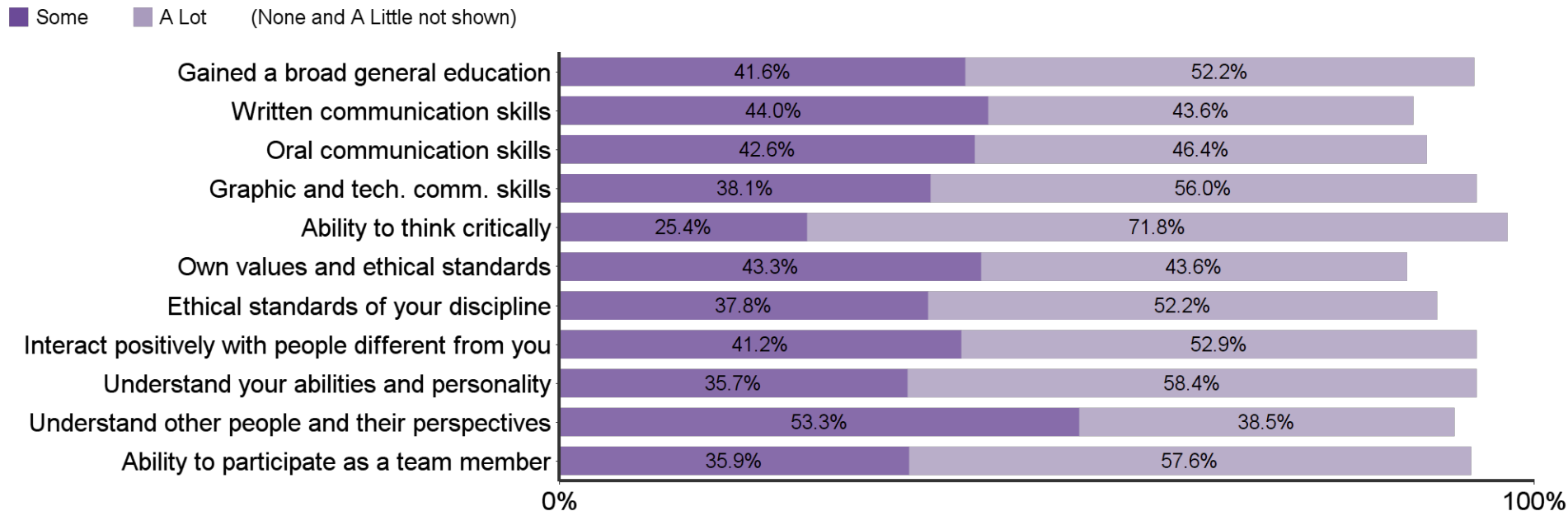
**Aesthetic, expressive, & creative qualities**



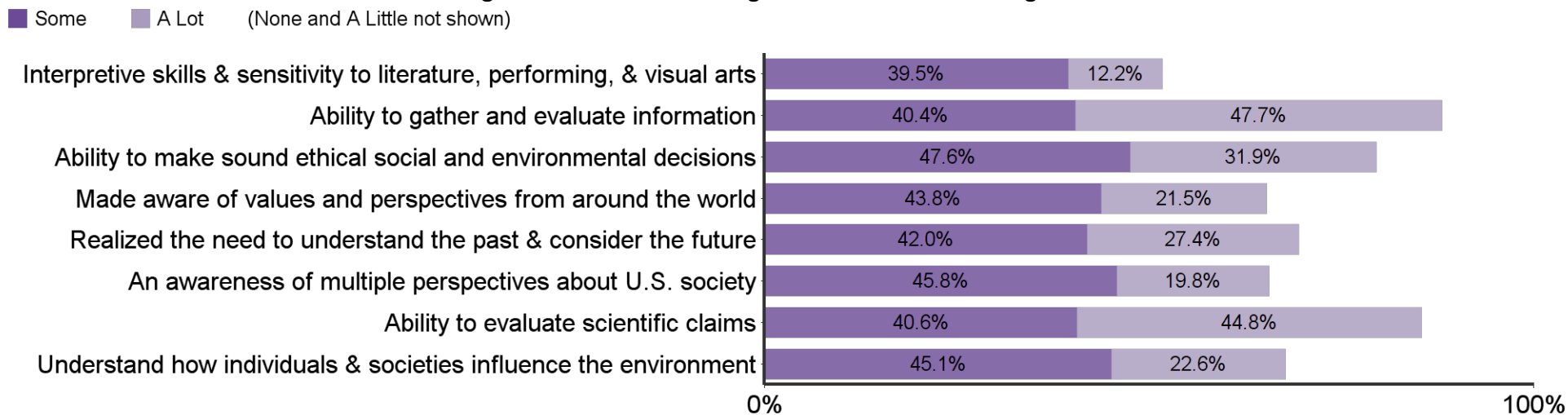
**Personal relevance & practical value**



**Progress made in K-State undergraduate learning outcomes:**

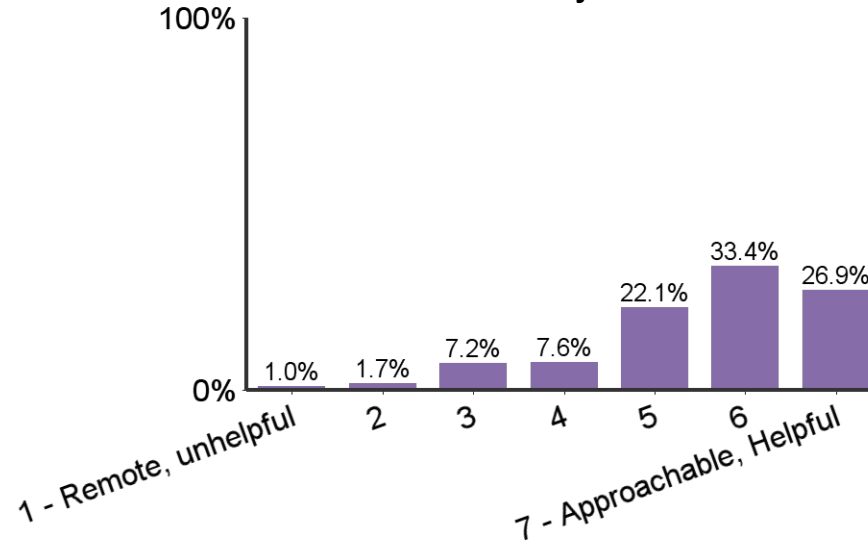


**Progress made in K-State 8 general education learning outcomes**

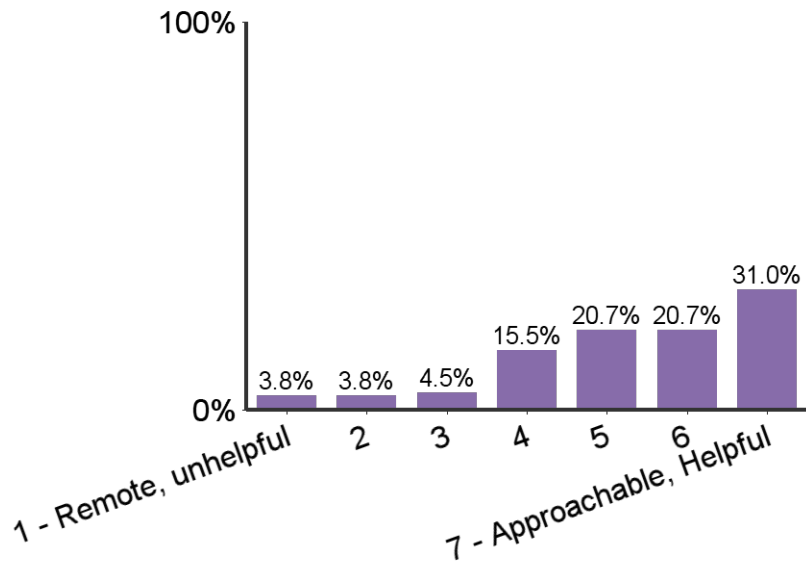




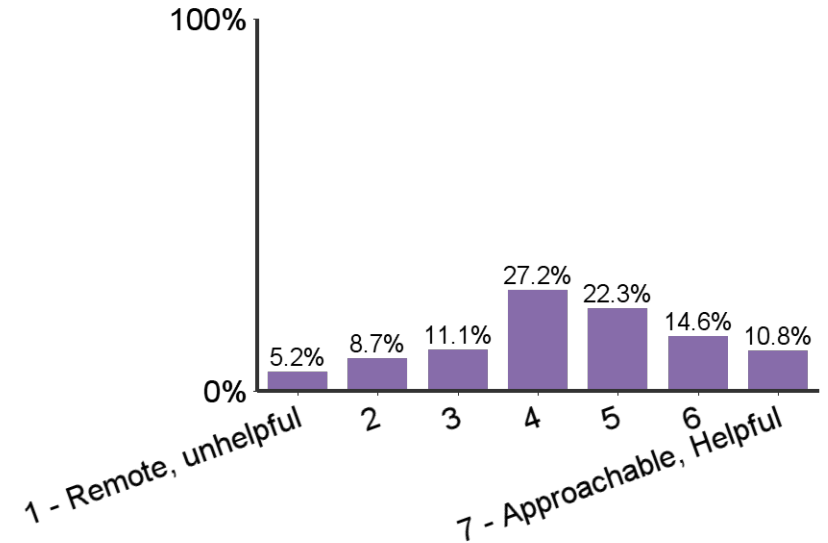
**Sense of relationships with faculty:**



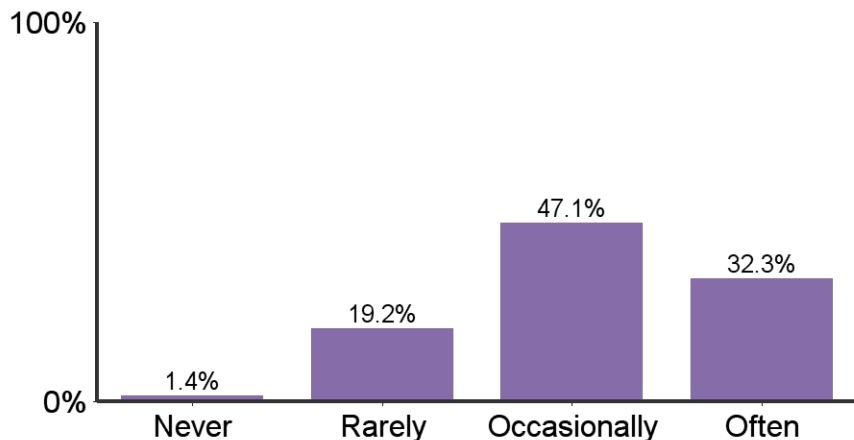
**Sense of relationships with academic advisors:**



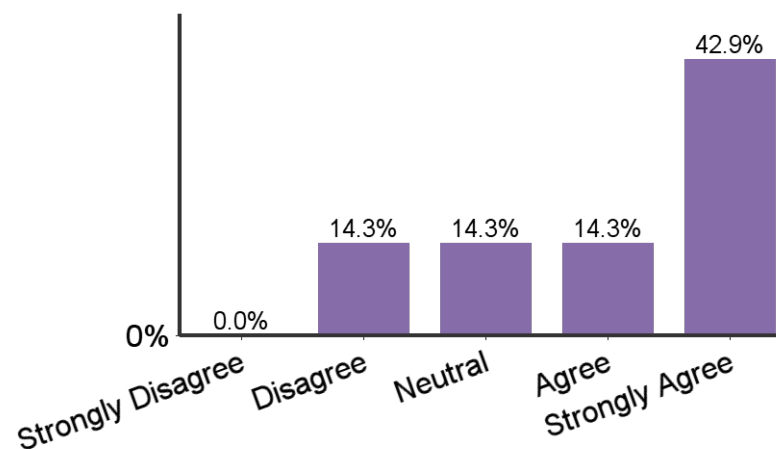
**Sense of relationships with GTAs:**



How often did you interact with faculty outside of class time?

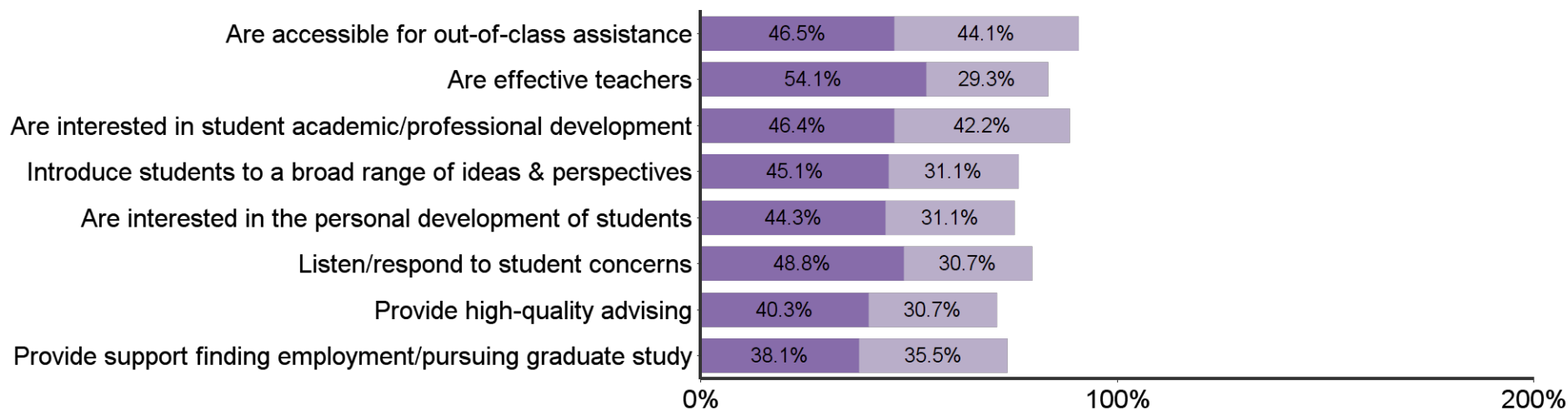


I found my major to be characterized by mutual respect between undergraduates and professors



In my major, faculty:

■ Agree   
 ■ Strongly Agree   
 (Strongly Disagree, Disagree, & Neutral not shown)




| Responses by Major        |     |         |       |
|---------------------------|-----|---------|-------|
|                           | Bar | Percent | Count |
| Mechanical Engineering    |     | 26.2%   | 84    |
| Architectural Engineering |     | 13.1%   | 42    |
| Construction Sci And Mgmt |     | 12.1%   | 39    |
| Chemical Engineering      |     | 9.7%    | 31    |
| Civil Engineering         |     | 9.7%    | 31    |
| Electrical Engineering    |     | 8.4%    | 27    |
| Computer Science          |     | 5.6%    | 18    |
| Computer Engineering      |     | 5.3%    | 17    |
| Industrial Engineering    |     | 5.0%    | 16    |
| Biological Systems Engg   |     | 4.0%    | 13    |
| Information Systems       |     | 0.9%    | 3     |
| Total                     | -   | 100.0%  | 321   |

| Responses by Gender |     |         |       |
|---------------------|-----|---------|-------|
|                     | Bar | Percent | Count |
| Female              |     | 15.6%   | 50    |
| Male                |     | 84.4%   | 271   |

| Responses by Race/Ethnicity |     |         |       |
|-----------------------------|-----|---------|-------|
|                             | Bar | Percent | Count |
| WHITE                       |     | 82.2%   | 264   |
| ASIAN                       |     | 8.7%    | 28    |
| HISPANIC                    |     | 3.7%    | 12    |
| NOTSPEC                     |     | 2.5%    | 8     |
| BLACK                       |     | 1.6%    | 5     |
| MULTIRAC                    |     | 0.9%    | 3     |
| AMERIND                     |     | 0.3%    | 1     |

| Responses by Semester |     |         |       |
|-----------------------|-----|---------|-------|
|                       | Bar | Percent | Count |
| Spring                |     | 56.1%   | 180   |
| Fall                  |     | 41.7%   | 134   |
| Summer                |     | 2.2%    | 7     |

| Responses by Citizenship Status |   |         |       |
|---------------------------------|---|---------|-------|
|                                 | Bar   | Percent | Count |
| USA                             |  | 91.6%   | 294   |
| Non-Citizen                     |   | 5.0%    | 16    |

| Credit Hours Transferred to K-State |      |
|-------------------------------------|------|
|                                     | Mean |
| Transfer Credit Hours               | 27.9 |

| K-State Undergraduate GPA of Respondents |      |
|--|------|
|  | Mean |
| GPA                                      | 3.2  |

| Age of Respondents |      |
|--------------------|------|
|                    | Mean |
| Age                | 23.3 |

| <b>What were your reasons for choosing your major?<br/>(select all that apply)</b> |       |       |
|--|-------|-------|
|  | Count | %     |
| Interesting subject  | 256   | 83.1% |
| Interest with subject  | 213   | 69.2% |
| Job Demand   | 196   | 63.6% |
| High salaries  | 176   | 57.1% |
| Challenge  | 165   | 53.6% |
| Meaningful contribution to society   | 132   | 42.9% |
| Enjoyed courses in the field   | 124   | 40.3% |
| Influence of family  | 60    | 19.5% |
| Respected positions  | 56    | 18.2% |
| Friends in major   | 33    | 10.7% |
| Influence of professor   | 20    | 6.5%  |
| Influence of friends   | 19    | 6.2%  |
| Other  | 9     | 2.9%  |

| <b>How many of your K-State courses included a service-learning component?</b> |       |       |
|--|-------|-------|
|  | Count | %     |
| None   | 186   | 60.4% |
| Some   | 120   | 39.0% |
| Most   | 2     | 0.6%  |
| All  |       | 0.0%  |

| <b>What percentage of your courses did you take online at K-State?</b> |       |       |
|--|-------|-------|
|  | Count | %     |
| None   | 134   | 43.5% |
| 1%-25%   | 170   | 55.2% |
| 26%-50%  | 2     | 0.6%  |
| 51%-75%  |       | 0.0%  |
| 76%-99%  | 2     | 0.6%  |
| 100%   |       | 0.0%  |

| <b>During your years at Kansas State University, how many hours per week, on average, did you spend in the following activities?</b> |       |       |       |       |       |       |      |
|--|-------|-------|-------|-------|-------|-------|------|
|  | None  | 1-5   | 6-10  | 11-15 | 16-20 | 21-30 | 30+  |
| Internship/Practicum   | 50.8% | 14.8% | 8.1%  | 8.1%  | 5.0%  | 1.0%  | 8.7% |
| On-campus employment   | 41.2% | 16.2% | 12.8% | 16.9% | 8.8%  | 3.4%  | 0.7% |
| Off-campus employment  | 50.7% | 8.4%  | 9.1%  | 10.8% | 8.4%  | 7.4%  | 5.1% |
| Volunteer (unpaid) activities  | 45.5% | 33.8% | 9.3%  | 6.2%  | 1.7%  | 1.0%  | 2.4% |

| <b>What is your general attitude toward K-State?</b> |       |         |
|--|-------|---------|
|  | Count | Percent |
| Very Negative  | 2     | 0.7%    |
| Negative   | 3     | 1.0%    |
| Positive   | 101   | 32.9%   |
| Very Positive  | 201   | 65.5%   |
| Total  | 307   | 100.0%  |

| <b>When you applied to K-State it was your:</b> |       |         |
|---|-------|---------|
|   | Count | Percent |
| First Choice                                    | 248   | 80.5%   |
| Second Choice                                   | 42    | 13.6%   |
| Third Choice                                    | 12    | 3.9%    |
| Last Choice                                     | 6     | 1.9%    |
| Total   | 308   | 100.0%  |

| <b>Would you recommend K-State to others?</b> |       |         |
|---|-------|---------|
|   | Count | Percent |
| Definitely No                                 | 3     | 1.0%    |
| Probably No                                   | 4     | 1.3%    |
| Probably Yes                                  | 65    | 21.2%   |
| Definitely Yes                                | 235   | 76.5%   |
| Total   | 307   | 100.0%  |

| Students in my major are:   |                   |          |         |       |                |       |               |
|---|-------------------|----------|---------|-------|----------------|-------|---------------|
|   | Strongly Disagree | Disagree | Neutral | Argee | Strongly Agree | Count | Average Value |
| Career oriented   | 0.3%              | 0.3%     | 4.4%    | 30.9% | 64.1%          | 298   | 4.6           |
| Serious about their studies   | 0.7%              | 2.0%     | 7.0%    | 51.3% | 39.0%          | 300   | 4.3           |
| Supportive and helpful to each other in meeting the academic demands of the program | 0.7%              | 0.7%     | 7.7%    | 43.7% | 47.3%          | 300   | 4.4           |
| Academically honest (do not cheat, plagiarize)                                      | 1.7%              | 4.5%     | 21.6%   | 47.9% | 24.3%          | 292   | 3.9           |
| Interested in a broad range of ideas from many disciplines                          | 1.4%              | 6.4%     | 21.6%   | 45.9% | 24.7%          | 296   | 3.9           |
| Find value working in groups  | 0.7%              | 5.4%     | 17.8%   | 37.0% | 39.1%          | 297   | 4.1           |
| Competitive with each other   | 0.7%              | 5.8%     | 22.0%   | 39.0% | 32.5%          | 295   | 4             |

| Students in my major are encouraged to:                                     |                   |          |         |       |                |       |               |
|---|-------------------|----------|---------|-------|----------------|-------|---------------|
|   | Strongly Disagree | Disagree | Neutral | Argee | Strongly Agree | Count | Average Value |
| Become personally acquainted with the department's faculty                  | 0.7%              | 3.0%     | 15.1%   | 38.8% | 42.5%          | 299   | 4.2           |
| Participate in professional interest groups                                 | 1.0%              | 3.4%     | 12.1%   | 40.9% | 42.6%          | 298   | 4.2           |
| Attend professional seminars and colloquia                                  | 1.7%              | 7.7%     | 15.5%   | 36.0% | 39.1%          | 297   | 4             |
| Become familiar with current and emerging technology                        | 1.3%              | 5.4%     | 15.8%   | 41.6% | 35.9%          | 298   | 4.1           |
| Participate in research or creative projects with faculty or other students | 0.7%              | 9.7%     | 20.5%   | 42.6% | 26.5%          | 298   | 3.8           |

| My major is:  |                   |          |         |       |                |       |               |
|---|-------------------|----------|---------|-------|----------------|-------|---------------|
|   | Strongly Disagree | Disagree | Neutral | Argee | Strongly Agree | Count | Average Value |
| Characterized by mutual respect between undergraduate majors and professors | 0.3%              | 2.7%     | 7.4%    | 43.6% | 45.9%          | 296   | 4.3           |
| Academically stimulating  | 0.3%              | 0.7%     | 6.1%    | 38.7% | 54.2%          | 297   | 4.5           |

| In my major:  |                   |          |         |       |                |       |               |
|---|-------------------|----------|---------|-------|----------------|-------|---------------|
|   | Strongly Disagree | Disagree | Neutral | Argee | Strongly Agree | Count | Average Value |
| Faculty are accessible for out-of-class assistance  | 0.7%              | 1.7%     | 6.9%    | 46.5% | 44.1%          | 288   | 4.3           |
| Faculty are effective teachers  | 0.7%              | 2.1%     | 13.8%   | 54.1% | 29.3%          | 290   | 4.1           |
| Faculty are interested in the academic and professional development of students                     | 0.7%              | 2.4%     | 8.3%    | 46.4% | 42.2%          | 289   | 4.3           |
| Faculty introduced students to a broad range of ideas, perspectives, and worldviews                 | 1.7%              | 4.2%     | 17.8%   | 45.1% | 31.1%          | 286   | 4             |
| Faculty are interested in the personal development of students                                      | 1.7%              | 4.2%     | 18.7%   | 44.3% | 31.1%          | 289   | 4             |
| Faculty listen and respond to undergraduates regarding student needs, concerns, and suggestions     | 0.7%              | 3.8%     | 16.0%   | 48.8% | 30.7%          | 287   | 4             |
| Faculty/Advisor provided high-quality advising  | 3.1%              | 8.3%     | 17.6%   | 40.3% | 30.7%          | 290   | 3.9           |
| Faculty/Advisor/Staff provided support in finding appropriate employment or pursuing graduate study | 4.4%              | 6.2%     | 15.8%   | 38.1% | 35.5%          | 273   | 3.9           |



**Sense of belonging:**

|   | 1 - Sense of Alienation | 2    | 3    | 4     | 5     | 6     | 7 - Sense of Belonging | Count | Average Value |
|---|-------------------------|------|------|-------|-------|-------|------------------------|-------|---------------|
| Relationships with other students, student groups, and activities | 0.7%                    | 1.7% | 3.8% | 10.7% | 28.3% | 32.1% | 22.8%                  | 290   | 5.5           |

**Relationships with faculty and staff:**

|  | 1 - Unsympathetic, Remote, Unhelpful | 2    | 3     | 4     | 5     | 6     | 7 - Approachable, Understandable, Helpful | Count | Average Value |
|--|--------------------------------------|------|-------|-------|-------|-------|---|-------|---------------|
| Relationships with faculty members                     | 1.0%                                 | 1.7% | 7.2%  | 7.6%  | 22.1% | 33.4% | 26.9%                                     | 290   | 5.6           |
| Relationships with academic advisor(s)                 | 3.8%                                 | 3.8% | 4.5%  | 15.5% | 20.7% | 20.7% | 31.0%                                     | 290   | 5.3           |
| Relationships with Graduate Teaching Assistants (GTAs) | 5.2%                                 | 8.7% | 11.1% | 27.2% | 22.3% | 14.6% | 10.8%                                     | 287   | 4.4           |

**How often did you interact with faculty outside of class time?**

|              | Count | Percent |
|--------------|-------|---------|
| Never        | 4     | 1.4%    |
| Rarely       | 56    | 19.2%   |
| Occasionally | 137   | 47.1%   |
| Often        | 94    | 32.3%   |
| Total        | 291   | 100.0%  |

**Did you participate in an undergraduate research experience of creative endeavor?**

|       | Count | Percent |
|-------|-------|---------|
| Yes   | 155   | 53.3%   |
| No    | 136   | 46.7%   |
| Total | 291   | 100.0%  |

**How would you rate the contribution of your mentor research/creative experience?**

|            | Count | Percent |
|------------|-------|---------|
| Inadequate | 10    | 6.5%    |
| Fair       | 29    | 18.7%   |
| Good       | 72    | 46.5%   |
| Excellent  | 44    | 28.4%   |
| Total      | 155   | 100.0%  |

**To what extent did your research/creative experience contribute to your academic success?**

|           | Count | Percent |
|-----------|-------|---------|
| None      | 7     | 4.5%    |
| Little    | 29    | 18.7%   |
| Somewhat  | 72    | 46.5%   |
| Very Much | 47    | 30.3%   |
| Total     | 155   | 100.0%  |

**Did your research/creative experience contribute to your career choice?**

|            | Count | Percent |
|------------|-------|---------|
| No         | 53    | 34.2%   |
| Somewhat   | 63    | 40.6%   |
| Definitely | 39    | 25.2%   |
| Total      | 155   | 100.0%  |

**How many semesters were you involved in a research/creative endeavor?**

|           | Count | Percent |
|-----------|-------|---------|
| 2 or less | 87    | 56.1%   |
| 3-4       | 34    | 21.9%   |
| 5-6       | 13    | 8.4%    |
| 7-8       | 17    | 11.0%   |
| 9 or more | 4     | 2.6%    |
| Total     | 155   | 100.0%  |

**What types of dissemination of your undergraduate research/creative endeavor did you successfully achieve? (select all that apply)**

|   | Count | Percent |
|---|-------|---------|
| University research seminar presentation/poster     | 50    | 33.3%   |
| Class presentation                                  | 100   | 66.7%   |
| Poster at a conference outside of campus            | 21    | 14.0%   |
| Oral presentation at a conference outside of campus | 33    | 22.0%   |
| Public performance/exhibition on campus             | 38    | 25.3%   |
| Public performance/exhibition outside of campus     | 31    | 20.7%   |
| Peer reviewed publication                           | 23    | 15.3%   |
| Other:  | 22    | 14.7%   |

| <b>As a result of your experience at Kansas State University, how much progress do you feel you have made in each of the following Undergraduate Learning Outcomes?</b> |       |        |       |       |       |               |
|---|-------|--------|-------|-------|-------|---------------|
|   | None  | Little | Some  | A Lot | Count | Average Value |
| Gained a broad general education about different fields of knowledge  | 0.3%  | 5.8%   | 41.6% | 52.2% | 291   | 3.5           |
| Improved written communication skills   | 0.7%  | 11.7%  | 44.0% | 43.6% | 291   | 3.3           |
| Improved oral communication skills  | 1.4%  | 9.6%   | 42.6% | 46.4% | 291   | 3.3           |
| Improved graphic and technological communication skills.  | 0.7%  | 5.2%   | 38.1% | 56.0% | 291   | 3.5           |
| Improved ability to think critically (analytically and logically).  | 0.7%  | 2.1%   | 25.4% | 71.8% | 291   | 3.7           |
| Developed own values and ethical standards  | 2.7%  | 10.3%  | 43.3% | 43.6% | 291   | 3.3           |
| Understand the ethical standards of your discipline or profession   | 1.0%  | 8.9%   | 37.8% | 52.2% | 291   | 3.4           |
| Ability to interact positively with people who are different from you   | 1.4%  | 4.5%   | 41.2% | 52.9% | 291   | 3.5           |
| Understand your abilities, interests, and personality   | 1.4%  | 4.5%   | 35.7% | 58.4% | 291   | 3.5           |
| Understand other people and their abilities, interests, and perspectives  | 1.4%  | 6.9%   | 53.3% | 38.5% | 291   | 3.3           |
| Ability to participate as a team member   | 1.0%  | 5.5%   | 35.9% | 57.6% | 290   | 3.5           |
| Developed good health habits and physical fitness   | 12.0% | 29.2%  | 36.4% | 22.3% | 291   | 2.7           |

| <b>As a result of your experience at Kansas State University, how much progress do you feel you have made in each of the following K-State 8 areas?</b>   |       |        |       |       |       |               |
|---|-------|--------|-------|-------|-------|---------------|
|   | None  | Little | Some  | A Lot | Count | Average Value |
| Developed interpretive skills and heightened sensitivity to stimulating responses to literature, the performing arts, the visual arts.  | 15.7% | 32.5%  | 39.5% | 12.2% | 286   | 2.5           |
| Developed the ability to gather and evaluate information, weigh alternative evidence, and recognize when available evidence is inadequate to draw a conclusion.                                 | 3.8%  | 8.0%   | 40.4% | 47.7% | 287   | 3.3           |
| Developed the ability to think through ethical dilemmas, make sound decisions when facing real-life situations, and apply ethical standards to social and/or environmental issues.              | 5.2%  | 15.3%  | 47.6% | 31.9% | 288   | 3.1           |
| Made aware of values, perspectives, beliefs, behaviors, policies and customs from around the world  | 6.6%  | 28.1%  | 43.8% | 21.5% | 288   | 2.8           |
| Realized the need to understand the past and thoughtfully consider the future to glimpse how it may continue to develop.  | 6.9%  | 23.6%  | 42.0% | 27.4% | 288   | 2.9           |
| Developed an awareness of self and multiple perspectives about U.S. society and how group affiliation affects people's perceptions and experiences.   | 8.7%  | 25.7%  | 45.8% | 19.8% | 288   | 2.8           |
| Developed the ability to evaluate the merit of scientific and technological claims by using central facts, ideas and theories related to the study of living systems and the physical universe. | 5.6%  | 9.0%   | 40.6% | 44.8% | 288   | 3.2           |
| Understand and analyze how individuals, groups and societies behave and influence on another and the natural environment.   | 8.0%  | 24.3%  | 45.1% | 22.6% | 288   | 2.8           |

**Universities differ from one another in the extent to which they emphasize various aspects of student development. Think of your experience at Kansas State University. To what extent was each of the following emphasized?**

|  | 1    | 2    | 3     | 4     | 5     | 6     | 7     | Count | Average Value |
|--|------|------|-------|-------|-------|-------|-------|-------|---------------|
| The development of academic, scholarly, and intellectual qualities | 1.0% | 0.3% | 2.4%  | 6.2%  | 21.1% | 41.5% | 27.3% | 1798  | 5.7           |
| The development of aesthetic, expressive, and creative qualities   | 2.1% | 6.9% | 12.8% | 21.5% | 29.8% | 20.4% | 6.6%  | 1798  | 5             |
| Being critical, evaluative, and analytical                         | 0.7% | 0.3% | 2.1%  | 6.2%  | 14.2% | 43.6% | 32.9% | 1797  | 5.8           |
| The development of vocational and occupational competence          | 1.0% | 1.7% | 5.9%  | 10.4% | 25.6% | 33.9% | 21.5% | 1799  | 5.4           |
| The personal relevance and practical value of your courses         | 1.4% | 2.8% | 4.2%  | 14.2% | 23.5% | 37.4% | 16.6% | 1798  | 5.5           |

**What are your plans after graduation?**

|  | Count | %     |
|--|-------|-------|
| Have a job that will continue after graduation   | 26    | 8.9%  |
| Have a job lined up to begin after graduation    | 187   | 64.3% |
| Will begin to look for a job                     | 35    | 12.0% |
| Pursue additional undergraduate education        |       | 0.0%  |
| Will attend graduate school                      | 33    | 11.3% |
| Volunteer service (Peace Corps, Americorp, etc.) |       | 0.0%  |
| No plans for a job at this time                  | 1     | 0.3%  |
| Military   | 3     | 1.0%  |
| Starting or raising a family                     | 2     | 0.7%  |
| Other  | 4     | 1.4%  |