

**Responses for this report only include seniors within the college, except where noted.*

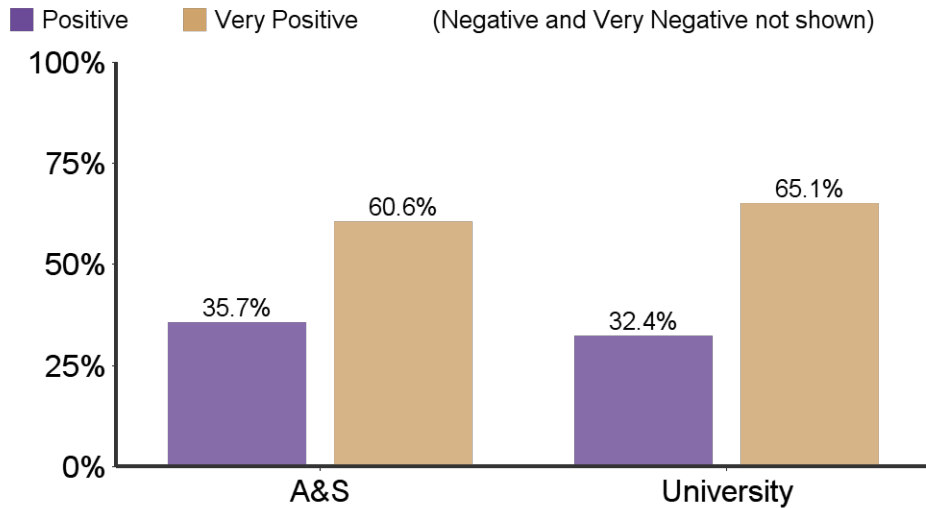
	Arts and Sciences	University
Responses	592	2022
Initial Population	1220	3643
Response Rate	48.5%	55.5%

Survey Information:

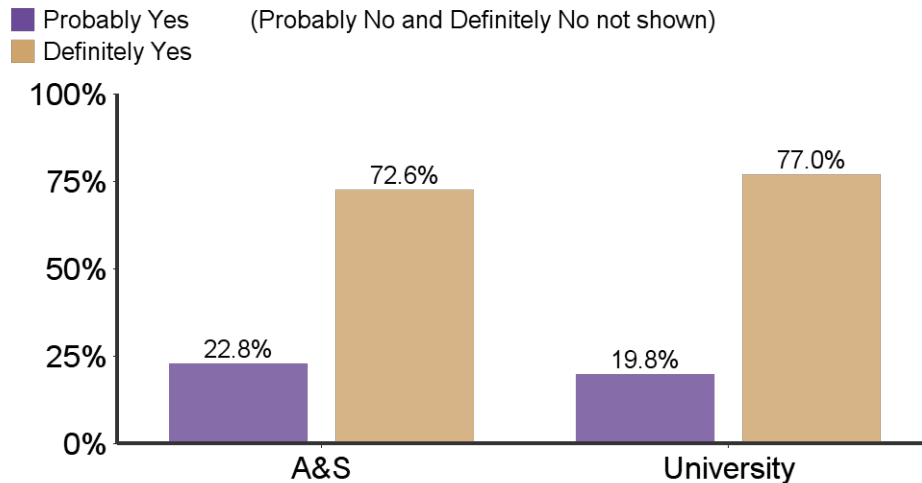
- The Senior Survey is designed to give undergraduate students the opportunity to reflect upon their K-State experiences. This information is used to improve the college experience for future students by identifying strengths in our programs as well as areas that need further development. The survey includes issues relating to satisfaction with K-State regarding academic programs, intellectual and personal growth, student services, and preparation for a career or a graduate/professional school.
- The survey is offered electronically (through Qualtrics) to seniors who have been cleared for graduation by their respective colleges.
- The 2013-14 was administered to 3643 seniors expected to graduate in summer 2013, fall 2013, and spring 2014. It was offered to summer and fall graduates 12/2/13 to 1/15/14 and to spring graduates 4/28/14 to 6/6/14.

Table of Contents	
Introduction	1
Section I: Overall Satisfaction	2
Section II: Future Plans	3
Section IIIa: 2025--Undergraduate Educational Experience	4
Section IIIb: 2025--Research, Scholarly, Creative Activity Discovery	6
Section IIIc: 2025--Faculty and Staff	9
Section IV: Demographics	11
Section V: Results Tables	13

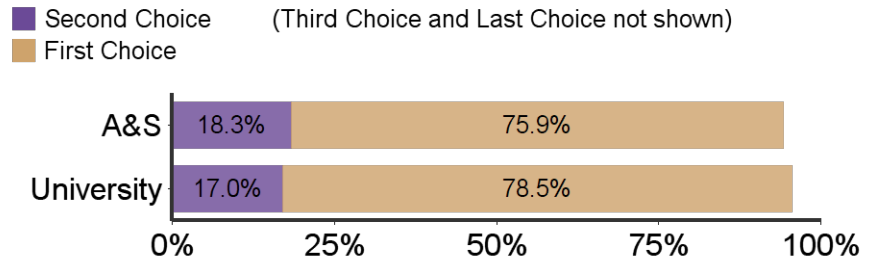
What is your general attitude toward K-State?



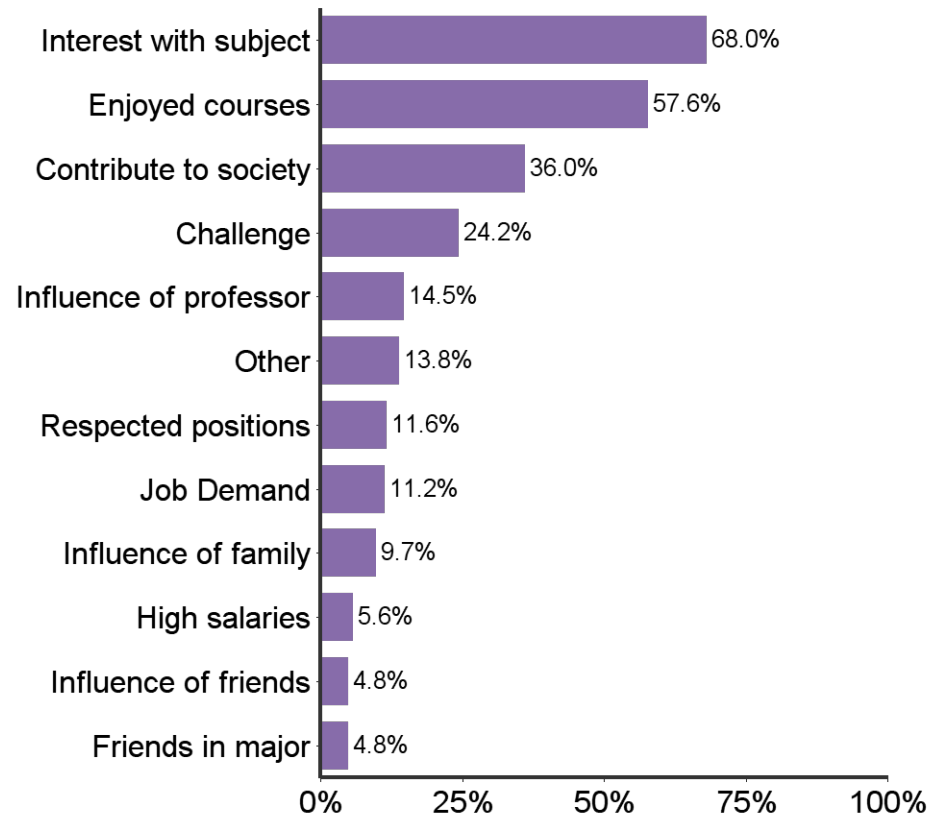
Would you recommend K-State to others?



When you applied to K-State, it was your:

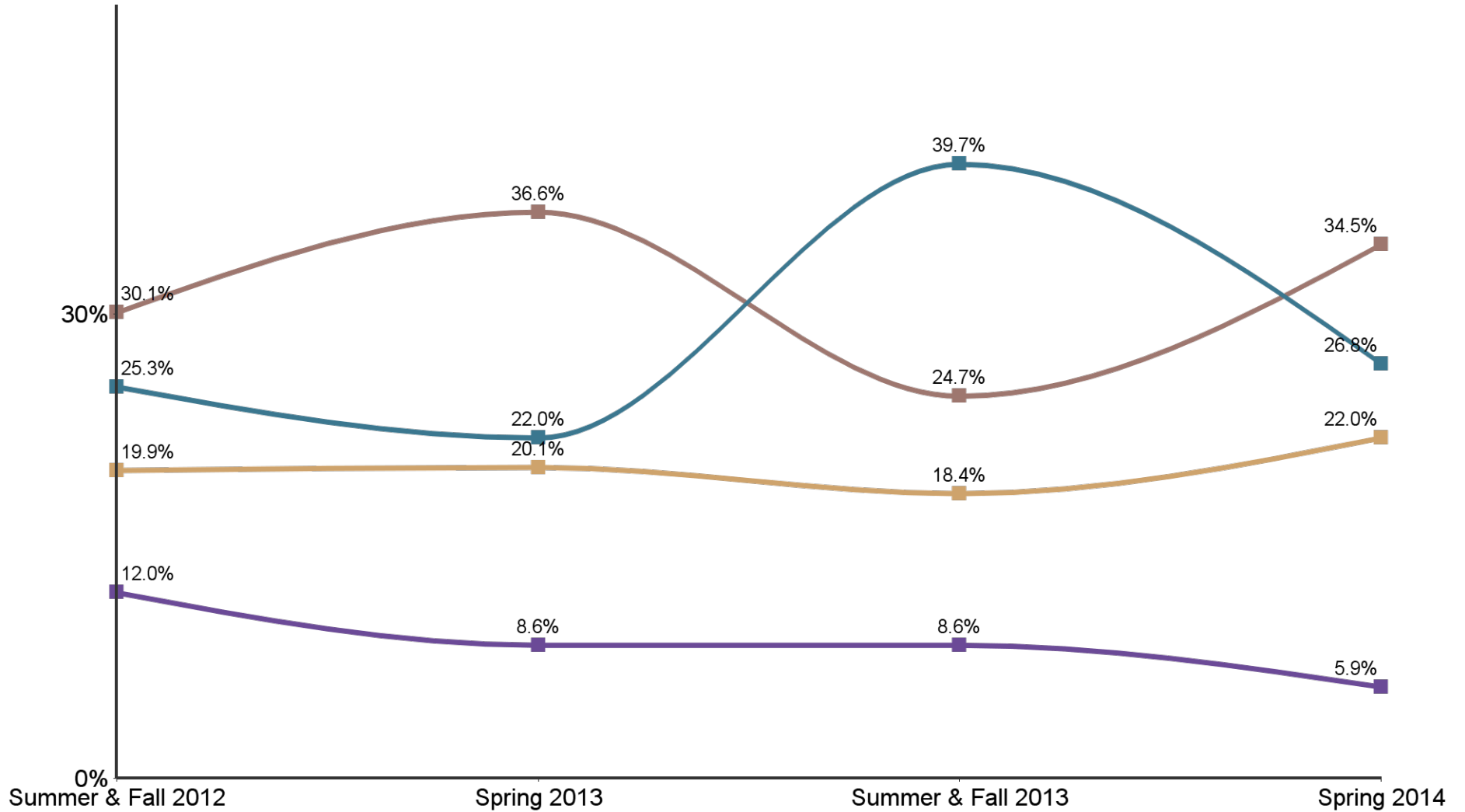


Reasons for choosing major

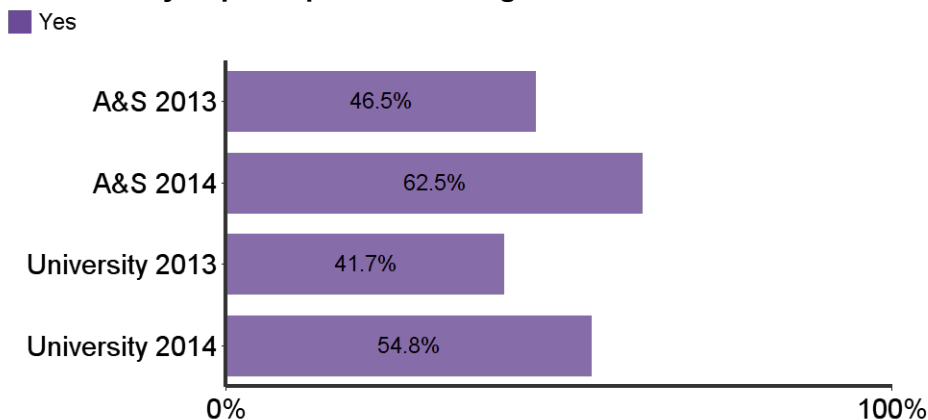


**What are your plans after graduation?
(selected results by semester)**

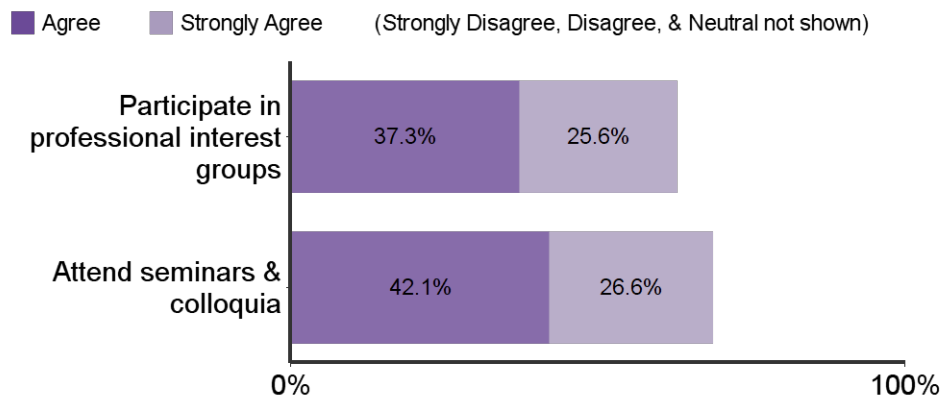
■ Have a job that will continue after graduation
 ■ Have a job lined up to begin after graduation
 ■ Will begin to look for a job
 ■ Will attend graduate school



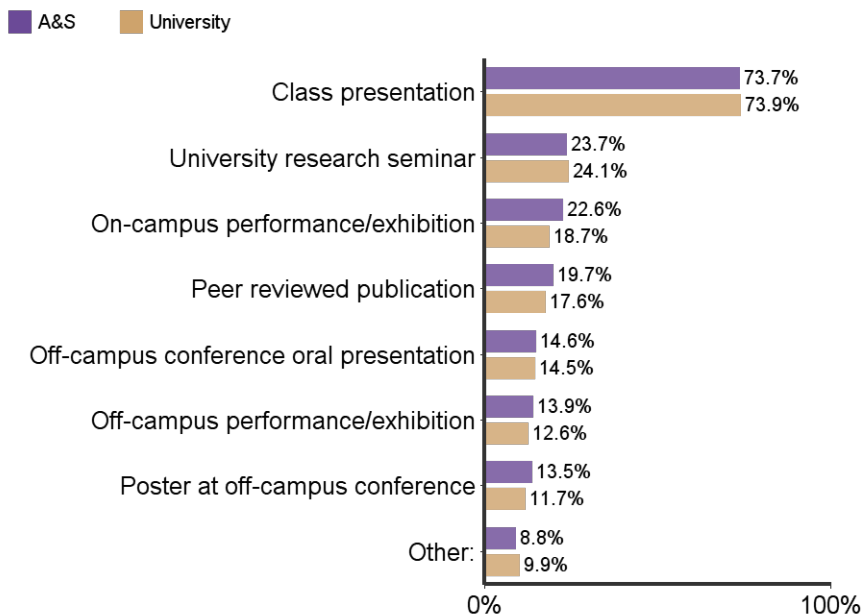
Have you participated in undergraduate research?



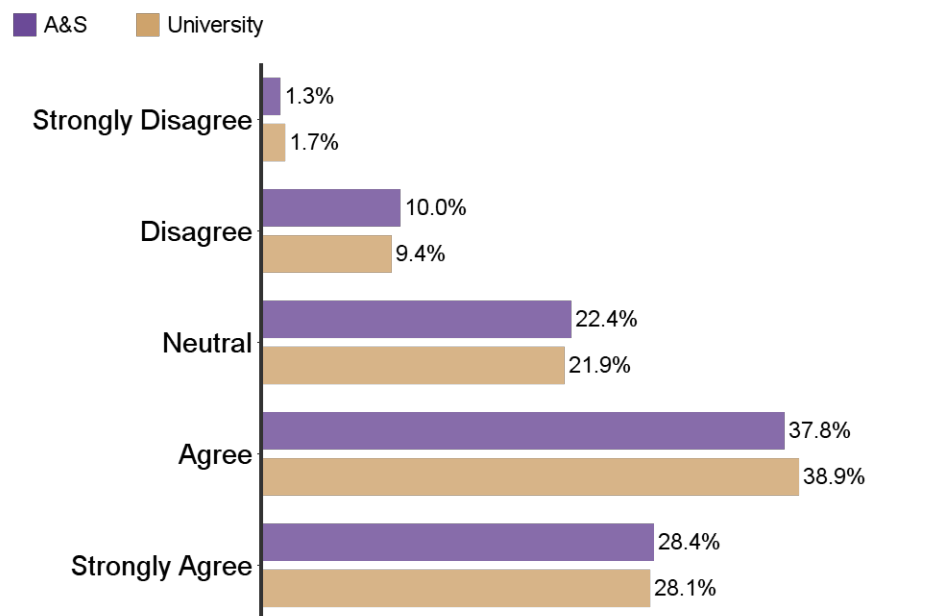
Students in my major are encouraged to:



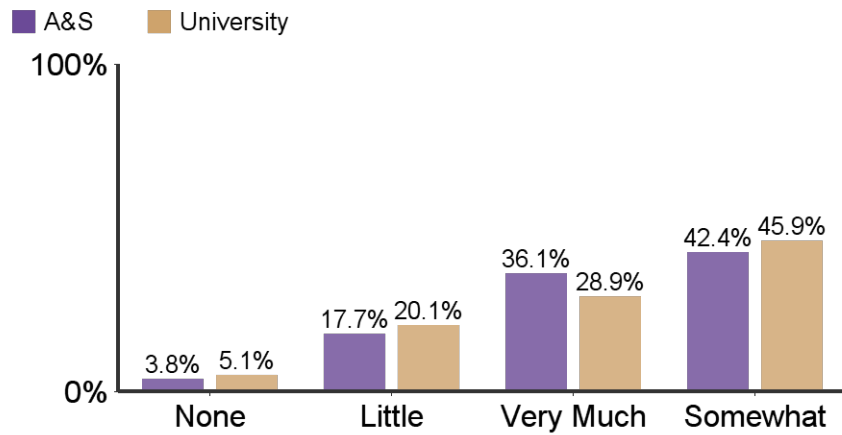
What type(s) of research dissemination have you successfully achieved?



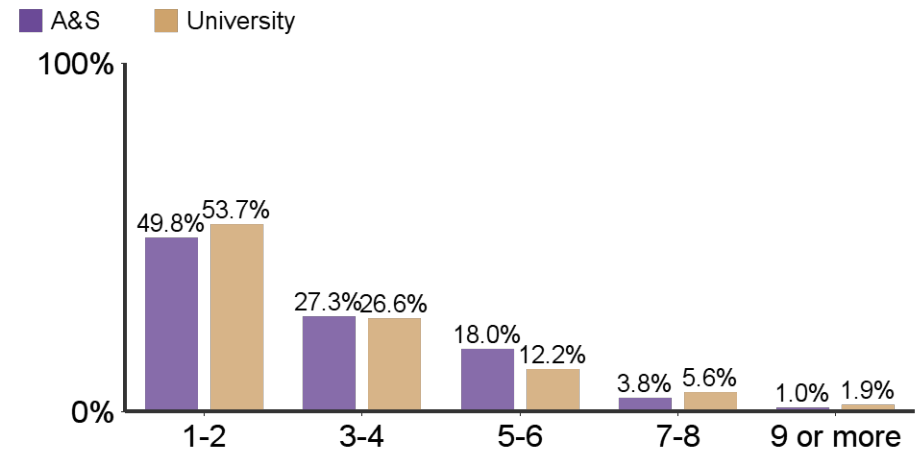
Students in my major are encouraged to participate in research/creative projects:



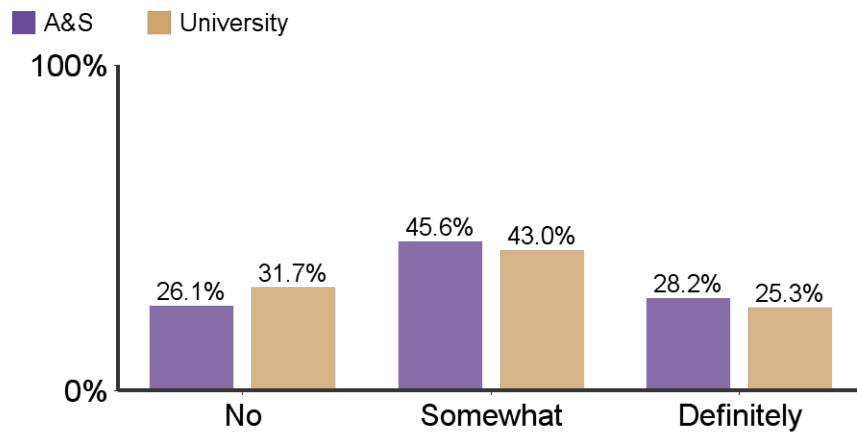
To what extent did your research experience contribute to your academic success?



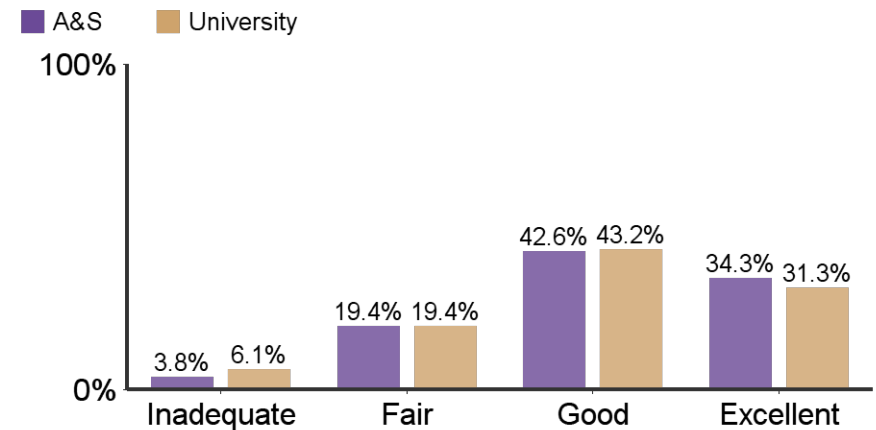
Number of semesters involved in a research or creative endeavor:



Did your research experience contribute to your career choice?

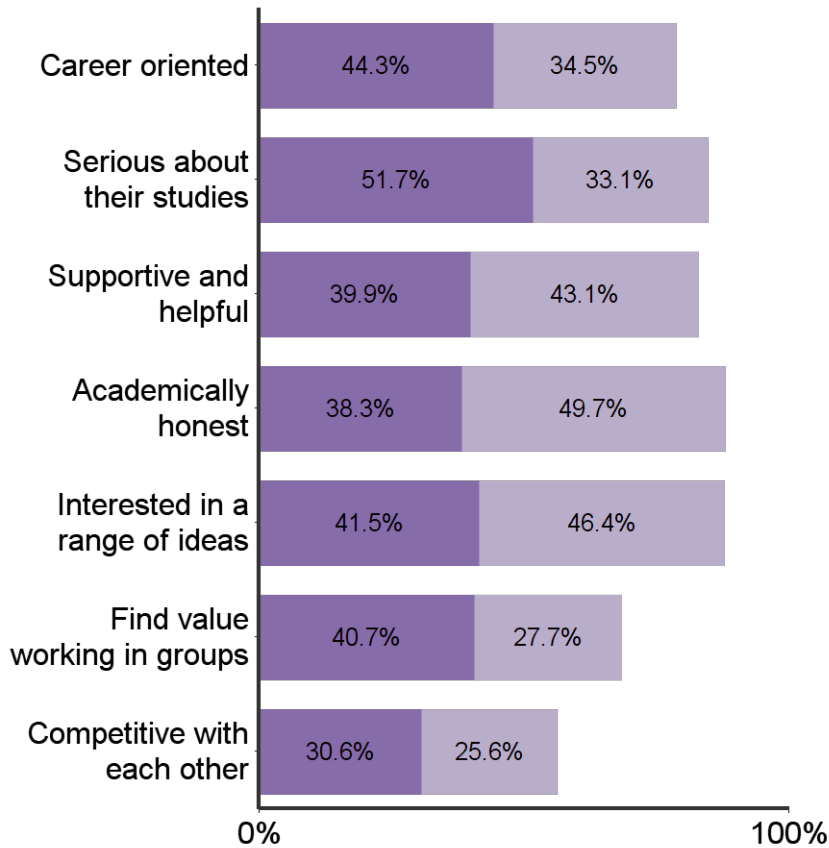


How would you rate the contribution of your mentor to your research?



Students in my major are:

■ Agree (Strongly Disagree, Disagree, & Neutral not shown)
■ Strongly Agree



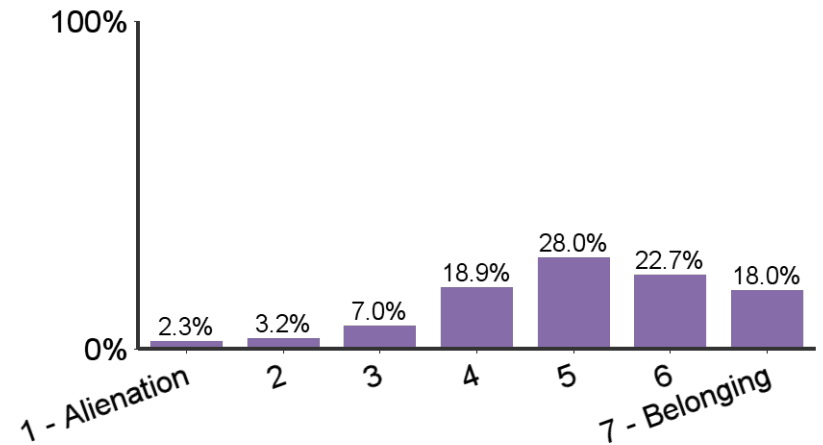
I found my major to be:

■ Agree (Strongly Disagree, Disagree, & Neutral not shown)
■ Strongly Agree



Sense of belonging with other students:

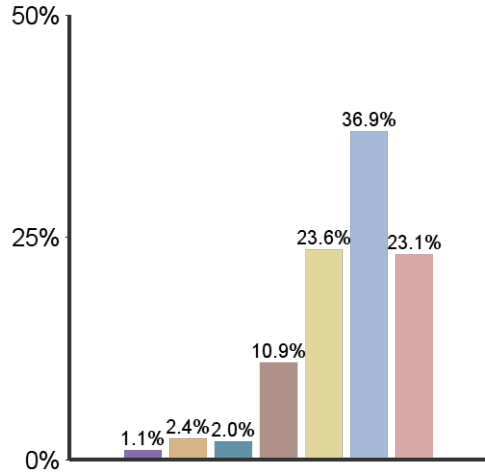
■ Relationships with other students, student groups, and activities



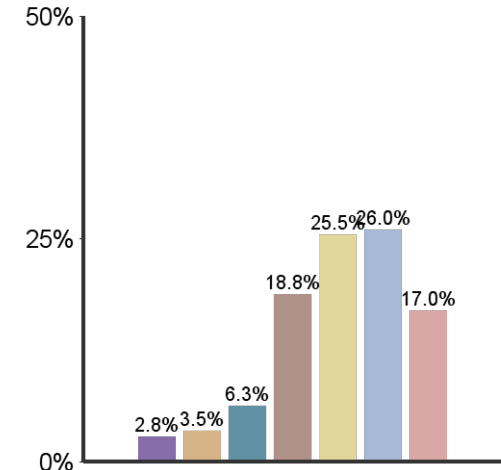
Emphasis K-State placed on the following:



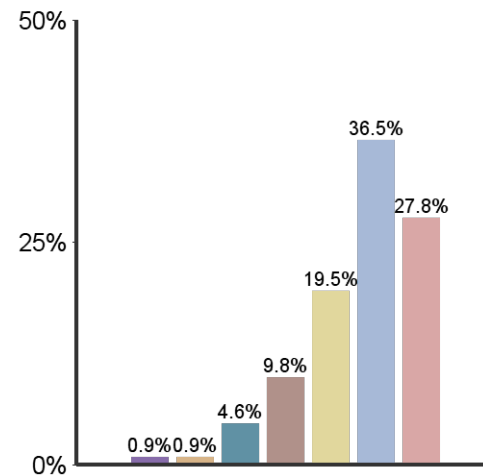
Academic & Scholarly Qualities



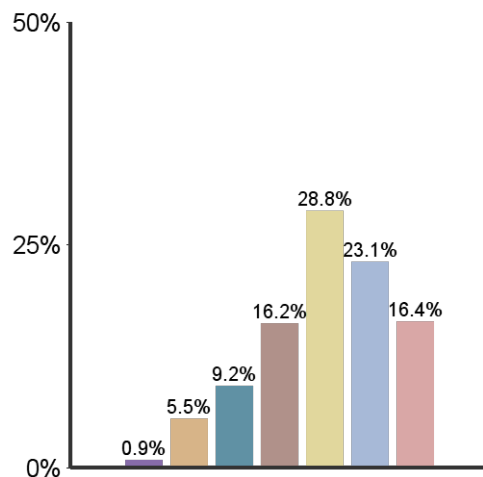
Vocational and occupational competence



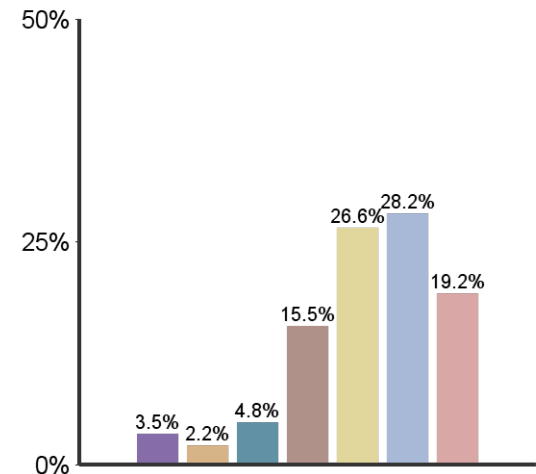
Being critical, evaluative, and analytical



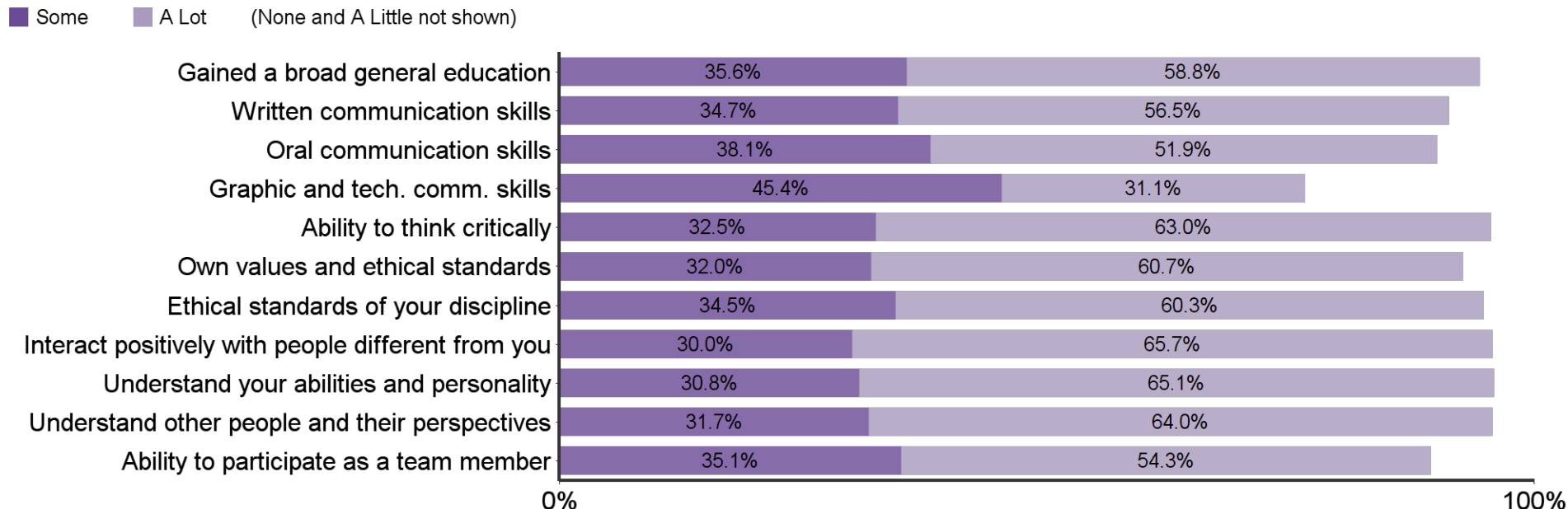
Aesthetic, expressive, & creative qualities



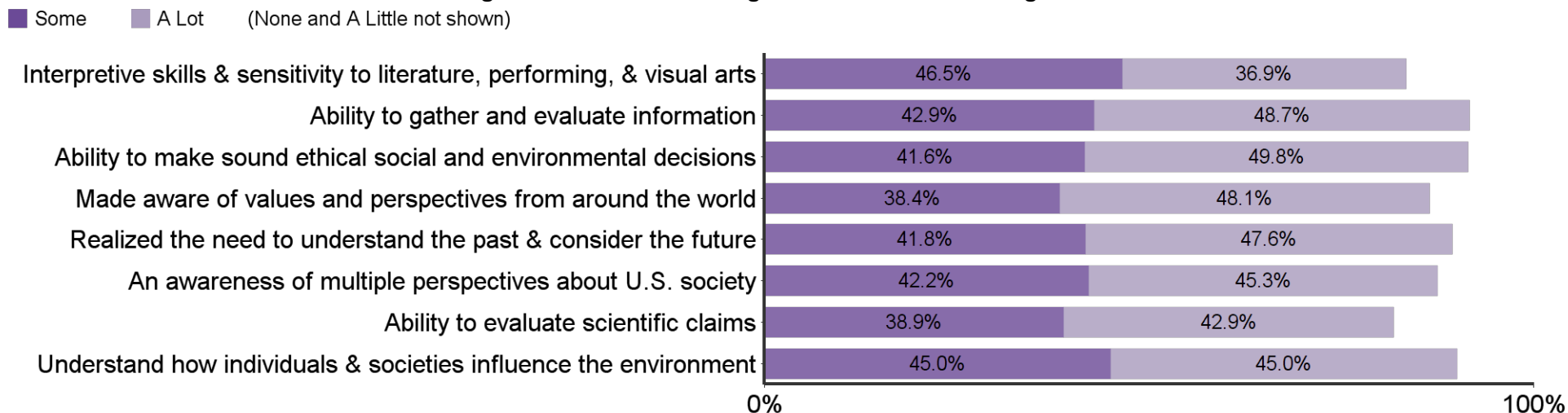
Personal relevance & practical value



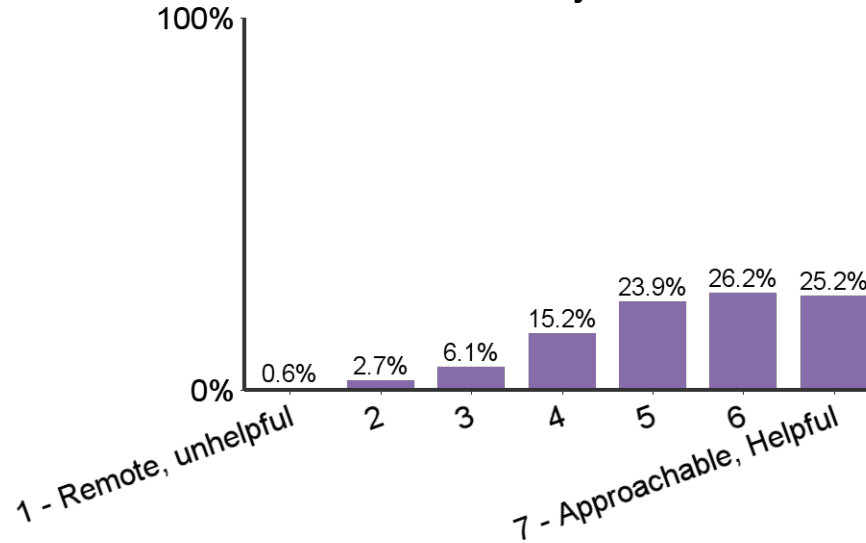
Progress made in K-State undergraduate learning outcomes:



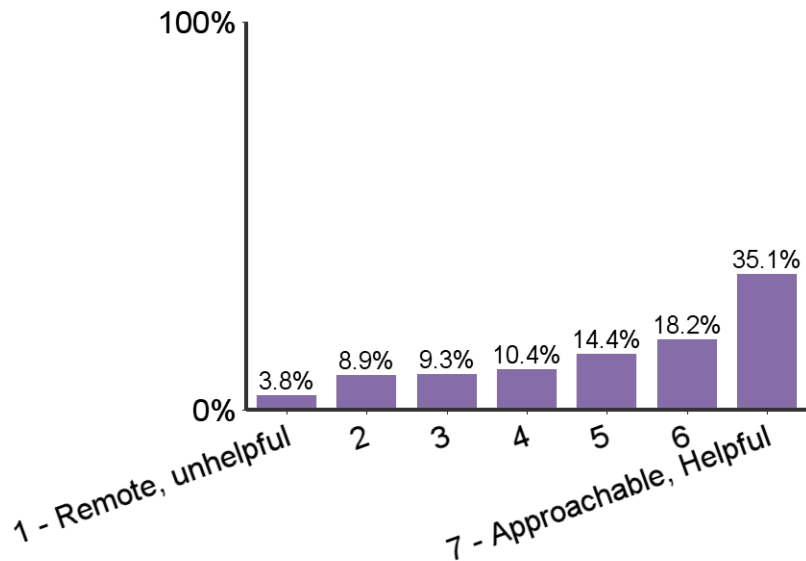
Progress made in K-State 8 general education learning outcomes



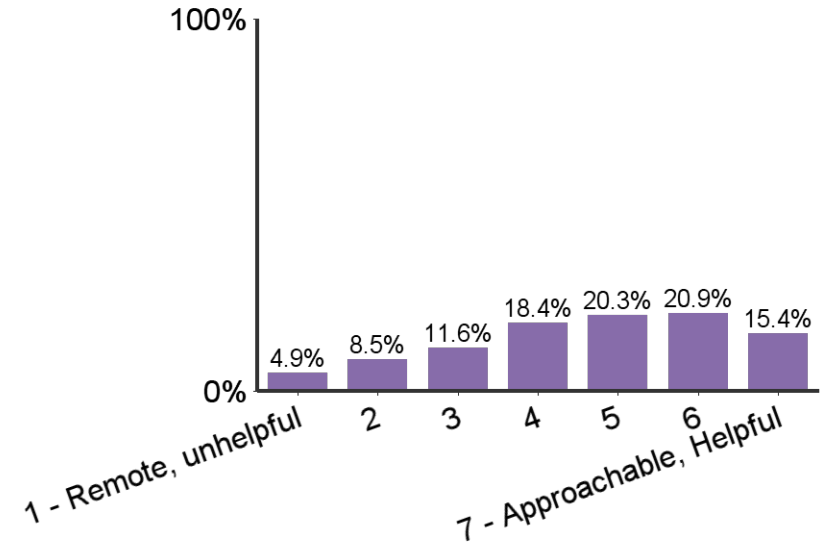
Sense of relationships with faculty:



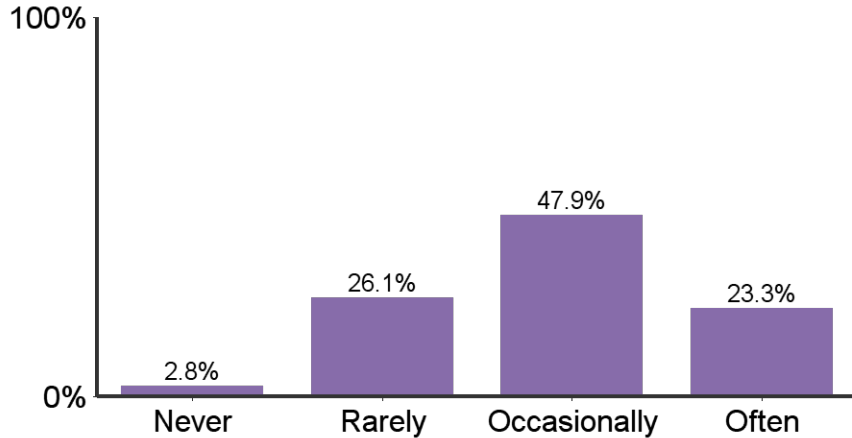
Sense of relationships with academic advisors:



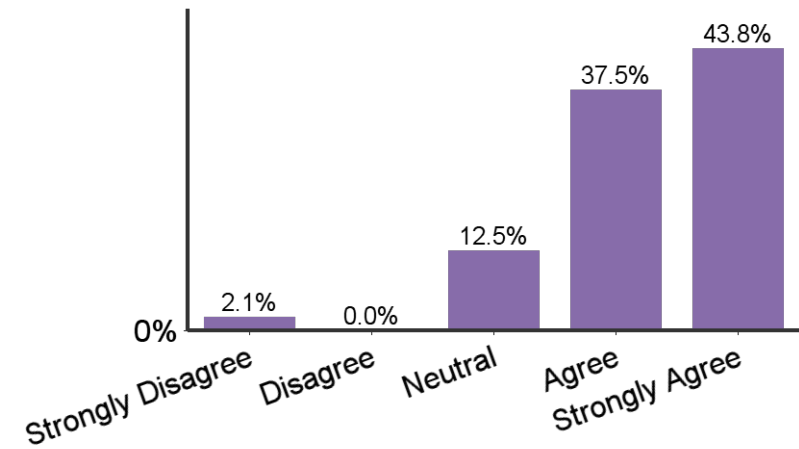
Sense of relationships with GTAs:



How often did you interact with faculty outside of class time?

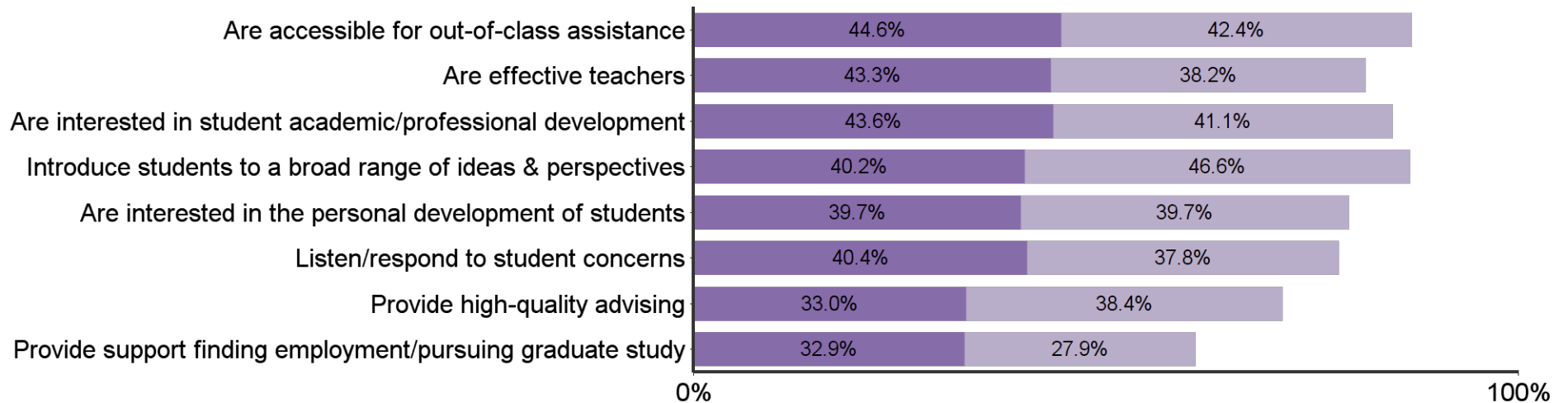


I found my major to be characterized by mutual respect between undergraduates and professors



In my major, faculty:

■ Agree
 ■ Strongly Agree
 (Strongly Disagree, Disagree, & Neutral not shown)



Responses by Major

	Bar	Percent	Count
Mass Communication		12.1%	64
Psychology		9.4%	50
Social Sciences		8.5%	45
Fine Arts		7.5%	40
Life Sciences		6.4%	34
Biology		6.2%	33
Sociology		6.0%	32
History		5.3%	28
Political Science		4.7%	25
Economics		3.8%	20
Social Work		3.6%	19
English		2.4%	13
Geography		2.3%	12
Communication Studies		2.1%	11
Theatre		2.1%	11
Biochemistry		2.1%	11
Music Education		1.9%	10
Mathematics		1.9%	10
Anthropology		1.9%	10
Fishr, Wlife & Conser Bio		1.9%	10
Modern Languages		1.5%	8
Geology		1.3%	7
Microbiology		1.1%	6
Chemistry		0.8%	4
Art		0.8%	4
Humanities		0.6%	3
Physics		0.6%	3
Applied Music		0.4%	2
Clinical Lab Sci-Med Tech		0.4%	2
Music		0.4%	2
Women's Studies		0.2%	1
Philosophy		0.2%	1
Total	-	100.0%	531

Responses by Gender



	Bar	Percent	Count
Female		59.5%	316
Male		40.5%	215

Responses by Race/Ethnicity

	Bar	Percent	Count
WHITE		82.5%	438
HISPANIC		5.6%	30
BLACK		3.6%	19
ASIAN		3.0%	16
MULTIRAC		2.6%	14
NOTSPEC		2.1%	11
AMERIND		0.4%	2
HAWPACI		0.2%	1

Responses by Semester

	Bar	Percent	Count
Spring		62.3%	331
Fall		34.1%	181
Summer		3.6%	19

Responses by Citizenship Status			
	Bar	Percent	Count
USA		97.2%	516
Non-Citizen		1.1%	6

Credit Hours Transferred to K-State	
	Mean
Transfer Credit Hours	26.8

K-State Undergraduate GPA of Respondents	
	Mean
GPA	3.2

Age of Respondents	
	Mean
Age	23.5

What were your reasons for choosing your major? (select all that apply)		
	Count	%
Interesting subject	363	70.3%
Interest with subject	351	68.0%
Enjoyed courses in the field	297	57.6%
Meaningful contribution to society	186	36.0%
Challenge	125	24.2%
Influence of professor	75	14.5%
Other	71	13.8%
Respected positions	60	11.6%
Job Demand	58	11.2%
Influence of family	50	9.7%
High salaries	29	5.6%
Influence of friends	25	4.8%
Friends in major	25	4.8%

How many of your K-State courses included a service-learning component?		
	Count	%
None	227	44.0%
Some	272	52.7%
Most	15	2.9%
All	2	0.4%

What percentage of your courses did you take online at K-State?		
	Count	%
None	194	37.7%
1%-25%	304	59.0%
26%-50%	10	1.9%
51%-75%	3	0.6%
76%-99%	1	0.2%
100%	3	0.6%

During your years at Kansas State University, how many hours per week, on average, did you spend in the following activities?							
	None	1-5	6-10	11-15	16-20	21-30	30+
Internship/Practicum	50.8%	17.9%	6.3%	6.5%	3.4%	1.8%	6.5%
On-campus employment	43.1%	9.0%	9.4%	11.8%	11.4%	10.4%	4.8%
Off-campus employment	38.0%	8.0%	8.6%	9.6%	12.4%	12.0%	11.2%
Volunteer (unpaid) activities	29.3%	40.4%	14.1%	7.9%	3.8%	2.0%	2.6%

What is your general attitude toward K-State?		
	Count	Percent
Very Negative	1	0.2%
Negative	18	3.5%
Positive	184	35.7%
Very Positive	312	60.6%
Total	515	100.0%

When you applied to K-State it was your:		
	Count	Percent
First Choice	391	75.9%
Second Choice	94	18.3%
Third Choice	15	2.9%
Last Choice	15	2.9%
Total	515	100.0%

Would you recommend K-State to others?		
	Count	Percent
Definitely No	2	0.4%
Probably No	22	4.3%
Probably Yes	117	22.8%
Definitely Yes	373	72.6%
Total	514	100.0%

Students in my major are:							
	Strongly Disagree	Disagree	Neutral	Argee	Strongly Agree	Count	Average Value
Career oriented	0.4%	4.9%	15.9%	44.3%	34.5%	472	4.1
Serious about their studies	0.0%	2.3%	12.9%	51.7%	33.1%	474	4.2
Supportive and helpful to each other in meeting the academic demands of the program	0.2%	2.5%	14.2%	39.9%	43.1%	471	4.2
Academically honest (do not cheat, plagiarize)	0.4%	2.6%	9.0%	38.3%	49.7%	465	4.3
Interested in a broad range of ideas from many disciplines	0.0%	3.8%	8.3%	41.5%	46.4%	468	4.3
Find value working in groups	2.2%	9.3%	20.1%	40.7%	27.7%	452	3.8
Competitive with each other	0.9%	13.4%	29.5%	30.6%	25.6%	454	3.7

Students in my major are encouraged to:							
	Strongly Disagree	Disagree	Neutral	Argee	Strongly Agree	Count	Average Value
Become personally acquainted with the department's faculty	1.0%	7.1%	16.3%	41.0%	34.6%	480	4
Participate in professional interest groups	1.1%	13.2%	22.8%	37.3%	25.6%	461	3.7
Attend professional seminars and colloquia	1.5%	12.2%	17.6%	42.1%	26.6%	466	3.8
Become familiar with current and emerging technology	2.1%	11.3%	24.1%	38.9%	23.5%	468	3.7
Participate in research or creative projects with faculty or other students	1.3%	10.0%	22.4%	37.8%	28.4%	468	3.8

My major is:							
	Strongly Disagree	Disagree	Neutral	Argee	Strongly Agree	Count	Average Value
Characterized by mutual respect between undergraduate majors and professors	0.8%	3.5%	12.9%	40.8%	41.9%	480	4.2
Academically stimulating	1.0%	2.7%	8.9%	39.8%	47.6%	483	4.3

In my major:							
	Strongly Disagree	Disagree	Neutral	Argee	Strongly Agree	Count	Average Value
Faculty are accessible for out-of-class assistance	0.0%	2.6%	10.4%	44.6%	42.4%	469	4.3
Faculty are effective teachers	0.6%	4.3%	13.6%	43.3%	38.2%	469	4.1
Faculty are interested in the academic and professional development of students	0.4%	3.6%	11.3%	43.6%	41.1%	470	4.2
Faculty introduced students to a broad range of ideas, perspectives, and worldviews	0.2%	3.0%	10.0%	40.2%	46.6%	470	4.3
Faculty are interested in the personal development of students	0.6%	6.4%	13.5%	39.7%	39.7%	466	4.1
Faculty listen and respond to undergraduates regarding student needs, concerns, and suggestions	1.7%	5.0%	15.1%	40.4%	37.8%	463	4.1
Faculty/Advisor provided high-quality advising	7.0%	11.3%	10.2%	33.0%	38.4%	469	3.8
Faculty/Advisor/Staff provided support in finding appropriate employment or pursuing graduate study	10.4%	11.9%	16.9%	32.9%	27.9%	444	3.6

Sense of belonging:

	1 - Sense of Alienation	2	3	4	5	6	7 - Sense of Belonging	Count	Average Value
Relationships with other students, student groups, and activities	2.3%	3.2%	7.0%	18.9%	28.0%	22.7%	18.0%	472	5.1

Relationships with faculty and staff:

	1 - Unsympathetic, Remote, Unhelpful	2	3	4	5	6	7 - Approachable, Understandable, Helpful	Count	Average Value
Relationships with faculty members	0.6%	2.7%	6.1%	15.2%	23.9%	26.2%	25.2%	473	5.4
Relationships with academic advisor(s)	3.8%	8.9%	9.3%	10.4%	14.4%	18.2%	35.1%	473	5.2
Relationships with Graduate Teaching Assistants (GTAs)	4.9%	8.5%	11.6%	18.4%	20.3%	20.9%	15.4%	473	4.7

How often did you interact with faculty outside of class time?

	Count	Percent
Never	13	2.8%
Rarely	123	26.1%
Occasionally	226	47.9%
Often	110	23.3%
Total	472	100.0%

Did you participate in an undergraduate research experience of creative endeavor?

	Count	Percent
Yes	293	62.5%
No	176	37.5%
Total	469	100.0%

How would you rate the contribution of your mentor research/creative experience?

	Count	Percent
Inadequate	11	3.8%
Fair	56	19.4%
Good	123	42.6%
Excellent	99	34.3%
Total	289	100.0%

To what extent did your research/creative experience contribute to your academic success?

	Count	Percent
None	11	3.8%
Little	51	17.7%
Somewhat	122	42.4%
Very Much	104	36.1%
Total	288	100.0%

Did your research/creative experience contribute to your career choice?

	Count	Percent
No	75	26.1%
Somewhat	131	45.6%
Definitely	81	28.2%
Total	287	100.0%

How many semesters were you involved in a research/creative endeavor?

	Count	Percent
2 or less	144	49.8%
3-4	79	27.3%
5-6	52	18.0%
7-8	11	3.8%
9 or more	3	1.0%
Total	289	100.0%

What types of dissemination of your undergraduate research/creative endeavor did you successfully achieve? (select all that apply)

	Count	Percent
University research seminar presentation/poster	65	23.7%
Class presentation	202	73.7%
Poster at a conference outside of campus	37	13.5%
Oral presentation at a conference outside of campus	40	14.6%
Public performance/exhibition on campus	62	22.6%
Public performance/exhibition outside of campus	38	13.9%
Peer reviewed publication	54	19.7%
Other:	24	8.8%

As a result of your experience at Kansas State University, how much progress do you feel you have made in each of the following Undergraduate Learning Outcomes?						
	None	Little	Some	A Lot	Count	Average Value
Gained a broad general education about different fields of knowledge	0.4%	5.2%	35.6%	58.8%	464	3.5
Improved written communication skills	1.7%	7.1%	34.7%	56.5%	464	3.5
Improved oral communication skills	1.7%	8.2%	38.1%	51.9%	464	3.4
Improved graphic and technological communication skills.	5.2%	18.4%	45.4%	31.1%	463	3
Improved ability to think critically (analytically and logically).	0.6%	3.9%	32.5%	63.0%	462	3.6
Developed own values and ethical standards	1.1%	6.3%	32.0%	60.7%	463	3.5
Understand the ethical standards of your discipline or profession	0.9%	4.3%	34.5%	60.3%	464	3.5
Ability to interact positively with people who are different from you	0.6%	3.7%	30.0%	65.7%	464	3.6
Understand your abilities, interests, and personality	0.6%	3.4%	30.8%	65.1%	464	3.6
Understand other people and their abilities, interests, and perspectives	0.6%	3.7%	31.7%	64.0%	464	3.6
Ability to participate as a team member	1.1%	9.5%	35.1%	54.3%	462	3.4
Developed good health habits and physical fitness	8.6%	23.7%	36.9%	30.8%	464	2.9

As a result of your experience at Kansas State University, how much progress do you feel you have made in each of the following K-State 8 areas?						
	None	Little	Some	A Lot	Count	Average Value
Developed interpretive skills and heightened sensitivity to stimulating responses to literature, the performing arts, the visual arts.	2.2%	14.4%	46.5%	36.9%	452	3.2
Developed the ability to gather and evaluate information, weigh alternative evidence, and recognize when available evidence is inadequate to draw a conclusion.	0.9%	7.5%	42.9%	48.7%	452	3.4
Developed the ability to think through ethical dilemmas, make sound decisions when facing real-life situations, and apply ethical standards to social and/or environmental issues.	1.1%	7.5%	41.6%	49.8%	452	3.4
Made aware of values, perspectives, beliefs, behaviors, policies and customs from around the world	1.1%	12.4%	38.4%	48.1%	451	3.3
Realized the need to understand the past and thoughtfully consider the future to glimpse how it may continue to develop.	1.5%	9.1%	41.8%	47.6%	452	3.4
Developed an awareness of self and multiple perspectives about U.S. society and how group affiliation affects people's perceptions and experiences.	1.6%	10.9%	42.2%	45.3%	450	3.3
Developed the ability to evaluate the merit of scientific and technological claims by using central facts, ideas and theories related to the study of living systems and the physical universe.	2.0%	16.2%	38.9%	42.9%	452	3.2
Understand and analyze how individuals, groups and societies behave and influence on another and the natural environment.	1.3%	8.6%	45.0%	45.0%	451	3.3

Universities differ from one another in the extent to which they emphasize various aspects of student development. Think of your experience at Kansas State University. To what extent was each of the following emphasized?

	1	2	3	4	5	6	7	Count	Average Value
The development of academic, scholarly, and intellectual qualities	1.1%	2.4%	2.0%	10.9%	23.6%	36.9%	23.1%	1798	5.7
The development of aesthetic, expressive, and creative qualities	0.9%	5.5%	9.2%	16.2%	28.8%	23.1%	16.4%	1798	5
Being critical, evaluative, and analytical	0.9%	0.9%	4.6%	9.8%	19.5%	36.5%	27.8%	1797	5.8
The development of vocational and occupational competence	2.8%	3.5%	6.3%	18.8%	25.5%	26.0%	17.0%	1799	5.4
The personal relevance and practical value of your courses	3.5%	2.2%	4.8%	15.5%	26.6%	28.2%	19.2%	1798	5.5

What are your plans after graduation?

	Count	%
Have a job that will continue after graduation	32	6.9%
Have a job lined up to begin after graduation	95	20.6%
Will begin to look for a job	146	31.7%
Pursue additional undergraduate education	11	2.4%
Will attend graduate school	142	30.8%
Volunteer service (Peace Corps, Americorp, etc.)	6	1.3%
No plans for a job at this time	2	0.4%
Military	6	1.3%
Starting or raising a family	6	1.3%
Other	15	3.3%