



THIS IS KANSAS STATE UNIVERSITY

2025-2026
UNDERGRADUATE VIEWBOOK

#1

BEST COLLEGE CAMPUS IN KANSAS

Niche.com, 2025

Our main campus encompasses more than 2,300 acres, including agricultural and research facilities. The campus is located in the city of Manhattan, which has a population of more than 50,000.



Fast Facts

From our vibrant student body to small class sizes to an exciting range of activities, K-State is the perfect place for Wildcats to learn and thrive.

- **Total enrollment:** 20,295
 - Undergraduate: 15,650
 - Graduate: 4,152
- **First-time freshman:** 3,493
- **First-time transfer:** 1,268
- **New graduate student:** ... 1,273
- **Online:** 3,168
- **In-state** 67%
- **Out-of-state:** 33%
- **Student-to-faculty ratio:** 18:1
- **Retention rate:** 85.5%
- **4-yr graduation rate:** 53.9%
- **6-yr graduation rate:** 71.2%

More than \$96 million awarded in scholarships (2023-24).

79% of students receive some form financial aid.

96% of new grads are employed or enrolled in graduate school within six months of graduation.

Scan the QR code to take a virtual tour of campus.



ACADEMIC OPTIONS

DISCOVER YOUR PATH.

At K-State, you are at the center of everything. Explore 250+ academic programs designed to ignite your curiosity and fuel your passion. From hands-on learning to career-building internships to research opportunities, here is where your future will grow. Begin your journey today!

250+
**ACADEMIC
OPTIONS**

Tell us your dream, and we'll help you follow it.

 k-state.edu/academics



A

Accounting
Addiction counseling
Advertising and public relations
Agribusiness
Agricultural and natural resources communications
Agricultural economics
Agricultural education ^
Agriculture, general ^
Agronomy ^
Animal sciences and industry ^
Anthropology
Architectural engineering # ^
Architecture *
Art
Athletic training and rehabilitation sciences

B

Bakery science and management ^
Biochemistry ^
Biological systems engineering # ^
Biology ^
Biomedical engineering #
Business administration

C

Chemical engineering # ^
Chemistry ^
Civil engineering # ^
Communication sciences and disorders
Communication studies
Computer engineering # ^
Computer science ^
Construction science and management #
Criminology
Cybersecurity #

D

Dietetics
Digital innovation in media

E

Early childhood education
Economics
Educational studies
Education, elementary
Education, secondary
Electrical engineering # ^

Engineering technology management # ^
English
Engineering, general #
Entomology ^
Entrepreneurship and innovation
Environmental design *
Environmental engineering # ^
Environmental science ^

F

Family and consumer sciences education
Fashion studies
Feed and pet food science
Finance
Fisheries, wildlife, conservation and environmental biology ^
Food science and industry
French

G

Geographic information science and technology ^
Geography ^
Geology ^
German

H

Health and human sciences, general
History
Horticulture ^
Hospitality management
Human development and family science
Humanities

I

Industrial design *
Industrial engineering # ^
Integrated computer science ^
Integrative human sciences
Integrative physiology ^
Interior architecture *
Interior design *

K

Kinesiology

L

Landscape architecture *
Life science

M

Management
Management information systems ^
Marketing
Mathematics ^
Mechanical engineering # ^
Medical laboratory science ^
Microbiology ^
Milling science and management
Music +
Music education +

N

News and sports media
Nuclear engineering #
Nutrition and health
Nutritional sciences ^

O

Operations and supply chain management

P

Park management and conservation
Personal financial planning
Philosophy
Physical science ^
Physics ^
Political science
Professional strategic selling
Psychology
Public health

R

Real estate and community development
Regional and community planning *

S

Social science

Social transformation studies
Social work
Sociology
Spanish
Sports nutrition
Statistics and data science ^

T

Theatre

W

Wildlife and outdoor enterprise management ^

PRE-PROFESSIONAL PROGRAMS

Pre-Chiropractic medicine
Pre-Dentistry
Pre-Health information management
Pre-Law
Pre-Medicine
Pre-Nursing
Pre-Occupational therapy
Pre-Optometry
Pre-Pharmacy
Pre-Physical therapy
Pre-Physician assistant
Pre-Respiratory therapy
Pre-Veterinary medicine

ADDITIONAL OPTIONS

K-State has even more options available to you.

Online programs
online.k-state.edu

Salina campus
salina.k-state.edu

Olathe campus
olathe.k-state.edu

Graduate study
k-state.edu/grad

UNDECIDED ABOUT YOUR PATH? DON'T WORRY. WE'VE GOT YOU COVERED. 

It's OK if you're not sure which major to pick when you get here. With the **exploratory studies** program, you can explore different majors, minors, certificates and secondary major options while staying on track with your general education requirements.

Our advisors will help you navigate your options, gain insight into different fields, and match your interests and skills with potential majors and careers.

k-state.edu/advising/exploratory-studies

COLLEGE OF

Agriculture

Together, students and professors are focused on feeding a hungry world and improving lives.

K-State's College of Agriculture prepares you for a future-facing career in one of the world's most essential industries. With access to state-of-the-art labs, expansive research farms and production facilities just minutes from campus, you'll gain hands-on experience from day one. Work alongside expert faculty to explore innovative ways to improve sustainability, feed a growing population, and transform lives through research and agribusiness.

In addition to top-notch academics, you'll build lasting friendships, learn new skills and make industry connections with an array of extracurricular activities. Meet fellow Wildcats who share your interests, make unforgettable memories and boost your resume with 50+ ag-specific clubs and competition teams.

APPLIED LEARNING OPPORTUNITY

You will gain hands-on experience across the entire food production cycle, from managing livestock to operating feed and flour mills to investing in commodities and publishing a student-run magazine. Working in labs, fields and classrooms, you'll use industry-donated resources to produce, process and market goods used on campus and beyond.

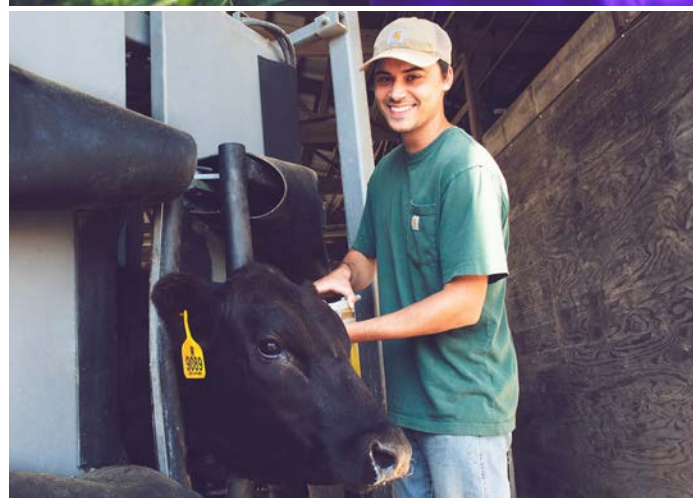


"My favorite part about being an Ag Ambassador is getting to share my story and passion for K-State. **It is a great way to expand leadership skills, campus knowledge and opportunities within the industry.**"

- SIERRA COLLIER



Sierra Collier is an animal sciences and industry major from Fresno, California. As a transfer student, she's found a sense of community through programs such as Ag Ambassadors, Swine Club, and the National Society of Leadership and Success. She's also a Snyder Leadership Legacy Fellow and works part time at a local veterinary clinic.



COLLEGE OF

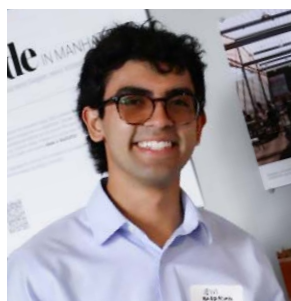
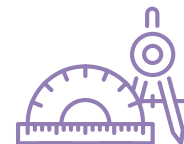
Architecture, Planning & Design

Design spaces, systems and communities that shape the future while collaborating across disciplines and solving real-world challenges in immersive, high-tech studios.

At APDesign, you won't just imagine what's possible, you'll build it. With nationally ranked programs and a shared first-year experience, you will learn to think critically, collaborate creatively and develop advanced skills that impact communities locally and globally.

APPLIED LEARNING OPPORTUNITY

Kansas City Design Center (KCDC) gives you the opportunity to collaborate with professionals and civic leaders to develop urban design proposals that serve Kansas City and other communities. These client-based projects are rooted in practical settings, helping you refine your design, thinking and presentation skills.



"As an APD student, I learned how to push forward during challenges and to look forward to feedback. Our program sets us up to succeed and teaches us how to manage work-life balance."

- JESUS BARRAGAN



Jesus Barragan is originally from Kansas City and is a transfer student studying interior architecture. He is an active member of both the Tri-Alfa Honor Society and the Mortar Board Senior Honor Society. These prestigious honors recognize his exceptional academic performance and his deep commitment to leadership and meaningful community service.



COLLEGE OF

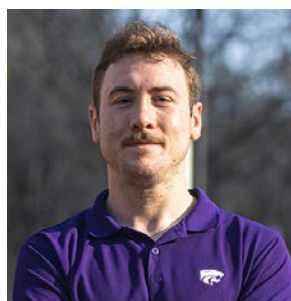
Arts and Sciences

Make discoveries through research in the lab or field, create art in the studio or onstage, and broaden your worldview to become a versatile, well-rounded thinker who can adapt as industries, technology and the world change.

K-State's College of Arts and Sciences is home to the widest range of majors, from biology and psychology to music and political science. Find solutions to the biggest challenges through research, creativity and a global perspective, with broad knowledge that employers value and specialized training across the sciences, humanities and social sciences.

APPLIED LEARNING OPPORTUNITY

Undergraduate research gives you meaningful opportunities to work alongside faculty on innovative projects in a variety of settings. Whether studying protein function, analyzing global politics or exploring creative practices, you will gain valuable research experience and have opportunities to present at conferences or be published in academic journals.



"I want to do research that impacts people in a way that matters, and parasitology is a field where I think I could do that. Around the world, millions of people suffer from the effects of parasites. I'd love to be able to work in that field."

- SAM SPECK



Sam Speck, junior in conservation biology from Smithville, Missouri, researches small mammal ecology at Konza Prairie and curates specimens in the Kansas State Biorepository. His work earned him an undergraduate honorarium from the American Society of Mammalogists and the opportunity to present at their annual conference in Purdue, Indiana.



COLLEGE OF

Business Administration

Build your business acumen and leadership skills through thought-provoking coursework, global experiences and career-focused learning that prepares you to excel in today's dynamic economy.

K-State's College of Business Administration equips you to become an ethical thought leader in a global economy. With majors in areas like finance, marketing, management and data analytics, you gain professional experience through internships, client projects, business competitions and a dedicated career development program that actively supports your long-term success.

APPLIED LEARNING OPPORTUNITY

Wildcat Consulting gives you the chance to solve real business problems for Kansas companies. You will work closely with your peers to deliver strategic recommendations in areas like operations, marketing and finance while applying practice-based skills to make a meaningful impact for local entrepreneurs and nonprofits.



"I chose business because the skills you learn apply to all areas of life. Clear communication, determination and networking are just a few of the many skills that will help me far beyond college or any job I get in the future."

- PARKER PAVLIK



Parker Pavlik is a junior marketing major from Shawnee, pursuing a leadership minor and a certificate in professional strategic selling. As a Menard Scholar and a member of Quest Freshman Honorary and Greek life, he is driven to gain experience and grow his interpersonal skills by learning from real-world professional connections.



COLLEGE OF

Education

Start your teaching journey with the largest teacher preparation program in Kansas and join a community committed to shaping education through innovation, leadership and impact.

The College of Education offers nationally recognized programs designed to prepare future educators to lead and inspire in Kansas and beyond. You'll be equipped to thrive in today's classrooms through early field experiences, strong district partnerships and one-on-one support from expert faculty. Whether on campus or online, you'll engage in real-world teaching from the start — building skills through hands-on practice, academic rigor and inclusive, student-centered approaches. With small class sizes, personalized advising, and a focus on emerging technologies, you'll gain the tools and confidence you need to succeed.

APPLIED LEARNING OPPORTUNITY

As part of your professional program, you'll complete 40 hours of meaningful service beyond the classroom. Whether you're tutoring children, volunteering at local schools or becoming an Education Ambassador, these experiences are all about discovering your strengths, expanding your impact and shaping the kind of thoughtful, engaged educator you want to become.



"The College of Education welcomed me and other newcomers on the first day with open arms, then provided me with countless opportunities. I feel prepared to be a teacher because of K-State."

- ANDREW BERGMEIER



Andrew Bergmeier, a third-generation Wildcat from Hutchinson, graduated with honors in elementary education in May 2025. A proud K-State Ambassador, his campus involvement includes Delta Upsilon fraternity, Chimes Junior Service Honorary and extensive volunteer work with organizations like Big Brothers Big Sisters and Manhattan Catholic Schools.



CARL R. ICE COLLEGE OF

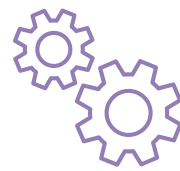
Engineering

Solve real-world problems and design groundbreaking solutions through collaborative learning, innovative research and an interactive engineering education.

K-State's College of Engineering is the most comprehensive engineering college in Kansas, offering an immersive, laboratory-based education that equips you for success across a broad range of fields. From your first year, you'll get hands-on experience in state-of-the-art labs and collaborative maker spaces. Students work with expert faculty and participate in design projects, leadership development and industry engagement, so you'll be prepared to become a global technological leader.

APPLIED LEARNING OPPORTUNITY

Student competition teams give you the chance to design, build, and compete in national and international engineering challenges. With options ranging from concrete canoe to robotic football, these immersive, team-based learning opportunities provide technical experience, leadership development and the opportunity to represent K-State on a highly visible, competitive stage.



"K-State's emphasis on job placement and career and leadership development have brought me comfort. **I know when I graduate from K-State, I will not only earn a degree but have the skills to get a great job.**"

-CHELSEA MCCOLLAM



Chelsea McCollam is a sophomore chemical engineering honors student from Overland Park and a dedicated Engineering Ambassador. She is deeply committed to representing the Carl R. Ice College of Engineering and takes pride in supporting and encouraging fellow students as they learn, grow and ultimately succeed.



COLLEGE OF

Health and Human Sciences

Prepare to improve lives and strengthen communities through innovative, people-focused programs in health, development, leadership and design.

The College of Health and Human Sciences offers a wide range of academic programs that prepare you for a human-focused career. From health care and nutrition to financial planning and interior design, you will gain a strong foundation in both theory and practice while building the skills to lead confidently and make a lasting impact in your communities.

APPLIED LEARNING OPPORTUNITY

Hands-on learning is built into every program through internships, labs, student-led events, competitions, teaching experiences and on-campus clinics. From fashion shows to therapy sessions, you'll apply classroom knowledge in real-world settings, gaining valuable experience while making a difference. Our centers, outreach programs and partnerships ensure students graduate with skills, confidence and impact.

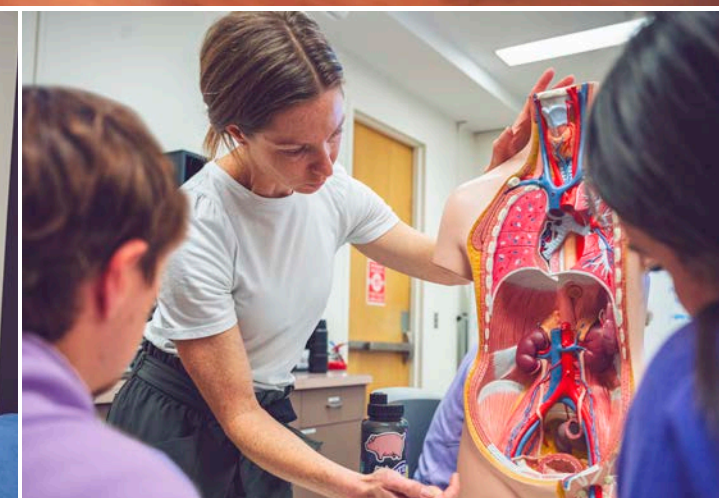
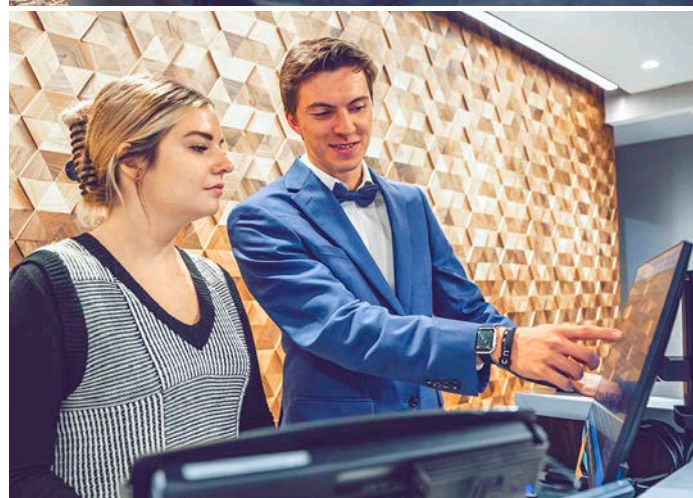


"The college fosters an exceptional learning environment that shows student success is truly a priority. The training and mentorship I've received has provided me with unmatched opportunities and professional growth."

- ANDREW HORN



Andrew Horn earned both his bachelor's and master's degrees in kinesiology from K-State. In 2022, he was invited to California to join a team of researchers from Florida State University to conduct NASA-funded research. In 2023, Andrew received a prestigious F31 fellowship from the National Heart, Lung and Blood Institute, which is in the National Institutes of Health.



COLLEGE OF

Veterinary Medicine

Work with animals of all kinds, from household pets to livestock to exotic wildlife, while building the skills, confidence and knowledge to lead global efforts in animal and human well-being.

At K-State's College of Veterinary Medicine, you won't just study veterinary science, you'll live it. Diagnose, treat and study a wide spectrum of animals through real clinical cases and one-on-one faculty mentorship. With access to a nationally respected teaching hospital, advanced diagnostic labs and a robust network of resources, you'll graduate with an in-depth understanding of biomedical sciences, animal health, food safety and other aspects of veterinary medicine.

APPLIED LEARNING OPPORTUNITY

The NBAF Laboratorian Training Program helps you build the technical skills and knowledge needed to work in high-containment diagnostic, animal or insectary labs. This competitive fellowship provides introductory experiences at the Biosecurity Research Institute, where you will work with mosquitoes for use in a lab setting and conduct assays and procedures commonly used in a diagnostic lab or for large animal research.

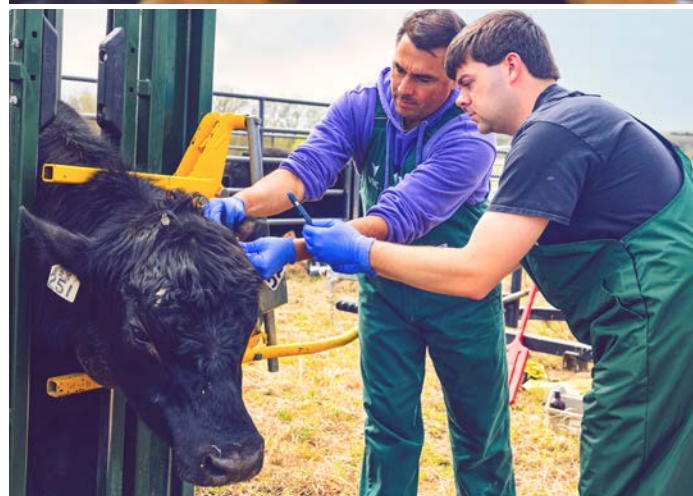


"I've wanted to be a veterinarian my entire life. I love helping animals and their owners. **The one-year master's program prepared me for veterinary school by making the transition feel natural, and it gave me an edge in the application process.**"

- MYA CROY



Mya Croy is a first-year veterinary student after receiving her master's degree in veterinary biomedical science in 2024. She currently serves as a fundraising chair for the College of Veterinary Medicine Class Club and is a recipient of the Commitment to Excellence Award for her work as a veterinary assistant of radiology at K-State's Veterinary Health Center.



MARY LYNN AND WARREN

Staley School of Leadership

Lead with purpose and make a difference through out-of-the-classroom programs focused on community engagement, inclusive leadership and real-world impact.

The Staley School of Leadership empowers you to take ownership of your education through interdisciplinary leadership programs and collaborative learning that emphasize ethical decision-making and civic engagement. With a strong focus on research, career readiness and personal development, you will grow intellectually, gain valuable leadership skills and influence positive change in your career, community and beyond.

APPLIED LEARNING OPPORTUNITY

HandsOn Kansas State offers meaningful service opportunities that connect you with local organizations and fellow students to address community needs. Through events like Mobile Food Distributions, MLK Day of Service and Furniture Amnesty Day, you will gain essential skills while developing civic responsibility, growing as a leader and building strong campus-community partnerships.



"My professors didn't just teach, they walked alongside me. Their constant support, openness to collaboration and belief in my ideas gave me the confidence to grow into the scholar and teacher I am today."

- XATYSWA MAQASHALALA



Xatyswa Maqashalala, originally from South Africa, earned her doctorate in leadership communication in 2025. She brought a rich academic background in agriculture, sustainable development and management, and she earned a graduate certificate in conflict resolution from K-State. She credits the collaborative environment with shaping her as both a scholar and a teacher.



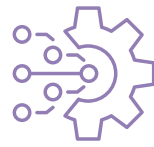
K-State Salina

With cutting-edge technologies, state-of-the-art labs and guidance from industry leaders, you will transform your ideas into solutions that tackle real-world challenges.

K-State Salina offers specialized, high-impact programs where you don't just learn about technology, you use it daily. Our expertise spans spatial computing, advanced air mobility and autonomous systems, with industry partnerships that provide mentorship, experience and careers after graduation. As one of the only universities located on an active airport and home to one of the nation's largest enclosed unmanned aircraft systems flight facilities, you will graduate ready to lead in aviation, engineering technology and immersive design.

APPLIED LEARNING OPPORTUNITY

Immersive systems design is a one-of-a-kind program that lets you help revolutionize how people experience the world. Explore virtual and augmented reality, 3D design, human-computer interaction and cyber-physical systems to build environments that will shape industries like aerospace, health care, education, manufacturing and entertainment.



"At K-State Salina, the classes are small, which gives you chances to engage with students who have the same interests. Various activities and events help students get together and make us feel like we are at home."

- AMR ABOUELKHAIR



Amr Abouelkhair is an international student from Egypt and a dedicated, highly motivated second-year student in the professional pilot program at K-State Salina. His goal is to become an airline pilot. As president of the Minorities in Aviation International Student Club, Amr is passionate about building a strong, supportive and truly inclusive community within the campus.



RESEARCH AND INNOVATION

CHANGE THE WORLD.

k-state.edu/research

If you're driven by big ideas, determined to find better solutions and fueled by the belief that change is possible, you'll find your place here.

Researchers at K-State play a vital role in solving the most challenging problems facing society. Being an R1, land-grant university means we believe in rolling up our sleeves and getting to work to improve the well-being of Kansas, the nation and the world.

As a student, you can participate in your own research and contribute to advances in medicine, public health, cyber defense, sustainability and much more, while working alongside faculty mentors who are experts in their fields. From developing drought-resistant crops to discovering life-saving vaccines to building innovative AI systems, you have endless transformative opportunities awaiting you at K-State.



"K-State is uniquely situated to provide hands-on research experiences because it prioritizes faculty who are invested in connecting students to these career-building opportunities."

- SAM SPECK
FISHERIES, WILDLIFE, CONSERVATION
AND ENVIRONMENTAL BIOLOGY



390+
PATENTS
AWARDED

to K-State researchers.

\$281M+
IN EXTRAMURAL
AWARDS RECEIVED

across 1,189 awards in FY 2025.

LEARN BY DOING.

k-state.edu/appliedlearning

K-State is committed to ensuring you get opportunities to apply what you learn in the classroom to real-world, real-time challenges that help you see the importance of your education. Applied learning experiences such as hands-on research, community service and internships will grow your skills, prepare you for your career and have a positive impact on the world.

What are applied learning experiences?

- **Internships** – Explore career options.
- **Research** – Solve problems and discover new ideas.
- **Leadership** – Lead student orgs or campus projects.
- **Community service** – Give back to your community.
- **Study abroad** – Discover the world.
- **Creative projects** – Show off your creative skills.

What will I gain from applied learning?

- **Confidence** – Know what you're good at.
- **Clarity** – Discover what you want to do next.
- **Skills** – Build real-world abilities employers look for.
- **Purpose** – See how your work makes a difference.

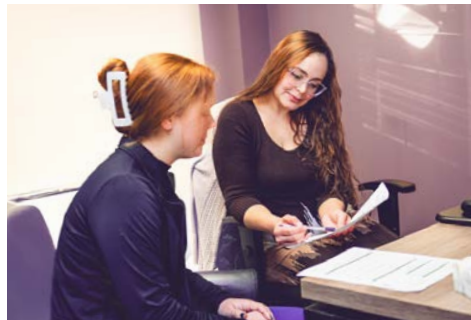
"Learning outside the classroom proves your potential. It has broadened my perspective on what is important to me and what will help me in the future."

- ANDREW NAVARRO
POLITICAL SCIENCE,
INTERNATIONAL STUDIES CERTIFICATE



BE WELL AND WILD.

Your well-being is essential to effectively navigating your education. That's why we are committed to equipping you with the tools and support that meet you where you are so you can be at your best.



k-state.edu/dassa

Emotional wellness

Counseling and Psychological Services (CAPS)

Our counseling services offer a safe and confidential environment for you to discuss your concerns and challenges. As a K-State student, you are eligible for up to eight free sessions per semester through CAPS.



Physical wellness

Rec Services, Lafene Health Center

Take charge of your physical well-being with group fitness classes, intramural sports, outdoor recreation and more. Our campus health center also helps ensure that you have access to comprehensive health care support.

Social wellness

400+ student organizations, K-State Student Union

Our broad range of student organizations and clubs cater to a wide array of interests, from cultural and academic to recreational and volunteer activities. These groups foster a sense of community and are a way for you to build lasting friendships and develop leadership skills.



Financial wellness

Cashiers and Student Accounts, Powercat Financial, Student Financial Aid

Get help with tuition and financial aid, create a personal financial plan, or learn ways to empower your financial future.



Chester E. Peters Recreation Complex

Located right on the edge of campus, K-State's recreation complex is fully accessible and features a number of amenities, including:

- Racquetball courts
- Two gymnasiums
- Three weight rooms
- Two cardio areas
- Group fitness studios
- Climbing wall and bouldering rock
- Two indoor tracks

"Outside of my time at work or in the classroom, I really enjoy going to our Rec Center for fitness and exercise and playing sports. That's the first thing I do to keep myself healthy throughout the week."

- NICHOLAS EDWARDS
BIOMEDICAL ENGINEERING,
MINOR IN LEADERSHIP STUDIES



RETURN ON INVESTMENT

INVEST IN YOUR FUTURE.

k-state.edu/value

K-State equips you with everything you need for a life filled with purpose, progress and impact.

Benefit from small class sizes and interdisciplinary learning that encourages collaboration, critical thinking and creative problem-solving. Innovative research, hands-on learning, paid internships and one-of-a-kind programs prepare you to lead in high-demand industries. A commitment to your holistic health — mental, physical, financial and social — empowers you to grow personally and professionally. With specialized career development, dedicated mentors, industry partnerships and one of the best alumni networks in the country, you will graduate with real-world experience, confidence and meaningful connections.

To be a Wildcat is to be ready to take on what's next. From engineers advancing renewable energy to educators changing lives in classrooms, from entrepreneurs launching startups to researchers tackling global health challenges, Wildcats are difference-makers in every industry around the globe.

EMPLOYERS OF K-STATE GRADUATES

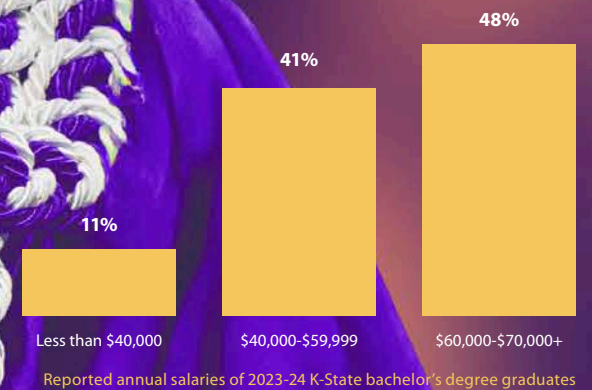
- Amazon
- Deloitte
- Ernst & Young
- Google
- KPMG
- Marriott
- Microsoft
- Morgan Stanley
- NASA
- PepsiCo
- Pfizer
- Tesla

*"My position with K-State Athletics as a student photographer has influenced my post-career goals by making me realize I love photography and storytelling. **It's something I want to keep doing for the rest of my career.**"*

- AUSTIN VAN METER
NEWS AND SPORTS MEDIA



96%
OF WILDCATS FIND CAREERS
or pursue further education.



CAMPUS LIFE

EXPERIENCE LIFE AS A WILDCAT.

From the moment you arrive, you'll be part of a vibrant, welcoming community of Wildcats who believe that progress happens when we lift each other up and work side-by-side toward something better.



k-state.edu/student-life

Live well, eat well and be well.

Our nationally recognized residence halls have everything you need: award-winning dining centers, a welcoming community of friends from around the world, laundry, fitness rooms, study lounges and secure access with 24-hour staff so you and your family can feel confident and safe.

There's never a dull moment at K-State.

Get involved with something you already love or try something new with 400+ student organizations. Cheer on the Wildcats from the best seats in the stadium. Discover late-night events, campus arts, live concerts and your fitness rhythm at the Rec.

The entire town has your back.

Affectionately known as The Little Apple, Manhattan has local coffee shops, unique retail districts and some of the region's best outdoor recreation. Enjoy a thriving arts and culture scene and a lively downtown full of energy and personality. Best of all, you'll be part of a community that cares.

"To be a K Stater is to be part of a community. You're never alone — there's always someone ready to help you. You'll always have a family."

- REAGAN COON
THEATRE, MUSICAL THEATRE



400+
STUDENT
ORGANIZATIONS

Have a passion? Join the club.

COSTS AND SUPPORT

k-state.edu/sfa

The sticker price doesn't tell the whole story. We work with you and your family to find ways to make your education manageable. Contact us to discuss your options.

University scholarships

Category	Scholarship Name	Amount	Requirements
IN-STATE FRESHMAN	University Scholar Award	\$5,500/Year (\$22,000 total)	Minimum requirements: 3.85 GPA and 29+ ACT or 1330+ SAT
	Royal Purple Scholarship	\$4,000/Year (\$16,000 total)	Minimum requirements: 3.7 GPA and 25+ ACT or 1200+ SAT
	Wildcat Traditions Scholarship	\$2,500/Year (\$10,000 total)	Minimum requirements: 3.5 GPA and 22+ ACT or 1100+ SAT
	Limestone Award	\$1,500/Year (\$6,000 total)	Minimum requirements: 3.5 GPA
	Landmark Award	\$1,000/Year	Minimum requirements: 3.25+ GPA
OUT-OF-STATE FRESHMAN AND TRANSFER	Wildcat Nonresident Award	\$8,847-17,694/Year	General eligibility: Must be a non-Kansas resident Minimum requirements: 3.25 GPA
	Missouri Match	\$17,346/Year	General eligibility: Must be a Missouri resident Minimum requirements: 3.25 GPA and 22 ACT or 1100 SAT
	Heritage Scholarship for Non-Kansas Residents	\$12,000/Year	General eligibility: One parent or grandparent (biological or adopted) must have graduated from K-State. Minimum requirements: 3.0 GPA
IN-STATE TRANSFER	Transfer Impact	\$2,000/Year	Minimum requirements: 3.5+ cumulative college GPA
	Transfer 1863 Landmark Award	\$1,000/Year	Minimum requirements: 3.0+ cumulative college GPA
TRANSFER	Phi Theta Kappa Award	\$1,000 one-time, non-renewable award	Eligibility requirements: Cumulative college GPA of 3.5 or above from transfer institution(s) required. You must also be a PTK member during your last semester before attending K-State.

Cost of attendance vs. actual cost
k-state.edu/cost



2025-2026 Undergraduate expenses

Kansas resident (LIVING ON CAMPUS)

Tuition and mandatory fees	\$12,694
On-campus housing* and food* (3 MEALS/DAY)	\$13,652
Total billed expenses:	\$26,346
Books and supplies	\$1,062
Transportation	\$1,116
Personal costs	\$2,028
Total other estimated costs:	\$4,206
Total expenses:	\$30,552

Non-Kansas resident (LIVING ON CAMPUS)

Tuition and mandatory fees	\$30,388
On-campus housing* and food* (3 MEALS/DAY)	\$13,652
Total billed expenses:	\$44,040
Books and supplies	\$1,062
Transportation	\$1,116
Personal costs	\$2,028
Total other estimated costs:	\$4,206
Total expenses:	\$48,246

*First-year students are required to live on campus. This estimate is based on the median of on-campus housing at K-State. Options range in cost from \$5,660-\$9,650. *Food options for meal plans range from \$2,290-\$5,140.

BECOME A WILDCAT

APPLY TODAY

k-state.edu/apply

K-State's application process is simple and straightforward, so you can start pursuing your goals as soon as possible. Our admissions team is available to provide assistance and support whenever needed, ensuring a smooth journey to K-State!

Priority **dates**

- Fall freshmen: **Dec. 1**
- Spring transfer: **Dec. 1**
- Fall transfer: **May 1**

Admission **requirements**

Freshmen: 3.25+ GPA or 21+ ACT or 1060+ SAT
Transfer: 2.0+ GPA on 24+ credit hours transfer coursework

Scan now to start your application



The application takes approximately 30 minutes to complete, and your progress can be saved if you need to return later.

#1
**BEST STUDENT
LIFE IN KANSAS**

Niche.com, 2025

Some academic programs also have additional admission requirements. If you don't meet the admission requirements above, apply for conditional admission as early as possible. Incoming freshmen: An ACT or SAT score is not required for admission, but many scholarship awards require both a qualifying GPA and a qualifying ACT or SAT. Transfer students: If you have less than 24 transferable credit hours, you must also meet freshman admission requirements.

We can't wait to see you
become a Wildcat.



Scan the QR code to connect
with us on social media.
[@kansastatebound](#)

KANSAS STATE
UNIVERSITY