



K-State Olathe

2018 Fall Update with the President and Provost

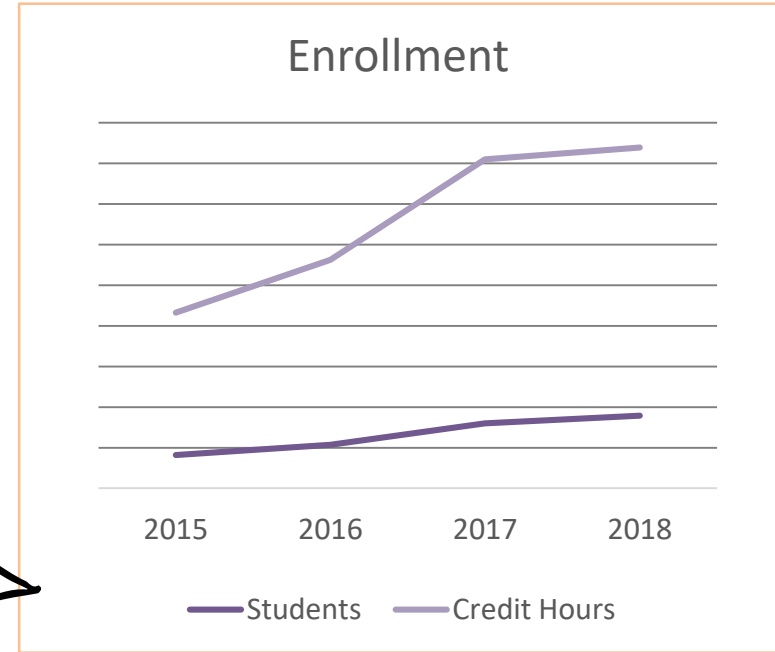
K-STATE
2025

KANSAS STATE
UNIVERSITY

Progress/accomplishments

Providing a high-quality education

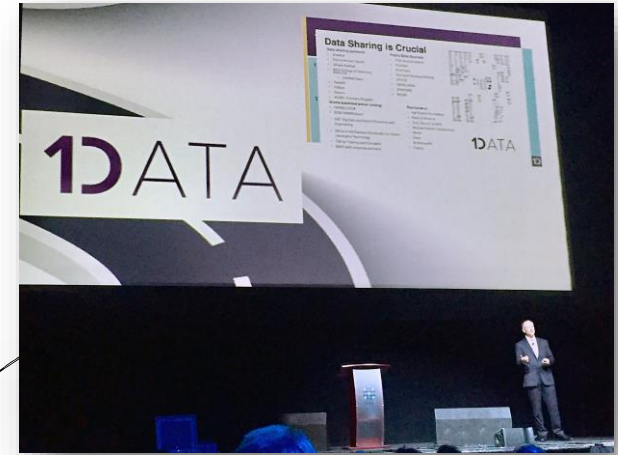
- Growth in academic programs and increased enrollment
- Newest programs
 - Hospitality Management
 - School Counseling



Progress/accomplishments

Solving problems through applied research

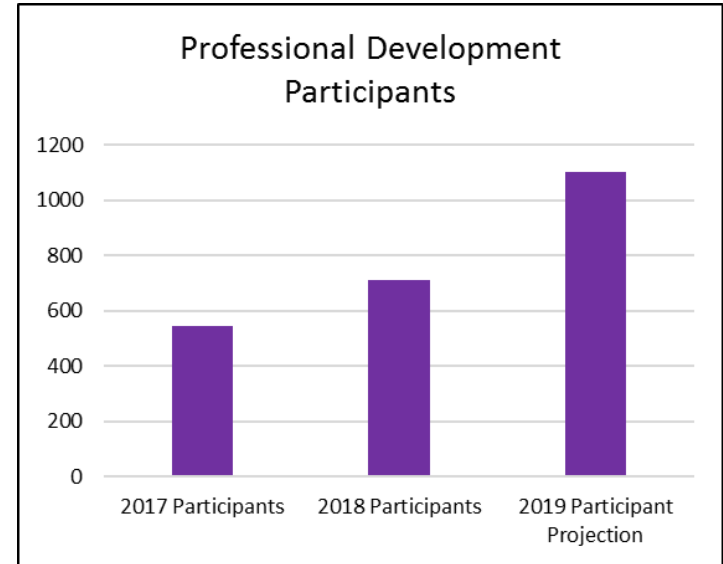
- 1Data
- Sensory and Consumer Center
- Urban Food Systems
- Food Safety



Progress/accomplishments

Improving success through engagement

- Enhanced commitment to professional development
 - Numbers of attendees grows
 - A suite of offerings
- Growing the future workforce
 - Impact
 - Key collaborations



Key metrics

- Expand for-credit offerings
- Increase the number of students enrolled
- Support interdisciplinary, applied research collaborations
- Grow professional development programs
- Help fill the demand for future workforce
- Engage more K-State colleges and individual departments in Greater Kansas City



K-State in KC Initiative

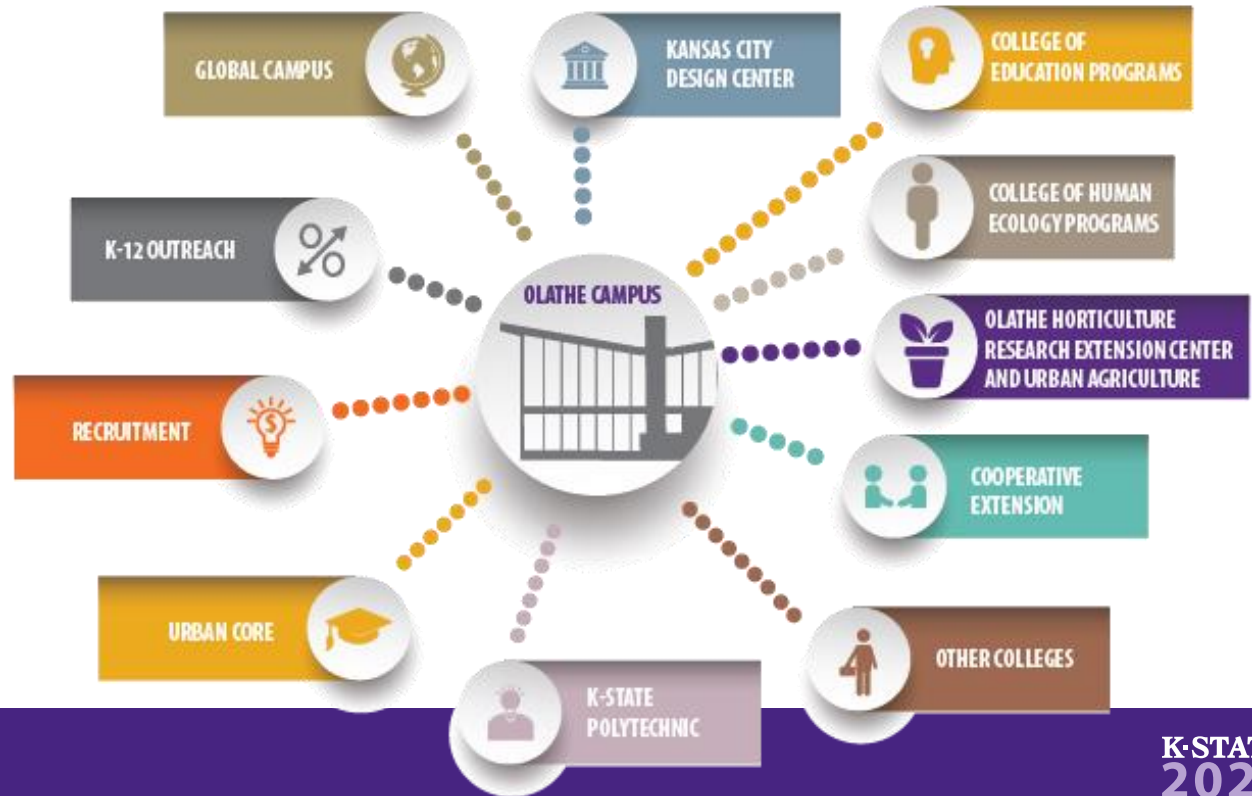
Opportunities and Recommendations: Expanding K-State programs in KC

- **Expand** current K-State programs to KC
- **Enlarge** the Professional Science Masters and certificate offerings
- **Grow** professional development offerings and customized corporate training
- **Coordinate** and expand regional engagement university-wide
- **Multiply** research opportunities that are applied and industry focused



K-State in KC | Model for Success

One University
Hub-and-Spoke Model



K-State in KC | Next Steps

- **Appoint** an action-oriented visioning group or taskforce -- UNDERWAY
- **Increase awareness** within K-State of opportunities in KC, especially the opportunities beyond animal health and food safety
- **Advance** a communication plan to share opportunities and identify interested faculty, departments and colleges
- **Develop** process and procedures to assure program success and market need/demand; final validation for areas of opportunity
- **Champion** both a Strategic Business Plan and Operational Program Plans for new initiatives and offerings
- **Advocate** and assist with removing barriers and improving processes, collaboration and communication



Top priorities moving forward

- Support the K-State in KC initiative – Become the hub!
 - Bring more academic programs to the Olathe campus
 - Become nimble, including streamlined processes and procedures
- Expand current academic programs
- Continue to develop and leverage professional development
- Grow research programs in strength areas
- Strengthen pipeline partnerships with higher education institutions
- Utilize resources and facilities in alignment with strategic planning

