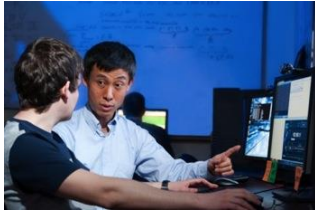


# K-STATE 2025



**2014 visit with the President and Provost**

# K-STATE 2025: Themes



**Theme I:** Research,  
Scholarly and  
Creative Activities,  
and Discovery



**Theme II:**  
Undergraduate  
Educational  
Experience



**Theme III:** Graduate  
Scholarly Experience



**Theme IV:**  
Engagement,  
Extension,  
Outreach, and  
Service



**Theme V:** Faculty  
and Staff



**Theme VI:** Facilities  
and Infrastructure



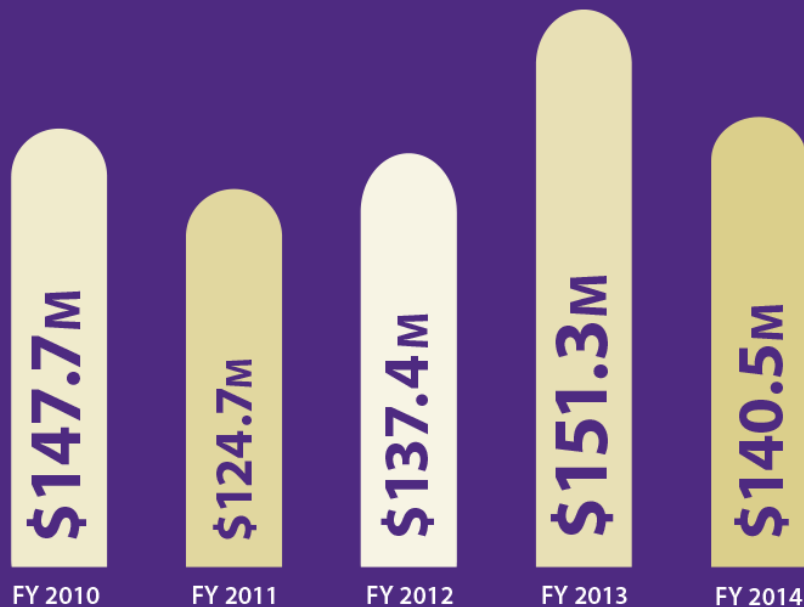
**Theme VII:**  
Athletics

***Kansas State University will be  
recognized as one of the nation's  
Top 50 Public Research Universities.***

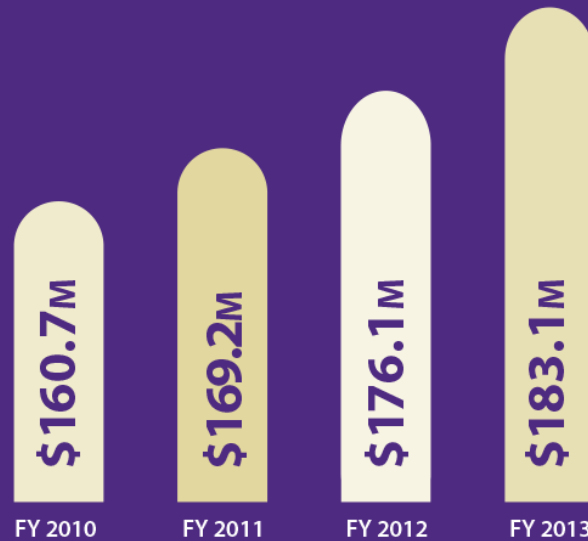
# K-STATE 2025: Snapshots of Success



## \$ Total Research Awards



## \$ Total Research Expenditures



# K-STATE 2025: Snapshots of Success



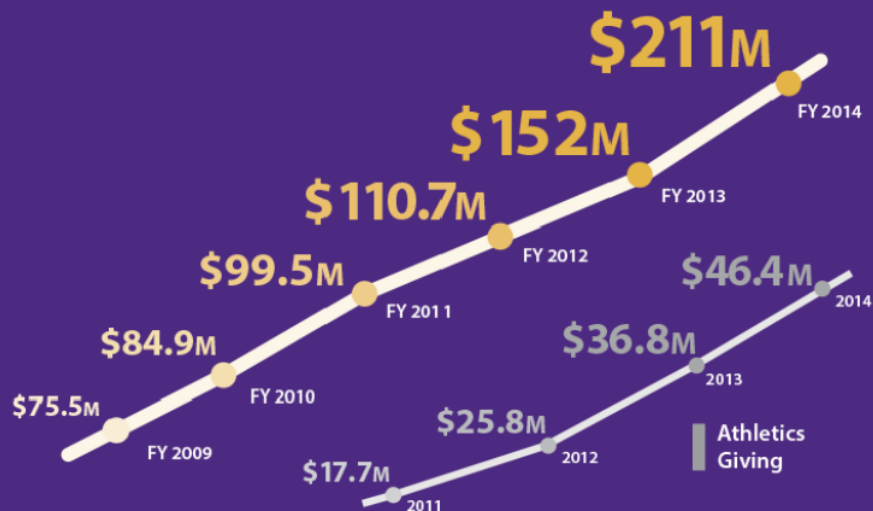
## Increased Fundraising



Total  
Giving



Athletics  
Giving



## Alumni Participation



Total



Ahearn  
Members



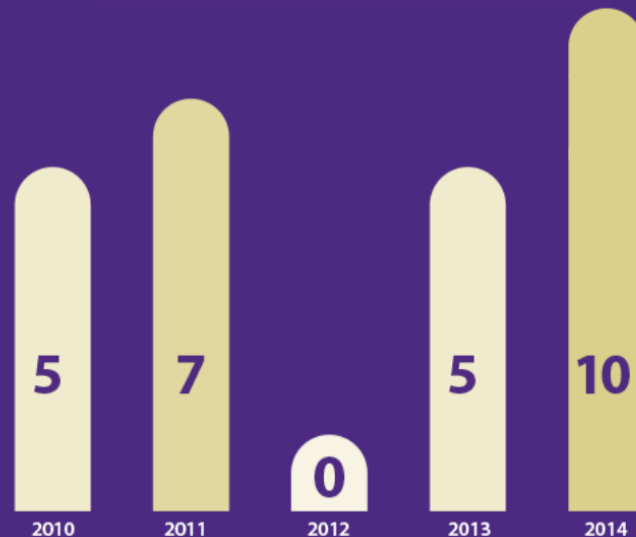
# Private Giving: Increasing our Endowment



Benefits K-State 2025 areas:

- Chairs
- Professorships
- UG and Graduate scholarships

## New Endowed Faculty Funds



**27 Total**

# K-STATE 2025: Snapshots of Success



Enhanced Facilities in Past 5 Years Include:

**JARDINE APARTMENTS** JUSTIN HALL EXPANSION

WILLIAMS AUDITORIUM RENOVATION **INTERNATIONAL ANIMAL HEALTH AND BASKETBALL TRAINING FACILITY** **FOOD SAFETY INSTITUTE (OLATHE)**

PETERS RECREATION COMPLEX EXPANSION MIKE GOSS TENNIS STADIUM

**O.H. KRUSE FEED TECHNOLOGY INNOVATION CENTER**

INTERCOLLEGIATE ROWING CENTER KIRMSER HALL RENOVATION

CHILD DEVELOPMENT CENTER **WEST STADIUM CENTER**

**LEADERSHIP STUDIES BUILDING** BEACH MUSEUM EXPANSION

HONORS HOUSE STUDENT LIFE CENTER (SALINA) **PARKING GARAGE**

More than \$89.4 million invested in academic facilities FY13-FY14



# K-STATE 2025: Benchmarks of Excellence

Institution	Total Research Expenditures				Doctorates conferred				National Academy members			
	FY2010	FY2011	FY2012		2010-11	2011-12	2012-13		2012	2013	2014	
Kansas State University	\$160,679,000	\$169,167,000	\$176,141,000	↑	162	162	158	↓	1	1	1	↔
Auburn University	\$145,115,000	\$163,335,000	\$133,013,000	↓	204	247	237	↓	2	1	1	↔
Clemson University	\$174,693,000	\$166,350,000	\$142,096,000	↓	192	220	187	↓	1	2	1	↓
Colorado State University	\$302,896,000	\$330,784,000	\$375,919,000	↑	203	235	230	↓	5	5	5	↔
Iowa State University	\$250,120,000	\$267,641,000	\$260,995,000	↓	358	394	349	↓	9	7	4	↓
Louisiana State University	\$289,872,000	\$287,841,000	\$285,395,000	↓	255	322	305	↓	2	3	2	↓
North Carolina State University - Raleigh	\$360,795,000	\$378,154,000	\$404,225,000	↑	395	446	488	↑	17	19	19	↔
Oklahoma State University-Main Campus	\$147,094,000	\$162,786,000	\$166,523,000	↑	187	212	238	↑	3	3	3	↔
Oregon State University	\$216,595,000	\$228,814,000	\$240,507,000	↑	172	206	204	↓	4	4	4	↔
University of Massachusetts - Amherst	\$169,143,000	\$181,297,000	\$194,775,000	↑	258	268	295	↑	9	9	11	↑
Washington State University	\$304,352,000	\$388,974,000	\$335,930,000	↓	197	203	268	↑	9	9	7	↓

# K-STATE 2025: Benchmarks of Excellence

Institution	6-yr Graduation rate by cohort					1st yr retention			
	2004	2005	2006	2007		Fall 2010	Fall 2011	Fall 2012	
Kansas State University	59%	56%	58%	60%	↑	81%	82%	81%	↓
Auburn University	66%	66%	68%	68%	↔	87%	89%	89%	↔
Clemson University	76%	80%	82%	83%	↑	89%	90%	92%	↑
Colorado State University	64%	64%	63%	64%	↑	83%	83%	86%	↑
Iowa State University	70%	68%	71%	68%	↓	86%	88%	87%	↓
Louisiana State University	61%	62%	65%	67%	↑	84%	84%	82%	↓
North Carolina State University - Raleigh	72%	72%	71%	74%	↑	88%	89%	83%	↓
Oklahoma State University-Main Campus	59%	62%	62%	60%	↓	78%	80%	79%	↓
Oregon State University	60%	61%	61%	61%	↔	83%	81%	84%	↑
University of Massachusetts - Amherst	68%	67%	70%	73%	↑	89%	89%	89%	↔
Washington State University	69%	67%	67%	65%	↓	82%	84%	80%	↓



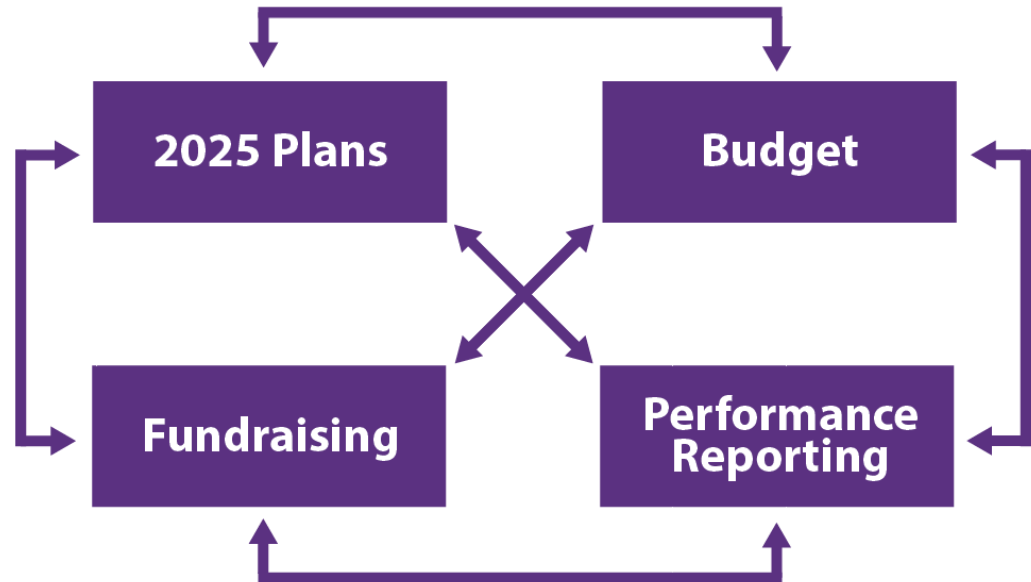
# K-STATE 2025: Plans

- 2025 is supported by all our plans together aligned at all levels
- All colleges, major academic units, Student Life and associated departmental plans completed/available online  
([k-state.edu/2025/initiatives/college-planning](https://k-state.edu/2025/initiatives/college-planning))
- Plans coming this year for Research, Administration and Finance, Human Capital Services, and Communications and Marketing
- Sustainability Plan completed/available online
- Draft Diversity Plan to be revised in coming year by expanded planning group with broadened focus on inclusion for all



- 2013-2014 progress to be shared via letters on themes/common elements throughout the fall – annual report published in December
- Next steps: aligning planning, budgeting, fundraising and progress reporting

## Framework for 2025 Success



# RSCAD Focus in Coming Year

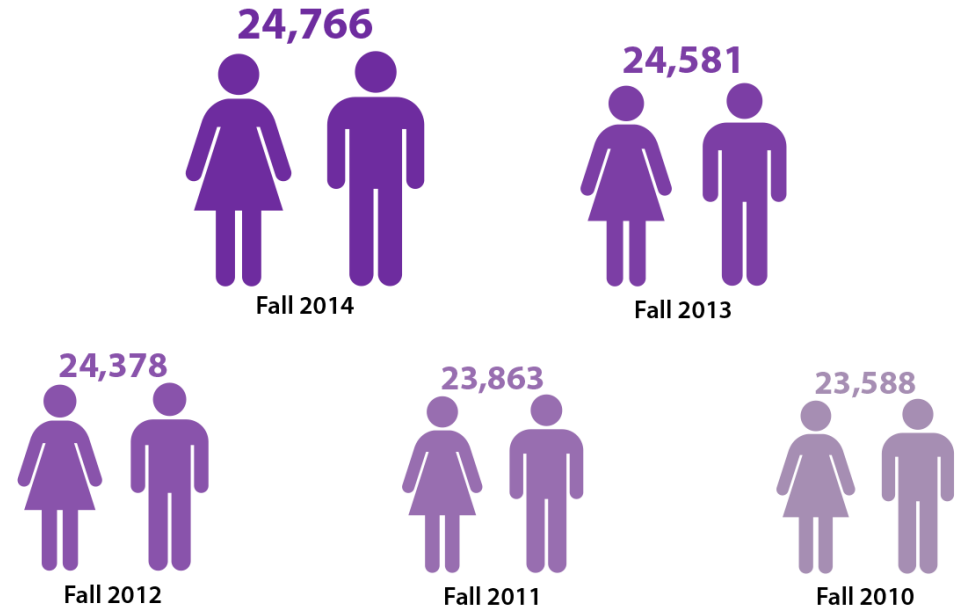


- Leadership transition
- Detailed action plan with specifics for growing scholarship/increasing our research, scholarly and creative activities, and discovery activities at K-State

# Undergraduate and Graduate Educational Experience

- Strategic Enrollment Task Force
- Process for tracking UG research
- Graduate School external review recommendations

## Growing Enrollment



# Engagement – Global Food Systems



- Expected doubling of middle class by 2030
- Need to produce more food for more people
- K-State already global leader among research universities
- Unique focus on talent, innovation and training



## As We Grow....

### CURRENT PROGRAMS

#### DEGREES & LABS:

Food Science  
Horticulture  
Biomedical Science  
Biological & Ag Engineering  
Agribusiness (Animal Health)  
Adult Education

#### CENTERS & PROJECTS:

U.S. China Animal Health  
Innovation Accelerator  
Urban Food Urban Water  
Kitchen Incubator  
Sensory & Consumer Research  
Microbial Surveillance Lab

+

### PROPOSED

**“School for Applied and  
Interdisciplinary Graduate  
Studies”**

**Instructors, Researchers**  
Experts and practitioners, Faculty

**Industry needs**  
R&D  
Workshops, Courses

**“Exec Master of Applied Science”**  
Customizable  
Technology + soft skills

# Faculty and Staff: Leadership Transitions



Karen  
Burg



Cindy  
Bontrager



Darren  
Dawson



Marcelo  
Sabates



Cheryl  
Johnson

- Searches this fall:
  - Dean, College of Veterinary Medicine
  - President, KSU Foundation



# Faculty Changes in # and Average Salary FY2012-FY2014

All Faculty as reported in the Oklahoma State Faculty Salary Study								
Faculty Rank	2011-2012		2012-2013		2013-2014		Changes since 2011 - 2012	
	Number	Avg. Salary	Number	Avg. Salary	Number	Avg. Salary	Change in Number	Change in Salary
Professor	372	\$104,384	381	\$104,610	394	\$105,633	+ 22	+\$1,249
Associate	321	\$73,628	323	\$74,592	331	\$76,405	+ 10	+\$2,777
Assistant	281	\$64,418	327	\$63,765	337	\$65,220	+ 56	+\$802
Instructor	134	\$46,274	149	\$46,726	161	\$47,031	+ 27	+\$757
Total	1108	\$78,310	1180	\$77,765	1223	\$78,872	+115	+\$562

Tenured/Tenure-Track Faculty Only*						
Faculty Rank	2011-2012		2013-2014		Changes since 2011 - 2012	
	Number	Avg. Salary	Number	Avg. Salary	Change in Number	Change in Salary
Professor	372	\$104,282	390	\$106,043	+ 18	+\$1,761
Associate	318	\$73,655	322	\$76,380	+ 4	+\$2,725
Assistant	230	\$65,225	237	\$67,820	+ 7	+\$2,595
Total	920	\$83,932	949	\$86,433	+ 29	+\$2,501

\*Source: Kansas State University Office of Planning and Analysis

# Faculty and Staff: Investment in our Future



- Strategic decision to invest funds in faculty/staff
- More than \$13 million new base budget investment in FY15 in faculty/staff compensation & positions out of total \$16,936,464

Merit salary increases (2 percent) .....	\$8,084,417
University support staff salary increase (2 percent) .....	\$686,159
Targeted faculty salary enhancements .....	\$799,268
Faculty promotions/professorial performance awards .....	\$1,072,419
Backfill 5-year promotions .....	\$385,400
Fringe benefit increase including GHI, KPER and longevity .....	\$44,517
Institutional scholarships .....	\$1,328,000
Utilities infrastructure .....	\$1,000,000
Instructional fees/GTA waiver increase (5 percent) .....	\$512,279
New faculty positions .....	\$598,718
Base funding support for academic unclassified professionals .....	\$242,055
Cover state reduction FY 2015 and human capital services .....	\$1,000,000
Student-centered tuition enhancements .....	\$141,600
Security studies (faculty in history and political science) .....	\$400,000
Pre-award research services support .....	\$63,733
Student services support .....	\$132,900
Alumni database .....	\$85,000
Academic building support .....	\$360,000
Subtotal base budget allocations .....	\$16,936,465

# Faculty and Staff: Human Capital Services



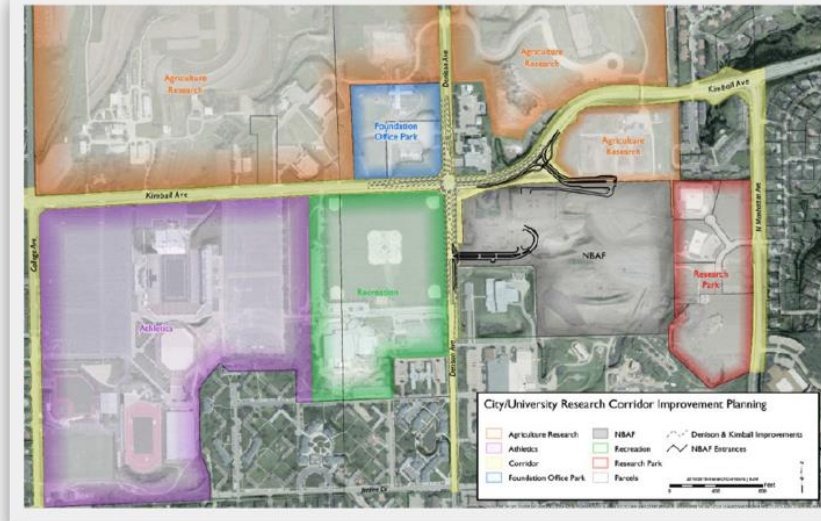
- Leadership transition and reorganization of centrally provided Human Capital Services
- Listening, learning, strategic action planning to further advance faculty and staff goals
- Facilitating transition from Classified to University Support Staff
- Redesign/automation of recruitment and hiring end-to-end
- Next steps to address compensation structures for Unclassified Professionals/Professional Staff
- Will require patience, willingness to change and investment in resources

# Facilities and Infrastructure: Continued Investment



\$167.1 million planned investment in academic facilities for FY15

# Facilities and Infrastructure: Continued Planning



North campus corridor

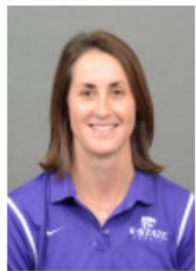
- New transparent space request and allocation process
- Short and long-term parking planning



## New Head Coaches



**JEFF  
MITTIE**  
*Women's  
Basketball*



**DANIELLE  
STEINBERG**  
*Women's  
Tennis*



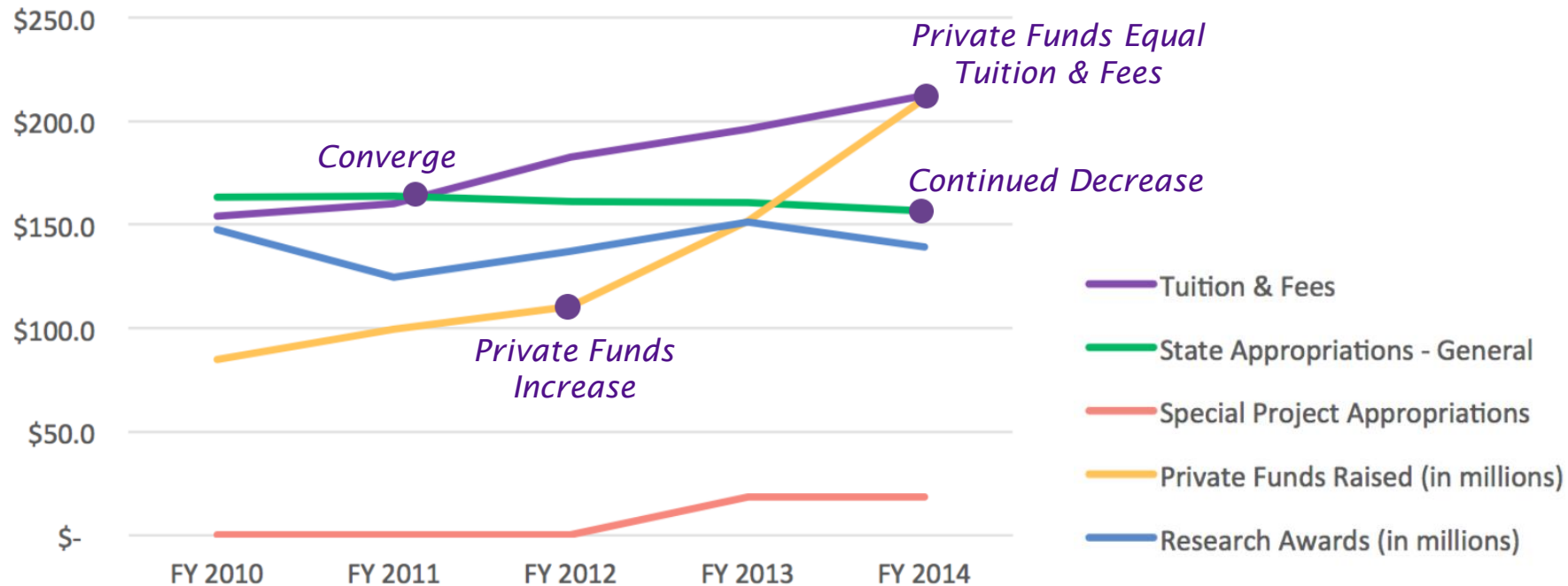
**GRANT  
ROBBINS**  
*Men's  
Golf*



Vanier Football Complex

# Commitment to Funding: A Changing Model

(in millions)





# Building an Environment of Success for All



**Your Voice. A Stronger K-State.  
Thank you for all you do!**

