

MATH010 INTERMEDIATE ALGEBRA

Fall Semester 2011

This syllabus gives a detailed explanation of the course procedures and policies. You are responsible for this information - ask your instructor if anything is unclear.

Please feel free to come by my office when you need help.

OFFICE HOURS MTWU 3:30-4:30

Dale P. Hawkinson

KSU - Holton 101E

(785)532-5386

dph@math.ksu.edu

<http://www.math.ksu.edu/~dph>



CLASS ASSIGNMENTS

	Day	Time	Room
SEM	F	11:30	CW 101 (only on assigned test dates)
RECITATION	FILL	IN	YOURS



RESOURCES

The following items are required for this course.

Intermediate Algebra Units 1-5 Course Packet Hawkinson

Internet access (personal, public or university computing)



KSOL (K-State Online)

Login, click the MATH010 link, and use the navigation bar on the left of the page.

All course materials are protected by US copyright law.



CALCULATORS

Please be sure you have a "scientific" calculator. A **TI-30X IIS (or B)** is recommended.



ONLINE LECTURES

The traditional large room, live lecture format for this course has been replaced by online interactive lectures. In the first section of the course packet there are lecture outlines – two pages for each lecture. Complete the online activity by filling in the notes and answering the questions as you proceed. The lecture must be completed in one sitting. (You may choose to stop before the end, but you will have to start over at the first screen when you return to your work.) The "Credit Version" of the lecture for each day is available for 48 hours. After that time, a "Review Version" of the lecture will be available to view as often as you wish, but not for credit points.



HOMEWORK

Work all of the Exercises for the lesson in a manner consistent with the lecture. The answers may be compared with the Key on the last few pages of the Unit. Each assignment includes an **Insight** to further develop the depth and application of the topic. Please show your work to receive full credit.



RECITATION CLASS

During recitation class each week, homework and tests are returned, and individual or group assistance is provided. This is the best time to work on your homework, and to get one-on-one help.



SUBMISSION OF WRITTEN WORK

For each unit, the four sets of written lecture notes are to be *followed by* the four homework assignments, and should be turned in at the time of the exam. All work is to be organized and *properly affixed using the center clasps* in the provided course folder. Place your folder in the grading box designated for your recitation day. If you forget or lose your folder, you must obtain another one from the instructor. Stapled, bound or unbound pages, and disorganized work will not be graded.



UNIT REVIEWS & TESTS

For units 1-4, there is an online review to prepare for a 30 point test. There is a review for Unit 5, but its test questions will be included on the Final Exam. Note that the review questions are meant only for practice, not an iron clad format of a Unit Test.



GRADING

Lecture Notes: 20 @ 4 80 points

(For each lecture, the online "Credit Version" is 3 points, and a clearly written set of notes is 1 point.)

Homework: 20 @ 6 120 points

(For each lesson, the Homework exercises are 4 points, and the Insight is 2 points.)

Unit Tests : 4 @ 30 120 points

(Retake opportunities are provided; see the Course Schedule for details.)

Final Exam : 80 points

Total Points: 400 points

A 360 – 400 points

B 320 – 359 points

C 280 – 319 points

D 240 – 279 points

F less than 240 points



SPECIAL NOTE

If you have any condition (e.g. physical or learning disability) which will require academic accommodations, please notify the instructor when classes begin.



POLICY NOTE

Plagiarism and cheating are serious offenses and may be punished by failure on the exam, paper, or project, failure in the course and/or expulsion from KSU.

More information about KSU Academic Honesty policies may be found at the following website.
[http:// www.ksu.edu/honor](http://www.ksu.edu/honor)

MATH010 Course Schedule - Fall Semester 2011

Lectures (Credit Version) go online at 11:00am on the assigned day.

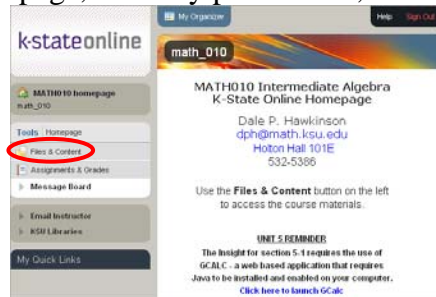
Recitation classes meet each week at their scheduled times.

DATE	LECTURE/EXAM	VENUE/DUE DATE
M Aug 22		
W Aug 24	1-1	online 11am (72 hrs.)
F Aug 26	1-2	online 11am (72 hrs.)
M Aug 29	1-3	online 11am (48 hrs.)
W Aug 31	1-4	online 11am (48 hrs.)
F Sep 2		no class
M Sep 5		Labor Day
W Sep 7	REVIEW	online
F Sep 9	EXAM 1 - 11:30am	CW 101 - NOTES/HW DUE
M Sep 12	2-1	online 11am (48 hrs.)
W Sep 14	2-2	online 11am (48 hrs.)
F Sep 16		no class
M Sep 19	2-3	online 11am (48 hrs.)
W Sep 21	2-4	online 11am (48 hrs.)
F Sep 23		no class
M Sep 26	REVIEW	online
W Sep 28		
F Sep 30	EXAM 2 - 11:30am	CW 101 - NOTES/HW DUE
M Oct 3	3-1	online 11am (48 hrs.)
W Oct 5	3-2	online 11am (48 hrs.)
F Oct 7		no class
M Oct 10	3-3	online 11am (48 hrs.)
W Oct 12	3-4	online 11am (48 hrs.)
F Oct 14	RETAKE 1 or 2	11:30am - CW 101
M Oct 17	REVIEW	online
W Oct 19		
F Oct 21	EXAM 3 - 11:30am	CW 101 - NOTES/HW DUE
M Oct 24	4-1	online 11am (48 hrs.)
W Oct 26	4-2	online 11am (48 hrs.)
F Oct 28		no class
M Oct	4-3	online 11am (48 hrs.)

31		
W Nov 2	4-4	online 11am (48 hrs.)
F Nov 4		no class
M Nov 7	REVIEW	online
W Nov 9		
F Nov 11	EXAM 4	CW 101 - NOTES/HW DUE
M Nov 14	5-1	online 11am (48 hrs.)
W Nov 16	5-2	online 11am (48 hrs.)
F Nov 18		
Nov 21-25		Thanksgiving Break
M Nov 28	5-3	online 11am (48 hrs.)
W Nov 30	5-4	online 11am (48 hrs.)
F Dec 2	RETAKE 3 or 4	11:30am - CW 101
M Dec 5	FINAL OUTLINE	online
W Dec 7		
F Dec 9		no class
TBA		Final Exam UNIT 5 NOTES/HW DUE

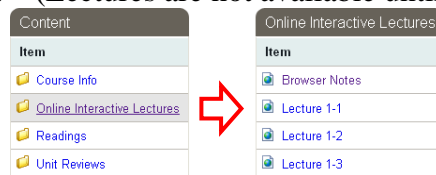
Accessing & Using the Online Interactive Lectures

1. Login to K-State Online. <http://public.online.ksu.edu/>
2. Navigate to the MATH010 Homepage, read any posted info, and then click Files & Content.

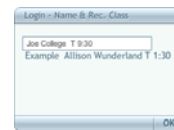


Note that you may use the Assignments & Grades link to check your scores as they are posted.

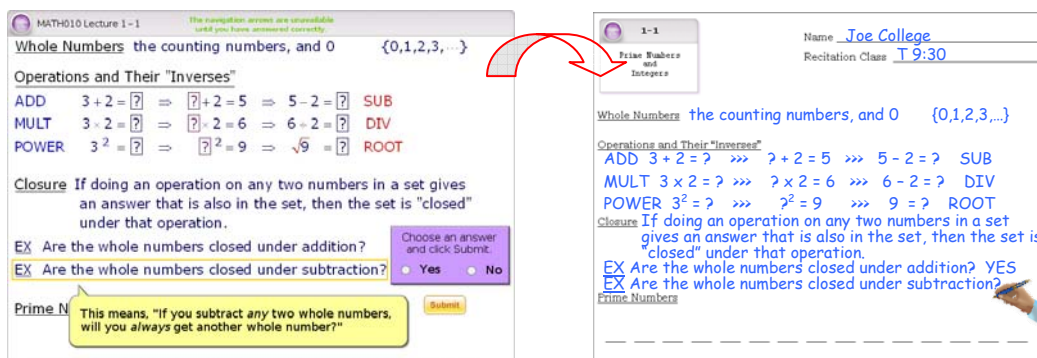
3. Click Online Interactive Lectures. (On your first visit, click Browser Notes for configuration info.)
Click the lecture you want view. (Lectures are not available until the date in the Course Schedule.)



4. If you are viewing the "Credit Version" you will see a sign-in popup.
Enter your name and recitation day/time, then click OK.
If you are viewing the "Review Version" you will not sign-in.



5. Each lecture begins with a short video clip related to the topic, followed by some general instructions. Use the two Lecture Outline pages from the course packet to take the notes as they are given. As you proceed, you will be asked questions which you must answer correctly to progress. You should always try your best to answer each question. You are not penalized for a wrong response, and you get many opportunities to try again. Feedback is given to help you answer correctly. For the "Credit Version" be sure to continue all the way to the last slide or you will not receive credit for your work.



MATH010 Lecture 1 - 1



END OF MATH010 LECTURE 1 - 1
Your successful completion of this activity
has been emailed to your instructor.
You may exit your browser.