



INSIDE

Events

- KIE Conference
- African Studies Symposium
- Education Summit cont.
- International Education Week

At K-State

- International Buddies Update
- International Housing Committee
- Photo Contest
- Best Practices in Faculty-Led
- Featured Faculty-Led Program
- International Recruiting Success

Abroad

- Kansas to Kenya
- K-State India Office



Dr. Peter McPherson and Dr. Emmanuel Oritsejafor in Kigali, Rwanda.

African Regional Higher Education Summit

Dr. Kristine A. Young
Interim Associate Provost

I'm writing this letter having just returned from Kigali, Rwanda, where I represented K-State at the **Africa Regional Higher Education Summit** sponsored by USAID, October 21-24, 2008. K-State was well represented at the Summit, as Dr. Ike Ehie, College of Business Administration, and Dr. Myra Gordon, Associate Provost for Diversity and Dual Career Development, were invited co-presenters for the event.

The title of the Africa Regional Higher Education Summit was **"Strengthening Africa's Human and Institutional Capacity for Prosperity and Global Competitiveness."** The three-day event sought to address innovative approaches to meeting the challenges and needs of the higher education community in Africa; to learn from each other by sharing best practices in partnering; and to foster mutually beneficial partnerships initiated before and during the summit. Speakers and participants discussed how higher education influences human and institutional capacity development, and plays a role in preparing Africa for economic growth and development.

The summit participants were encouraged to foster, develop and expand **partnerships and alliances** in order to strengthen Africa's higher education institutions, by exploring five thematic areas:

- ICT in Higher Education
- Linking Basic and Higher Education
- Food Security
- Entrepreneurship and Economic Growth
- Health and Human Capacity Development

The Summit was attended by over 125 leaders of higher education from **25 African nations**, as well as 100+ administrators and faculty from U.S. institutions, and representatives from the World Bank, the Gates Foundation, USAID, NASULGC, the Partnership for Higher Education in Africa, ACE, the Aga Khan Foundation, the Corporate Council on Africa Agribusiness Initiatives, the Orphans of Rwanda, and others.

Following the Opening Ceremony, with formal remarks by **Margaret Spellings**, U.S. Secretary of Education and Dr. Daphrose Gahakwa, Minister of Education of the Republic of Rwanda, Drs. Ehie and Gordon presented the K-State – UNILAG partnership as one example of best practice.

Ehie and Gordon are co-project directors of the **Kansas State University – University of Lagos (UNILAG)** partnership. K-State is working with UNILAG to bolster UNILAG's capacity to produce high-quality undergraduate and graduate students from the Faculty of Business Administration. These students are very much needed to meet the workforce needs of the contemporary Nigerian private sector. This **Higher Education Development (HED) partnership** is a component of and a complement to a broader Global Development Alliance supported by USAID/Nigeria. The K-State - UNILAG program evolved out of Nigerian private companies that include Microsoft, Cadbury, and Nestlé interest in building the capacity of local business schools. By working with these schools, USAID is strengthening struggling undergraduate Business and MBA programs, realigning curriculum with private sector needs,

KIE Conference

Maria Beebe

On September 22, the Kansas State University hosted the Kansas International Educators semi-annual meeting. This organization is affiliated with NAFSA – Association of International Educators whose mission is to promote international education and provide professional development opportunities to the field.

This is the third time in the past decade that K-State has hosted this event. Approximately 70 international educators from across the State attended. Various sessions were conducted by K-State faculty and staff as well as government officials from the Student and Exchange Visitors Program and the Kansas Department of Motor Vehicles. Presentations included the following:

Keynote address by Rolf Potts, author of *Vagabonding* and *Marco Polo Didn't Go There*. Rolf Potts has traveled to and reported from over fifty different countries around the world and has written for many major publications, including National Geographic and the New York Times Magazine. He is also a contributor to National Public Radio.

Topics Included:

Real ID and Driver's License Issues: Melvin Smoke, Kansas Dept. of Motor Vehicles

Do You Speak America? – Ways to Reduce Barriers in Intercultural Interactions: Dr. Young Ok Young, K-State Dept. of Communication Studies, Theatre and Dance

Health & Safety in Study Abroad: Liz Ward, K-State Study Abroad

Resources for Assisting International Students with Interviews, Resumes and Job Searching Roundtable: Mary Ellen Barkley, K-State, Career and Employment Services

Helping International Students with Cultural Adjustment: Ketty Rebbert and Chen Hua Wu, K-State English Language Program

SEVP Questions and Answers: Robert Rochester and Quinton Eaton, Student and Exchange Visitor Program Officers.

African Studies Symposium

David Hartnett

On March 30-April 1, 2009, K-State will be hosting a major international conference entitled African Issues Symposium: Food Security, Environmental Sustainability, and Human Health. This will be the first of a series of biennial conferences on various African issues and topics planned by the K-State African Studies Center. As the title indicates, the themes of this year's meeting will be the issues of agriculture and food security, environmental conservation and sustainability, and the many diseases and other health challenges facing the continent.

This conference will bring together prominent international experts on Africa and leaders in the natural and social sciences to address these key issues. The gathering of many students and scholars from K-State, other U.S. institutions, and abroad will provide a valuable forum for dialogue, for addressing the inter-connections between these agricultural, ecological, and social issues facing Africa, and for jointly identifying solutions and proposing to African policy makers a plan for the way forward.

The 3-day conference will include invited keynote speakers from Africa, Europe, and the U.S. as well as contributed presentations and poster sessions. The meeting is being organized and funded by the African Studies Center with additional support from the Office of International Programs, the K-State Institute for Grassland Studies, and several departments and colleges. The K-State African Studies Center was established in 2006 to promote teaching about Africa, to increase opportunities for students and faculty through K-State-Africa institutional partnerships, and to enhance multi-disciplinary collaboration and synergy among the many faculty members across the campus who teach and conduct research in or about Africa. For more information about the upcoming conference, visit

www.k-state.edu/africanstudies.

LEARN MORE!

<http://ksu.edu/oip>

More information about all things international can be found online!

'Education Summit' continued

and linking graduates with attractive employment opportunities.

On Thursday, October 23, Drs. Gordon and Ehie hosted a **K-State reception** for Summit attendees at the Top Tower Hotel in Kigali. Several dozen representatives from African universities

attended, as well as **NASULGC President Peter McPherson**, **NASULGC Associate Vice-President for International Development, Montague Demment**, and **Anne-Claire Hery, COO, Africa-U.S. Higher Education Initiative**. The Top Tower Hotel is the newest hotel in Kigali, and the K-State reception was the first formal event sponsored in the hotel – a rousing success!

We were able to connect with the leaders of many African universities, and there is a great deal of interest in **strategic partnering** with K-State in such areas as Soil and Water Conservation, Human Resource and Faculty Development, Improved Food Production, and Developing and Enhancing Extension. In the near future, Ehie, Gordon and I will be presenting complete information about the Summit and potential partnerships to the K-State community. We'll keep you posted on this.

An important portion of the Summit focused on the **Africa-U.S. Higher Education Initiative** and the Request for Applications for Planning Grant funding, sponsored by NASULGC and USAID. The RFA will be announced in mid-November 2008, with an early February 2009 application deadline. Planning grants of \$50,000 will be awarded to twenty U.S. institutions of higher education to encourage the development of long-term partnerships between U.S. and

Sub-Saharan African institutions of higher education. It is the wish that the 20 winning applications will have the opportunity to compete for further funding to develop the plans. **Planning grant applications** will be limited to two proposals from each U.S. institution. K-State planning grant applications will be coordinated by the Office of Research and Sponsored Programs under the direction of Dr. Jim Guikema in order to bring together efforts on a university-wide basis. Again, once full information on the **planning grant competition** becomes available, we will be sharing details with the K-State community via the OIP listserv and website.



Dr. Ike Ehie and Dr. Myra Gordon at the are co-project directors of the K-State - University of Lagos (UNILAG) Partnership.

This academic year has evolved into the year of Africa at K-State. The **KSU African Studies Center** is hosting an international **African Issues Symposium** on food security, environmental sustainability, and human health during the Spring 2009 semester. Please see Dr. David Hartnett's article in this issue of the **OUTLOOK** for more details, or go online to the website at www.ksu.edu/africanstudies.

On a side note, I was able to visit the **Rwanda Genocide Memorial** in Kigali, during my visit to Rwanda. It is amazing to see the progress Rwanda has made in the 15 years since the genocide – **Kigali is a beautiful, clean city**, with much evidence of new development and growth. (Plastic shopping bags are banned in the entire country of Rwanda!) Many of the young people who met us at the airport and served as greeters for the Summit are **survivors of the genocide**, many of them orphaned by the violence. What a wonderful testament to the strength of the human spirit! I believe I can speak for Drs. Ehie and Gordon as well as myself when I say, "You **MUST** visit Rwanda!"

International Education Week November 17-21, 2008

Saturday, November 15, 2008

International Food Festival

5:30-7:00 p.m. or 7:30-9:00 p.m.

ECM Cross Roads

1021 Denison Avenue

\$6 for students; \$18 for community

Monday, November 17, 2008

ALL THINGS INTERNATIONAL FAIR

10 a.m. to 3 p.m.

K-State Union Courtyard

Report on the African Regional Higher Education Summit

Brown Bag Lunch Presentation

12:00-1:30 p.m.

Hemisphere Room

Hale Library

Tuesday, November 18, 2008

Vernon Larson Luncheon Lecture

11:45 a.m. Holiday Inn Ballroom

Dr. Wayne Goins, Associate Professor of Music

"The KSU Jazz Ambassadors in South America: Bebop Meets Bossa Nova"

Wednesday, November 19, 2008

Peace Corps Event

4:00 p.m. Little Theater, K-State Union

Speaker Panel of K-State Peace Corps Volunteers

China Night

6:00 p.m., K-State Alumni Center

Dinner, Speaker Panel, and Entertainment

Thursday, November 20, 2008

Study Abroad First Steps Session

4:00 p.m. K-State Union Courtyard

Friday, November 21, 2008

International Educator Award Reception

3:00 p.m.

Hemisphere Room

Hale Library

Coffee Hour: Columbia: A Hidden Paradise

4-5 p.m. International Student Center

Coffee Hour is an informal forum for international students to showcase their country.

International Buddies Update

Leah Peppiatt

The International Buddies Program, halfway through the third semester since its inception, is charging ahead with a record number of participants. The program, which pairs international students with domestic students, not only helps to ease the transition to K-State for international students, but it also allows students from a variety of backgrounds to learn about another culture, practice a foreign language, and simply make lasting friendships. This semester, International Buddies is doing so with over 700 participants.

Unlike previous semesters, when the number of domestic participants greatly overshadowed the amount of international students involved, the numbers are currently neck-and-neck. International student involvement continues to be strong, with representatives from over forty different countries. Furthermore, many of these students request to be paired with second and third buddies, eager to meet more students from different backgrounds.

As International Buddies forges ahead with unprecedented involvement, Friends of International Programs has graciously stepped in and provided financial support for Buddies' game night activities. Friends' financial support is pivotal to the success of International Buddies, and for that we are extremely grateful!



International Buddies enjoy ice cream at the spring social.

<http://ksu.edu/oip/buddies>

International Housing Committee

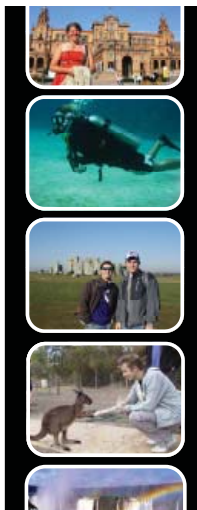
Derek Jackson and Sara Thurston-González

In June, a new committee was formed to facilitate and share more communication on international students and housing issues. The committee is composed primarily of staff members from both the Office of International Programs and Housing and Dining Services. In addition, there is representation from Undergraduate Admissions and the Graduate School. As a result of the meetings numerous new initiatives emerged. They are as follows:

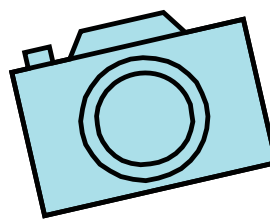
- 1) International Student Center staff presented at two different staff trainings for Housing and Dining staff members.
- 2) Housing and Dining Services hosted an information table on two separate occasions to provide information to international students during orientation.
- 3) International students volunteered to help translate and assist with the

- housing check-in procedures.
- 4) Airport shuttles from Kansas City were coordinated with residence hall staff to prepare them for the student arrivals.
- 5) A housing information sheet was translated into multiple languages.
- 6) Derby Dining Hall started serving meals 12 days earlier to accommodate the early arrival of the growing international student population.
- 7) When visiting with students, both domestic and international, they report high satisfaction with their new roommates.
- 8) Approximately 275 international students now call the residence halls home.

In general, the meetings create an opportunity to think about how we can welcome and serve students in the best possible way. This committee has already begun to discuss the arrivals of new students in January and other ways that continuous service can be the best possible for international students.



International Photo Contest



Do you enjoy photography?
Friends of International Programs is sponsoring a photo contest for K-State students!

Students who are U.S. citizens may submit photos that represent their view of the world, and international students at K-State may submit photos of their view of U.S./K-State culture. Both categories will have three winners.

First Place-\$100
Second Place-\$75
Third Place-\$50

<http://ksu.edu/oip/friends/events.html>

Best Practices in Faculty-Led Programs

Liz Ward and Rose Redington

The Study Abroad Program celebrated faculty success stories and best practices in group study abroad at a recent event held for interested faculty. Approximately forty faculty members from across campus came together to discuss plans for leading group programs abroad. The faculty luncheon centered around a panel of faculty alumni, who answered questions about planning, preparation, health and safety, and in-country realities for leading group study abroad. Panelists were faculty members from across campus who have led programs to Asia, Australia, Europe, and Latin America. Panelists included: Dr. Swinder Janda (Business), Dr. Bradley Shaw (Arts & Sciences), Dr. Robert Clark (Arts & Sciences), Dr. Peggy Honey (Human Ecology), and Dr. Socorro Herrera (Education). In addition, Rose Redington and Liz Ward discussed international programs

support and next steps in planning.

Faculty responses to a follow-up survey were very positive. In particular, faculty comments focused on the benefits of learning from faculty alumni and the potential for building connections with those interested in and/or planning similar courses. The Office of International Programs is focused on being a leader in facilitating these connections and has begun developing an online listserv to connect prospective faculty with others interested in leading programs to similar destinations. Study Abroad and the Office of International Programs looks forward to building on this experience and continuing to work with faculty to strengthen these bridges in the year to come.

More Information about Faculty-Led Programs and K-State Study Abroad is available at <http://www.ksu.edu/studyabroad>

Featured Faculty-Led Program

This coming spring, Dr. Leslie Hannah will lead an Alternative Spring Break Program to Agua Prieta, Mexico. This program will provide the opportunity to engage in service-learning activities with underprivileged children and adults while enjoying an exotic destination. Students will do volunteer work in an orphanage, shelter, or an agriculture project. There will also be time to enjoy historical landmarks in both Mexico and Arizona.



Success from International Recruiting

Somer Chalfant

The Office of International Pre-Admission and Recruiting is pleased to report excellent results from recruiting efforts over the past year. The university's record fall enrollment of 23,520 includes 1,431 international students, up from 1,220 last year. This is an all-time record, which includes 431 students from China.

We continue to see great success in recruiting students through the K-State China Office, located in Beijing. Our office works closely with the staff there to support students during the application process. Recruiting efforts by the China Office have led to a dramatic increase in Chinese undergraduate applicants, including 201 applicants for the upcoming Spring 2009 semester up from just 54 applicants for Spring 2008.

In an effort to further increase the international student population on

campus and maintain the theme of diversity and internationalization that K-State is striving to achieve, we have also branched out to several other countries to establish country offices and representatives who are working to recruit students for K-State. We have now established the K-State India Office in New Delhi, as well as recruiting representatives in Korea and Thailand.

We are currently working to train and educate our new associates to maximize recruiting efforts in these countries. We are already seeing results from these newly established connections with 9 applicants for the Spring 2009 semester from the K-State India Office, 2 applicants from the Korean representative and one from the representative in Thailand. We expect to see these numbers continue to grow. Results that we have seen from establishing ties in these countries are not

limited to recruiting offices and representatives. There are now K-State China, K-State India and K-State Korea websites, which we are crediting with a drastic increase in student inquiries being received over email from each of these countries. These websites allow K-State to reach much further than we ever have before, and we are finding that many students are taking advantage of these new services. The new websites complement the ongoing online advertising that we have already established, and we continue to field thousands of student inquiries each year in our office here on campus.

So, as you can see, all of these new endeavors have led to a very busy year. However, we are very excited to celebrate the success of the past year, welcome all of the new students, and expand our efforts to bring students from all around the globe to K-State.

KANSAS TO KENYA: KNOWLEDGE FOR LIFE

Bill Hargrove, Director, KCARE

In June, Bill Hargrove led a team of K-State Extension professionals to Kenya to do training and community development work in collaboration with an international NGO, Comfort the Children, and to sign a Memorandum of Understanding with Jomo Kenyatta University of Agriculture and Technology (JKUAT). JKUAT is very similar to a Land Grant University, focusing on agriculture and technology and including an extension/outreach component in addition to teaching and research. Student and faculty exchanges and collaborative research and extension projects are envisioned between JKUAT and K-State.

The Kansas to Kenya K-State Extension team spent ten days working in Maai Mahiu, located about 30 miles northwest of Nairobi and one of the poorest HIV/AIDS-impacted towns in Kenya. Maai Mahiu is a town of about 30,000 people on the "AIDS Highway," a main truck route between Nairobi and Kampala, Uganda. About 60% of the population is HIV positive. The population is primarily Kikuyu. The greatest problems in Maai Mahiu include: lack of jobs/economic opportunity; trash and waste management; cost and shortage of water; prevalence of AIDS; and lack of educational opportunities. A large portion of young people do not complete secondary school due to relatively high costs of uniforms and books. CTC International, under the local leadership of Alison Costain, is making a strong commitment to improving life in Maai Mahiu through programs in education, environment, health, community development, and economic opportunity.

The K-State Extension team was comprised of:
 Tonya Bronleewe, Youth Development, Sedgwick County Extension
 Denise Dias, Family and Consumer Sciences Agent, Sedgwick County Extension
 Herschel George, Agriculture and Water Specialist, Franklin County
 Bill Hargrove, Director, KCARE, Team Leader
 Mary Meck Higgins, Human Nutrition Specialist, Manhattan
 Laszlo Kulcsar, Asst. Professor, Sociology Department, Manhattan



Extension Watershed Specialist Herschel George discusses principles of drip irrigation with Grandmothers' Association in Maai Mahiu, Kenya. Photo credit: W.L. Hargrove

Donna Martinson, Family and Consumer Sciences Agent, Geary County Extension
 Sandy Procter, Human Nutrition Specialist, Manhattan
 Ann Religa, 4H Agent, Harvey County Extension
 Carol George (Volunteer), Social Worker from Uniontown
 Mark Religa (Volunteer), Soil Conservationist, USDA-NRCS, Newton

We were organized into four teams coupled with local volunteers with CTC to conduct training and community development activities in Maai Mahiu, including:

1) "Shosho Shamba" (Grandmothers' Garden). Team members (H. George, Hargrove, Kulcsar, & M. Religa) developed a community garden aimed at meeting the nutritional needs of households where grandmothers are raising grandchildren whose parents have died of AIDS. The team worked alongside the grandmothers and demonstrated gardening practices such as composting, drip irrigation, organic gardening, and "bag" gardens. CTC volunteers were trained and will provide continuing support and technical assistance for the garden.

2) Nutrition Improvement. Team members (Higgins, Procter, and C. George) worked with local CTC community health workers to develop shopping lists and menus that would provide a minimum level of nutrition to HIV-positive individuals and families with disabled children. The team also worked through interpreters to educate and answer nutrition-related questions at an AIDS support group meeting.

3) Sewing and Small Business Development. Team members (Dias and Martinson) conducted workshops to teach mothers of disabled children sewing skills, which would enable them to make reusable shopping bags or other sewn items. The bags will be sold, giving mothers an income and the ability to provide better opportunities for their disabled children. Bags sold locally could reduce the number of plastic bags contributing to the community's trash problem.

4) Environmental Education. Team members (Bronleewe and A. Religa) trained Environmental Club sponsors and volunteers in the use of hands-on environmental curriculum so

that youth would be able to teach the principles of environmental conservation. Follow-up activities include promotion of RafikiLink (an internet-based environmental group) and involvement of Kansas EARTH teachers and students with those in Canada and Kenya, directly increasing opportunities for interaction of our students with a more diverse audience.

5) Good Shepherd Children's Home. Our team conducted health assessments and documentation for the children in the home (C. George and Martinson); assessed children's diets and developed a menu plan for improved nutrition (Higgins and Procter); assessed current food production from the home's garden and developed a plan for improving the production and value of the garden (H. George, Hargrove, Kulcsar, and M. Religa). Our team integrated our work into a Needs Assessment that was delivered to CTC for future fundraising and actions.

Alison Costain, Country Coordinator for CTC International, reports that the Grandmothers' Association is working each week in the garden and the tremendous growth of the irrigated food crops has certainly drawn attention from the broader community. CTC will do training workshops during the fall as community interest increases. In Mid-August, the harvest of the first 'fruits' occurred. The ladies are demonstrating their commitment by starting their own gardens at home, using what they are learning at the community garden.

The mothers of disabled children who learned to sew have progressed by leaps and bounds. They are producing about 30 shopping bags a day. Good Shepherd Orphanage is being supported by churches in Kansas who are providing resources to improve the diets of the children based on the nutritional guidelines developed by the K-State team. Alison reports that the children look healthier and happier. CTC staff is providing assistance to replant the orphanage garden and the goal is to have the orphanage self sufficient in food by Christmas. The K-State team provided resources for a new fuel efficient cook stove, which was delivered in late July. The improved stove uses about a third as much fuel wood as the open fire cooking method that was being use.

All of the K-State teams also demonstrated successful "train the

trainer" approaches by training local CTC volunteers who in turn train local citizens in Maai Mahiu. For example, CTC volunteers and community health workers are now using nutritional guidelines developed by the K-State team in home visits with HIV patients.

Finally, a K-State graduate student in Human Nutrition, Valerie Stull, participated with a volunteer medical team from Lawrence, KS in July, and conducted a survey of mothers who visited the free medical clinic, to evaluate food security.

K-State India Office

Jim Lewis
International Pre-Admissions Director

The Kansas State University India Office in New Delhi, India, opened on July 1, 2008. The job of the India Office will be to promote K-State throughout India. They started by setting up a K-State India website. You can find the K-State India website at: <http://www.kstate-india.us>

Since July, they have also been participating in student recruiting

fairs, developing links with selected high schools in India, and giving seminars about K-State. In addition, they have been developing a network of agents to further promote K-State and recruit students.

The Director of the K-State India Office is Mr. Raj Kapoor. He is assisted in the running of the office by Mr. Subhash Kapoor, Ms. Sunita Anand, and Ms. Divya Suneja.

India, like China, has a rapidly growing economy. The middle class is getting larger in both countries. Many parents and students are very interested in finding good universities. The focus for the K-State India Office will be to recruit undergraduates, particularly from this growing middle class.



We welcome Raj Kapoor and the K-State India Office staff to the K-State family!

International Education Week

CHINA NIGHT



Sponsored by

Friends of International Programs

and



Speaker Panel, Dinner,
& Entertainment by the
Chinese Student Association
Wednesday, November 19, 2008

6 p.m.

K-State Alumni Center
Tickets \$13
Available 304 Fairchild

Friends of International Programs at K-State

The Friends of International Programs at Kansas State University is a group of interested individuals dedicated to supporting the activities of the Office of International Programs by fundraising for public and individual groups.

The Friends organization connects K-State alumni, faculty, staff, students and community members in order to create a global community committed to excellence in all international endeavors to improve international understanding. Learn more at www.ksu.edu/oip/friends.

YES! I would like to join the Friends of International Programs.

Name(s): _____

Address: _____

City: _____ State: _____ Zip: _____

Daytime phone: _____

Email: _____

Please mark a committee you'd be willing to volunteer for:

- Membership Fundraising
 Hospitality Nominating

What countries are you most passionate about:

Enclosed is my check or credit card authorization for:

- \$1,000 -- Jet Setter \$500 -- Globetrotter
 \$250 -- Visa \$100 -- Passport
 \$50 -- Traveler \$25 -- Individual
 \$10 -- Student Other -- \$ _____

All gifts are tax-deductible to the extent allowed by law.

- Check enclosed, payable to KSU Foundation
 Please charge my credit card (Visa/MC/AMEX/Discover)

Card # _____ Exp. Date _____

Cardholder's signature _____

Please return to: **KSU Foundation**

**2323 Anderson Ave., Suite 500
Manhattan, KS 66502-2911**

WWW.KSU.EDU/OIP

Office of International Programs
Kansas State University
304 Fairchild Hall
Manhattan, KS 66505-1111
043
