



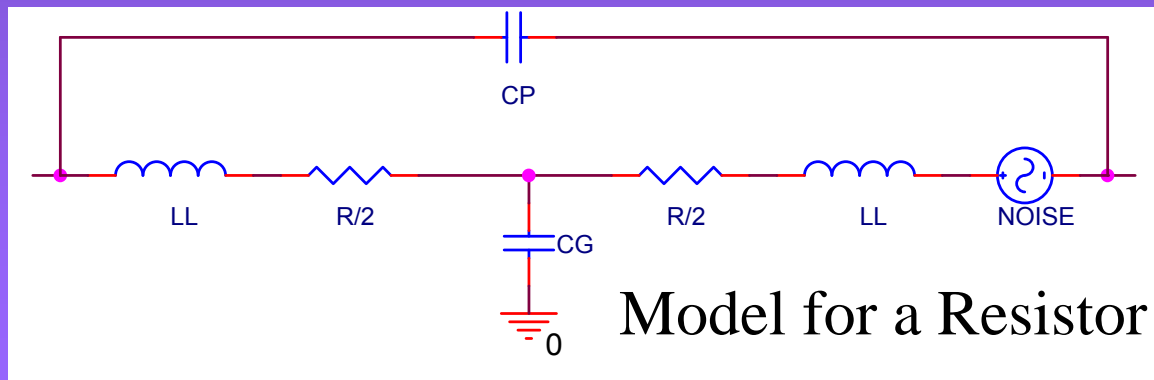
# “Real” components complicate modeling & design

- Tolerances
  - ◆ High precision or matched resistors are expensive
  - ◆ Hand “selects” are time consuming, therefore expensive and probably not “manufacturable”
  - ◆ Good designs account for (compensate?) component tolerances
- Temperature coefficients
  - ◆ +/- 100 ppm/°C or more for “stock”
  - ◆ Low TCR resistors are expensive
- Discrete values available (E24, E48, E96...)
  - ◆ You may not always be able to get the ratio you want
  - ◆ Parallel or series combinations acceptable under some circumstances
  - ◆ Potentiometers are imprecise, high TCR, and drift – use only when necessary
- **Spice DOES NOT model reality. It only models what you (or the developer of the model) tell it to.**



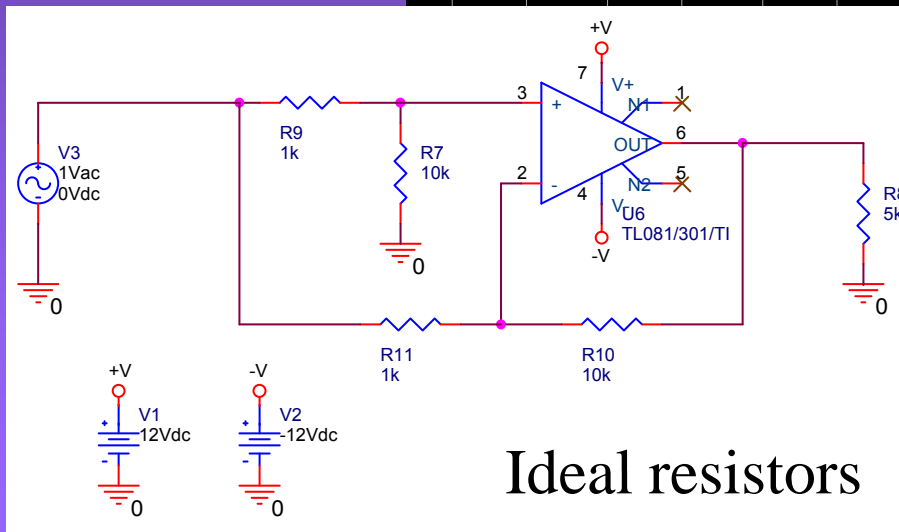
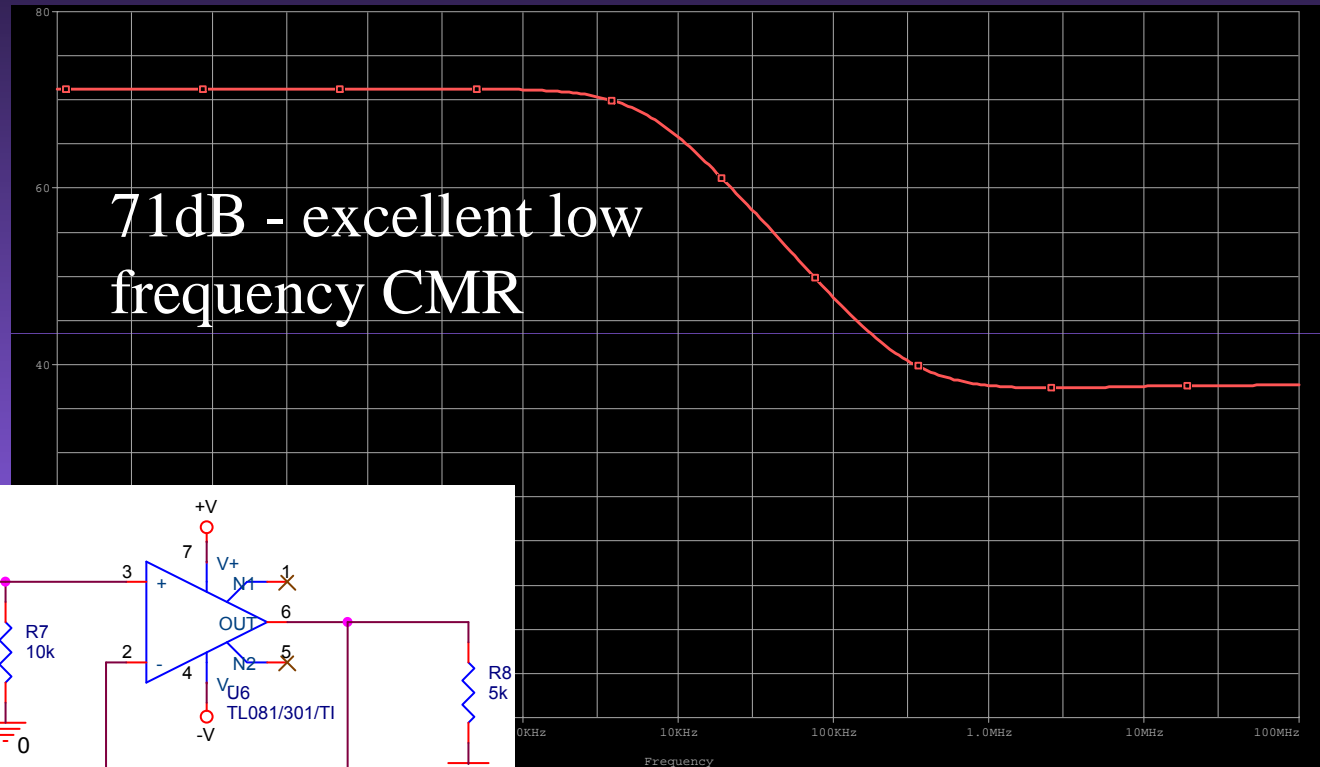
## There is no such thing as “Ideal”

- All passives have parasitic R's , L's and /or C's
  - ◆ Component leads are inductive
  - ◆ There is capacitance from the body to ground and between the leads
  - ◆ There is capacitance between the turns of an inductor
  - ◆ There is resistance in the inductor winding
- Resistors have noise  $v_n = (4kTR\Delta f)^{1/2}$
- Capacitors have memory (soakage), leakage, and dissipation that are a function of the dielectric properties and construction



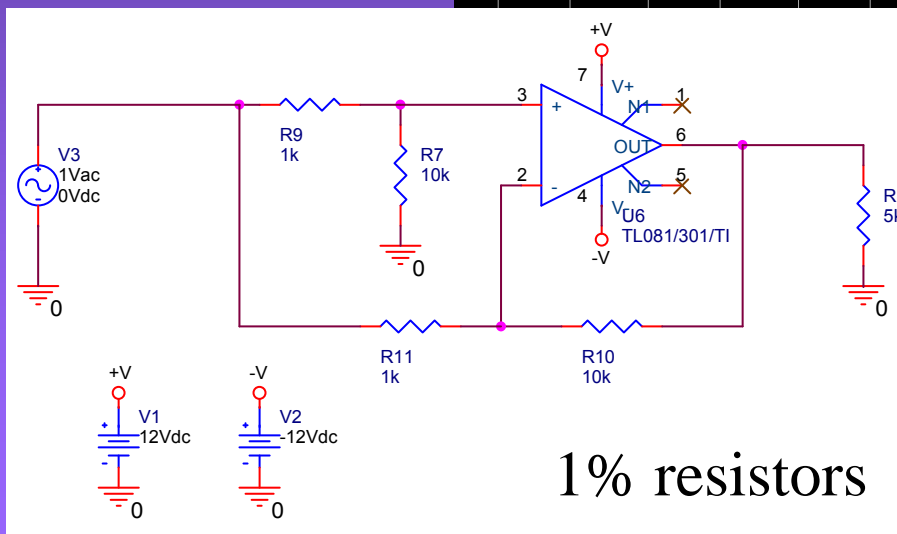
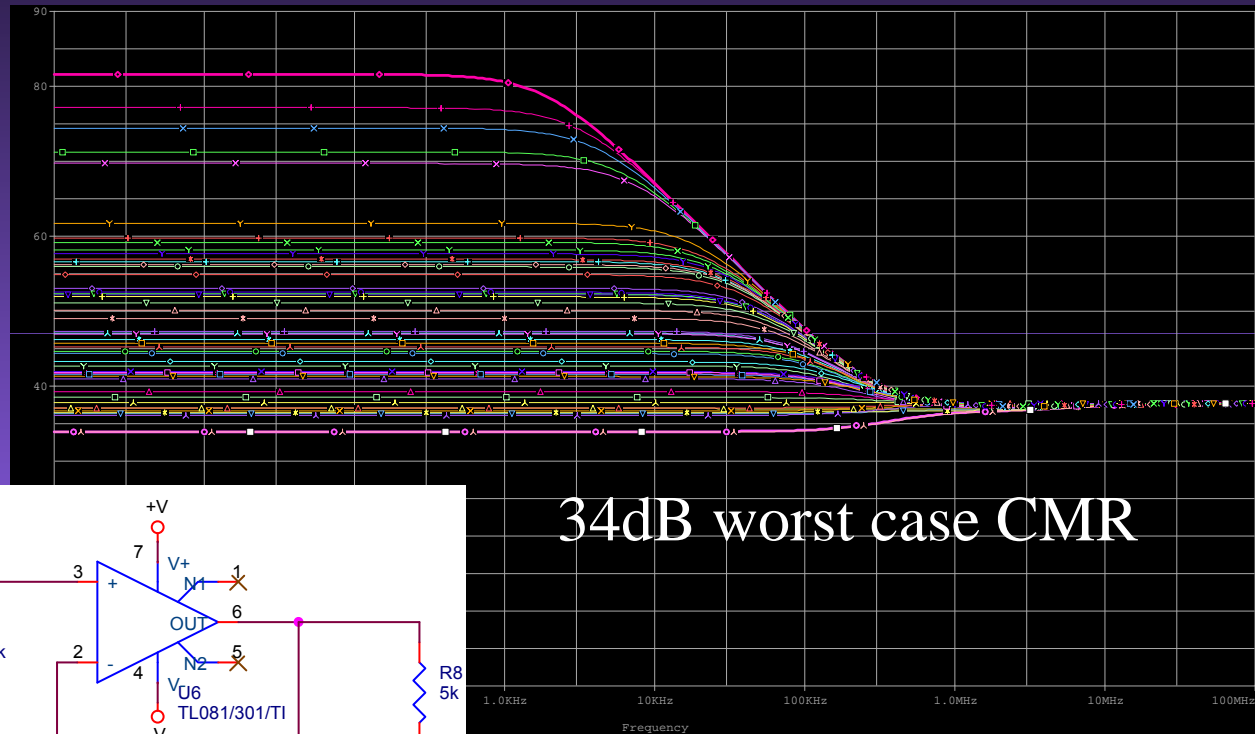


# Difference amplifier common mode rejection (perfect resistor matching)





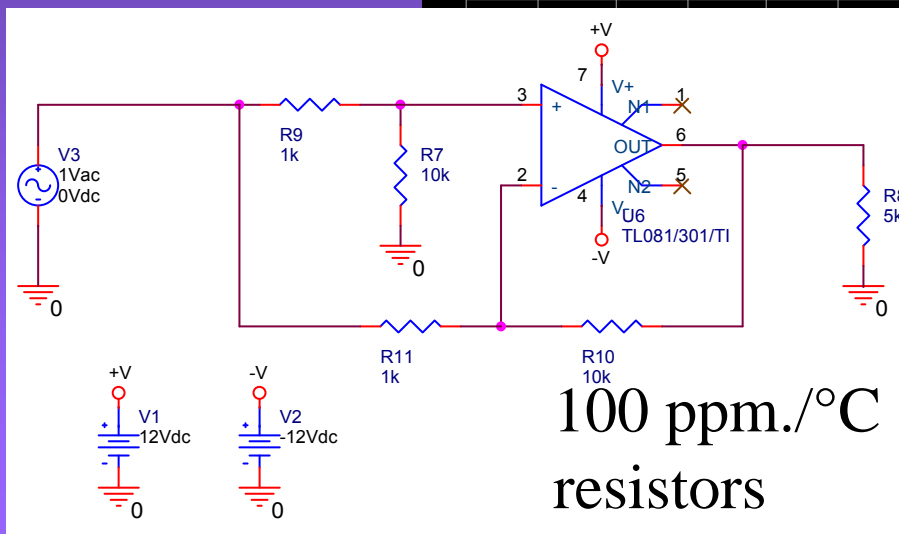
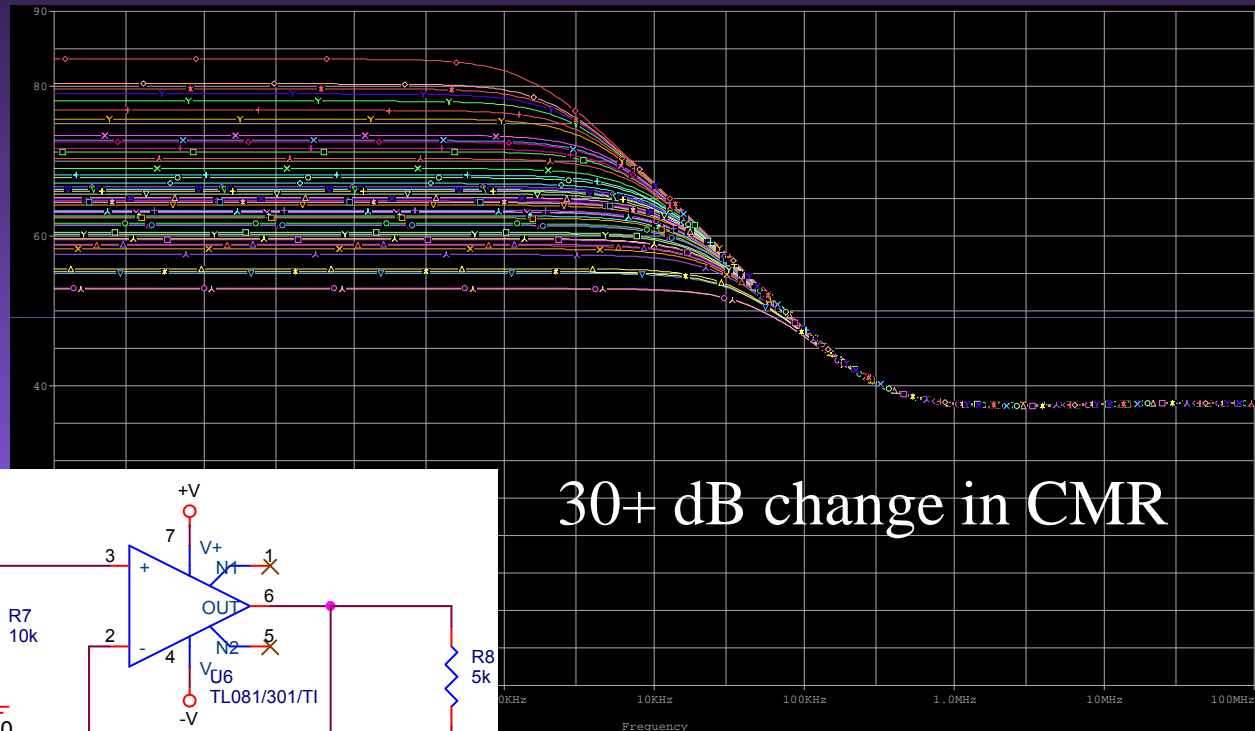
# Difference amplifier common mode rejection (1% resistor tolerances, Monte Carlo analysis)



This does not account for  
Variations due to temperature



# Difference amplifier common mode rejection (10°C temperature change, 100ppm/°C resistors)



30+ dB change in CMR

A 16-bit ADC requires  
a signal with >96dB SNR  
or you are just digitizing noise

EDL