

Habitat Model for Species: Western Plains Garter Snake

Thamnophis radix haydenii

[Distribution Map](#)
[Habitat Map](#)

Landcover Category

0 - Comments

Collins, 1993

Burt and Hoyle, 1935

Clarke, 1956

Tihen and Sprague, 1939

Brumwell, 1951

Burt, 1927

[#KS GAP]

[#Reviewer]

30 m edge of selected wetlands (31,32,33,38,82).

02 - Oak-Hickory Forest

Gloyd, 1928

05 - Ash-Elm-Hackberry Floodplain Forest

Gloyd, 1928

08 - Bur Oak Floodplain Woodland

Gloyd, 1928

17 - Tallgrass Prairie

Collins, 1993

[#Reviewer]

18 - Sand Prairie

Collins, 1993

Platt, 1998

Platt, 1985

19 - Sandstone Prairie - not mapped

Collins, 1993

20 - Western Wheatgrass Prairie

Collins, 1993

22 - Mixed Prairie

Collins, 1993

24 - Alkali Sacaton Prairie

Collins, 1993

25 - Shortgrass Prairie

Collins, 1993

26 - Grass Playa Lake

[#KS GAP]

27 - Salt Marsh/Prairie

[#KS GAP]

28 - Spikerush Playa Lake

[#KS GAP]

Habitat Restrictions

Comments

"prefer open grassy prairies, particularly along edges of streams, marshes, and lakes"

Distribution only

Distribution only

Very abundant in subaquatic areas and moist lowlands near the water, but is not confined to them. Not commonly seen on the high plains, but found around any temporary rain ponds with frogs and toads, regardless of distance to permanent water.

No useful habitat information

No useful habitat information

Distler: common on Sedgwick Field Station.

under stones on wooded hillsides

under stones on wooded hillsides

under stones on wooded hillsides

Platt: Although it has been reported in eastern Harvey County, I have never caught one there. I suspect it is uncommon in much tallgrass prairie.

29 - Playa Lake

[#KS GAP]

30 - Low or Wet Prairie

[#KS GAP]

31 - Freshwater Marsh

[#KS GAP] Map 30 m edge.

32 - Bulrush Marsh

[#KS GAP] Map 30 m edge.

33 - Cattail Marsh

[#KS GAP] Map 30 m edge.

38 - Forb Playa Lake

[#KS GAP] Map 30 m edge.

39 - Pondweed Aquatic Wetland - not mapped

[#KS GAP] Map 30 m edge.

70 - Weedy Marsh

[#KS GAP] Map 30 m edge.

81 - Urban Areas

Gloyd, 1928

common in town about dooryards, gardens, and parks.

82 - Water (Lake)

[#KS GAP] Map 30 m edge.

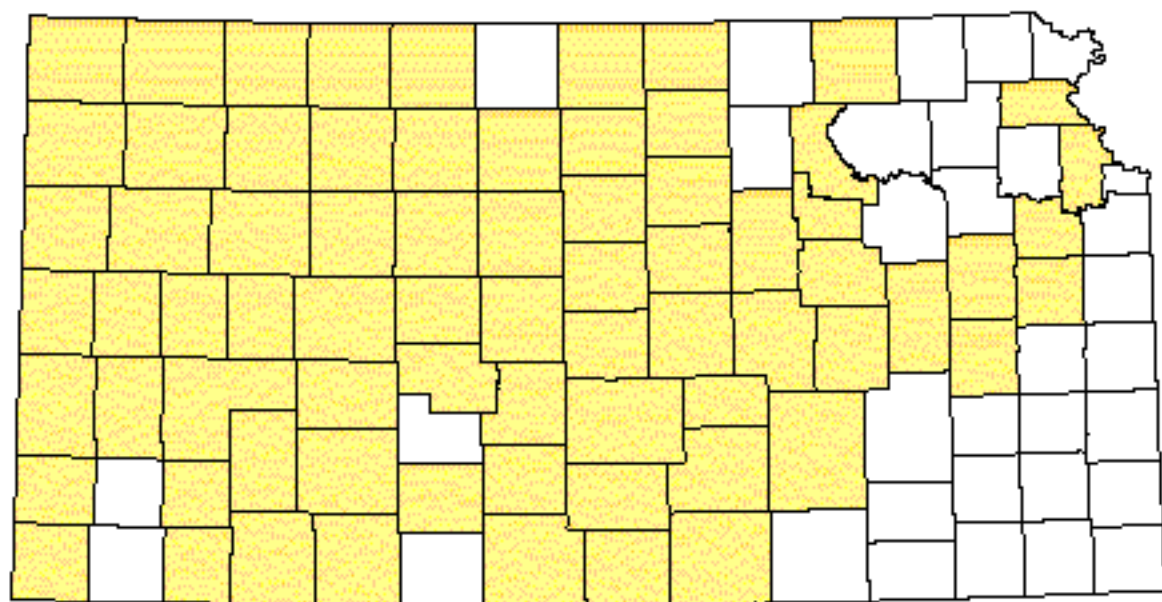
82 - Water (River)

[#KS GAP] Map 30 m edge.

Reference List

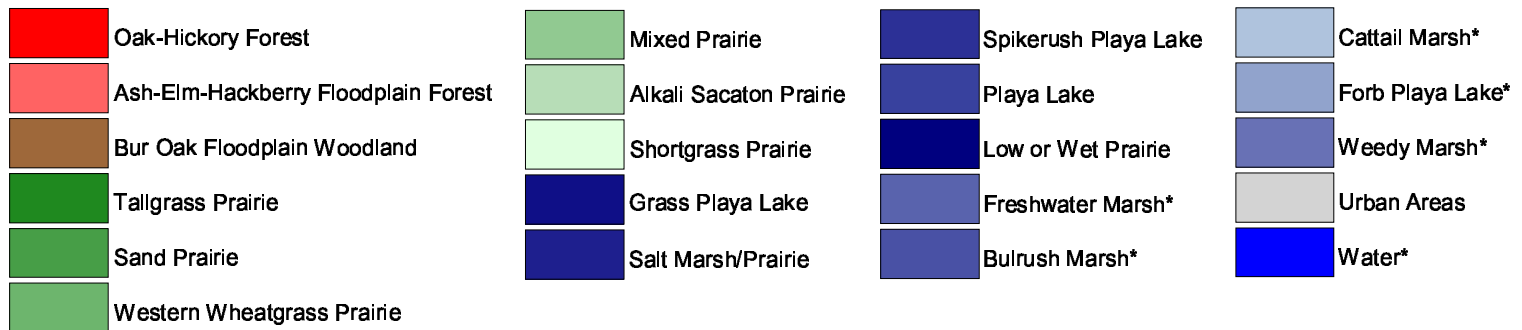
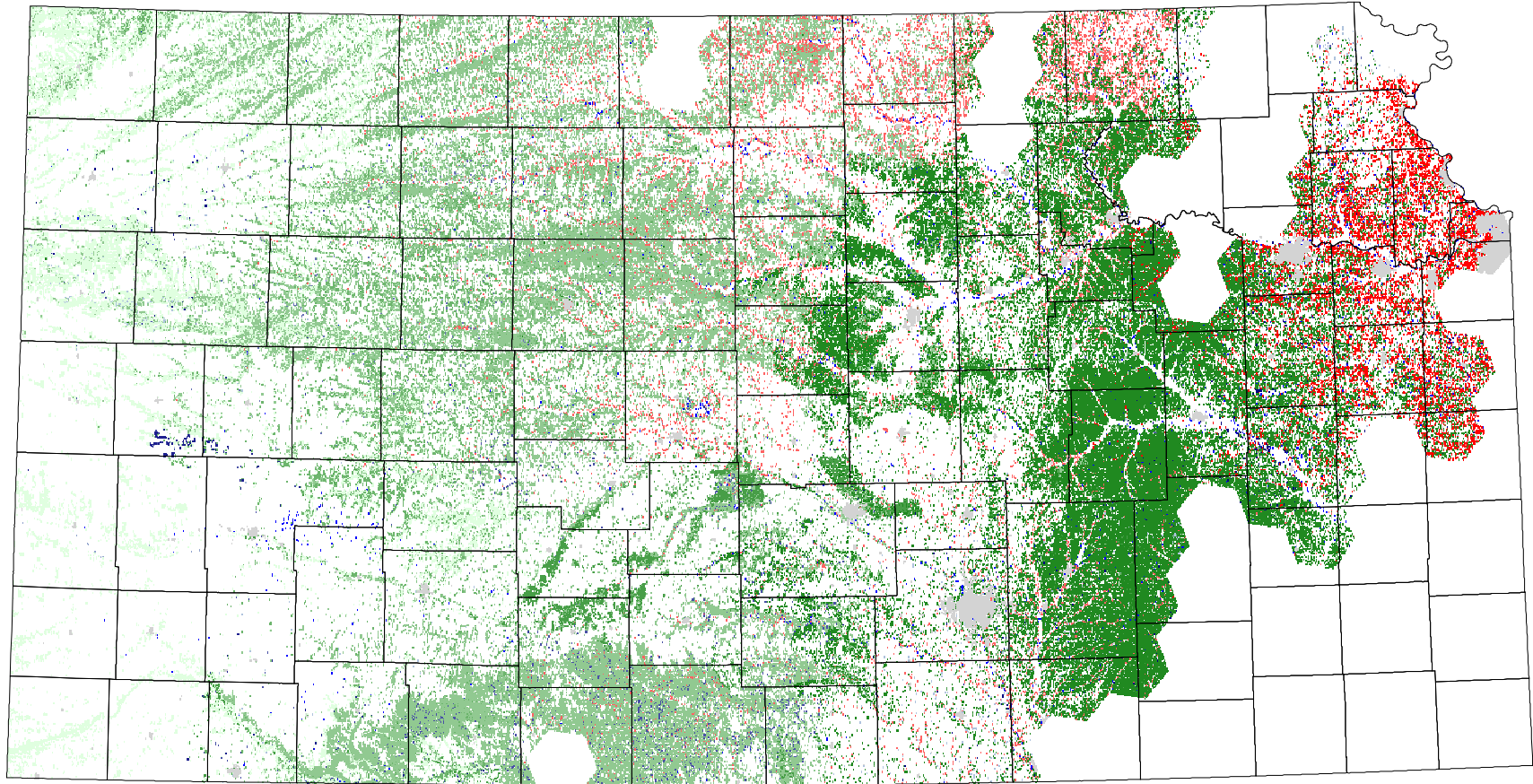
1. Brumwell, M. J. 1951. An ecological survey of Fort Leavenworth Military Reservation. *American Midland Naturalist* 45(1):187-231.
2. Burt, C. E. 1927. An annotated list of the amphibians and reptiles of Riley County, Kansas. *Occasional Papers of the Museum of Zoology, University of Michigan* 189:1-9.
3. Burt, C. E. and W. L. Hoyle. 1935. Additional records of the reptiles of the central prairie region of the United States. *Transactions of the Kansas Academy of Science* 37:193-216.
4. Clarke, R. F. 1956. Distributional notes on some amphibians and reptiles of Kansas. *Transactions of the Kansas Academy of Science* 59(2):213-219.
5. Collins, J. T. 1993. *Amphibians and reptiles in Kansas*. University Press of Kansas, Lawrence, Kansas, USA.
6. Gloyd, H. K. 1928. The amphibians and reptiles of Franklin County, Kansas. *Transactions of the Kansas Academy of Science* 31:115-141.
7. Platt, D. R. 1985. Population trends and habitat assessment of snakes and lizards in south central Kansas. Contract # 80 Final report. Kansas Fish and Game Commission, Pratt, Kansas, USA.
8. _____. 1998. Monitoring population trends of snakes and lizards in Harvey County, Kansas. Kansas Department of Wildlife and Parks, Pratt, Kansas, USA.
9. Tihen, J. A. and J. M. Sprague. 1939. Amphibians, reptiles, and mammals of the Meade County State Park. *Transactions of the Kansas Academy of Science* 42:499-512.

Western Plains Garter Snake



 Range from Collins, 1993

Western Plains Garter Snake



* 30 m edge