

Habitat Model for Species: Slender Glass Lizard

Ophisaurus attenuatus

[Distribution Map](#)
[Habitat Map](#)

Landcover Category

0 - Comments

Clarke, 1965

[#KS GAP]

30 m edge of selected forests and woodlands (7,8,9)
adjacent to selected grasslands (17,18,22,40,41).

[#Reviewer]

[#Reviewer1]

Habitat Restrictions

Comments

Grassy fields near wooded areas are preferred, usually where rocks and ledges are available. May be found under any sort of ground cover.

Whiles: Add Kiowa Co. : Collins 1995 KHS Newsletter 100:24-27. Add Comanche Co. : Collins 1998 KHS Newsletter 111:12-14.

Fitch Reservation: max. abundance 18 yrs. after livestock were removed. Fields dominated by brome grass and blue grass by then did not have many forbs. As forest invaded the former pastures, the habitat deteriorated and the species almost disappeared.

07 - Mixed Oak Floodplain Forest

Heinrich and Kaufman, 1985
outcrops on the edge of gallery forest

Map 30 m edge adjacent to selected grasslands. limestone

08 - Bur Oak Floodplain Woodland

Fitch, 1989
Heinrich and Kaufman, 1985
outcrops on the edge of gallery forest

Map 30 m edge adjacent to selected grasslands. limestone

09 - Mixed Oak Ravine Woodland

Heinrich and Kaufman, 1985
outcrops on the edge of gallery forest

Map 30 m edge adjacent to selected grasslands. limestone

12 - Sandsage Shrubland

[#Reviewer]

Rundquist

17 - Tallgrass Prairie

Fitch, 1989
Busby and Parmelee, 1996

18 - Sand Prairie

Platt, 1998

22 - Mixed Prairie

Fitch, 1989

40 - Non-native Grassland

Fitch, 1989

41 - CRP

Fitch, 1989

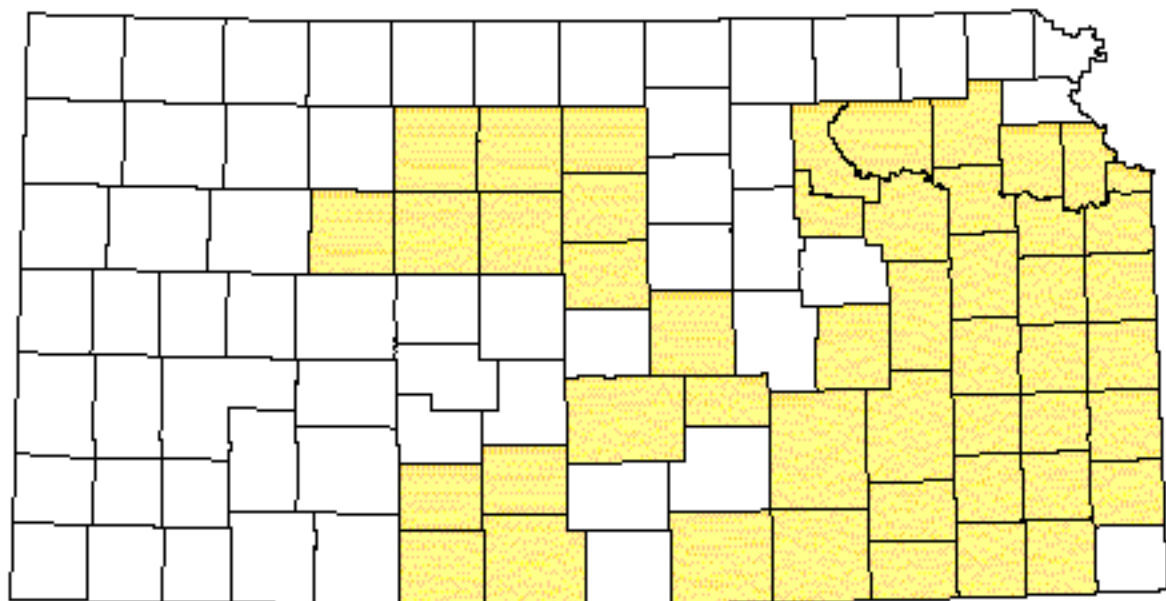
55 - Deciduous Woodland


Fitch, 1989

Reference List

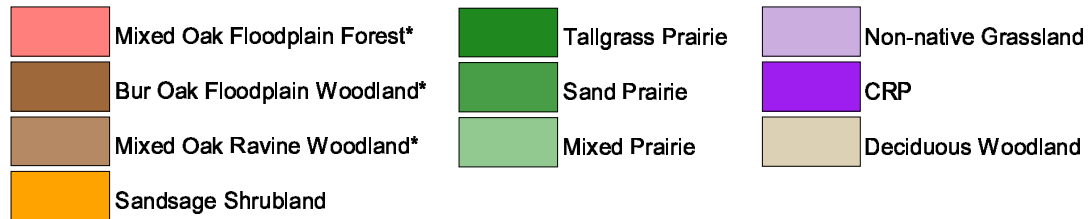
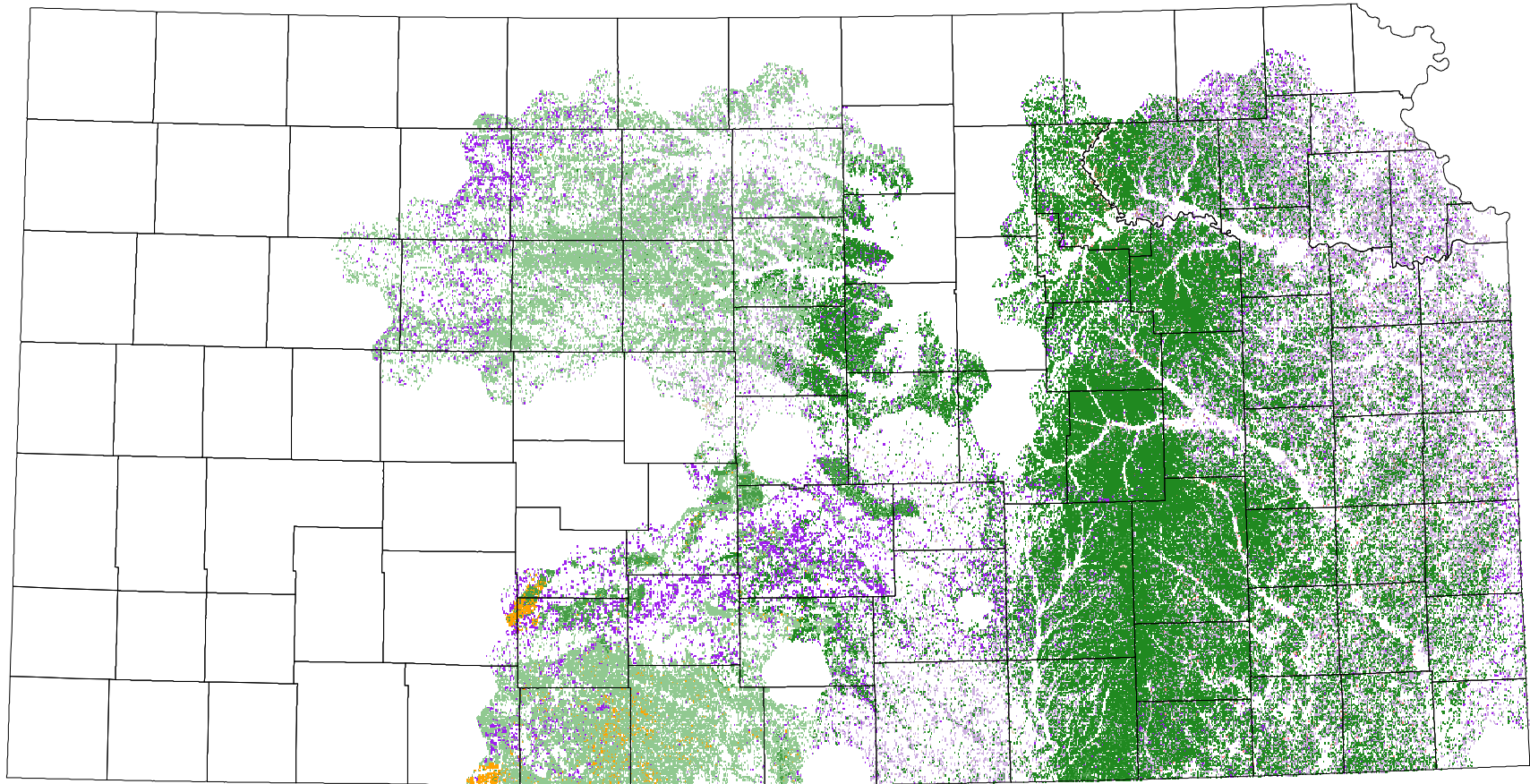
1. Busby, W. H. and J. R. Parmelee. 1996. Historical changes in a herpetofaunal assemblage in the Flint Hills of Kansas. *American Midland Naturalist* 135(1):81-91.
2. Clarke, R. F. 1965. Lizards in Kansas. *Kansas School Naturalist* 11(4):1-16.
3. Fitch, H. S. 1989. A field study of the slender glass lizard, *Ophisaurus attenuatus*, in northeastern Kansas. *Occasional Papers of the Museum of Natural History*. No. 125. University of Kansas, Lawrence, Kansas, USA.
4. Heinrich, M. and D. W. Kaufman. 1985. Herpetofauna of the Konza Prairie Research Natural Area, Kansas. *Prairie Naturalist* 17(2):101-112.
5. Platt, D. R. 1998. Monitoring population trends of snakes and lizards in Harvey County, Kansas. *Kansas Department of Wildlife and Parks*, Pratt, Kansas, USA.

Slender Glass Lizard



 Range from Collins, 1993

Slender Glass Lizard



* 30 m edge next to mapped grasslands