

# Habitat Model for Species: **Prairie Kingsnake**

*Lampropeltis calligaster calligaster*

[Distribution Map](#)  
[Habitat Map](#)

## Landcover Category

### **0 - Comments**

Boyd, 1988  
Webb, 1970  
Fitch and Shirer, 1971  
Rush and Fleharty, 1981  
Burt and Hoyle, 1935  
Clarke, 1956  
Tihen and Sprague, 1939

Gloyd, 1928  
Hall and Smith, 1947  
Platt, 1985  
Burt, 1927  
Fitch, 1958  
[#KS GAP]

30 m edge of selected forests and woodlands  
(2,3,5,6,7,8,9) adjacent to selected grasslands

[#Reviewer]

### **Habitat Restrictions**

### **Comments**

No useful habitat information

Distribution only  
Distribution only  
Only captured 1 prairie kingsnake. Habitat information not used in model.

No useful habitat information.  
No useful habitat information  
No useful habitat information

Platt: found in fencerows within cropland, mainly wheat fields (Platt 1998). Busby: add shortgrass prairie? - don't add based on other descriptions of using tall grass.

### **02 - Oak-Hickory Forest**

Brumwell, 1951  
[#KS GAP] Map 30 m edge adjacent to selected grasslands (17, 18, 22, 30, and 40).

"open woods"

### **03 - Post Oak-Blackjack Oak Forest**

Brumwell, 1951  
[#KS GAP] Map 30 m edge adjacent to selected grasslands (17, 18, 22, 30, and 40).

"open woods"

### **05 - Ash-Elm-Hackberry Floodplain Forest**

Platt, 1998  
[#KS GAP] Map 30 m edge adjacent to selected grasslands (17, 18, 22, 30, and 40).

added by Platt review.

### **06 - Cottonwood Floodplain Forest**

Platt, 1998  
[#KS GAP] Map 30 m edge adjacent to selected grasslands (17, 18, 22, 30, and 40).

### **07 - Mixed Oak Floodplain Forest**

Heinrich and Kaufman, 1985  
[#KS GAP] Map 30 m edge adjacent to selected grasslands (17, 18, 22, 30, and 40).

edge7 of 9 sightings were in open grassland, with single sightings in forest edge and shrubby habitats.

### **08 - Bur Oak Floodplain Woodland**

Heinrich and Kaufman, 1985  
[#KS GAP] Map 30 m edge adjacent to selected grasslands (17, 18, 22, 30, and 40).

edge7 of 9 sightings were in open grassland, with single sightings in forest edge and shrubby habitats.

### **09 - Mixed Oak Ravine Woodland**

Heinrich and Kaufman, 1985  
[#KS GAP] Map 30 m edge adjacent to selected grasslands (17, 18, 22, 30, and 40).

edge7 of 9 sightings were in open grassland, with single sightings in forest edge and shrubby habitats.

### **15 - Buttonbush (Swamp) Shrubland**

[#Reviewer]

Distler: observed twice within a buttonbush stream (marsh) habitat.

### **17 - Tallgrass Prairie**

Platt, 1998  
Clarke, 1958  
Heinrich and Kaufman, 1985

7 of 9 sightings were in open grassland, with single sightings in forest edge and shrubby habitats.

Busby and Parmelee, 1996  
Fitch, 1979

### **18 - Sand Prairie**

Platt, 1998

may be more common in ungrazed grass (Platt review).

### **22 - Mixed Prairie**

Brumwell, 1951  
[#Reviewer]

Busby: add Platt: would expect it in mixed prairie.

### **30 - Low or Wet Prairie**

Cink, 1994

### **40 - Non-native Grassland**

[#Reviewer]

Fitch: abandoned pastures with introduced brome grass and bluegrass dominant and growing more than a foot high. Presence of prey population including voles and native "mice" is probably more important than the dominant vegetation.

### **55 - Deciduous Woodland**

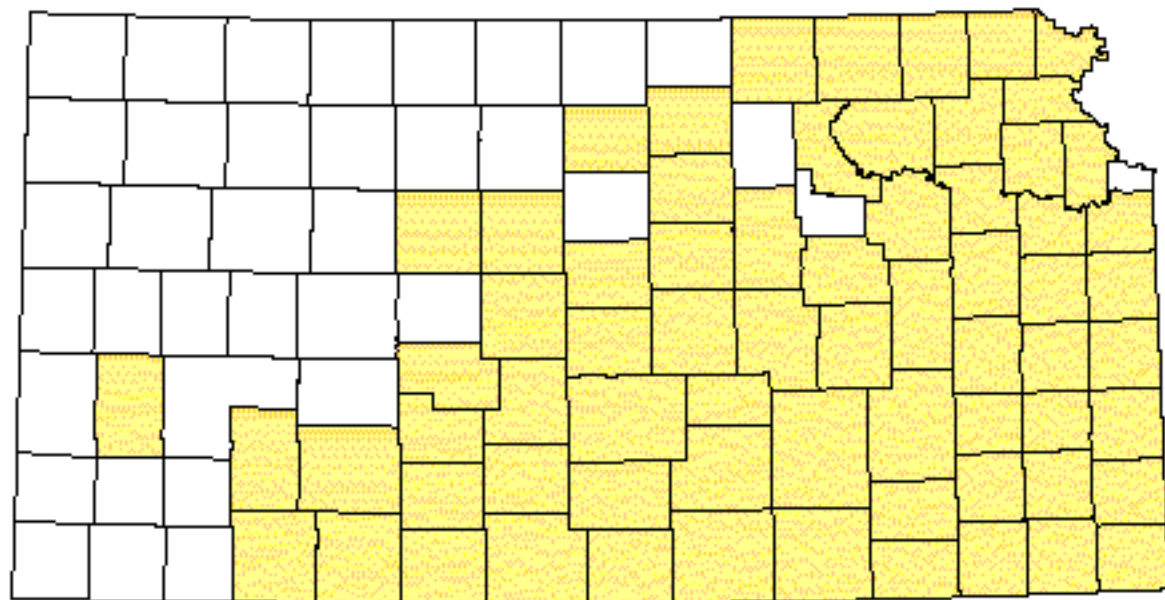
[#Reviewer]


Distler: observed twice (within a riparian area).

## Reference List

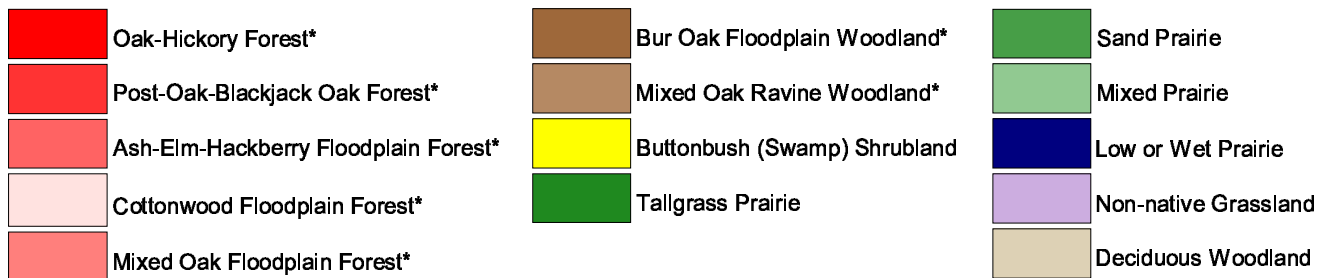
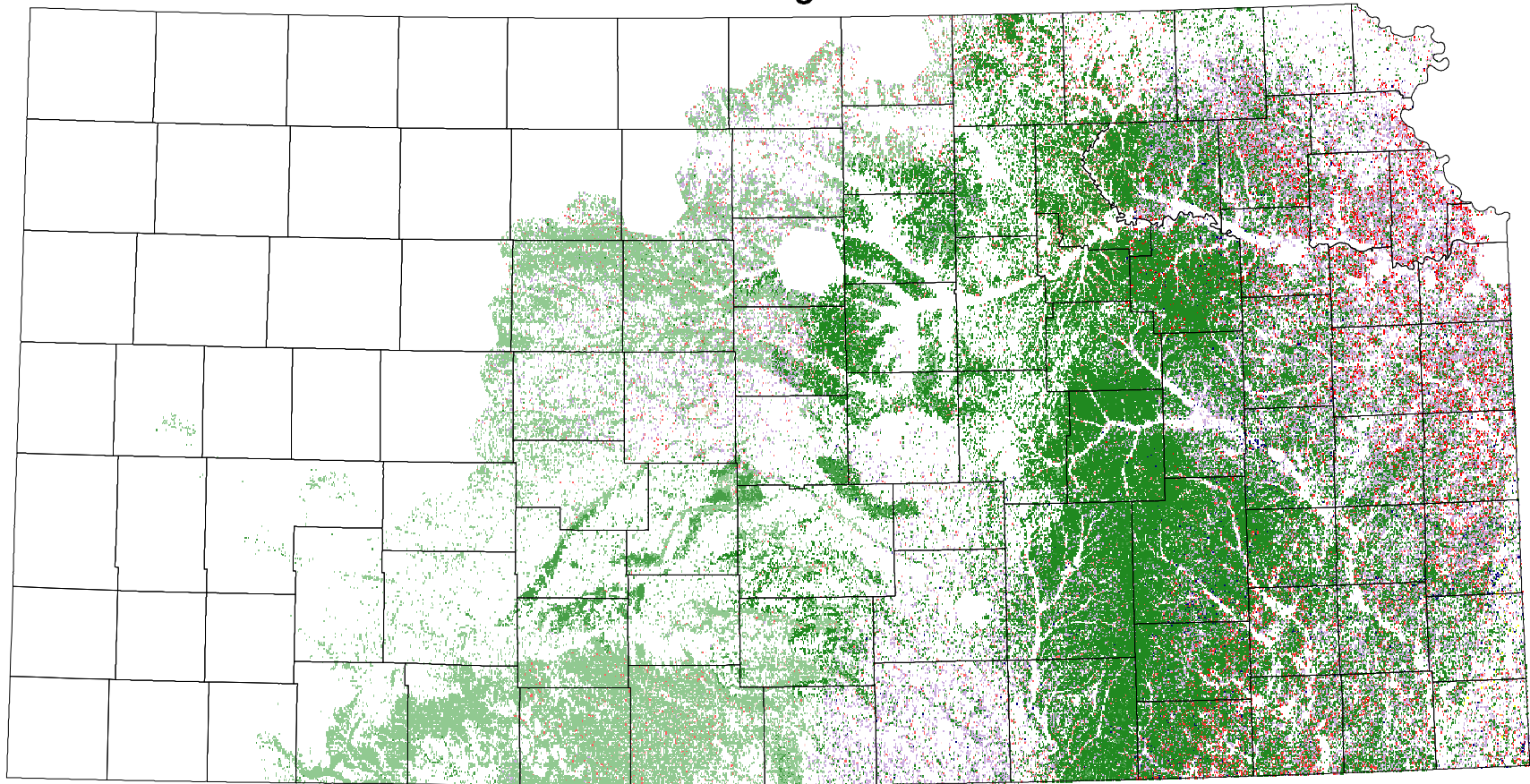
1. Boyd, R. L. 1988. Baker University Natural Areas. Transactions of the Kansas Academy of Science 91(1-2):52-54.
2. Brumwell, M. J. 1951. An ecological survey of Fort Leavenworth Military Reservation. American Midland Naturalist 45(1):187-231.
3. Burt, C. E. 1927. An annotated list of the amphibians and reptiles of Riley County, Kansas. Occasional Papers of the Museum of Zoology, University of Michigan 189:1-9.
4. Burt, C. E. and W. L. Hoyle. 1935. Additional records of the reptiles of the central prairie region of the United States. Transactions of the Kansas Academy of Science 37:193-216.
5. Busby, W. H. and J. R. Parmelee. 1996. Historical changes in a herpetofaunal assemblage in the Flint Hills of Kansas. American Midland Naturalist 135(1):81-91.
6. Cink, C. L. 1994. Seasonal activity of snakes on Kansas floodplain tallgrass prairie. Proceedings of the 14th annual North American Prairie Conference :83-86.
7. Clarke, R. F. 1956. Distributional notes on some amphibians and reptiles of Kansas. Transactions of the Kansas Academy of Science 59(2):213-219.
8. \_\_\_\_\_. 1958. An ecological study of the reptiles and amphibians in Osage County, Kansas. Emporia State Research Studies, Kansas State Teachers College 7(1):1-52.
9. Fitch, H. S. 1958. Home ranges, territories, and seasonal movements of vertebrates of the Natural History Museum. University of Kansas Publications, Museum of Natural History 11(3):63-326.
10. \_\_\_\_\_. 1979. A field study of the prairie kingsnake (*Lampropeltis calligaster*). Transactions of the Kansas Academy of Science 81(4):353-363.
11. Fitch, H. S. and H. W. Shirer. 1971. A radiotelemetric study of spatial relationships of some common snakes. Copeia 1:118-128.
12. Gloyd, H. K. 1928. The amphibians and reptiles of Franklin County, Kansas. Transactions of the Kansas Academy of Science 31:115-141.
13. Hall, H. H. and H. M. Smith. 1947. Selected records of reptiles and amphibians from southeast Kansas. Transactions of the Kansas Academy of Science 49(4):447-454.
14. Heinrich, M. and D. W. Kaufman. 1985. Herpetofauna of the Konza Prairie Research Natural Area, Kansas. Prairie Naturalist 17(2):101-112.
15. Platt, D. R. 1985. Population trends and habitat assessment of snakes and lizards in south central Kansas. Contract # 80 Final report. Kansas Fish and Game Commission, Pratt, Kansas, USA.
16. \_\_\_\_\_. 1998. Monitoring population trends of snakes and lizards in Harvey County, Kansas. Kansas Department of Wildlife and Parks, Pratt, Kansas, USA.
17. Rush, M. S. and E. D. Fleharty. 1981. New county records of amphibians and reptiles in Kansas. Transactions of the Kansas Academy of Science 84(4):204-208.
18. Tihen, J. A. and J. M. Sprague. 1939. Amphibians, reptiles, and mammals of the Meade County State Park. Transactions of the Kansas Academy of Science 42:499-512.
19. Webb, R. G. 1970. Reptiles of Oklahoma. University of Oklahoma Press, Norman, Oklahoma, USA.

# Prairie Kingsnake



 Range from Collins, 1993

# Prairie Kingsnake



\* 30 m edge adjacent to mapped grasslands