

Habitat Model for Species: Common Garter Snake

Thamnophis sirtalis

[Distribution Map](#)
[Habitat Map](#)

Landcover Category

0 - Comments

Collins, 1993

Boyd, 1988
Webb, 1970
Fitch and Shirer, 1971
Rush and Fleharty, 1981
Burt and Hoyle, 1935
Clarke, 1956
Tihen and Sprague, 1939

Gloyd, 1928
Gehlbach and Collette, 1959
Hall and Smith, 1947
Brumwell, 1951
Fitch, 1958
Fitch and Maslin, 1961
Charland and Gregory, 1995
[#KS GAP] Sandsage shrubland (12) within 300 m of water (82); 30 m edge of water (82).

[#Reviewer]

[#Reviewer2]

Habitat Restrictions

Comments

wide variety of habitats, including marshes and wet meadows, margins of pond, woodland and woodland edge, floodplains and cultivated fields.

No useful habitat information
no useful habitat information

distribution only
Distribution only
No useful information due to low abundance at location of study.

Distribution only
Distribution only
No useful habitat information
Same information as in paper # 570
Distribution of *Thamnophis sirtalis* in the Great Plains.
Study conducted in Canada - not used in model

Platt: This species can be found most anywhere.
Distler: common on Sedwick Field Station in all habitats.
Fitch: *T.s.parietalis* common Reservation. Occur in luxuriantly growing non-native abandoned pastures with pioneer woody vegetation and small unmowed areas of elm, dogwood, and hackberry saplings. Migrate to wooded hilltop limestone outcrops to hibernate.

02 - Oak-Hickory Forest

Clarke, 1956
Gloyd, 1928
Fitch, 1965

03 - Post Oak-Blackjack Oak Forest

Fitch, 1965

04 - Pecan Floodplain Forest

Collins, 1993

05 - Ash-Elm-Hackberry Floodplain Forest

Collins, 1993
Gloyd, 1928
Fitch, 1965

06 - Cottonwood Floodplain Forest

Collins, 1993
Platt, 1998
Clarke, 1956
Clarke, 1958
Fitch, 1965

07 - Mixed Oak Floodplain Forest

Collins, 1993
Fitch, 1965

08 - Bur Oak Floodplain Woodland

Collins, 1993
Gloyd, 1928
Fitch, 1965

09 - Mixed Oak Ravine Woodland

Collins, 1993
Clarke, 1956
Fitch, 1965

10 - Post Oak-Blackjack Oak Woodland

Collins, 1993
Fitch, 1965

11 - Cottonwood Floodplain Woodland

Collins, 1993
Clarke, 1956
Clarke, 1958
Fitch, 1965
Busby and Parmelee, 1996

12 - Sandsage Shrubland

[#Reviewer] Map within 300 m of water.

Rundquist: add with restriction

14 - Willow Shrubland

Collins, 1993

17 - Tallgrass Prairie

Platt, 1998
Clarke, 1956
Fitch, 1965
Heinrich and Kaufman, 1985

Occurred in open grasslands.

18 - Sand Prairie

Platt, 1998
Platt, 1985

30 - Low or Wet Prairie

Collins, 1993
Cink, 1994
Fitch, 1965
Heinrich and Kaufman, 1985
Heinrich and Kaufman, 1985

Occurred in open grasslands.
Occurred in marshy areas near spring-fed grassland streams.

31 - Freshwater Marsh

Collins, 1993
Fitch, 1965

32 - Bulrush Marsh

Collins, 1993

33 - Cattail Marsh

Collins, 1993
Fitch, 1965

39 - Pondweed Aquatic Wetland - not mapped

Collins, 1993 Map 30 m edge.

margins of ponds

40 - Non-native Grassland

Busby and Parmelee, 1996
[#Reviewer]

Fitch: abandoned pastures.

41 - CRP

Fitch, 1965

44 - Cultivated Land

Collins, 1993
Clarke, 1956
Heinrich and Kaufman, 1985

Occurred in cultivated fields.

51 - Maple Floodplain Forest

Collins, 1993

55 - Deciduous Woodland

Collins, 1993

70 - Weedy Marsh

Collins, 1993

81 - Urban Areas

[#Reviewer]

Platt: Common snake reported to me in residential areas and parks.

82 - Water (Lake)

Collins, 1993

Map 30 m edge.

82 - Water (River)

[#Reviewer]

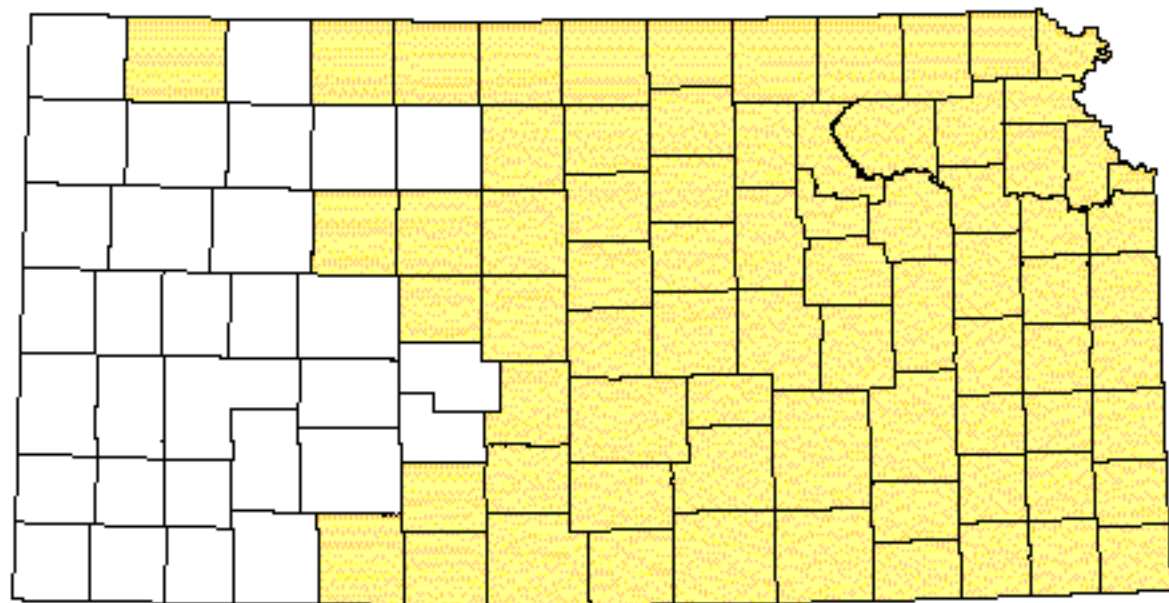
Map 30 m edge.


Platt: Found along the edge of Sand Creek (for instance) and will enter the water.

Reference List

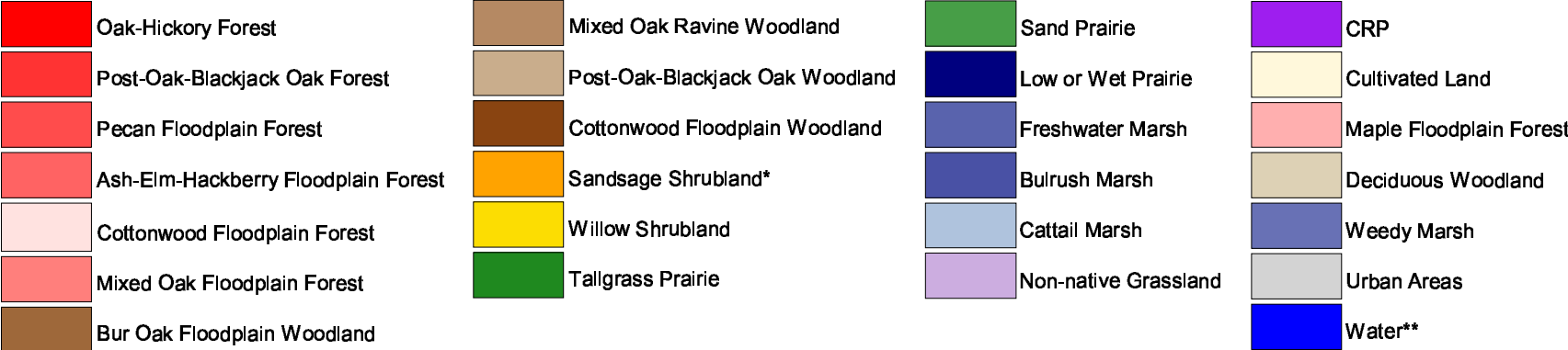
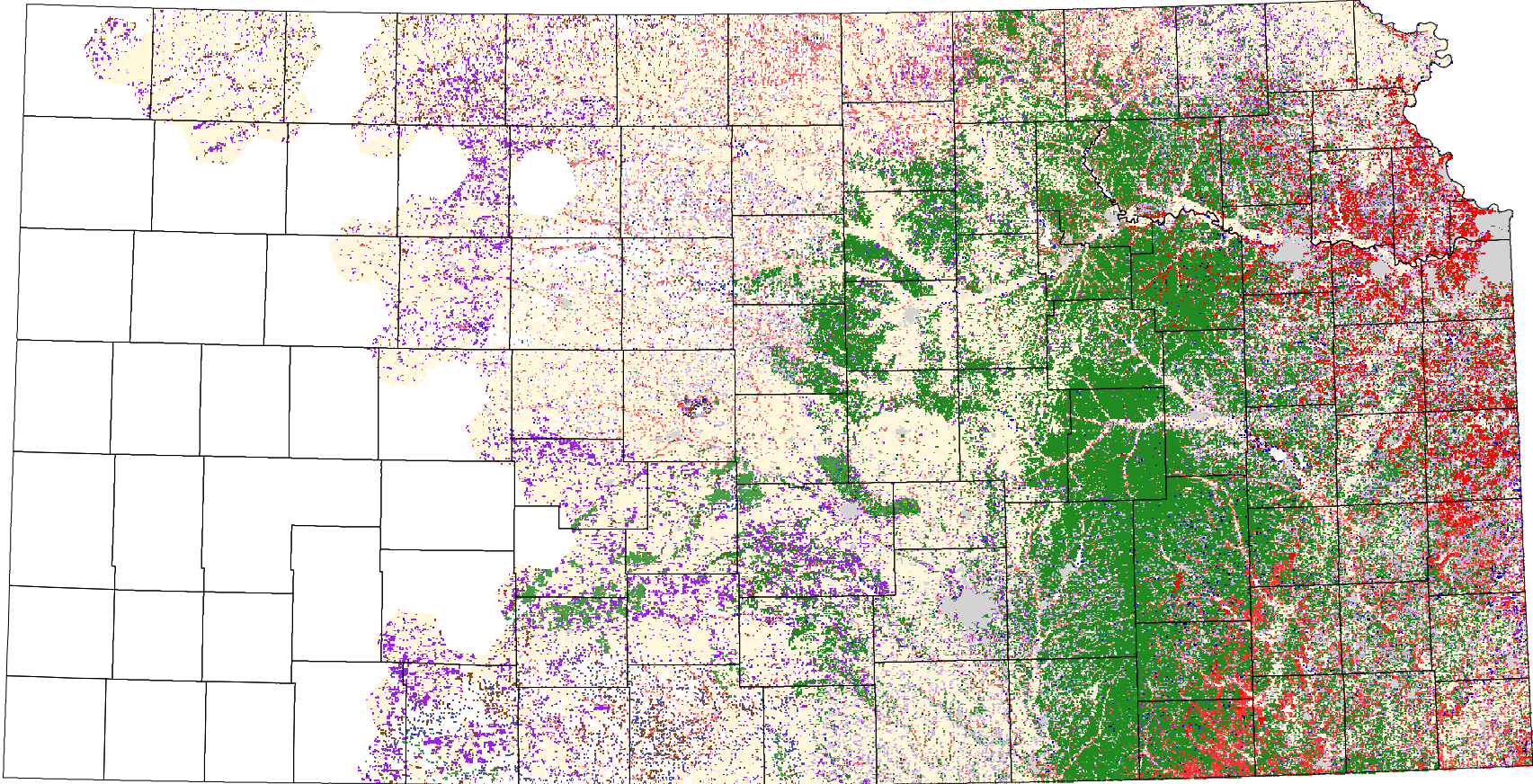
1. Boyd, R. L. 1988. Baker University Natural Areas. Transactions of the Kansas Academy of Science 91(1-2):52-54.
2. Brumwell, M. J. 1951. An ecological survey of Fort Leavenworth Military Reservation. American Midland Naturalist 45(1):187-231.
3. Burt, C. E. and W. L. Hoyle. 1935. Additional records of the reptiles of the central prairie region of the United States. Transactions of the Kansas Academy of Science 37:193-216.
4. Busby, W. H. and J. R. Parmelee. 1996. Historical changes in a herpetofaunal assemblage in the Flint Hills of Kansas. American Midland Naturalist 135(1):81-91.
5. Charland, M. B. and P. T. Gregory. 1995. Movements and habitat use in gravid and nongravid female garter snakes (Colubridae: *Thamnophis*). Journal of Zoology 236:543-561.
6. Cink, C. L. 1994. Seasonal activity of snakes on Kansas floodplain tallgrass prairie. Proceedings of the 14th annual North American Prairie Conference :83-86.
7. Clarke, R. F. 1956. Distributional notes on some amphibians and reptiles of Kansas. Transactions of the Kansas Academy of Science 59(2):213-219.
8. _____. 1958. An ecological study of the reptiles and amphibians in Osage County, Kansas. Emporia State Research Studies, Kansas State Teachers College 7(1):1-52.
9. Collins, J. T. 1993. Amphibians and reptiles in Kansas. University Press of Kansas, Lawrence, Kansas, USA.
10. Fitch, H. S. 1958. Home ranges, territories, and seasonal movements of vertebrates of the Natural History Museum. University of Kansas Publications, Museum of Natural History 11(3):63-326.
11. _____. 1965. An ecological study of the garter snake, *Thamnophis sirtalis*. University of Kansas Publications Museum of Natural History 15(10):493-564.
12. Fitch, H. S. and T. P. Maslin. 1961. Occurrence of the garter snake, *Thamnophis sirtalis*, in the Great Plains and Rocky Mountains. University of Kansas Publications, Museum of Natural History 13(5):289-308.
13. Fitch, H. S. and H. W. Shirer. 1971. A radiotelemetric study of spatial relationships of some common snakes. Copeia 1:118-128.
14. Gehlbach, F. R. and B. B. Collette. 1959. Distributional and biological notes on the Nebraska herpetofauna. Herpetologica 15:141-143.
15. Gloyd, H. K. 1928. The amphibians and reptiles of Franklin County, Kansas. Transactions of the Kansas Academy of Science 31:115-141.
16. Hall, H. H. and H. M. Smith. 1947. Selected records of reptiles and amphibians from southeast Kansas. Transactions of the Kansas Academy of Science 49(4):447-454.
17. Heinrich, M. and D. W. Kaufman. 1985. Herpetofauna of the Konza Prairie Research Natural Area, Kansas. Prairie Naturalist 17(2):101-112.
18. Platt, D. R. 1985. Population trends and habitat assessment of snakes and lizards in south central Kansas. Contract # 80 Final report. Kansas Fish and Game Commission, Pratt, Kansas, USA.
19. _____. 1998. Monitoring population trends of snakes and lizards in Harvey County, Kansas. Kansas Department of Wildlife and Parks, Pratt, Kansas, USA.
20. Rush, M. S. and E. D. Fleharty. 1981. New county records of amphibians and reptiles in Kansas. Transactions of the Kansas Academy of Science 84(4):204-208.
21. Tihen, J. A. and J. M. Sprague. 1939. Amphibians, reptiles, and mammals of the Meade County State Park. Transactions of the Kansas Academy of Science 42:499-512.
22. Webb, R. G. 1970. Reptiles of Oklahoma. University of Oklahoma Press, Norman, Oklahoma, USA.

Common Garter Snake



 Range from Collins, 1993

Common Garter Snake



* within 300 m of water
 ** 30 m edge