

Habitat Model for Species: Central Plains Milk Snake

Lampropeltis triangulum gentilis

[Distribution Map](#)
[Habitat Map](#)

Landcover Category

0 - Comments

Collins, 1993

Webb, 1970

Taggart, 1992

Rush et al., 1982

Burt and Hoyle, 1935

Clarke, 1956

Gloyd, 1928

Hall and Smith, 1947

Gloyd, 1932

Brumwell, 1951

Burt, 1927

Fitch, 1958

Fitch and Fleet, 1970

[#KS GAP]

30 m edge of water.

02 - Oak-Hickory Forest

Clarke, 1958

07 - Mixed Oak Floodplain Forest

Heinrich and Kaufman, 1985

08 - Bur Oak Floodplain Woodland

Collins, 1993

Heinrich and Kaufman, 1985

09 - Mixed Oak Ravine Woodland

Collins, 1993

Clarke, 1958

Heinrich and Kaufman, 1985

Busby and Parmelee, 1996

10 - Post Oak-Blackjack Oak Woodland

Collins, 1993

11 - Cottonwood Floodplain Woodland

Collins, 1993

Busby and Parmelee, 1996

17 - Tallgrass Prairie

Heinrich and Kaufman, 1985

Busby and Parmelee, 1996

43 - Rock Outcrop/Bluff/Cliff - not mapped

Collins, 1993

Habitat Restrictions

Comments

"open woods and woodland edge" in eastern KS
"prairie canyons and the edges of streams" in western Kansas

No clear faunal affinities given.

distribution only

Paper states that this species was found in uncultivated islands of native grasses (p170-171).

This king snake...often occurs in the vicinity of limestone ledges of the treeless prairie in central Kansas.

Distribution information included (p 210).

Distribution only

Only six specimens (of this species) were secured. All were collected under stones in open woods (p 128).

distribution only

A small king snake of this form was taken from moist earth beneath a stone in open woods (p 405).

No usable habitat information

Distribution only

Habitat: grassy, rock-strewn areas, usually in open woodland or woodland edge (124).

...optimal conditions were provided by open woodland or woodland edge, with grass or other vegetation kept short by grazing, and an abundant supply of flat rocks or similar shelter (p389). (Fitch rev.: esp. where its favorite prey, 5-lined skink is present.)

Most observations were in forest edge or shrubby habitat.

"open woods and woodland edge" in eastern KS
Most observations were in forest edge or shrubby habitat.

"open woods and woodland edge" in eastern KS

Most observations were in forest edge or shrubby habitat.

"open woods and woodland edge" in eastern KS

"open woods and woodland edge" in eastern KS

One observation was from open grassland.

"prairie canyons and the edges of streams" in western Kansas

55 - Deciduous Woodland

Collins, 1993

"open woods and woodland edge" in eastern KS

82 - Water (River)

Collins, 1993

"prairie canyons and the edges of streams" in western Kansas

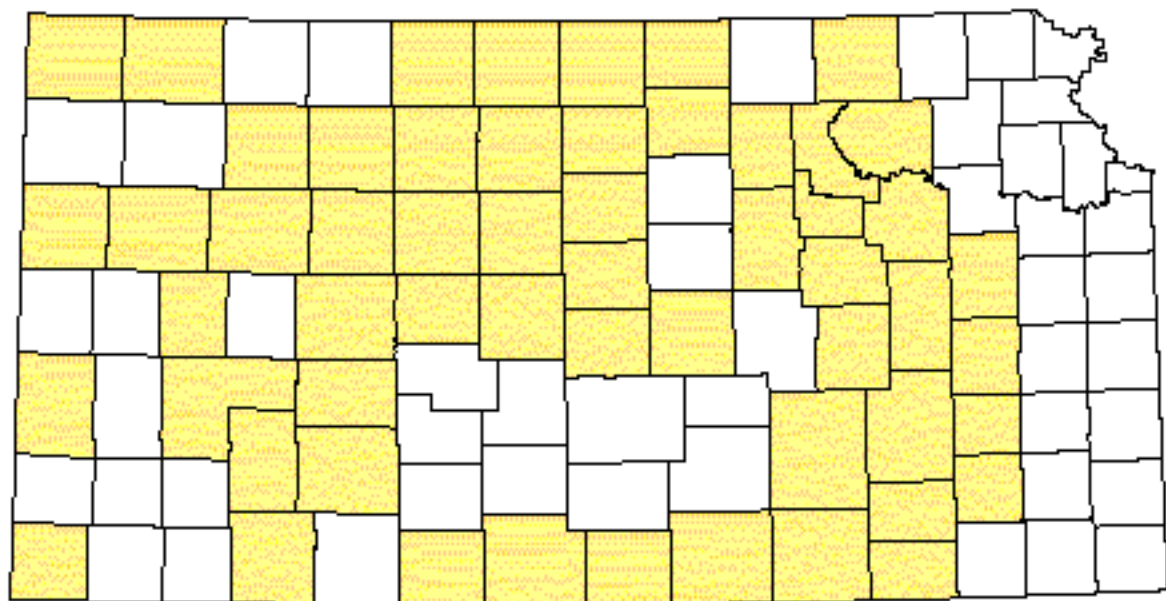
[#KS GAP]


Map 30 m edge.

Reference List

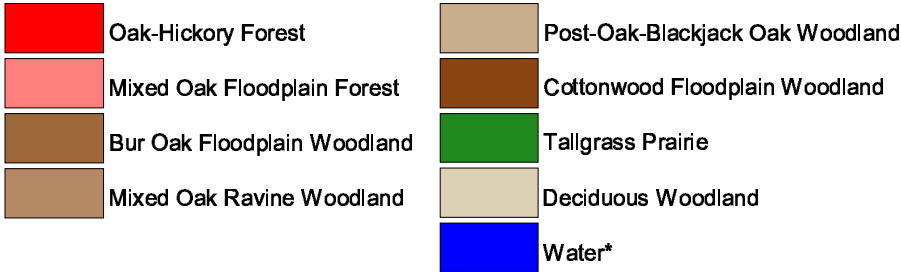
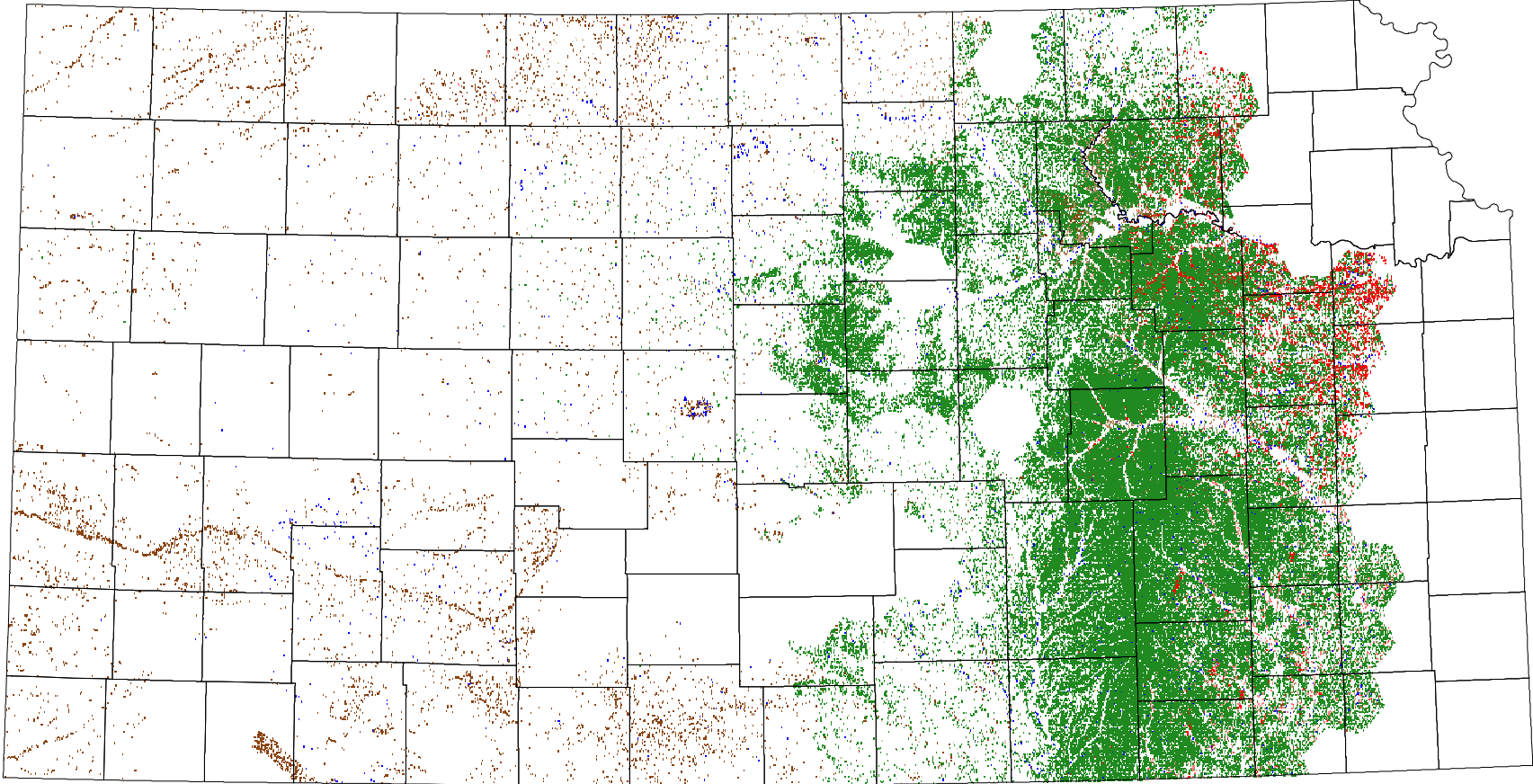
1. Brumwell, M. J. 1951. An ecological survey of Fort Leavenworth Military Reservation. *American Midland Naturalist* 45(1):187-231.
2. Burt, C. E. 1927. An annotated list of the amphibians and reptiles of Riley County, Kansas. *Occasional Papers of the Museum of Zoology, University of Michigan* 189:1-9.
3. Burt, C. E. and W. L. Hoyle. 1935. Additional records of the reptiles of the central prairie region of the United States. *Transactions of the Kansas Academy of Science* 37:193-216.
4. Busby, W. H. and J. R. Parmelee. 1996. Historical changes in a herpetofaunal assemblage in the Flint Hills of Kansas. *American Midland Naturalist* 135(1):81-91.
5. Clarke, R. F. 1956. Distributional notes on some amphibians and reptiles of Kansas. *Transactions of the Kansas Academy of Science* 59(2):213-219.
6. _____. 1958. An ecological study of the reptiles and amphibians in Osage County, Kansas. *Emporia State Research Studies, Kansas State Teachers College* 7(1):1-52.
7. Collins, J. T. 1993. *Amphibians and reptiles in Kansas*. University Press of Kansas, Lawrence, Kansas, USA.
8. Fitch, H. S. 1958. Home ranges, territories, and seasonal movements of vertebrates of the Natural History Museum. *University of Kansas Publications, Museum of Natural History* 11(3):63-326.
9. Fitch, H. S. and R. R. Fleet. 1970. Natural history of the milk snake (*Lampropeltis triangulum*) in northeastern Kansas. *Herpetologica* 26(4):387-396.
10. Gloyd, H. K. 1928. The amphibians and reptiles of Franklin County, Kansas. *Transactions of the Kansas Academy of Science* 31:115-141.
11. _____. 1932. The herpetological fauna of the Pigeon Lake Region, Miami County, Kansas. *Papers of the Michigan Academy of Science Arts and Letters* 15:389-408.
12. Hall, H. H. and H. M. Smith. 1947. Selected records of reptiles and amphibians from southeast Kansas. *Transactions of the Kansas Academy of Science* 49(4):447-454.
13. Heinrich, M. and D. W. Kaufman. 1985. Herpetofauna of the Konza Prairie Research Natural Area, Kansas. *Prairie Naturalist* 17(2):101-112.
14. Rush, M. S., S. M. Royal, and E. D. Fleharty. 1982. New county records and habitat preferences of amphibians and reptiles from the sandstone prairie in Finney County, Kansas. *Transactions of the Kansas Academy of Science* 85(3):165-173.
15. Taggart, T. W. 1992. Observations on Kansas Amphibians and Reptiles. *Kansas Herpetological Society Newsletter* 88:13-15.
16. Webb, R. G. 1970. *Reptiles of Oklahoma*. University of Oklahoma Press, Norman, Oklahoma, USA.

Central Plains Milk Snake



 Range from Collins, 1993

Central Plains Milk Snake



* 30 m edge