

# Habitat Model for Species: **Brown Snake**

*Storeria dekayi*

[Distribution Map](#)  
[Habitat Map](#)

## Landcover Category

### **0 - Comments**

Fleaharty and Ittner, 1967  
Burt and Hoyle, 1935  
Clarke, 1956  
Hall and Smith, 1947  
Gloyd, 1932  
Burt, 1927  
Fitch, 1958  
[#KS GAP]

### Habitat Restrictions

30 m edge of selected grasslands (17,22,40) adjacent to selected forests and woodlands (2,5,6,8,9,11,55).

[#Reviewer]

### Comments

Distribution only  
Distribution only  
Distribution only  
Distribution only  
No useful habitat information  
Distribution only  
No useful habitat information

Fitch: associated with forest edge and abandoned grass-weed cover.

### **02 - Oak-Hickory Forest**

Clarke, 1958  
Gloyd, 1928  
Brumwell, 1951

### **05 - Ash-Elm-Hackberry Floodplain Forest**

Gloyd, 1928  
Busby and Parmelee, 1996

### **06 - Cottonwood Floodplain Forest**

Clarke, 1958  
[#Reviewer]

Distler: observed 1 to 2 times per year on Sedgwick Field Station

### **08 - Bur Oak Floodplain Woodland**

Gloyd, 1928

### **09 - Mixed Oak Ravine Woodland**

Clarke, 1958  
Busby and Parmelee, 1996

### **11 - Cottonwood Floodplain Woodland**

Clarke, 1958

### **12 - Sandsage Shrubland**

[#Reviewer]

Rundquist: add

### **17 - Tallgrass Prairie**

Clarke, 1958  
[#KS GAP] Map 30 m edge adjacent to selected woodlands and forests (2, 5, 6, 8, 9, 11, 55).

[#Reviewer] mainly edges.

Distler: observed 1 to 2 times per year on Sedgwick Field Station

### **22 - Mixed Prairie**

[#KS GAP] Map 30 m edge adjacent to selected woodlands and forests (2, 5, 6, 8, 9, 11, 55).

[#Reviewer]

Rundquist: add

### **40 - Non-native Grassland**

[#KS GAP] Map 30 m edge adjacent to selected woodlands and forests (2, 5, 6, 8, 9, 11, 55).

[#Reviewer]

Fitch comment

### **55 - Deciduous Woodland**

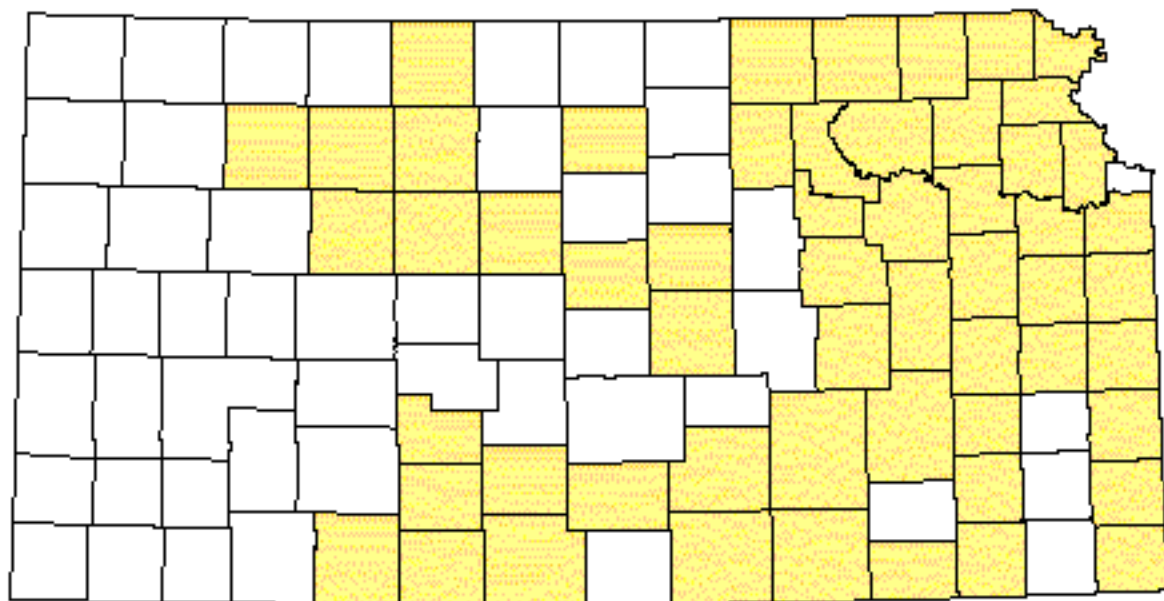
[#Reviewer]

Busby: add

Reference List

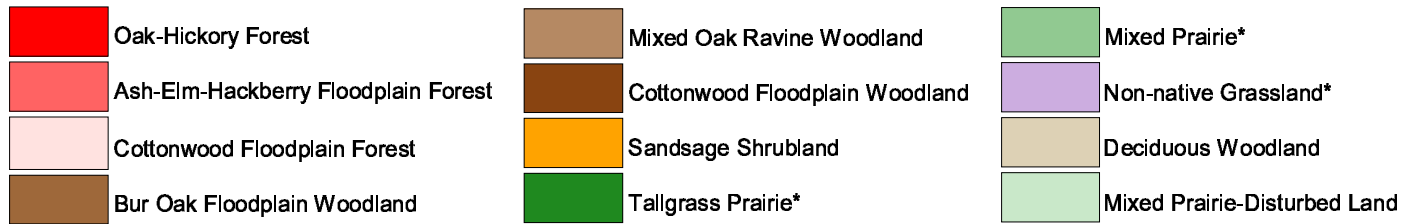
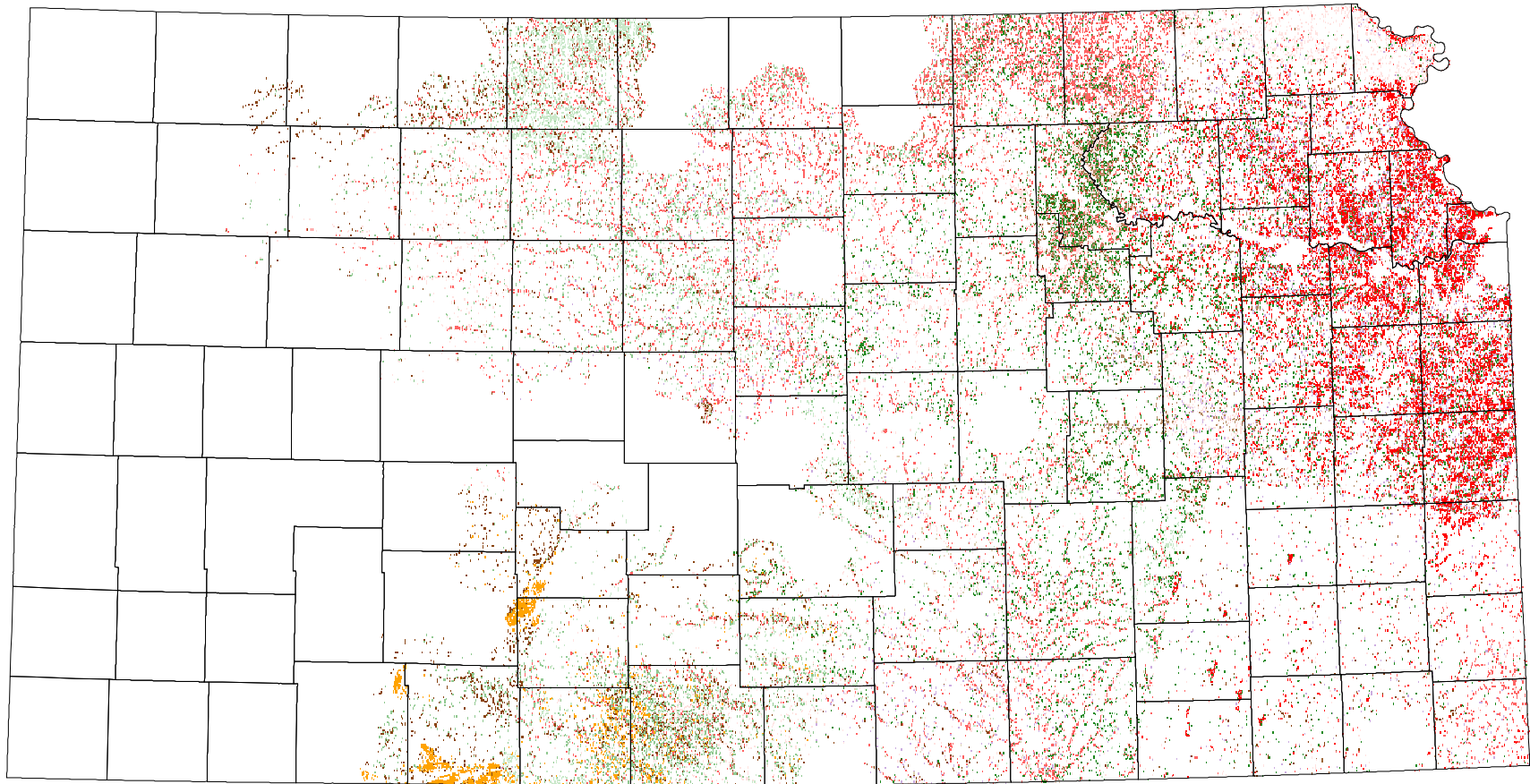
1. Brumwell, M. J. 1951. An ecological survey of Fort Leavenworth Military Reservation. *American Midland Naturalist* 45(1):187-231.
2. Burt, C. E. 1927. An annotated list of the amphibians and reptiles of Riley County, Kansas. *Occasional Papers of the Museum of Zoology, University of Michigan* 189:1-9.
3. Burt, C. E. and W. L. Hoyle. 1935. Additional records of the reptiles of the central prairie region of the United States. *Transactions of the Kansas Academy of Science* 37:193-216.
4. Busby, W. H. and J. R. Parmelee. 1996. Historical changes in a herpetofaunal assemblage in the Flint Hills of Kansas. *American Midland Naturalist* 135(1):81-91.
5. Clarke, R. F. 1956. Distributional notes on some amphibians and reptiles of Kansas. *Transactions of the Kansas Academy of Science* 59(2):213-219.
6. \_\_\_\_\_. 1958. An ecological study of the reptiles and amphibians in Osage County, Kansas. *Emporia State Research Studies, Kansas State Teachers College* 7(1):1-52.
7. Fitch, H. S. 1958. Home ranges, territories, and seasonal movements of vertebrates of the Natural History Museum. *University of Kansas Publications, Museum of Natural History* 11(3):63-326.
8. Fleharty, E. D. and D. R. Ittner. 1967. Additional locality records for some Kansas Herptiles. *Southwestern Naturalist* 12(2):199-200.
9. Gloyd, H. K. 1928. The amphibians and reptiles of Franklin County, Kansas. *Transactions of the Kansas Academy of Science* 31:115-141.
10. \_\_\_\_\_. 1932. The herpetological fauna of the Pigeon Lake Region, Miami County, Kansas. *Papers of the Michigan Academy of Science Arts and Letters* 15:389-408.
11. Hall, H. H. and H. M. Smith. 1947. Selected records of reptiles and amphibians from southeast Kansas. *Transactions of the Kansas Academy of Science* 49(4):447-454.

# Brown Snake



 Range from Collins, 1993

# Brown Snake



\* 30 m edge adjacent to mapped forests and woodlands