

# Habitat Model for Species: **Plains Pocket Gopher**

*Geomys bursarius*

[Distribution Map](#) [Habitat Map](#)

## Landcover Category

### **0 - Comments**

Behrend and Tester, 1988

[#Reviewer]

### **Habitat Restrictions**

### **Comments**

found in savanna-type habitat; stomach and fecal samples showed grasses to be most prominent items in diet

Kaufman : Delete landcover 08. Add Lincoln and Ottawa Co.

Finck : Add Chase and Lyon Co.

### **12 - Sandsage Shrubland**

Steuter et al., 1995

Foster and Stubbendieck, 1980

new gopher mounds occurred in ungrazed choppy sand (4.8%) and bison-grazed choppy sand; pocket gophers concentrate their activities in forb patches during the summer months

Stipa comata, Agropyron smithii, Bouteloua gracilis, Opuntia humifusa most-commonly eaten plants; diet 31% stems and leaves and 69% roots; summer diets mostly forbs, fall and winter diets mostly grasses

### **17 - Tallgrass Prairie**

Davis et al., 1997

Finck et al., 1986

Sietman et al., 1994

Pitts et al., 1987

Benedix, 1993

Klaas et al., 1998

Klein, 1997

Wolfe-Bellin and Moloney, 2000

gopher mounds found in shallow upland soils typically in areas disturbed by past livestock grazing

pocket gophers common in open areas with loam or sandy soils; some mounds observed along edges of woods

number of mounds directly related to amount of silverleaf scurf pea; scurf pea also an important storage item; grasses likely make up large proportion of diet; gophers likely eat or store almost every underground plant part they encounter while digging

some introduced grasses also present (Bromus inermis, Poa pratensis)

### **18 - Sand Prairie**

Steuter et al., 1995

new gopher mounds occurred in ungrazed choppy sand (4.8%) and bison-grazed choppy sand; pocket gophers concentrate their activities in forb patches during the summer months

Foster and Stubbendieck, 1980

*Stipa comata*, *Agropyron smithii*, *Bouteloua gracilis*, *Opuntia humifusa* most-commonly eaten plants; diet 31% stems and leaves and 69% roots; summer diets mostly forbs, fall and winter diets mostly grasses

### **20 - Western Wheatgrass Prairie**

Deisch et al., 1990

Kjar Hirsch and Stubbendieck, 1984

### **22 - Mixed Prairie**

Foster and Stubbendieck, 1980

*Stipa comata*, *Agropyron smithii*, *Bouteloua gracilis*, *Opuntia humifusa* most-commonly eaten plants; diet 31% stems and leaves and 69% roots; summer diets mostly forbs, fall and winter diets mostly grasses

Kjar Hirsch and Stubbendieck, 1984

### **25 - Shortgrass Prairie**

Birney et al., 1970

Choate and Fleharty, 1975

Walker, 1978

Foster and Stubbendieck, 1980

most items likely obtained beneath the soil surface and include tubers and roots

*Stipa comata*, *Agropyron smithii*, *Bouteloua gracilis*, *Opuntia humifusa* most-commonly eaten plants; diet 31% stems and leaves and 69% roots; summer diets mostly forbs, fall and winter diets mostly grasses

### **30 - Low or Wet Prairie**

Hill and Hibbard, 1943

#### **40 - Non-native Grassland**

Downhower and Hall, 1966

soil composition 2nd only to presence of plant food in distribution of gopher; occur only in soils with low clay content (<30%) and a high content of sand (>40%)

Linsdale, 1928

Behrend and Tester, 1988

stomach and fecal samples showed grasses to be most prominent items in diet; brome (*Bromus*), wheatgrass (*Agropyron*), bluegrass (*Poa*) most important grasses in diet

Pitts and Choate, 1997

Reichman and Smith, 1985

Wolfe-Bellin and Moloney, 2000

#### **44 - Cultivated Land**

Choate and Fleharty, 1975

most items likely obtained beneath the soil surface and include tubers and roots of alfalfa and sudan grass; dandelions occasionally found in cheek pouches

Downhower and Hall, 1966

agricultural land was alfalfa, sorghum fields and orchards; soil composition 2nd only to presence of plant food in distribution of gopher; occur only in soils with low clay content (<30%) and a high content of sand (>40%)

Fleharty and Navo, 1983

gopher mounds were found farther into the irrigated cornfields as the growing season progressed

Walker, 1978

Behrend and Tester, 1988

cropland was irrigated alfalfa

stomach and fecal samples showed grasses to be most prominent items in diet; oats (*Avena*) most abundant agricultural item in diet

Pitts and Choate, 1997

Luce et al., 1981

Wrigley et al., 1991

cropland was alfalfa

fields of alfalfa and hay were much preferred over cereal crops and fallow; gophers taken in soil that was sand, rich loam, or (to limited extent) glacial till

#### **60 - Mixed Prairie-Disturbed Land**

Birney et al., 1970

gophers captured in a roadside ditch of mixed sand and loam

Choate and Fleharty, 1975

most items likely obtained beneath the soil surface and include tubers and roots

Fleharty and Navo, 1983

gopher mounds abundant in diamond waste areas between irrigated corn fields

Wrigley et al., 1991

gophers taken in soil that was sand, rich loam, or (to limited extent) glacial till; captured at edges of farm fields, banks of roads, railroads, drainage ditches

#### **71 - Weedy Upland**

Smith, 1948

nest constructed of cut stems, primarily *Tridens flavus*, *Setaria lutescens*, *Bromus inermis*; foodstores consisted entirely of tubers of *Helianthus tuberosa*; burrow was in flat areas where soil was black loam

## 81 - Urban Areas

McCarley, 1966

Pitts and Choate, 1997

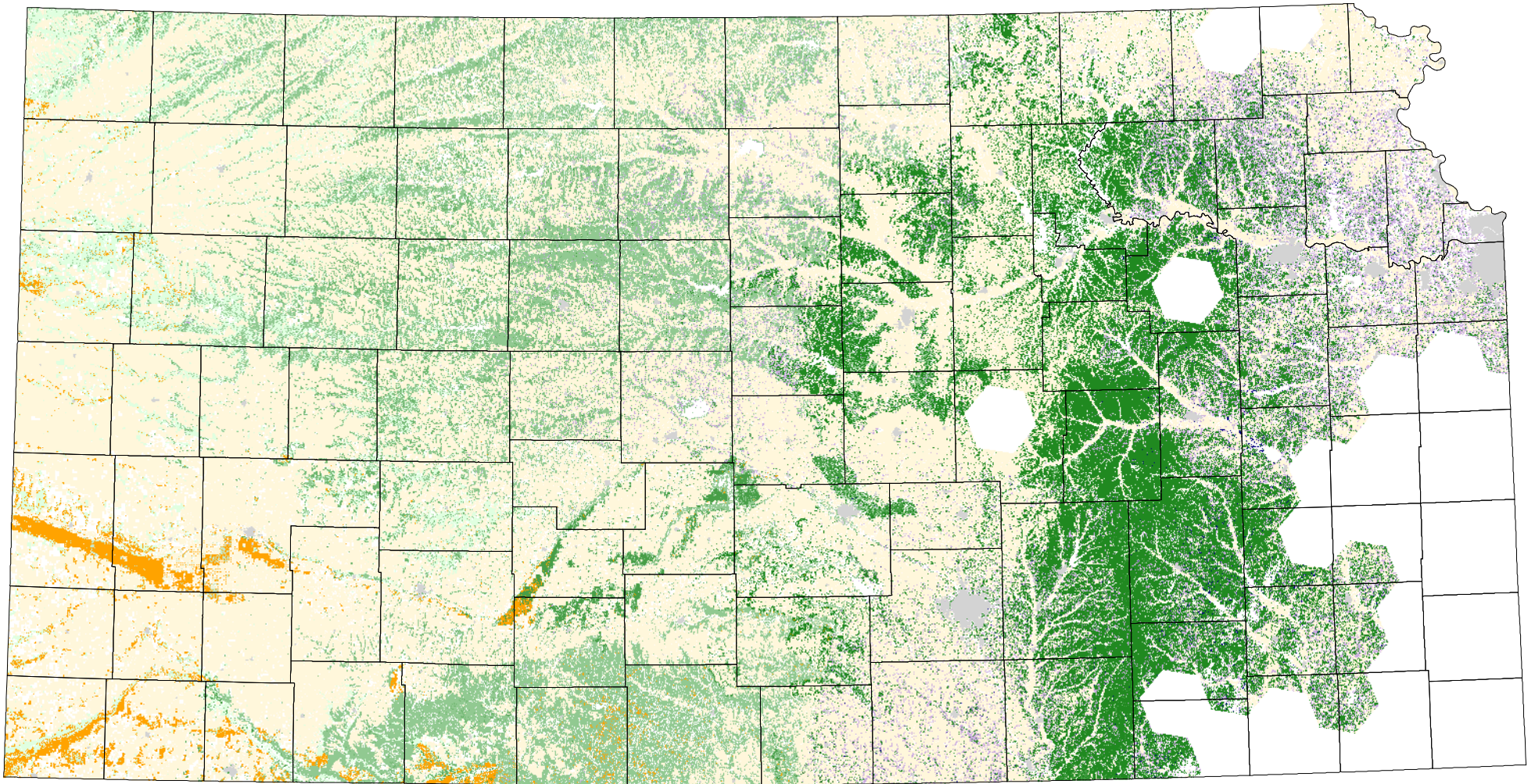
study site a golf course

### Reference List

1. Behrend, A. F. and J. R. Tester. 1988. Feeding ecology of the plains pocket gopher in east central Minnesota. *The Prairie Naturalist* 20:99-107.
2. Benedix, J. H., Jr. 1993. Area-restricted search by the plains pocket gopher (*Geomys bursarius*) in tallgrass prairie habitat. *Behavioral Ecology* 4:318-324.
3. Birney, E. C., J. K. Jones, Jr. , and D. M. Mortimer. 1970. The yellow-faced pocket gopher, *Pappogeomys castanops*, in Kansas. *Transactions of the Kansas Academy of Science* 73.:368-375.
4. Choate, J. R. and E. D. Fleharty. 1975. Synopsis of native, recent mammals of Ellis County, Kansas. *Occasional Papers, The Museum, Texas Tech University* 37:1-80.
5. Davis, M. A., A. Duke, T. Ibsen, H. Tran, and R. Rhodes. 1997. Spatial distribution of *Penstemon grandiflorus* (Nutt.) and *Geomys bursarius* in a fragmented oak woodland in Minnesota, USA. *Natural Areas Journal* 17:136-143.
6. Deisch, M. S., D. W. Uresk, and R. L. Linder. 1990. Effects of prairie dog rodenticides on deer mice in western South Dakota. *Great Basin Naturalist* 50:347-353.
7. Downhower, J. F. and E. R. Hall. 1966. The pocket gopher in Kansas. University of Kansas Publications, Museum of Natural History 44:1-32.
8. Finck, E. J., D. W. Kaufman, G. A. Kaufman, S. K. Gurtz, B. K. Clark, L. J. McLellan, and B. S. Clark. 1986. Mammals of the Konza Prairie Research Natural Area, Kansas. *The Prairie Naturalist* 18:153-166.
9. Fleharty, E. D. and K. W. Navo. 1983. Irrigated cornfields as habitat for small mammals in the sandsage prairie region of western Kansas. *Journal of Mammalogy* 64:367-379.
10. Foster, M. A. and J. Stubbendieck. 1980. Effects of the plains pocket gopher (*Geomys bursarius*) on rangeland. *Journal of Range Management* 33:74-78.
11. Hill, J. E. and C. W. Hibbard. 1943. Ecological differentiation between two harvest mice (*Reithrodontomys*) in western Kansas. *Journal of Mammalogy* 24:22-25.
12. Kjar Hirsch, K. J. and J. Stubbendieck. 1984. Relationships between vegetation, soils, and pocket gophers in the Nebraska Sand Hills. *Transactions of the Nebraska Academy of Science* 12:5-11.
13. Klaas, B. A., B. J. Danielson, and K. A. Moloney. 1998. Influence of pocket gophers on meadow voles in a tallgrass prairie. *Journal of Mammalogy* 79:942-952.
14. Klein, G. D. 1997. Pocket gopher (*Geomys bursarius*) disturbance on a tallgrass prairie in central Nebraska. *Transactions of the Nebraska Academy of Science* 24:67-69.
15. Linsdale, J. 1928. Mammals of a small area along the Missouri River. *Journal of Mammalogy* 9:140-146.
16. Luce, D. G., R. M. Case, and J. L. Stubbendieck. 1981. Damage to alfalfa fields by plains pocket gophers. *The Journal of Wildlife Management* 45:258-260.
17. McCarley, H. 1966. Annual cycle, population dynamics and adaptive behavior of *Citellus tridecemlineatus*. *Journal of Mammalogy* 47:294-316.
18. Pitts, R. M. and J. R. Choate. 1997. Reproduction of the plains pocket gopher (*Geomys bursarius*) in Missouri. *The Southwestern Naturalist* 42:238-241.
19. Pitts, R. M., M. J. Levalley, and S. Klinger. 1987. Mammals of Fort Riley, Kansas. *Transactions of the Kansas Academy of Science* 90:75-80.
20. Reichman, O. J. and S. C. Smith. 1985. Impact of pocket gopher burrows on overlying vegetation. *Journal of Mammalogy* 66:720-725.
21. Sietman, B. E., W. B. Fothergill, and E. J. Finck. 1994. Effects of haying and old-field succession on small mammals in tallgrass prairie. *The American Midland Naturalist* 131:1-8.
22. Smith, C. F. 1948. A burrow of the pocket gopher (*Geomys bursarius*) in eastern Kansas. *Transactions of the Kansas Academy of Science* 51:313-315.
23. Steuter, A. A., E. M. Steinauer, G. L. Hill, P. A. Bowers, and L. L. Tieszen. 1995. Distribution and diet of bison and pocket gophers in a sandhills prairie. *Ecological Applications* 5:756-766.
24. Walker, J. R. 1978. The mammals (exclusive of the bats) of Cheyenne County, Kansas. *Transactions of the Kansas Academy of Science* 81:185-229.
25. Wolfe-Bellin, K. S. and K. A. Moloney. 2000. The effect of gopher mounds and fire on the spatial distribution and demography of a short-lived legume in tallgrass prairie. *Canadian Journal of Botany* 78:1299-1308.
26. Wrigley, R. E., J. E. Dubois, and H. W. R. Copland. 1991. Distribution and ecology of six rare species of prairie rodents in Manitoba. *The Canadian Field-Naturalist* 105:1-12.



# Plains Pocket Gopher



Sandsage Shrubland



Tallgrass Prairie



Sand Prairie



Western Wheatgrass Prairie



Mixed Prairie



Shortgrass Prairie



Low or Wet Prairie



Non-native Grassland



Cultivated Land



Mixed Prairie-Disturbed Land



Weedy Upland



Urban Areas