

# Habitat Model for Species: **Mink**

*Mustela vison*

[Distribution Map](#) [Habitat Map](#)

## Landcover Category

### **0 - Comments**

McMillan et al., 1997

### **Habitat Restrictions**

[#KS GAP] 60 m edge of water.

### **04 - Pecan Floodplain Forest**

Stains and Baker, 1958

### **05 - Ash-Elm-Hackberry Floodplain Forest**

Andersen and Fleharty, 1967

Choate, 1967

Pitts et al., 1987

Stains and Baker, 1958

### **06 - Cottonwood Floodplain Forest**

Stains and Baker, 1958

### **07 - Mixed Oak Floodplain Forest**

Choate, 1967

### **08 - Bur Oak Floodplain Woodland**

Stains and Baker, 1958

### **09 - Mixed Oak Ravine Woodland**

McMillan et al., 1997

Pitts et al., 1987

Stains and Baker, 1958

### **Comments**

ag land: mink observed moving towards riparian zone (one seen moving across a soybean field); probably at least SUBOPTIMAL habitat tolerated for longer movements

mink prefer streams with abundant bank vegetation; areas of brush and timber near swamps or other wet areas are preferred although marshes containing sedge (*Carex*) and cattail (*Typha*) provide good habitat

mink is uncommon and inhabits the riparian woodland

mink are uncommon and inhabit wooded areas along streams and lakes

mink prefer streams with abundant bank vegetation; areas of brush and timber near swamps or other wet areas are preferred although marshes containing sedge (*Carex*) and cattail (*Typha*) provide good habitat

mink prefer streams with abundant bank vegetation; areas of brush and timber near swamps or other wet areas are preferred although marshes containing sedge (*Carex*) and cattail (*Typha*) provide good habitat

mink is uncommon and inhabits the riparian woodland

mink prefer streams with abundant bank vegetation; areas of brush and timber near swamps or other wet areas are preferred although marshes containing sedge (*Carex*) and cattail (*Typha*) provide good habitat

observed in wooded riparian zone associated with Kings Creek and its tributaries; this creek an intermittent stream, so mink may not be year-round residents; use of riparian zone consistent with known use of stream banks and forest edges near water

mink are uncommon and inhabit wooded areas along streams and lakes

mink prefer streams with abundant bank vegetation; areas of brush and timber near swamps or other wet areas are preferred although marshes containing sedge (*Carex*) and cattail (*Typha*) provide good habitat

### **11 - Cottonwood Floodplain Woodland**

Andersen and Fleharty, 1967  
Choate, 1967

Stains and Packard, 1955

Stains and Baker, 1958

mink is uncommon and inhabits the riparian woodland

mink live along larger streams; unsuitable if insufficient cover or streams are intermittent

mink prefer streams with abundant bank vegetation; areas of brush and timber near swamps or other wet areas are preferred although marshes containing sedge (Carex) and cattail (Typha) provide good habitat

### **15 - Buttonbush (Swamp) Shrubland**

Stains and Baker, 1958

mink prefer streams with abundant bank vegetation; areas of brush and timber near swamps or other wet areas are preferred although marshes containing sedge (Carex) and cattail (Typha) provide good habitat

### **31 - Freshwater Marsh**

Ports and Ports, 1989  
Stains and Baker, 1958

mink prefer streams with abundant bank vegetation; areas of brush and timber near swamps or other wet areas are preferred although marshes containing sedge (Carex) and cattail (Typha) provide good habitat

Proulx et al., 1987

Lariviere, 1999

### **32 - Bulrush Marsh**

Walker, 1978

### **33 - Cattail Marsh**

Walker, 1978

Lacki et al., 1991

Ports and Ports, 1989

Stains and Baker, 1958

alliance chosen from Mammalian Species account

mink prefer streams with abundant bank vegetation; areas of brush and timber near swamps or other wet areas are preferred although marshes containing sedge (Carex) and cattail (Typha) provide good habitat

Proulx et al., 1987

Lariviere, 1999

### **70 - Weedy Marsh**

Lariviere, 1999

### **82 - Water (Lake)**

Pitts et al., 1987

alliance chosen from Mammalian Species account

alliance chosen from Mammalian Species account

mink are uncommon and inhabit wooded areas along streams and lakes

mink tracks seen along lakes

alliance chosen from Mammalian Species account

Halloran and Glass, 1959

Lariviere, 1999

[#KS GAP]

Map 60 m edge.

## **82 - Water (River)**

Choate and Fleharty, 1975

mink are common around permanent sources of water such as major rivers and Big Creek

Stains and Packard, 1955

mink live along larger streams; unsuitable if insufficient cover or streams are intermittent

Walker, 1978

Pitts et al., 1987

mink are uncommon and inhabit wooded areas along streams and lakes

Stains and Baker, 1958

mink prefer streams with abundant bank vegetation; areas of brush and timber near swamps or other wet areas are preferred although marshes containing sedge (*Carex*) and cattail (*Typha*) provide good habitat

Halloran and Glass, 1959

mink tracks seen along streams

Lariviere, 1999

mink associated with water; near lakes, abundance of mink decreases with increased human development; alliance chosen from Mammalian Species account

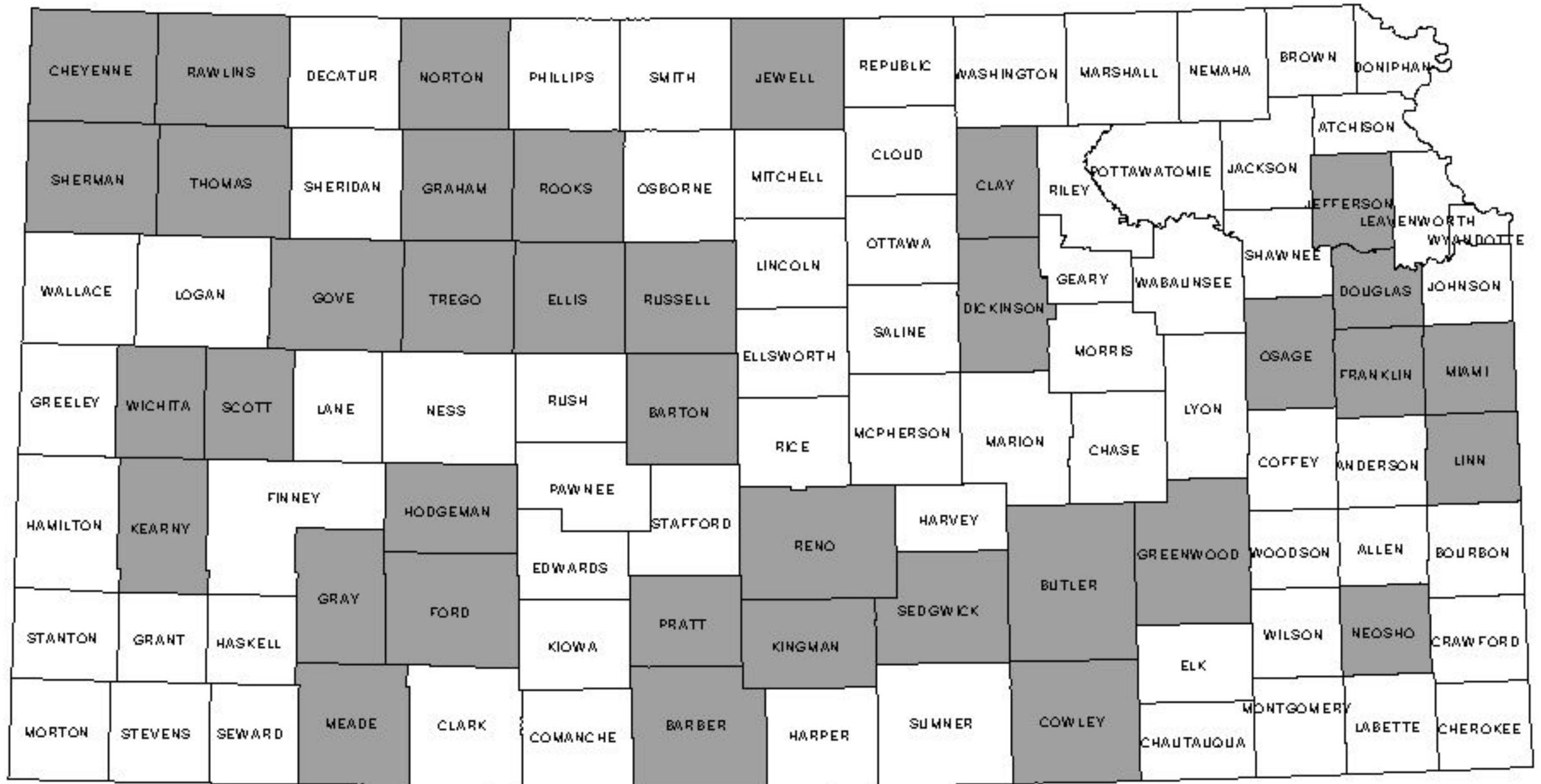
[#KS GAP]

Map 60 m edge.

### Reference List

1. Andersen, K. W. and Fleharty, E. D. Fort Hays Studies Science Series. 1967; 6, 1-45.
2. Choate, J. R. State Biological Survey of Kansas. 1967: 1-46.
3. Choate, J. R. and Fleharty, E. D. Occasional Papers, The Museum, Texas Tech University. 1975; 37, 1-80.
4. Halloran, A. F. and Glass, B. P. Journal of Mammalogy. 1959; 40, 360-370.
5. Lacki, M. J.; Hummer, J. W., and Webster, H. J. Ohio Journal of Science. 1991; 91, 154-158.
6. Lariviere, S. Mammalian Species. 1999; 608, 1-9.
7. McMillan, B. R.; Kaufman, D. W.; Kaufman, G. A., and Matlack, R. S. The Prairie Naturalist. 1997; 29, 263-271.
8. Pitts, R. M.; Levalley, M. J., and Klinger, S. Transactions of the Kansas Academy of Science. 1987; 90, 75-80.
9. Ports, M. A. and Ports, L. K. The Great Basin Naturalist. 1989; 49, 123-130.
10. Proulx, G.; McDonnell, J. A., and Gilbert, F. F. The Canadian Field-Naturalist. 1987; 101, 89-92.
11. Stains, H. J. and Baker, R. H. Miscellaneous Publications, Museum of Natural History, University of Kansas. 1958; 18, 1-100.
12. Stains, H. J. and Packard, R. L. Transactions of the Kansas Academy of Science. 1955; 58, 222-224.
13. Walker, J. R. Transactions of the Kansas Academy of Science. 1978; 81, 185-229.

## Mink



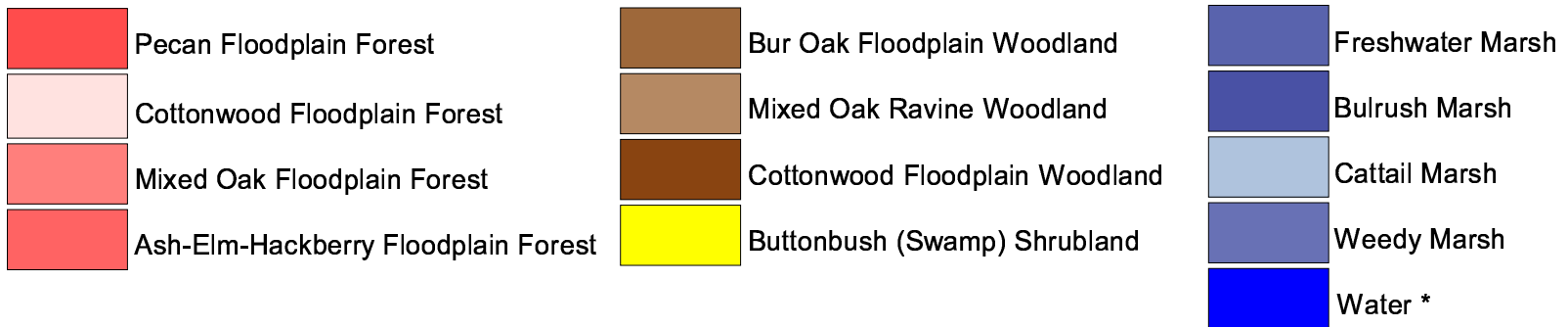
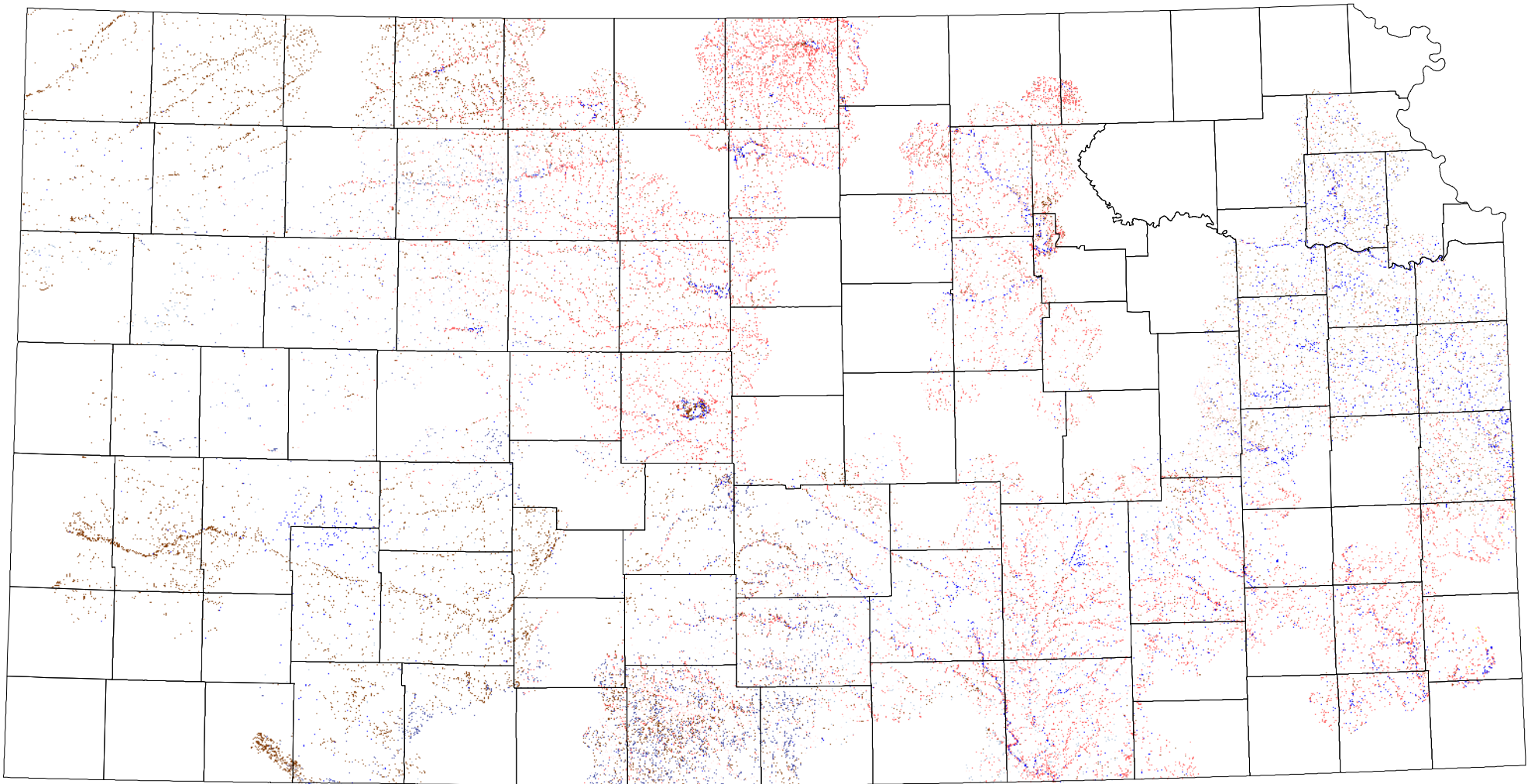
Recorded presence
  No records

Recorded distribution include specimen records and observations collected during 1941-2000 from University of Kansas Museum of Natural History, Sternberg Museum of Natural History, a large to mid-sized mammal survey conducted by regional biologists and conservation officers from the Kansas Department of Wildlife and Parks, and personal observations from professional mammalogists.

[Habitats](#)

[Habitat Map](#)

# Mink



\* 60 m edge