

Habitat Model for Species: **Long-tailed Weasel**

Mustela frenata

[Distribution Map](#) [Habitat Map](#)

Landcover Category

0 - Comments

Choate and Fleharty, 1975

[#Reviewer]

Habitat Restrictions

Comments

one long-tailed weasel found dead on street near outskirts of Hays, KS

Kaufman : Add Riley Co. (10198)

01 - Maple-Basswood Forest

Rosenblatt et al., 1999

02 - Oak-Hickory Forest

Fitch and Rainey, 1956

Rosenblatt et al., 1999

05 - Ash-Elm-Hackberry Floodplain Forest

Pitts et al., 1987

rare, one weasel observed in woodland near a stream

08 - Bur Oak Floodplain Woodland

Polder, 1968

SUBOPTIMAL habitat

09 - Mixed Oak Ravine Woodland

Pitts et al., 1987

rare, one weasel observed in woodland near a stream

17 - Tallgrass Prairie

Getz et al., 1987

McMillan et al., 1997

2 individuals captured in upland tallgrass prairie; habitat consistent with known use of grasslands, but likely more abundant in mesic sites near streams and lakes than in open grassland

Polder, 1968

22 - Mixed Prairie

Choate and Fleharty, 1975

Pefaur and Hoffmann, 1975

Fleharty et al., 1972

Lock, 1966

Tolliver and Wilhelm, 1985

a long-tailed weasel observed crossing a road with a kangaroo rat (*Dipodomys ordii*) in its mouth

31 - Freshwater Marsh

Ports and Ports, 1989

40 - Non-native Grassland

Cole and Batzli, 1978
Getz et al., 1987
Polder, 1968

44 - Cultivated Land

Polder, 1968

legume (alfalfa?) hay fields and legume pasture used extensively

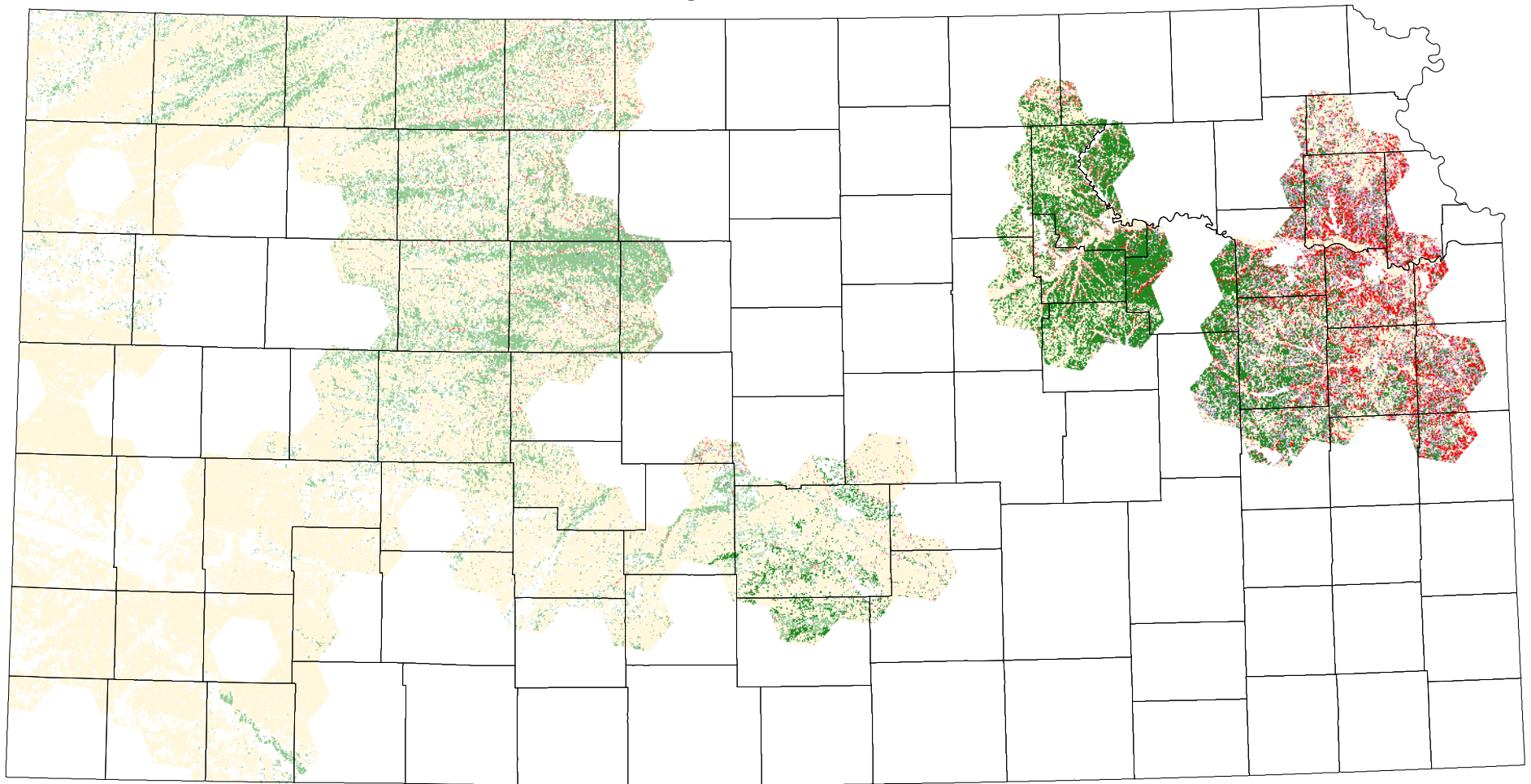
55 - Deciduous Woodland

Fitch and Rainey, 1956

Reference List

1. Choate, J. R. and E. D. Fleharty. 1975. Synopsis of native, recent mammals of Ellis County, Kansas. Occasional Papers, The Museum, Texas Tech University 37:1-80.
2. Cole, F. R. and G. O. Batzli. 1978. Influence of supplemental feeding on a vole population. Journal of Mammalogy 59:809-819.
3. Fitch, H. S. and D. G. Rainey. 1956. Ecological observations on the woodrat (*Neotoma floridana*). University of Kansas Publications, Museum of Natural History 8:499-533.
4. Fleharty, E. D., J. R. Choate, and M. M. Mares. 1972. Fluctuations in population density of the hispid cotton rat: factors influencing a "crash". Bulletin of the Southern California Academy of Sciences 71:132-138.
5. Getz, L. L., B. J. Hofmann, B. J. Klatt, L. Verner, F. R. Cole, and R. L. Lindroth. 1987. Fourteen years of population fluctuations of *Microtus ochrogaster* and *M. pennsylvanicus* in east central Illinois. Canadian Journal of Zoology 65:1317-1325.
6. Lock, R. A. 1966. Home range and some other population aspects of small mammals in a relict grassland. M.S. Thesis. Fort Hays State College. Hays, Kansas.
7. McMillan, B. R., D. W. Kaufman, G. A. Kaufman, and R. S. Matlack. 1997. Mammals of the Konza Prairie: new observations and an updated species list. The Prairie Naturalist 29:263-271.
8. Pefaur, J. E. and R. S. Hoffmann. 1975. Studies of small mammal populations at three sites on the northern Great Plains. Occasional Papers of the Museum of Natural History, The University of Kansas 37:1-27.
9. Pitts, R. M., M. J. Levalley, and S. Klinger. 1987. Mammals of Fort Riley, Kansas. Transactions of the Kansas Academy of Science 90:75-80.
10. Polder, E. 1968. Spotted skunk and weasel populations den and cover usage by northeast Iowa. Iowa Academy of Science 75:142-146.
11. Ports, M. A. and L. K. Ports. 1989. Associations of small mammals occurring in a pluvial lake basin, Ruby Lake, Nevada. The Great Basin Naturalist 49:123-130.
12. Rosenblatt, D. L., E. J. Heske, S. L. Nelson, D. M. Barber, M. A. Miller, and B. MacAllister. 1999. Forest fragments in east-central Illinois: islands or habitat patches for mammals? The American Midland Naturalist 14:115-123.
13. Tolliver, D. K. and R. B. Wilhelm. 1985. County records for two mustelids in Kansas. Transactions of the Kansas Academy of Science 88:37.

Long-tailed Weasel



Maple-Basswood Forest



Oak-Hickory Forest



Ash-Elm-Hackberry Floodplain Forest



Bur Oak Floodplain Woodland



Mixed Oak Ravine Woodland



Tallgrass Prairie



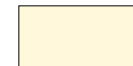
Mixed Prairie



Freshwater Marsh



Non-native Grassland



Cultivated Land



Deciduous Woodland