

Habitat Model for Species: **Least Weasel**
Mustela nivalis

[Distribution Map](#) [Habitat Map](#)

Landcover Category

0 - Comments

Jones and Cortner, 1965

Clark and Clark, 1988

Habitat Restrictions

Comments

least weasel was captured in the Blue River valley in a trap set in a garage at a rural elevator

a least weasel was found dead on a state highway; surrounding habitat was lowland pastures, upland woods, and floodplains; much of area was moderately to heavily wooded

04 - Pecan Floodplain Forest

Sheffield and King, 1994

habitat distribution of species determined by local distribution of small rodents; it is found in riparian habitats and adjacent agricultural lands at the periphery of its range; alliance chosen from habitat description in Mammalian Species account

05 - Ash-Elm-Hackberry Floodplain Forest

Andersen, 1979

Sheffield and King, 1994

habitat distribution of species determined by local distribution of small rodents; it is found in riparian habitats and adjacent agricultural lands at the periphery of its range; alliance chosen from habitat description in Mammalian Species account

06 - Cottonwood Floodplain Forest

Sheffield and King, 1994

07 - Mixed Oak Floodplain Forest

Sheffield and King, 1994

habitat distribution of species determined by local distribution of small rodents; it is found in riparian habitats and adjacent agricultural lands at the periphery of its range; alliance chosen from habitat description in Mammalian Species account

08 - Bur Oak Floodplain Woodland

Sheffield and King, 1994

habitat distribution of species determined by local distribution of small rodents; it is found in riparian habitats and adjacent agricultural lands at the periphery of its range; alliance chosen from habitat description in Mammalian Species account

11 - Cottonwood Floodplain Woodland

Andersen, 1979

17 - Tallgrass Prairie

Bailey and Terman, 1986

Choate et al., 1988

evidence supports idea that this species will occur in mesic rangelands and riparian habitats in Flint Hills

Getz et al., 1987

Finck et al., 1986

total of 4 individuals captured in heavy grass and forb cover or a clump of dogwood on a woody limestone outcrop near a woodrat den

Vacanti and Geluso, 1985

Hoofer and Choate, 1997

records suggest that dispersal of this species has occurred primarily across agricultural land and tallgrass prairie associated with watercourses

Polder, 1968

22 - Mixed Prairie

Hesket and Fleharty, 1965

Tolliver and Wilhelm, 1985

one least weasel captured between Elm Creek and Medicine Creek (assumed grassland)

40 - Non-native Grassland

Andersen, 1979

Choate et al., 1988

Cole and Batzli, 1978

Getz et al., 1987

Hoofer and Choate, 1997

some least weasels captured in grass wastelands
least weasel found in a round hay bale

records suggest that dispersal of this species has occurred primarily across agricultural land and tallgrass prairie associated with watercourses

Polder, 1968

Swan, 1977

weasel trapped on a brome grass (*Bromus*) terrace about 70 feet from a small stream

44 - Cultivated Land

Andersen, 1979

several least weasels captured in cane fields (presumably forage sorghum) and some of these were near wooded streams; other least weasels captured in farmyards

Choate et al., 1979

all known localities of least weasel are near watercourses or reservoirs; suggests that dispersal of species has occurred through riparian habitats and across agricultural land located on floodplains

Choate et al., 1988

two least weasels captured where surrounding habitat was tilled cropland; evidence supports idea that this species will occur in mesic rangelands and cropland habitats in Flint Hills

Hofer and Choate, 1997

records suggest that dispersal of this species has occurred primarily across agricultural land and tallgrass prairie associated with watercourses

Sheffield and King, 1994

habitat distribution of species determined by local distribution of small rodents; it is found in riparian habitats and adjacent agricultural lands at the periphery of its range; alliance chosen from habitat description in Mammalian Species account

Polder, 1968

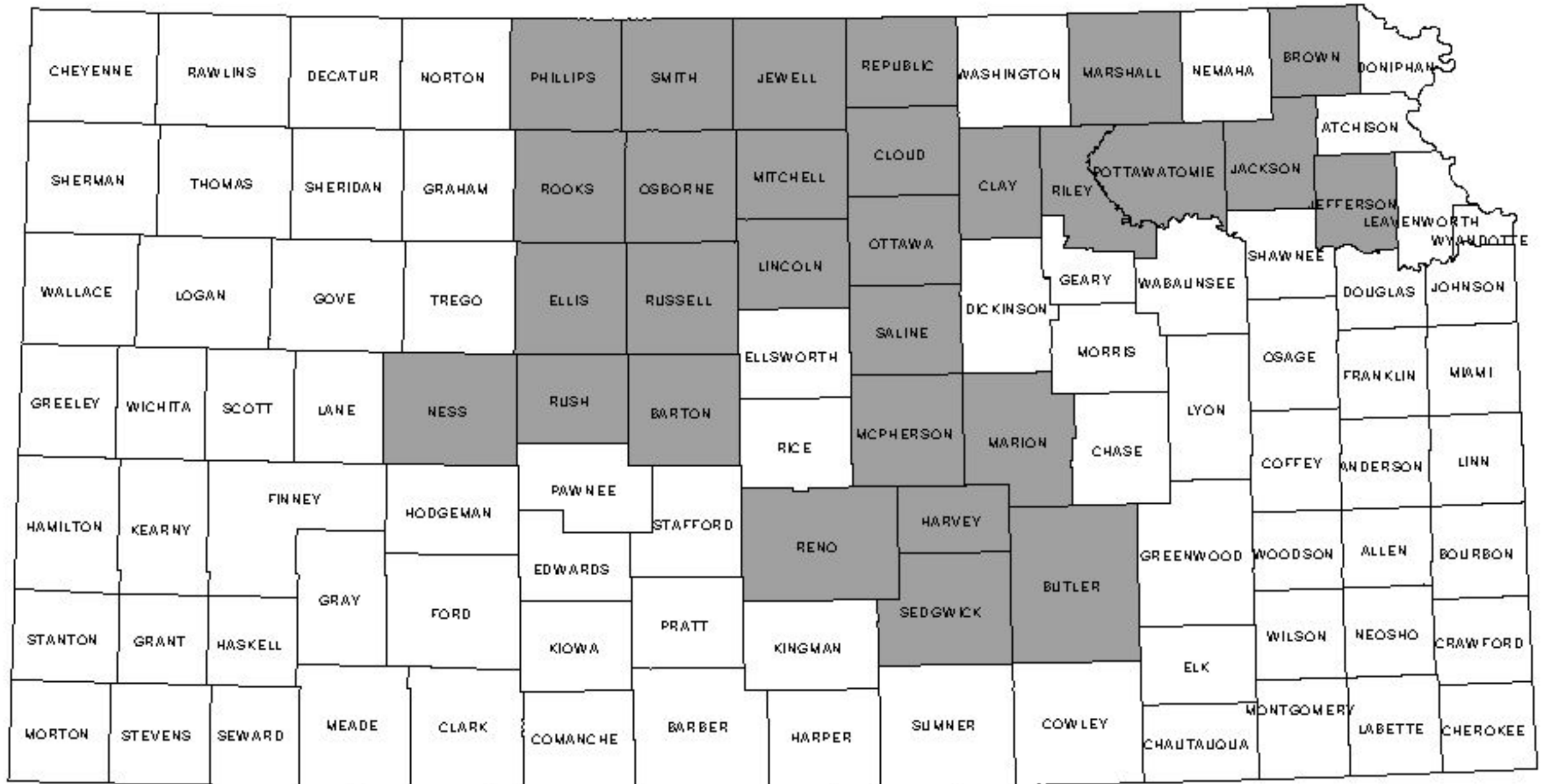
71 - Weedy Upland

Hesket and Fleharty, 1965

Reference List

1. Andersen, K. W. 1979. Recent records of *Mustela nivalis* from Kansas. Transactions of the Kansas Academy of Science 73:404-406.
2. Bailey, V. and M. R. Terman. 1986. Update on the least weasel (*Mustela nivalis*) in Kansas. Transactions of the Kansas Academy of Science 89:62-65.
3. Choate, J. R., M. D. Engstrom, and R. B. Wilhelm. 1979. Historical biogeography of the least weasel in Kansas. Transactions of the Kansas Academy of Science 82:231-234.
4. Choate, J. R., W. Langley, and V. Bailey. 1988. The least weasel in southeastern Kansas. The Prairie Naturalist 20:57.
5. Clark, B. S. and B. K. Clark. 1988. First record of the least weasel in Oklahoma. The Prairie Naturalist 20:134.
6. Cole, F. R. and G. O. Batzli. 1978. Influence of supplemental feeding on a vole population. Journal of Mammalogy 59:809-819.
7. Finck, E. J., D. W. Kaufman, G. A. Kaufman, S. K. Gurtz, B. K. Clark, L. J. McLellan, and B. S. Clark. 1986. Mammals of the Konza Prairie Research Natural Area, Kansas. The Prairie Naturalist 18:153-166.
8. Getz, L. L., B. J. Hofmann, B. J. Klatt, L. Verner, F. R. Cole, and R. L. Lindroth. 1987. Fourteen years of population fluctuations of *Microtus ochrogaster* and *M. pennsylvanicus* in east central Illinois. Canadian Journal of Zoology 65:1317-1325.
9. Hesket, M. G. and E. D. Fleharty. 1965. Additional records of the least weasel (*Mustela nivalis*) in Kansas. Transactions of the Kansas Academy of Science 65:582-583.
10. Hofer, S. R. and J. R. Choate. 1997. Updated distribution of the least weasel on the central Great Plains. The Prairie Naturalist 29:1-6.
11. Jones, J. K., Jr. and G. L. Cortner. 1965. The least weasel, *Mustela nivalis*, in Kansas. The American Midland Naturalist 73:247.
12. Polder, E. 1968. Spotted skunk and weasel populations den and cover usage by northeast Iowa. Iowa Academy of Science 75:142-146.
13. Sheffield, S. R. and C. M. King. 1994. *Mustela nivalis*. Mammalian Species 454:1-10.
14. Swan, T. 1977. Additional records of the least weasel in Kansas. Transactions of the Kansas Academy of Science 80:159-160.
15. Tolliver, D. K. and R. B. Wilhelm. 1985. County records for two mustelids in Kansas. Transactions of the Kansas Academy of Science 88:37.
16. Vacanti, P. L. and K. N. Geluso. 1985. Recolonization of a burned prairie by meadow voles (*Microtus pennsylvanicus*). The Prairie Naturalist 17:15-22.

Least Weasel



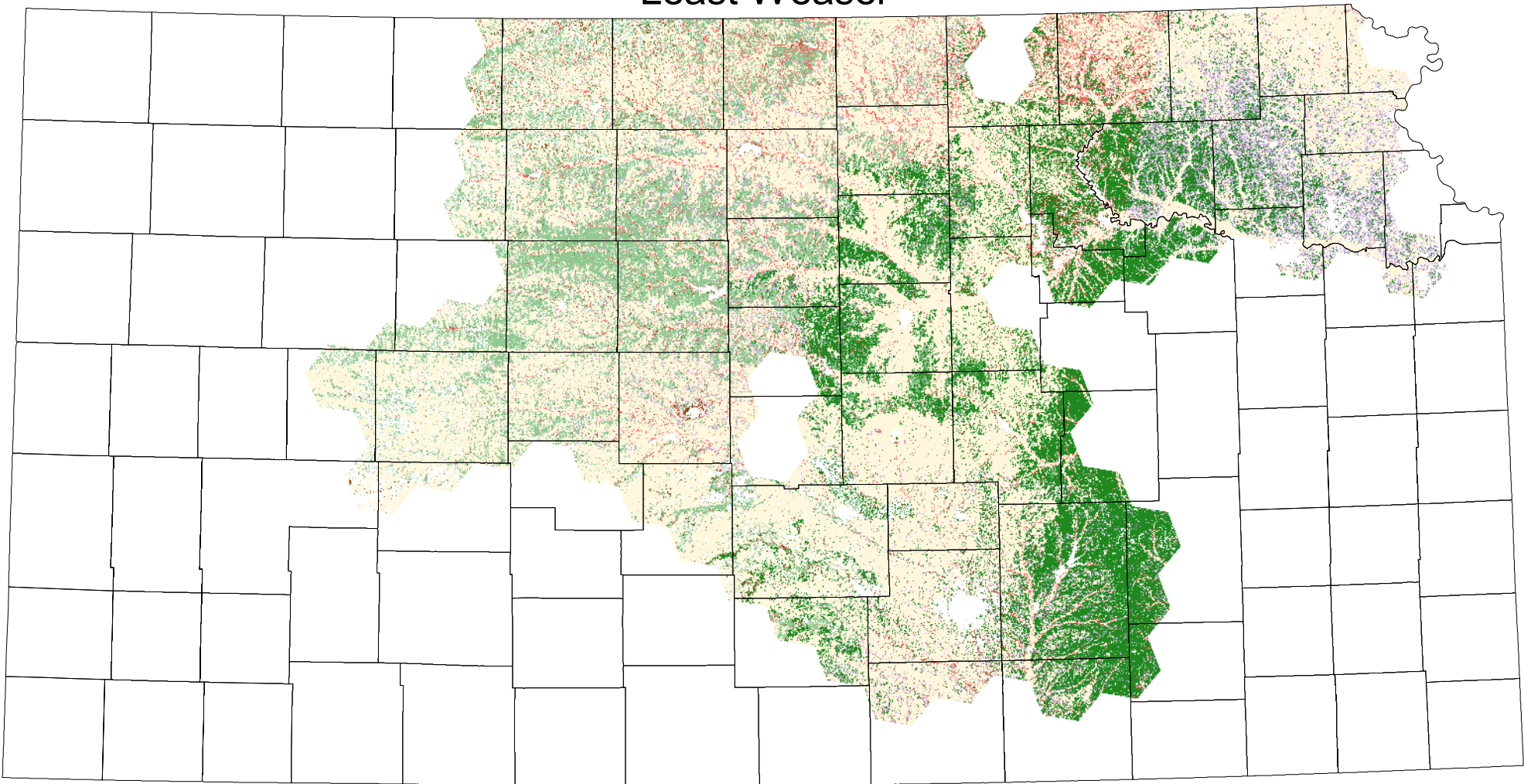
Recorded presence
 No records

Recorded distribution include specimen records and observations collected during 1941-2000 from University of Kansas Museum of Natural History, Sternberg Museum of Natural History, a large to mid-sized mammal survey conducted by regional biologists and conservation officers from the Kansas Department of Wildlife and Parks, and personal observations from professional mammalogists.

[Habitats](#)

[Habitat Map](#)

Least Weasel



Pecan Floodplain Forest



Ash-Elm-Hackberry Floodplain Forest



Cottonwood Floodplain Forest



Mixed Oak Floodplain Forest



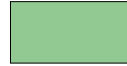
Bur Oak Floodplain Woodland



Cottonwood Floodplain Woodland



Tallgrass Prairie



Mixed Prairie



Non-native Grassland



Cultivated Land



Weedy Upland